

MassDEP C&D Subcommittee

Via Webinar

March 19, 2020 10:00 AM to 12:00 PM



Agenda

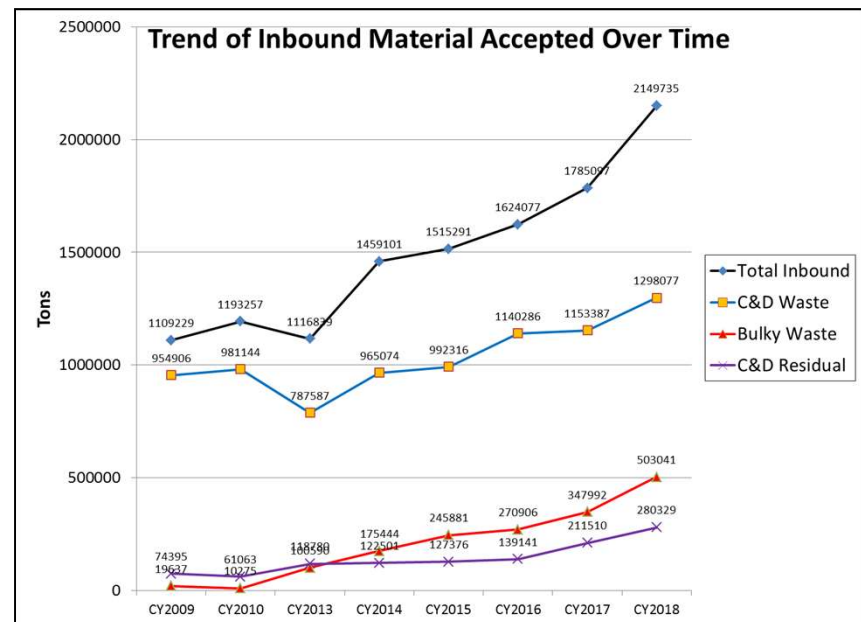
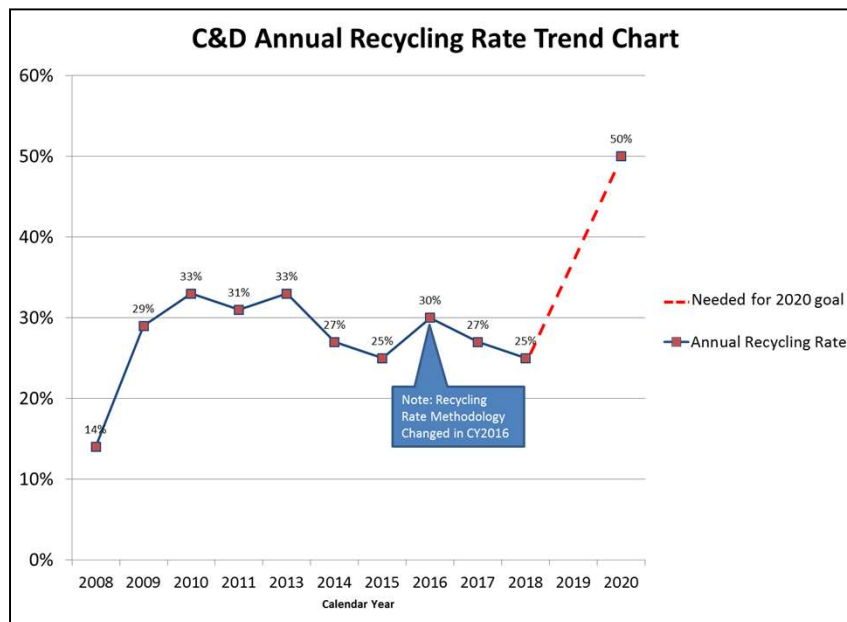
- Welcome/Safety/Introductions
- C&D Minimum Performance Standard Overview
- Draft C&D MPS Q&A Guidance Document
- 2030 SWMP Update/Proposed Waste Bans
- COVID-19 Response Actions
- Announcements/Updates

Welcome/Safety/Introductions

- Prevent spread of Corona Virus
- Governor announced State of emergency 3/10
- What you can do:
 - Wash hands often with soap & warm water (20 sec)
 - Avoid touching face and eyes
 - Clean things frequently touched (e.g. doorknobs)
 - Cover coughs and sneezes with tissue or inside of elbow
 - Stay home if sick
 - Practice social distancing (1m space)
- For information go to mass.gov webpage:
www.mass.gov/coronavirus

C&D Minimum Performance Standard Overview

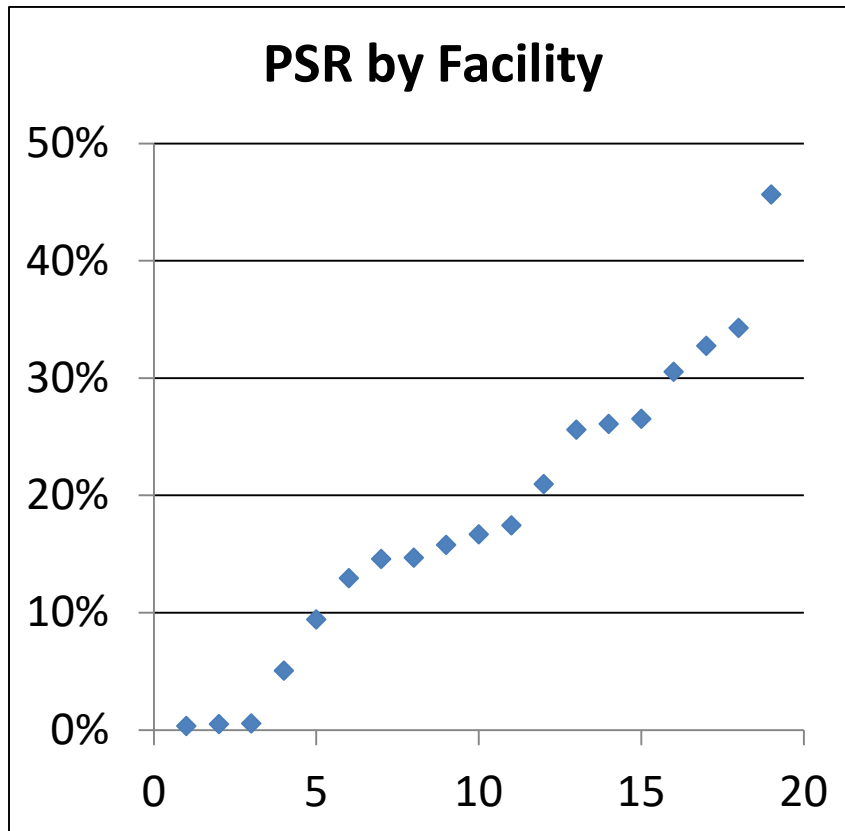
Background



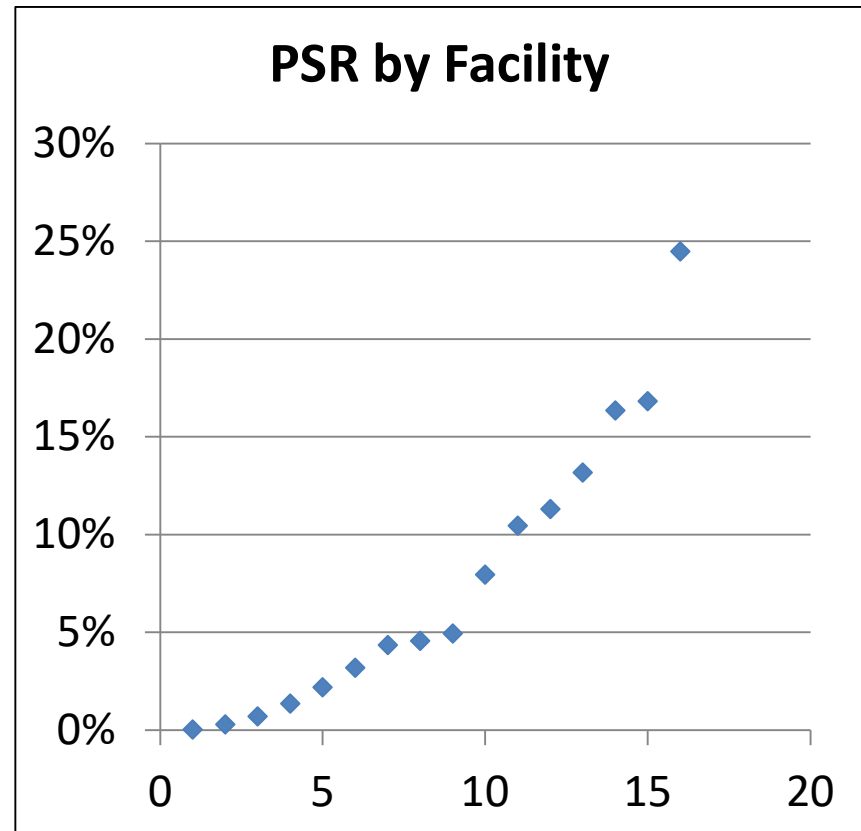
Current Status

CY2018 Process Separation Rate (PSR)

19 C&D Processors

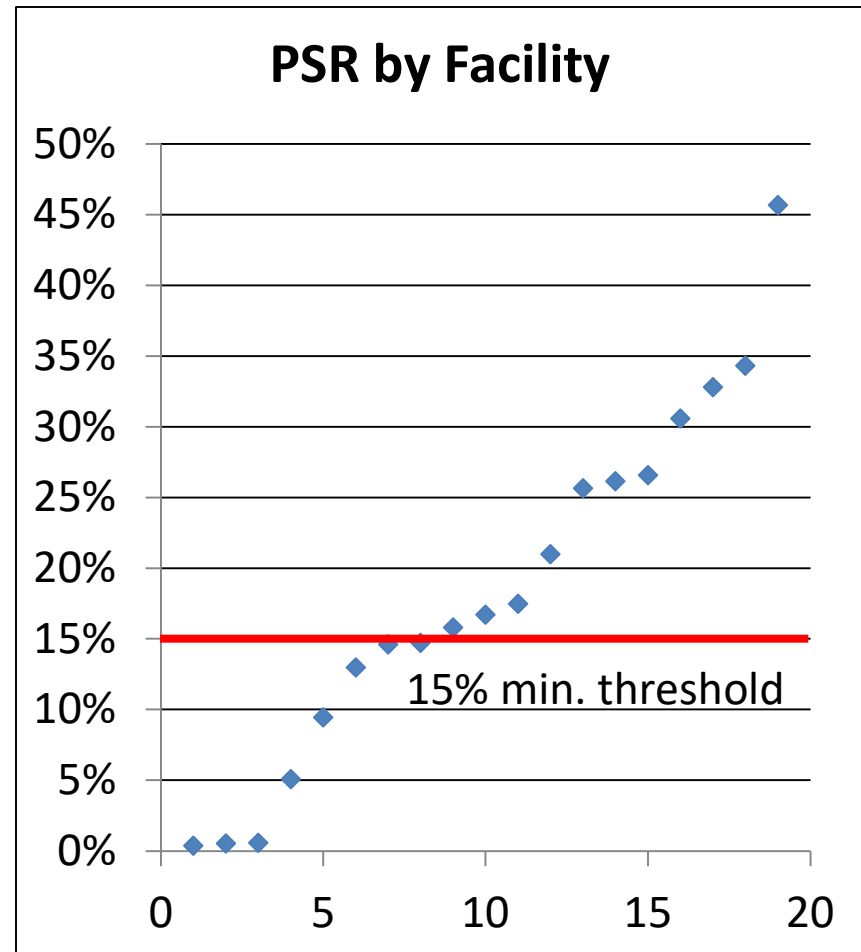


16 Lg. C&D Transfer Stations



Objectives of C&D Minimum Performance Standard

- Level the “playing field” - improve low performing C&D Handling Facilities
- Preferentially direct Mixed C&D Waste to high performing C&D Handling Facilities.
- Reduce “leakage” (i.e. disposal) of inadequately processed C&D waste
- Divert banned materials from disposal to greatest extent possible
- Maximize separation of recyclable materials for further processing or recycling/reuse
- Nothing new! Simply clarifies existing Waste Ban Requirements with measurable performance criteria



C&D MPS Performance Criteria

- C&D MPS performance criteria:
 1. Achieve minimum threshold for the Process Separation Rate (PSR);
 - Initially set PSR minimum threshold at 15%;
 - May increase PSR minimum threshold over time to improve performance
 - Measure PSR as compared to **total inbound material accepted**
 2. Demonstrate that all banned materials are separated to the greatest extent possible.
 - Per Waste Ban Compliance Plan Approval
- Failure to satisfy either performance criterion constitutes a failure to comply with Waste Ban Regs and Waste Ban Compliance Plan
 - Cannot dispose or arrange for disposal of any C&D materials
 - Must transfer C&D materials to MPS-compliant facility

C&D MPS Implementation Plan

- CY2020
 - C&D MPS goes into effect starting in CY2020
 - MassDEP shares C&D MPS facility status based on CY2019 data (ca. 6/30/2020)
 - MassDEP performs QA/QC of annual report data
 - MassDEP conducts periodic site audits to verify data
- CY2021
 - MassDEP publishes MPS facility status based on CY2020 data (ca. 6/30/2020)
 - Under-performing facilities may be subject to enforcement
 - MassDEP continues annual report data QA/QC and periodic site audits

Other Considerations

- All C&D Handling Facilities will be required to submit revised Waste Ban Compliance Plans consistent with C&D MPSP Performance Criteria
 - At time new WB Materials are added to SWM regulation (310 CMR 19.000), or
 - At time of ATO permit renewal, whichever comes first

Draft C&D MPS Q&A Guidance Document

[discuss separate PDF document](#)

2030 SOLID WASTE MASTER PLAN UPDATE

2030 Solid Waste Master Plan

- Comment period on draft plan closed on December 6
- Received 403 comments – either oral, written or both
- 333 of these were repeated form email comments
- Have posted comments received on SWMP webpage
- Currently preparing response to comments document and Final Plan

Draft 2030 Solid Waste Master Plan

- Proposed minimum performance standard for waste ban compliance by construction & demolition (C&D) handling facilities
- Proposed 3 additional waste ban materials
 - Commercial organic material (food material)
 - lowering threshold from 1 ton to ½ ton/week
 - Mattresses
 - Textiles

Next Steps and Schedule

- Developing draft regulations package now
- Potential effective date of fall 2021 – subject to input and discussion
- Key questions
 - What questions or concerns do these potential additional bans raise?
 - Do you feel the needed infrastructure is in place (or will be)?
 - What steps should MassDEP take to support additional waste bans?

COVID-19 Response Actions

re: C&D Handling Facilities

- What impacts have been observed by C&D industry to date?
 - Customers?
 - Markets?
 - Operations?
- What mitigation actions are planned or have been taken?
 - Business continuity plans?
 - Public health protocols?
 - Worker health and safety?
- MassDEP's role?

Any other business to discuss?

For More Information:

Point of Contact:

Mike Elliott

Asbestos/C&D Program Coordinator

MassDEP – Bureau of Air & Waste

One Winter Street

Boston, MA 02108

michael.elliott@mass.gov

617-292-5575