

Norwottuck Rail Trail Pedestrian Bridge over Snell Street Amherst, MA



DCR Public Information Meeting

June 26, 2012, 6:30 p.m.– 8:00 p.m.

Town Room, 2nd Floor, Town Hall, 4 Boltwood Avenue, Amherst



Commonwealth of Massachusetts

Governor

Deval L. Patrick

Lieutenant Governor

Timothy Murray

Energy and Environmental Affairs Secretary

Richard K. Sullivan, Jr.

Department of Conservation and Recreation Commissioner

Edward M. Lambert, Jr.



DCR Mission Statement

*To protect, promote and enhance
our common wealth of natural,
cultural and recreational resources
for the well-being of all.*



MASSACHUSETTS DEPARTMENT OF
CONSERVATION AND RECREATION

Ongoing Commonwealth Investment in the Area

- Norwottuck Rail Trail Rehabilitation Project
- DCR and MassDOT are working together to rehabilitate an 8.5 mile sections of the 10.6 mile Norwottuck Rail Trail, which extends from Northampton to Belchertown, MA.
- Planned approx. \$4 million construction phase
- Design scheduled for completion in 2012
(25% Design submitted)

SIMPSON GUMPERTZ & HEGER

Engineering of Structures
and Building Enclosures

Purpose of Meeting

- Review Snell Street Bridge Project goals/public benefits
- Present bridge project scope/elements
- Provide information on construction impacts and mitigation plans
- Describe bridge project schedule
- Answer questions and provide contact information

Bridge Project Goals / Benefits

- Replace damaged and aged bridge
- Increase vertical clearance to reduce number of truck impacts



Project Funding

- Commonwealth of Massachusetts Accelerated Bridge Program (ABP)
- Construction Project Cost - \$315,000

Project Designer and Contractor

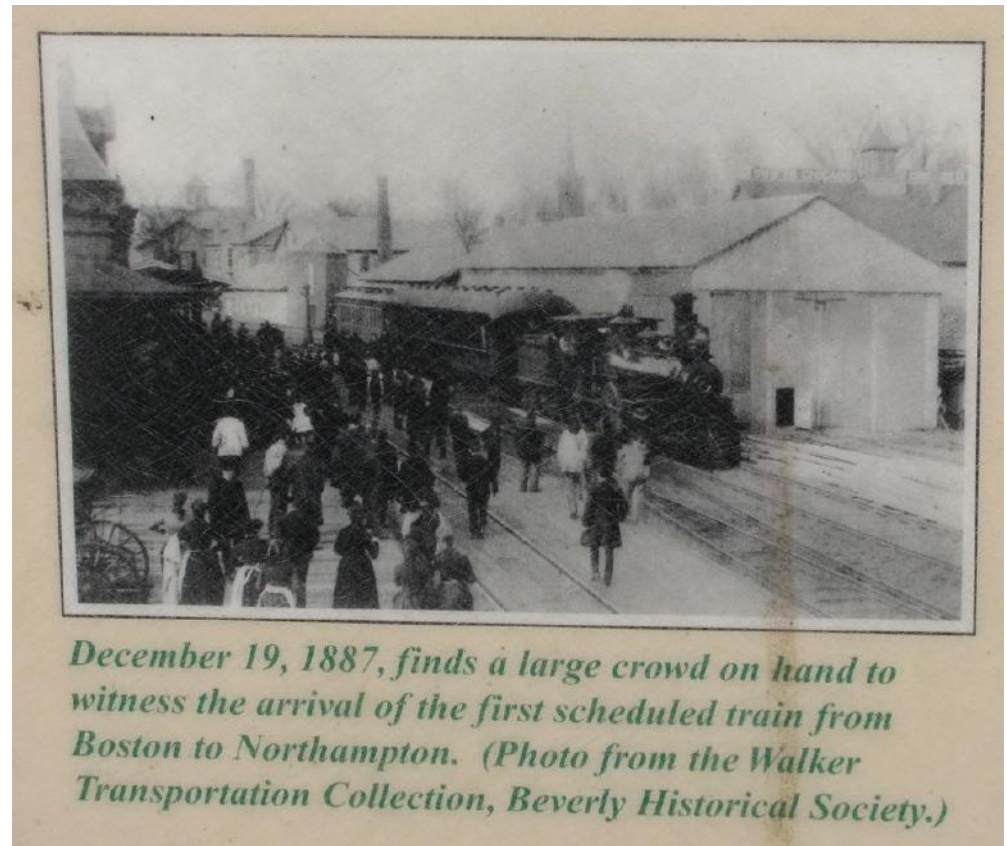
- Structural – Simpson Gumpertz and Heger
- Contractor – MAS Building and Bridge

Aerial – Locus Plan



Description and History of Bridge

- Single-span steel through-girder and floor beam railroad bridge on masonry abutments
- Carried B&M RR from Boston to the Connecticut Valley
- Built c. 1887
- Converted 1993 to recreational trail



Existing Conditions

- General corrosion of steel superstructure
- Deck is worn and weathered



Existing Conditions

- Vehicles regularly impact bridge



Existing Conditions

- Large hole in web of east girder



Considerations for Design

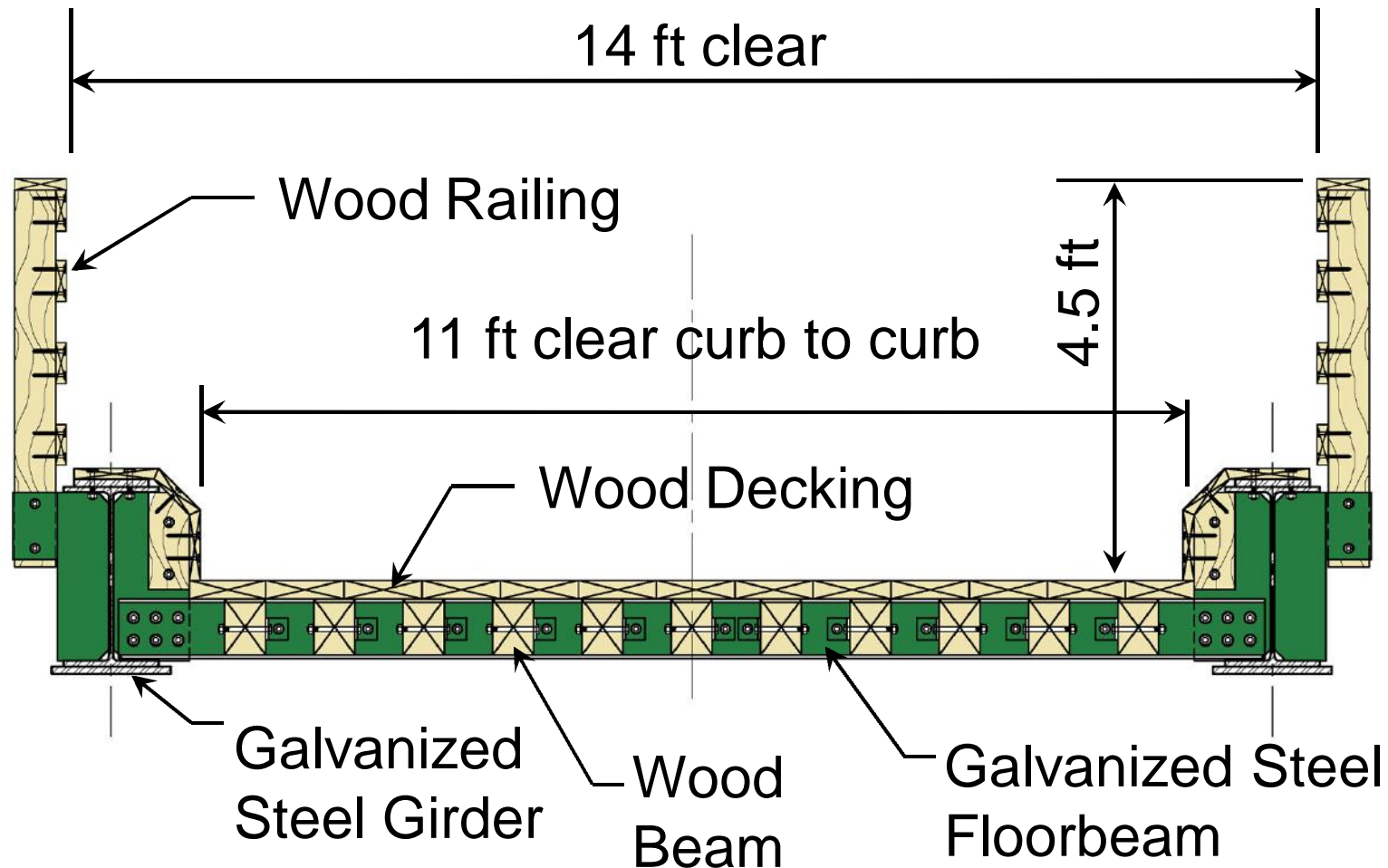
- Adjacent to residential neighborhood
- Larger Norwottuck Rail Trail Rehabilitation
- Reduce risk of truck impacts

Project Scope / Elements

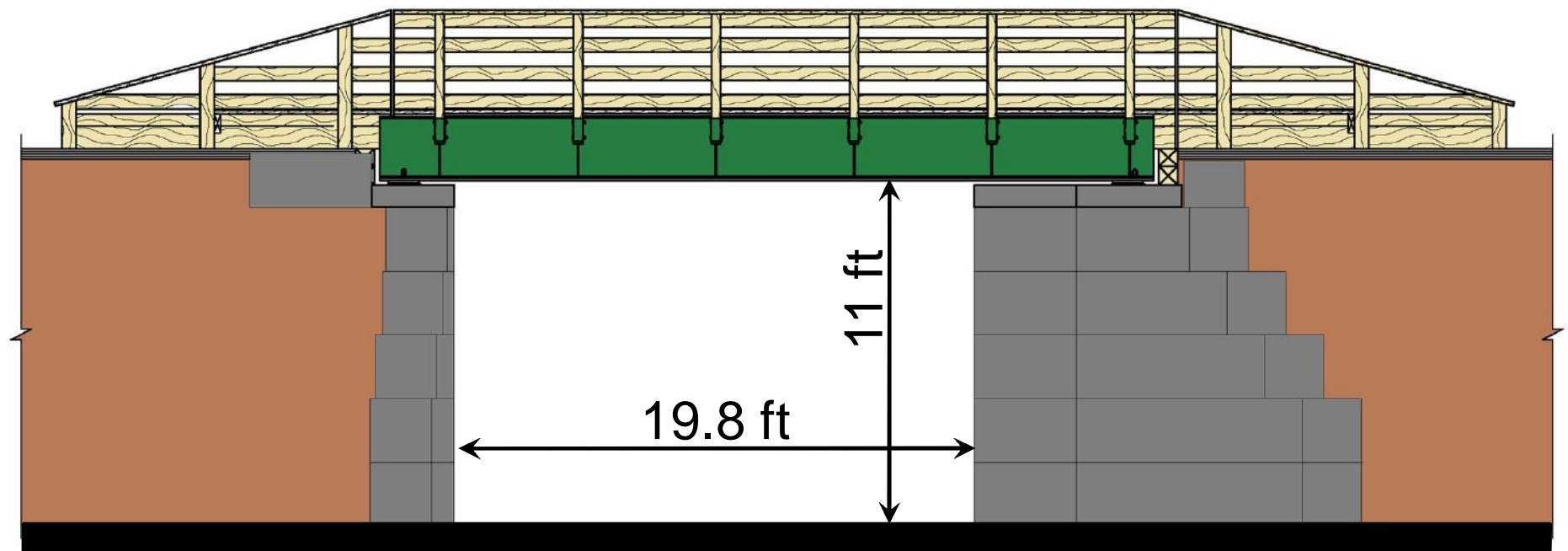
- Replace existing steel through-girder and floorbeam superstructure with shallower steel through-girder and floorbeam superstructure.



Bridge Design – Cross Section



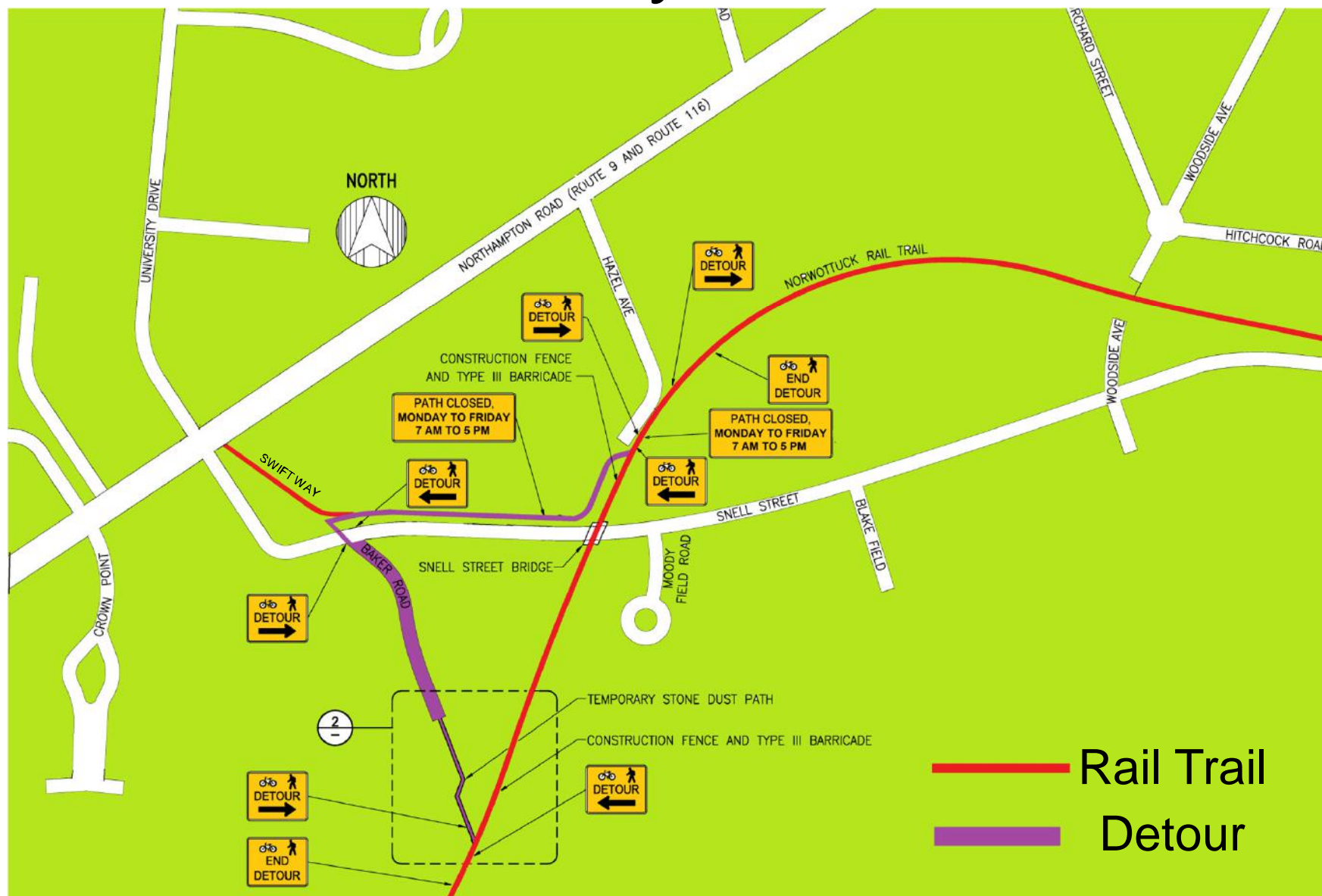
Bridge Design - Elevation



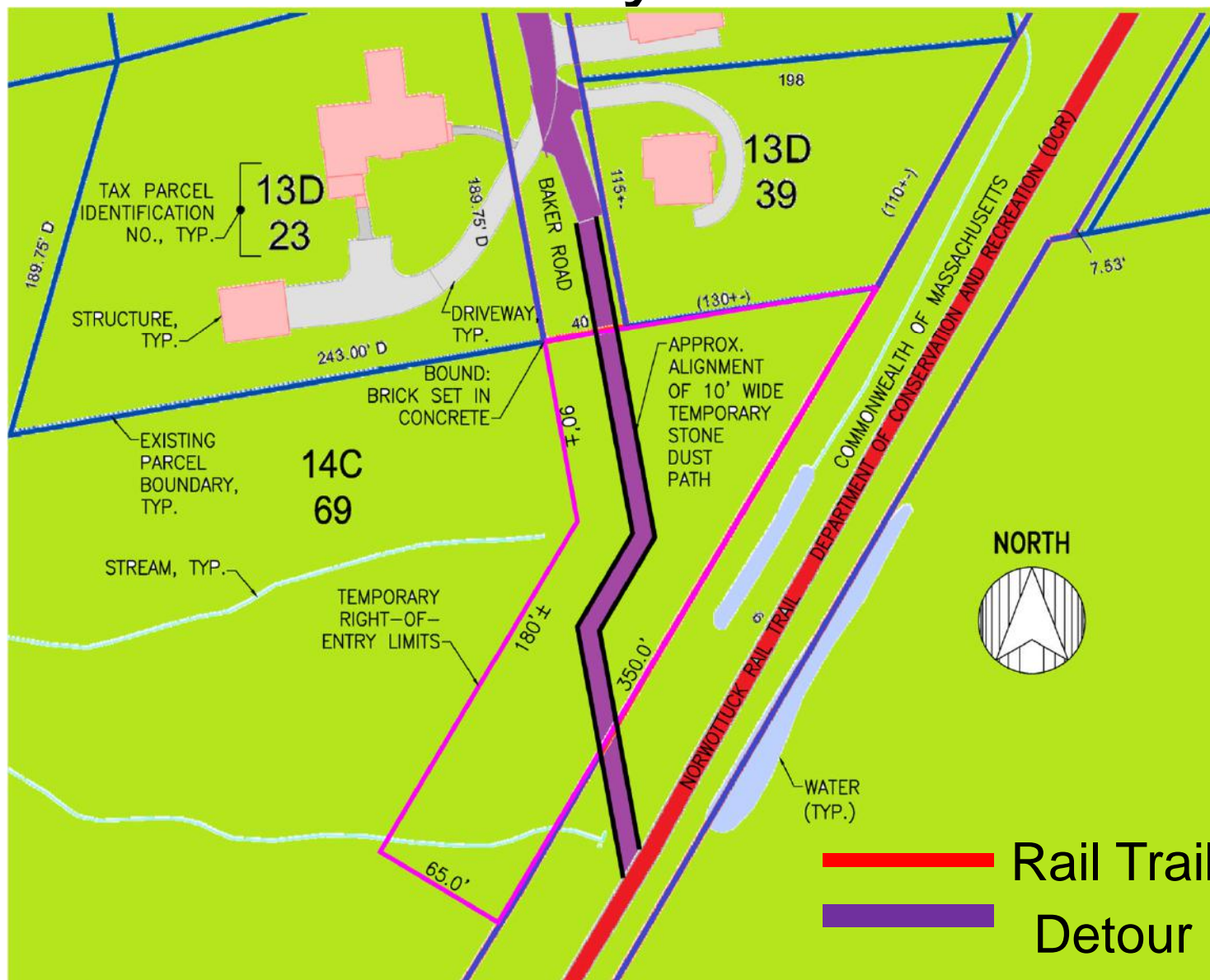
Special Considerations / Mitigation During Construction

- Pedestrian / Bicycle Path Detour
 - Entire Duration of Construction
- Snell Street Closures / Traffic Detours
 - Access to Moody Field Road and Local Residences
- Noise Considerations

Pedestrian / Bicycle Path Detour



Pedestrian / Bicycle Path Detour



Special Considerations / Mitigation During Construction

Snell Street Closures / Detours

- Closures of Snell Street to through-traffic during daytime off-peak hours will be required for construction activities.
- Extended Snell Street closures to through traffic may be required for up to one week each when dismantling or erecting bridge steel.

Special Considerations / Mitigation During Construction

Snell Street Closures / Detours

- Traffic Management Plan has been developed by Contractor for Snell Street traffic detours and for path bike and pedestrian detours.
- Access to Moody Field Road and other residences on Snell Street to be maintained (from at least one end) at all times.

Special Considerations / Mitigation During Construction

Noise Considerations

- No night or weekend work proposed
- No pile driving or other exceptionally loud activities

Anticipated Project Construction Schedule

- Notice to Proceed – May 2012
- Mobilization – June 2012
- Demolition – Late August 2012
- Construction – August and September 2012
- Work completed – October 2012
- Work window – 7 am to 5 pm, Monday through Friday

Questions & Answers

Additional Information

For more information:

– Web:

<http://www.mass.gov/dcr/news/publicmeetings/bridgematerials.htm>

If you have questions, concerns, or suggestions:

– e-mail: dcr.updates@state.ma.us

– phone: 617-626-4974