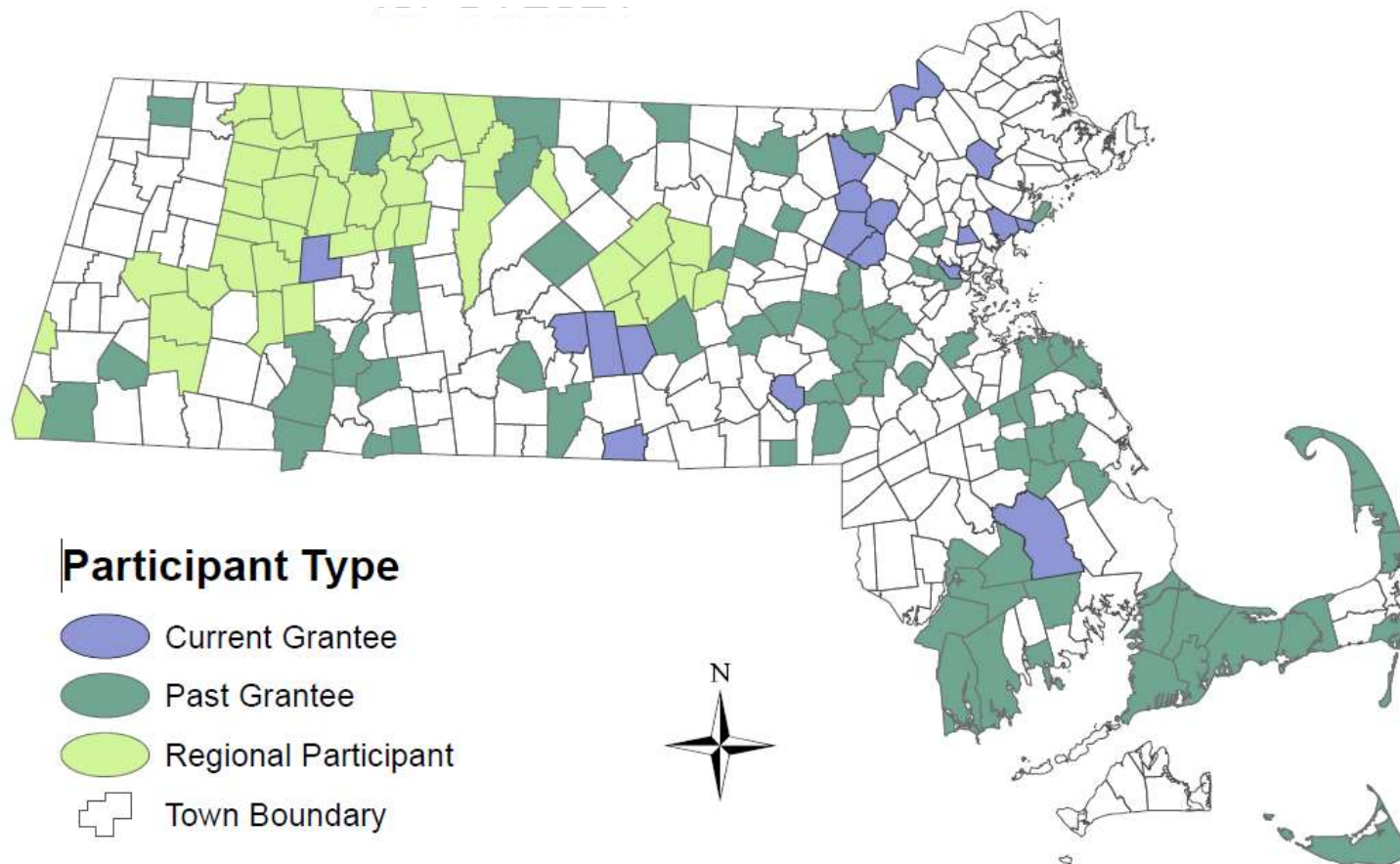


Mattress Recycling in MA



Rachel Smith, Regional Planner, MassDEP; Rachel.Smith@mass.gov

Mattress Disposal Waste Ban: Effective November 1, 2022

- Current municipal contracts for curbside pickup “should” already include language addressing waste ban materials so haulers will not collect these items curbside.
- Best Practices for Curbside Collection Contracts:
<https://www.mass.gov/lists/solid-waste-management-contracts-contracting>

Mattresses No Longer Collected as MSW - What Can Munis Do with Them?

- Contract separately with a mattress recycling vendor
- Build it into contract with existing hauler (i.e., special collection/pick-up)
- Use own municipal resources to collect and self-haul to destination facility
 - Haul directly to the mattress recycling vendor
 - Pick up curbside and hauls back to transfer station where it is aggregated into container and picked up by mattress recycling vendor
- Create a regional contract among munis - separate contracts, negotiated under an umbrella to save money
- Set up a one-day special collection event



CITY OF MELROSE MATTRESS RECYCLING

Lisa Scott

*Environmental Outreach
Coordinator*

OUR MASS DEP GRANT

- ▶ Transportation of mattresses from the City Yard to the vendor
- ▶ Mattress processing fee at the facility

**OUR VENDOR:
GREEN MATTRESS RECYCLING LLC**

greenmattressco.com, Milford, MA



OUR PROCESS:

Curbside Pickup

- ▶ Vendor requires a 50 item minimum
- ▶ Melrose DPW staff handle the scheduling, payment, and reservations
- ▶ \$25 per item
- ▶ Once a month, Fall 2021
- ▶ No pickups Thanksgiving until Valentine's Day

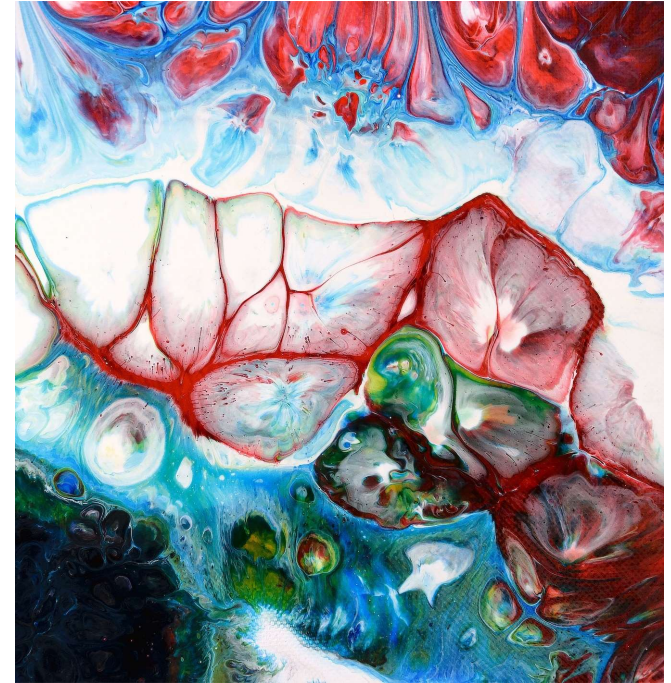
City Yard Drop Off

- ▶ Saturdays, Fall 2021
- ▶ \$10 per item
- ▶ Select Thursday drop-off during the winter



COMMUNICATIONS:

- ▶ Press release to weekly papers, City news item
- ▶ City/Public Works website
- ▶ Social Media, LTMM
- ▶ Sticker:



SUCCESS! We've diverted over 200 mattresses!

HURDLES & LESSONS LEARNED:

Curbside pickup:

- Communication!
- Check the map
- “This is a new program, we are working on the process”

City Yard drop-off:

- Loading the container is like a game of tetris
- Get a bigger container





Mattress Recycling in the Town of Chelmsford

Melissa Joyce, Sustainability Manager
mjoyce@chelmsfordma.gov

MRI, UTEC & Chelmsford

- ▶ Grant awarded in 2021 for CURBSIDE collection of mattresses
 - ▶ Hauling vs Processing
 - ▶ Existing Structure
 - ▶ Logistics
- ▶ Communication to Residents
 - ▶ Website/Facebook
 - ▶ Mailer
 - ▶ Stickers
- ▶ Curbside Collection began November 1, 2021
 - ▶ Every Other Week Collection
 - ▶ 51 Units in November

Hurdles & Lessons Learned

- ▶ Cost to Resident
 - ▶ “Ouch!”
- ▶ Creating a Contract and Statement of Work
 - ▶ Do you have a Procurement Office??
- ▶ Communication
 - ▶ More is better, even if it is hard! Waste Ban made it EASIER!
- ▶ Frequency of Pick Ups
 - ▶ This may have to be adjusted over time...
- ▶ Emphasis on EPR Legislation in the Future
 - ▶ SO IMPORTANT
- ▶ Collective RFP
 - ▶ Market Capacity Challenges