



DCR Emergency Management Planning

Dennis Fitzpatrick,
DCR Emergency Management
Resource Coordinator

Introduction and Background

- MVM – Kennedy Federal Building
- State House Ranger
- 2012 MMA MS Emergency Management
- Dispatch Liasson MEMA
- Emergency Preparedness and Response Coordinator
- DPH OPEM
- DCR Emergency Management Resource Coordinator



Evolution of DCR's Emergency Communication



2012 Transfer of Communications to MEMA Dispatch

Need for interagency coordination and someone to keep the flow of communication current and accurate.



DCR's Role in Emergency Management

Coordination within the agency (Preparation, Storm Response, Events).

Emergency Support Function 3 - Public Works and Engineering, provides a framework for coordination and cooperation across state agencies regarding public works and engineering needs, issues, and activities before, during, and after a disaster or emergency in the Commonwealth.

Northeastern Forest Fire Protection Compact

DCR Statewide Storm Center

SOUTHWEST CORRIDOR HQ, JAMAICA PLAIN

- Evolution – location change, centralized command vs region storm desks.
- Interagency coordination and communication during storms – ESF3, MassDOT, MSP, MEMA
- When is it activated and how it is staffed?
- Reporting and tracking snow removal, damages.
- Resource allocation (Salt, Staff, Equipment)
 - Challenges during the 2015 Blizzards – lessons learned

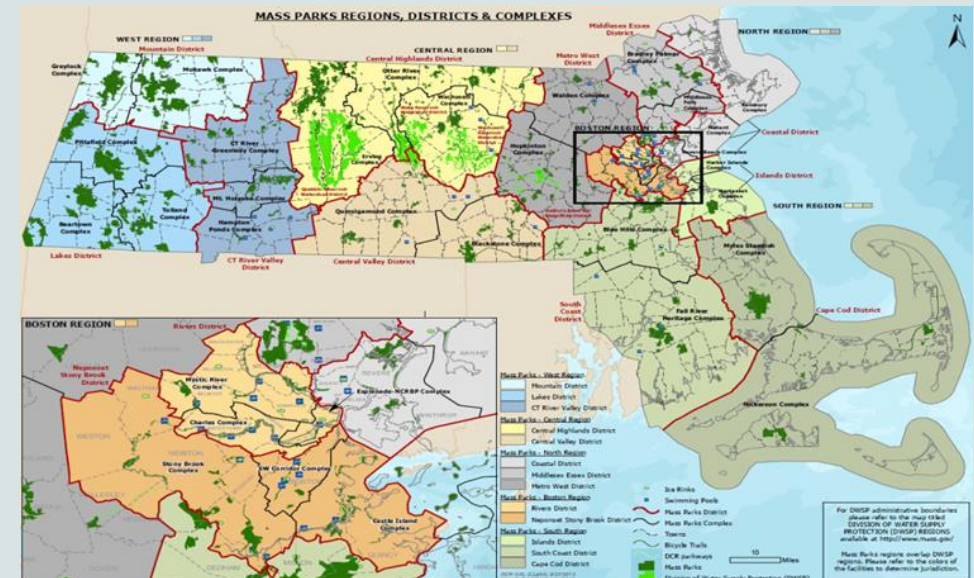
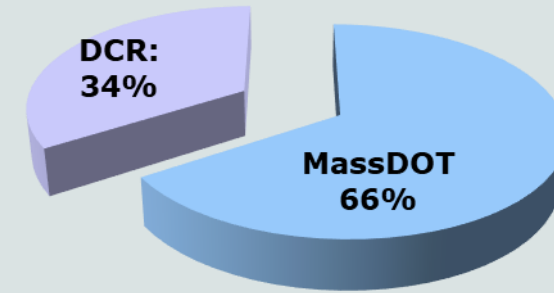
DCR staff receiving a Governor's Citation for coordinating to help plow roads in Washington DC, under the Emergency Management Assistance Compact 2015

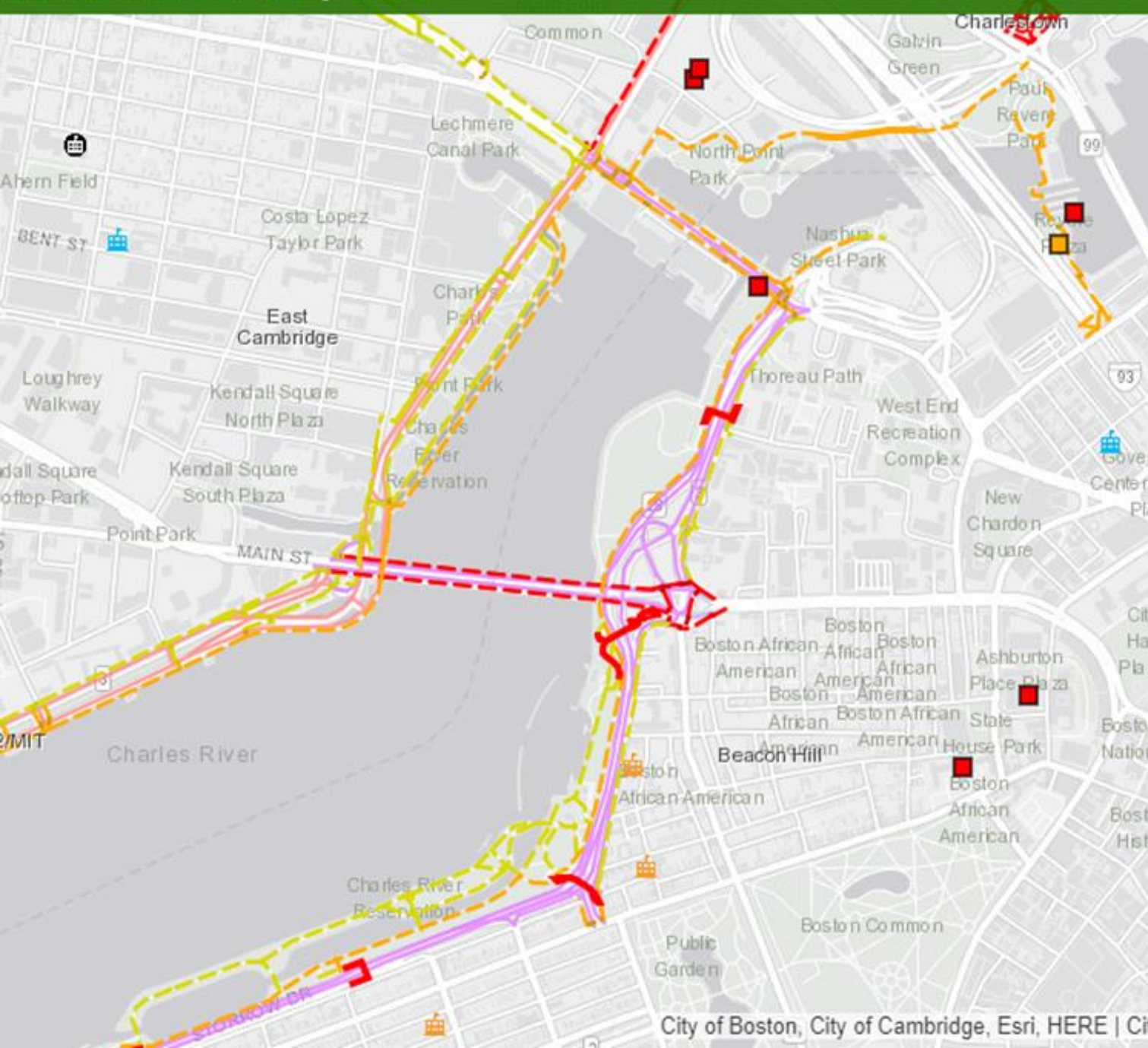


DCR/MassDOT Partnership

- **DCR has care and control of 606 lane miles (292 center line miles) of parkway and roadway segments within Metro Boston.**
- **DCR performs snow and ice removal along 207 lane miles of parkway and 147 miles of pedestrian routes, including 1,674 crosswalks.**
- **MassDOT performs snow and ice removal on 399 lane miles of DCR roadways.**
- **DCR performs snow and ice removal on 8 MassDOT vehicular bridges and 12 miles of MassDOT pedestrian routes.**

DCR Parkway Snow & Ice Removal



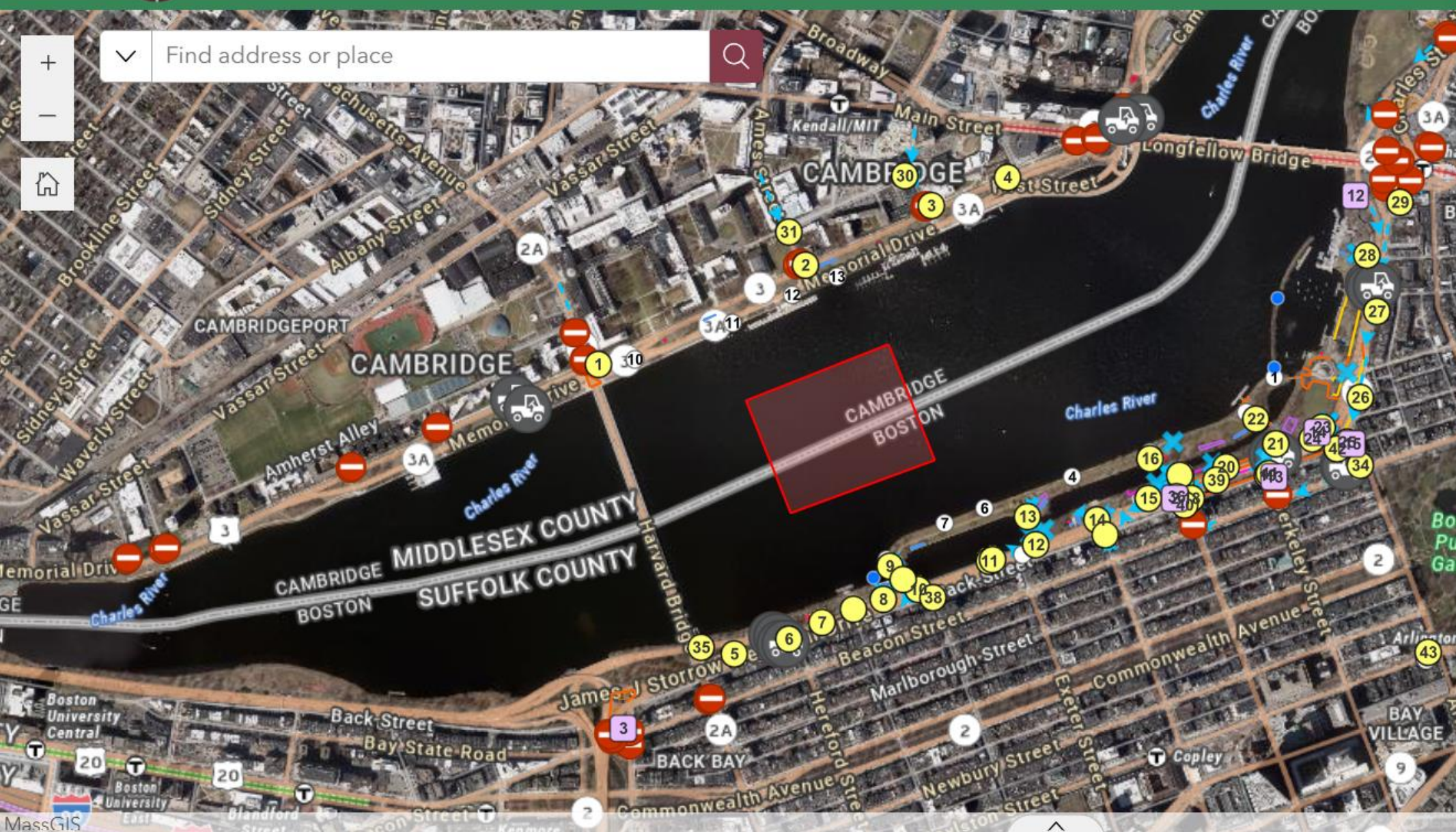


Snow Removal Route Map

Other Responsibilities and Current Projects

- Managed the statewide beach water quality program for 10 years, now with Pool and Waterfront Safety.
- CPR instructor
- COOP
- Work with EEA on EAPs, active shooter plans/guidance.
- 4th of July, HOOCR, Sail Boston, Marathon
 - Maps, Plans, Planning/Security meetings.
- COVID - work with Andy Yee on COVID-19 Outdoor Recreation Facility Restroom Cleaning Best Practices
- Contribute to the EEA Emergency Management/Health and Safety Team
- Contribute to the DCR Statewide Safety Committee

dcrr 4th of July Event Logistics Map



Legend

Lighting and VMS

Type

- Lighttower
- VMS

Gates



Blockade Vehicles



Cars Only Signs



Traffic Control



Looking ahead:



Additional work with other DCR divisions to improving coordination for emergency preparedness by developing procedures and protocols on for various emergency events



Interagency tabletop exercises

Thank you

Dennis Fitzpatrick

857-292-3821

Dennis.A.Fitzpatrick2@mass.gov

v

