

Commercial Organics Diversion Resources & Case Studies

Organics Subcommittee Meeting

June 1, 2022



1



FREE ASSISTANCE FOR BUSINESSES & INSTITUTIONS

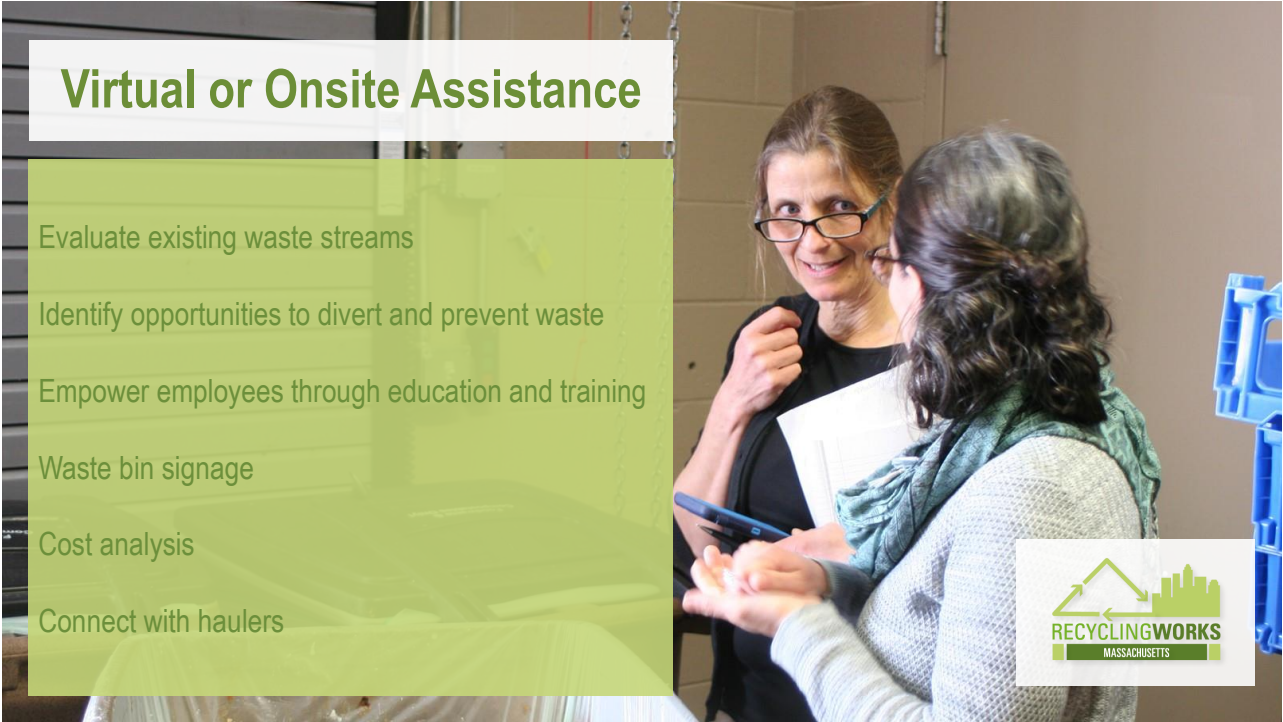
RecyclingWorks MA is funded by MassDEP, delivered under contract by the Center for EcoTechnology



recyclingworksma.com



2



Virtual or Onsite Assistance

- Evaluate existing waste streams
- Identify opportunities to divert and prevent waste
- Empower employees through education and training
- Waste bin signage
- Cost analysis
- Connect with haulers



MASSACHUSETTS WASTE BANS

Commercial food waste
(threshold reduction to .5 ton/wk, effective Nov 1, 2022)

Effective Nov 1, 2022: Textiles & Mattresses & Box Springs

Cardboard & paper

Metal, glass, and plastic containers

Construction & demolition materials

Yard waste

White goods

recyclingworksma.com/waste-bans-and-compliance/



Massachusetts Commercial Food Waste Ban

Current: Entities generating 1 ton or more of food material per week currently subject

Update effective Nov 1, 2022: Entities generating 1/2 ton or more of food material per week

recyclingworksma.com/commercial-organics-waste-ban/

6

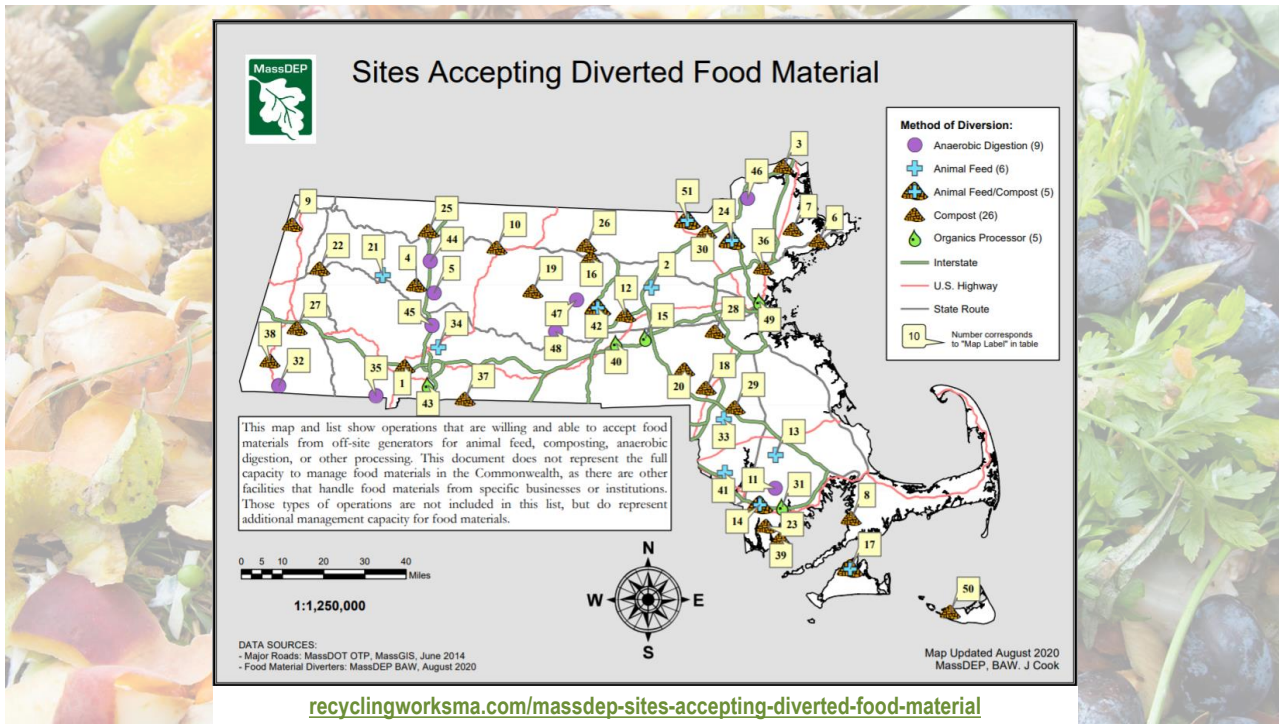
One-half ton of food waste fills approximately four of these 64-gallon carts.

	Average Measurement	
Meals Served [Full-Service]	1	lbs/meal
Meals Served [Limited-Service]	0.5	lbs/meal
Employees [Full-Service]	3,000	lbs/employee/year
Employees [Limited-Service]	2,200	lbs/employee/year
Disposed Waste ¹ [Full-Service]	66	% of disposed waste by weight
Disposed Waste ¹ [Limited-Service]	51	% of disposed waste by weight

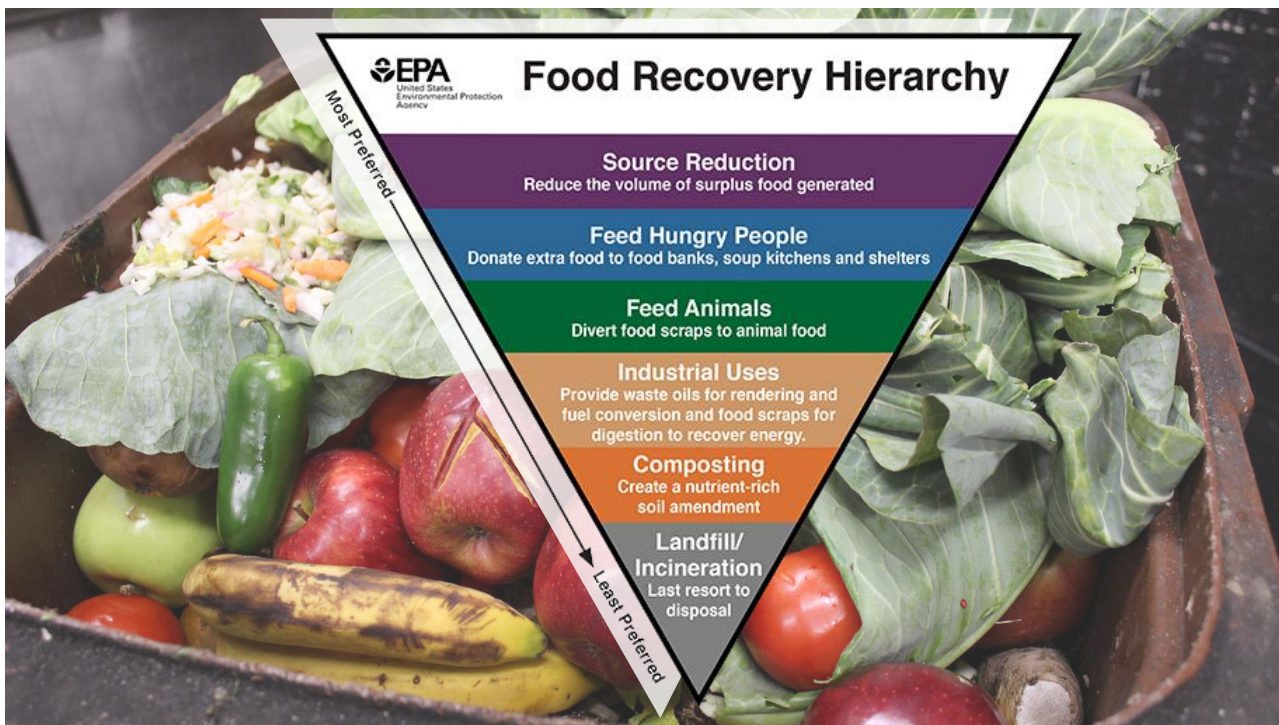


Estimating Food Waste Generation

7



8



9

Sharing Best Practices: Blogs, Case Studies, Social Media

Blog Post

The Columns at Rockwell Place Helps Residents Divert Food Waste for Composting

Emma Sabella February 1, 2022

In 2017, developer and property manager J. Rockwell Allen (Rocky) converted a long-vacant building on the former Northampton State Hospital site into The Columns at Rockwell Place (The Columns), a LEED-certified multifamily property comprising of 25 condominium units. The Columns offers residents electric car chargers, recycling, and food waste collection for composting at no cost.

During the renovation of the property, more than 90% of construction and demolition (C&D) materials such as masonry, gypsum wallboard, and cardboard were collected separately in designated bins and recycled. As a result of this environmentally responsible effort, the building received two LEED credits for construction and demolition waste and recycling. Effective planning and communication between the general contractor, subcontractors, and waste hauler led to more than 120 tons of C&D material being diverted from disposal. Check out [The Columns Video Case Study](#) to learn more about the 2017 project, and the [RecyclingWorks Construction and Demolition Materials Guidance](#) to learn more about C&D reuse and recycling best practices.

In the fall of 2020, RecyclingWorks in Massachusetts (RecyclingWorks) worked with Rocky to help implement a residential food waste collection program at The Columns. Rocky not only shared the value and benefits of diverting food waste from disposal with residents, but he also purchased and



Brandeis University

Learn how Brandeis University, a research institution in Waltham, implemented a dorm and public space recycling program with support from ...

[Read More](#)

Home City Development, Inc.

Learn how Home City Development, Inc. (HCDI), a non-profit real estate developer based in Springfield, worked with RecyclingWorks to salvage ...

[Read More](#)

RecyclingWorks MA

Published by Samantha Salvatore · January 14, 2022

Last week, we gathered a group of reuse outlets at a future construction site in the City of Boston. Cramshaw Construction and National Development are excited to partner with these organizations to help keep usable cabinets, windows, molding, and other valuable materials from being thrown away. Thank you [City of Boston](#) for connecting us with this project, and thank you [Boston Building Resources](#), [Ecobuilding programs](#), [Nor East Architectural Antiquary](#), and [Furniture Trust](#) for joining us!



6,822 People reached 414 Engagements [Boost post](#)

10



APRONAUG

BREWING COMPANY

Gives surplus foods to employees on a “share shelf”

Tracks food waste with clear containers, reducing portion sizes

Repurposes foods into new meals – arugula into pesto

11



Saus Boston

Reduced waste and disposal costs by serving fries with the skins on instead of peeling them

recyclingworksma.com/local-boston-restaurant-finds-success-source-reduction-composting/

12



- Donated cracked/broken/smudged treats to the South Shore Community Action Council
- Reuses dough scraps
- Composts crumbs
- Reuses packaging



Valo's 3rd birthday enjoying Preppy Puppy treats

13

Nashoba Brook Bakery



Donates surplus bread and diverts scraps to feed cows in Concord, MA

Too Good To Go partnership: Bakery customers receive variety of unsold artisan breads in surprise bags at reduced prices

14



16

The Lenox Hotel

Excess edible food is donated to the Boston Rescue Mission

Pre- and post-consumer food scraps are separated and composted

Program success linked to employee education



17



Established a performance plan for third-party food service provider

Leanpath technology used to track food waste

Educational signage across campus

18



Hingham High School

Composts food scraps from the cafeteria on-site

Transitioned from polystyrene trays to compostable trays

Compostable trays are used in the on-site composters as layering/"browns"



thegreenteam.org/the-green-team-hingham-high-school-case-study/

19



Engaging With Stakeholders

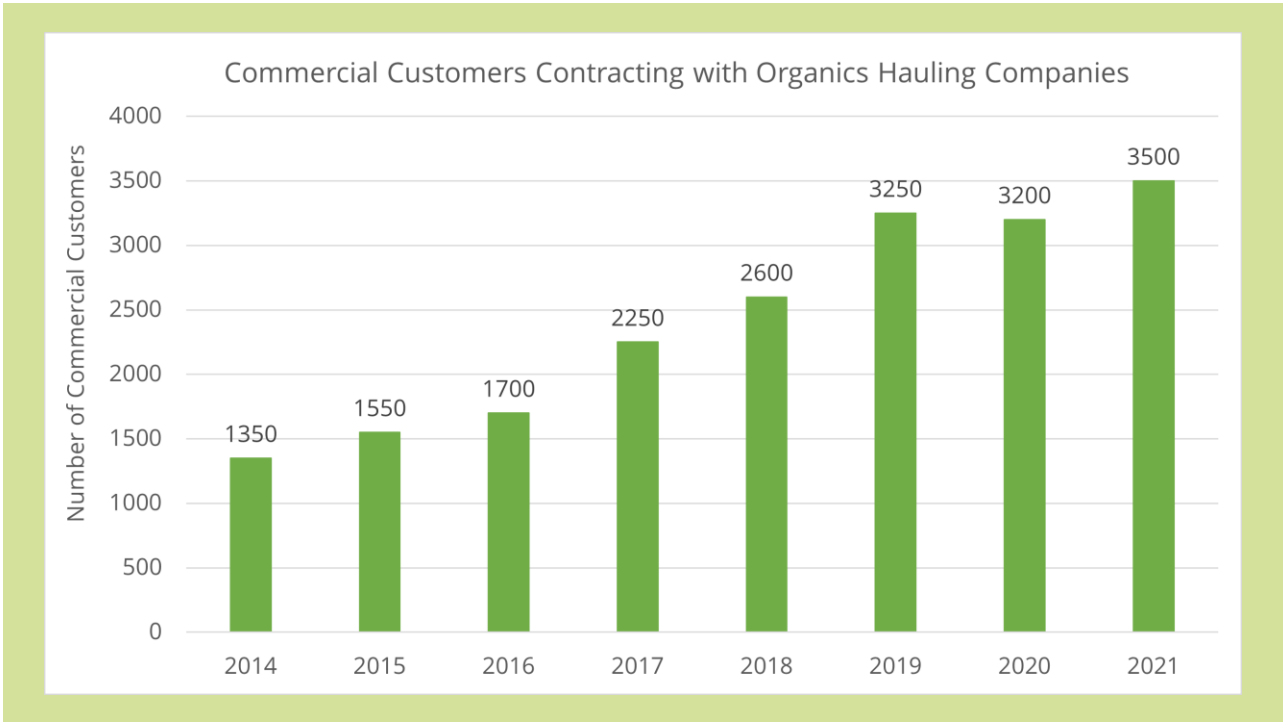
Increase awareness

Collect marketplace data

Develop resources & guidance documents

Host roundtables

20



21



22

RESTOS DE COMIDA/RÈS MANJE

Compostagem

Todos restos de comida
Guardanapos e Toalhas
de papel

Frutas, vegetais,
laticínios, pães, grãos,
carnes e peixes,
ossos e conchas, ovos



Konpos

Tout kalite rès manje
Napkin ak sèvyèt papye

Fwi, legim, pwodui
letye, pen, grenn,
vyann ak pwason,
zo ak koki, ze

NÃO

Proibido luvas, plásticos,
embalagens, isopor e
outros lixos



NON

Pa mete gan, ni plastik,
ni anbalaj, ni stiwofom,
ni okenn lòt fatra



23



FOOD SCRAPS RESTOS DE ALIMENTOS



ALL FOOD SCRAPS

Fruit & vegetable peels
Dairy, eggs, grains, bread
Meat, fish, poultry
Bones, shells



TODOS LOS RESTOS DE ALIMENTOS

Pieles de frutas y vegetales
Lácteos, huevos, granos, pan
Carne, pescado, aves
Huesos, cáscaras

NO

Oysters/Clam Shells
Tissues, napkins, paper towels
Compostableware
Coffee cups, wrappers
Plastic, metal, glass



NO

Ostras/Conchas de Almejas
Pañuelos de papel, servilletas,
papel toalla
Utensilios compostables
Taza de café, envoltorios
Plástico, metal, cristal



24

THANK YOU!

Abbey Massaro
Abbey.Massaro@cetonline.org
(413) 348-1640

info@recyclingworksma.com
888-254-5525

www.recyclingworksma.com

