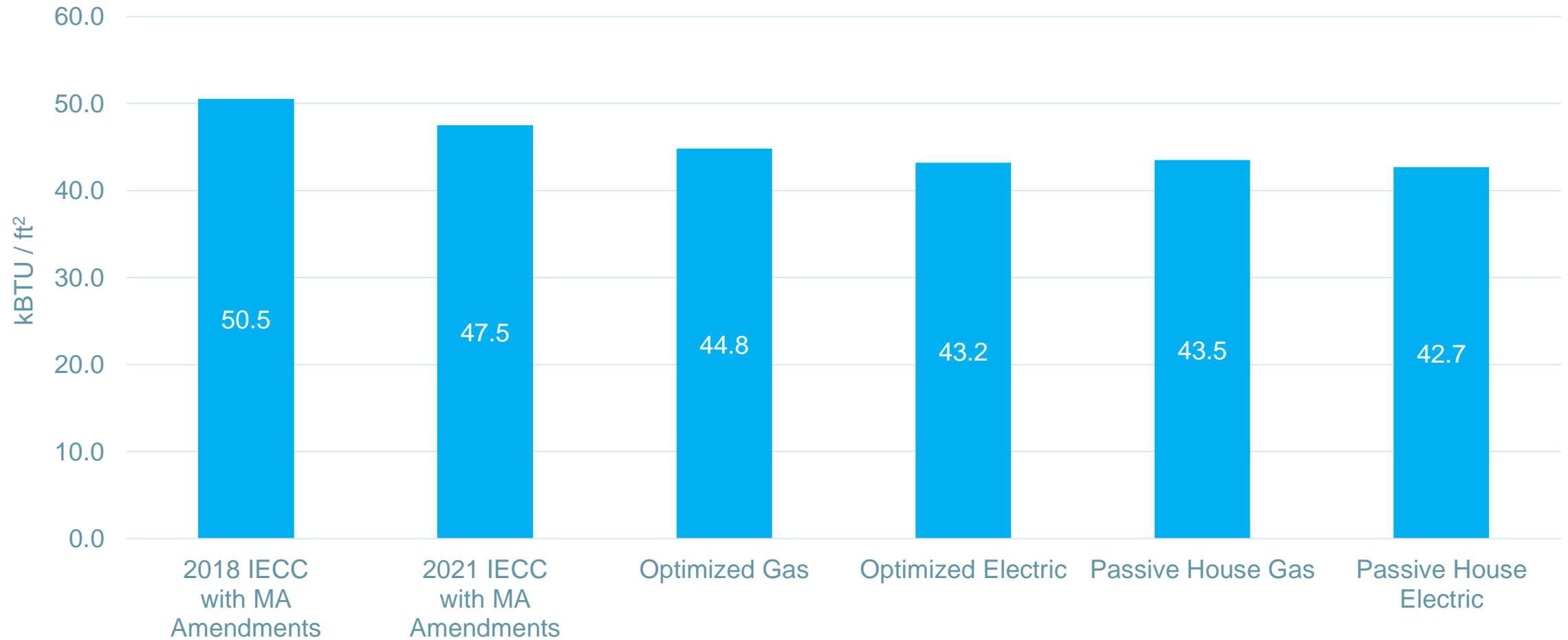


# Primary School

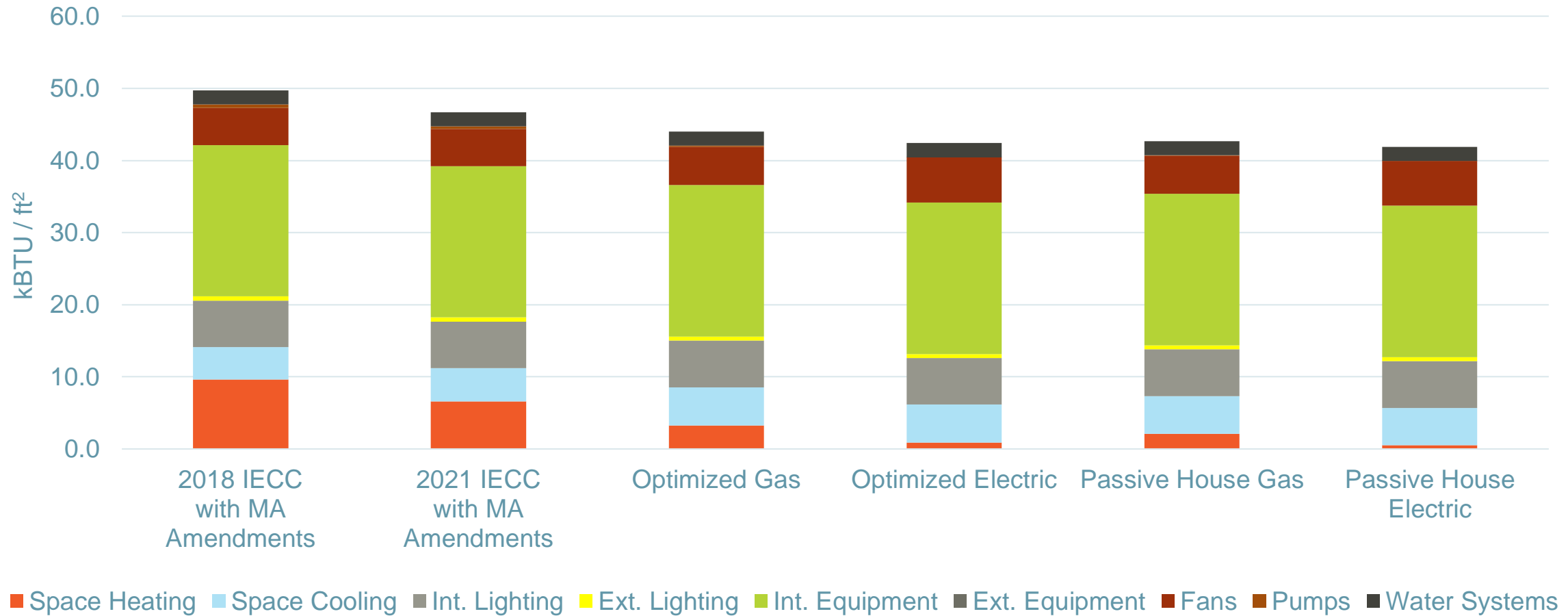
## Site EUI



# Primary School



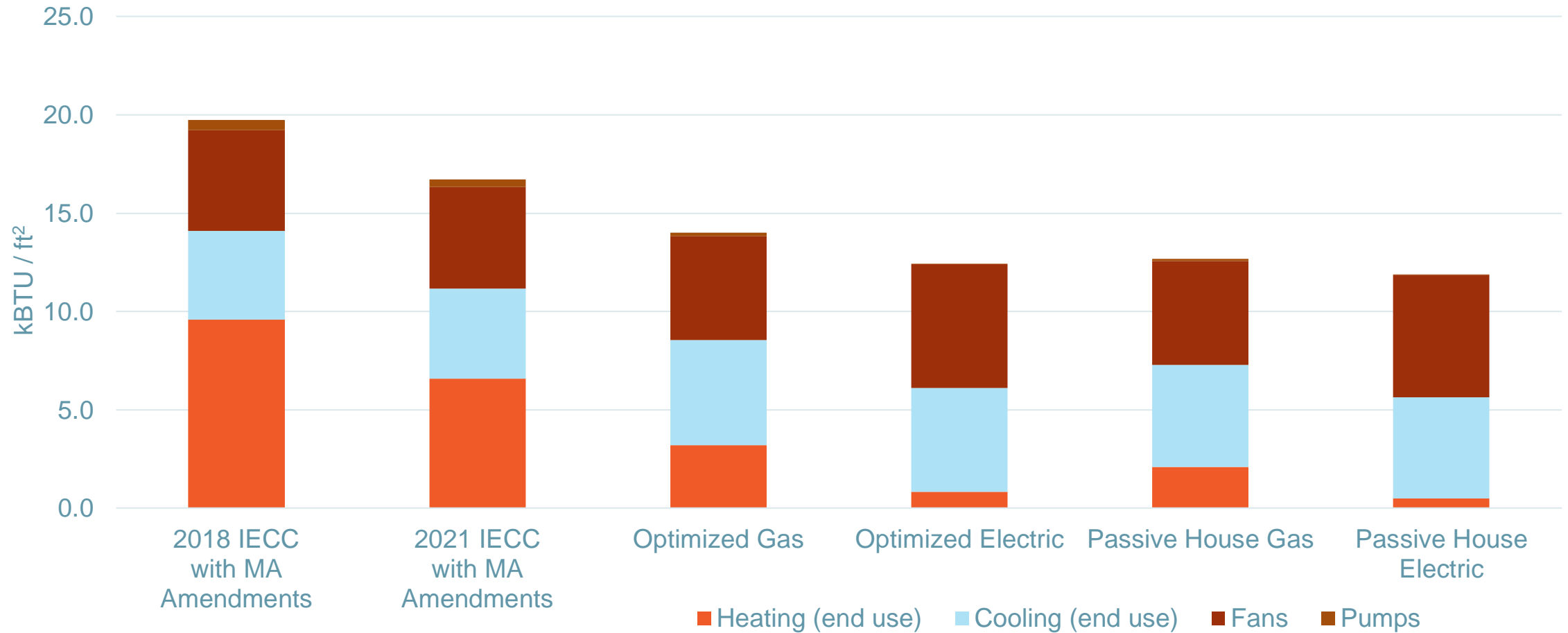
## Site EUI - by Energy End Use



# Primary School

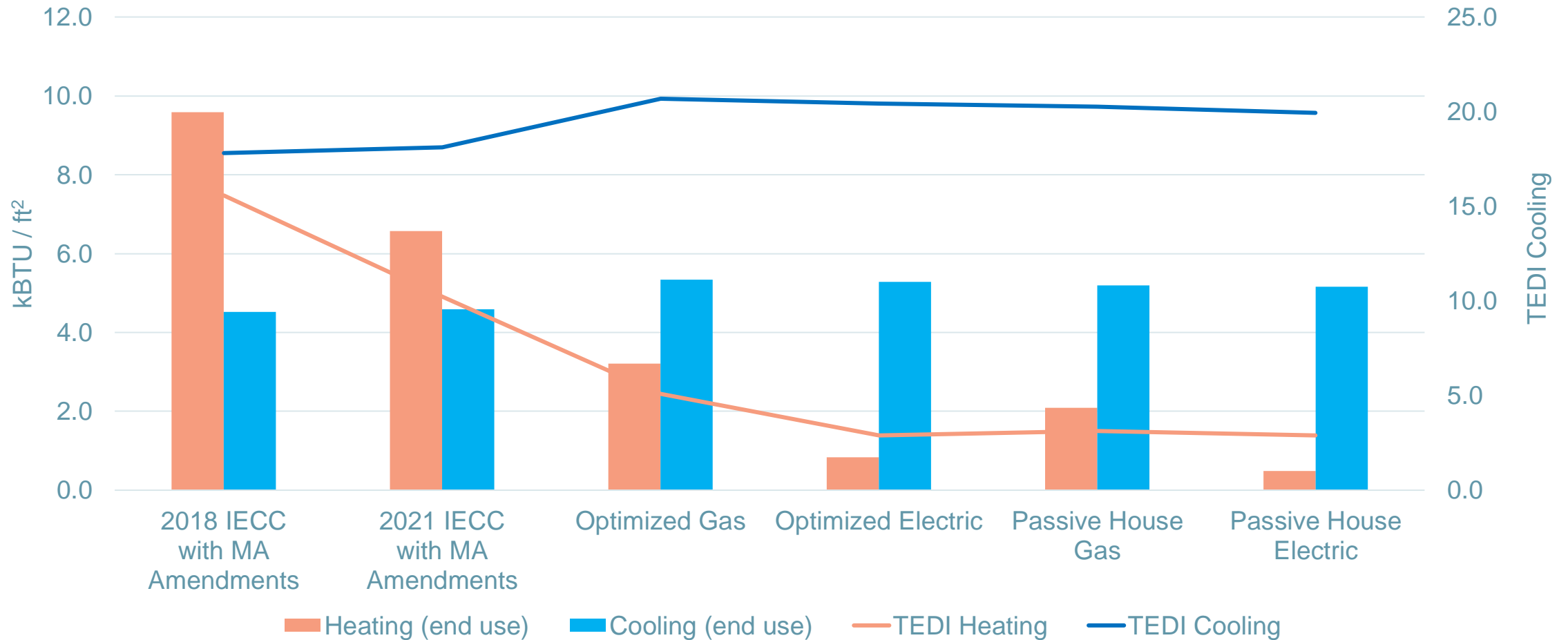


## Site EUI – HVAC End Uses



# Primary School

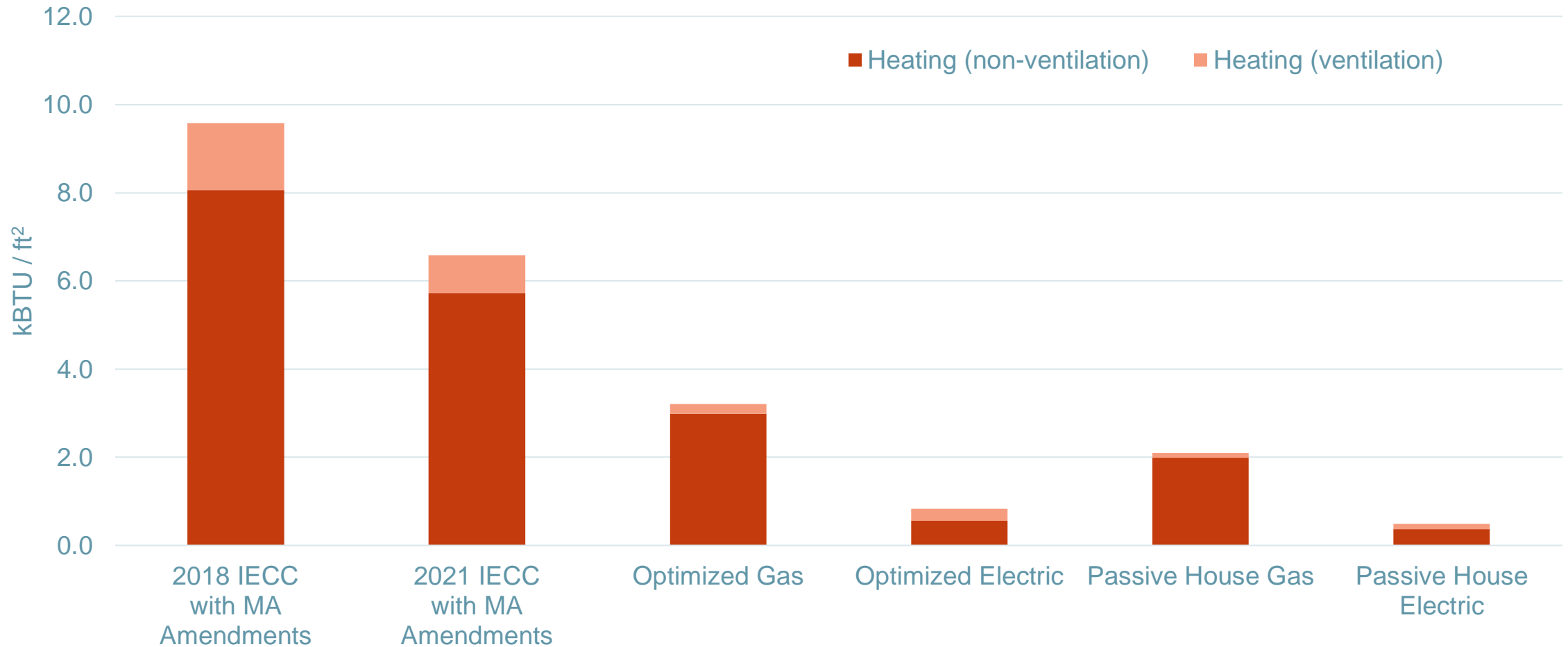
## Heating / Cooling End Uses and TEDIs



# Primary School



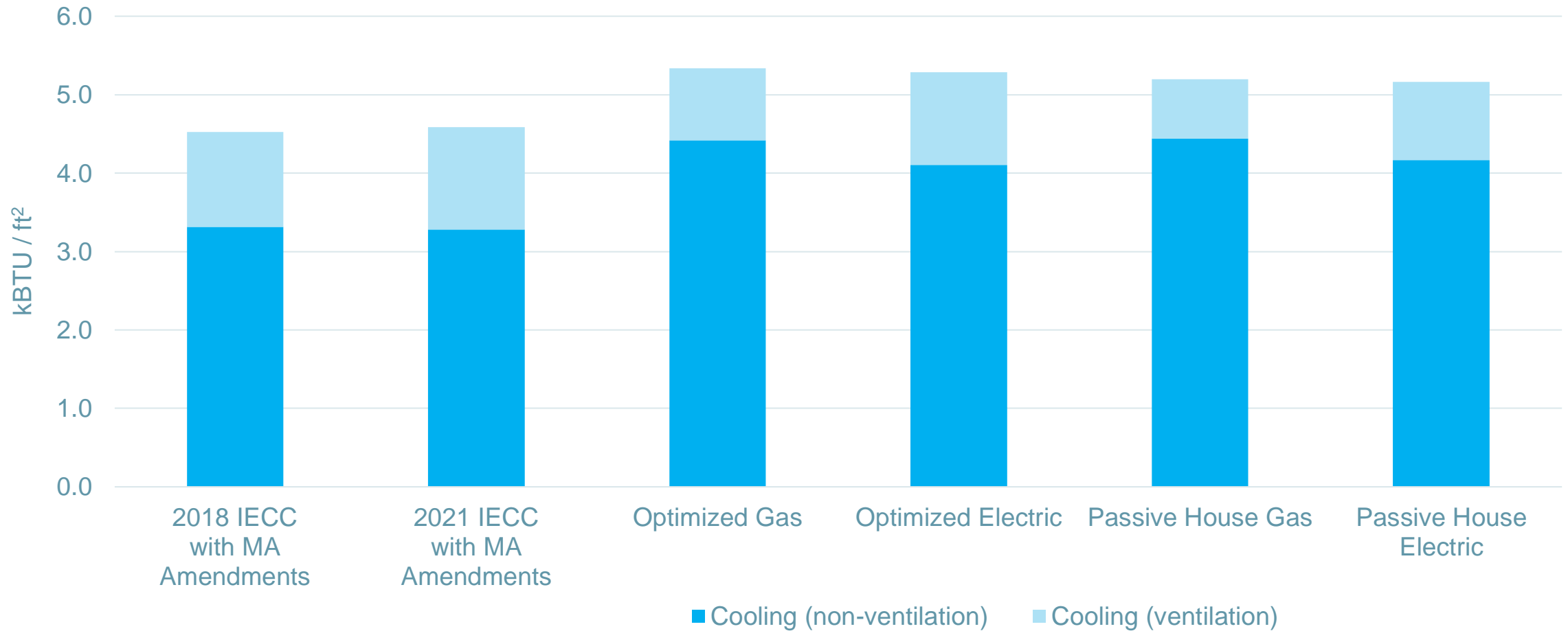
## Heating – Ventilation Energy



# Primary School

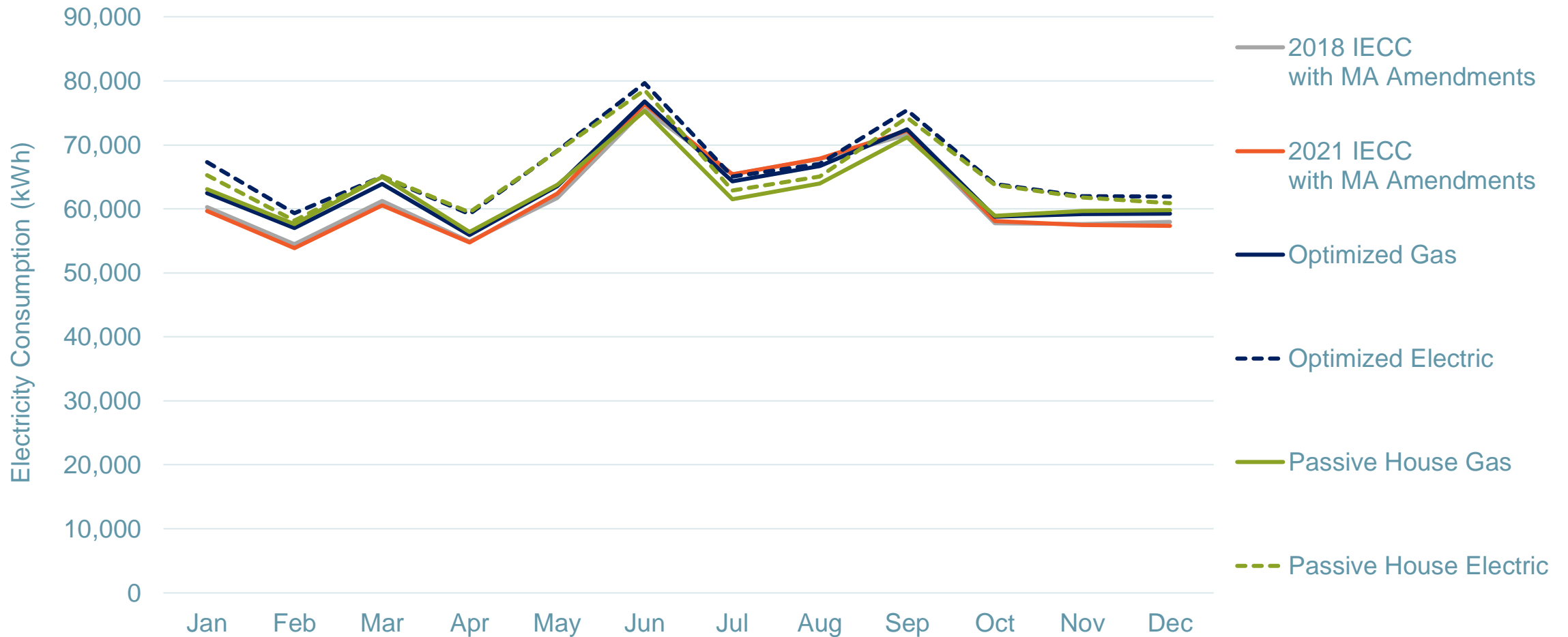


## Cooling – Ventilation Energy



# Primary School

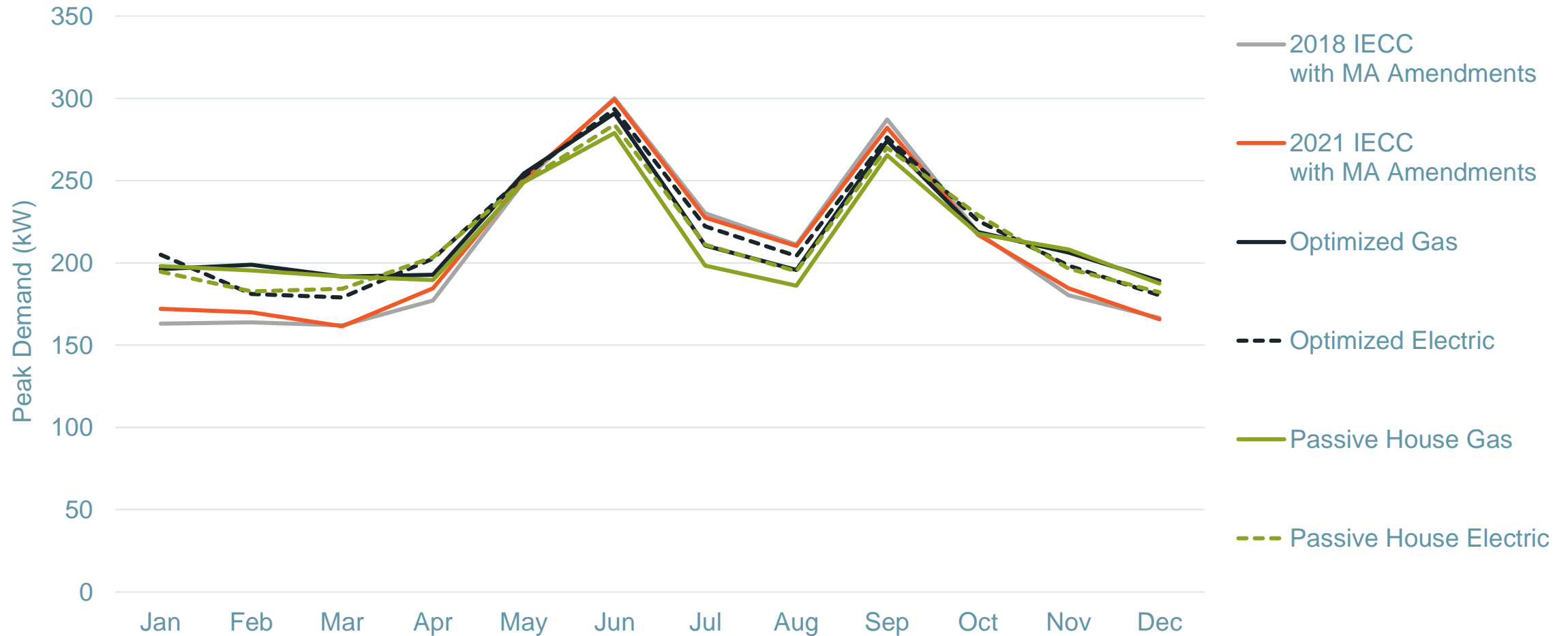
## Electricity Consumption by Month



# Primary School



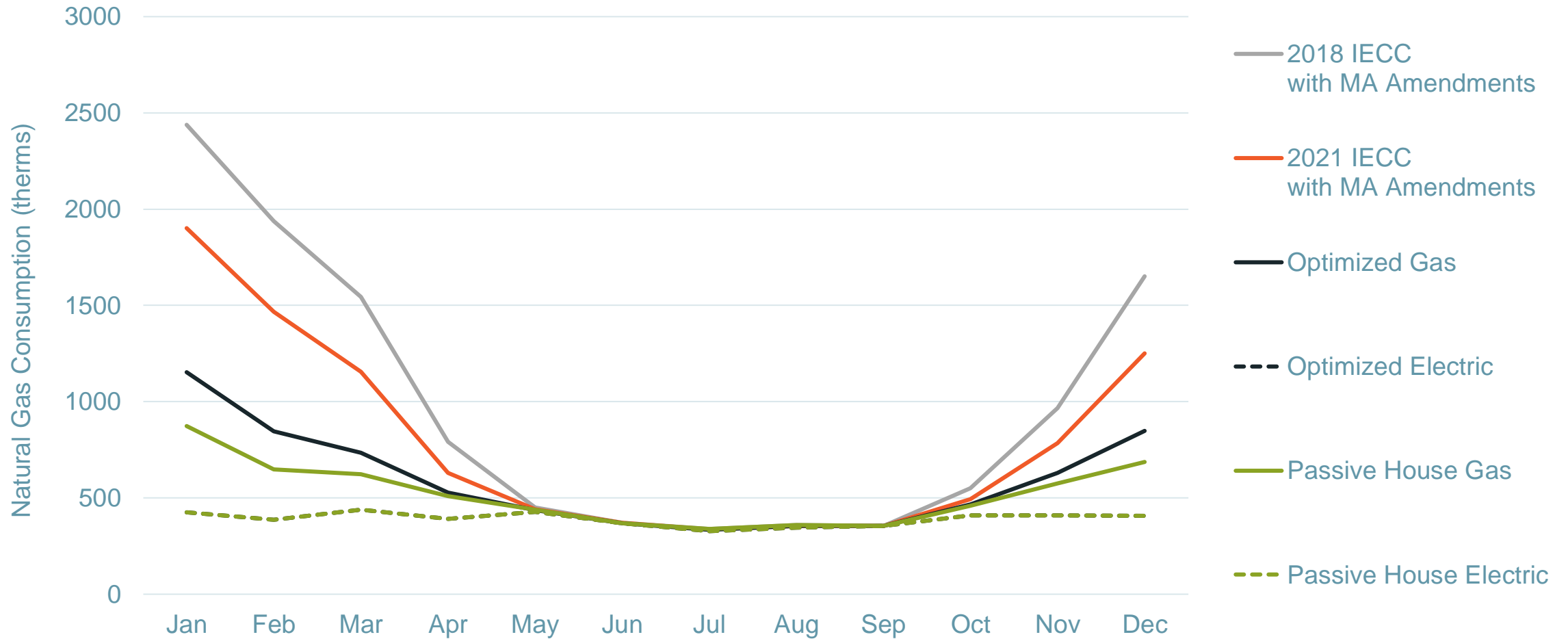
## Electricity – Monthly Peak Demand





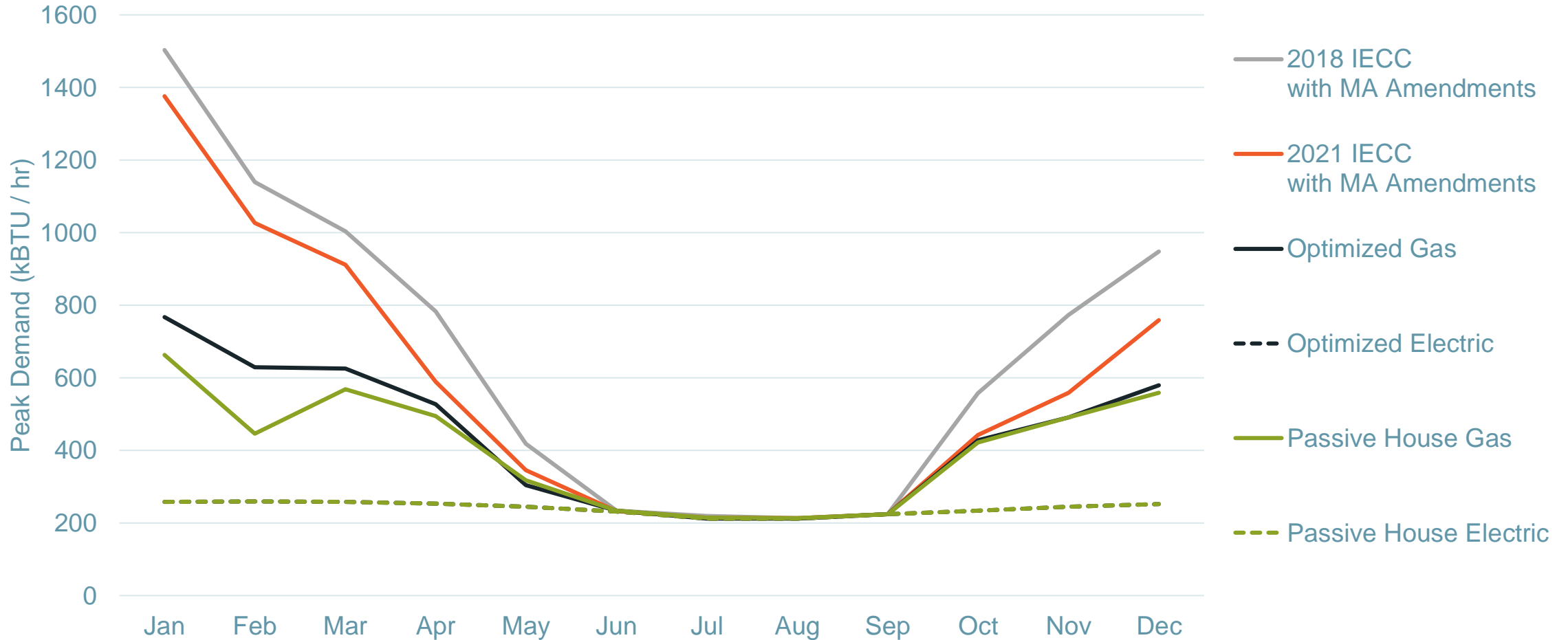
# Primary School

## Natural Gas – Monthly Consumption



# Primary School

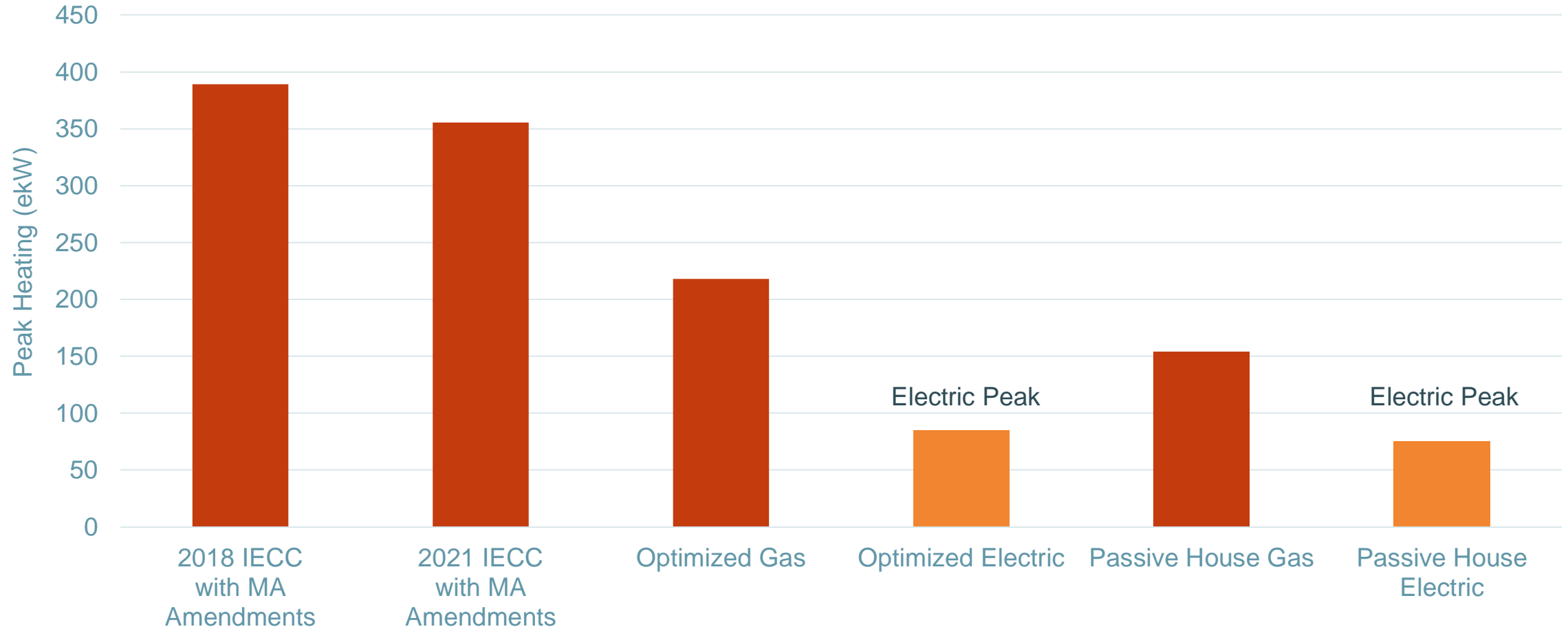
## Natural Gas – Monthly Peak Demand



# Primary School



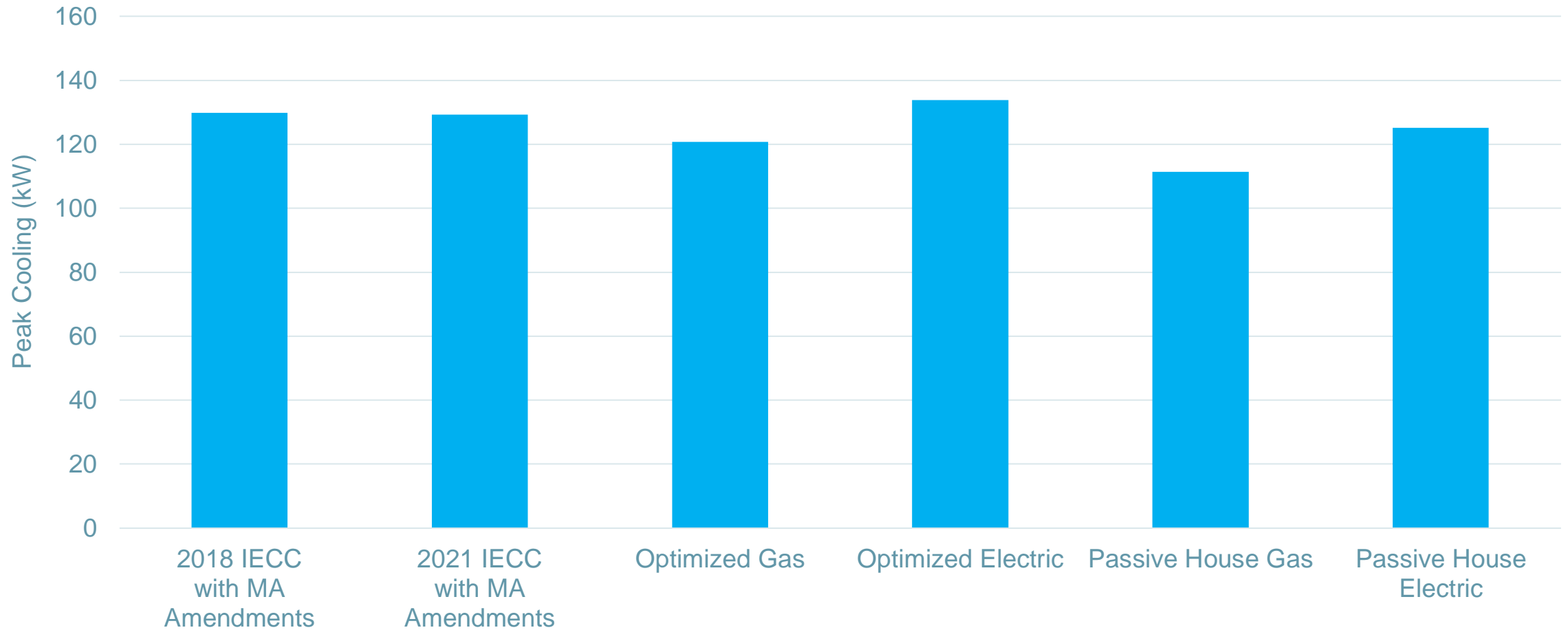
## Annual Peak Heating - Building



# Primary School



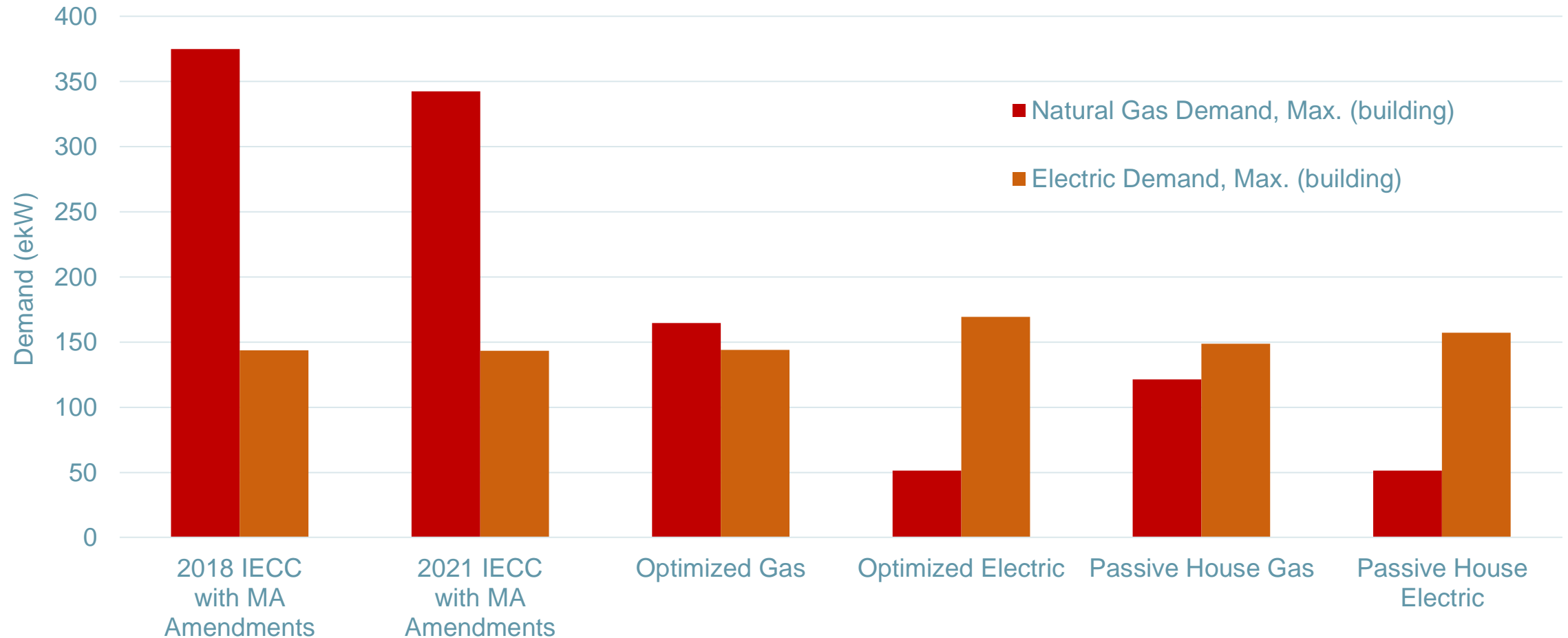
## Annual Peak Cooling - Building



# Primary School



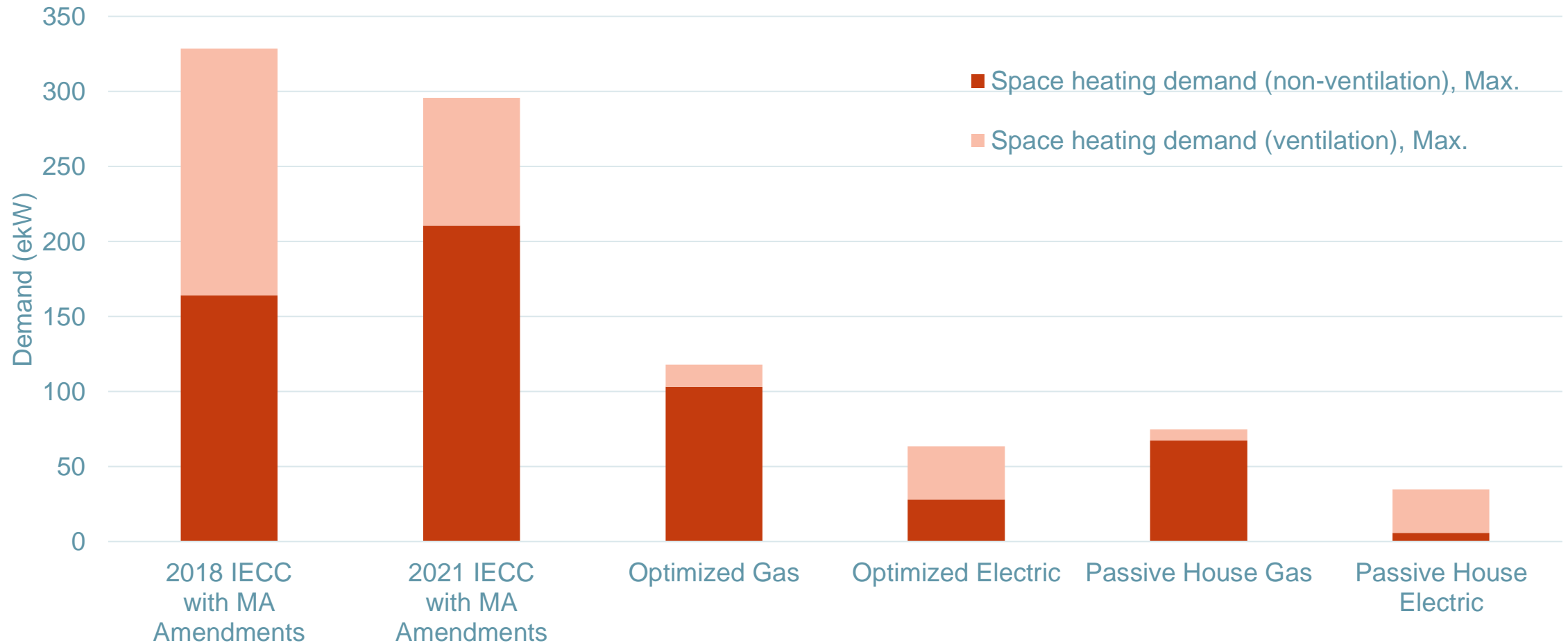
## Heating Design (3-hour Coldest Period – January 30, 9:00am)



# Primary School



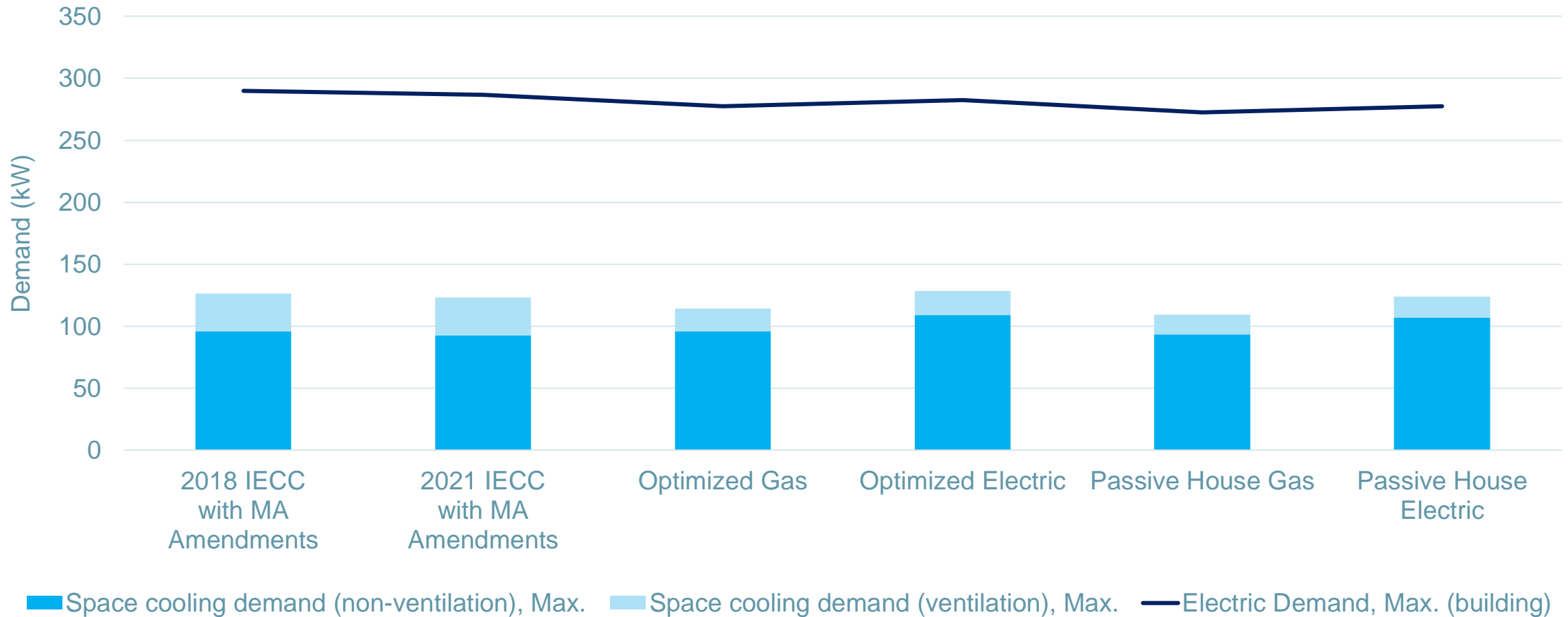
## Heating Design (3-hour Coldest Period – January 30, 9:00am)



# Primary School

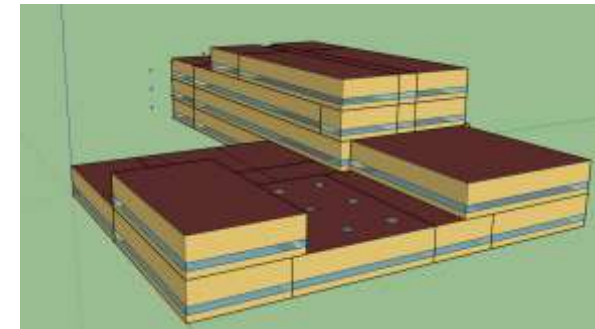
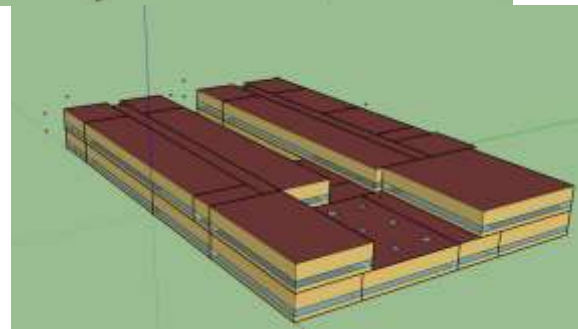
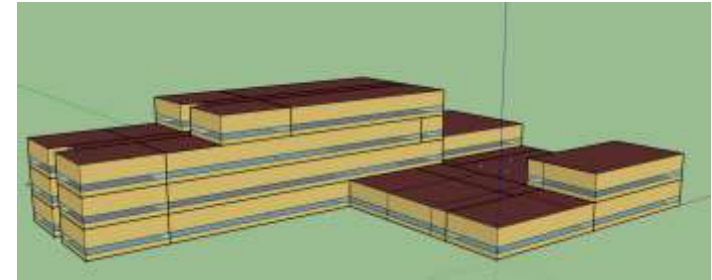
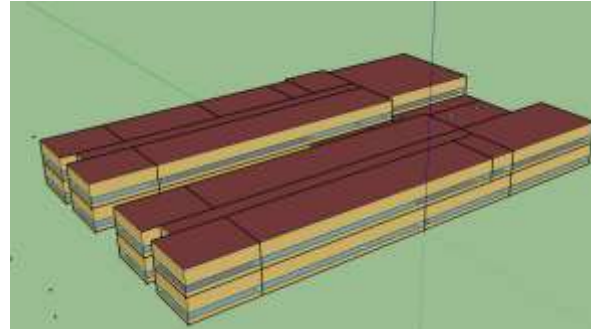


## Cooling Design (3-hour Warmest Period – June 2, 2:00pm)



# Primary School

## Stress testing- Form



	<b>Optimized - Electric</b> <b>73,686 sf.</b>	<b>Optimized - Electric</b> <b>73,686 sf.</b>
TEDI Heating	2.2 kbtu/sf./yr.	2.0 kbtu/sf./yr.
TEDI Cooling	17.3 kbtu/sf./yr.	17.9 kbtu/sf./yr.