

School and District Profiles

<http://profiles.doe.mass.edu/>



For information about Massachusetts districts or schools, a great place to start is the School and District Profiles website. Profiles contains detailed data and reports that cover a wide range of information on the Commonwealth's public districts and schools, including:

- **Student enrollment**
- **State assessment results**
- **Graduation rates**
- **District expenditures**
- **Accountability reports**

Access

All of the data in School and District Profiles is available to the public. In most cases, you will be able to obtain information at the state, district, or school level. You can also use the data filters to view information for special populations, such as English Language Learners and Special Education students.

For questions about School and District Profiles, you can contact the Department of Elementary and Secondary Education at data@doe.mass.edu.

<http://profiles.doe.mass.edu/>

A screenshot of the School and District Profiles website. The header includes the Massachusetts Department of Elementary and Secondary Education (ESE) logo and navigation links: ESE Home, ESE Site Index, State Services, and State Agencies. Below the header is a blue navigation bar with tabs: News, School/District Profiles (selected), School/District Administration, Educator Services, Assessment/Accountability, and Family & Community. The main content area has a "Quick Search..." box and a "What's new in Profiles:" section with a link to "Redefining Low Income - A New Metric for K-12 Education Data". Below this is a section for "Locate a School, District or Program; Create a Directory or Export Mailing Labels:" with dropdown menus for "Select Organization Type:" and "City/Town (optional):", and a "Search" button. A text block explains that the department collects data from schools and districts, some published as School or District Profiles. Below this is a "Search for your Report Card:" section with a text input and a "Search" button. On the right side, there is a "Quick Statewide Reports:" dropdown menu and three buttons: "State Profile", "Geographic Search", and "People Search". Orange arrows point from a central orange box to the "Quick Search..." box, the "What's new in Profiles:" section, the "Locate a School..." section, the "Search for your Report Card:" section, and the "State Profile", "Geographic Search", and "People Search" buttons.

Massachusetts Department of Elementary and Secondary Education (ESE)

• ESE Home • ESE Site Index • State Services • State Agencies

Mass.gov

News School/District Profiles School/District Administration Educator Services Assessment/Accountability Family & Community

Quick Search...

Profiles Home Search/Directories Statewide Reports State Profile Profiles Help

What's new in Profiles:
6/4/2015 [Redefining Low Income - A New Metric for K-12 Education Data](#)

Locate a School, District or Program; Create a Directory or Export Mailing Labels:
Select Organization Type: City/Town (optional):

The Massachusetts Department of Elementary and Secondary Education collects a variety of data from schools and districts in the state, some of which is published as a School or District Profile. Directories, reports and people from individual organizations can also be found here.

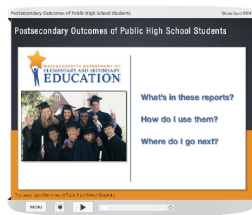
Search for your Report Card:

Quick Statewide Reports:

State Profile
Geographic Search
People Search

There are many different ways to navigate Profiles to find information about districts and schools. You can find information through:

- Quick search
- School/District report card search
- Geographic search
- Statewide reports
- And more!



Instructional Resources

Look for the "Learn More" icon to access tutorials providing additional support on using the data.