

Welcome!

Shrewsbury Route 20 Safety & Operations
Improvements Master Plan
Shrewsbury, MA

Public Information Meeting
Shrewsbury, MA
March 4, 2020 | 7:00 PM

Introduction

MassDOT District 3

- **Barry Lorion**
- **Erin Kinahan**

Howard Stein Hudson – MassDOT's Design Consultant

- **Paul Nelson**
- **Bob Stathopoulos, P.E., PTOE**

Tonight's Agenda

- **Overview of the Master Plan**
- **Key Findings from the Plan**
- **Steps Taken to Address Comments**
- **Likely Future Improvement Projects**
 - Grafton Street Intersection
 - Lake Street Intersection
 - South Street to Valente Drive
- **Next Steps for Implementation**
 - Project Initiation
 - Road Safety Audit

What is a Master Plan?

- **Creates a unified vision for a roadway corridor that is too long to be improved all at once**
- **Identifies and quantifies primary factors driving the need for improvements**
- **Provides a conceptual design to improve conditions and identifies potential implementation strategies**
- **It is not the final design, design details will be addressed separately**
- **Does not guarantee that all aspects of the Plan will be implemented**

Master Plan – Full Study Area



Shrewsbury, MA

Worcester City Line to Route 9/Route 20 Interchange

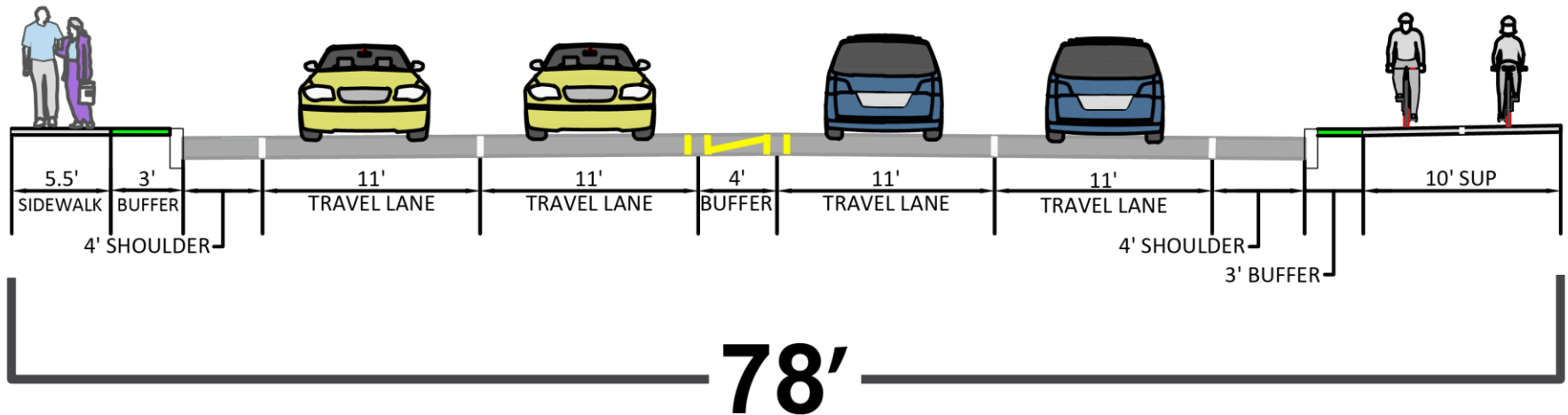
Key Findings

- **Intersection and Corridor Safety**
 - Valente Drive / Walnut Street
 - South Street
 - Stoney Hill Road
 - Grafton Street / Route 140 Interchange
 - Lake Street
- **Congestion / Access Management**
- **Additional Capacity Needed**
 - To support current traffic and future traffic growth fueled by private development
- **Lack of Bicycle and Pedestrian Accommodations**

Proposed Master Plan

- **Two travel lanes in each direction on Route 20**
 - Additional turning lanes at signalized intersections
- **Traffic signal improvements**
- **Pedestrian and bicyclist facilities**
 - Shared Use Path and sidewalk on Route 20
- **Safety improvements at deficient locations**
- **Master Plan cross-section has trade-offs due to potential ROW and Environmental Impacts**

Proposed Master Plan (cont'd)



EXISTING RIGHT-OF-WAY WIDTH VARIES FROM APPROXIMATELY 53' TO 75'

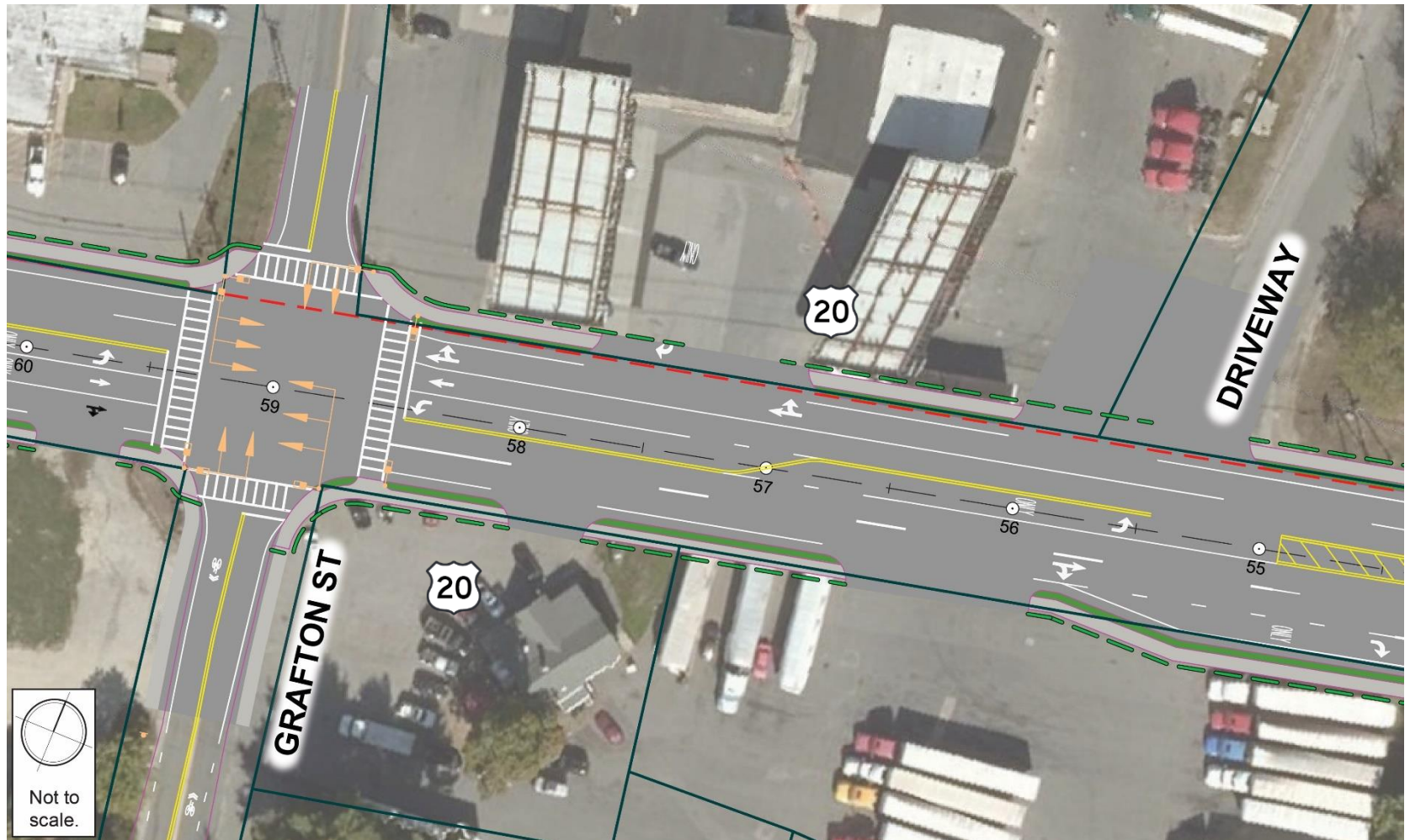
Addressing Public Feedback

- **Westborough Station cut-throughs on Walnut Street**
 - Observations show some traffic likely using Walnut Street
 - Master Plan concept diverts Route 20-bound traffic from Walnut Street to Valente Drive
- **Safety turning from South Street intersection**
 - Intersection does not meet warrants for a signal and adding a signal would also create new safety issues due to close spacing
 - Master Plan concept prohibits left turns from South Street
- **Safety entering Route 20 from Stoney Hill Road**
 - Intersection does not meet warrants for signal
 - Master Plan concept allows for safer two-stage left-turn

Future Improvement Projects

- **Grafton Street Intersection**
 - High crash location eligible for dedicated federal safety funds
- **Lake Street Intersection**
 - Jointly funded by Edgemere Developer and MassWorks grant
- **South Street to Valente Drive**
 - New potential project to address safety issues at both intersections
 - Needs to go through project initiation

Grafton Street Intersection



Lake Street Intersection



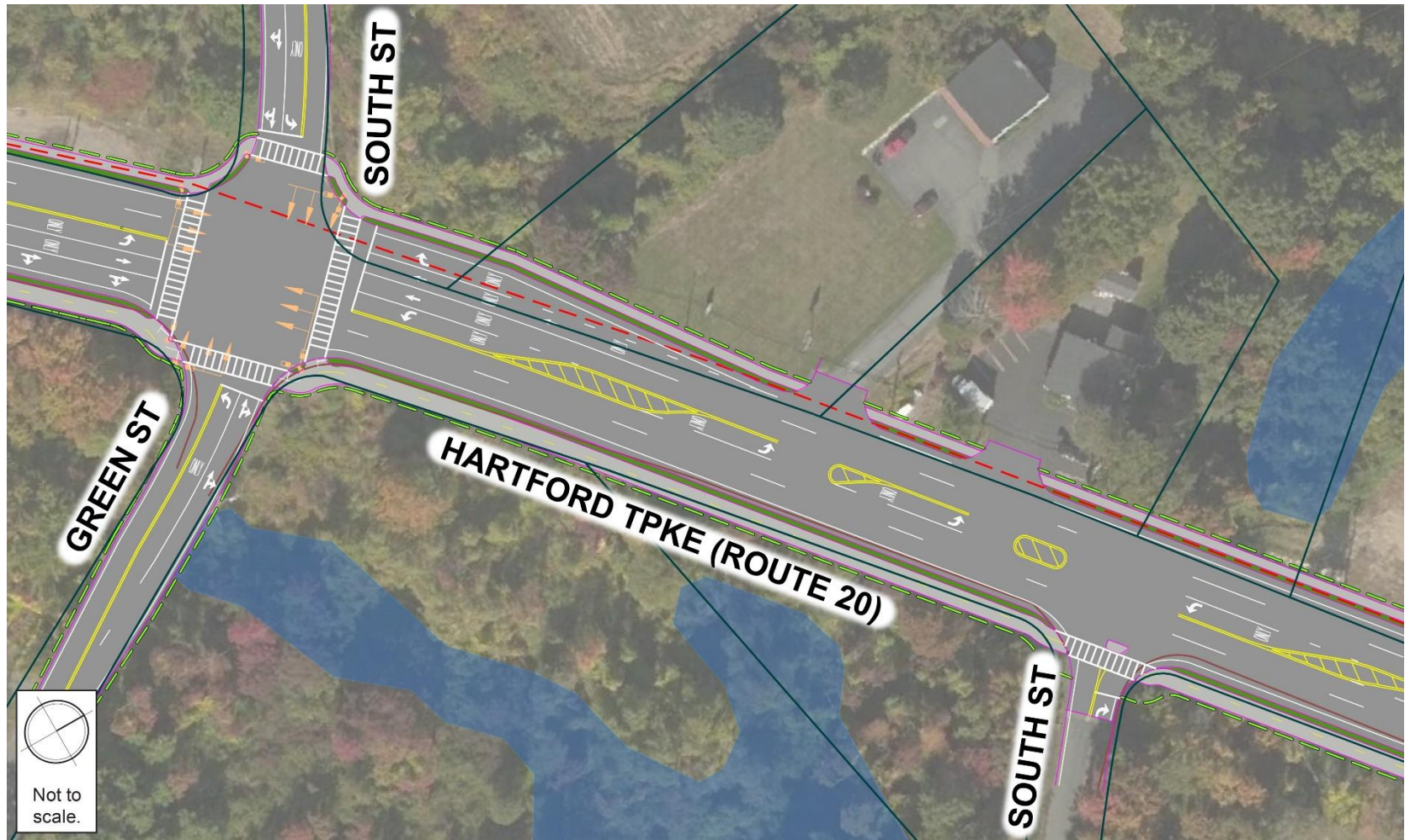
Walnut Street to Valente Drive



Green Street to South Street

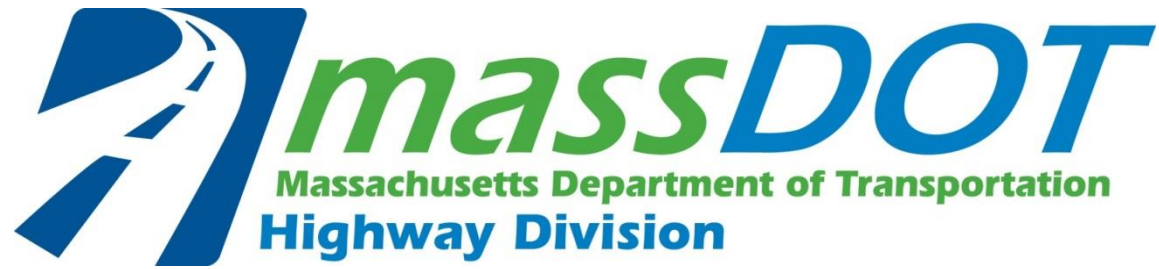


Green Street to South Street



Next Steps

- **Improvement Projects**
 - **Grafton Street** - Complete next phase of design, updated estimated cost, program funds for project
 - **Lake Street** – MassDOT review and approve final design, grant permit for developer to construct improvements
 - **South Street to Valente Drive** – Complete road safety audit and project need /project initiation forms



Thank You

Shrewsbury Route 20 Safety and Operations
Improvements Master Plan
Shrewsbury, MA

Public Information Meeting
Shrewsbury, MA
March 4, 2020 | 7:00 PM