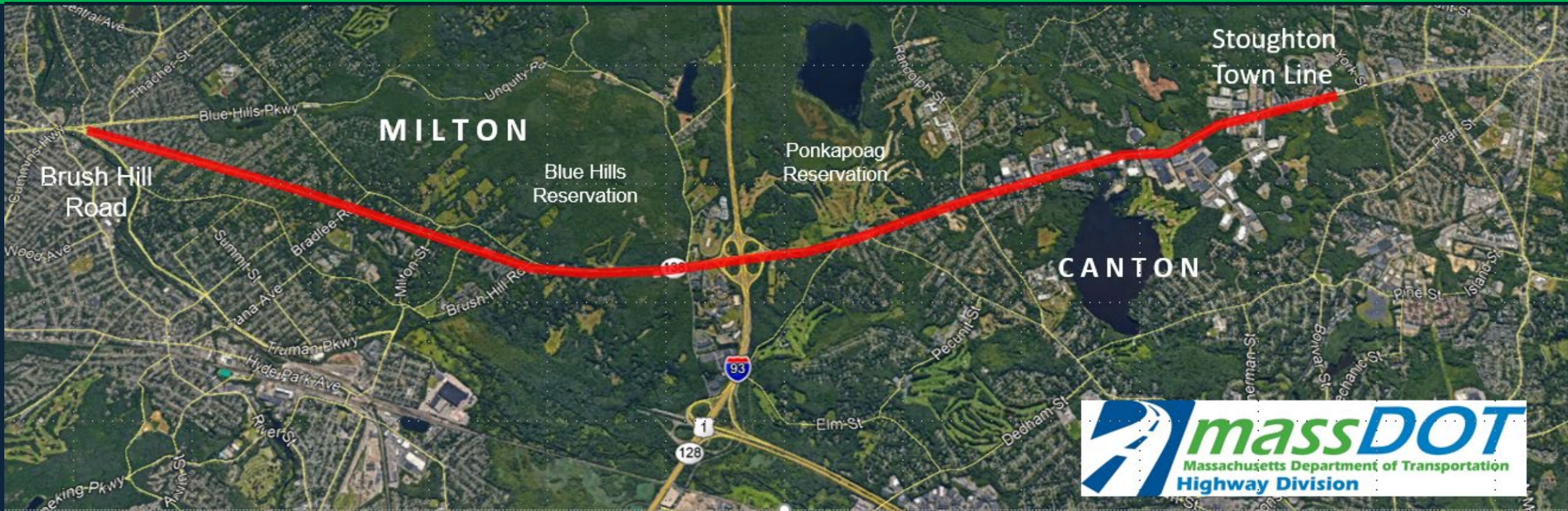


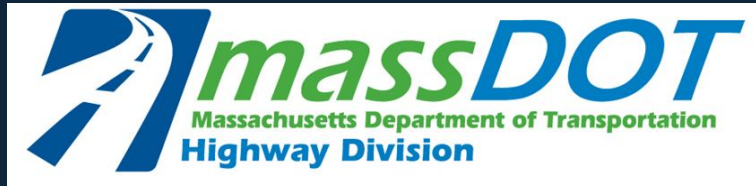
Public Information Meeting Route 138 Reconstruction Complete Streets and Safety Improvements

CANTON AND MILTON, MA | PROJECT FILE NO. 608484

OCTOBER 22, 2019



Project Team and Agency Partners



MassDOT Highway Division
Responsible for Administering the
Project Development Phase



Town of Milton



Greenman-Pedersen, Inc.
Planning, Design & Engineering



Town of Canton



Howard Stein Hudson
Public Involvement



**Department of
Conservation
and Recreation**

MEETING AGENDA:

6:30 – 7:00 Project Overview

7:00 to 8:00 Open House

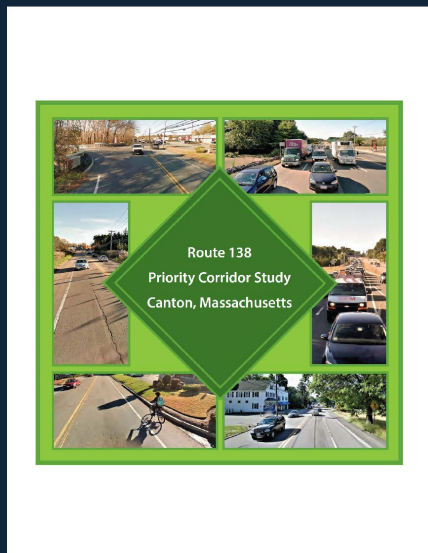
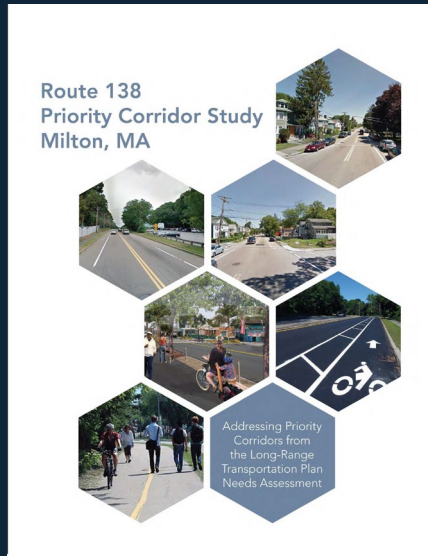
- ✓ Visit Project Stations
- ✓ Review Preliminary Design Concepts
- ✓ Provide Feedback

PROJECT BACKGROUND:


CTPS Route 138 Priority Corridor Study, Milton, December 2018

CTPS Route 138 Priority Corridor Study, Canton, February 2018

MassDOT Project Scheduled for Repaving-
Scope changed to include Safety and
Complete Street Improvements



MASSDOT PROJECT DEVELOPMENT PROCESS:

- ✓ Needs Identification
- ✓ Planning
- ✓ Project Initiation
-  • Environmental Permitting, Design and Right-of-Way Process
- Programming (Identification of Funding)
- Procurement
- Construction
- Project Assessment

MASSDOT PROJECT DEVELOPMENT PROCESS

Continued Public Outreach

- CTPS Study Public Input (2017 – 2018)
- MassDOT Public Meetings
 - Tonight is first MassDOT sponsored public meeting
 - Future meetings will be held as the design progresses

CORRIDOR STUDY PUBLIC FEEDBACK:

MILTON SURVEY – 740 RESPONSES (2018)



Pedestrian and Bicyclist Concerns

- High vehicle speeds
- People want to walk / bike, but are concerned about safety
- 80% of Respondents support 'Complete Streets' solutions

Traffic Concerns

- Congestion
- Safety

CORRIDOR STUDY PUBLIC FEEDBACK

CANTON SURVEY – 360 RESPONSES (2017)

Pedestrian and Bicyclist Concerns

- High volume of traffic
- Lack of sidewalks
- High speed of traffic

Traffic Concerns

- Congestion
- Safety

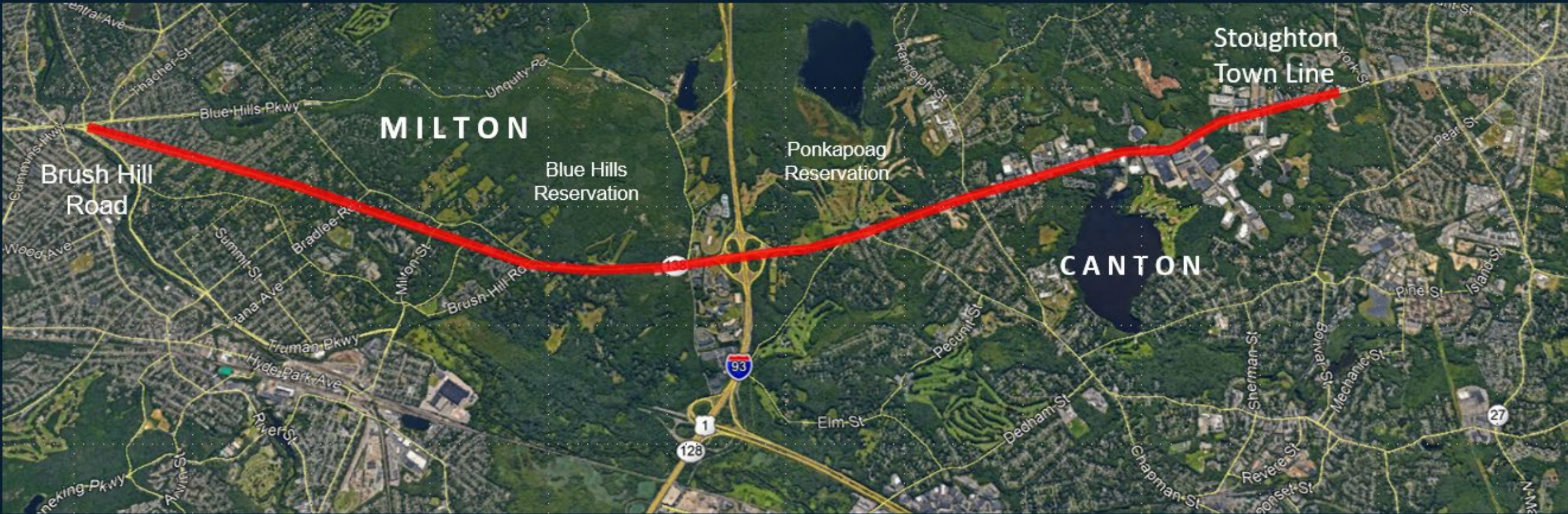


PROJECT OBJECTIVES:

- Improve Safety & Mobility for all Users
 - People Walking
 - People on Bikes
 - People Driving
 - People Riding Transit

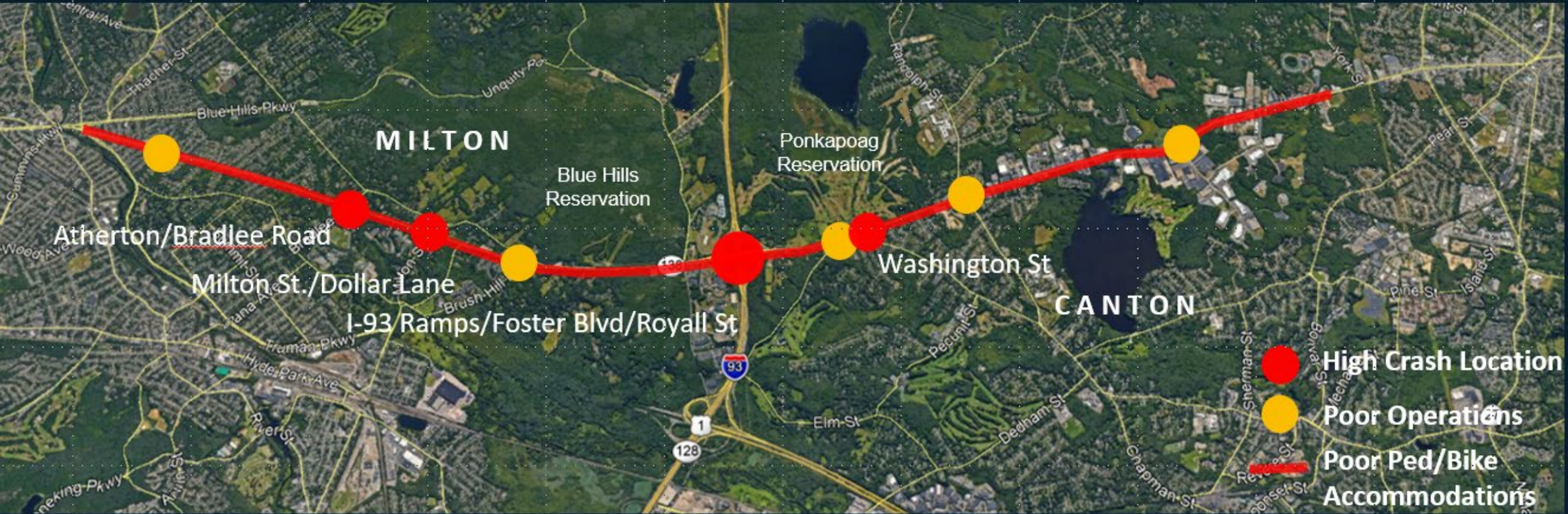
Project design must be consistent with
MassDOT's Healthy Transportation Policy
Directive

PROJECT AREA:

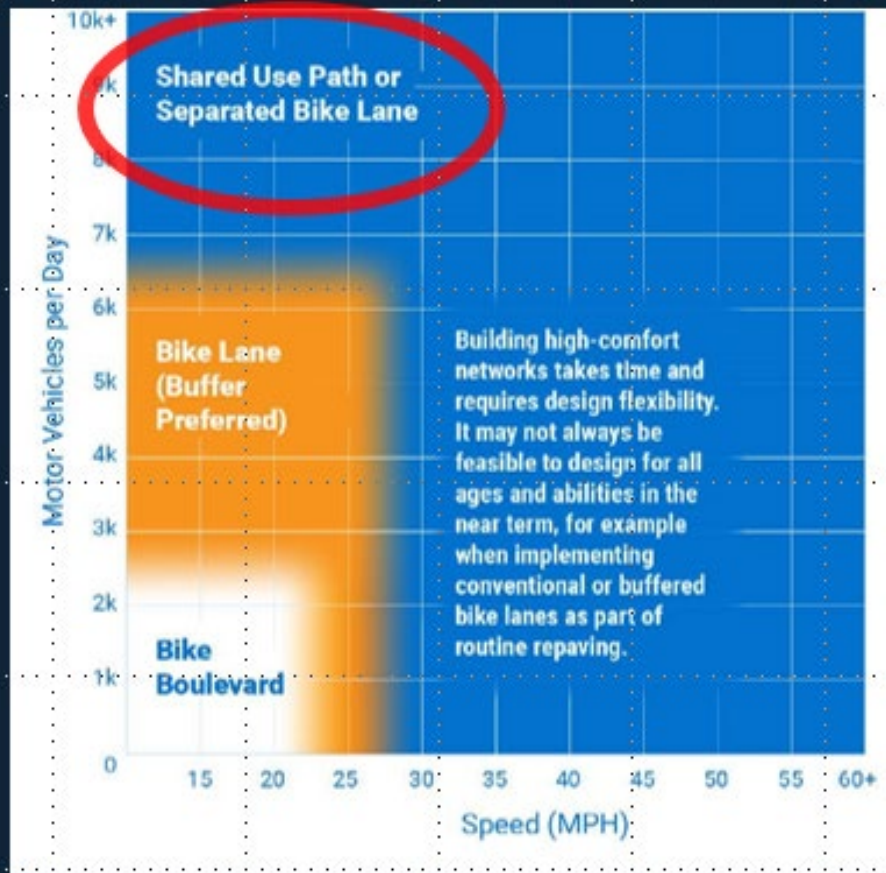


Corridor Length -- 9 Miles

AREAS OF CONCERN:



CORRIDOR IMPROVEMENTS: Bicycle Accommodations



Source: MassDOT Municipal Resource Guide for Bikeability



Shared Use Path



Separated Bike Lane

CORRIDOR IMPROVEMENTS: Roadway / Intersections



Intersection Improvements

- Turn Lanes
- Reconfiguration of Problem Geometry
- Signalization
- Pedestrian and Bicyclist Accommodations



CORRIDOR IMPROVEMENTS: Pedestrian Accommodations



Pedestrian and Bicyclist Improvements

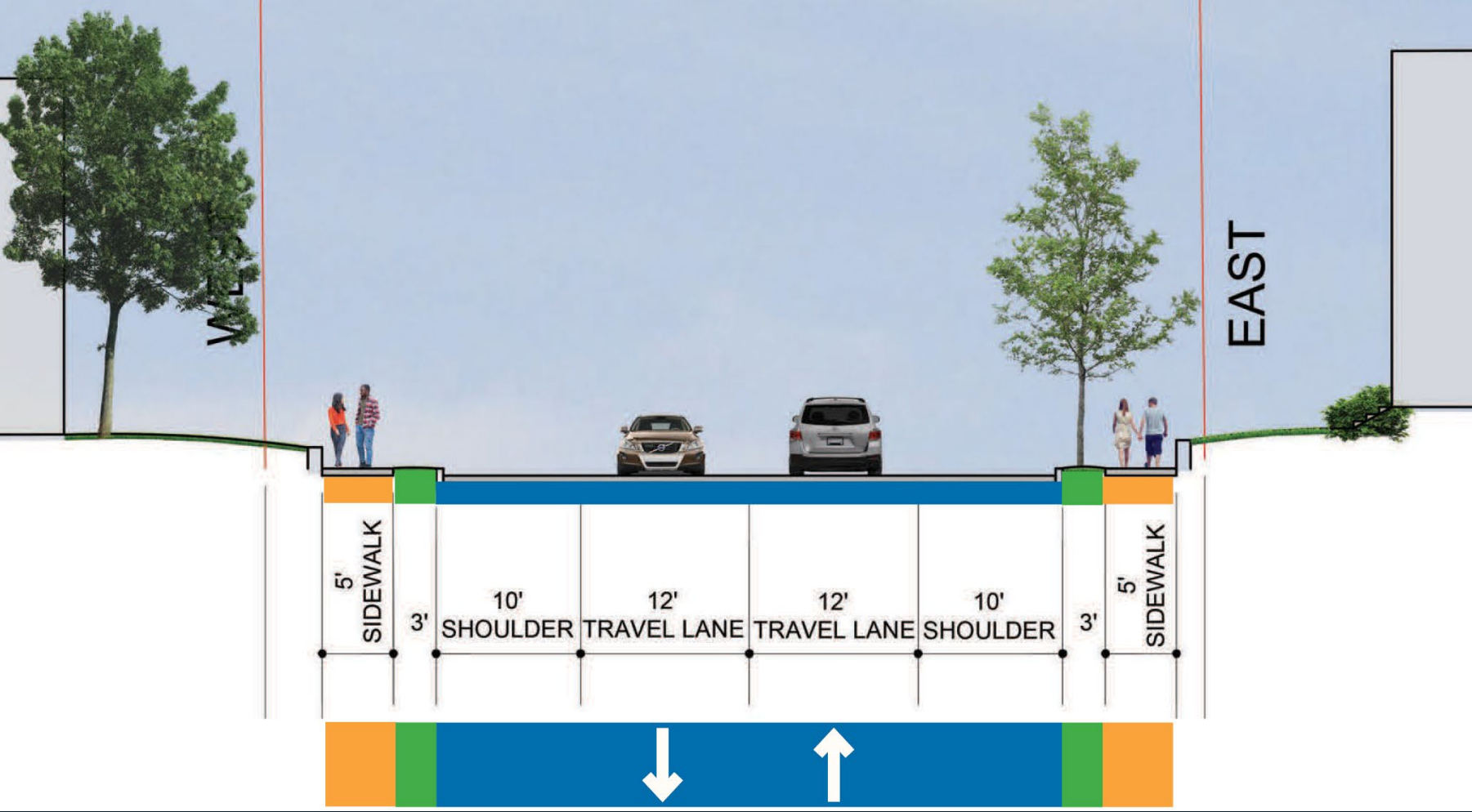
- Sidewalks / Shared Use Paths
- Safe Crossings



DESIGN CONCEPTS: Segment 1: Brush Hill Rd. to Robbins St.

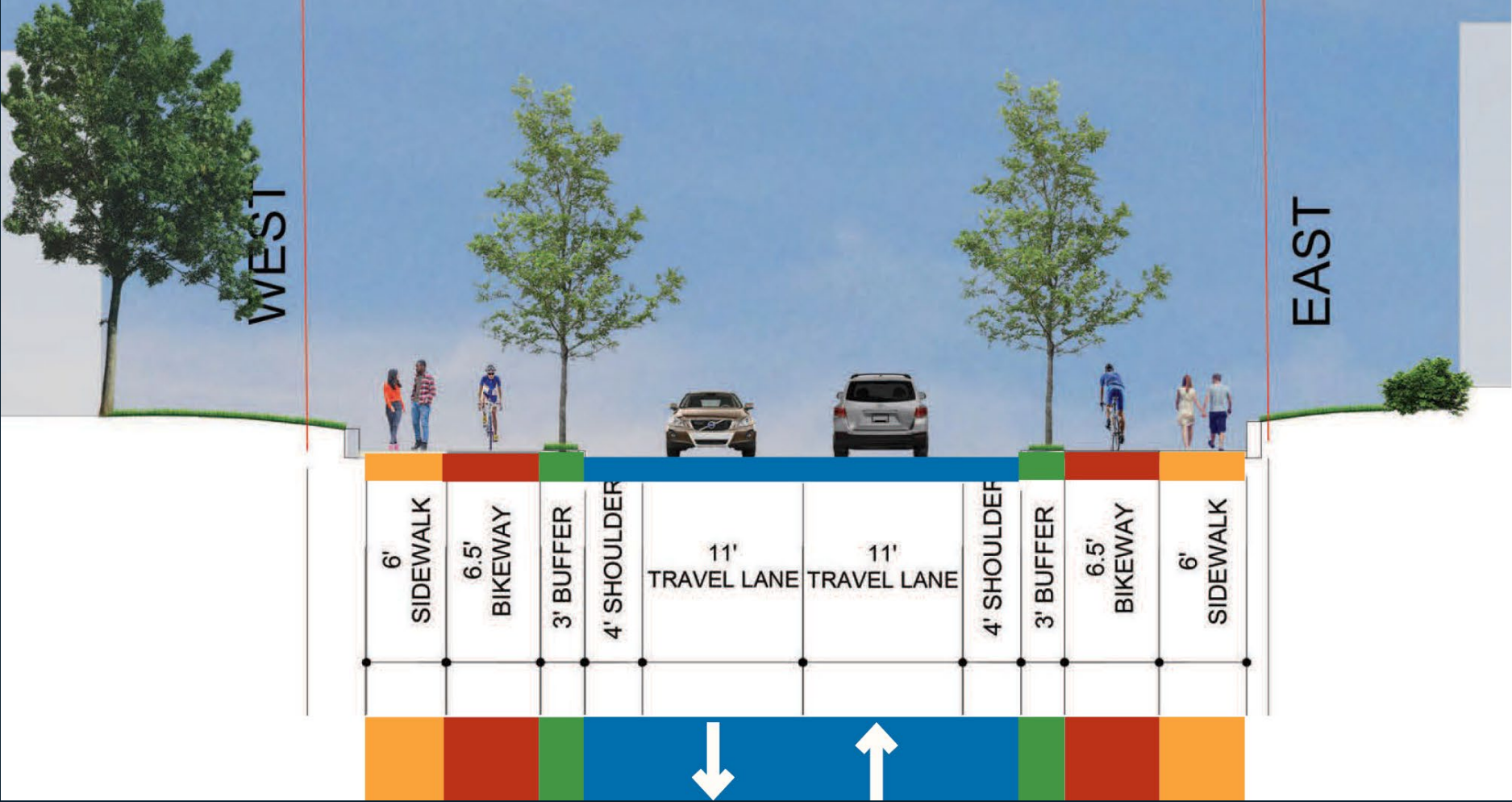


DESIGN CONCEPTS: Segment 1: Brush Hill Rd to Robbins St.



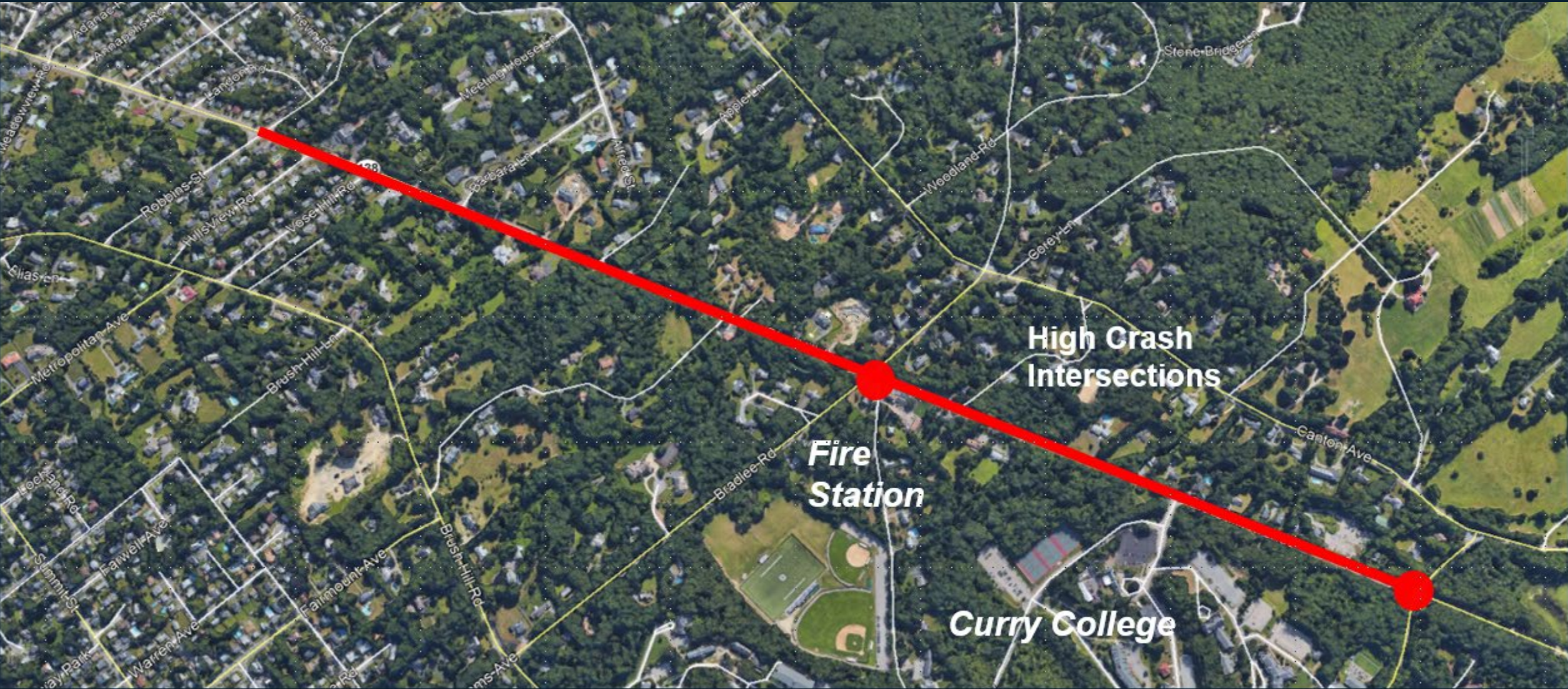
Existing Conditions

DESIGN CONCEPTS: Segment 1: Brush Hill Rd to Robbins St.

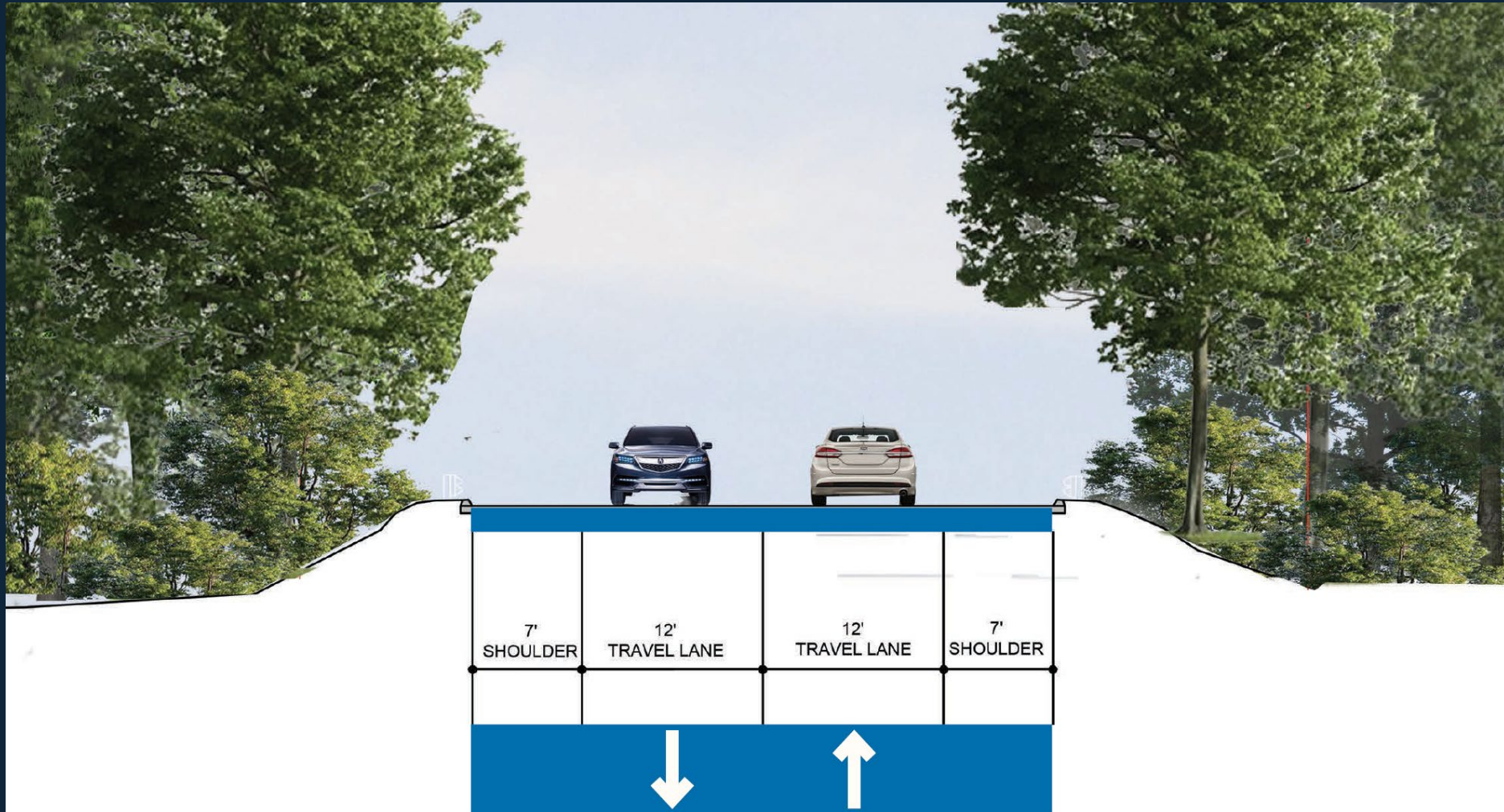


Design Concept

DESIGN CONCEPTS: Segment 2: Robbins St. to Milton St.



DESIGN CONCEPTS: Segment 2: Robbins St. to Milton St

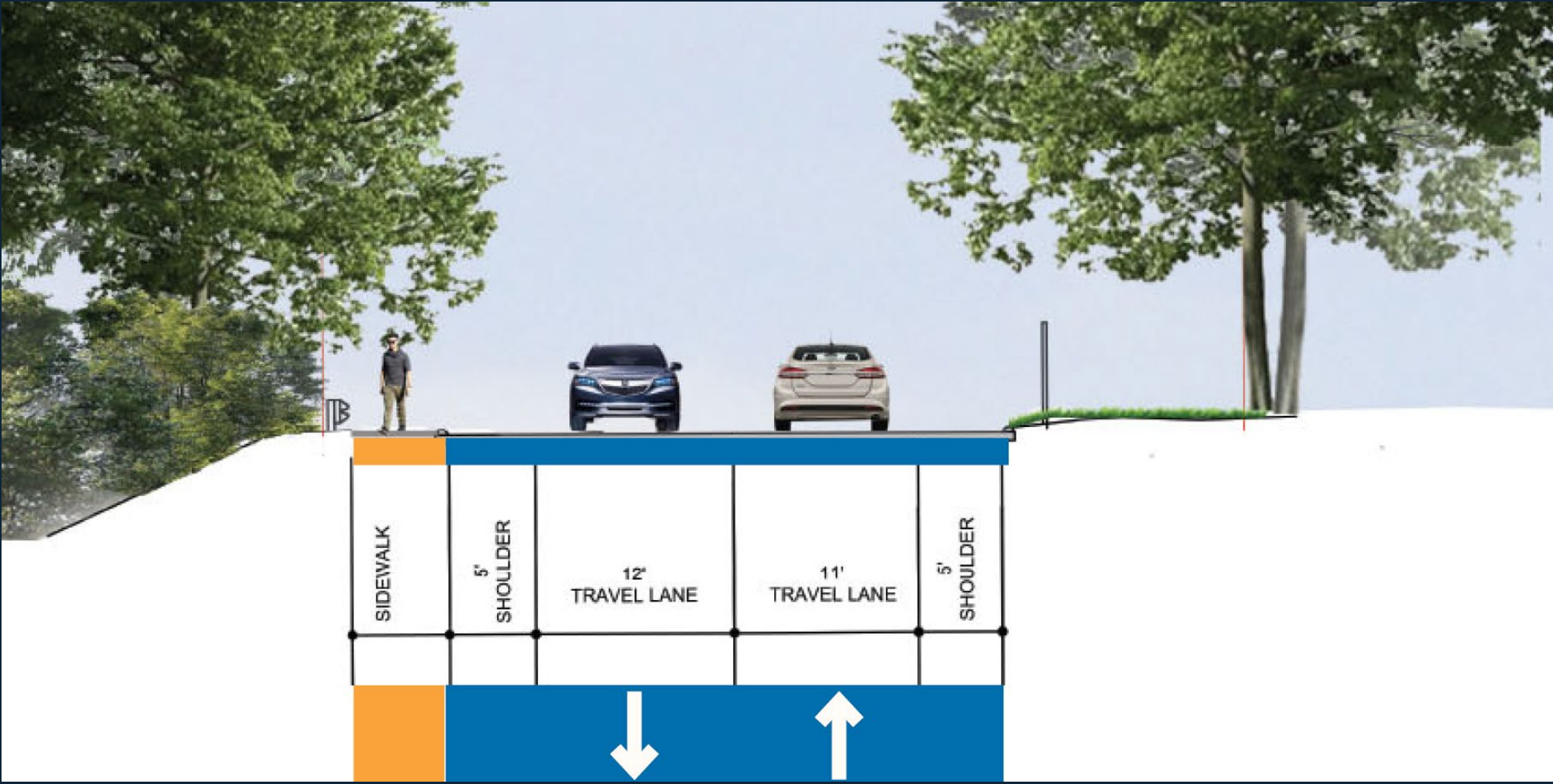


Existing Conditions

DESIGN CONCEPTS: Segment 3: Milton St. to Royall St.

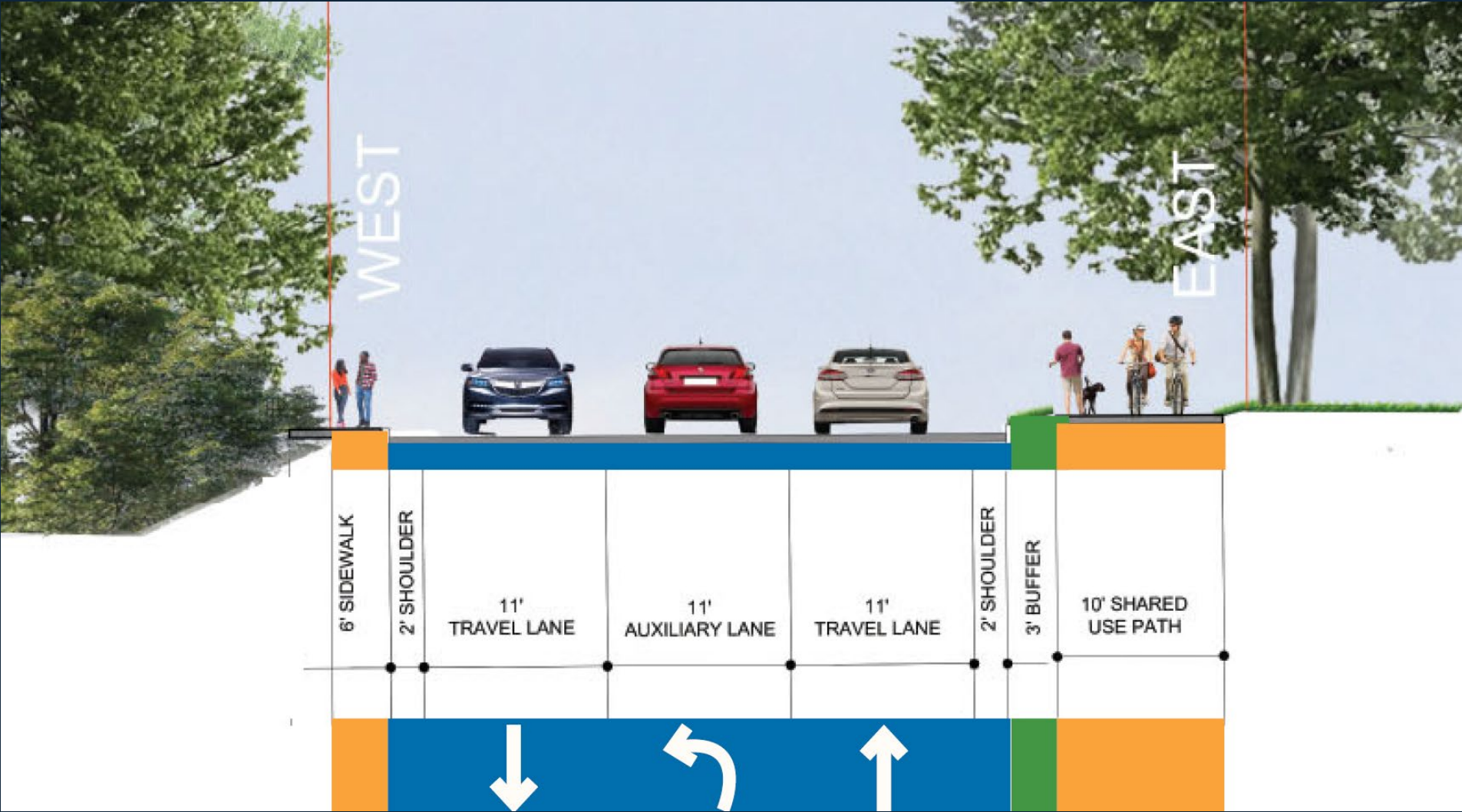


DESIGN CONCEPTS: Segment 3: Milton St. to Royall St.



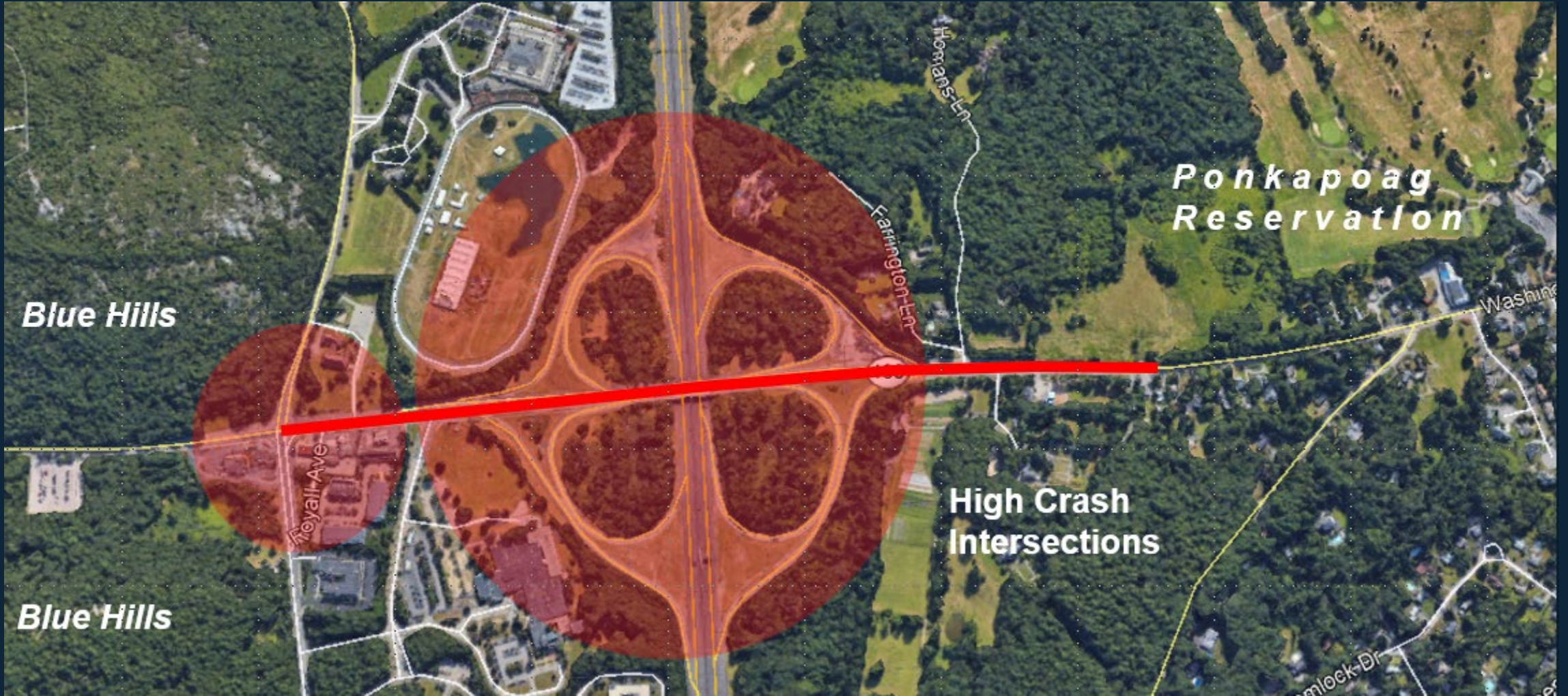
Existing Conditions

DESIGN CONCEPTS: Segment 3: Milton St. to Royall St.

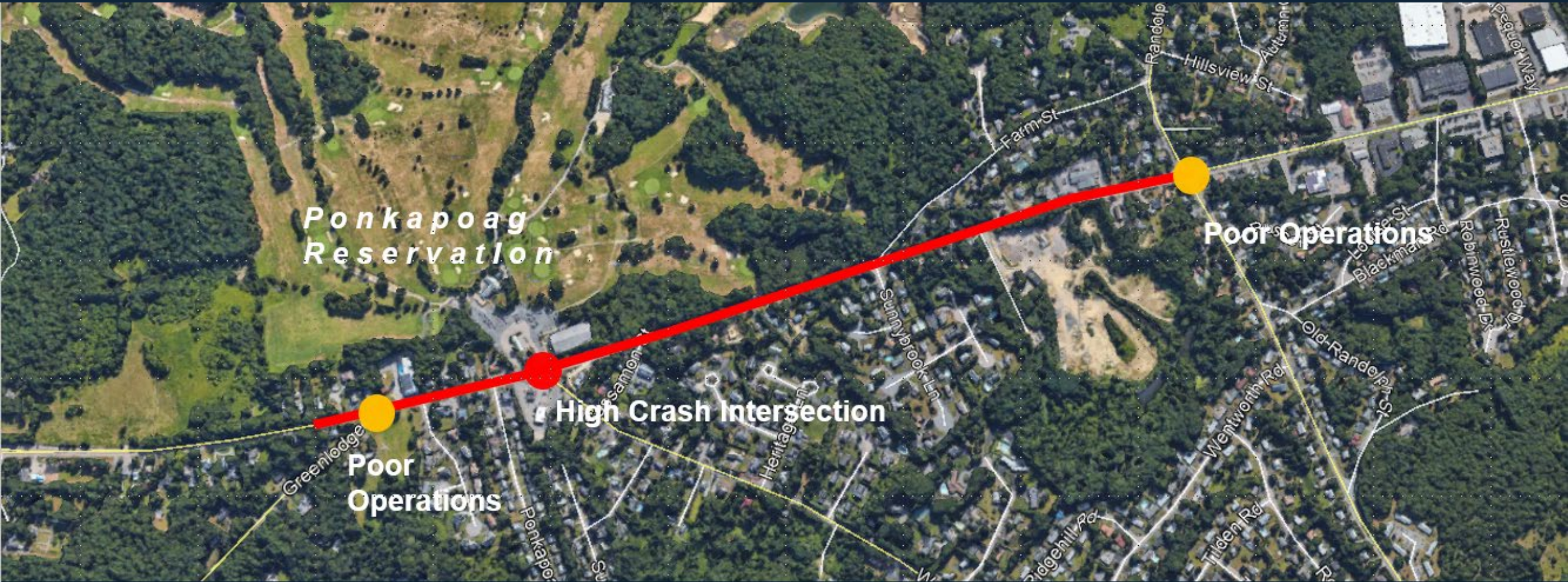


Design Concept

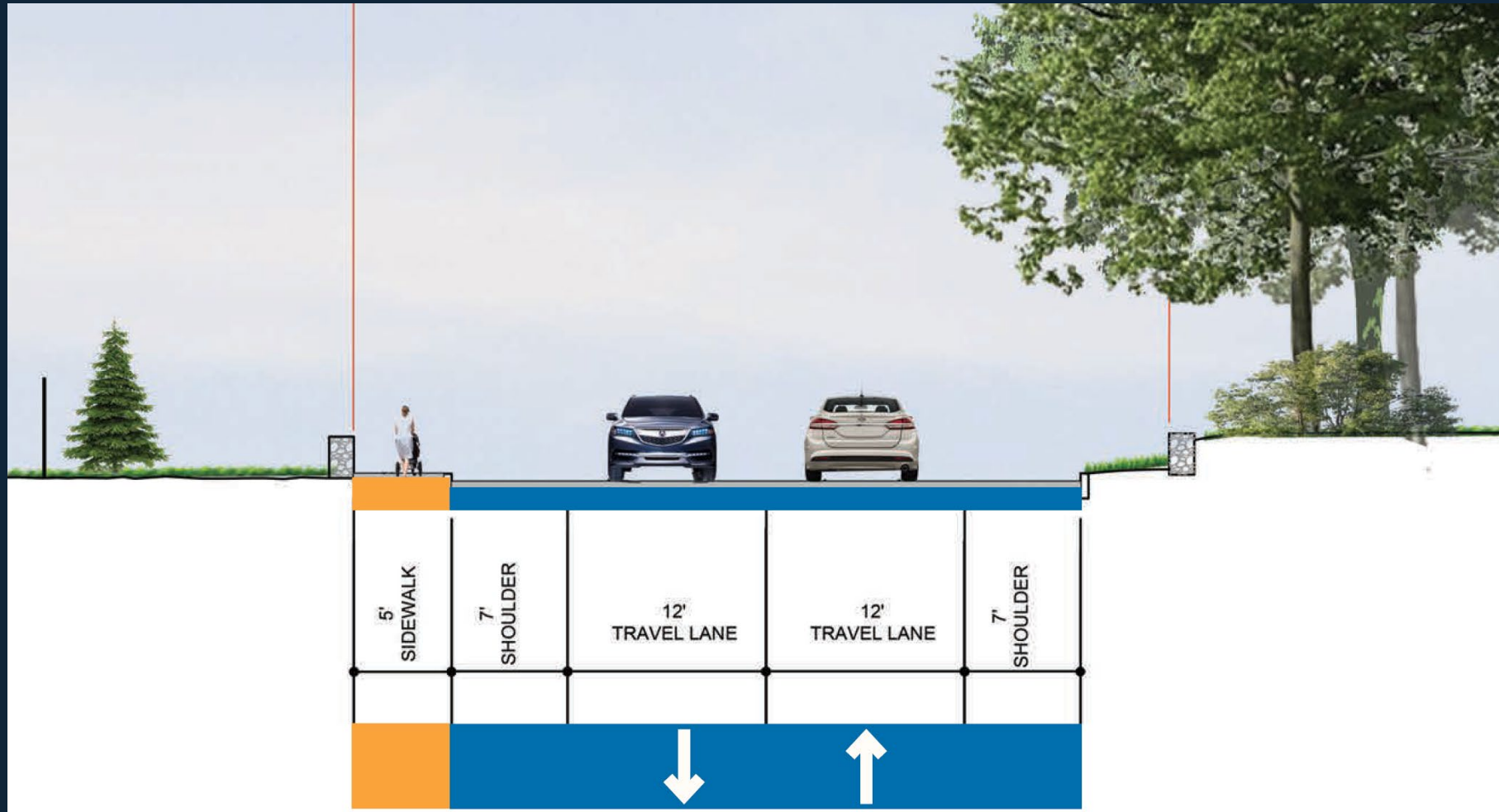
DESIGN CONCEPTS: Segment 4: Interchange Area



DESIGN CONCEPTS: Segment 5: Interchange to Randolph

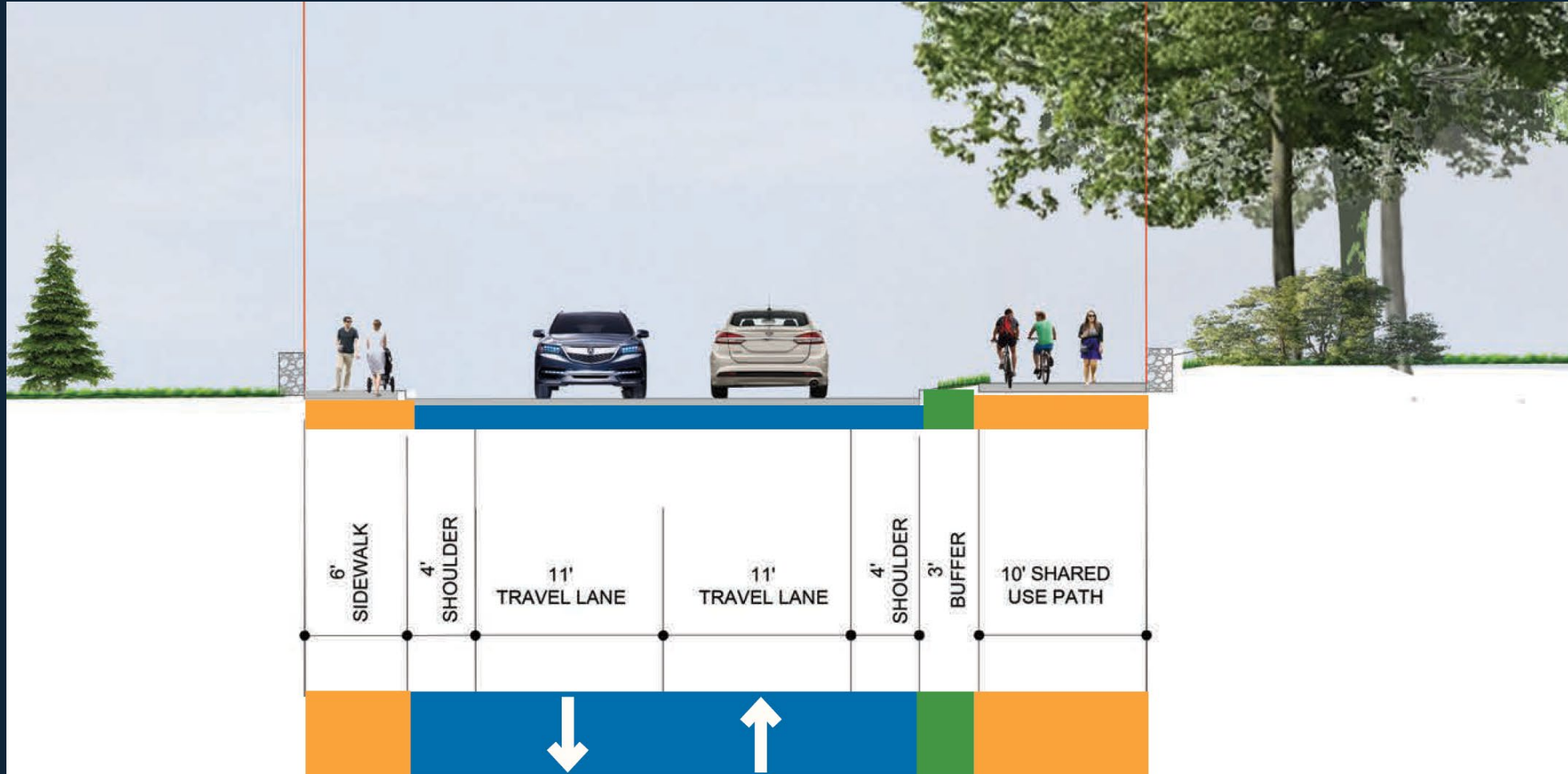


DESIGN CONCEPTS: Segment 5: Interchange to Randolph St.



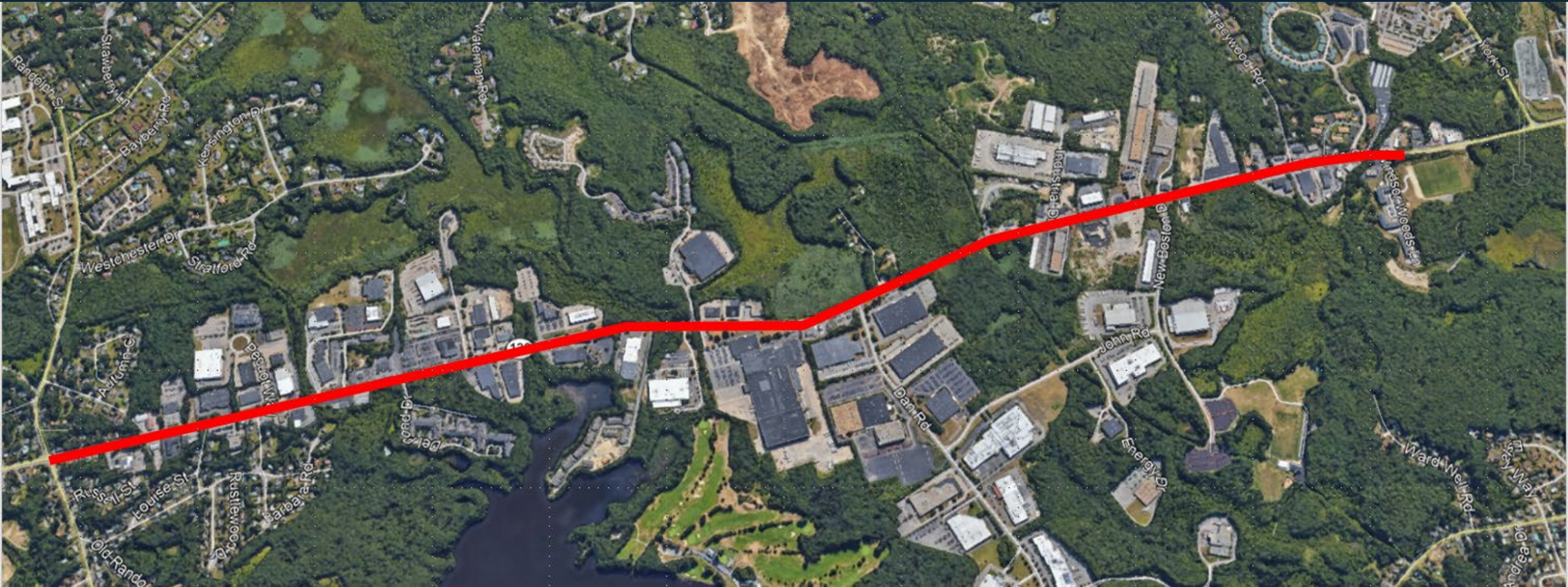
Existing Conditions

DESIGN CONCEPTS: Segment 5: Interchange to Randolph St

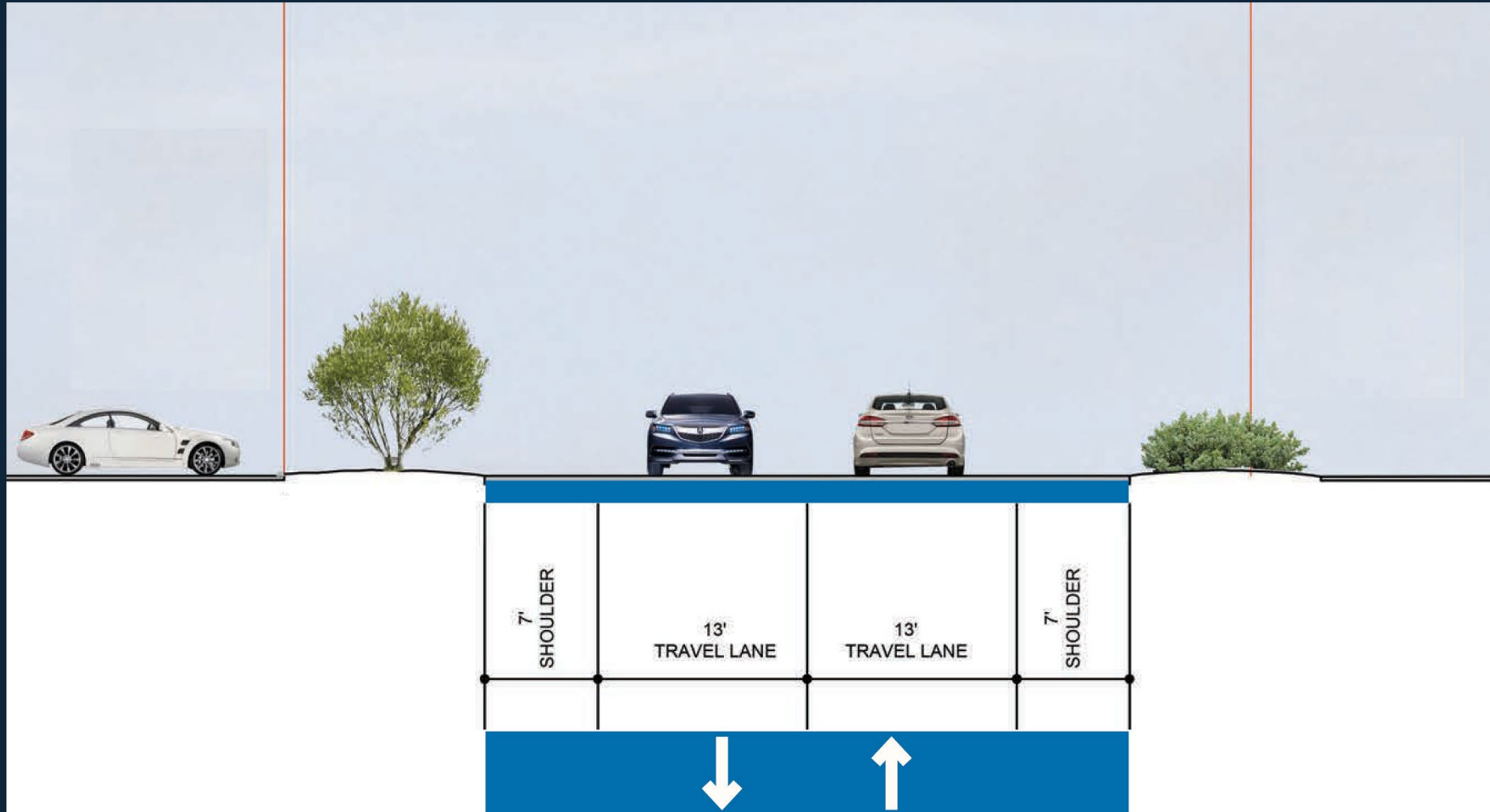


Design Concept

DESIGN CONCEPTS: Segment 6: Randolph St. to Town Line

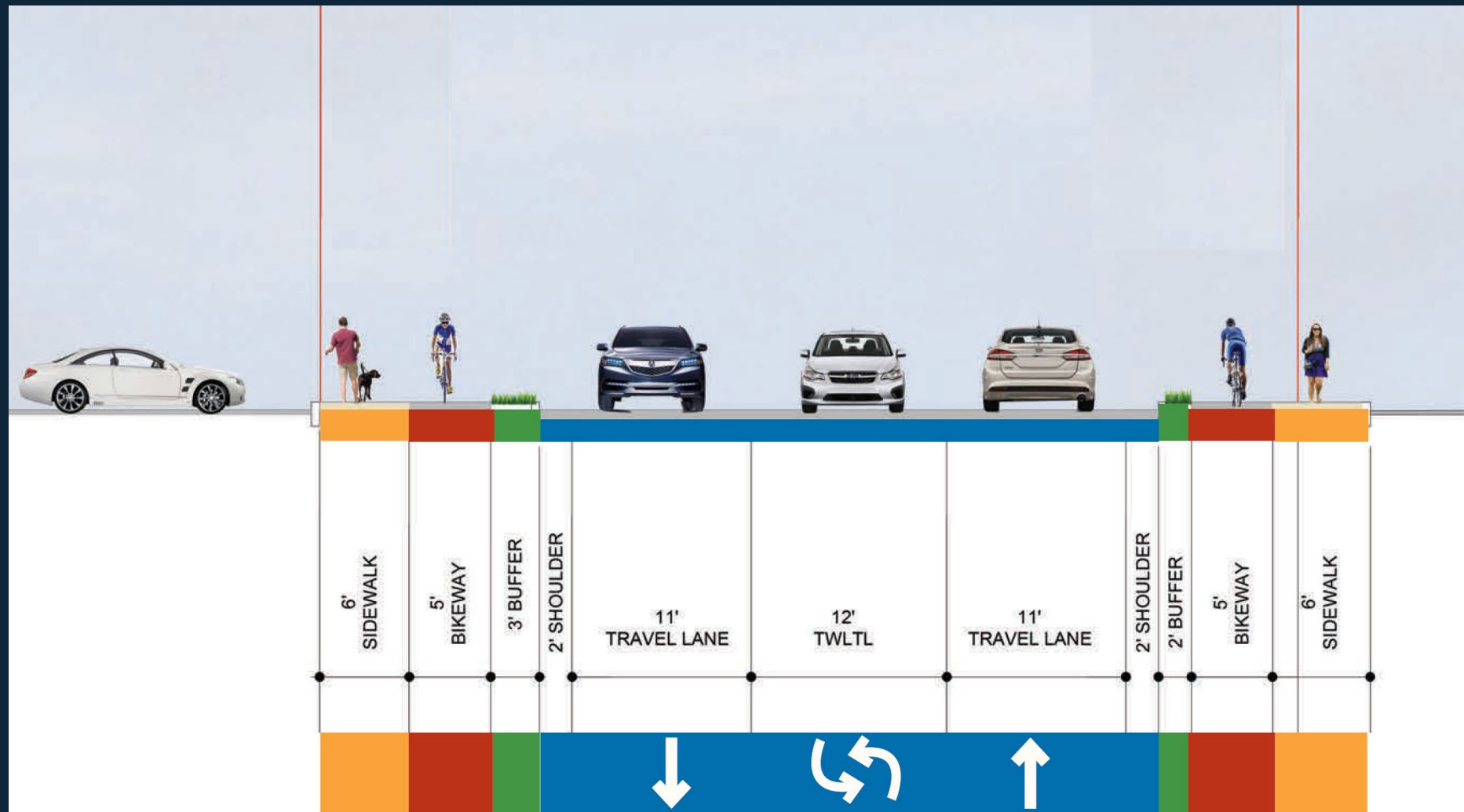


DESIGN CONCEPTS: Segment 6: Randolph St. to Town Line



Existing Conditions

DESIGN CONCEPTS: Segment 6: Randolph St. to Town Line



Design Concept

OPEN HOUSE:

1. Visit Stations
2. Review Design Concepts
3. Provide Comments
 - Comment Sheets/Online Survey
 - Project Email Address



Michael.Trepanier@dot.state.ma.us

THANK YOU!

ROUTE 138 PROJECT AREA KEY MAP



Segment 1: Milton -- Brush Hill Road to Robbins Street

Segment 2: Milton -- Robbins Street to Milton Street

Segment 3: Milton / Canton: Milton Street to Royall Street

Segment 4: Canton -- Interchange Area

Segment 5: Canton -- Interchange Area to Randolph Street

Segment 6: Canton: -- Randolph Street to Town Line



Scan for link to survey

or go to: www.tinyurl.com/cantonmilton138

Project email: michael.trepanier@dot.state.ma.us



Route 138 Reconstruction - Milton/Canton

Conceptual Complete Street Design Concepts

Public Information Meeting - October 22, 2019