

# Public Information/Input Meeting

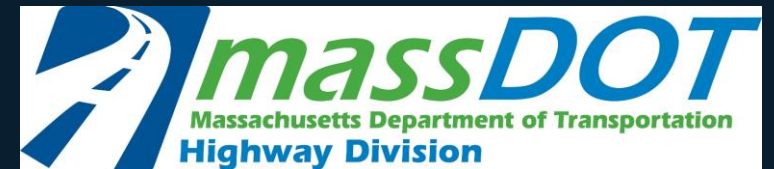
## Bridge Replacement & Interchange Improvements at Rt 27 (North Main St) over Rt 9 (Worcester St)

NATICK, MA | PROJECT FILE NO. 605313

JUNE 10, 2021



<https://tinyurl.com/9-27-video>



# MEETING AGENDA

1. Project Background
2. Conceptual Plans
3. Multi-Modal Considerations
4. Q&A
5. Next Steps

<https://tinyurl.com/9-27-video>





# PROJECT BACKGROUND – PROJECT LIMITS





# PROJECT BACKGROUND – PROJECT NEEDS & GOALS

1. Bridge Replacement
2. Increase Safety
3. Improve Mobility
4. Improve Congestion





# PROJECT BACKGROUND – PROJECT NEEDS & GOALS

1. Bridge Replacement
2. Increase Safety
3. Improve Mobility
4. Improve Congestion





# PROJECT BACKGROUND – PROJECT NEEDS & GOALS

1. Bridge Replacement
2. Increase Safety
3. Improve Mobility
4. Improve Congestion





# PROJECT BACKGROUND – PROJECT NEEDS & GOALS

1. Bridge Replacement
2. Increase Safety
3. Improve Mobility
4. Improve Congestion





# PROJECT BACKGROUND – PREVIOUS 25% DESIGN





# PROJECT BACKGROUND – WHAT WE HEARD





# PROJECT BACKGROUND – WHAT WE HEARD

---

## Public Feedback at 25% Design Public Hearing:

### 1. Safety

- Pedestrian Facilities
- Bicycle Facilities

### 2. Traffic Congestion

- U-Turns
- Diverted Trips

### 3. Traffic Signals Could Worsen Traffic



# CONCEPTUAL PLANS – GUIDING PRINCIPLES

---

- Replace Bridge Structure
- Improve **SAFETY** for all Users
- Provide **MULTI-MODAL** Accommodations
- Enhance **MOBILITY** for all Users
- Improve Congestion
- Support Natick's Quality of Life
  - Context Sensitive



# CONCEPTUAL PLANS – OPTIONS CONSIDERED

Single Point  
Urban  
Interchange



Partial Cloverleaf  
Interchange Ver 1



Partial Cloverleaf  
Interchange Ver 2



'Teardrop'  
Interchange



Signalized 'Circle'

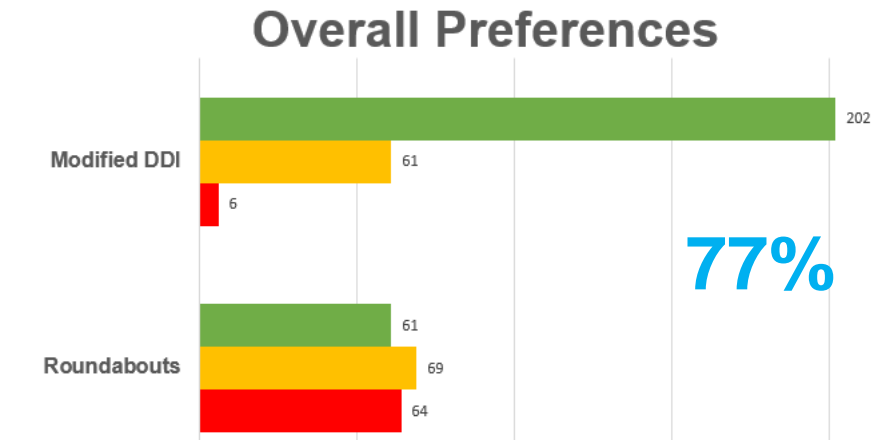
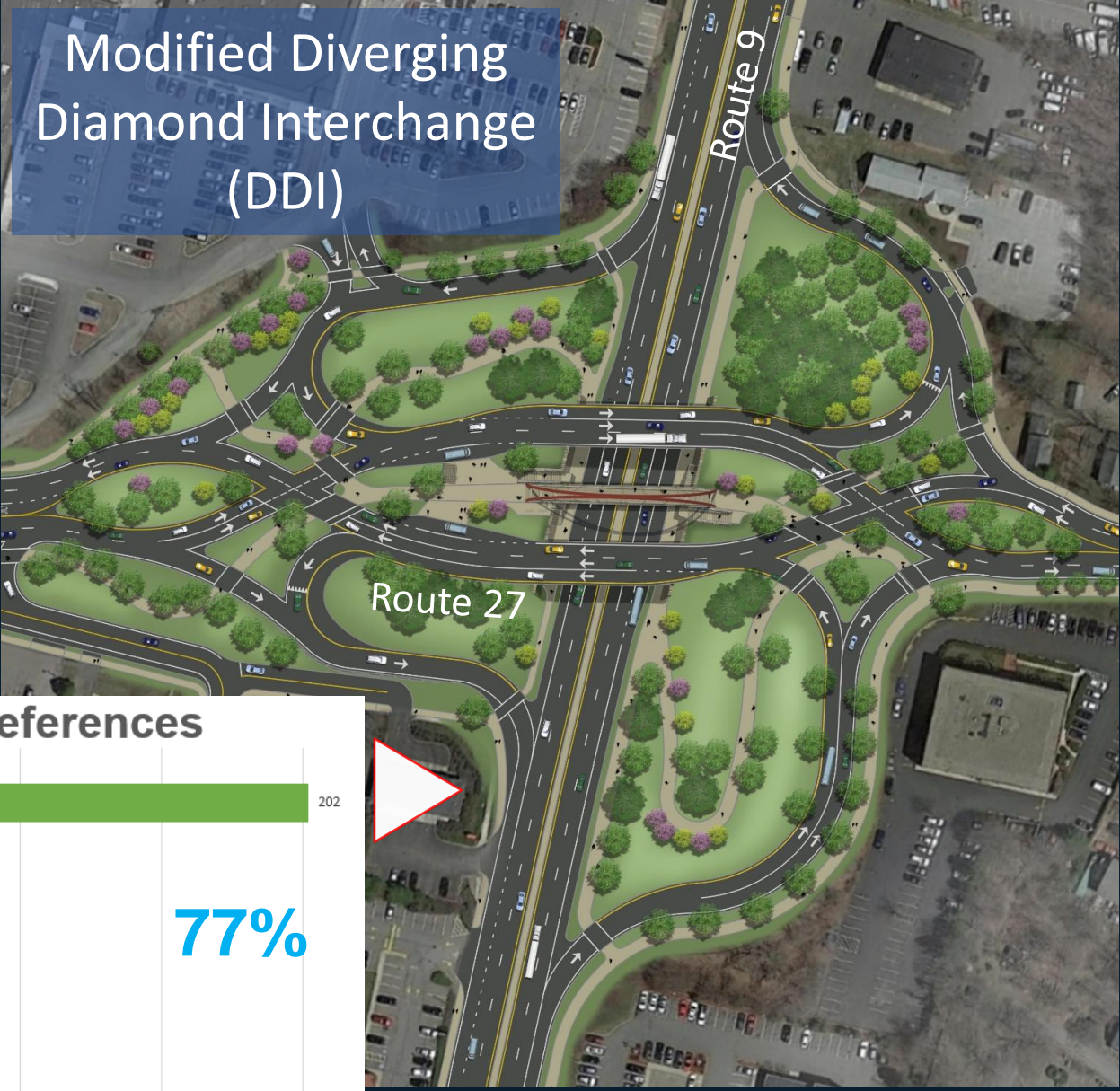
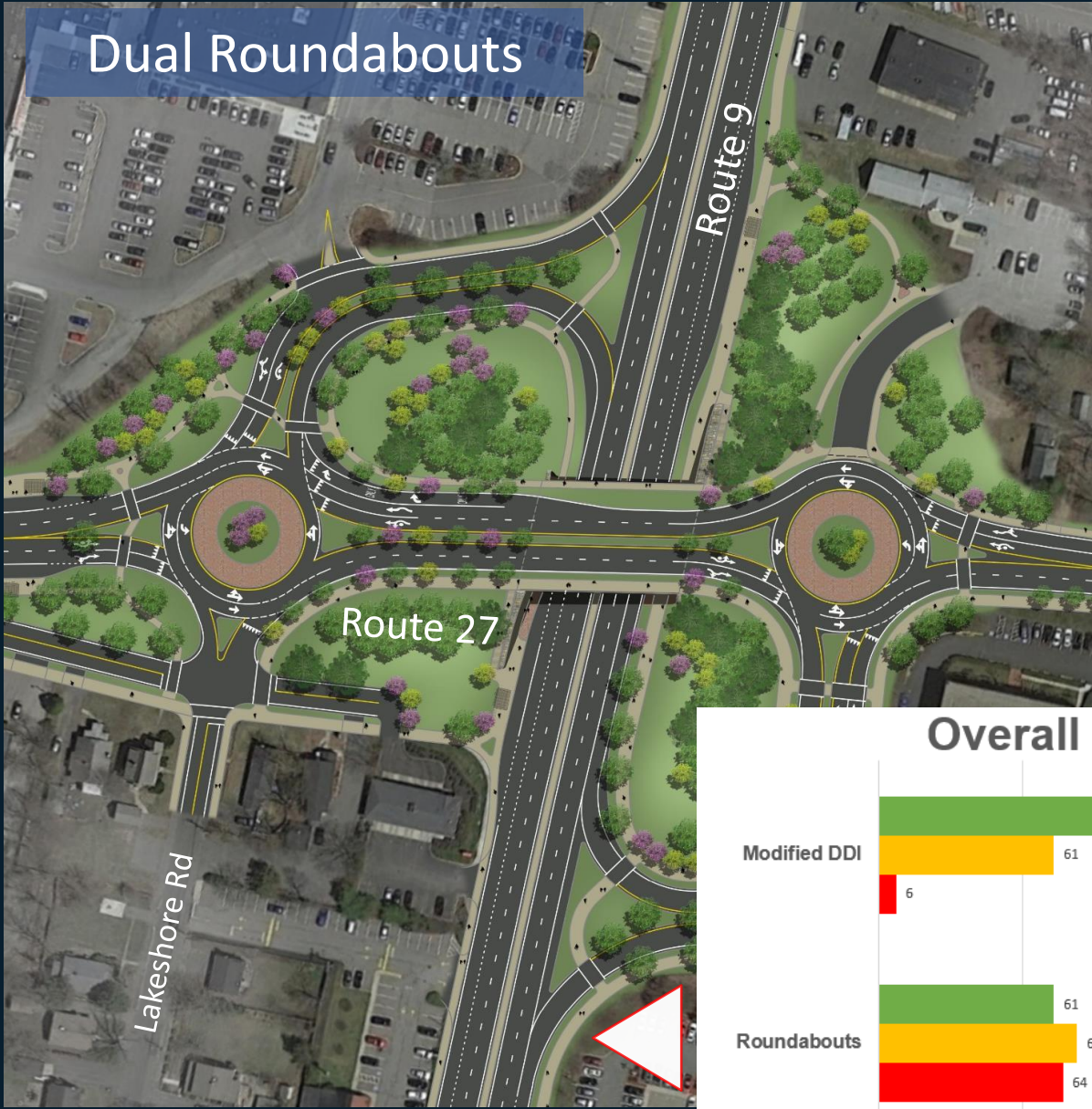


## Dismissed

- Excessive ROW impacts
- Unfavorable traffic operations
- Did not meet project needs and goals

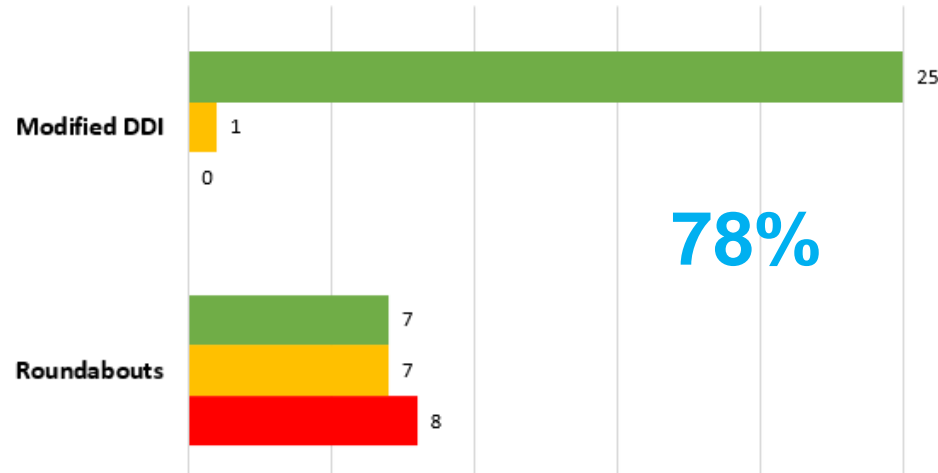


# CONCEPTUAL DESIGN – OPTIONS CONSIDERED

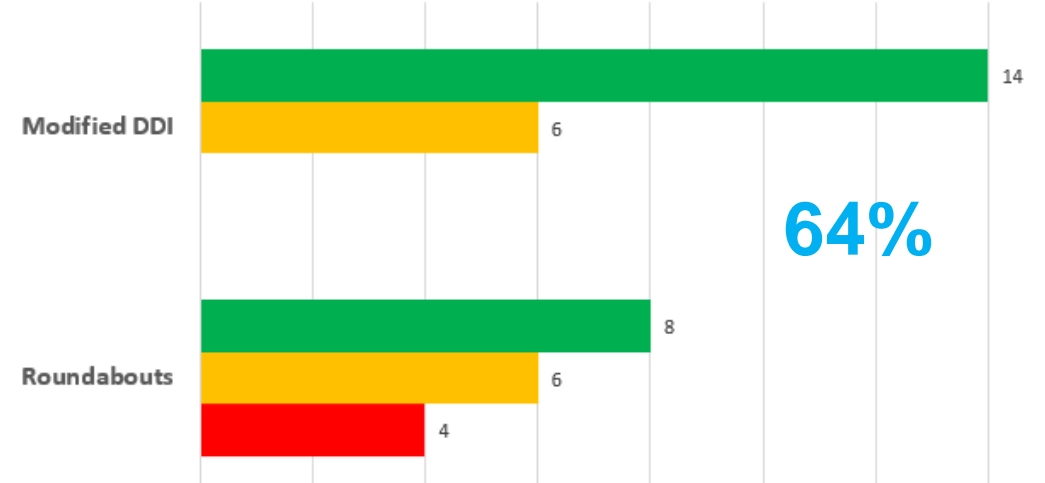


# CONCEPTUAL DESIGN – OPTIONS CONSIDERED

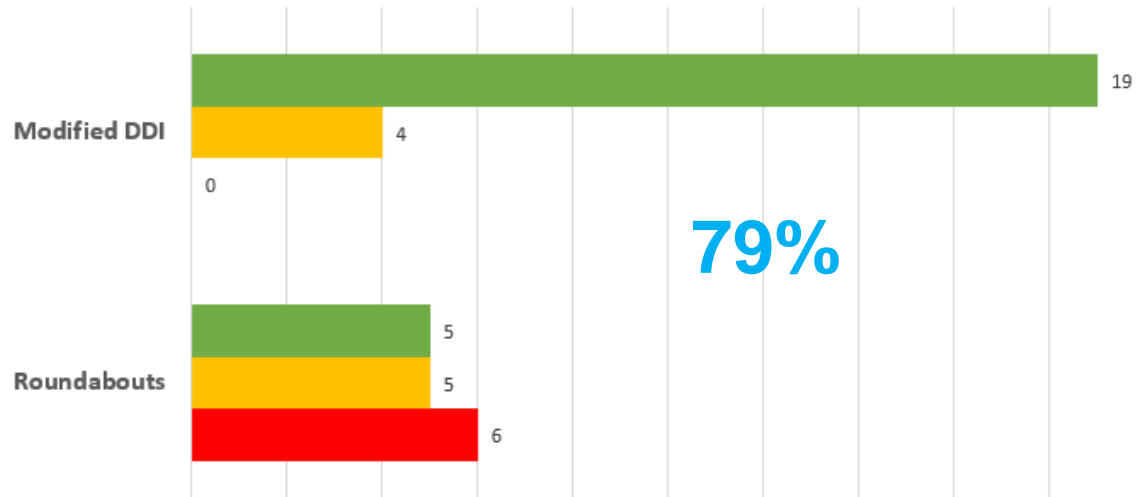
## Safety



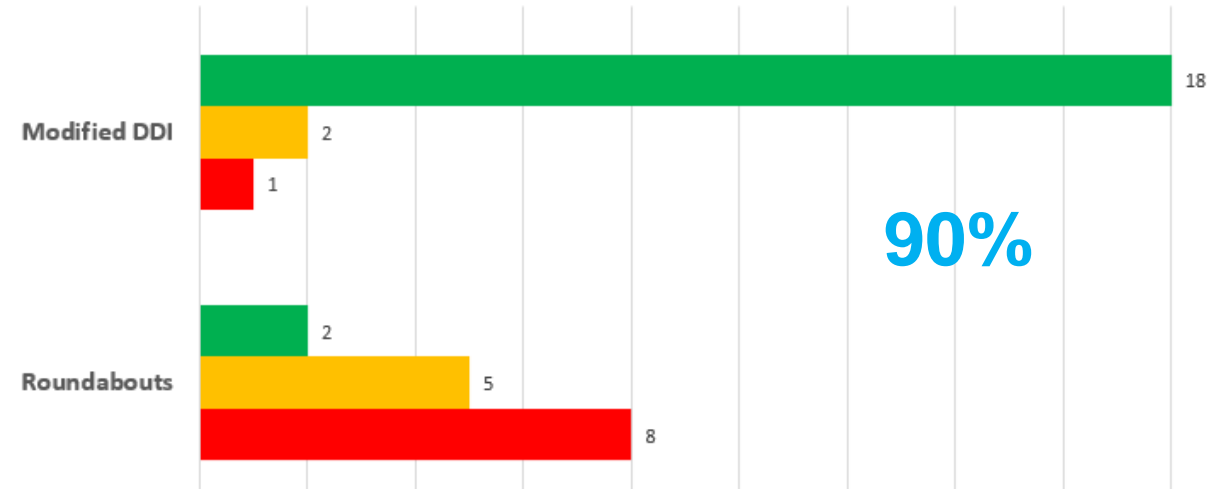
## Neighborhood Connectivity



## Pedestrian Accommodation



## Aesthetics

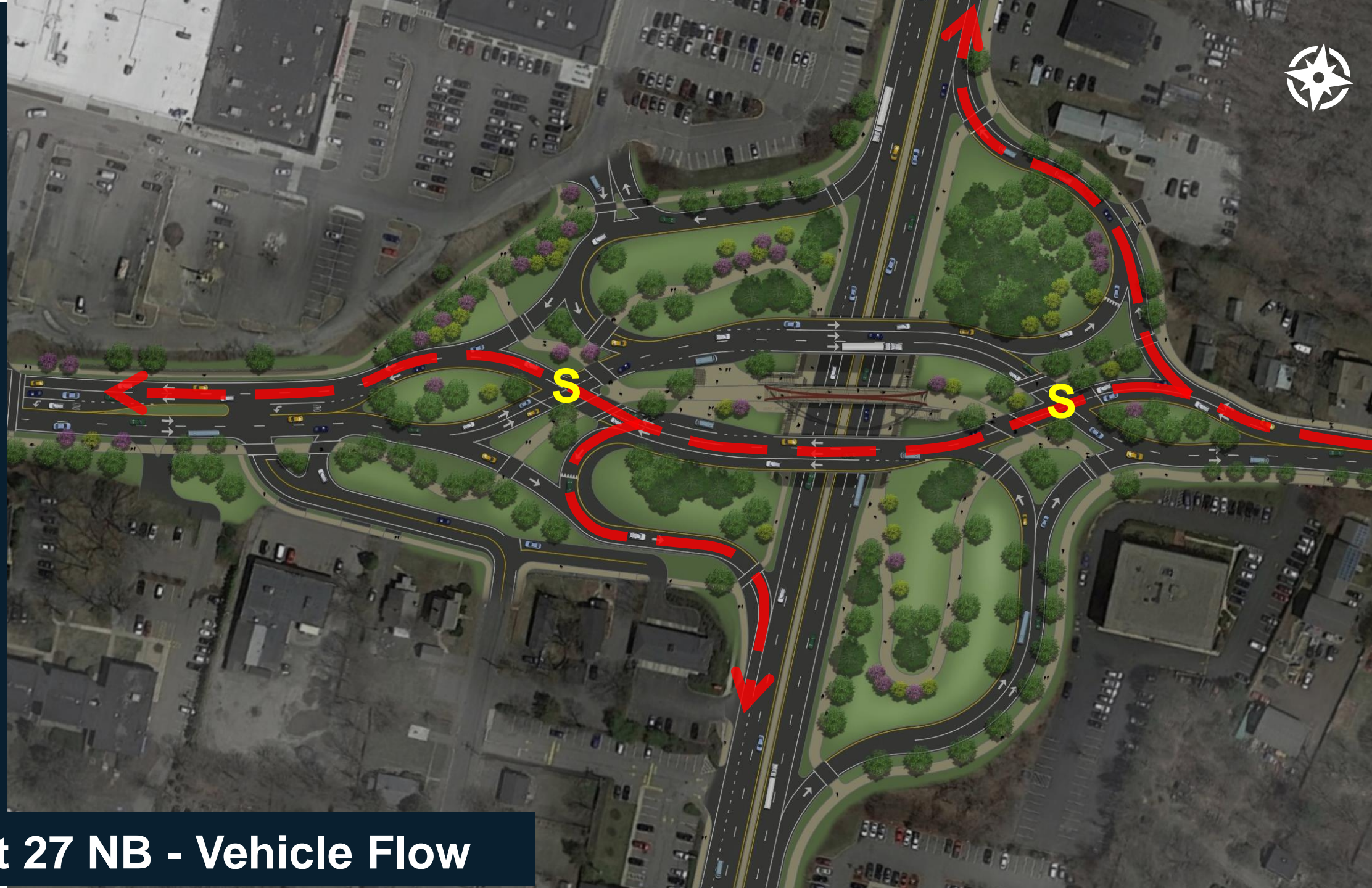






**Modified DDI**





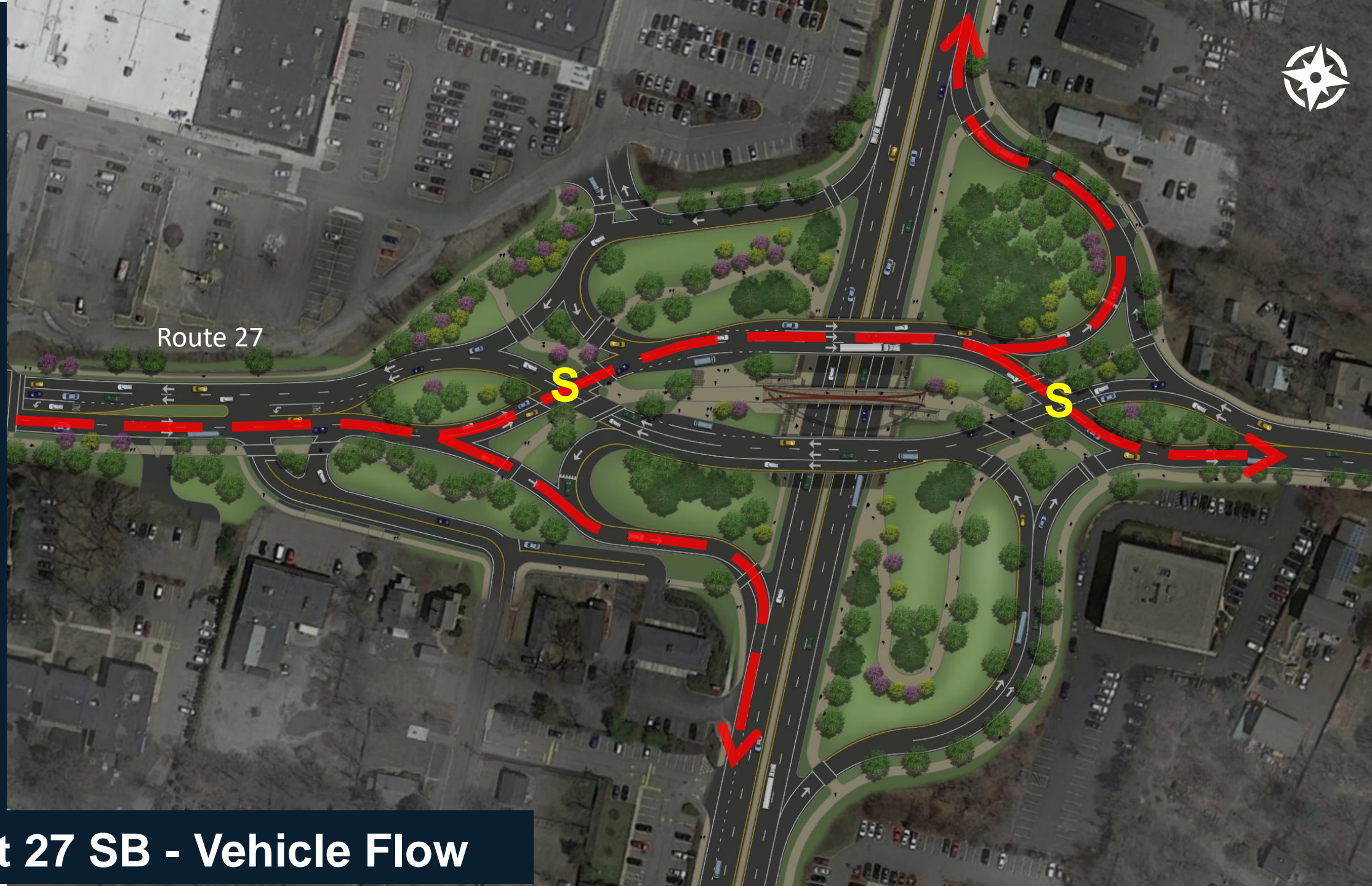
**Rt 27 NB - Vehicle Flow**





Route 27

Rt 27 SB - Vehicle Flow







Rt 9 – U-Turns

Rt 9 WB to Rt 9 EB =    
Rt 9 EB to Rt 9 WB =  



# TRADITIONAL DDI





# MODIFIED DDI





# TRADITIONAL DDI





# MODIFIED DDI





# TRADITIONAL DDI





# MODIFIED DDI





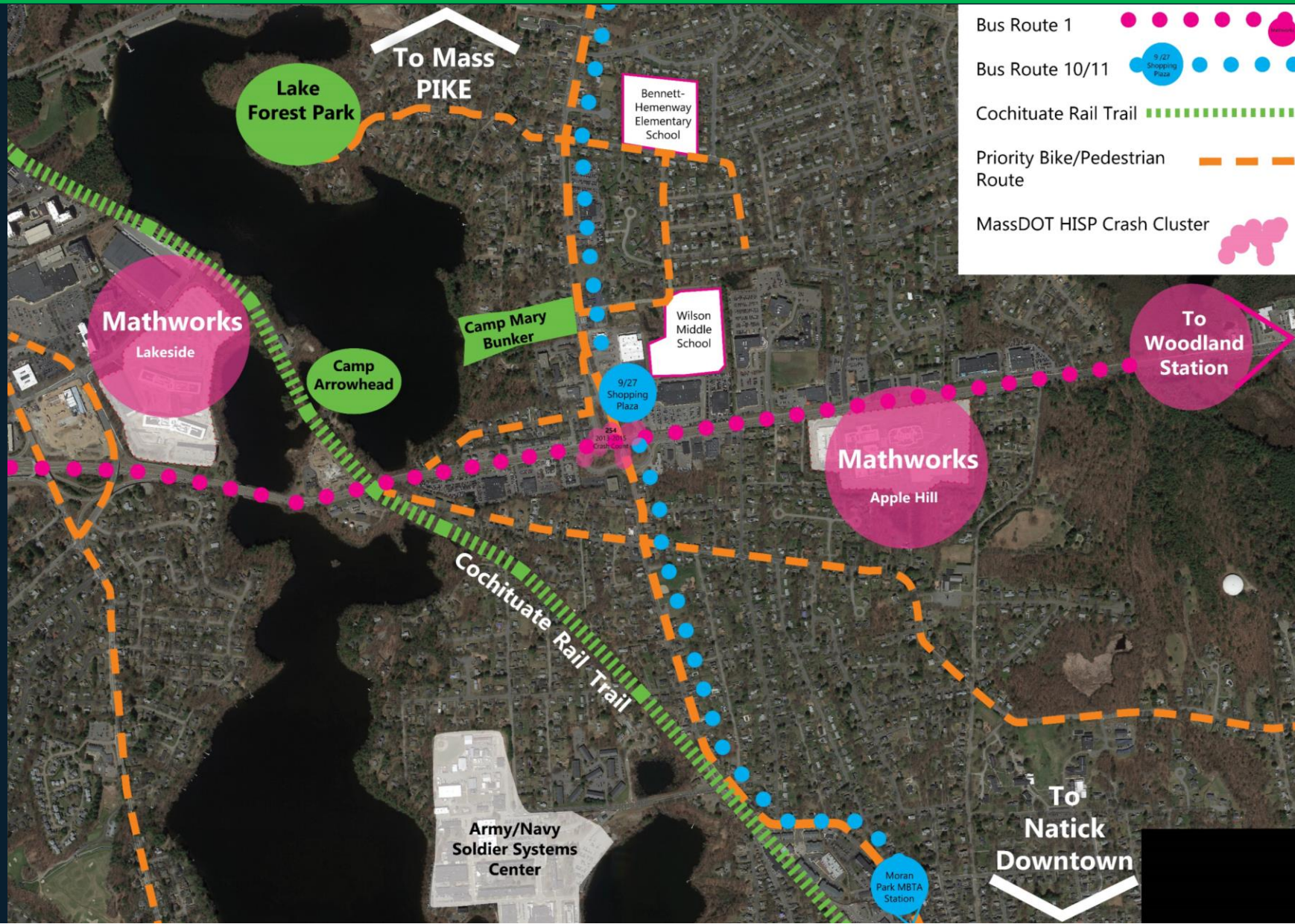
# CONCEPTUAL PLANS – MODIFIED DDI STRENGTHS

---

- Bridge Replacement Staging
- Elimination of Left Turn Movements
- High Comfort Separated Shared Use Path
- Signalized Bicycle/Pedestrian Crossings
- Simplified Signal Design
- Meaningful/Accessible Open Space
- Transit Interconnectivity



# MULTI-MODAL CONSIDERATIONS – REGIONAL CONTEXT

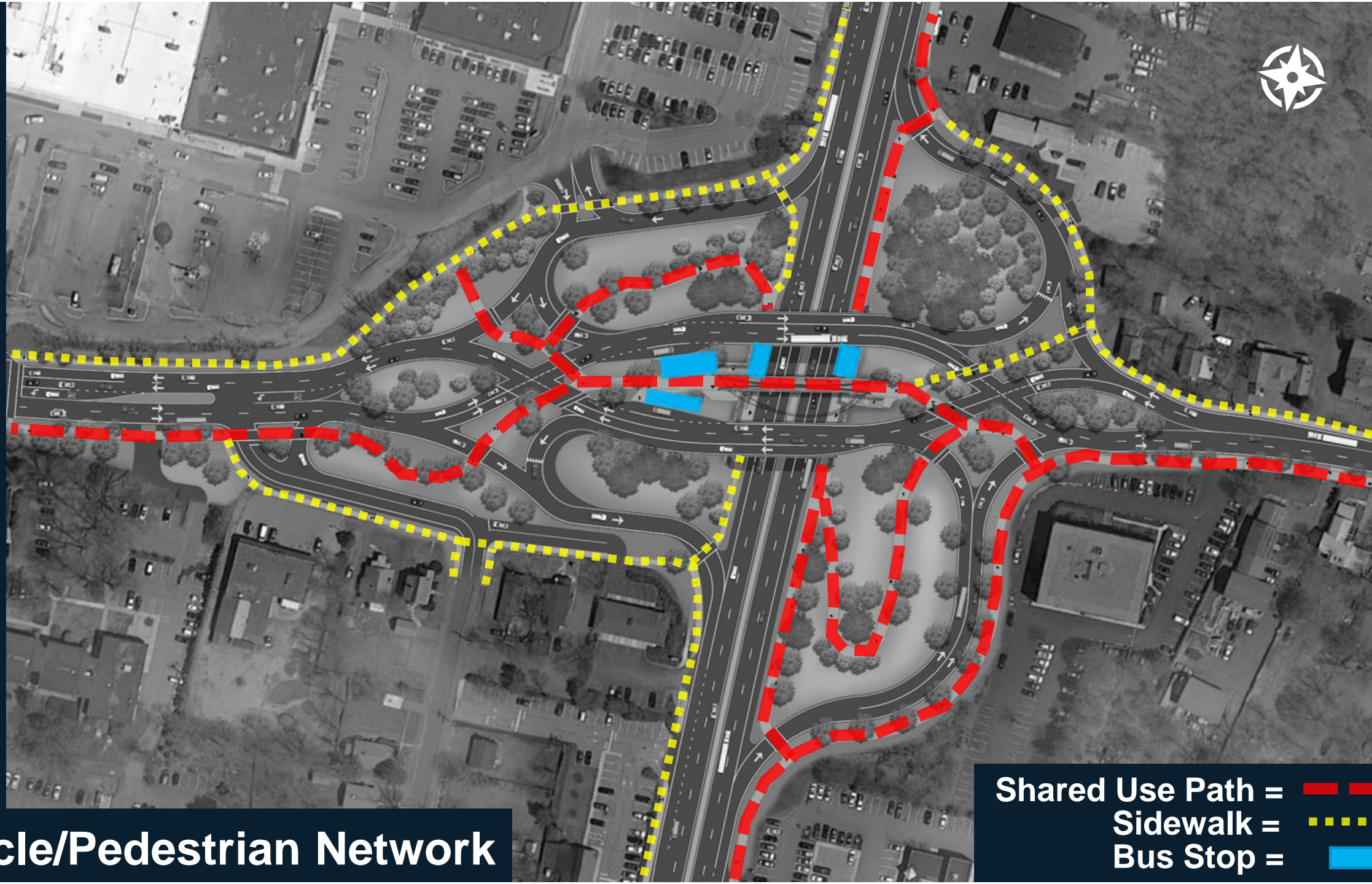






Shared Use Path =   
Sidewalk =   
Bus Stop = 

**Bicycle/Pedestrian Network**



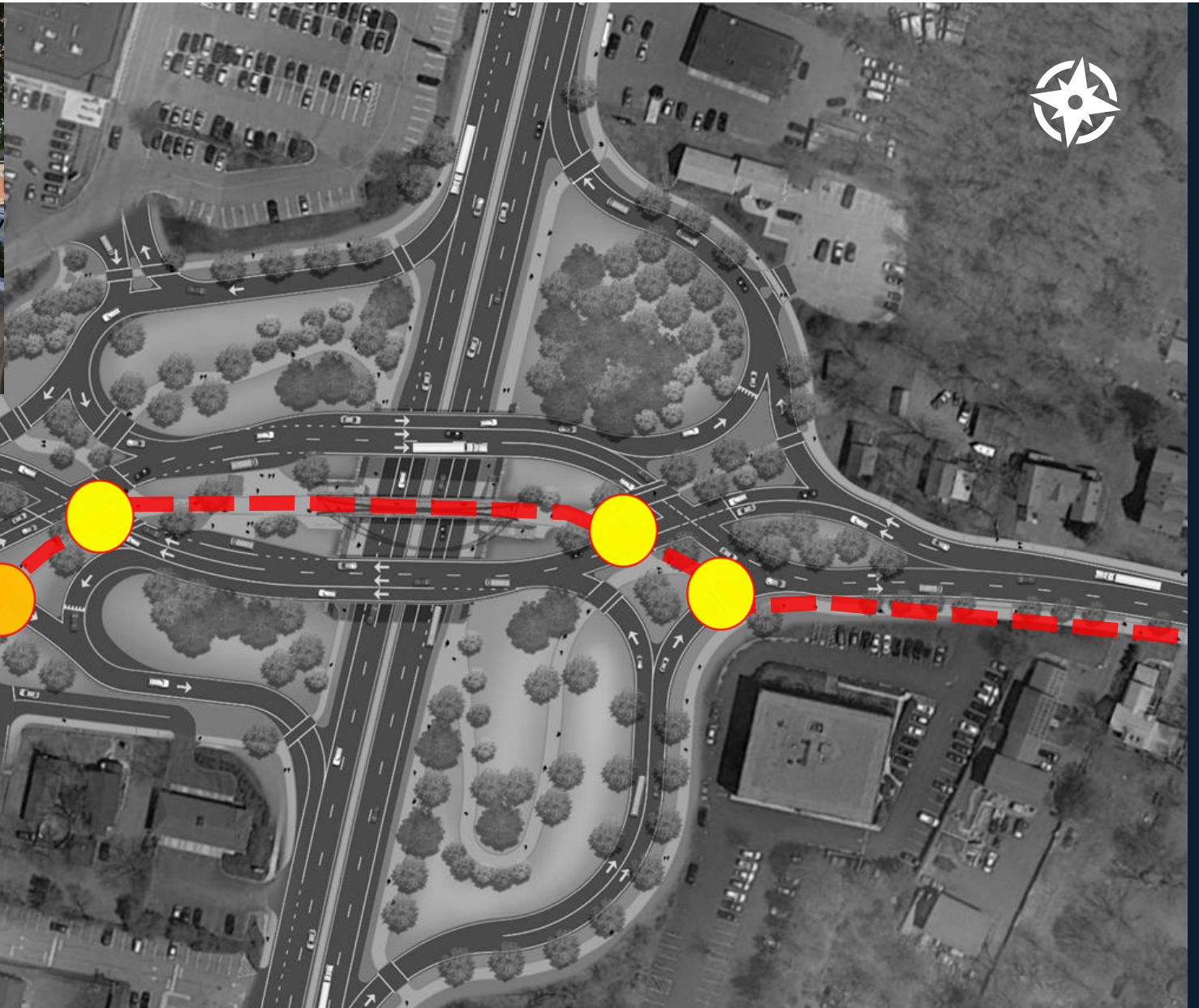




Shared Use Path = 

**Bicycle/Pedestrian Circulation**

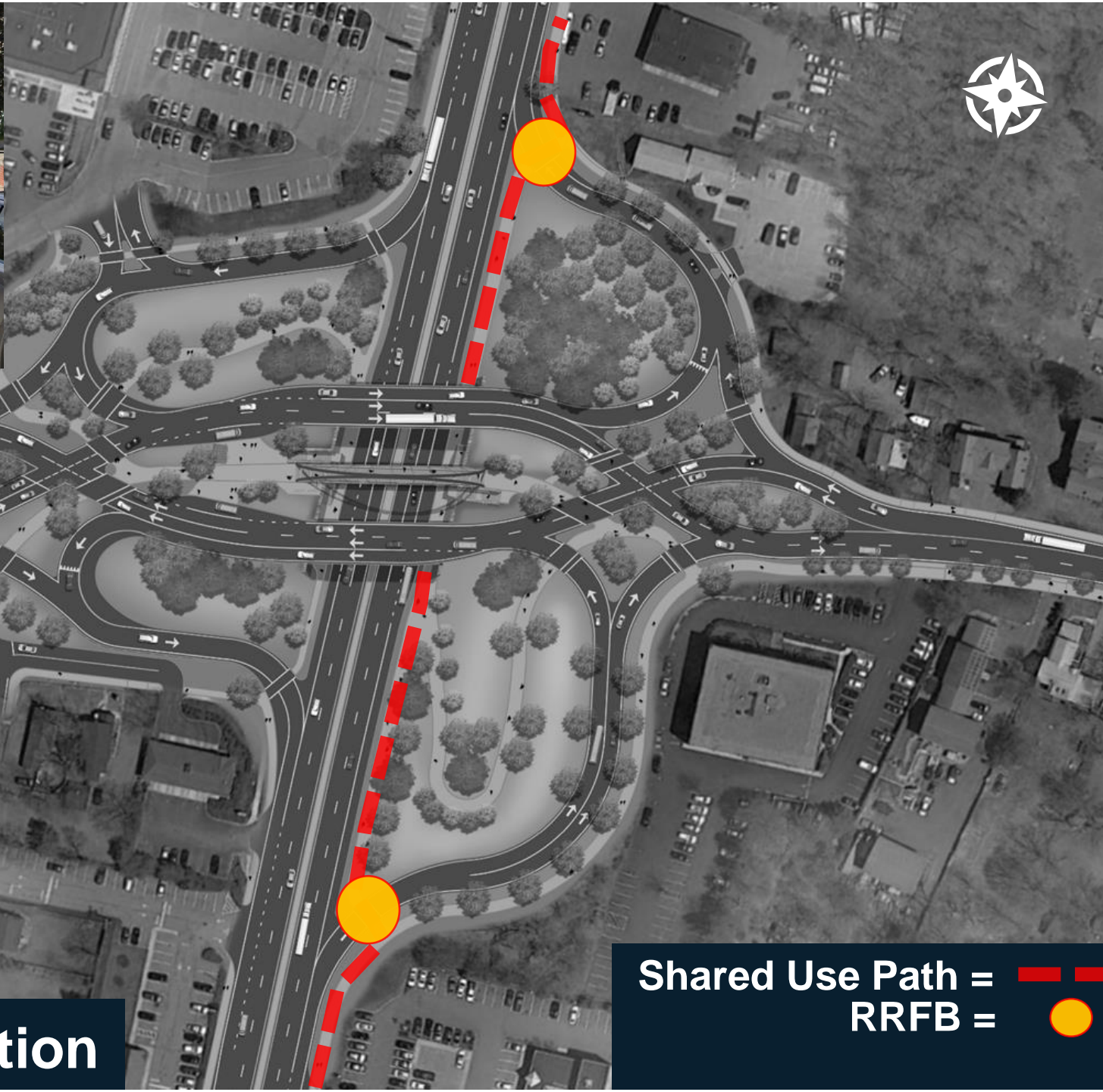




**Bicycle/Pedestrian Circulation**

Shared Use Path =   
Signalized =   
RRFB = 





Shared Use Path =   
RRFB = 

**Bicycle/Pedestrian Circulation**







# Q&A:

Bridge Replacement & Interchange Improvements at  
Rt 27 (North Main St) over Rt 9 (Worcester St)

NATICK, MA | PROJECT FILE NO. 605313

## We Want To Hear From You...

- Please raise your virtual hand.
- Project Email Address:

[Rt27Rt9Natick@dot.state.ma.us](mailto:Rt27Rt9Natick@dot.state.ma.us)

## THANK YOU!

