

Winsor Dam Intake Building Maintenance

The **Quabbin Intake Works Control House**, also referred to as the **Winsor Dam Intake Building**, is located at the west end of Winsor Dam and was built into the north slope of the dam's embankment along the edge of the reservoir. Construction was completed in 1940. It is the site where water from the reservoir passes through the Dam to supply the Chicopee Valley Aqueduct and maintain a steady flow of water to the Swift River. The structure is listed on the [Inventory of Historic and Archaeological Assets of the Commonwealth](#) (BLC.916).

Starting in May 2023, the Massachusetts Water Resources Authority (MWRA) will be overseeing maintenance on the Intake Building. This project is expected to be completed before the 2023-2024 winter season. The work includes cleaning and repointing of the exterior granite superstructure and the remediation of Asbestos Containing Materials (ACMs).

Winsor Dam will remain open to pedestrians and bicycles throughout the project's duration, although occasional closures may be needed at times. Temporary closures will be announced on <https://www.mass.gov/locations/quabbin-reservoir>.

The following are current and historic photographs of the Quabbin Intake Works Control House.

Figure 1: Quabbin Intake Works Control House, Winsor Dam Road, Belchertown, MA



COMMONWEALTH OF MASSACHUSETTS · EXECUTIVE OFFICE OF ENERGY & ENVIRONMENTAL AFFAIRS

Department of Conservation and Recreation
485 Ware Road
Belchertown, MA 01007
413-323-6921 413-784-1751 Fax
www.mass.gov/dcr



Maura T. Healey
Governor

Kimberley Driscoll
Lt. Governor

Rebecca L. Tepper, Secretary
Executive Office of Energy & Environmental Affairs

Brian Arrigo, Commissioner
Department of Conservation & Recreation

Figure 2 Quabbin Intake Works Control House (2022)



Figure 3 Quabbin Intake Works Control House (2022)



Figure 4 Quabbin Intake Works Control House during construction



Figure 5 Quabbin Intake Works Control House during construction

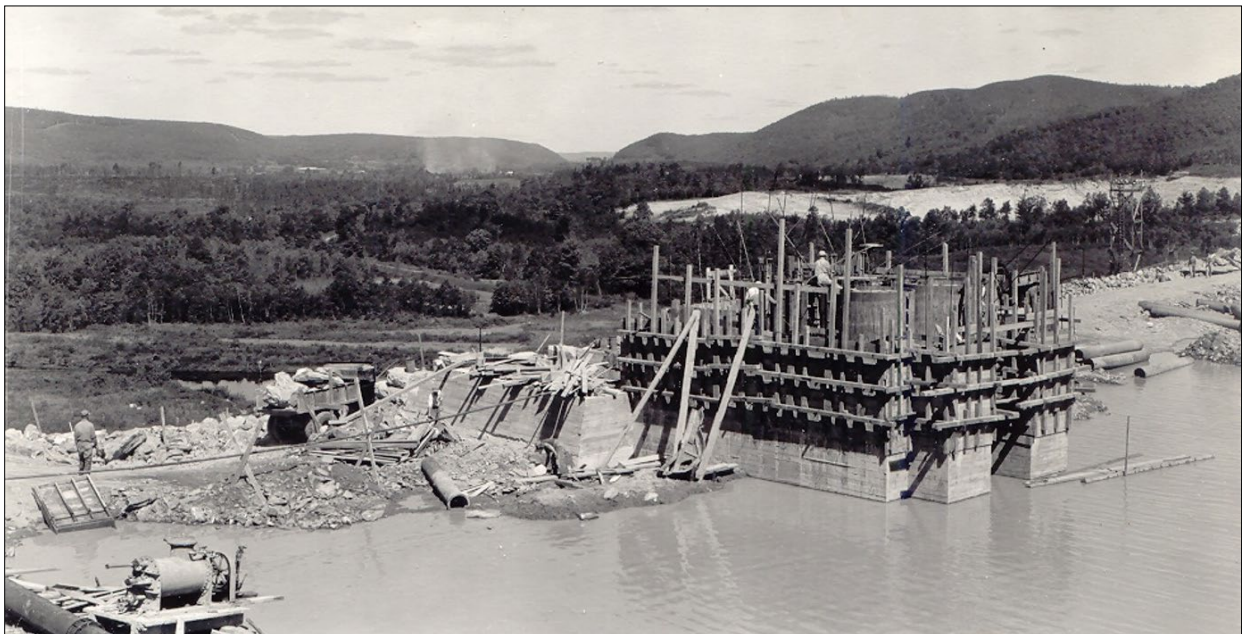


Figure 6 Quabbin Intake Works Control House during construction

