



MASSACHUSETTS DEPARTMENT OF
CONSERVATION AND RECREATION

Quinobequin Road and Trail Improvements Phase 1: Concept Design

Public Meeting 2 - Concept Alternatives

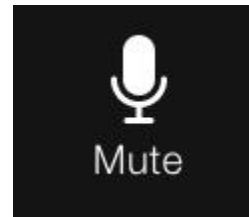
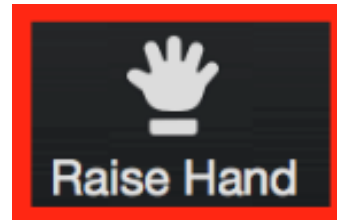


Thursday, October 8, 2020, 6:30 p.m.–8:00 p.m.
Virtual Meeting

Quinobequin Road and Trail Improvements

Phase 1: Concept Design

Meeting Logistics – ZOOM Platform



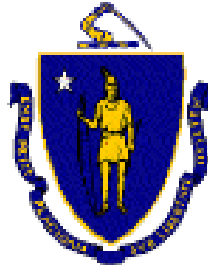
Quinobequin Road and Trail Improvements

Phase 1: Concept Design

Public Meeting 2 - Concept Alternatives



Thursday, October 8, 2020, 6:30 p.m.–8:00 p.m.
Virtual Meeting



Commonwealth of Massachusetts

Governor

Charles D. Baker

Lieutenant Governor

Karyn E. Polito

Energy and Environmental Secretary

Katie Theoharides

Department of Conservation and Recreation Commissioner

Jim Montgomery



DCR Mission Statement

*To protect, promote and enhance our
commonwealth of natural, cultural
and recreational resources
for the well-being of all.*

Meeting Purpose

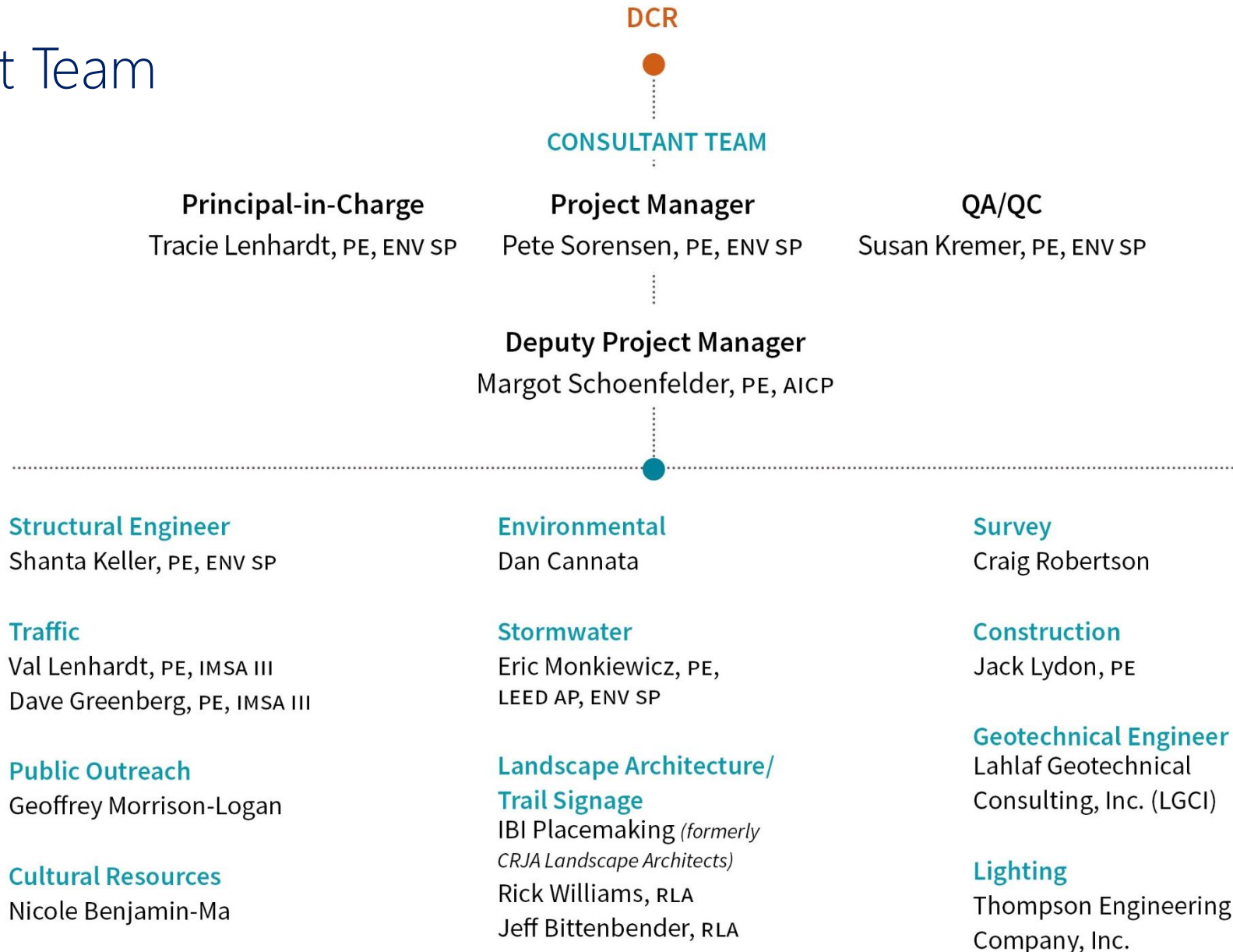
- Introduce Project Goals
- Provide Project Summary
- Introduce Project Team
- Introduce 3 Alternatives
 - 21st-Century Parkway
 - Charles River Greenway
 - Share the Road
- Present Alternatives Matrix
- Discuss Alternatives
- Present Project Schedule and Next Steps

Project Goals

- Improve safety for drivers, cyclists, and walkers
- Create an accessible recreational path along the river
- Improve the ecosystem function of the Charles River Reservation
- Preserve the scenic character of the roadway and parkland, while accommodating both safety and access



Project Team



Project Locus





Assessment Criteria

Archeological Resource Preservation

Historic Parkway Character Impacts

Natural Resource Preservation

Habitat Preservation & Restoration/Tree Removal

Stormwater Management/Water Quality

Floodplain Impacts

Traffic Calming

Safety

Accessibility

Cyclist Accommodations

Pedestrian Accommodations

Cost

Point System

4

Best

3

Better

2

Bad

1

Worst

Assessment Criteria Definitions

- **Archeological Resource Preservation** – *The Charles River shoreline is highly sensitive for the presence of archaeological resources. The project team has utilized the City of Newton's archaeological survey as a reference. Specific archaeological areas within the project limits are not currently known. Alternatives shall minimize excavations for construction activities between the roadway and the rivers edge.*
- **Historic Parkway Character impacts** – *Quinobequin Road is listed on the National Register of Historic Places. Alternatives shall minimize changes to the character of the parkway and its setting.*
- **Natural Resource Preservation** – *The Project will ultimately require work within wetland resource areas subject to protection under the Massachusetts Wetland Protection Act (WPA) and the Federal Clean Water Act (CWA).*
 - *The wooded areas along Quinobequin road contain many vegetated wetlands and small tributary streams associated with the Charles River. Areas subject to Regulation under the WPA in the vicinity of Quinobequin Road consist of:*
 - *Bordering Vegetated Wetland (BVW)*
 - *Bank (Associated with the Charles River and adjacent streams)*
 - *Land Under Waterbodies and Waterways (LUWW)*
 - *Bordering Land Subject to Flooding (BLSF) (100-Year Floodplain)*
 - *200-foot Riverfront Area (associated with the Charles River)*
 - *Impacts to vegetated wetland resource areas would require replication at a ratio of 1:1.*

Assessment Criteria Definitions

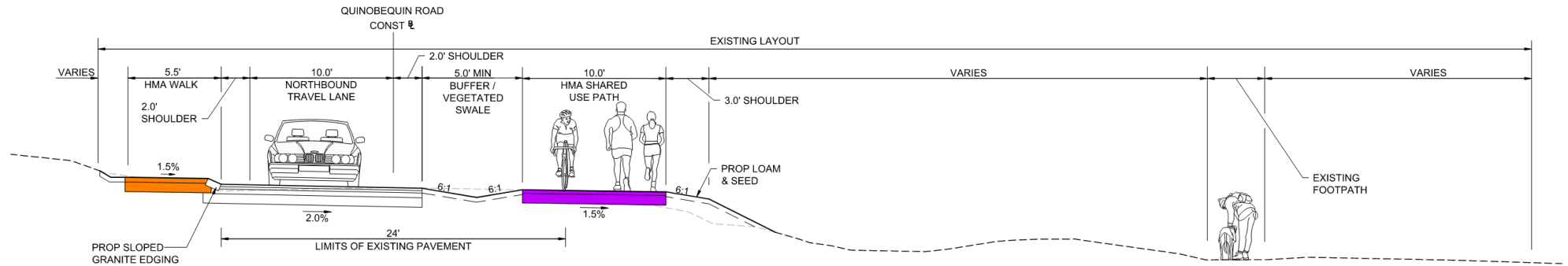
- **Habitat Preservation & Restoration/Tree Removal** - *The areas along the Charles River contain areas of primarily undisturbed wooded areas surrounding the existing footpaths. The wooded areas provide home for many wildlife species that are native to the watershed. Any proposed tree clearing would occur within the Riverfront Area and require replanting or restoration to maintain wildlife habitat and comply with state regulations related to the Riverfront Area.*
- **Stormwater Management/ Water Quality** – *Improve existing roadway drainage and address erosion. Comply with Massachusetts Stormwater Standards to the greatest extent practicable*
- **Floodplain Impacts** – *A significant portion of the project is within the 100-year flood plain. All fill placed within the flood plain requires compensatory flood storage providing a net zero impact.*
- **Traffic Calming** – *Ability to integrate potential traffic calming measures such as narrow lanes, signage, enforcement Raised cross walks, raised tables at intersections, etc.*
- **Safety** - *Provide separation between vehicles Pedestrian and Cyclists, lighting, Traffic calming, improved site distance for all users*

Assessment Criteria Definitions

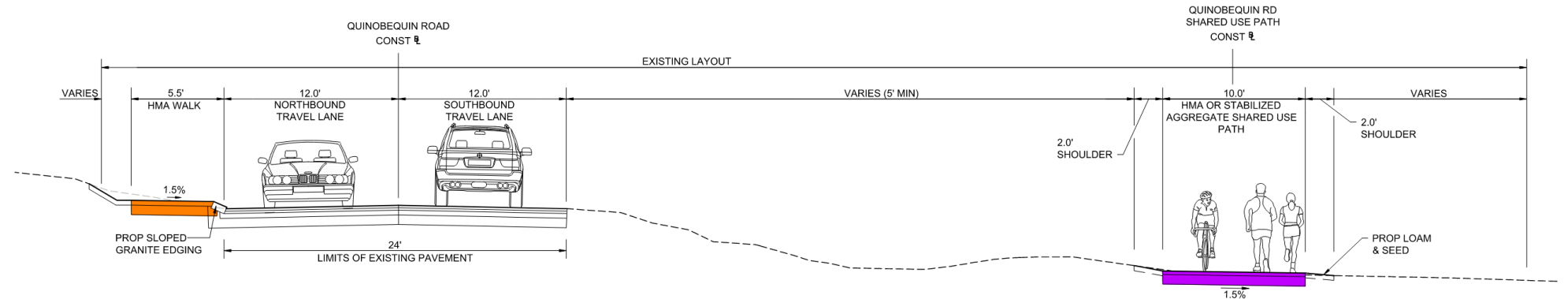
- **Accessibility** - *Provide compliant sidewalks, walking paths, ramps, crosswalks. Overlooks, etc, meeting the applicable accessibility guidelines*
- *2010 ADA Standards for Accessible Design*
- *521 CMR Architectural Access Board Regulations*
- *U.S. Forest Service Trail Accessibility Guidelines (FSTAG)*
- **Cyclist Accommodations** – *meets that meet current safety standards and design guidelines.*
- **Pedestrian Accommodations** - *Provides a safe accessible pedestrian experience with enhanced view corridors, ability to experience natural features.*
- **Cost** - *Order of magnitude cost to determine budgeting and funding purposes.*

3 Alternatives: Typical Sections

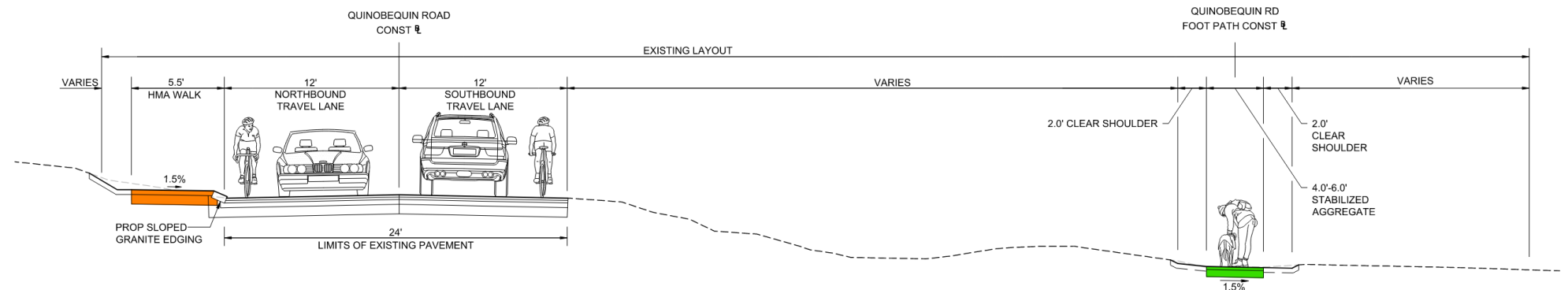
ALTERNATIVE 1 21st-Century Parkway



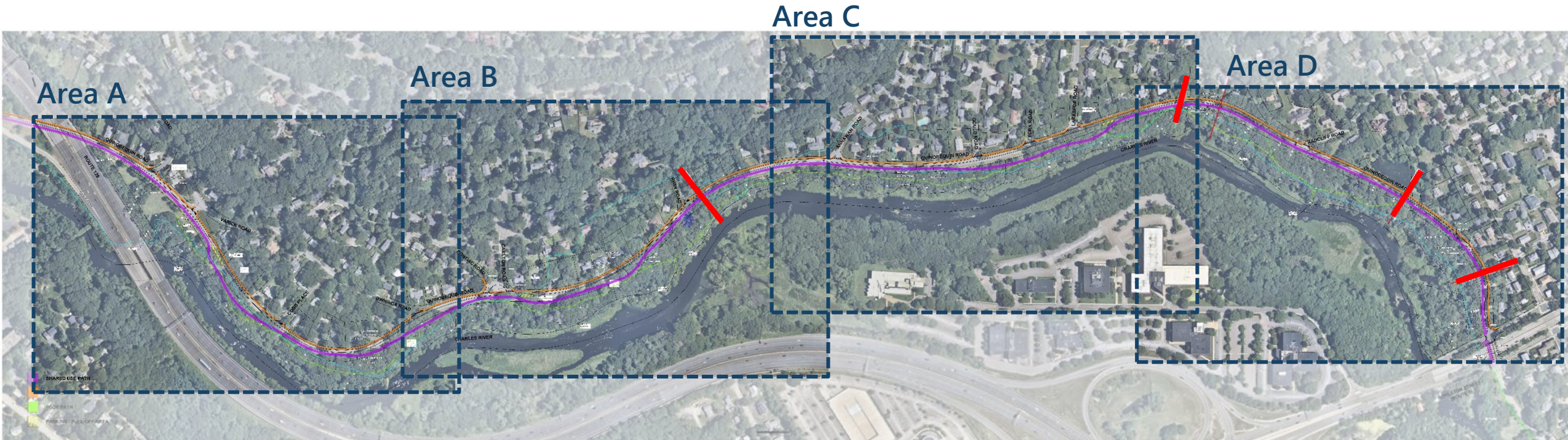
ALTERNATIVE 2 Charles River Greenway



ALTERNATIVE 3 Share the Road



Overall Plan View



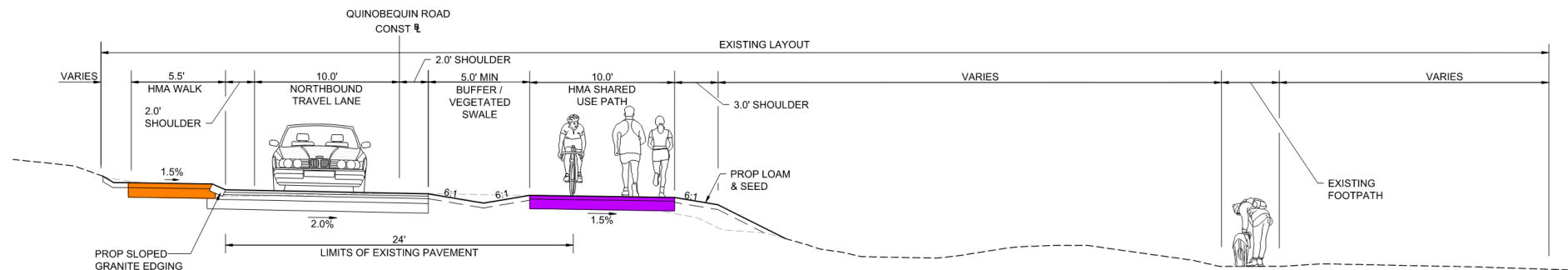
— Critical Section

Alternative 1

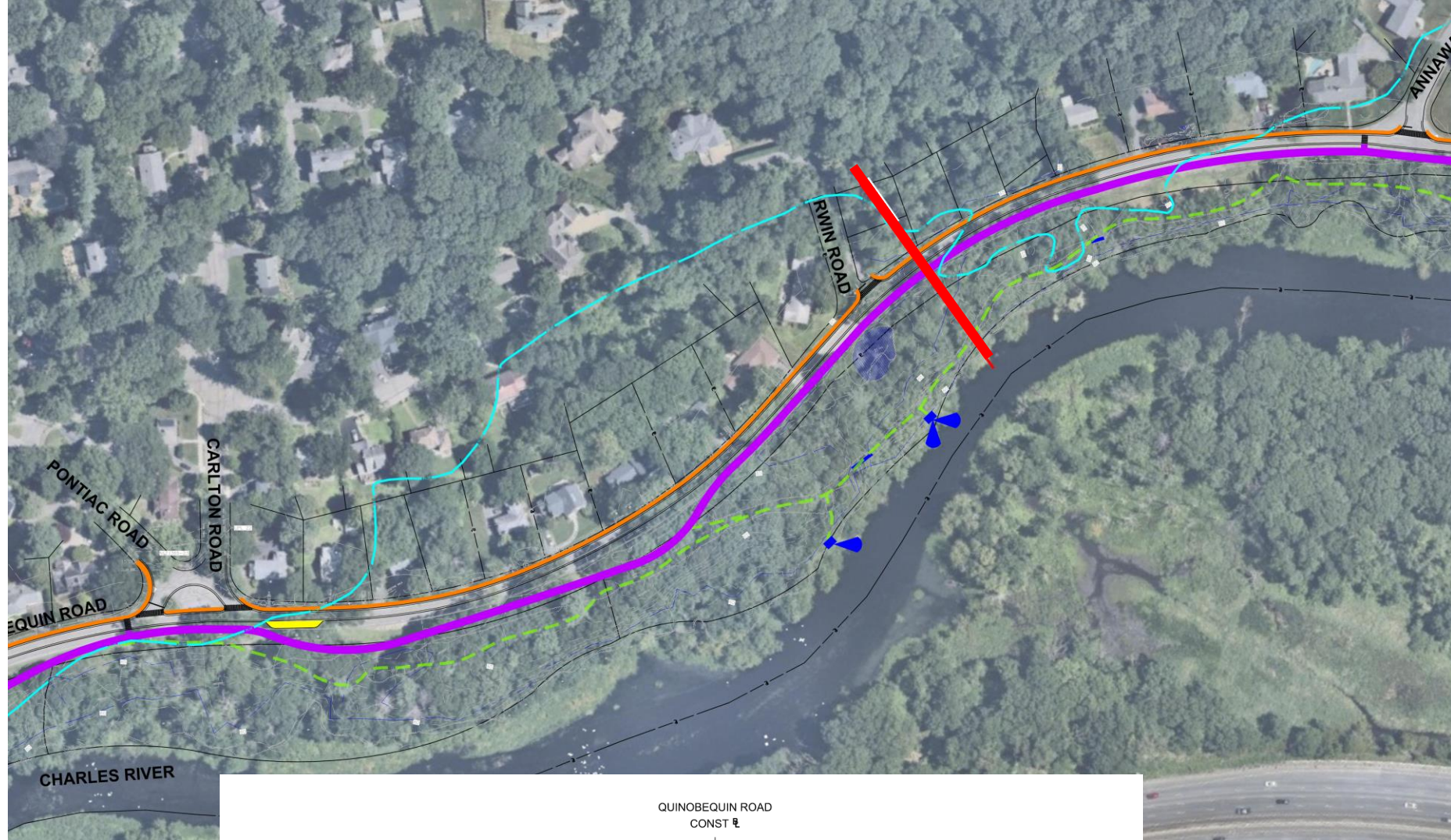
AREA A



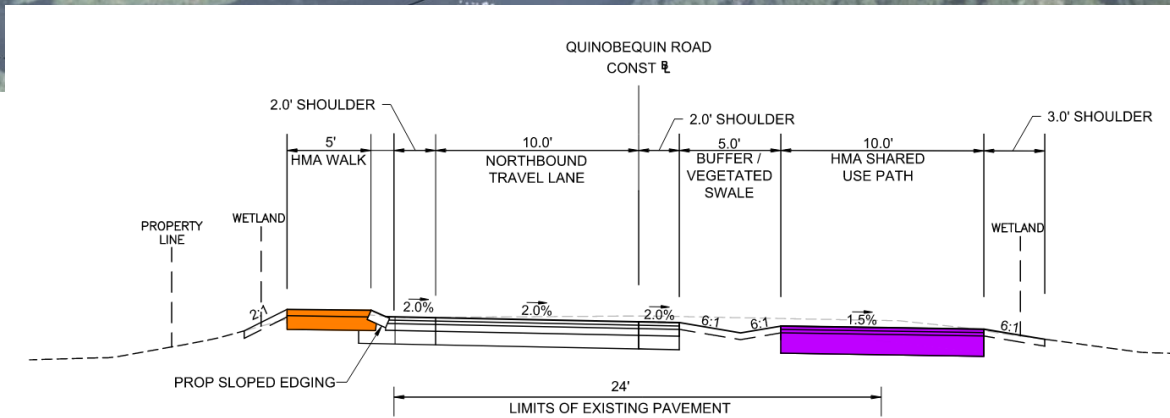
-  Shared Use Path
-  Sidewalk
-  Foot Path
-  Parking/Pull-Off Area
-  Boardwalk / River Overlook
-  100-Year Floodplain



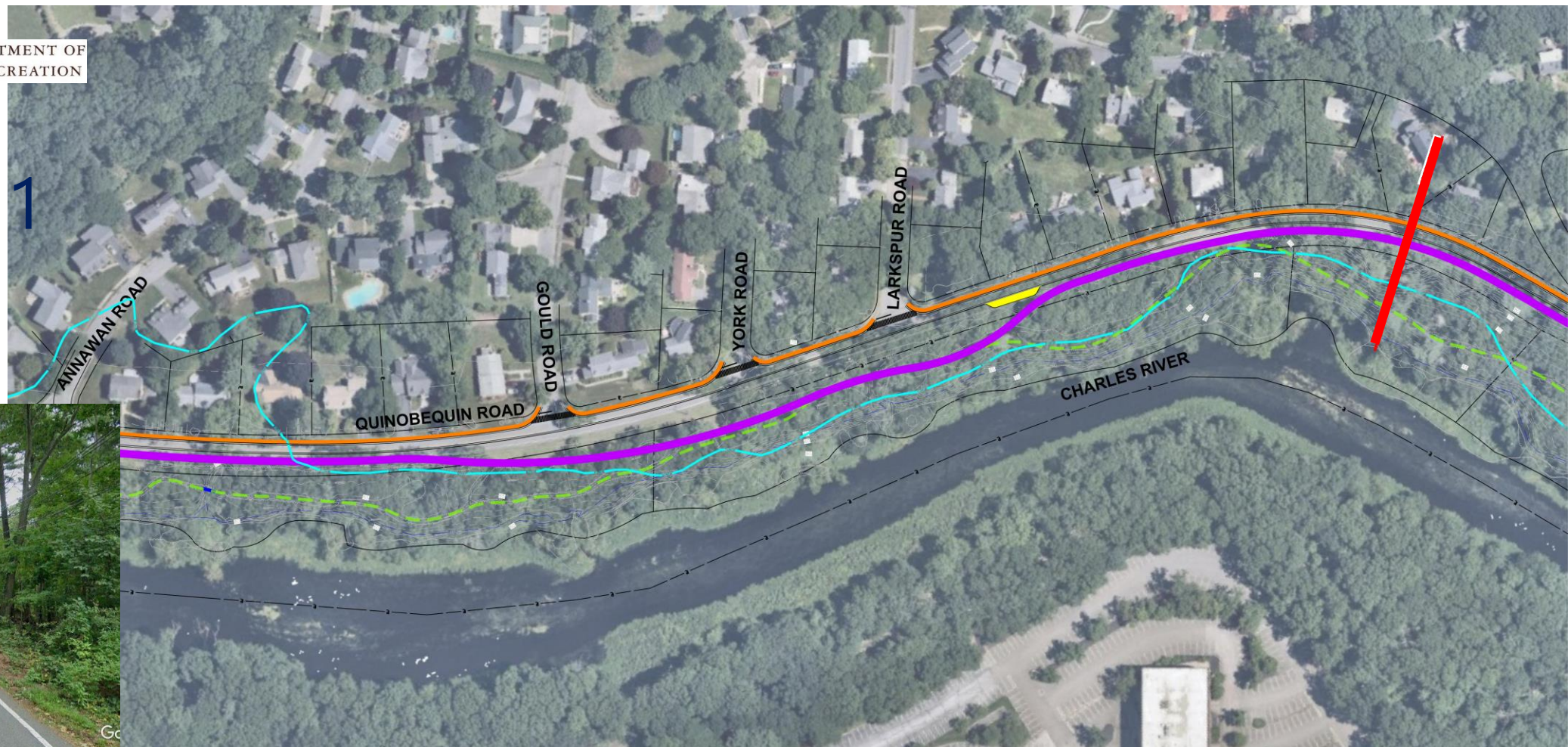
Alternative 1 AREA B



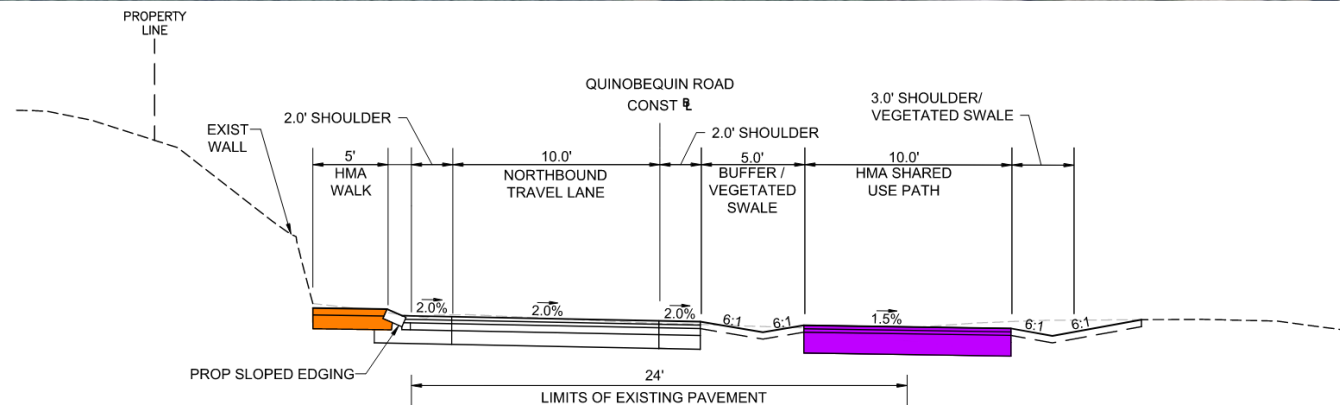
- Shared Use Path
- Sidewalk
- Foot Path
- Parking/Pull-Off Area
- Boardwalk / River Overlook
- 100-Year Floodplain



Alternative 1 AREA C

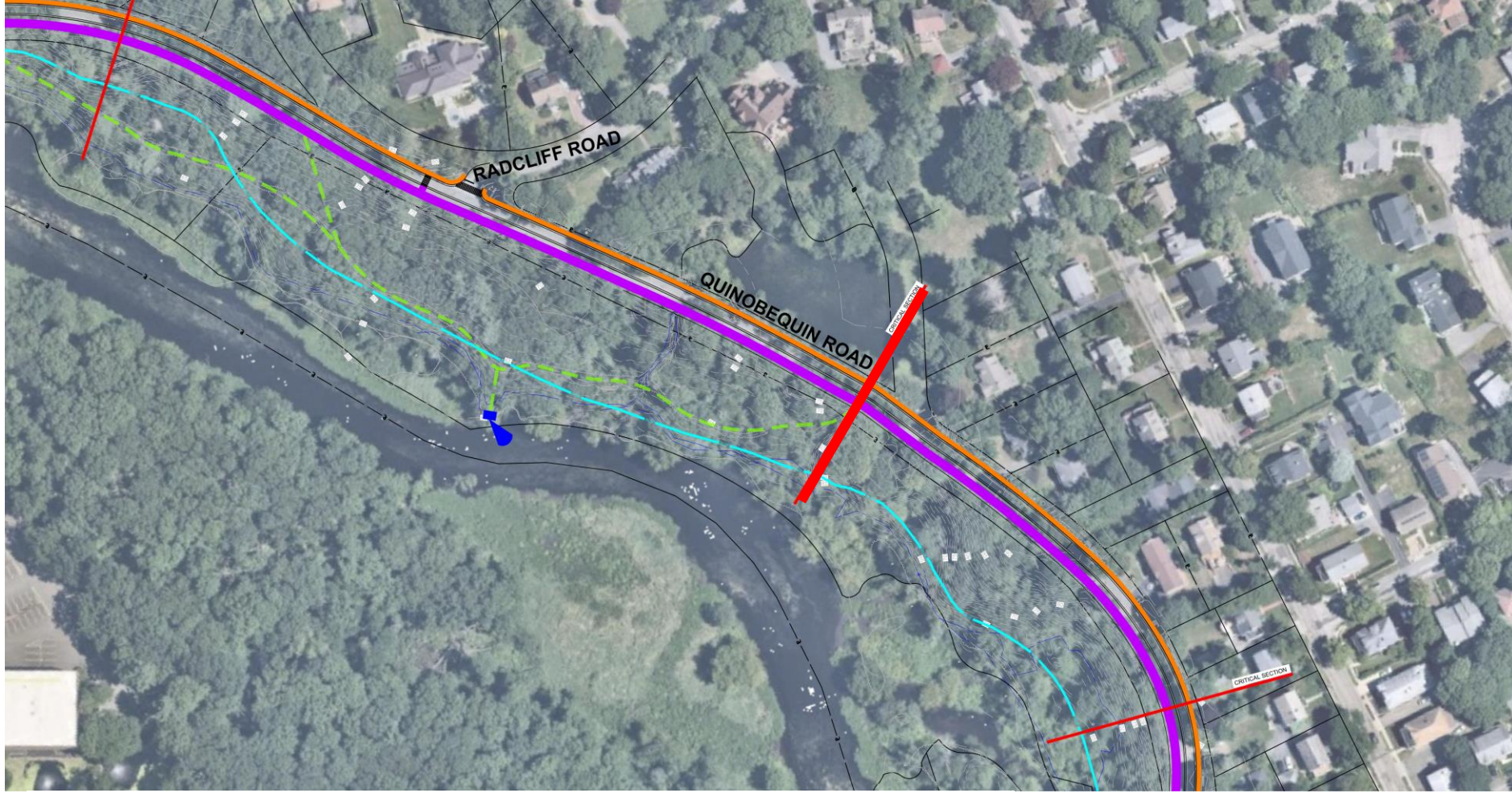





-  Shared Use Path
-  Sidewalk
-  Foot Path
-  Parking/Pull-Off Area
-  Boardwalk / River Overlook
-  100-Year Floodplain

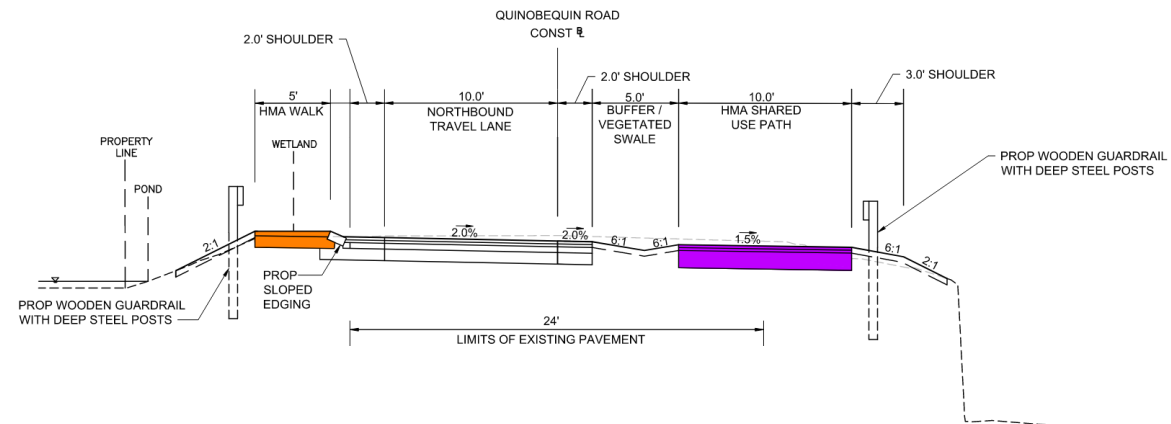


Alternative 1

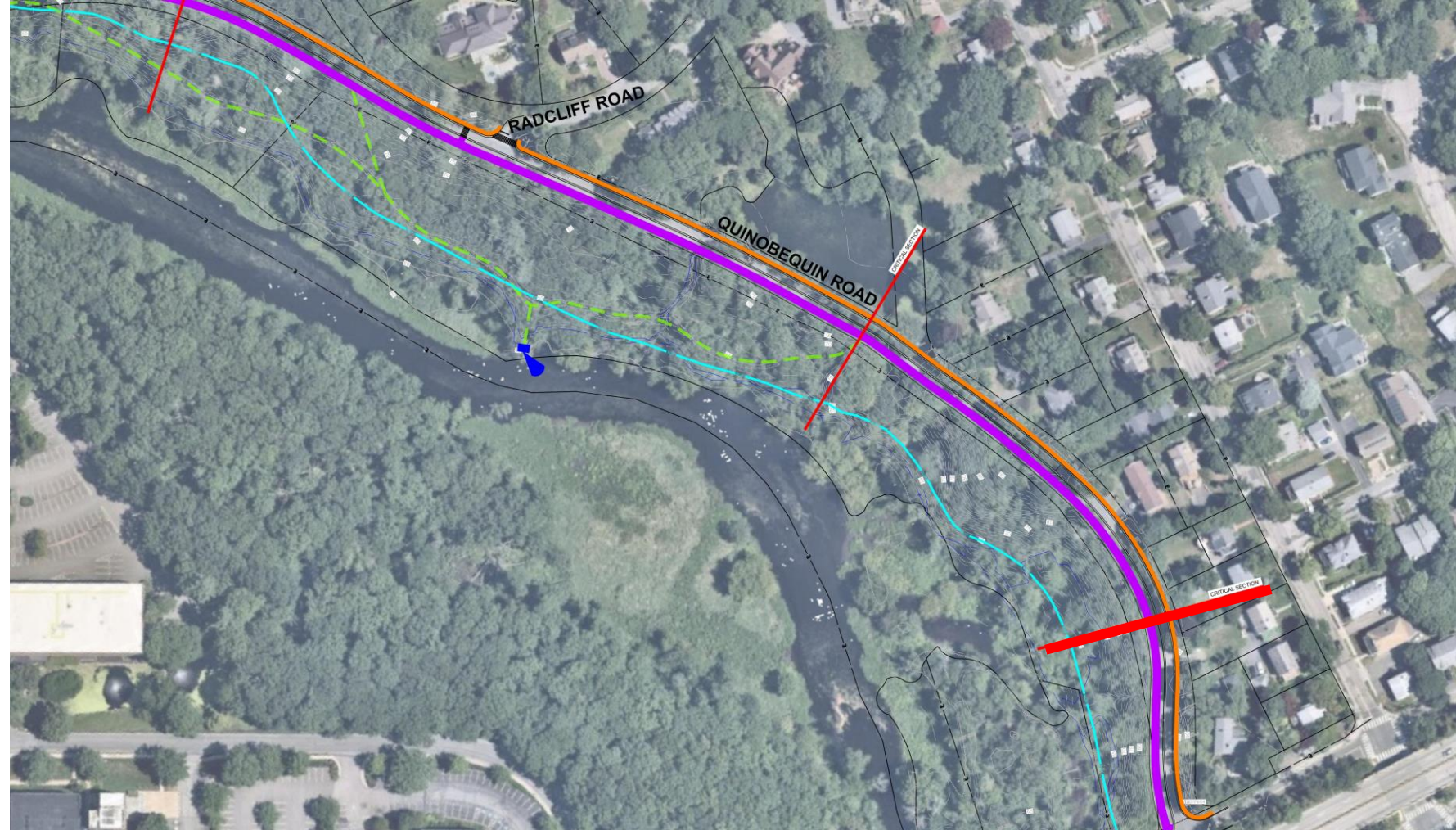
AREA D



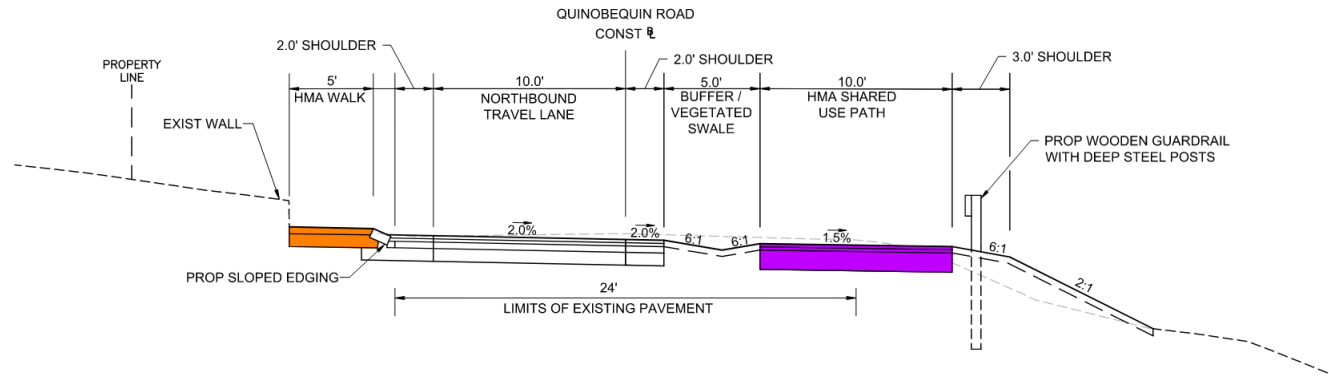
-  Shared Use Path
-  Sidewalk
-  Foot Path
-  Parking/Pull-Off Area
-  Boardwalk / River Outlook
-  100-Year Floodplain



Alternative 1 AREA D

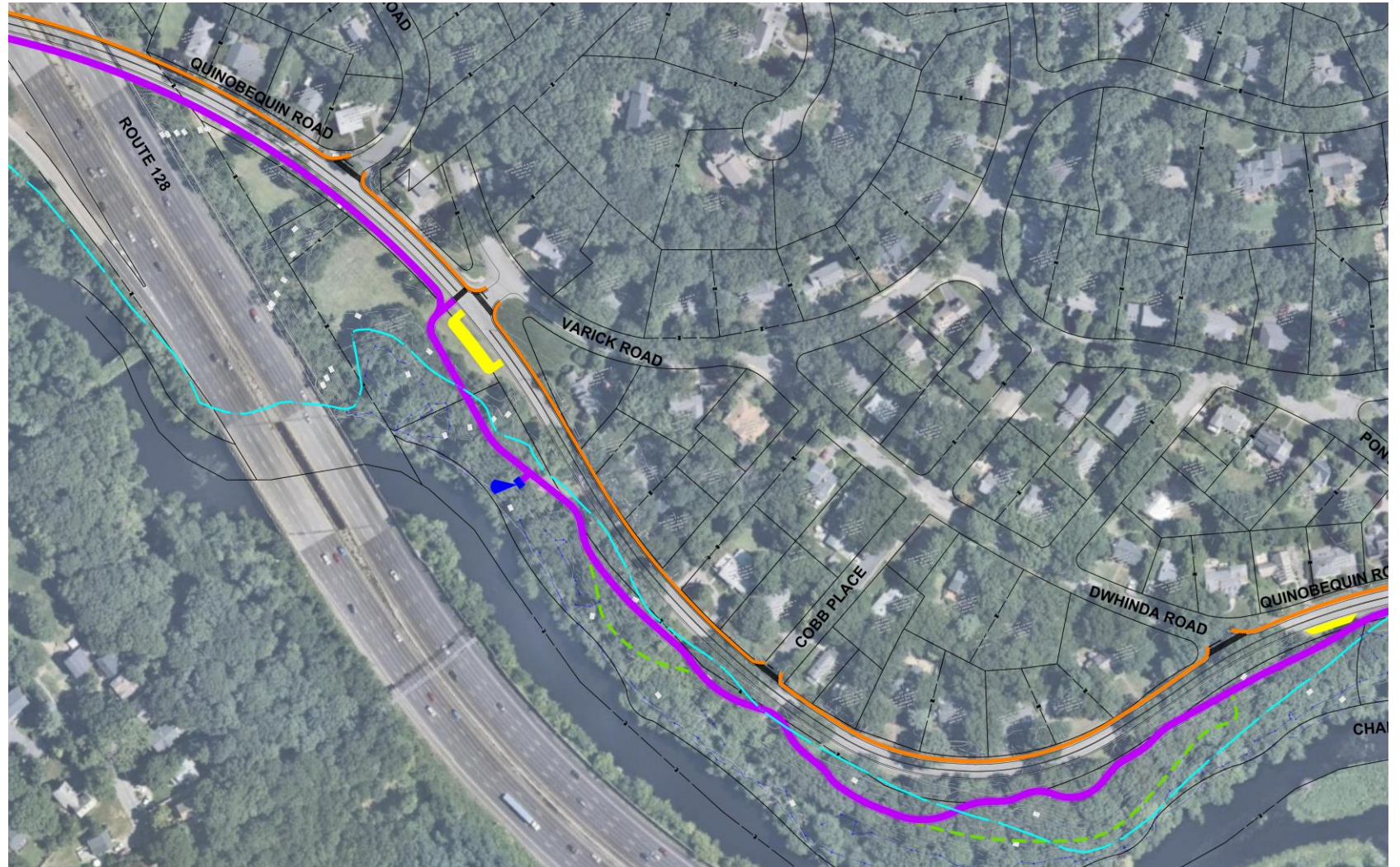


-  Shared Use Path
-  Sidewalk
-  Foot Path
-  Parking/Pull-Off Area
-  Boardwalk / River Outlook
-  100-Year Floodplain

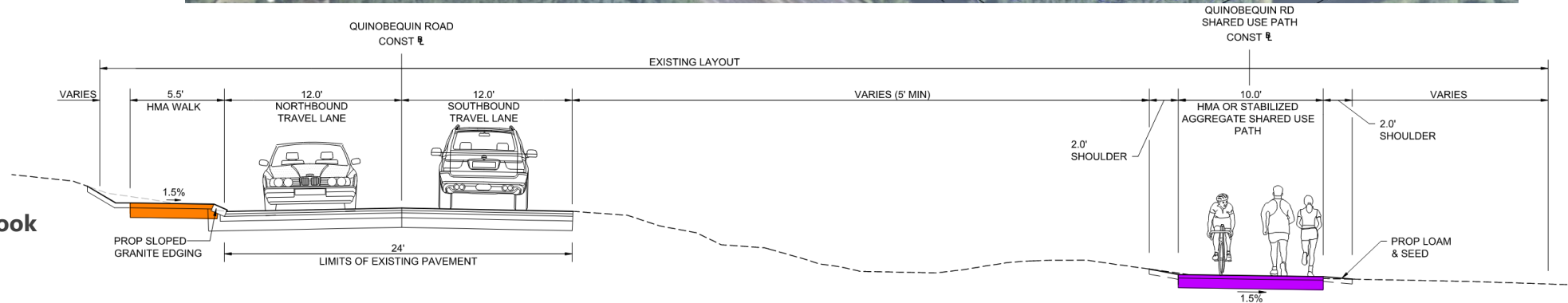


Alternative 2

AREA A



-  Shared Use Path
-  Sidewalk
-  Foot Path
-  Parking/Pull-Off Area
-  Boardwalk / River Overlook
-  100-Year Floodplain



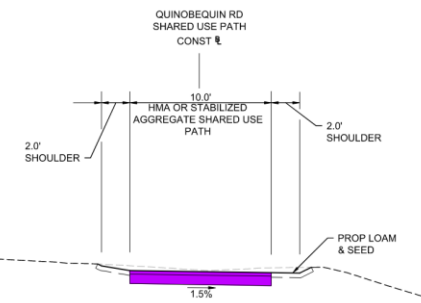
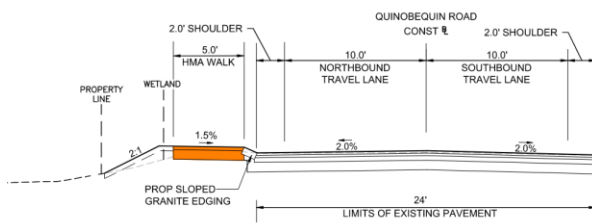
Alternative 2

AREA B



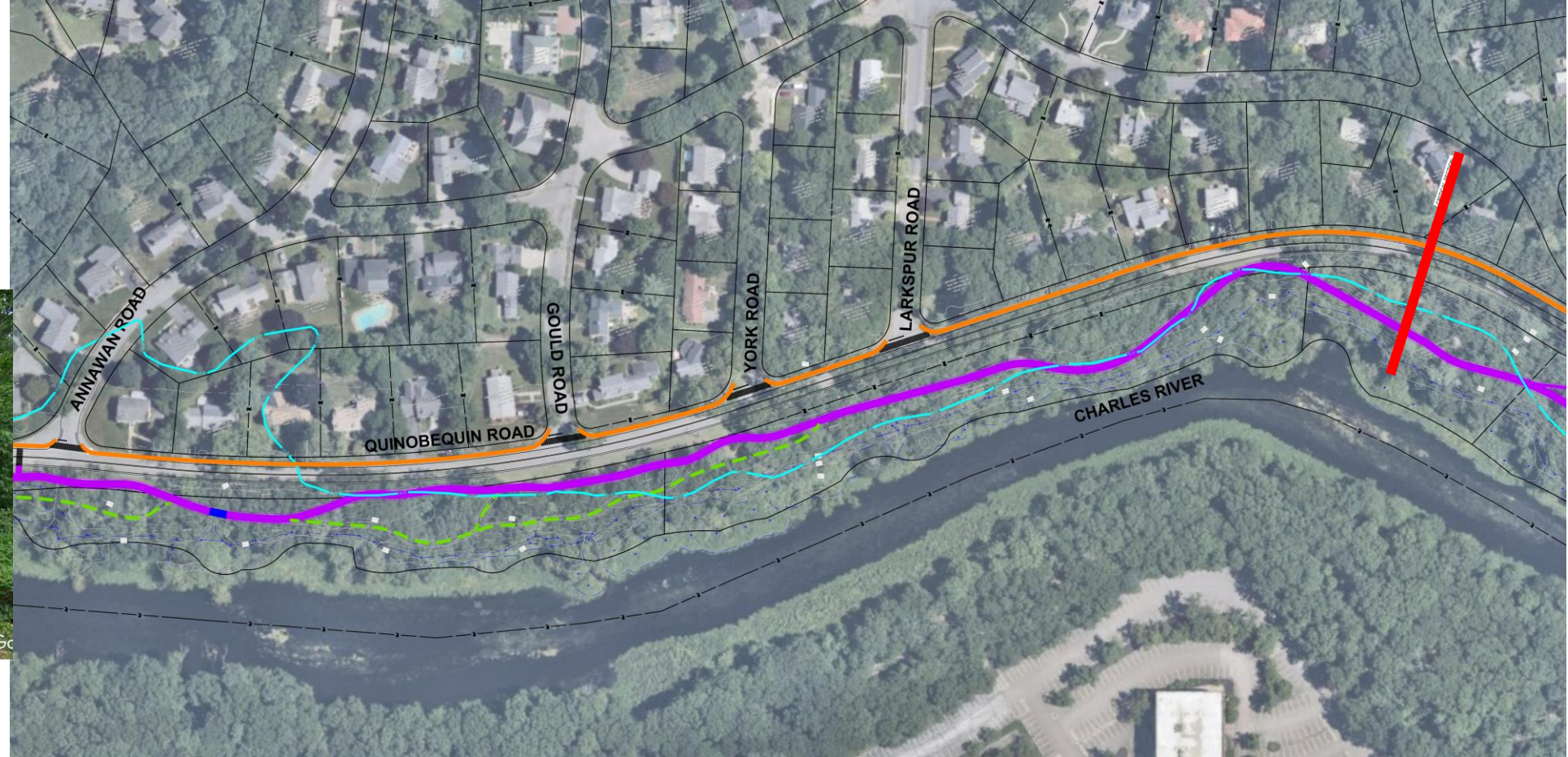
- Shared Use Path
- Sidewalk
- Foot Path
- Parking/Pull-Off Area
- Boardwalk / River Overlook





100-Year Floodplain

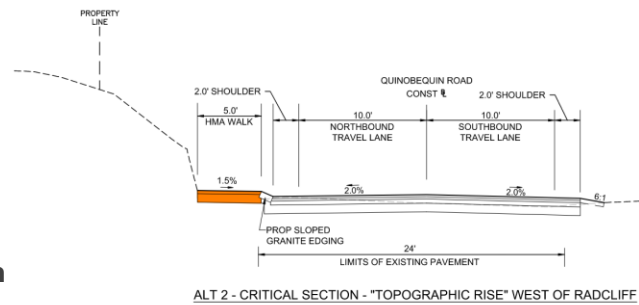


Alternative 2

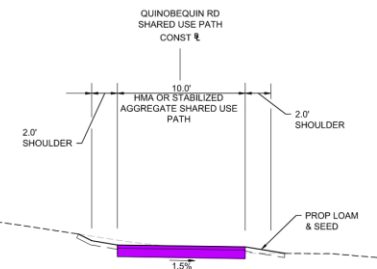
AREA C



-  Shared Use Path
-  Sidewalk
-  Foot Path
-  Parking/Pull-Off Area
-  Boardwalk / River Overlook
-  100-Year Floodplain

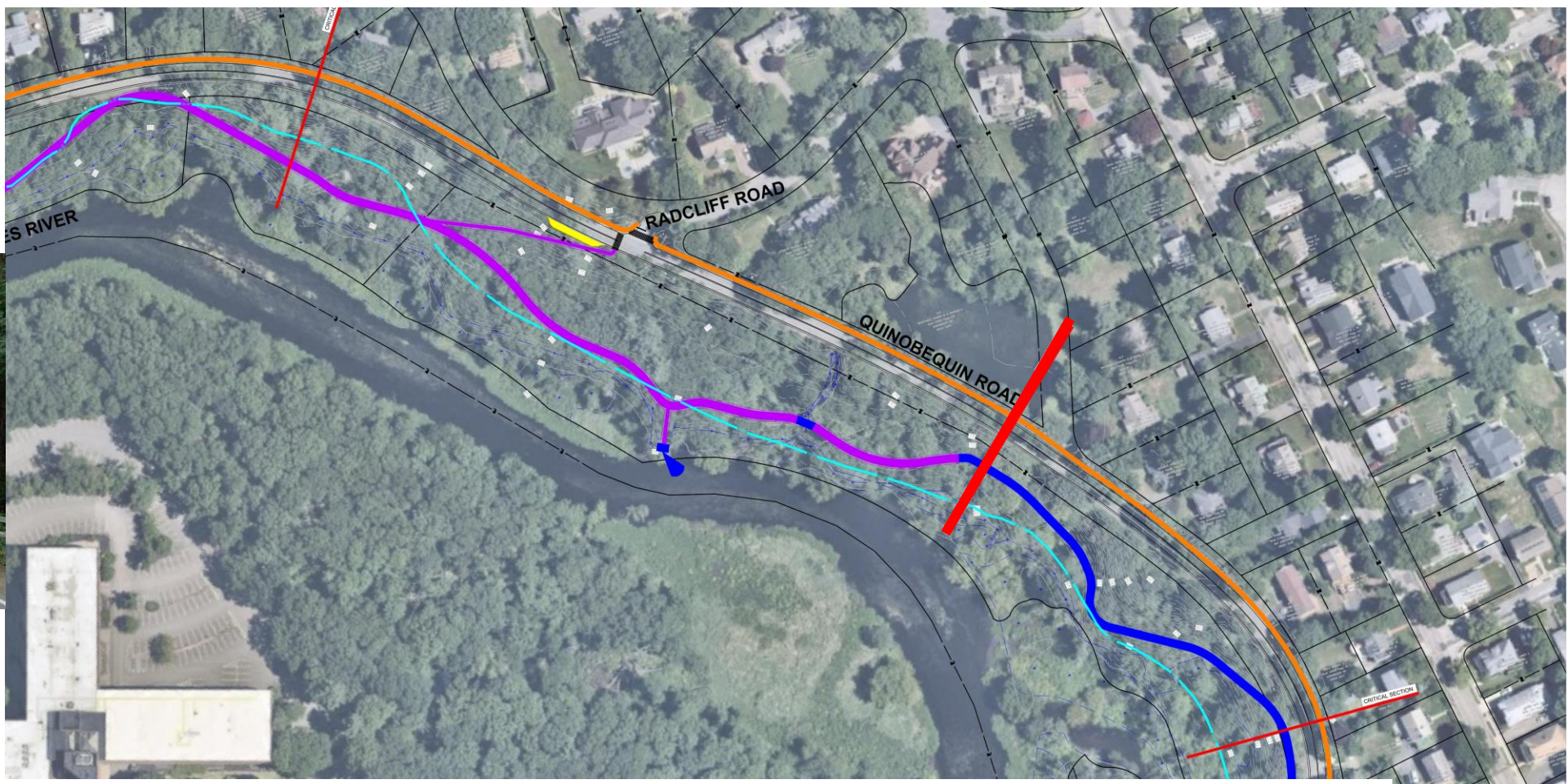


ALT 2 - CRITICAL SECTION - "TOPOGRAPHIC RISE" WEST OF RADCLIFF

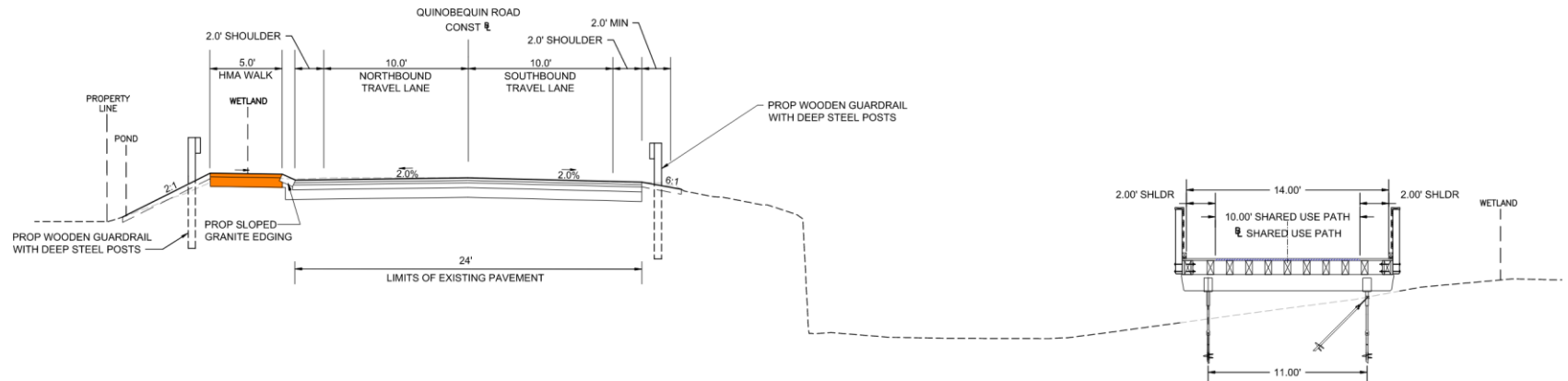


Alternative 2

AREA D

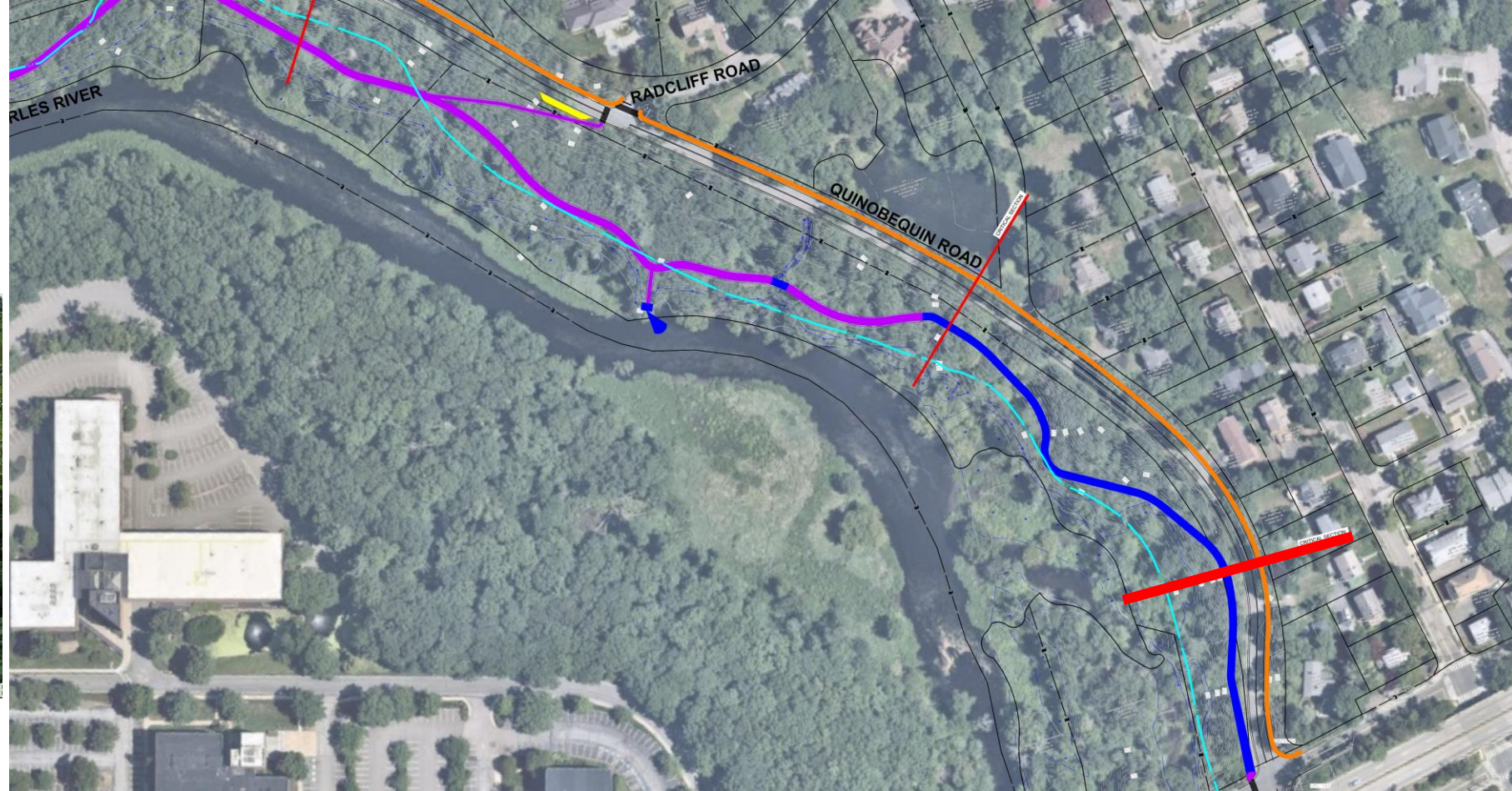


-  Shared Use Path
-  Sidewalk
-  Foot Path
-  Parking/Pull-Off Area
-  Boardwalk / River Overlook
-  100-Year Floodplain

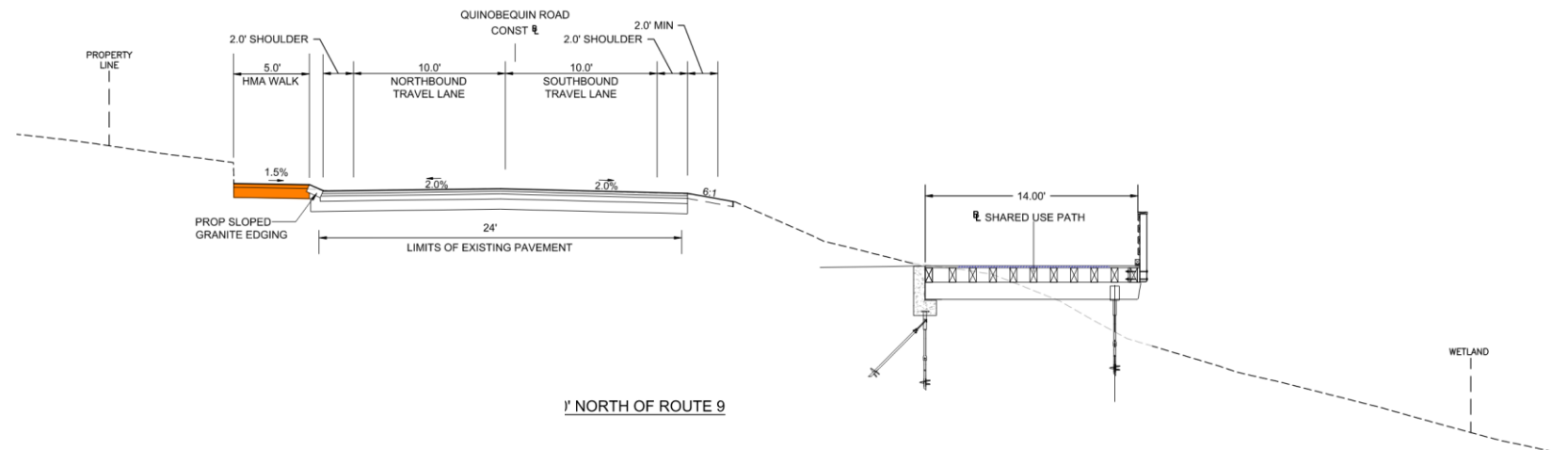


Alternative 2

AREA D

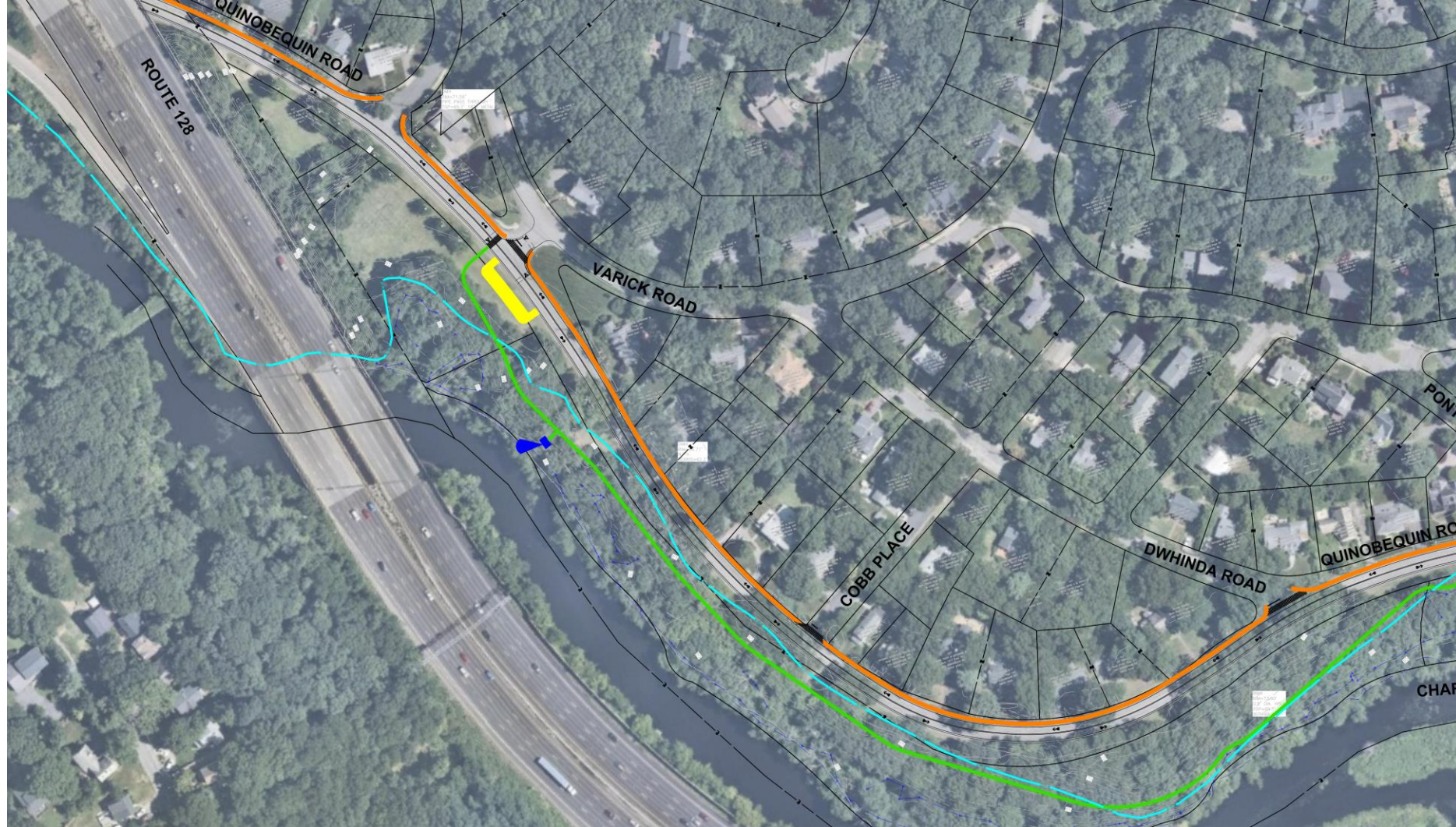







-  Shared Use Path
-  Sidewalk
-  Foot Path
-  Parking/Pull-Off Area
-  Boardwalk / River Overlook
-  100-Year Floodplain

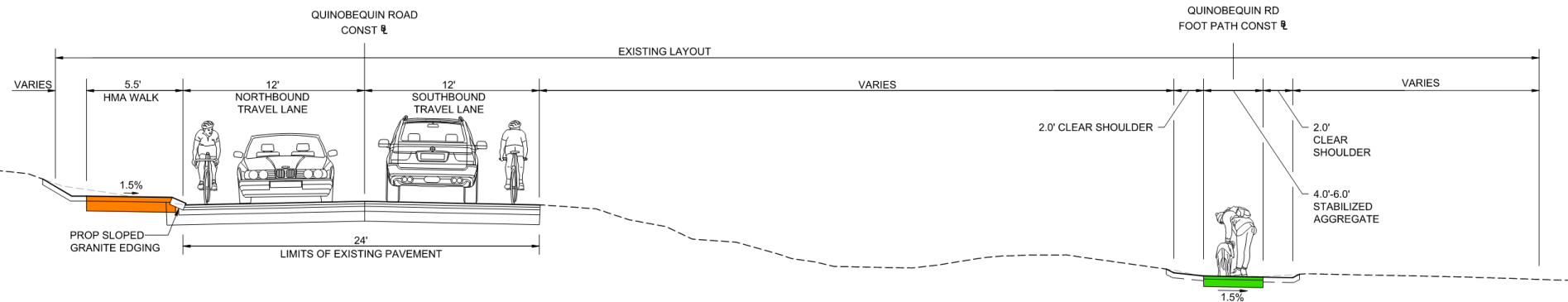


Alternative 3

AREA A








-  Sidewalk
-  Foot Path
-  Parking/Pull-Off Area
-  Boardwalk / River Overlook
-  100-Year Floodplain

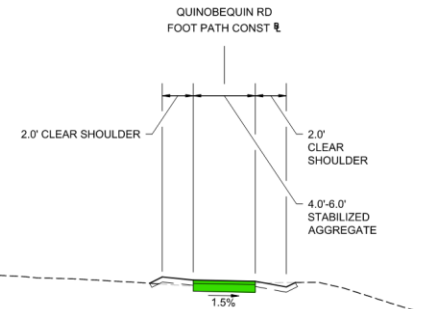
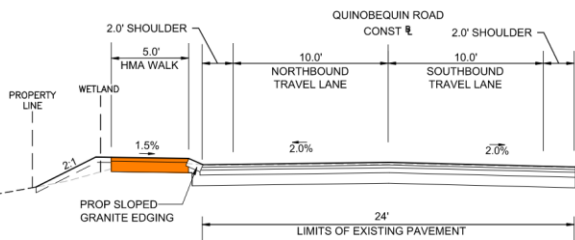
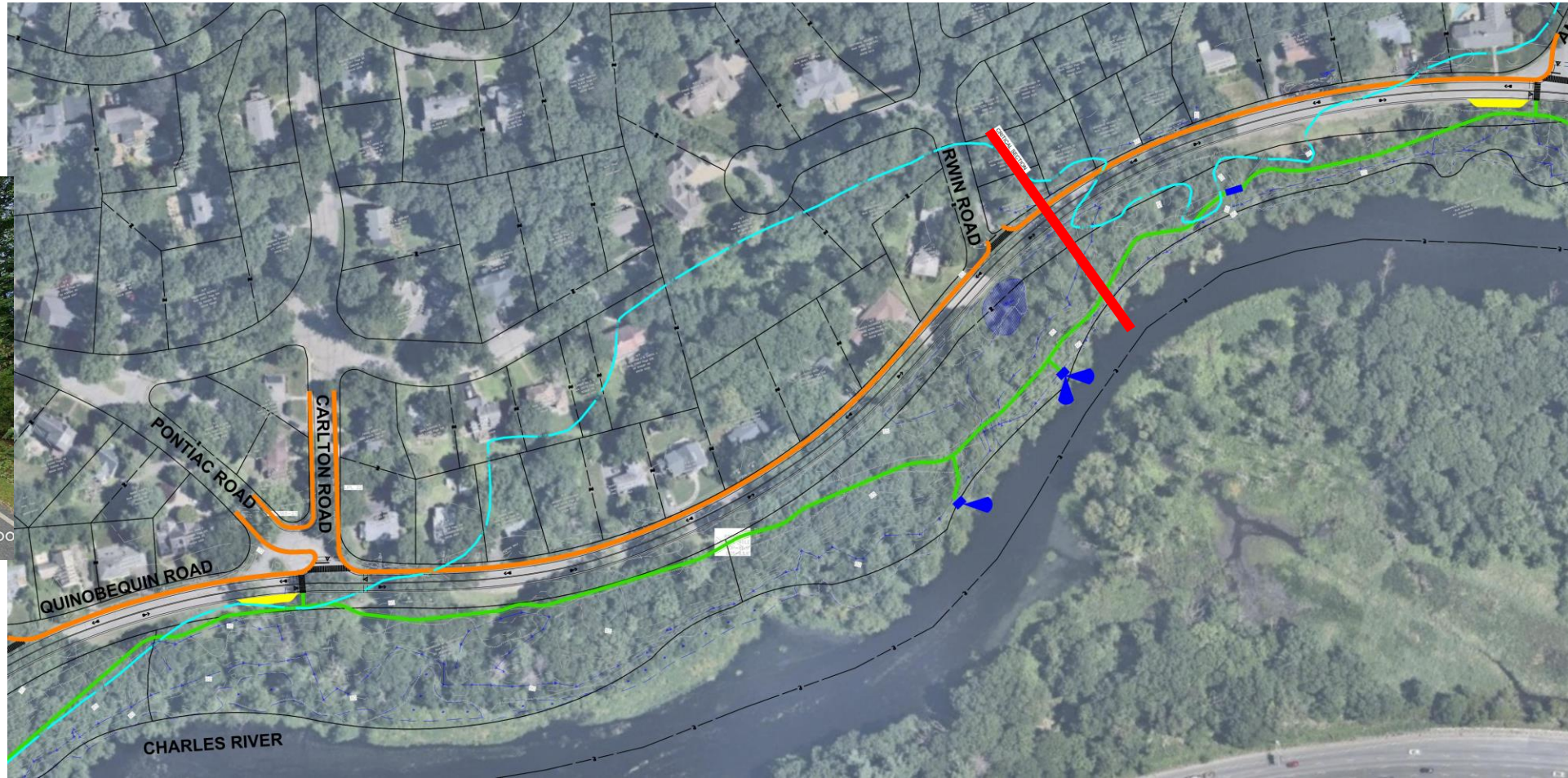


Alternative 3

AREA B



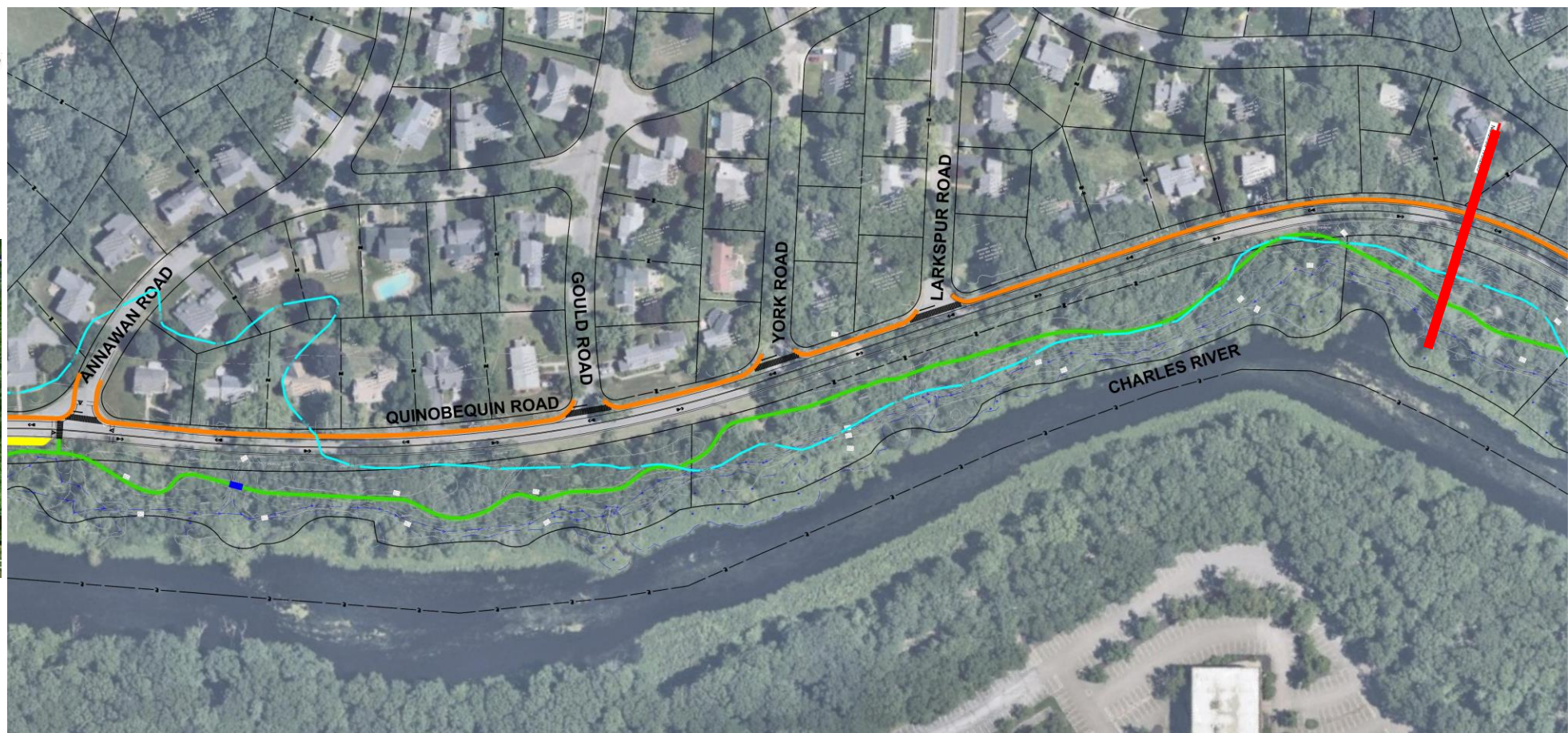
-  Sidewalk
-  Foot Path
-  Parking/Pull-Off Area
-  Boardwalk / River Overlook
-  100-Year Floodplain








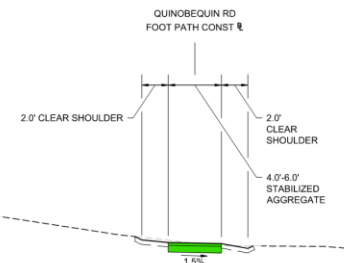
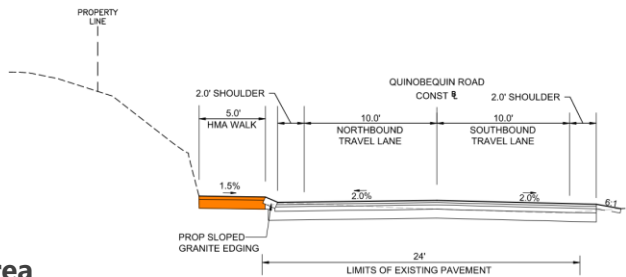
dcrr MASSACHUSETTS DEPARTMENT OF
CONSERVATION AND RECREATION

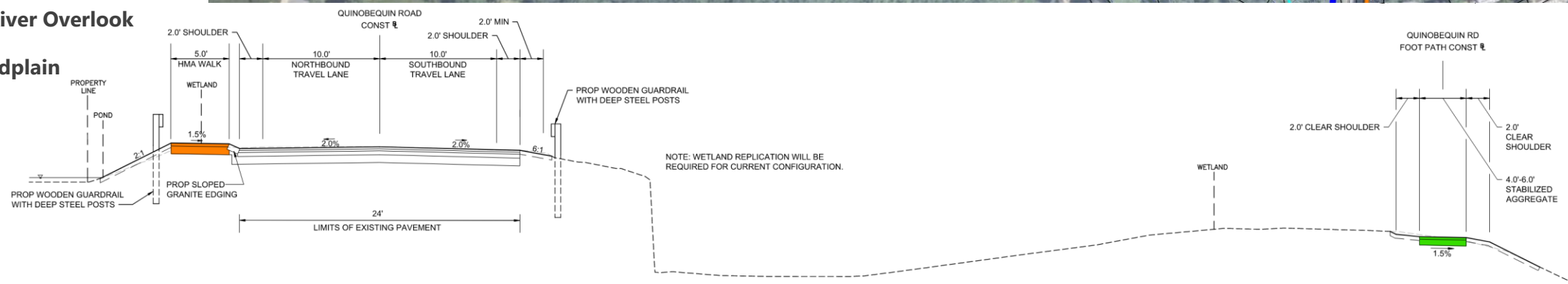
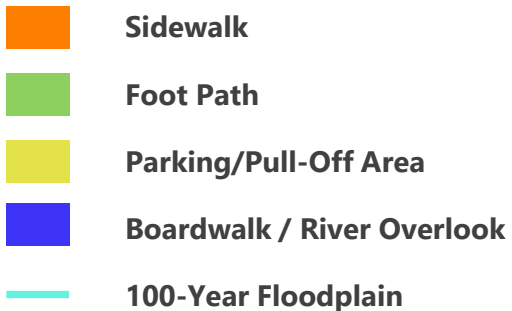
Alternative 3

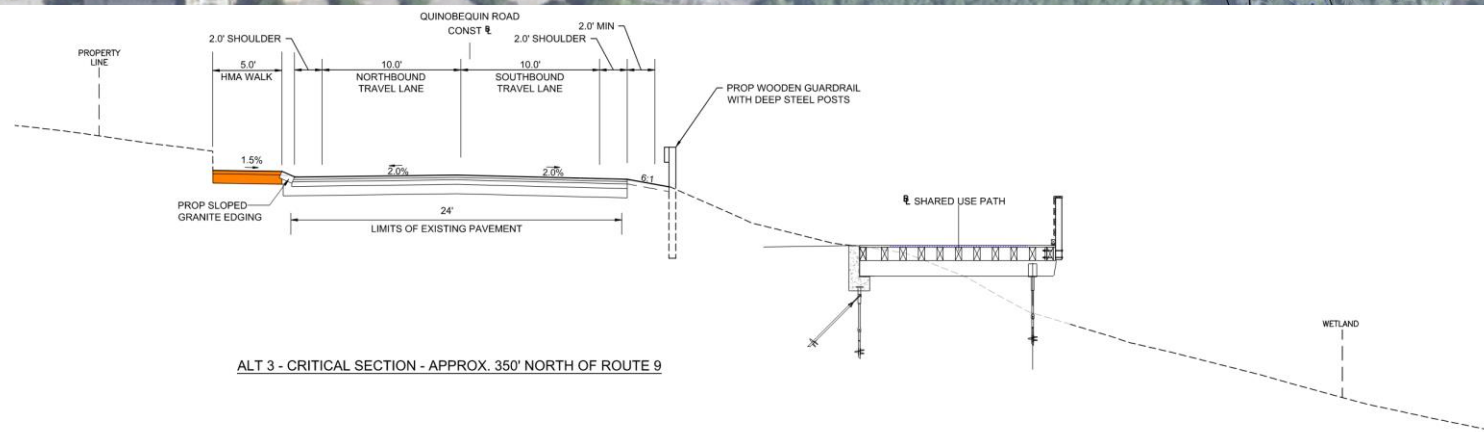
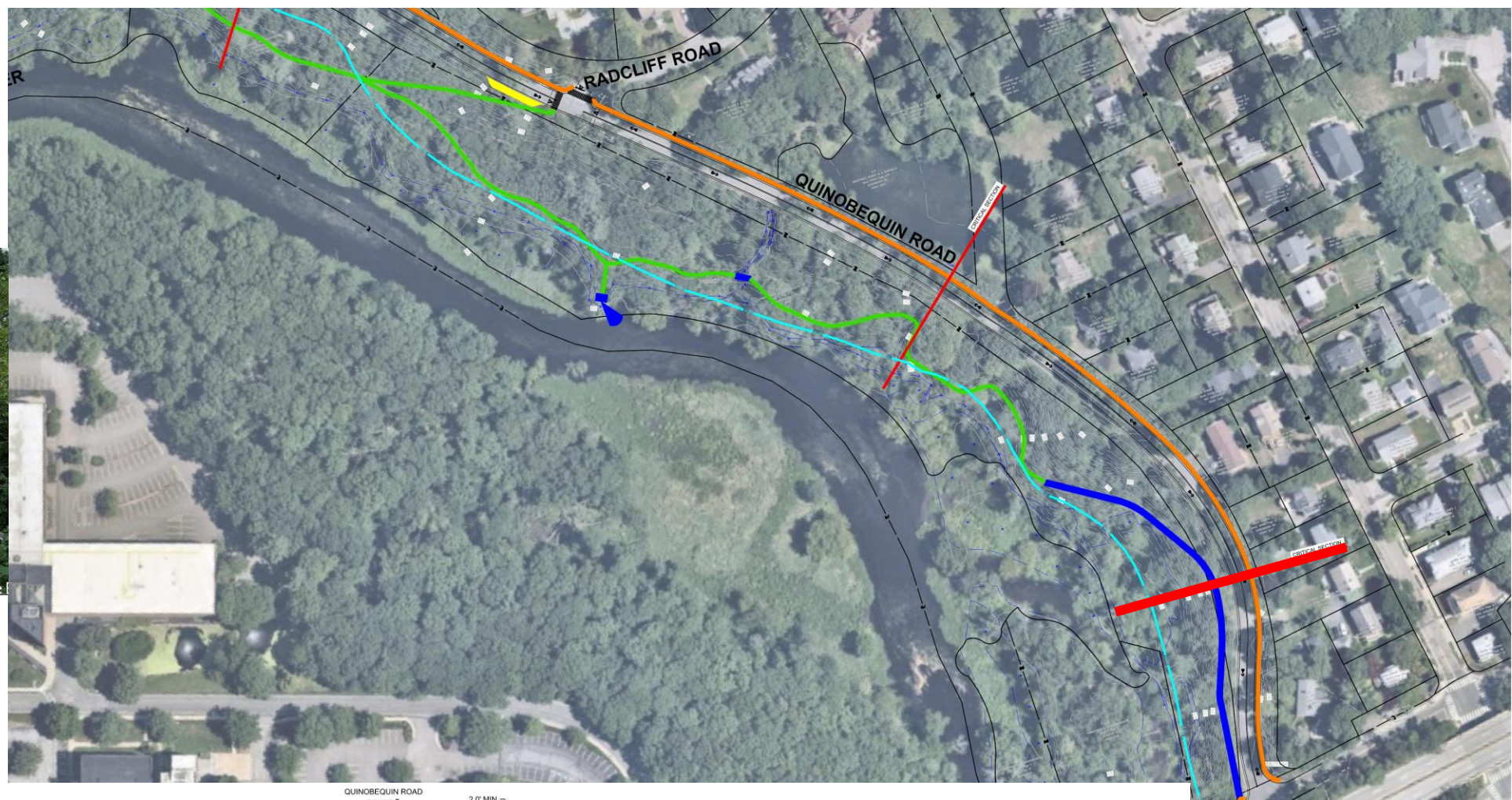
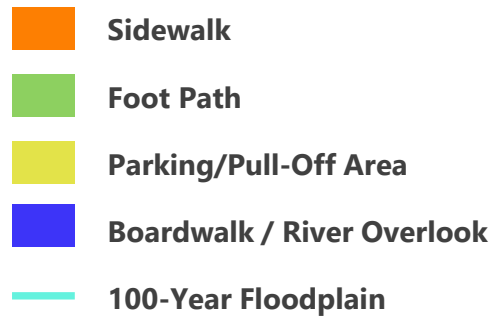
AREA C



-  Sidewalk
-  Foot Path
-  Parking/Pull-Off Area
-  Boardwalk / River Overlook
-  100-Year Floodplain

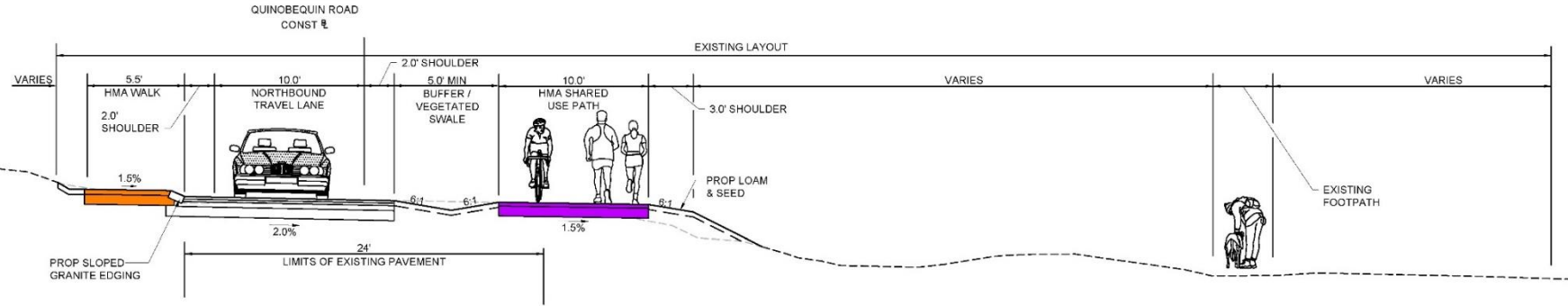




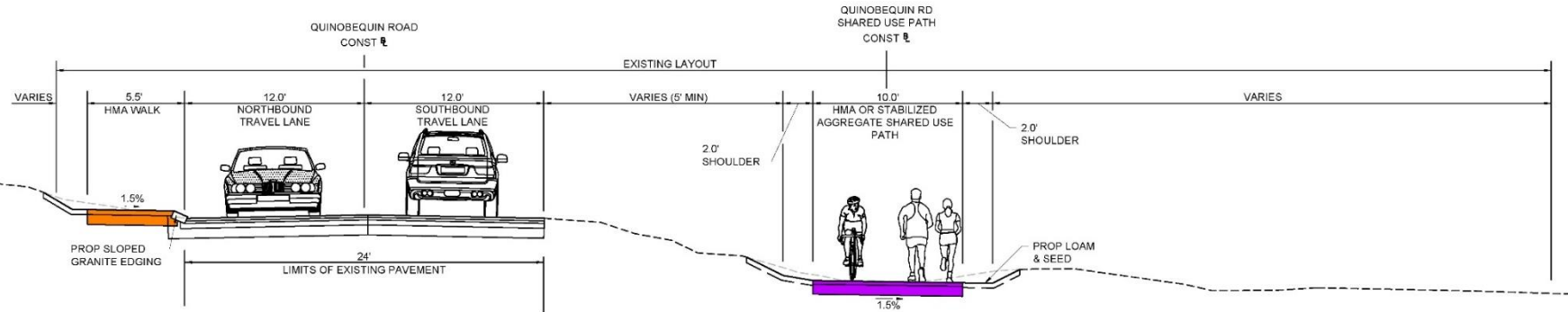




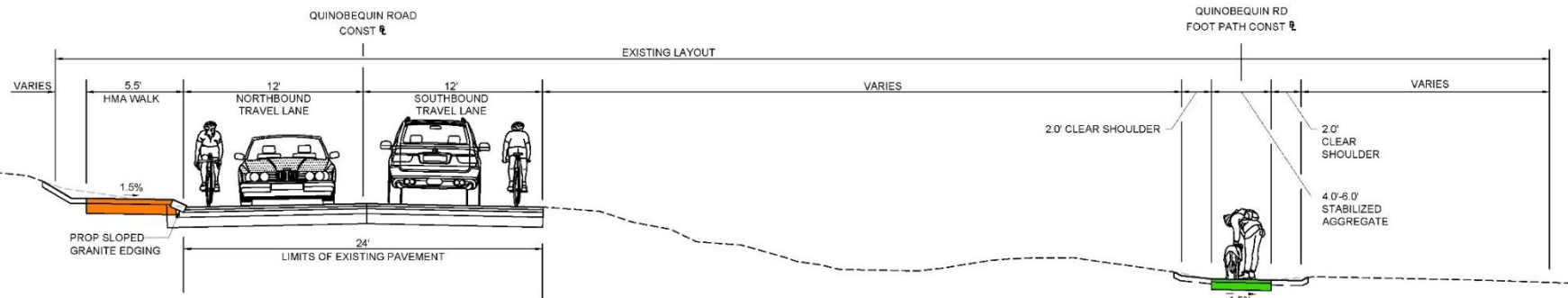
Kit of Parts - Paving Types



Alternative 1



Alternative 2

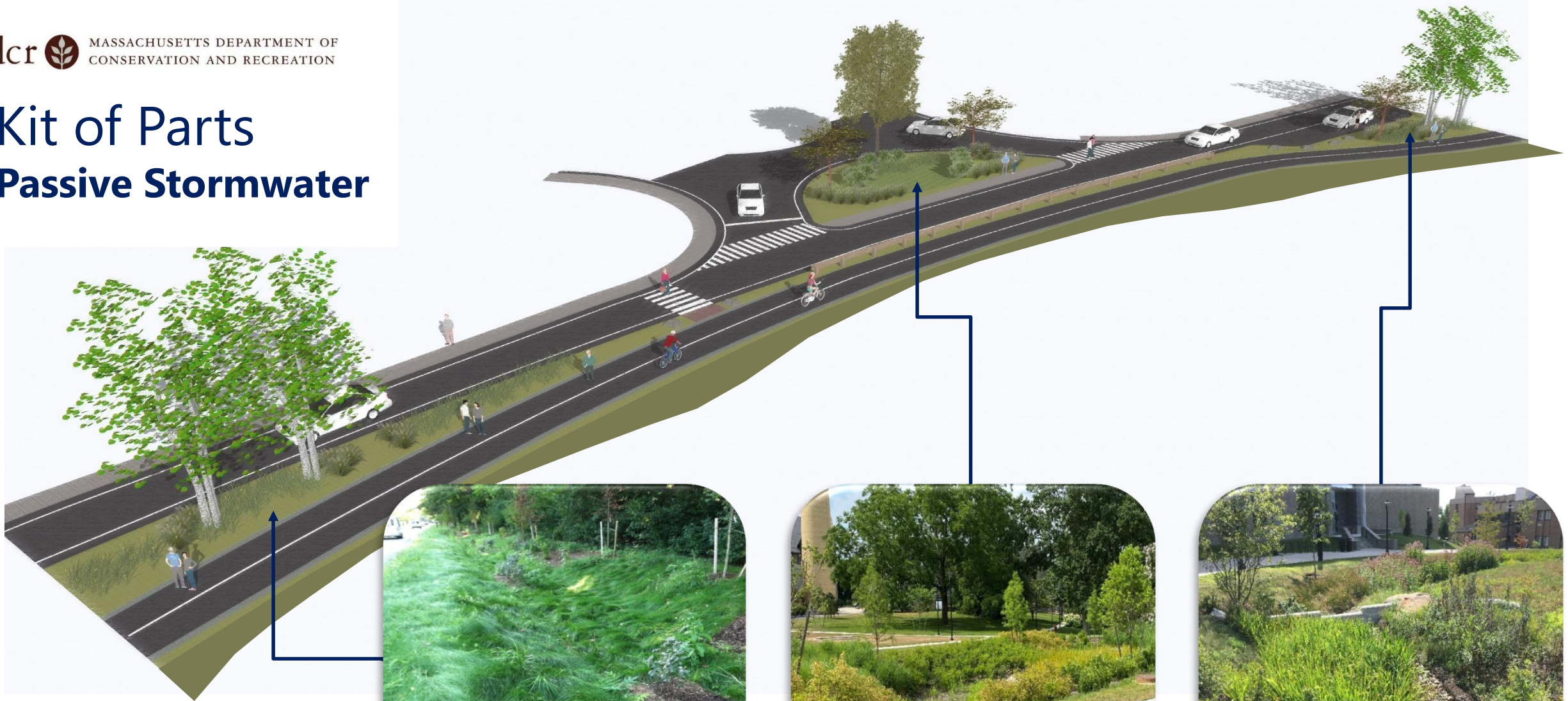


Alternative 3



Kit of Parts

Passive Stormwater



Vegetated Swale



Rain Garden



Bioretention Swale

Kit of Parts Bridge Crossing



Existing



Proposed w/ Curb



Proposed w/ Railing

Kit of Parts Boardwalk



Wood at Installation



Weathered Wood



Helical Pile Supports

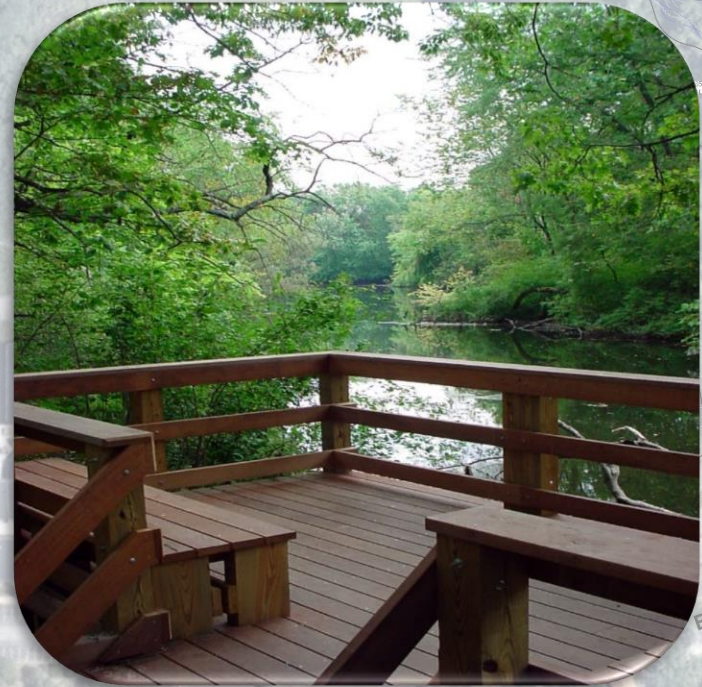
Kit of Parts Scenic Overlook



Existing



Rock Overlook



Deck Overlook

Kit of Parts

Parking / Crossings



Parallel Parking Pull-Off



Small Parking Area



Raised Crosswalk

Kit of Parts Site Elements



Kayak Launch



Trail Head



Wood Guardrail



Educational Signage





Assessment Criteria Matrix

Point System

- 4 Best
- 3 Better
- 2 Bad
- 1 Worst

| OBJECTIVES | ALTERNATIVE 1 21st Century Parkway | ALTERNATIVE 2 Charles River Greenway | ALTERNATIVE 3 Share the Road |
|---|--|--|---------------------------------|
| TOTAL POINTS | 35 | 27 | 29 |
| Archeological Resource Preservation | 4 | 1 | 2 |
| Historic Parkway Character Impacts | 1 | 3 | 4 |
| Natural Resource Preservation | 2 | 1 | 3 |
| Habitat Preservation & Restoration/Tree Removal | 2 | 1 | 2 |
| Stormwater Management/Water Quality | 2 | 1 | 3 |
| Floodplain Impacts | 3 | 1 | 2 |
| Traffic Calming | 4 | 3 | 2 |
| Safety | 4 | 4 | 1 |
| Accessibility | 4 | 4 | 2 |
| Cyclist Accommodations | 3 | 3 | 1 |
| Pedestrian Accommodations | 4 | 4 | 3 |
| Cost | 2 | 1 | 4 |



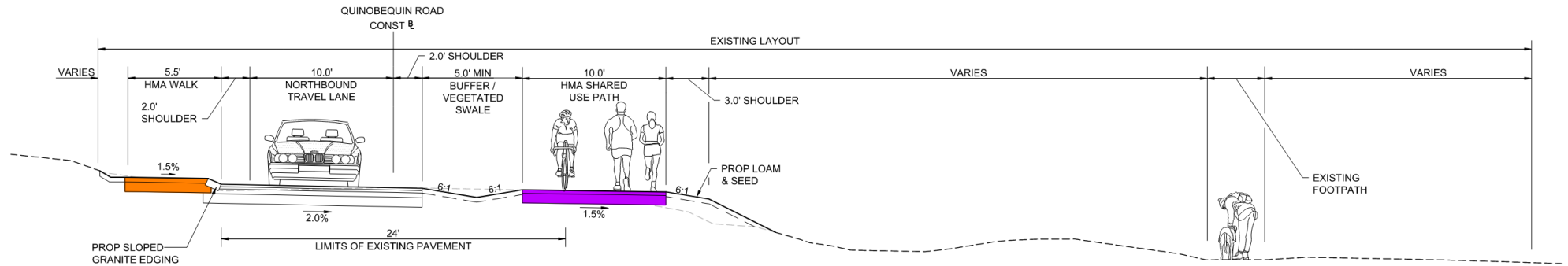
Question and Answer

Prompts:

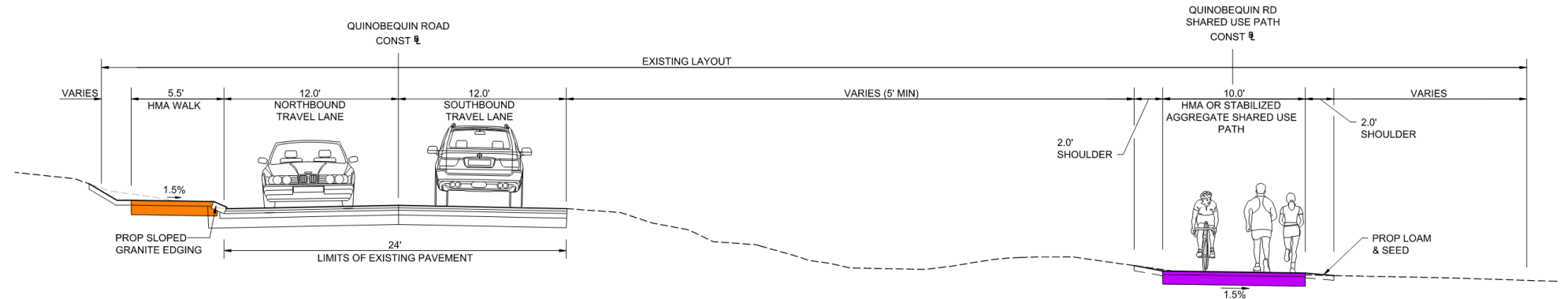
- **What are your top assessment criteria?**
- **What is your preferred alternative and why?**

3 Alternatives: Typical Sections

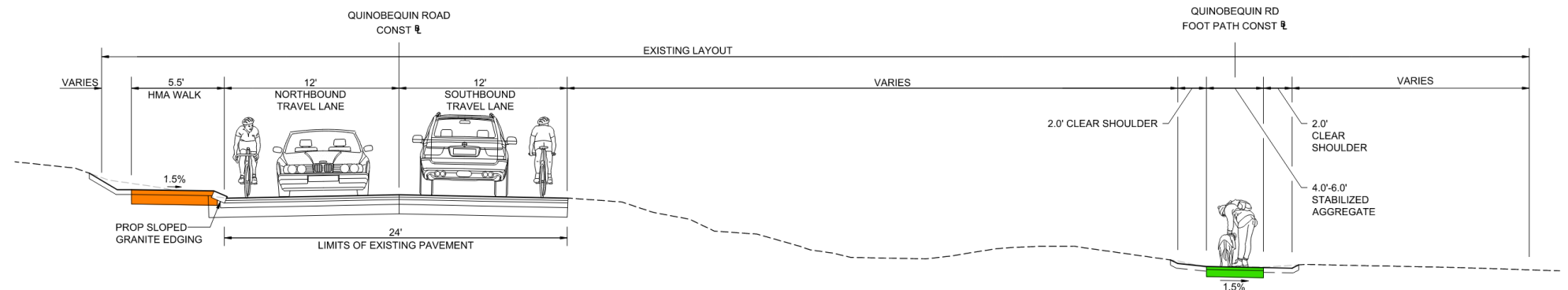
ALTERNATIVE 1 21st-Century Parkway



ALTERNATIVE 2 Charles River Greenway

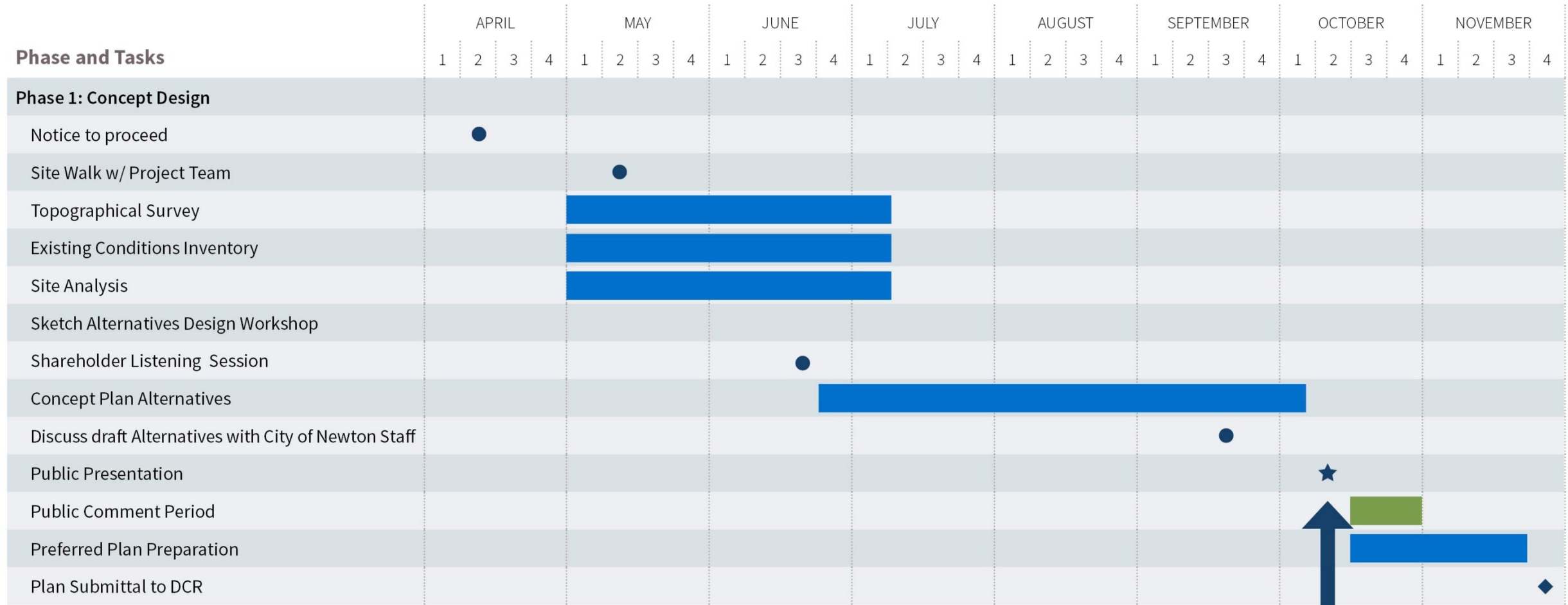


ALTERNATIVE 3 Share the Road





Project Schedule



Consultant Design/ Production/ Coordination



Public Input



Meeting/ Presentation



Tonights Meeting



Deliverable

Additional Information

For more information:

www.mass.gov/dcr/past-public-meetings

www.mass.gov/dcr-projects

If you have comments or suggestions on this project:

Submit online: www.mass.gov/dcr/public-comment

Email: jennifer.norwood@mass.gov

Deadline: Friday, October 23, 2020

Please note that the content of comments you submit to DCR, along with your name, town, and zip code, will be posted on DCR's website. Providing additional contact information when commenting, notably email address, is optional, and will only be used for outreach on future updates on the subject project or property.

Note: If you wish to subscribe to a DCR general information or project-related

listserv: contact DCR's Office of Community Relations at 617-626-4973 or

Mass.Parks@mass.gov.