

# Rail and Transit Report

## Administrator Meredith Slesinger

*February 28, 2024*



# **Table of Contents**

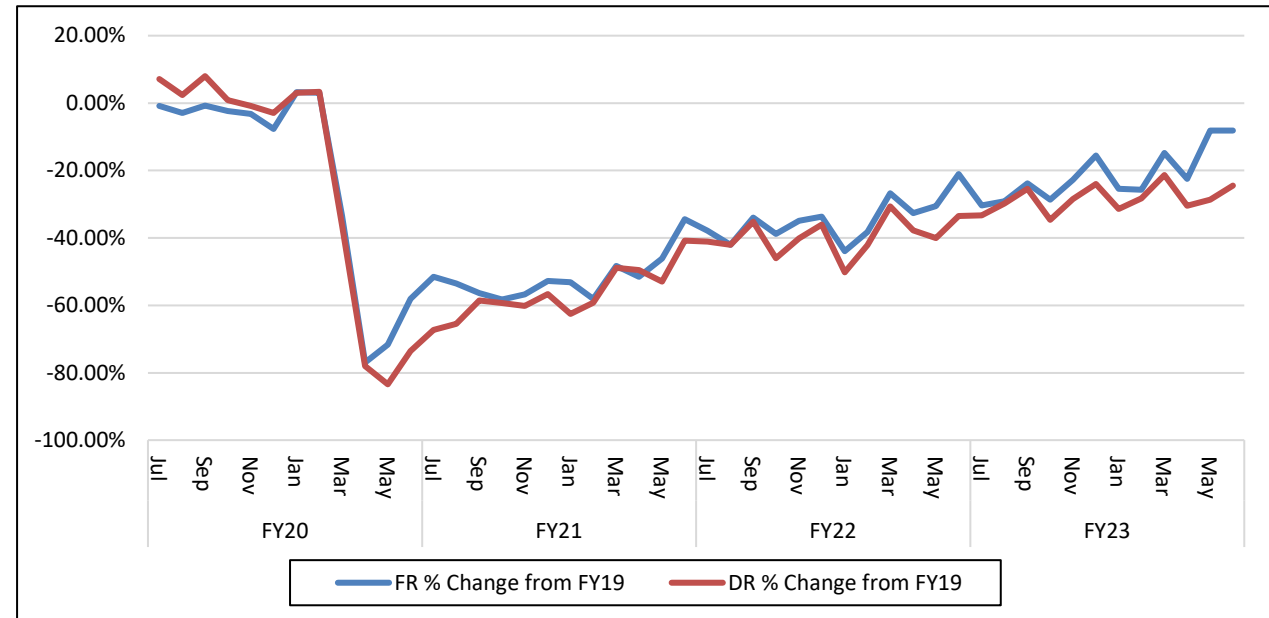
- 3 Regional Transit Authority Performance Management
- 4 Regional Transit Innovation Grant Program
- 5 Regional Mobility Managers
- 6 Compass Rail Ridership

# Regional Transit Authority Performance Management

Annual Report Highlights for State Fiscal Year (SFY) 2023

- Regional Transit Authorities (RTAs) submit performance metrics to RTD. RTD compiles data and develops an annual report.
- Ridership has steadily grown back toward pre-pandemic levels.
- Significant increases funding have provided RTAs with additional resources for service.
- RTAs have continued to make progress in carbon reduction goals by purchasing low or no emission vehicles and upgrading their maintenance facilities.
- In the face of the national trend of transit workforce shortages, the RTAs have implemented creative strategies to retain and recruit workers.

Percent change in SFY2020–SFY2023 annual modal RTA ridership relative to pre-pandemic levels



— Fixed Route  
— Demand Response

# Regional Transit Innovation Grant Program

New MassDOT program generates 60 proposals

4



- \$15M SFY 24 grant program for enhancing, expanding, or implementing new and innovative transit services, including connectivity between rural communities or RTAs, expansion of service hours, electrification, and operating and capital expenses.
- MassDOT solicited proposals from all transit providers.
- Received 60 proposals totaling \$47.5M; \$16.8M total from 24 RTA-submitted projects.
- Review committee will score in February make award recommendations in March.
- Projects may span SFY 24-25.

# Regional Mobility Managers

Would a system of Regional Mobility Managers benefit Massachusetts?



Photo credit: Greater Lynn Senior Services

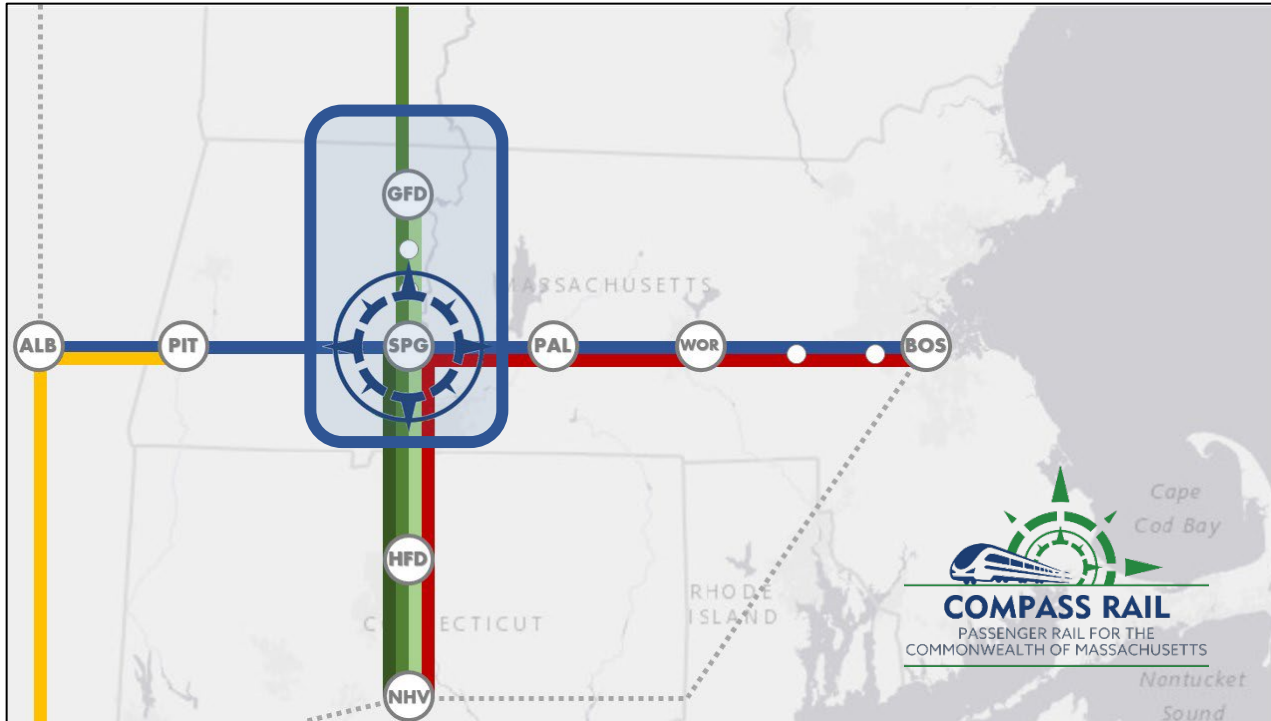


Photo credit: National Aging and Disability Transportation Center

- Regional Mobility Managers (RMMs) help older adults, people with disabilities, and others learn about & learn to use transportation options – and help organizations collaborate to fill transit gaps.
- MassDOT conducted a study to assess whether a statewide system of RMMs would be beneficial for Massachusetts.
- The study learned from other states & interviewed MA practitioners, including RTAs: 60 interviews, 3 focus groups, 1 online survey
- The study concluded that MassDOT should endeavor to implement a RMM system.
- MassDOT has applied for a federal Innovative Coordinated Access and Mobility (ICAM) grant to pursue next steps.

# Compass Rail Ridership

Knowledge Corridor Station Ridership: Oct – Dec 2023



- 57,000 Riders during 3-month period (Oct-Dec. 2023)
- Represents 16% growth over same period last year
- Almost 40% growth over pre-pandemic ridership levels (2019)
- Strong growth seen on intercity trips connecting to New York City
- Second Northeast Regional train, added June 2023, has been very popular

## SERVICES

- Amtrak Vermonter
- Amtrak Valley Flyer
- Amtrak Hartford Line

## STATIONS

- Greenfield
- Northampton
- Holyoke
- Springfield

Thank You

