

Reducing Medium- and Heavy-Duty Vehicle (MHDV) Emissions



Katelyn Leahy Barb

Manager, Transportation
Electrification

Energy New England



Hugh Reece

Senior Program Manager,
Electric Vehicles

National Grid



Jennifer Kritzler

Deputy Director,
Northeast Region

CALSTART



Irina Sidorenko

Project Manager for
Energy & Sustainability

City of Cambridge,
Department of Public
Works



Shahbaz Soofi

Climate Strategy
Manager

Office of Climate Innovation
& Resilience
Massachusetts Port
Authority



**Green Communities +
Leading By Example Summit**



Public Power Utilities & MOR-EV Program

Presented to:

Green Communities & Leading by Example Summit

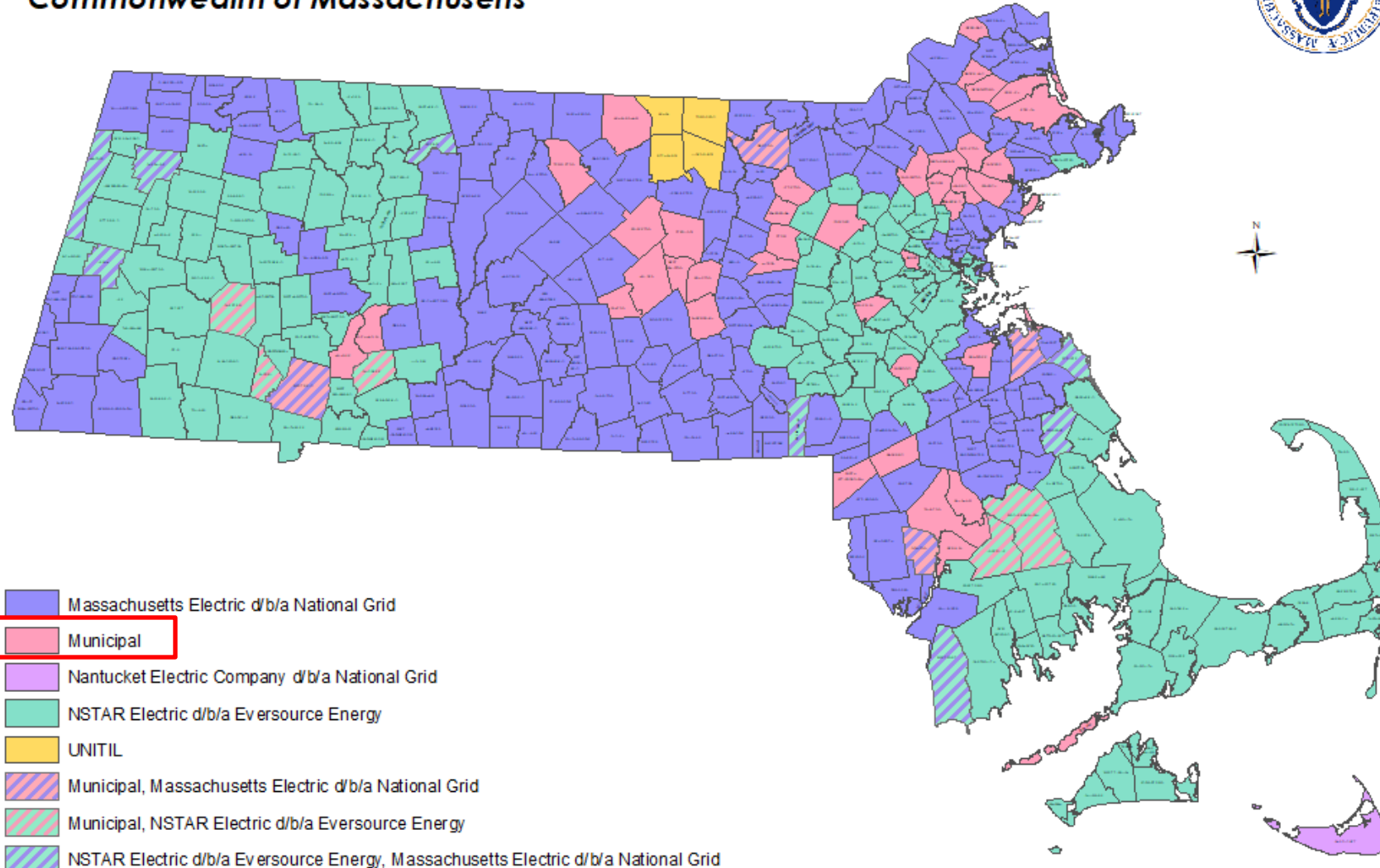
November 18, 2025



Navigating the energy economy.™

Electricity Providers by Municipality

Commonwealth of Massachusetts





Public Power for Public Power: Advancing EV adoption through collaboration and shared services



ENE helps public power utilities build and expand EV programs through education, outreach, incentives, and charging strategies, and exploring ways to support their member communities in this transition.



Navigating the energy economy.™

ENE's EV Advisory Services

Commercial & Fleet EV Programs

- Our team provides direct **advisory support** for commercial customers and municipalities, helping them plan, fund, and implement EV charging and fleet transitions from idea to installation
 - **Charging Infrastructure Planning**
 - **Vendor & Grant Guidance**
 - **Utility Coordination**
 - **Connection to resources**

Public Power Utilities

- **Program design** and templates for rebates, off-peak programs, and education campaigns
- **Research and policy tracking** to ensure programs reflect best practices and regulatory updates
- **Continuous evaluation** & feedback loops to refine and improve programs
- **Training, resources and support for local staff**
- **EV roundtables** to share learnings and trends
- **Technical assistance** for interconnection, charging rates, and demand management

MLPs Reducing Medium- and Heavy-Duty Vehicle (MHDV) Emissions

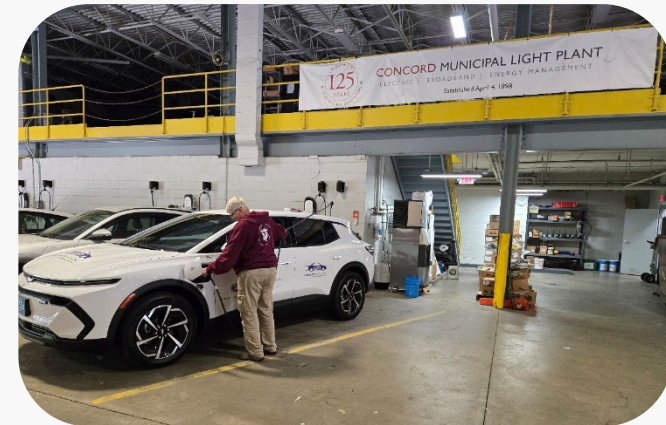
Braintree Electric Light Department (BELD)

- 3 Plug-in Hybrid Electric Bucket Trucks
 - Diesel engine used when driving around
 - When the truck is on location, the hydraulics including the bucket are operated with the **battery for up to 6 hours**
 - This cuts the trucks **emissions** and **noise** being emitted by other trucks that have the diesel running all the time
- Other EVs in the fleet



Concord Municipal Light Plant (CMLP)

- Current fleet now includes: 4 EVs, 3 gasoline hybrids, 11 gasoline-powered vehicles, & 18 diesel-powered vehicles (including off-road and trailered equipment)



MLPs Supporting Reduction of Medium- and Heavy-Duty Vehicle (MHDV) Emissions

- **Rebate** programs offered to commercial customers installing L2 EV Charging
 - Braintree Electric Light Department (BELD)
 - Concord Municipal Light Plant (CMLP)
 - Hingham Municipal Light Plant (HMLP)
 - Norwood Municipal Light Department (NMLD)
- ENE making connections with vendors on behalf of utilities – **early and often communication** about projects
- **Community Collaboration**
 - Concord involved in **MassCEC V2X** Program for school buses
 - Multiple MLPs supporting charging stations and infrastructure development for public or privately owned fleets, including electric school buses
- **Owned Chargers**
 - Wellesley Municipal Light Plant (WMLP) owns & operates DCFC stations – quick install!



MOR-EV Rebates for purchase of EVs



Center for
Sustainable
Energy®



MOR-EV

Massachusetts Offers Rebates
for Electric Vehicles



ENE
ENERGY NEW ENGLAND

MOR-EV REBATE CATEGORIES



**PLEASE NOTE:
MOR-EV IS A
REBATE, NOT A TAX
CREDIT**


	Available at point of sale	Rebate available post purchase	Rebate Amount
MOR-EV Standard	YES	YES	\$3,500
MOR-EV Used	YES (with voucher)	YES	\$3,500
MOR-EV +	YES (with voucher)	YES	\$1,500
MOR-EV Trade-In	No	YES	\$1,000
MOR-EV Trucks, Pick Ups, and Class 2b vehicles	No	YES	\$7,500
MOR-EV Trucks Class 3-8 vehicles	No	YES (requires rebate reservation voucher prior to taking delivery)	\$15,000 - \$90,000

MOR-EV Trucks

- **\$7,500 rebate available** after purchase or lease
- Pickup trucks 6,000–10,000 pounds GVWR
- All other body types 8,501–10,000 pounds GVWR
- **Maximum \$80,000 total MSRP**
- Minimum lease term or vehicle retention period: 36 months



MOR-EV Medium-/Heavy-Duty (Class 3–8) Rebates

- **\$15,000–\$90,000 rebate** depending on GVWR over 10,000 pounds 
- All applicants must apply for **Rebate Reservation Voucher** before claiming the rebate
- Declining block structure: after 200 rebates reserved in collective Block 1, value of rebates declines by 15%
- 10% rebate adder if registered or operating in an EJC
- **Maximum \$2M total MSRP**
- Minimum lease term or vehicle retention period: 48 months

Vehicle Class	GVWR (lbs.)	Block 1 Incentive Amount
3	10,001–14,000	\$15,000
4	14,001–16,000	\$30,000
5	16,001–19,500	\$45,000
6	19,501–26,000	\$60,000
7	26,001–33,000	\$75,000
8	33,001+	\$90,000

Let's Collaborate

Katelyn Leahy Barb (she/her) CEM, CEA
Manager, Transportation Electrification
Energy New England

Email: k Leahy Barb@ene.org

Phone: 508-698-1228

Linkedin: [linkedin.com/in/katelynleahy](https://www.linkedin.com/in/katelynleahy)



ENE Drives Electric

