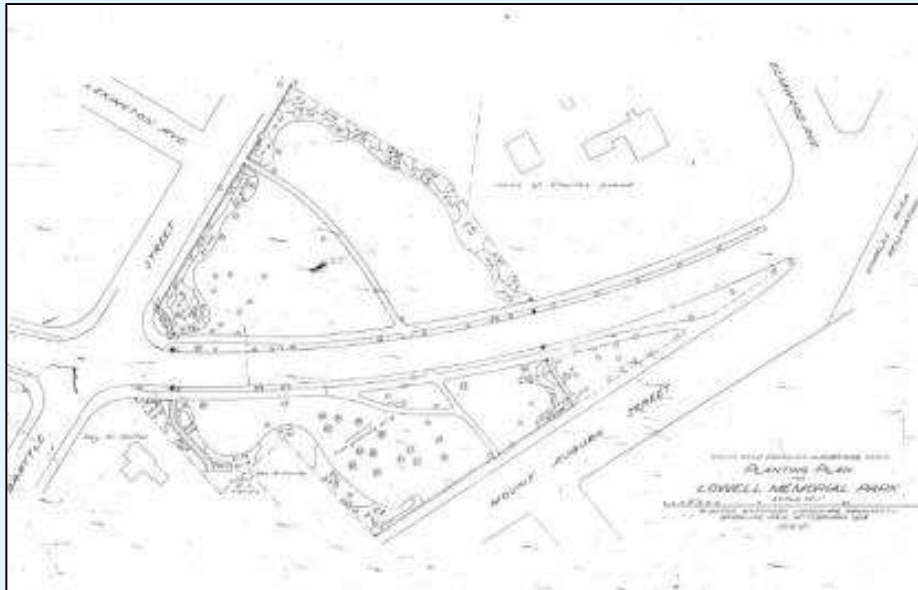


Lowell Memorial Park

Historic Landscape Rehabilitation

30% Design Presentation

October 21, 2019





Commonwealth of Massachusetts

Governor

Charles D. Baker

Lt Governor

Karyn E. Polito

Energy and Environmental Secretary

Kathleen A. Theoharides

Department of Conservation and Recreation Acting Commissioner

Jim Montgomery

The background of the slide is a photograph of a vast, hazy landscape. In the foreground, there are dark, dense evergreen trees. Beyond them, rolling hills and mountain ranges are visible, their details softened by atmospheric haze. The sky at the top is bright and pale, suggesting a sunrise or sunset. The overall tone is serene and natural.

DCR Mission

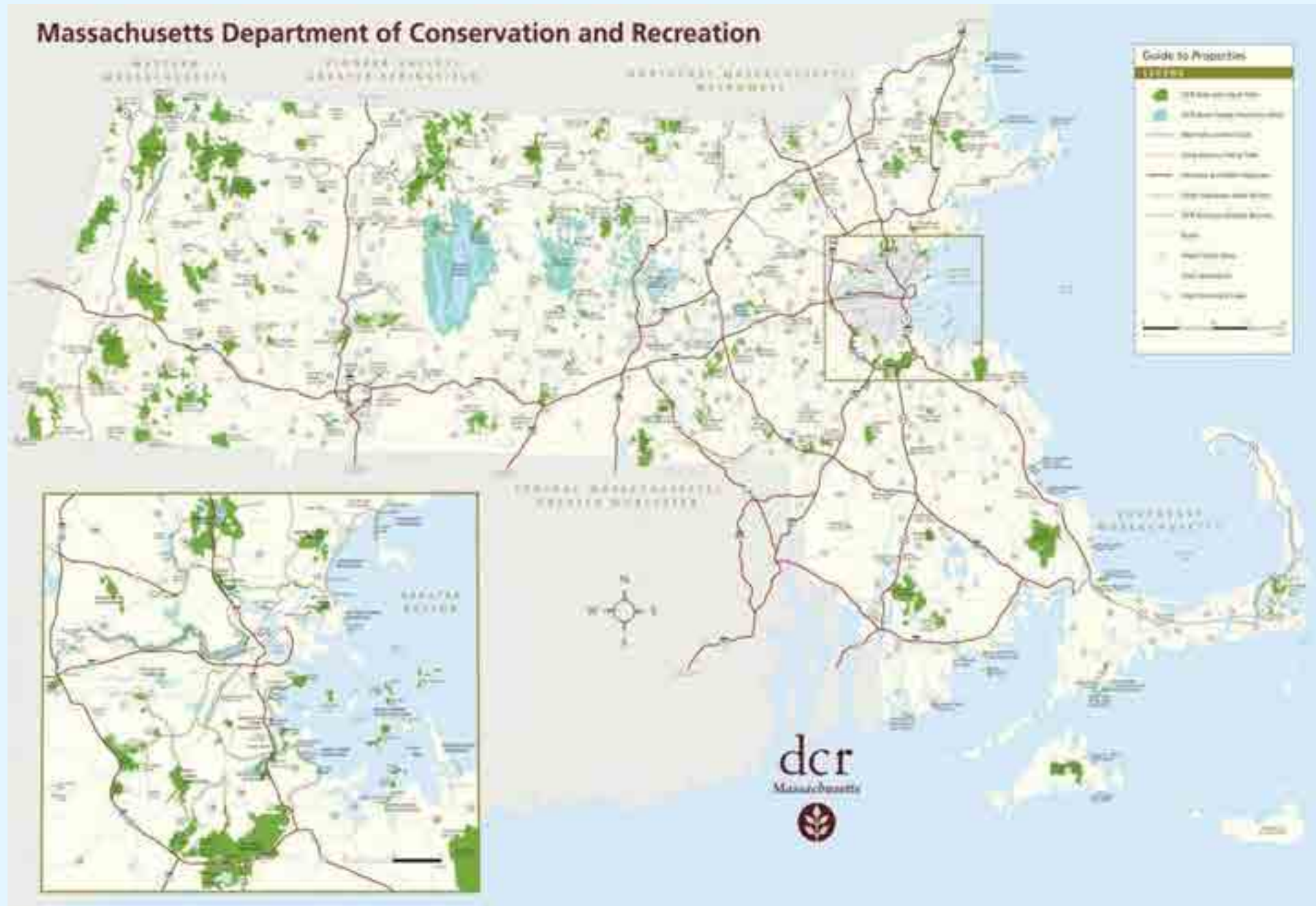
*To protect, promote and enhance
our common wealth of natural,
cultural and recreational resources
for the well-being of all.*

Purpose of the Meeting

- Overview
- Presentation of 30% design for landscape rehabilitation
- Discussion and public comments



Massachusetts Department of Conservation and Recreation



America's First Regional Park System

- **June 3, 1893 Metropolitan Park System created.**
- **First parks:**
- Waverly Oaks (Beaver Brook), Belmont
- Blue Hills, Milton
- Middlesex Fells, Stoneham
- **1894 authorization to build parkways**
- 1898 Lowell Memorial Park acquired as first part of Fresh Pond Parkway
- By 1903 9,246 acres acquired

Waverley Oaks, Belmont



1901 Map of the Metropolitan Parks System

Lowell Memorial Park

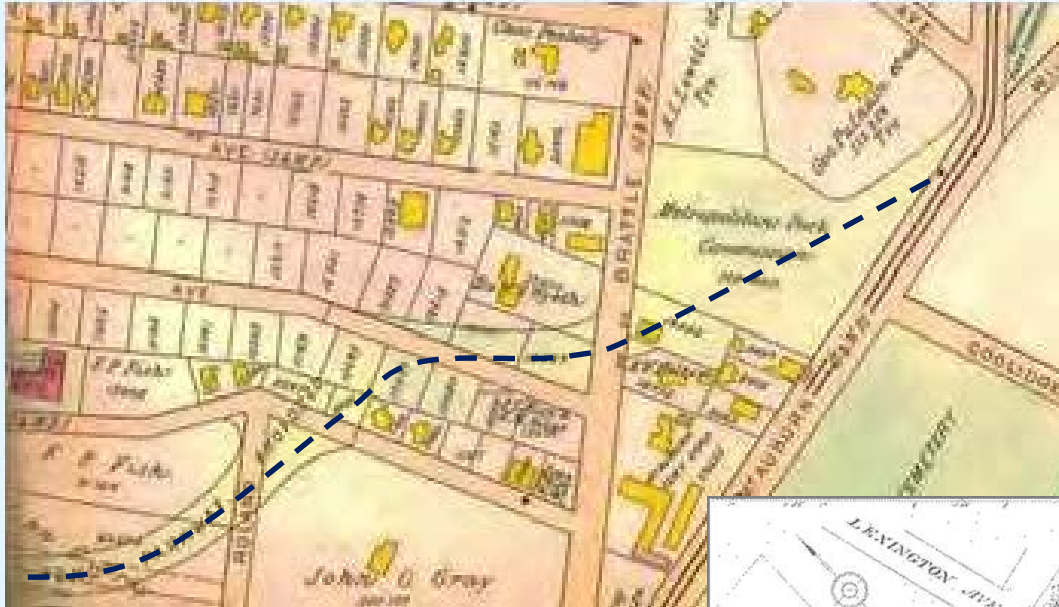
James Russell Lowell
(1819-1891)

- Fireside Poet
- Abolitionist
- Ambassador

Lowell's family
home Elmwood
is a National
Historic
Landmark

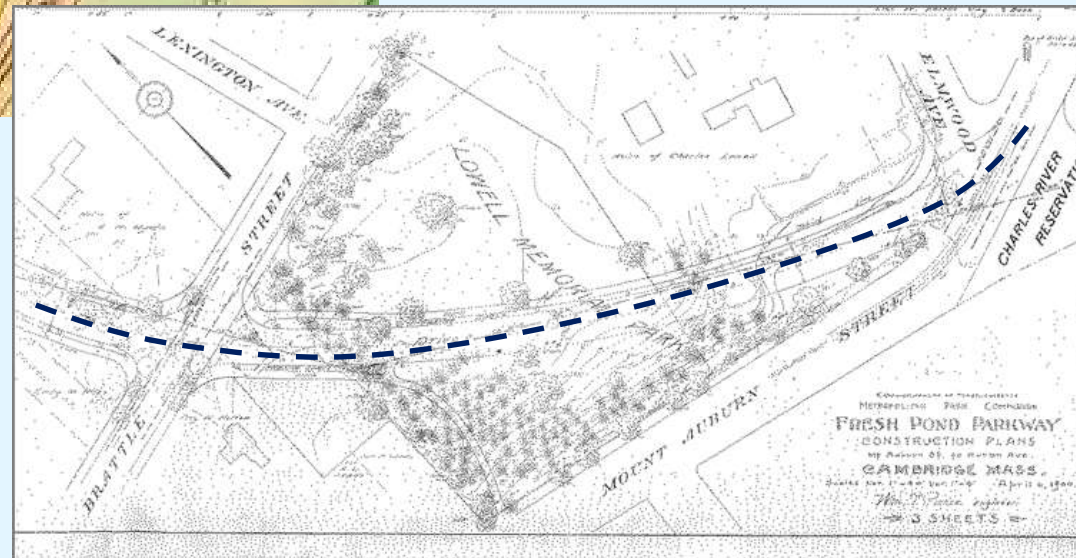


Laying Out the Parkway



1900 Atlas of Middlesex County showing proposed layout for Fresh Pond Parkway (courtesy Cambridge Historical Commission)

1900 Fresh Pond Parkway Construction Plans, Metropolitan Park Commission



Designing the Park



Olmsted Brothers

Project Background

- 2012 DCR listening session
- 2014 Public Meeting
 - Cultural landscape Report
 - Wall Assessment
- 2015 Mt Auburn/Fresh Pond Parkway Traffic Study
- 2016 Wall Repairs in Big Lowell
- 2019 Partnership grant with City of Cambridge for Landscape Rehab Design (KZLA hired)





DEPT. OF CONSERVATION & RECREATION
LOWELL MEMORIAL PARK

30% CONSTRUCTION DESIGN
RECOMMENDATIONS 21 OCTOBER 2019

kzla

STUDIES

LAST MEETING SUMMARY

MOUNT AUBURN STREET

- LONG-TERM

30% CONSTRUCTION PLANS

- RESTORATION
- WALLS
- WALKWAYS
- ACCESSIBILITY
- PLANTING
- SITE LIGHTING
- SITE AMENITIES

NEXT STEPS





DEPT. OF CONSERVATION & RECREATION
LOWELL MEMORIAL PARK

MT. AUBURN STREET CORRIDOR
STUDY: LONG-TERM
DCR

MAY 2018

kzla

LAST MEETING REVIEW

VIEWS

WALKWAYS

- ACCESSIBILITY
- SIDEWALKS

WALLS & PIERS

- WALL ALIGNMENTS

VEGETATION

- 1906 OLMSTED PLANTING PLAN & PALETTE
- 1906 PLANTING VS. TODAY SPECIES & MASSING
- TREE REMOVALS
- TREE PLANTINGS
- SHRUB PLANTINGS
- INVASIVE SPECIES

SITE AMENITIES

MISCELLANEOUS SITE CONDITIONS

PUBLIC COMMENT

WALKWAYS

- LITTLE LOWELL WALKWAY:
 - ALTERNATIVE 3 IS FUNCTIONAL, ATTRACTIVE, FITS WITH PARK SETTING, & WITH MINIMAL NEW INFRASTRUCTURE
 - ALTERNATIVE 3 DOES NOT REQUIRE CHANGING THE ENTRYWAY OR THE WALL ITSELF
 - ALTERNATIVE 3 DOES NOT REQUIRE MOVING THE CROSSWALK
- CAN WE WIDEN SIDEWALK ON MOUNT AUBURN STREET?

VEGETATION

- PLEASE DO EVERYTHING POSSIBLE TO SAVE THE ANCIENT MAPLE
- COMMEMORATE THE ANCIENT MAPLE WHEN IT DOES NEED TO BE REMOVED
- PERIMETER PLANTINGS IN BIG LOWELL CAN BE PROBLEMATIC

SITE AMENITIES

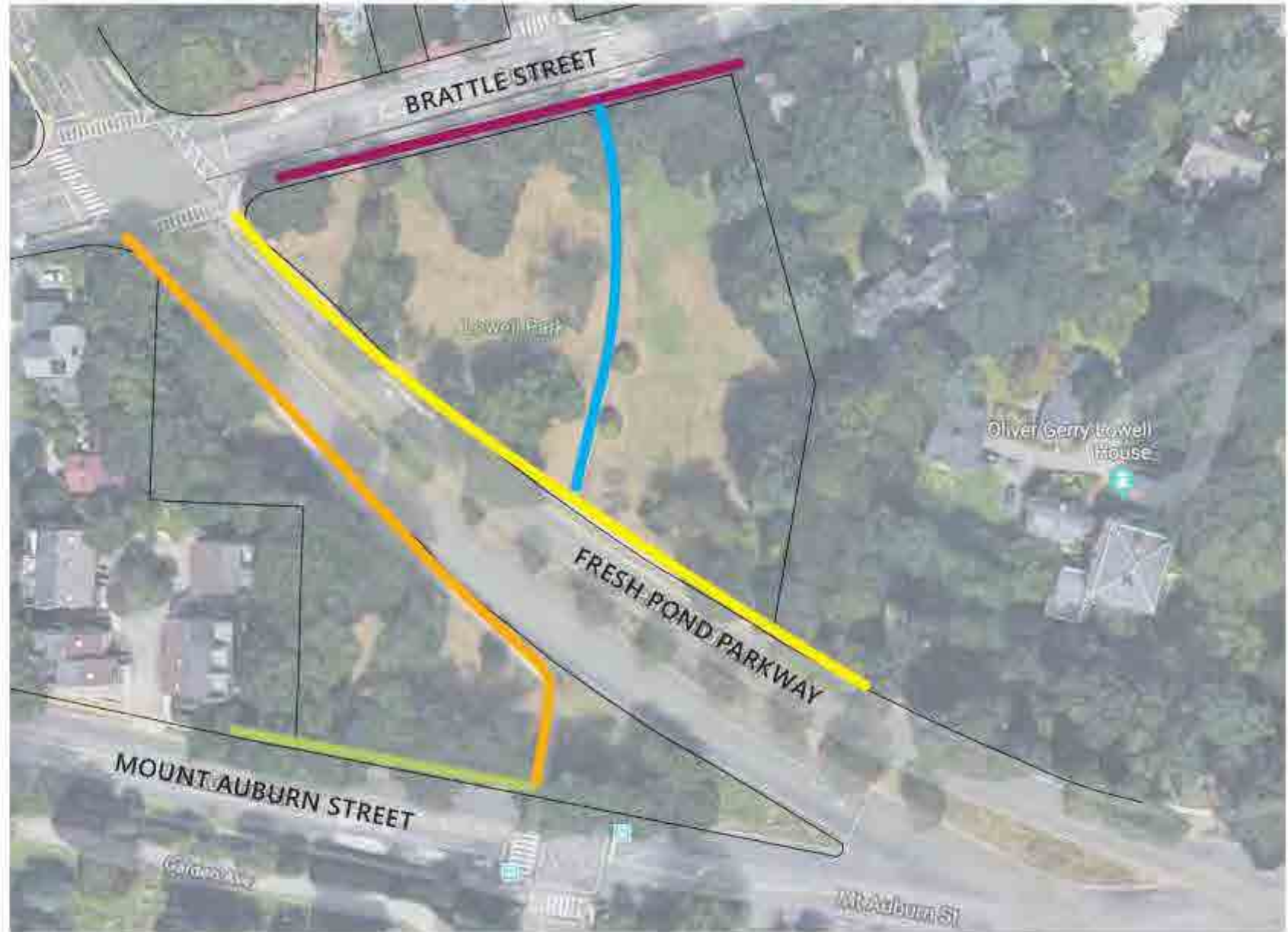
- REQUEST FOR A LOW FENCE SEPARATING THE PARK FROM FRESH POND PARKWAY
- RECONSIDER THE AMOUNT OF BENCHES: MORE IN BIG LOWELL & FEWER IN LITTLE LOWELL
- CONSIDER SITE LIGHTING LEVELS WITH CONCERN TO ABUTTERS

MISCELLANEOUS

- THE PARK JUST NEEDS MORE CARE & ATTENTION

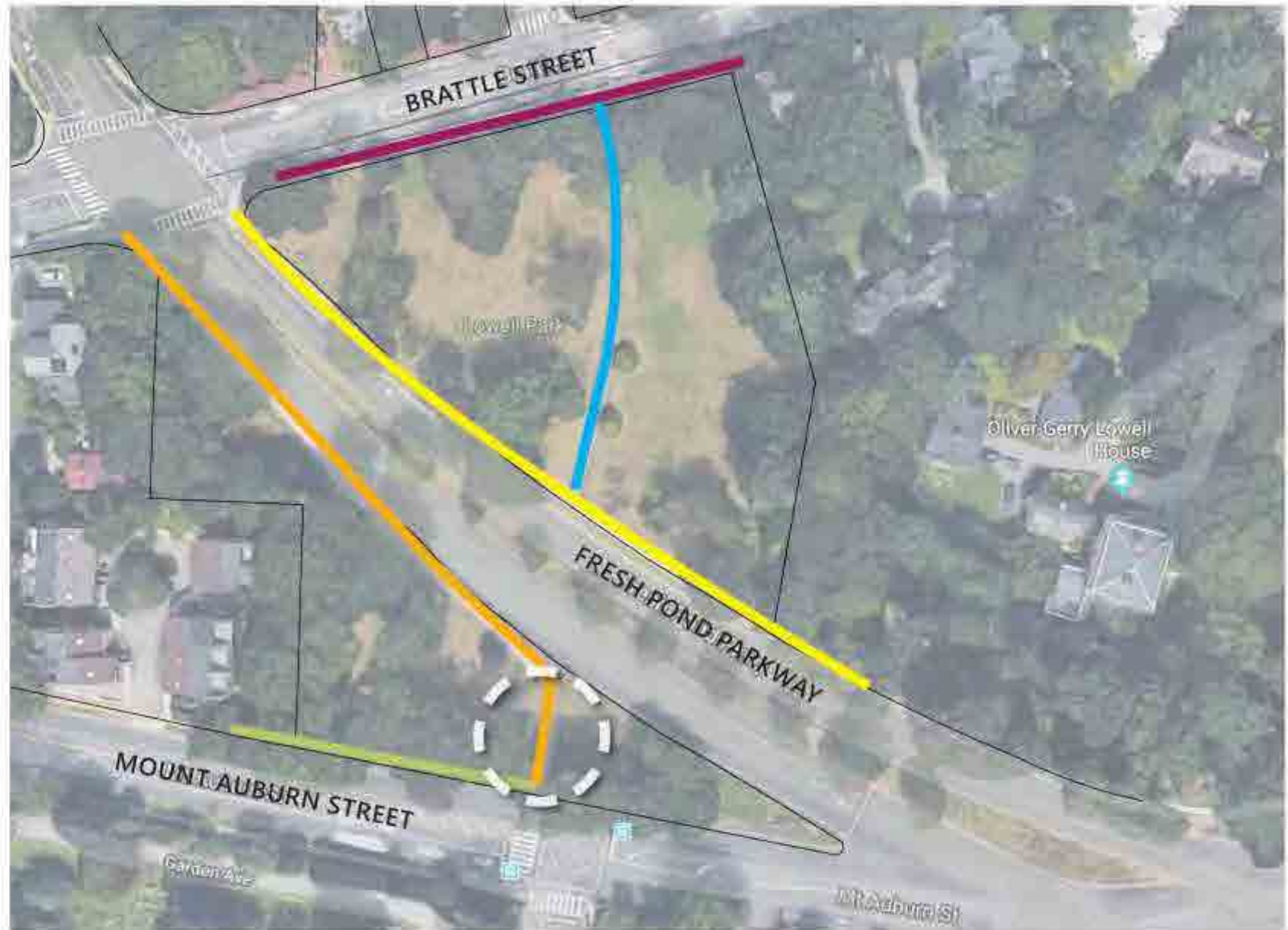
RECOMMENDATIONS

-  BIG LOWELL
INTERNAL PATHWAY:
 - WIDEN TO 60"
 - CONCRETE
-  BIG LOWELL
PARKWAY SIDEWALK:
 - ENSURE CLEARANCE OF 72"
 - CONCRETE
-  LITTLE LOWELL
PARKWAY SIDEWALK/
INTERNAL PATHWAY:
 - WIDEN TO 72"
 - CONCRETE
-  MOUNT AUBURN
SIDEWALK:
 - NO IMPROVEMENTS
-  BRATTLE STREET
SIDEWALK:
 - NO IMPROVEMENTS



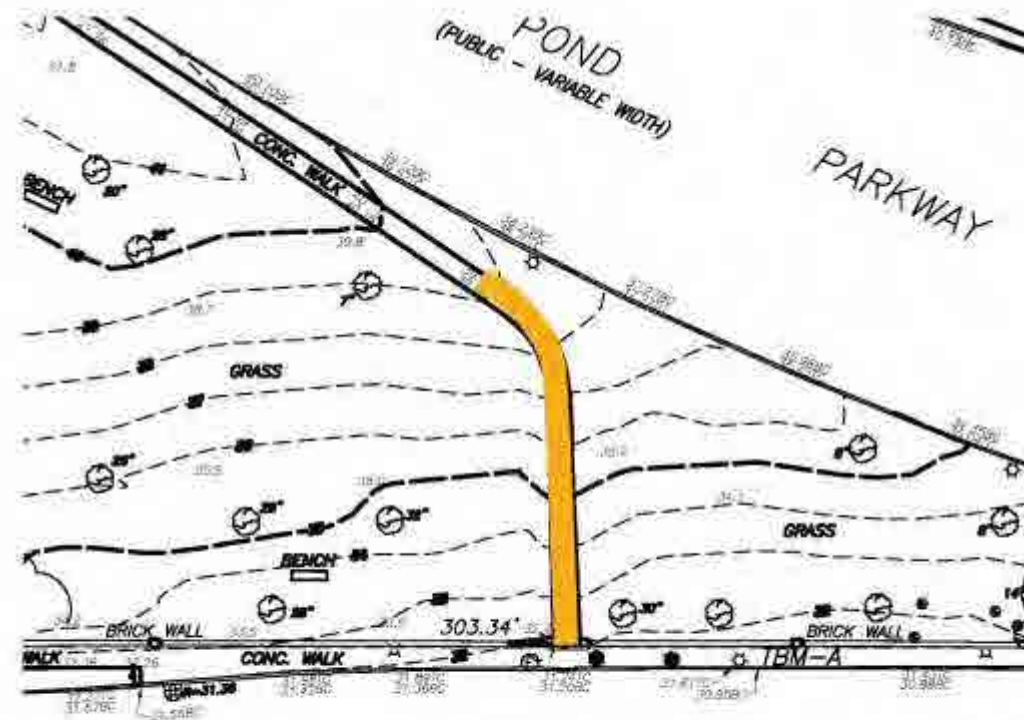
RECOMMENDATIONS

-  BIG LOWELL
INTERNAL PATHWAY:
 - WIDEN TO 60"
 - CONCRETE
-  BIG LOWELL
PARKWAY SIDEWALK:
 - ENSURE CLEARANCE
OF 72"
 - CONCRETE
-  LITTLE LOWELL
PARKWAY SIDEWALK/
INTERNAL PATHWAY:
 - WIDEN TO 72"
 - CONCRETE
-  MOUNT AUBURN
SIDEWALK:
 - NO IMPROVEMENTS
-  BRATTLE STREET
SIDEWALK:
 - NO IMPROVEMENTS





WALKWAY THROUGH LITTLE LOWELL



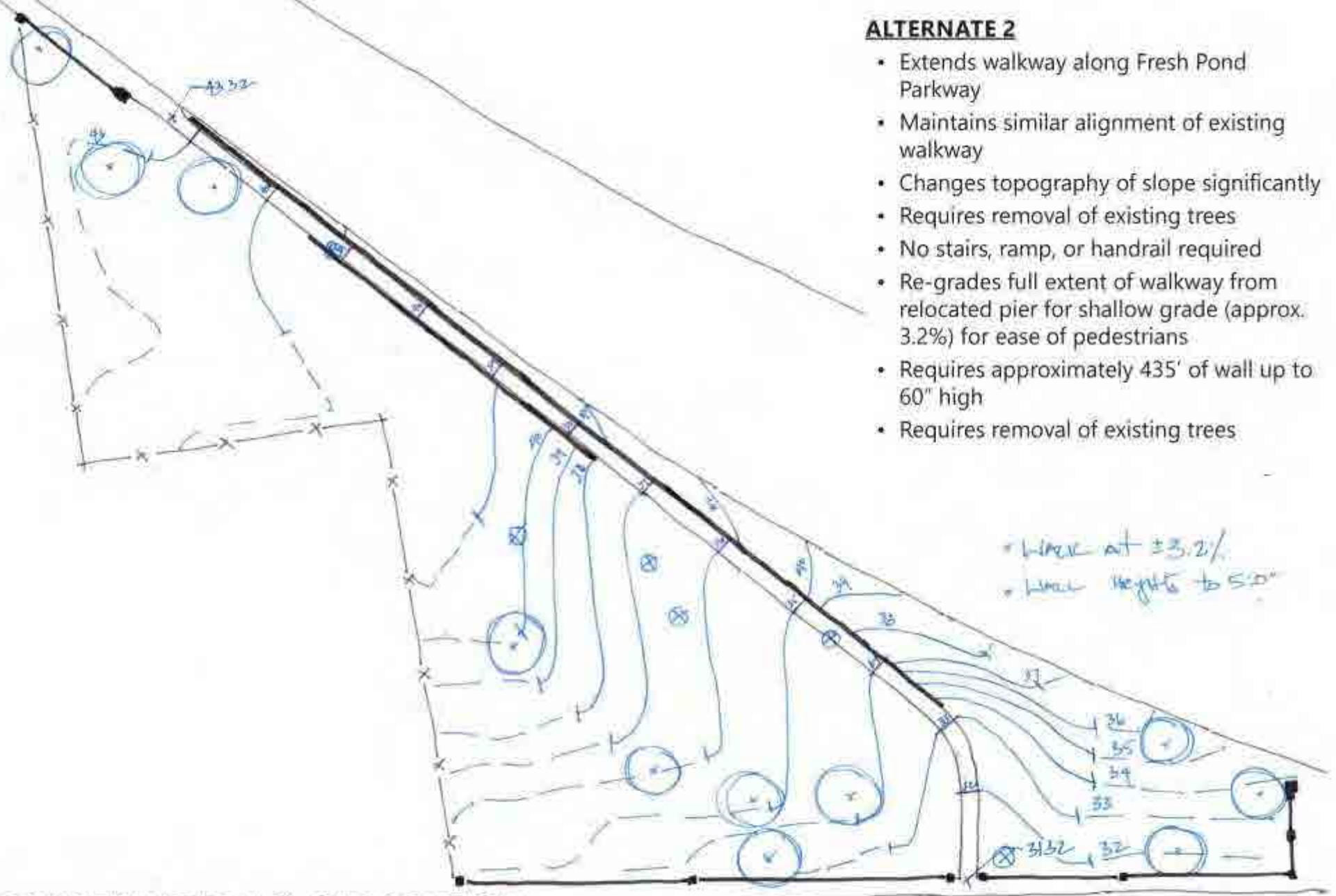
EXISTING CONDITIONS SURVEY

GOALS FOR NEW WALKWAY

- Create a universally accessible walkway from Brattle Street to mount Auburn Street
- Remove as few existing trees as possible
- Reduce impact/changes to historic brick wall
- Create a walkway that is maintainable for DCR Operations (Level 1 Priority for snow removal)
- Create a walkway that is sensitive to the historic context of the park



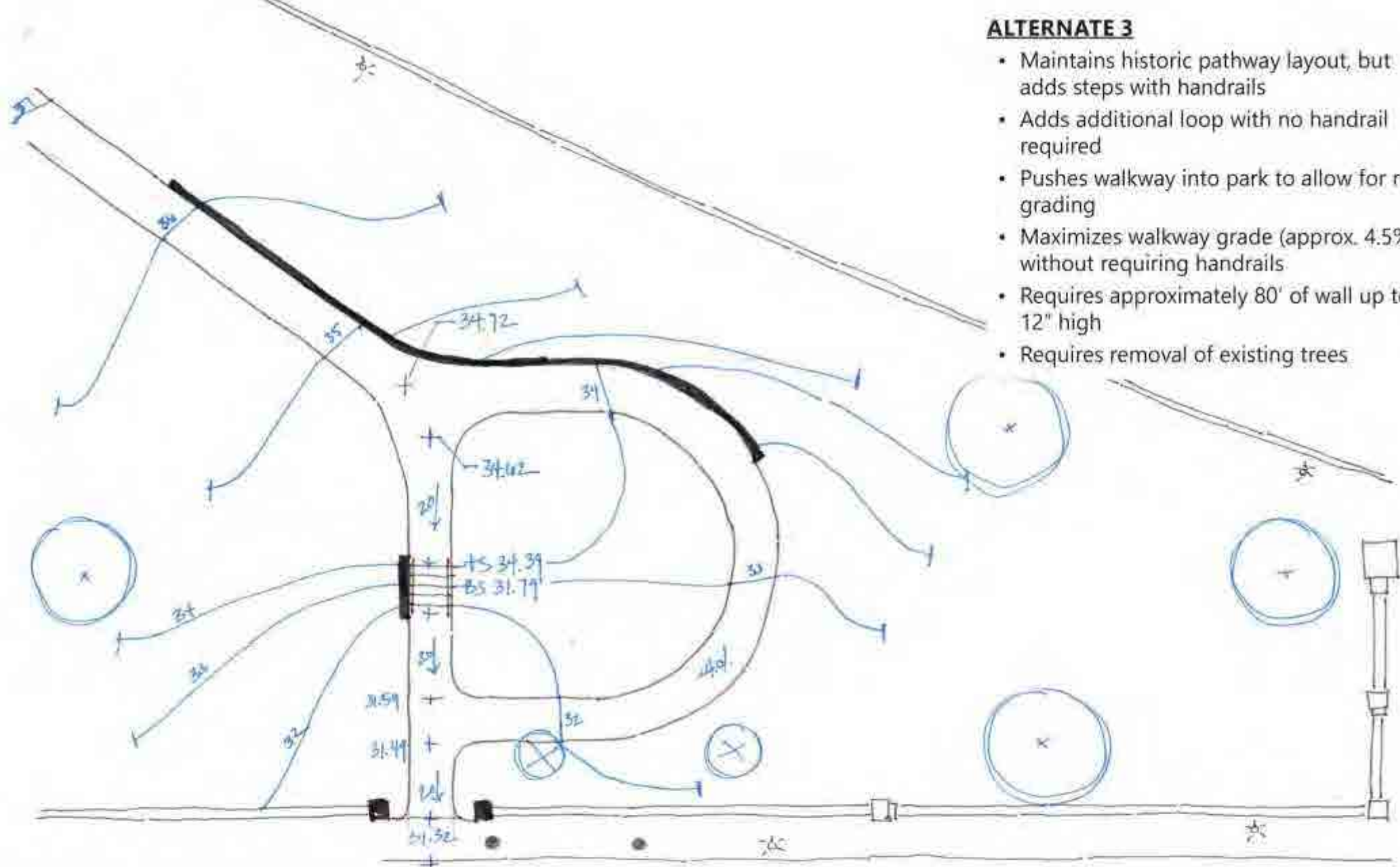
- Extends pathway alignment along Parkway
- Maximizes slopes with ramps (8.0%) to shorten pathway length (with handrails)
- Maintains topography of slope
- Requires break in existing brick wall on Mount Auburn Street
- Requires handrails
- Maintains historic pathway layout, but adds steps & handrails



ALTERNATE 2

- Extends walkway along Fresh Pond Parkway
- Maintains similar alignment of existing walkway
- Changes topography of slope significantly
- Requires removal of existing trees
- No stairs, ramp, or handrail required
- Re-grades full extent of walkway from relocated pier for shallow grade (approx. 3.2%) for ease of pedestrians
- Requires approximately 435' of wall up to 60" high
- Requires removal of existing trees

• Wall at $\pm 3.2\%$
• Wall height to 5.0'

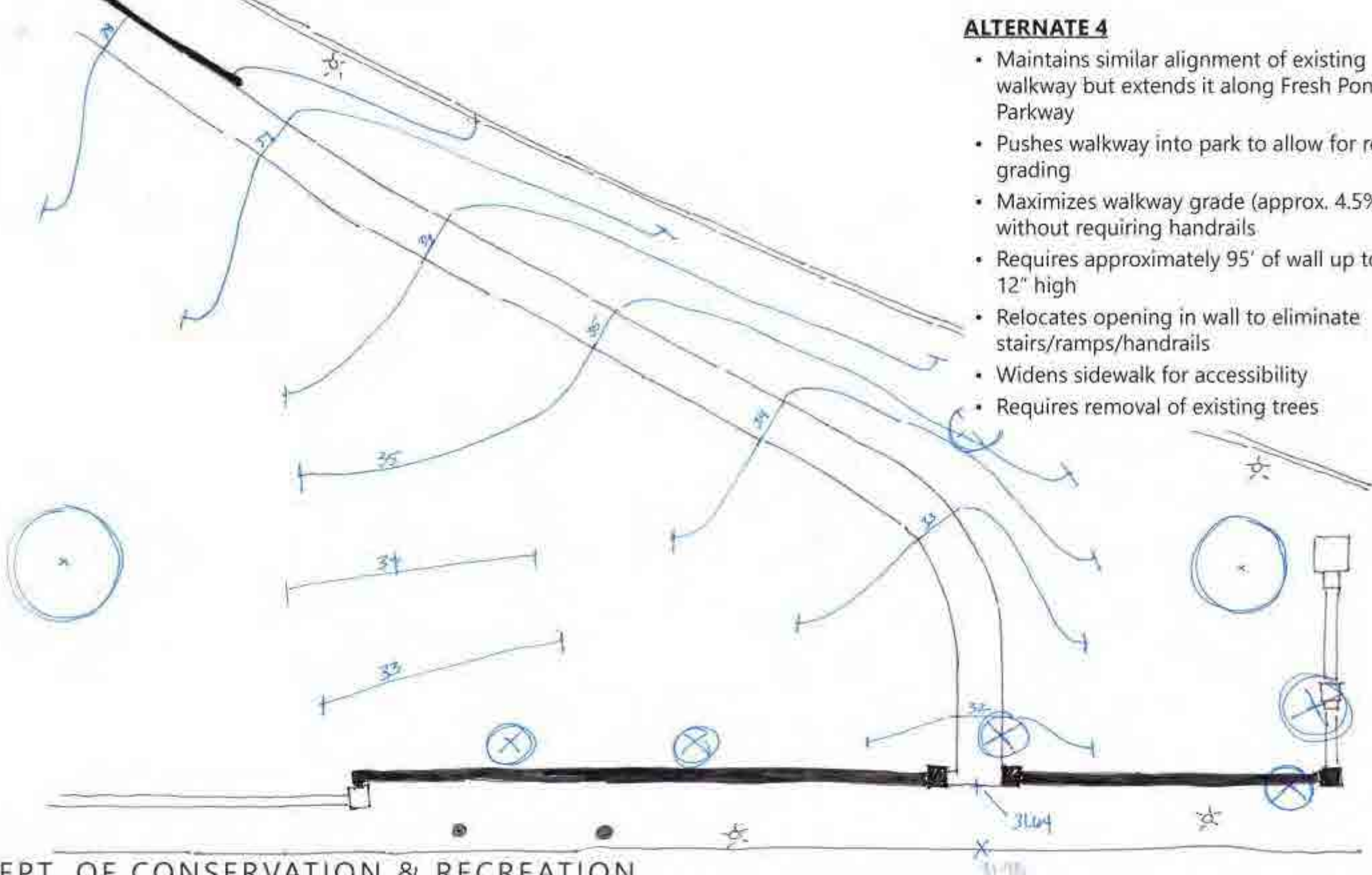


ALTERNATE 3

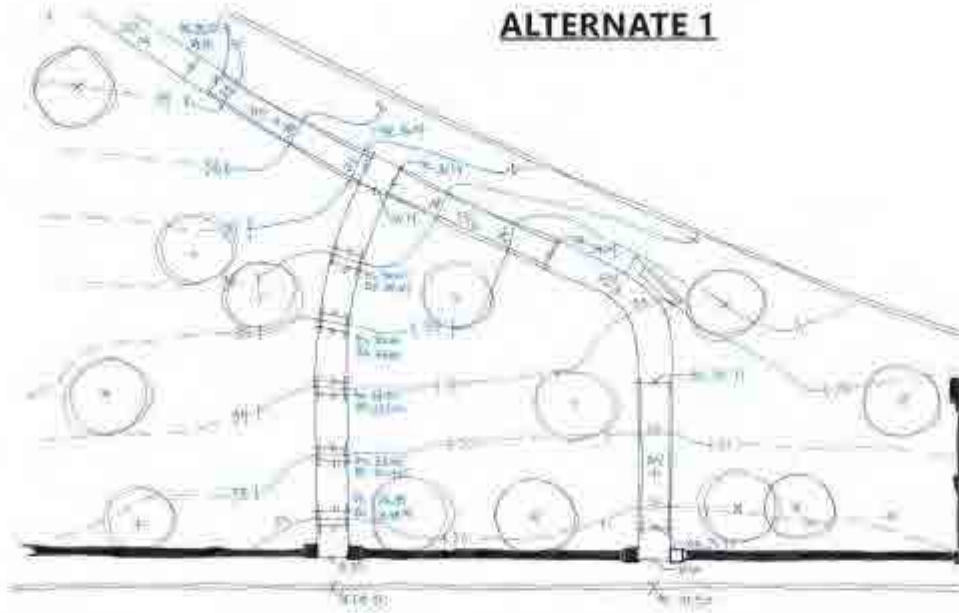
- Maintains historic pathway layout, but adds steps with handrails
- Adds additional loop with no handrail required
- Pushes walkway into park to allow for re-grading
- Maximizes walkway grade (approx. 4.5%) without requiring handrails
- Requires approximately 80' of wall up to 12" high
- Requires removal of existing trees

ALTERNATE 4

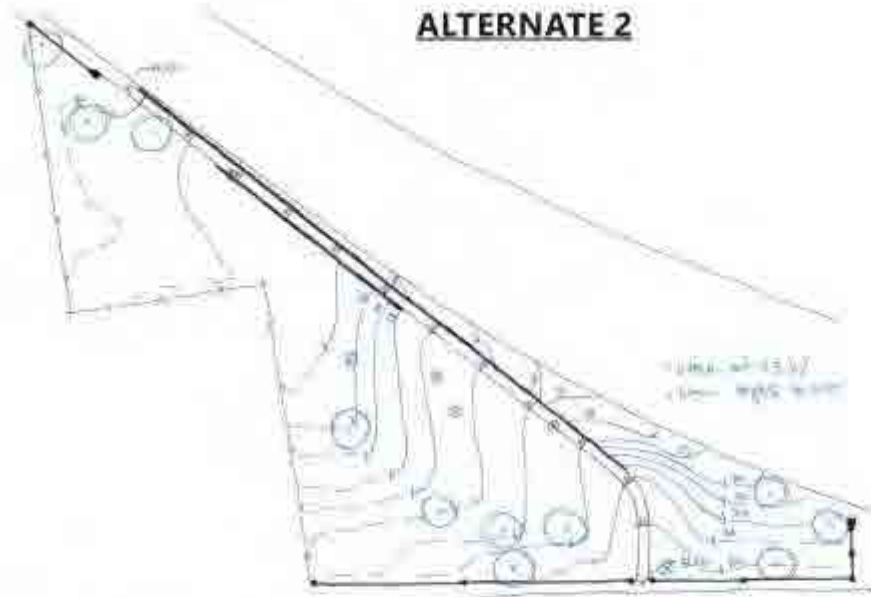
- Maintains similar alignment of existing walkway but extends it along Fresh Pond Parkway
- Pushes walkway into park to allow for re-grading
- Maximizes walkway grade (approx. 4.5%) without requiring handrails
- Requires approximately 95' of wall up to 12" high
- Relocates opening in wall to eliminate stairs/ramps/handrails
- Widens sidewalk for accessibility
- Requires removal of existing trees



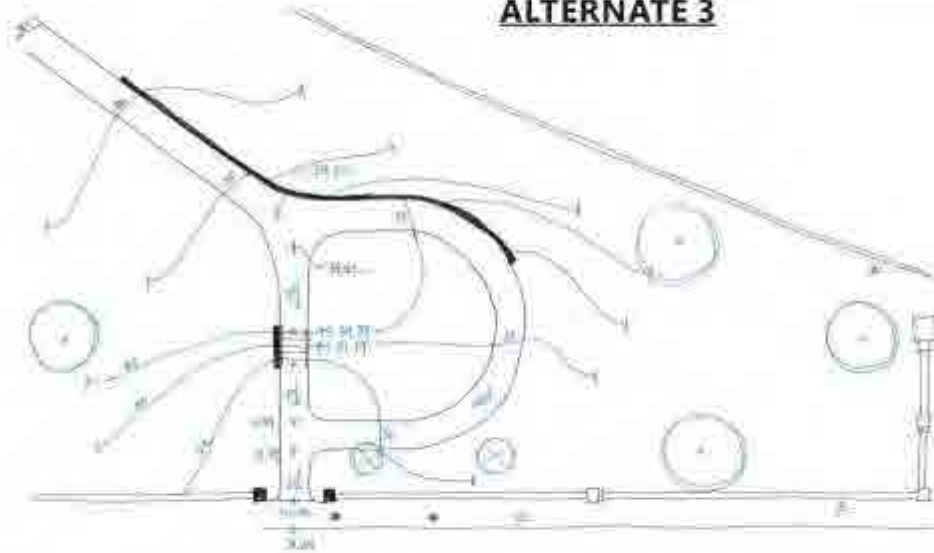
ALTERNATE 1



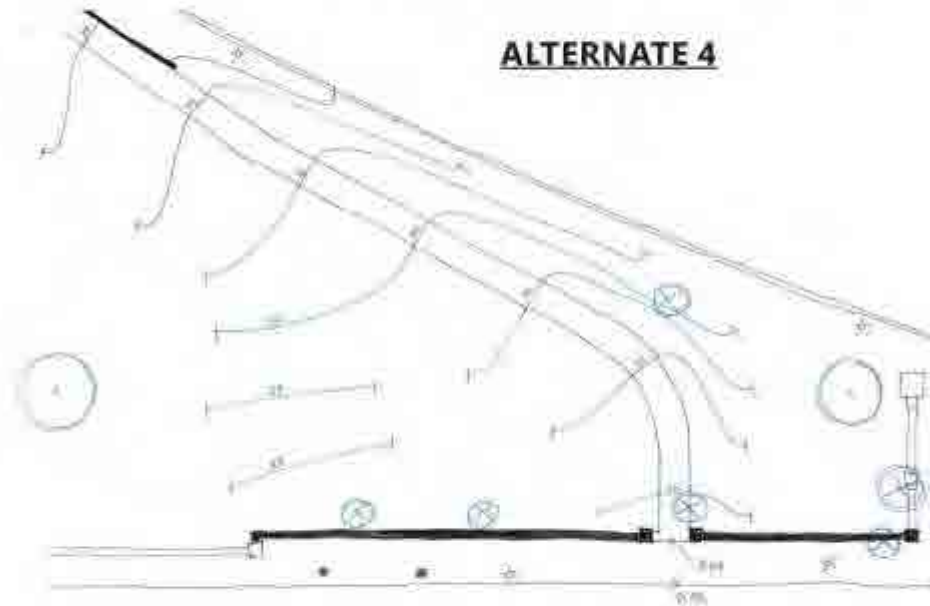
ALTERNATE 2



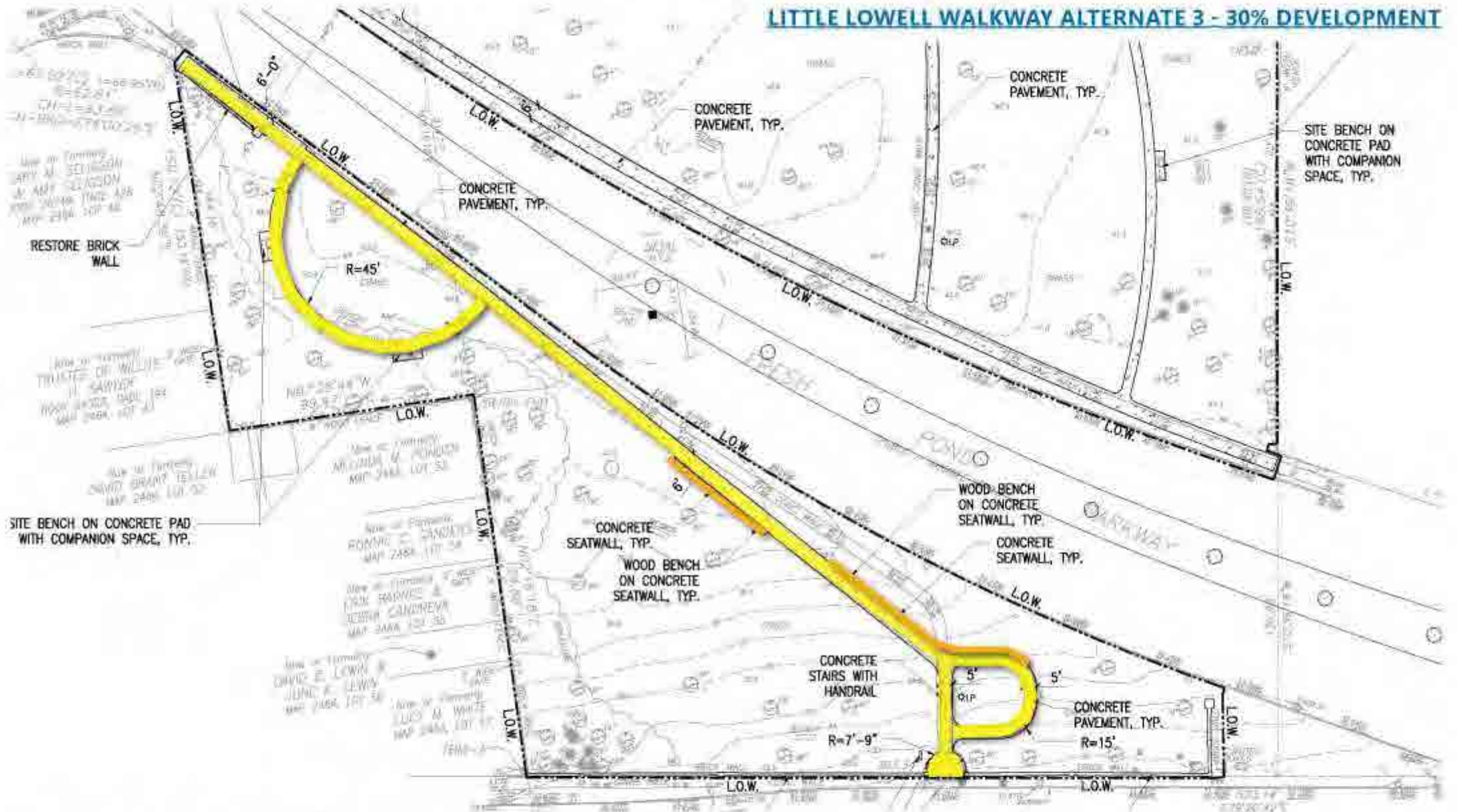
ALTERNATE 3



ALTERNATE 4



LITTLE LOWELL WALKWAY ALTERNATE 3 - 30% DEVELOPMENT



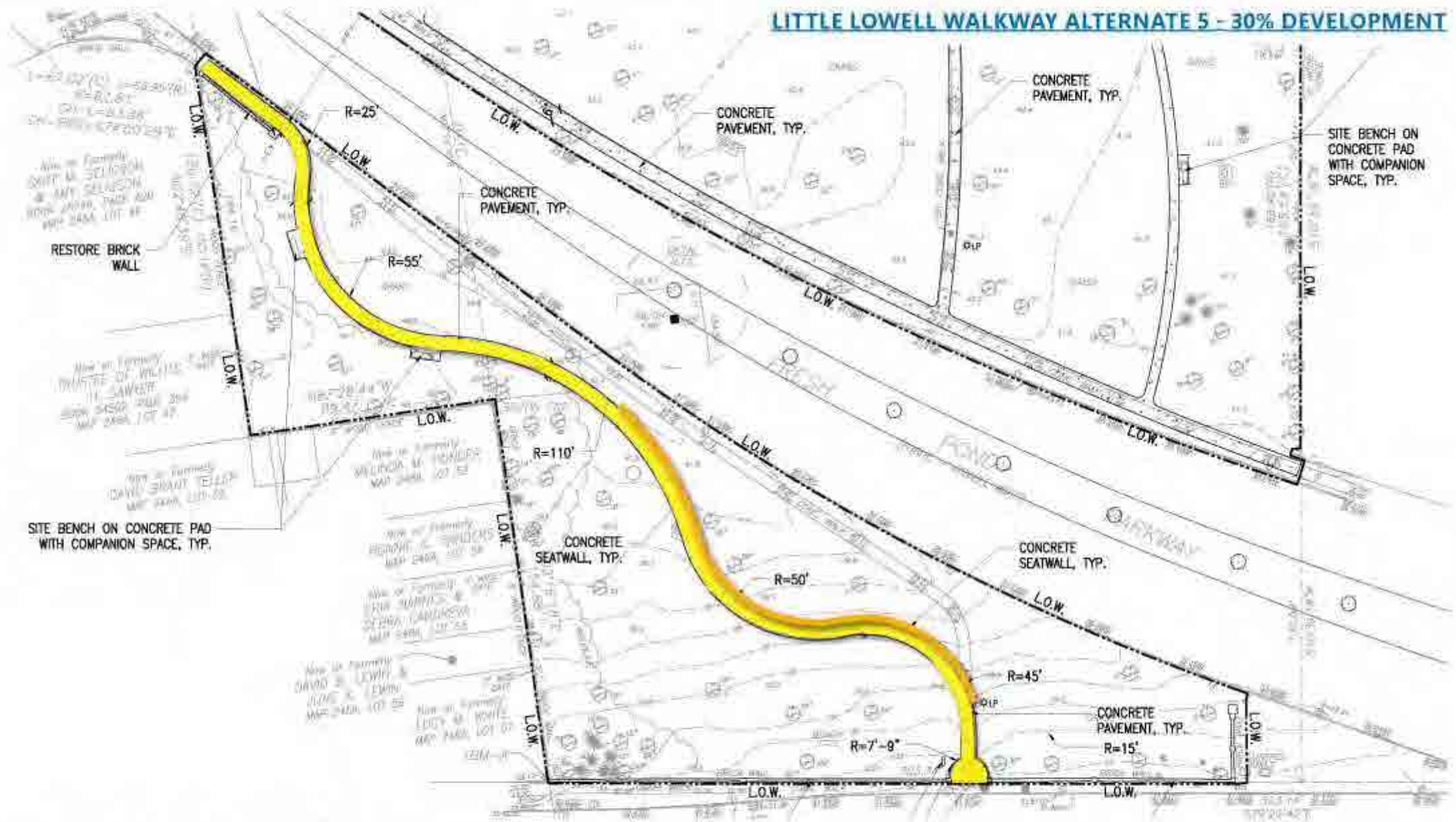
DEPT. OF CONSERVATION & RECREATION
LOWELL MEMORIAL PARK

30% CONSTRUCTION DESIGN

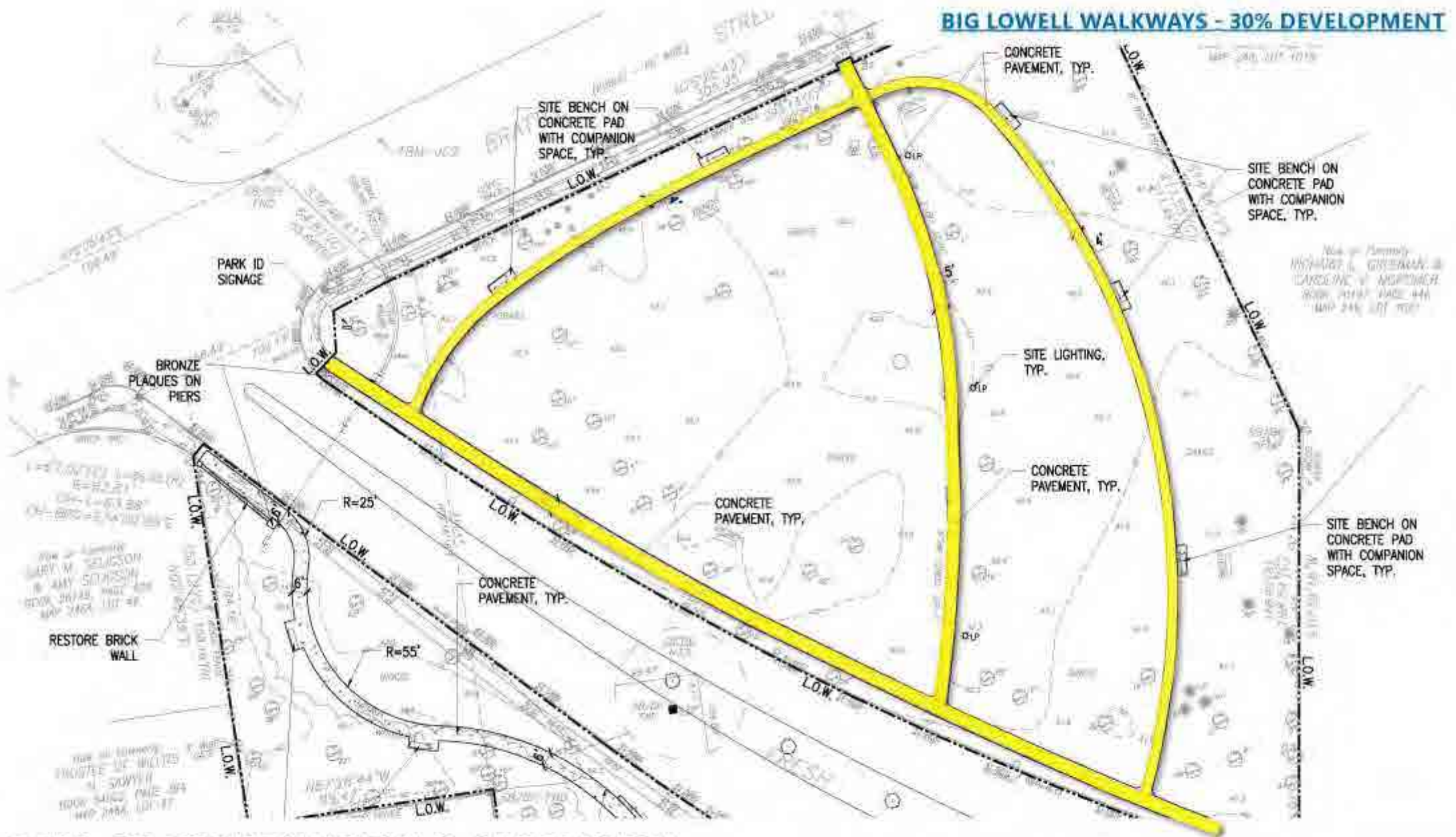
RECOMMENDATIONS 21 OCTOBER 2019

kzla

LITTLE LOWELL WALKWAY ALTERNATE 5 - 30% DEVELOPMENT



BIG LOWELL WALKWAYS - 30% DEVELOPMENT



DEPT. OF CONSERVATION & RECREATION
LOWELL MEMORIAL PARK

30% CONSTRUCTION DESIGN
RECOMMENDATIONS 21 OCTOBER 2019

kzla

LEGEND

- BRICK WALL
- BRICK PIER
- RESTORED BRICK WALLS
- RESTORED PIERS



DEPT. OF CONSERVATION & RECREATION
LOWELL MEMORIAL PARK

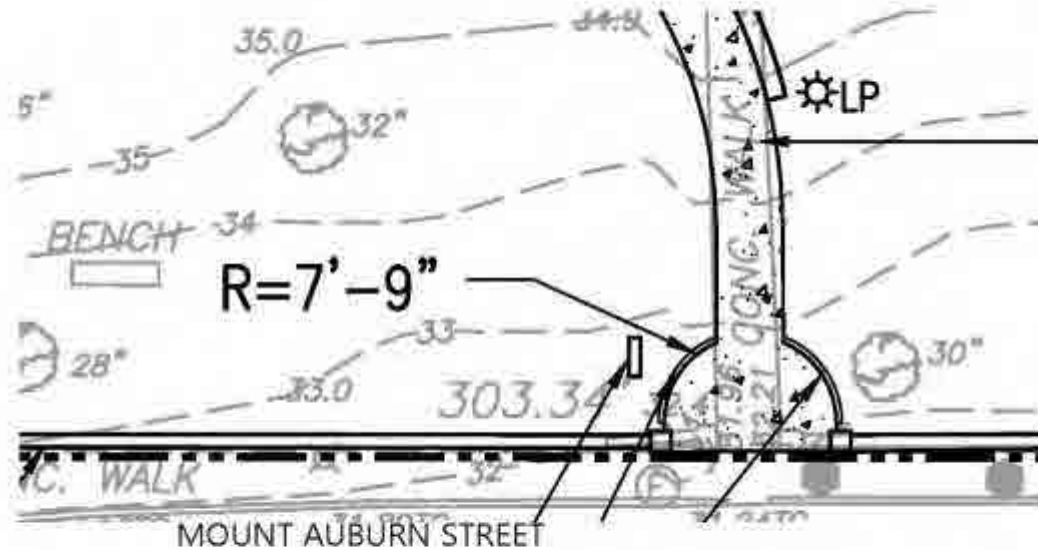
30% CONSTRUCTION DESIGN
RECOMMENDATIONS 21 OCTOBER 2019

kzla

RECOMMENDATIONS FOR WALL REPAIRS (2014)

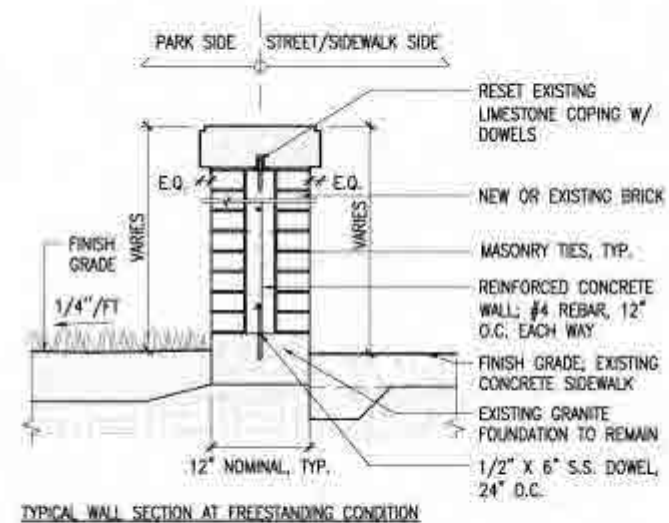
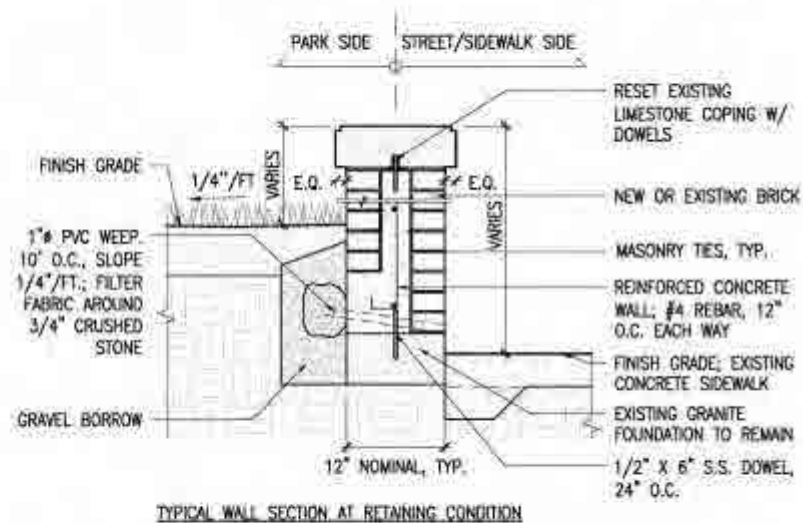
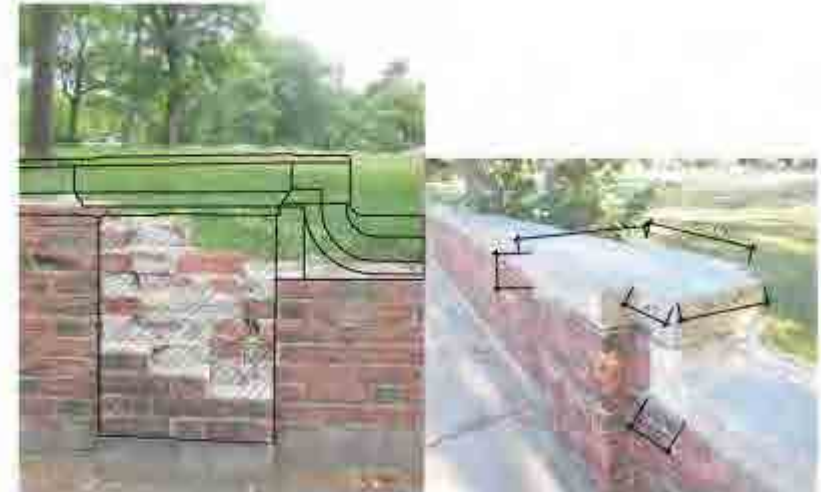
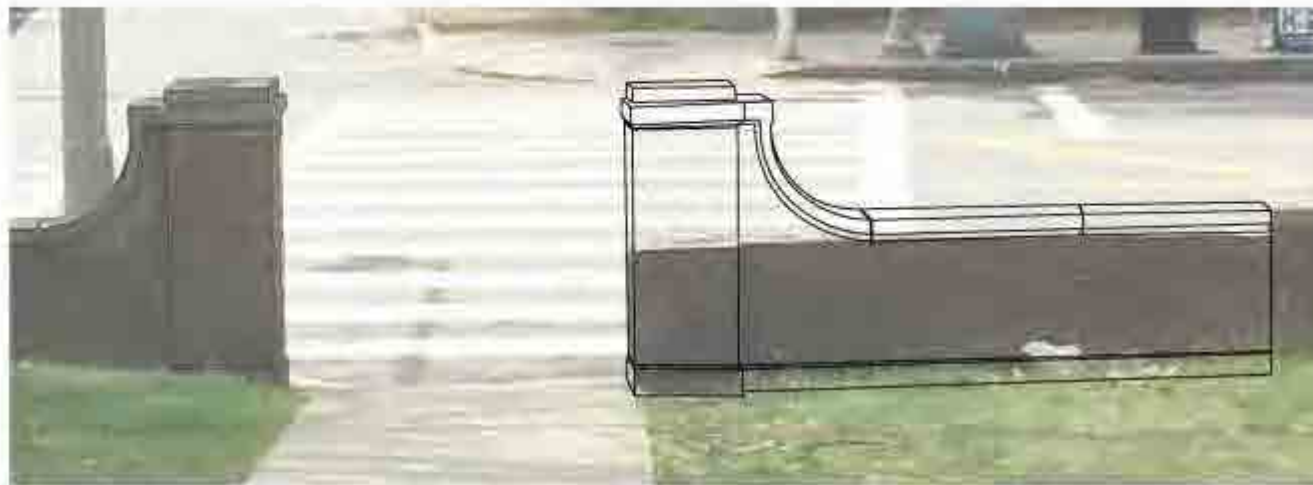
- Reset all limestone coping with dowels
- Replace missing limestone coping stones
- Remove, dispose & replace all flashing
- Replace missing brick
- Reconstruct severely cracked areas and displaced, dislodged & bulged wall segments
 - Reuse original brick
- Re-point the entire wall
- Reset settled granite foundation stones
- Rebuild wall at snapped headers (corners)
- Regrade soil around the wall where granite foundation stones are buried
- Prune any vegetation touching the wall
- Fully clean entire wall to remove biological growth & any graffiti
- Install repair mortar in small spalls in coping stones





RESTORATION GOALS:

- Reconstruct wall in historic location
- Offset piers by 4 feet on both sides of pathway
- Create gateway space in hardscape

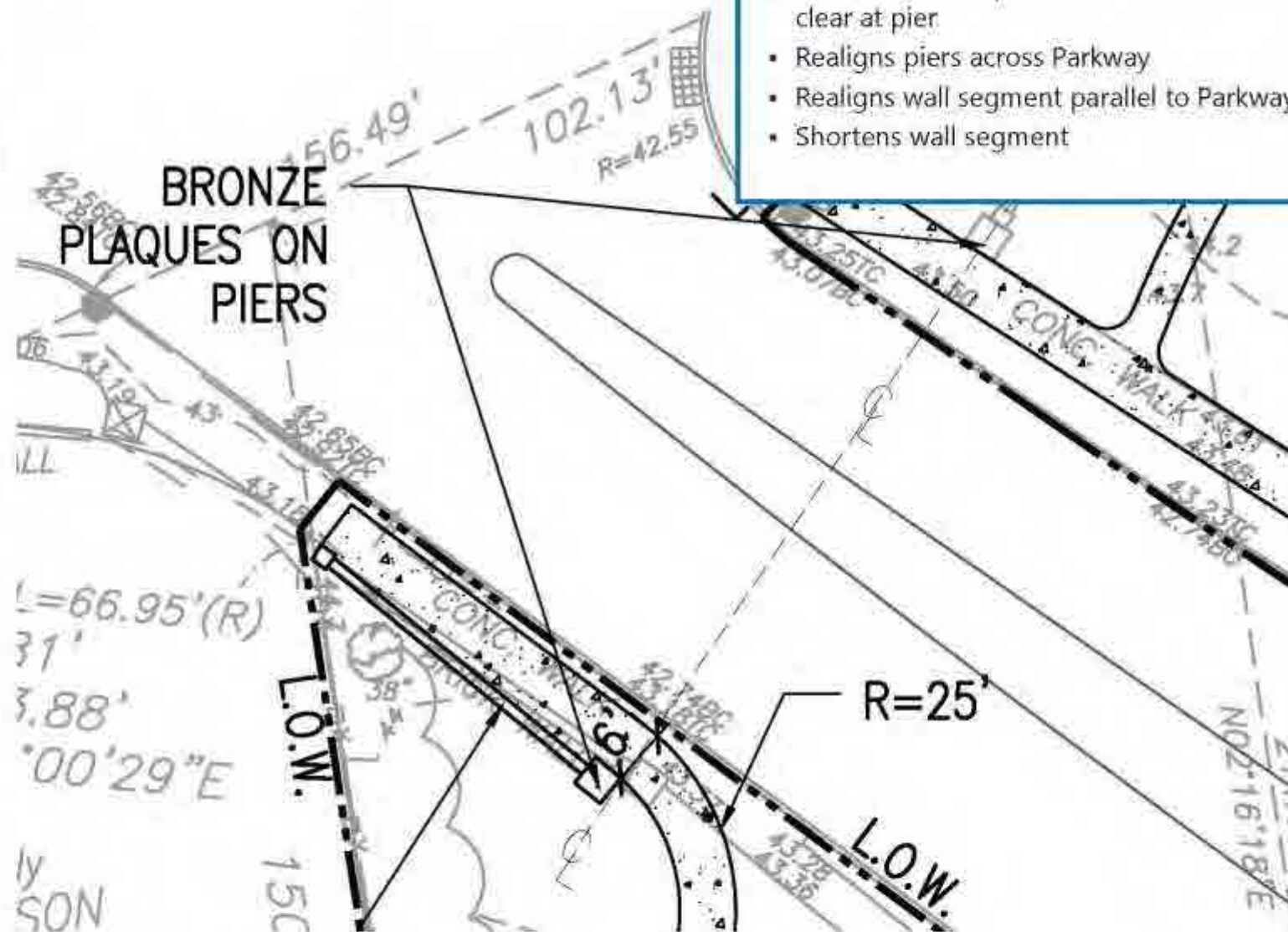




BRONZE
PLAQUES ON
PIERS

RESTORATION GOALS:

- Pushes wall and piers back to allow 6 feet clear at pier
- Realigns piers across Parkway
- Realigns wall segment parallel to Parkway
- Shortens wall segment





1906 Olmsted planting plan: tree & shrub massing



2019 Existing planting: tree & shrub massing

LEGEND

- TREE PLANTING
- SHRUB PLANTING

-  EXISTING TREE
-  PROPOSED TREE (16)
-  SCIONS OF MAPLE (3)
-  SHRUB PLANTING

- Dead, dying, or damaged (9)
- Inconsistent with Olmsted Brothers plan (13)
- Trees in poor location for pathway restoration (2)
- Trees within 5 feet of walls (12)
- Stumps to be removed (5)



RECOMMENDATIONS 21 OCTOBER 2019



Washington hawthorn



Redmond linden



Pin oak



Red oak



Flowering dogwood



Bearberry



Foamflower



Sweet woodruff



Cranberrybush viburnum



Coralberry



Ninebark



Mock orange



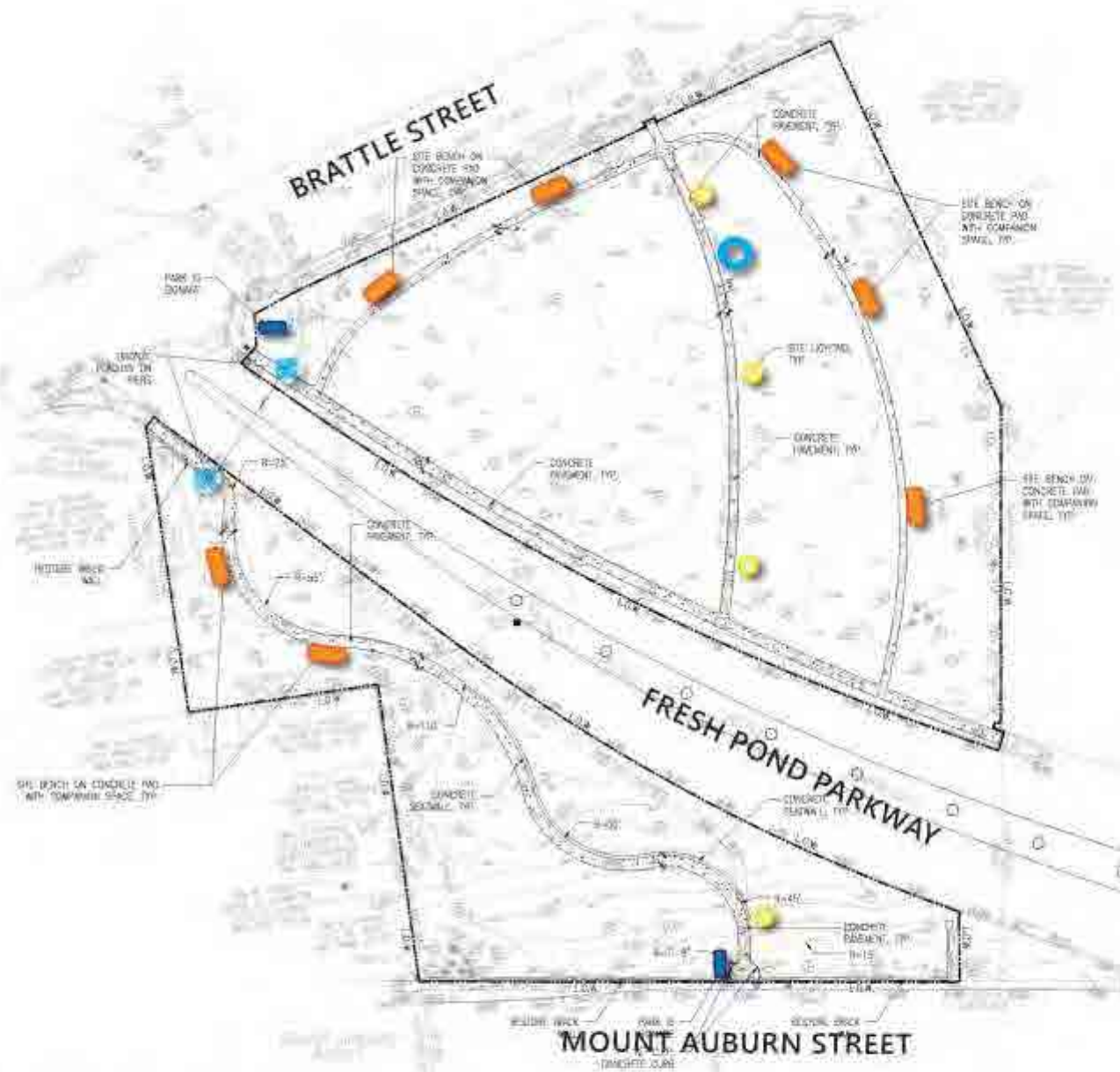
Arrowwood



Meadowsweet

LEGEND

- PROPOSED LIGHT FIXTURES
- PROPOSED BENCH
- PROPOSED PARK ID SIGNS
- INTERPRETIVE SIGNAGE
- HISTORIC WALL PLAQUES





STERNBERG LIGHTING: WARRENVILLE



SAMPLE DCR PARK SIGNAGE



DCR SHURCLIFF BENCH

DEPT. OF CONSERVATION & RECREATION
LOWELL MEMORIAL PARK

30% CONSTRUCTION DESIGN

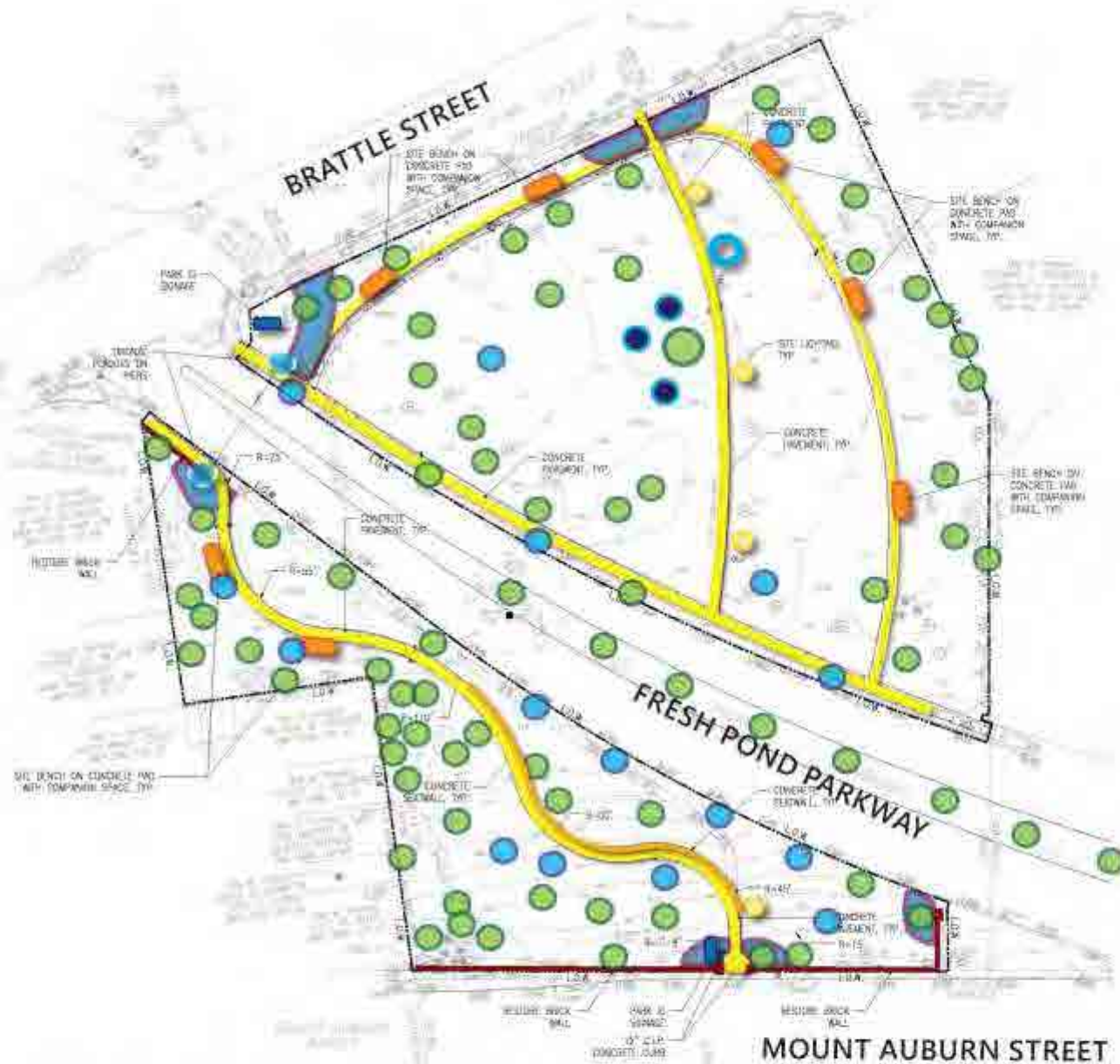
RECOMMENDATIONS

21 OCTOBER 2019

kzla

LEGEND

-  PROPOSED LIGHT FIXTURES
-  PROPOSED BENCH
-  PROPOSED PARK ID SIGNS
-  INTERPRETIVE SIGNAGE
-  HISTORIC WALL PLAQUES
-  EXISTING TREE
-  PROPOSED TREE (16)
-  SCIONS OF MAPLE (3)
-  SHRUB PLANTING



DEPT. OF CONSERVATION & RECREATION
LOWELL MEMORIAL PARK

RECOMMENDATIONS 21 OCTOBER 2019

kzla

NEXT STEPS

PLAN DEVELOPMENT

- FINAL DESIGN DEVELOPMENT
 - PLAN ADJUSTMENTS
 - DETAILS
 - SPECIFICATIONS
 - REVISE COST ESTIMATE (ORDER OF MAGNITUDE: \$1.M)

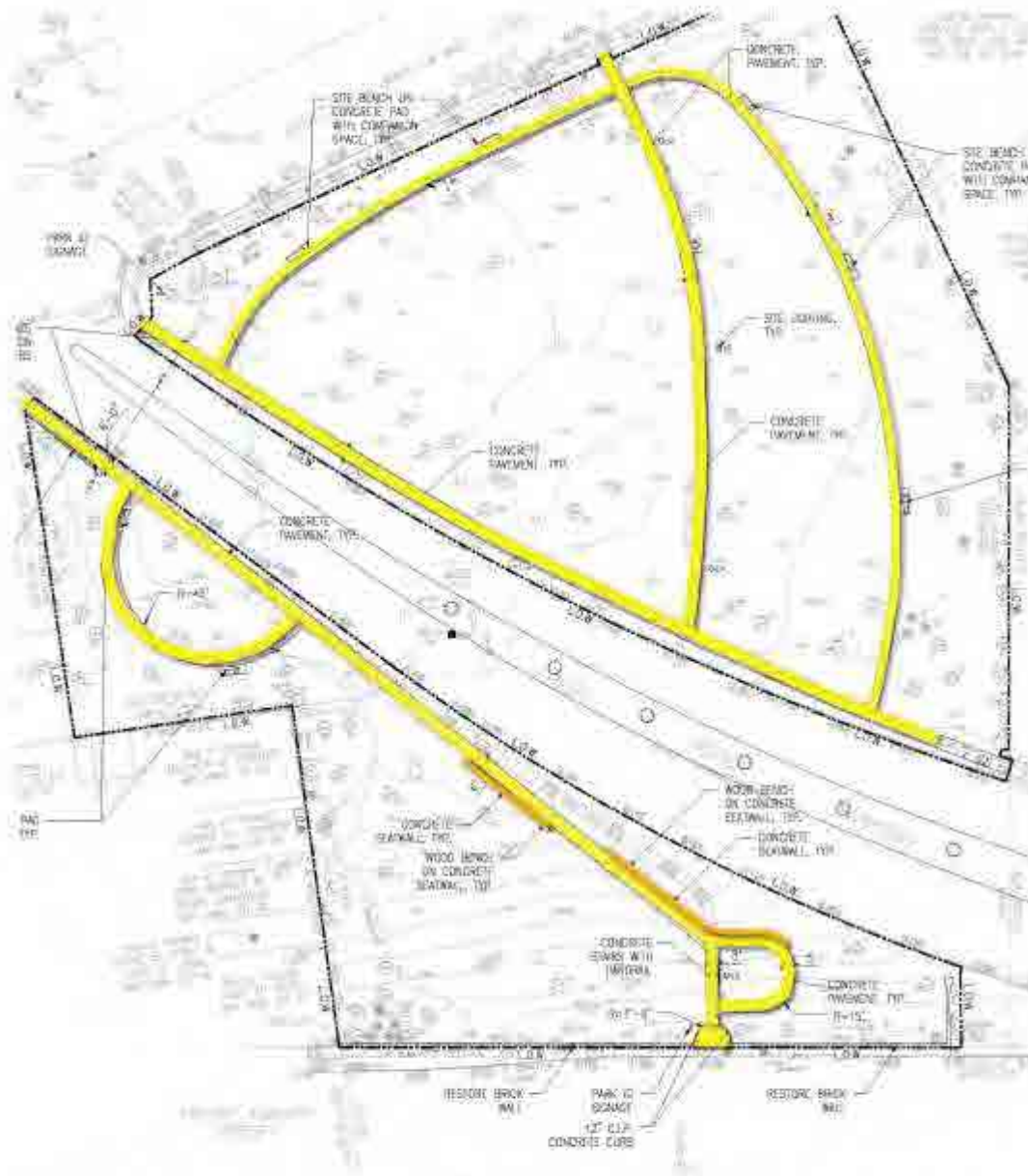
FUNDING

- DETERMINE FUNDING SOURCES
 - DCR
 - GRANTS?
 - C.P.A.?

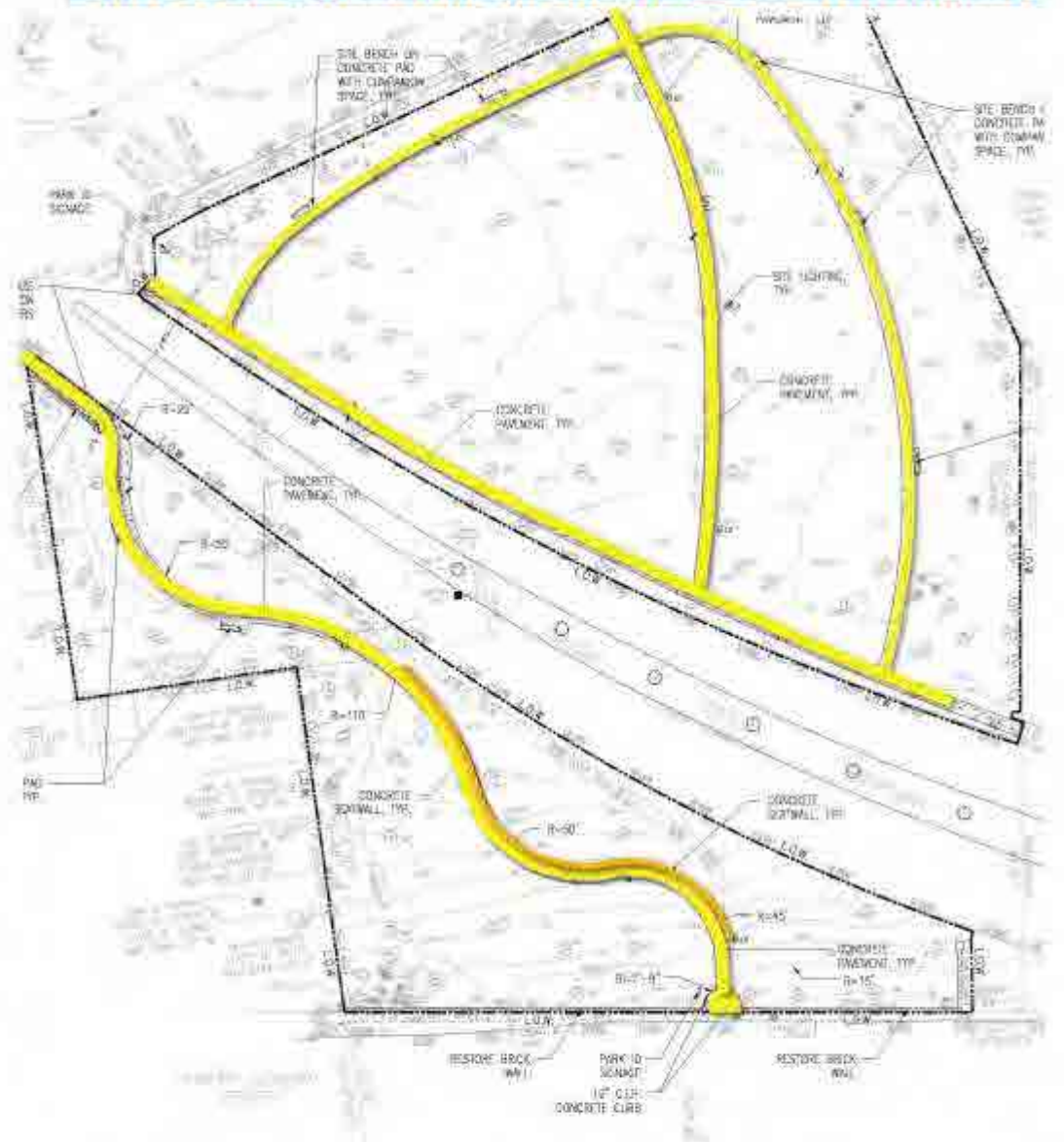
PHASING

- TO BE DETERMINED BASED ON AVAILABLE FUNDING

Questions & Answers



LITTLE LOWELL WALKWAY ALTERNATES - 30% DEVELOPMENT



DEPT. OF CONSERVATION & RECREATION
LOWELL MEMORIAL PARK

30% CONSTRUCTION DESIGN

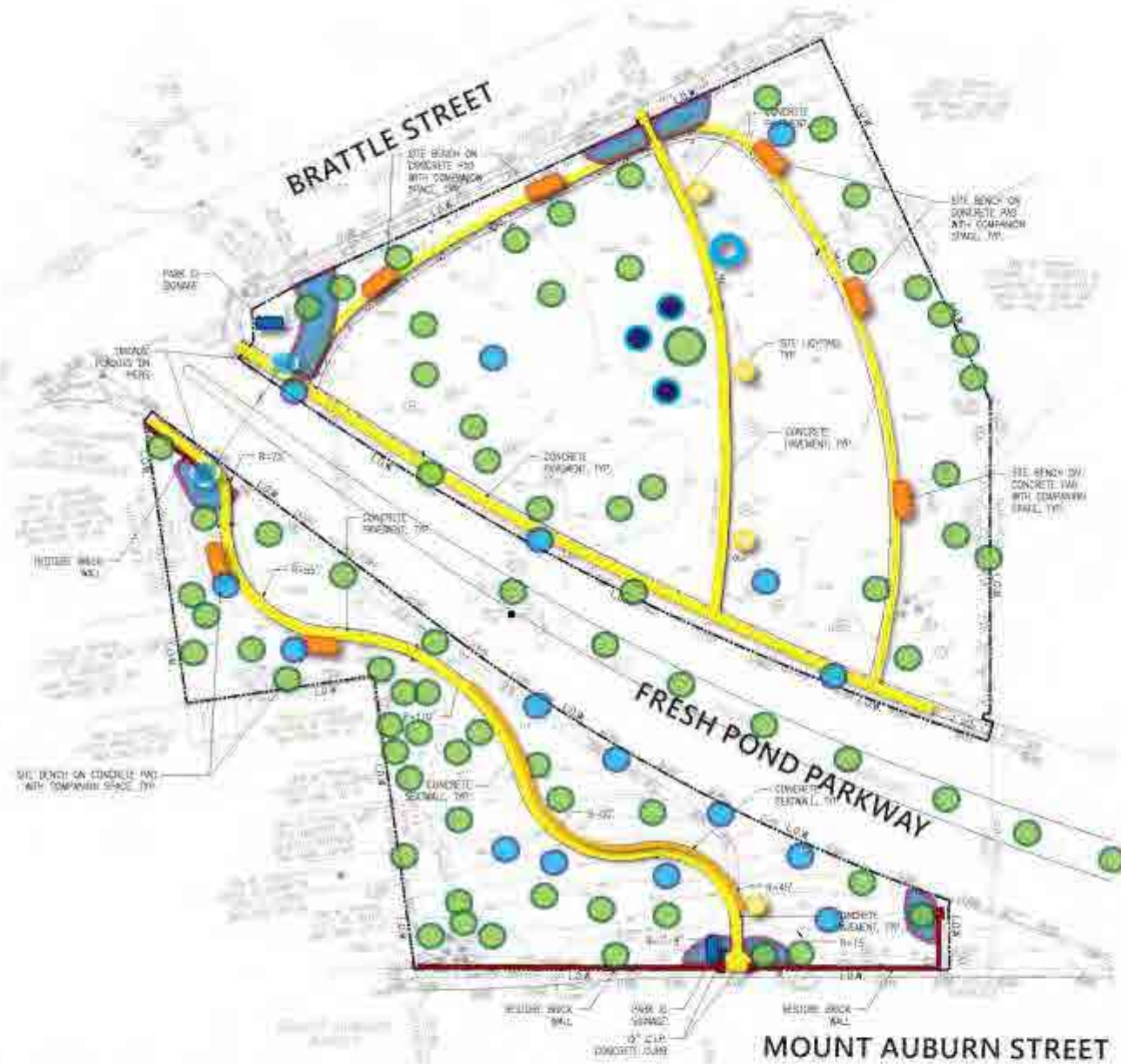
RECOMMENDATIONS

21 OCTOBER 2019

kzla

LEGEND

-  PROPOSED LIGHT FIXTURES
-  PROPOSED BENCH
-  PROPOSED PARK ID SIGNS
-  INTERPRETIVE SIGNAGE
-  HISTORIC WALL PLAQUES
-  EXISTING TREE
-  PROPOSED TREE (16)
-  SCIONS OF MAPLE (3)
-  SHRUB PLANTING



DEPT. OF CONSERVATION & RECREATION
LOWELL MEMORIAL PARK

RECOMMENDATIONS 21 OCTOBER 2019

Additional Information

For more information:

www.mass.gov/dcr/past-public-meetings

If you have comments or suggestions on this project:

Submit online: www.mass.gov/dcr/public-comment

Write: Department of Conservation and Recreation
Office of Public Outreach
251 Causeway Street, Suite 600
Boston, MA 02114

Deadline: November 8, 2019

Note: Public comments submitted to DCR may be posted on the DCR website in their entirety, and no information, including contact information, will be redacted.

If you wish to subscribe to a DCR general information or project-related listserv: contact DCR's Office of Community Relations at 617-626-4973 or Mass.Parks@mass.gov.