



Below is the status as of June 5, 2020:


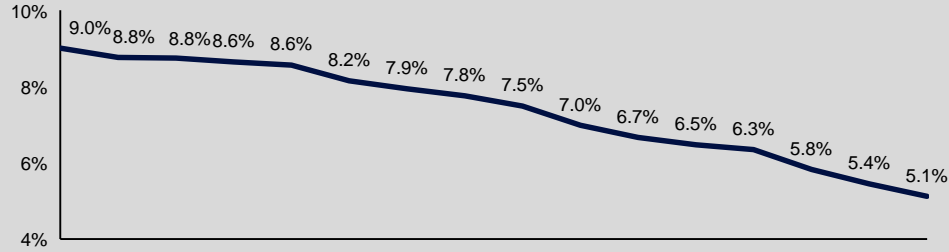

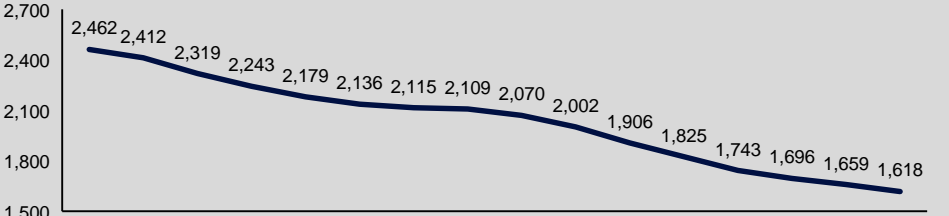

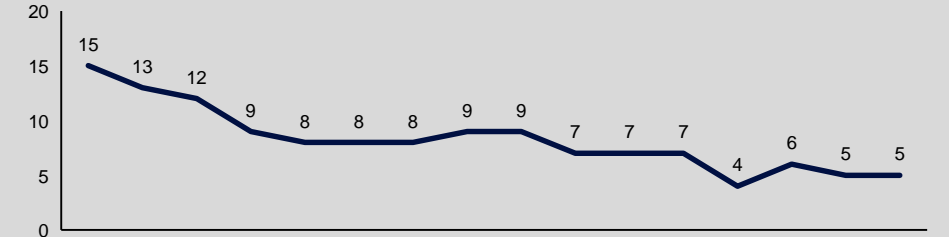

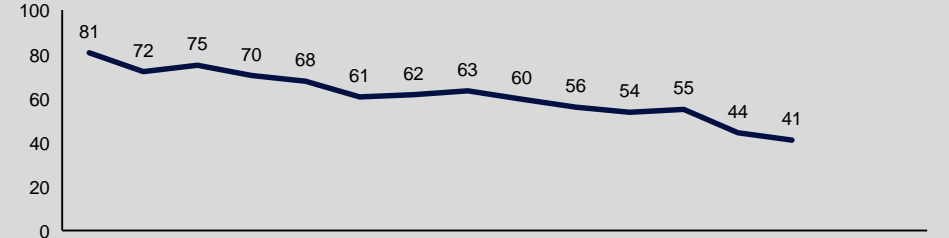
Measure	Status
COVID-19 positive test rate	●
Number of individuals who died from COVID-19	●
Number of patients with COVID-19 in hospitals	●
Healthcare system readiness	●
Testing capacity	●
Contact tracing capabilities	●

Legend

- Positive trend
- In progress
- Negative trend

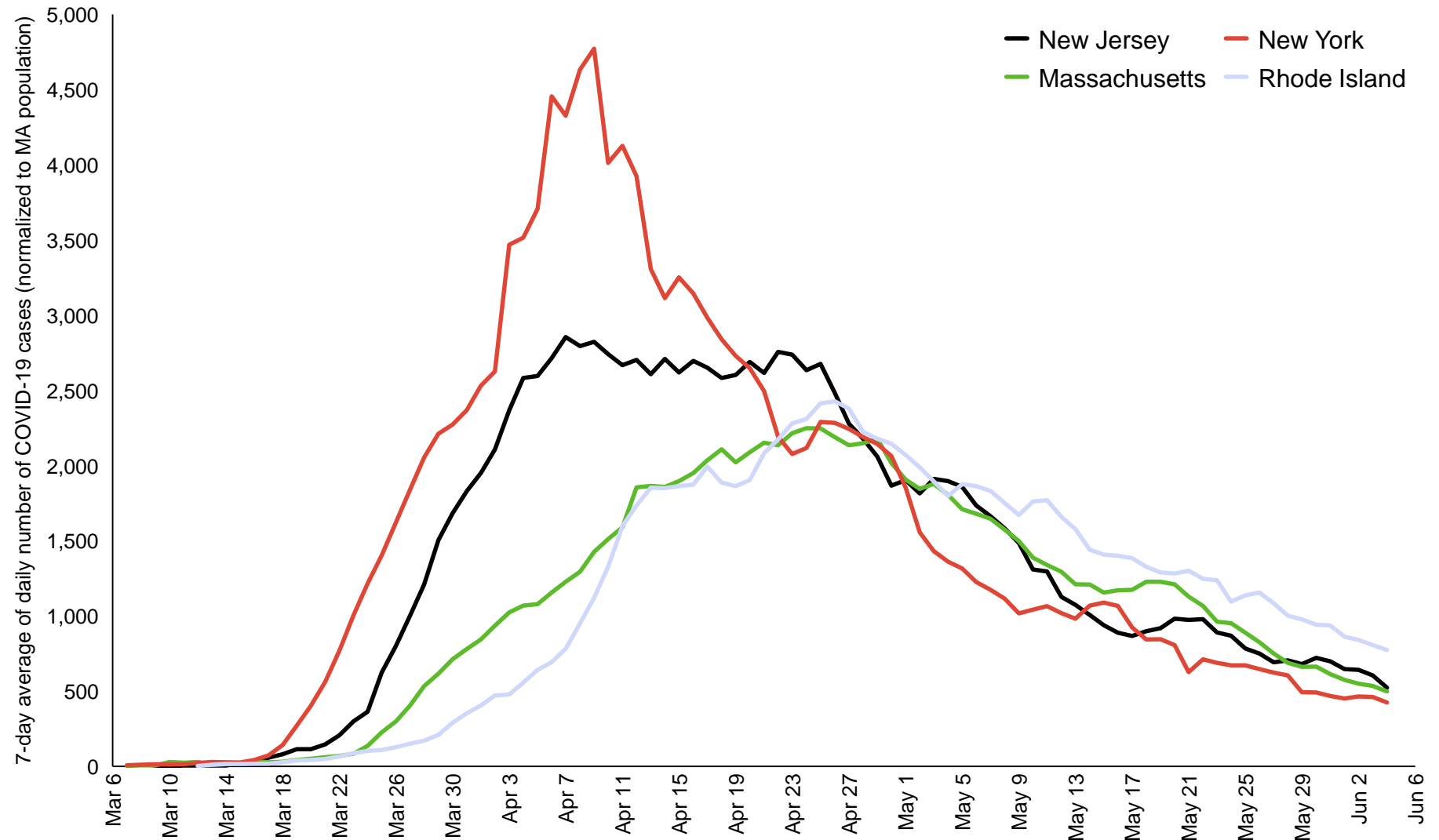


Reopening Data Metrics

Metric	Values	% change since April 15 th	Consecutive days of decline in the metric	Total days since highest observed value																																		
7 day average of positive test rate 	 <table border="1"> <tr><th>Date</th><td>May 20</td><td>May 21</td><td>May 22</td><td>May 23</td><td>May 24</td><td>May 25</td><td>May 26</td><td>May 27</td><td>May 28</td><td>May 29</td><td>May 30</td><td>May 31</td><td>Jun 1</td><td>Jun 2</td><td>Jun 3</td><td>Jun 4</td></tr> <tr><th>Value</th><td>9.0%</td><td>8.8%</td><td>8.8%</td><td>8.6%</td><td>8.6%</td><td>8.2%</td><td>7.9%</td><td>7.8%</td><td>7.5%</td><td>7.0%</td><td>6.7%</td><td>6.5%</td><td>6.3%</td><td>5.8%</td><td>5.4%</td><td>5.1%</td></tr> </table>	Date	May 20	May 21	May 22	May 23	May 24	May 25	May 26	May 27	May 28	May 29	May 30	May 31	Jun 1	Jun 2	Jun 3	Jun 4	Value	9.0%	8.8%	8.8%	8.6%	8.6%	8.2%	7.9%	7.8%	7.5%	7.0%	6.7%	6.5%	6.3%	5.8%	5.4%	5.1%	-82%	52	52
Date	May 20	May 21	May 22	May 23	May 24	May 25	May 26	May 27	May 28	May 29	May 30	May 31	Jun 1	Jun 2	Jun 3	Jun 4																						
Value	9.0%	8.8%	8.8%	8.6%	8.6%	8.2%	7.9%	7.8%	7.5%	7.0%	6.7%	6.5%	6.3%	5.8%	5.4%	5.1%																						
3-day average of # of COVID patients in Hospital 	 <table border="1"> <tr><th>Date</th><td>May 20</td><td>May 21</td><td>May 22</td><td>May 23</td><td>May 24</td><td>May 25</td><td>May 26</td><td>May 27</td><td>May 28</td><td>May 29</td><td>May 30</td><td>May 31</td><td>Jun 1</td><td>Jun 2</td><td>Jun 3</td><td>Jun 4</td></tr> <tr><th>Value</th><td>2,462</td><td>2,412</td><td>2,319</td><td>2,243</td><td>2,179</td><td>2,136</td><td>2,115</td><td>2,109</td><td>2,070</td><td>2,002</td><td>1,906</td><td>1,825</td><td>1,743</td><td>1,696</td><td>1,659</td><td>1,618</td></tr> </table>	Date	May 20	May 21	May 22	May 23	May 24	May 25	May 26	May 27	May 28	May 29	May 30	May 31	Jun 1	Jun 2	Jun 3	Jun 4	Value	2,462	2,412	2,319	2,243	2,179	2,136	2,115	2,109	2,070	2,002	1,906	1,825	1,743	1,696	1,659	1,618	-55%	37	43
Date	May 20	May 21	May 22	May 23	May 24	May 25	May 26	May 27	May 28	May 29	May 30	May 31	Jun 1	Jun 2	Jun 3	Jun 4																						
Value	2,462	2,412	2,319	2,243	2,179	2,136	2,115	2,109	2,070	2,002	1,906	1,825	1,743	1,696	1,659	1,618																						
Number of hospitals using ICU surge capacity 	 <table border="1"> <tr><th>Date</th><td>May 20</td><td>May 21</td><td>May 22</td><td>May 23</td><td>May 24</td><td>May 25</td><td>May 26</td><td>May 27</td><td>May 28</td><td>May 29</td><td>May 30</td><td>May 31</td><td>Jun 1</td><td>Jun 2</td><td>Jun 3</td><td>Jun 4</td></tr> <tr><th>Value</th><td>15</td><td>13</td><td>12</td><td>9</td><td>8</td><td>8</td><td>8</td><td>9</td><td>9</td><td>7</td><td>7</td><td>7</td><td>4</td><td>6</td><td>5</td><td>5</td></tr> </table>	Date	May 20	May 21	May 22	May 23	May 24	May 25	May 26	May 27	May 28	May 29	May 30	May 31	Jun 1	Jun 2	Jun 3	Jun 4	Value	15	13	12	9	8	8	8	9	9	7	7	7	4	6	5	5	-76%	0	51
Date	May 20	May 21	May 22	May 23	May 24	May 25	May 26	May 27	May 28	May 29	May 30	May 31	Jun 1	Jun 2	Jun 3	Jun 4																						
Value	15	13	12	9	8	8	8	9	9	7	7	7	4	6	5	5																						
3 day average of # of COVID positive deaths 	 <table border="1"> <tr><th>Date</th><td>May 20</td><td>May 21</td><td>May 22</td><td>May 23</td><td>May 24</td><td>May 25</td><td>May 26</td><td>May 27</td><td>May 28</td><td>May 29</td><td>May 30</td><td>May 31</td><td>Jun 1</td><td>Jun 2</td><td>Jun 3</td><td>Jun 4</td></tr> <tr><th>Value</th><td>81</td><td>72</td><td>75</td><td>70</td><td>68</td><td>61</td><td>62</td><td>63</td><td>60</td><td>56</td><td>54</td><td>55</td><td>44</td><td>41</td><td></td><td></td></tr> </table>	Date	May 20	May 21	May 22	May 23	May 24	May 25	May 26	May 27	May 28	May 29	May 30	May 31	Jun 1	Jun 2	Jun 3	Jun 4	Value	81	72	75	70	68	61	62	63	60	56	54	55	44	41			-73%	2	39
Date	May 20	May 21	May 22	May 23	May 24	May 25	May 26	May 27	May 28	May 29	May 30	May 31	Jun 1	Jun 2	Jun 3	Jun 4																						
Value	81	72	75	70	68	61	62	63	60	56	54	55	44	41																								



Daily COVID-19 cases in four states





REOPENING: PHASE 2 – CAUTIOUS

The phased reopening gives businesses permission to reopen, but **reopening is not mandatory**. Businesses should refer to the Sector-Specific Protocols and best practices for detailed guidance on reopening and should follow a self-certification process.

Phase 2: Cautious

The following businesses will be eligible to reopen, subject to their ability to comply with all mandatory safety standards:

Step 1: June 8th

- **Retail**, with occupancy limits
- **Childcare facilities and day camps**, with new detailed guidance
- **Restaurants**, outdoor table service only
- **Hotels and other lodgings**, no events, functions, or meetings
- **Warehouses and distribution centers**
- **Personal services without close physical contact**, such as home cleaning, photography, window washing, career coaching, education tutoring
- **Post-secondary, higher education, vocational-tech, and occupation schools**, only for the purpose of completing required courses for graduation
- **Youth and adult amateur sports**, with detailed guidance
- **Outdoor recreation facilities**, including pools, playgrounds, driving ranges
- **Professional sports practices**, no games and no public admissions
- **Non-athletic youth instructional classes** in arts/education/life skills, groups of <10
- **Driving and flight schools**
- **Outdoor historical spaces**, no functions or gatherings, no guided tours
- **Funeral homes**, with occupancy limits

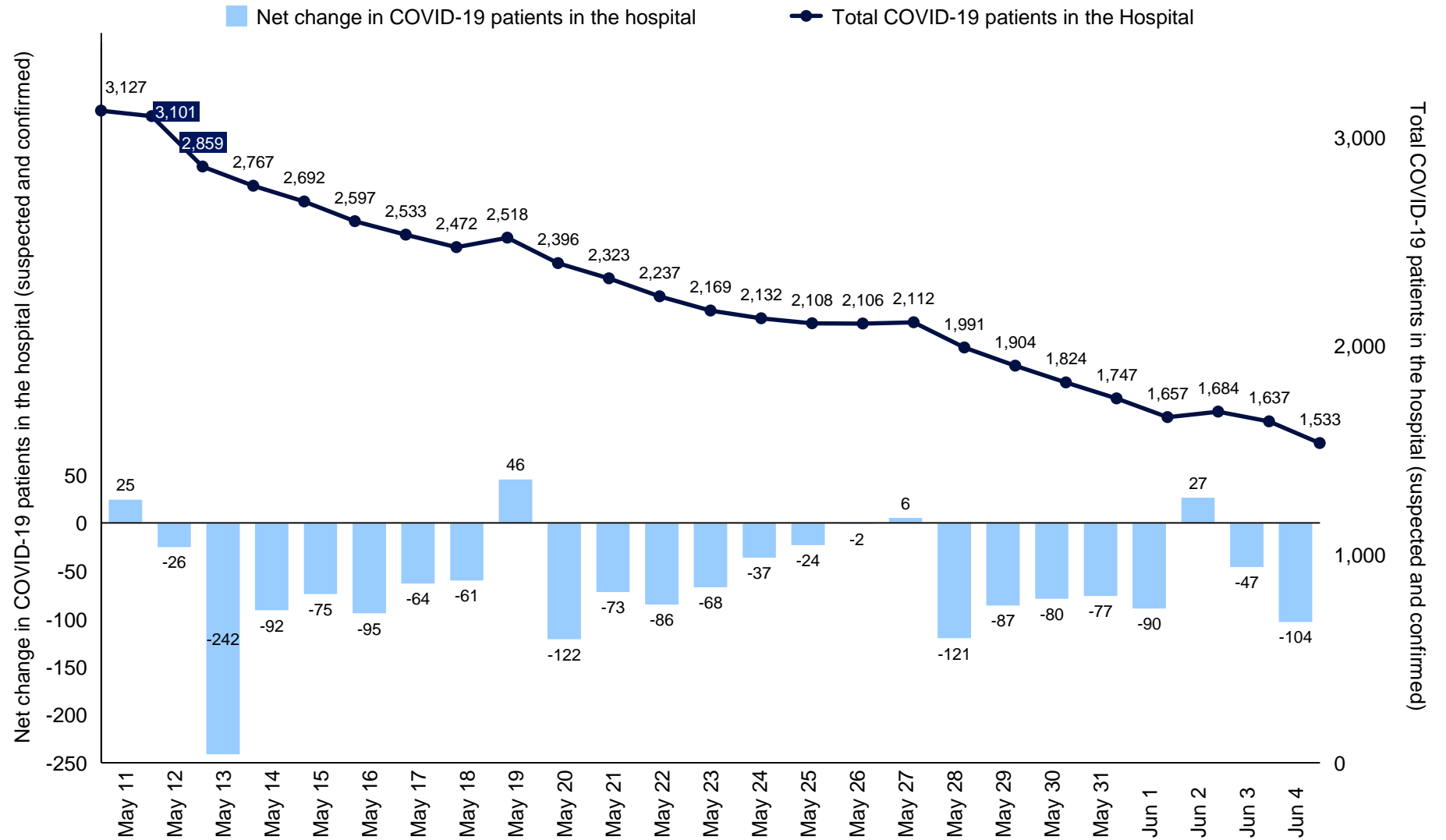
Step 2: TBD

- **Indoor table service** at restaurants
- **Close-contact personal services**, with restrictions, including:
 - Hair removal
 - Hair replacement and scalp treatment
 - Nail care
 - Skin care
 - Massage therapy
 - Makeup salons and makeup application services
 - Tanning salons
 - Tattoo, piercing, and body art services
 - Personal trainers, with restrictions

Full list and safety protocols available at:
[Mass.Gov/Reopening](https://www.mass.gov/reopening)



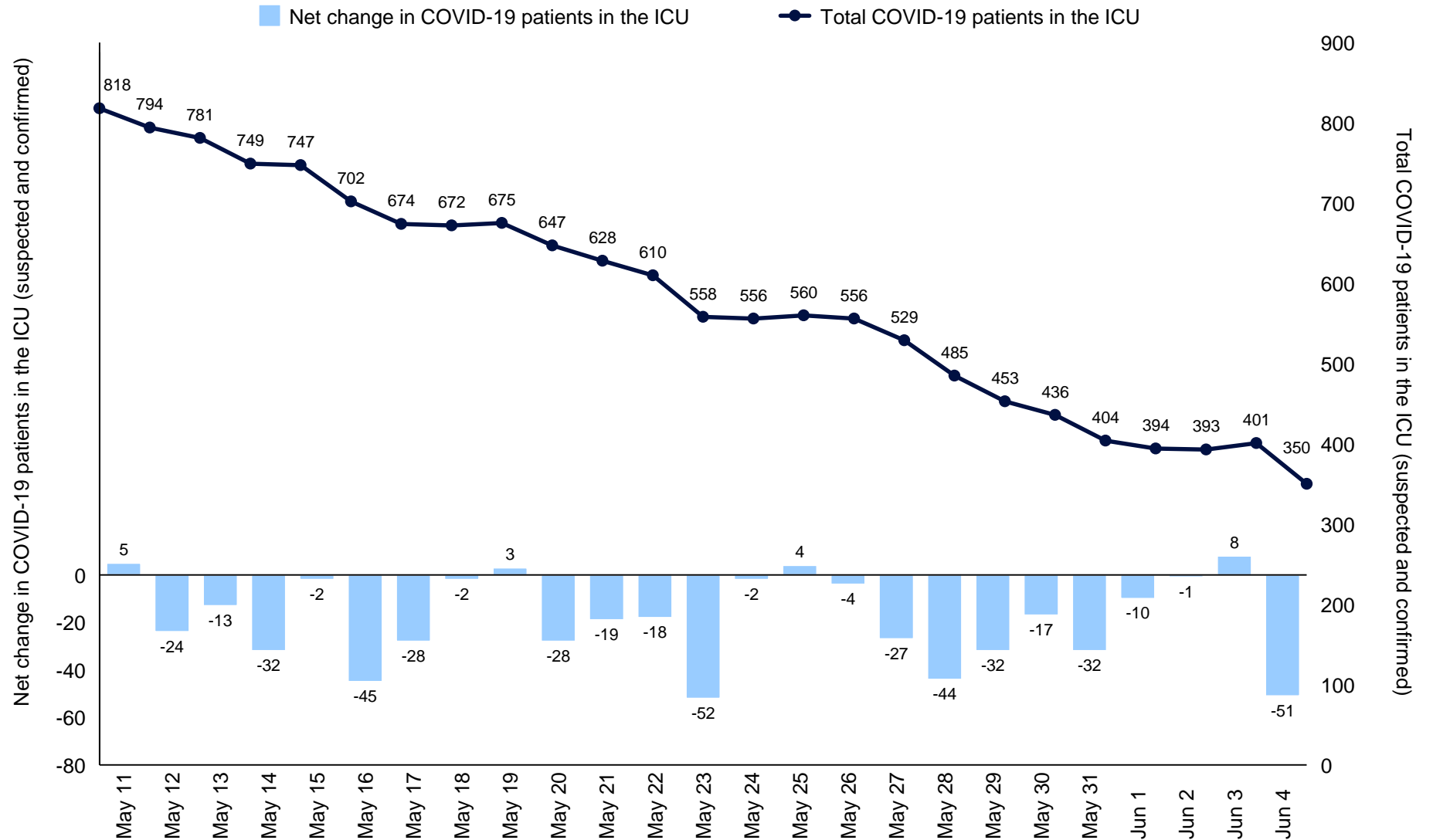
COVID-19 Total Hospital Census



Source: DPH data (Survey data self reported by hospitals)



COVID-19 ICU Census



Source: DPH data (Survey data self reported by hospitals)