

Highway Administrator's Report

Jonathan Gulliver

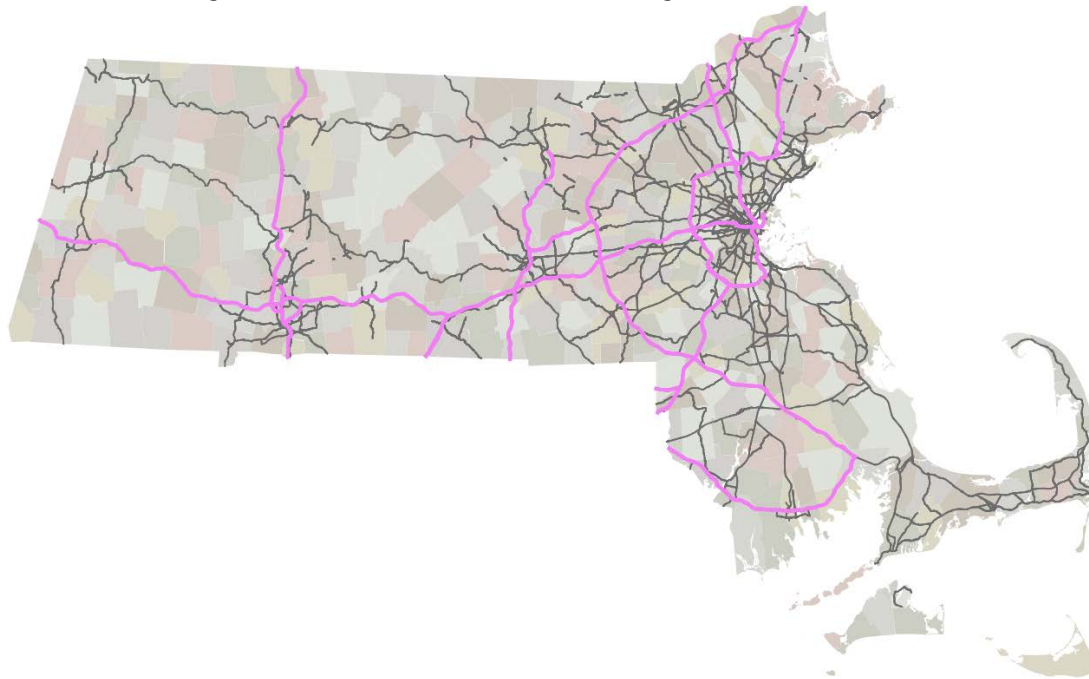
April 23, 2018

Snow and Ice Season 2017-2018 Updates



NHS TAMP

- 14% of state lane mileage is NHS, 60% of vehicle miles travelled (2016)
- NHS consists of the Interstate system & other facilities which contribute to national economy, defense, & mobility



- The Highway Division will file an initial NHS TAMP April 30, and submit a final Plan June 30, 2019

US Army Corp Projects on Canal Bridges



- Both canal bridges are under the jurisdiction of the the USACOE, not MassDOT
- MassDOT has permitting authority over approach work but not work on bridges themselves
- USACOE performing joint repairs on Sagamore (Spring) and Bourne (Fall)
- MassDOT has installed temporary signals at Route 6 Ramp to better manage traffic flow

US Army Corp Projects on Canal Bridges



- Both canal bridges are under the jurisdiction of the the USACOE, not MassDOT
- MassDOT has permitting authority over approach work but not work on bridges themselves
- USACOE performing joint repairs on Sagamore (Spring) and Bourne (Fall)
- MassDOT has installed temporary signals at Route 6 Ramp to better manage traffic flow

US Army Corp Projects on Canal Bridges

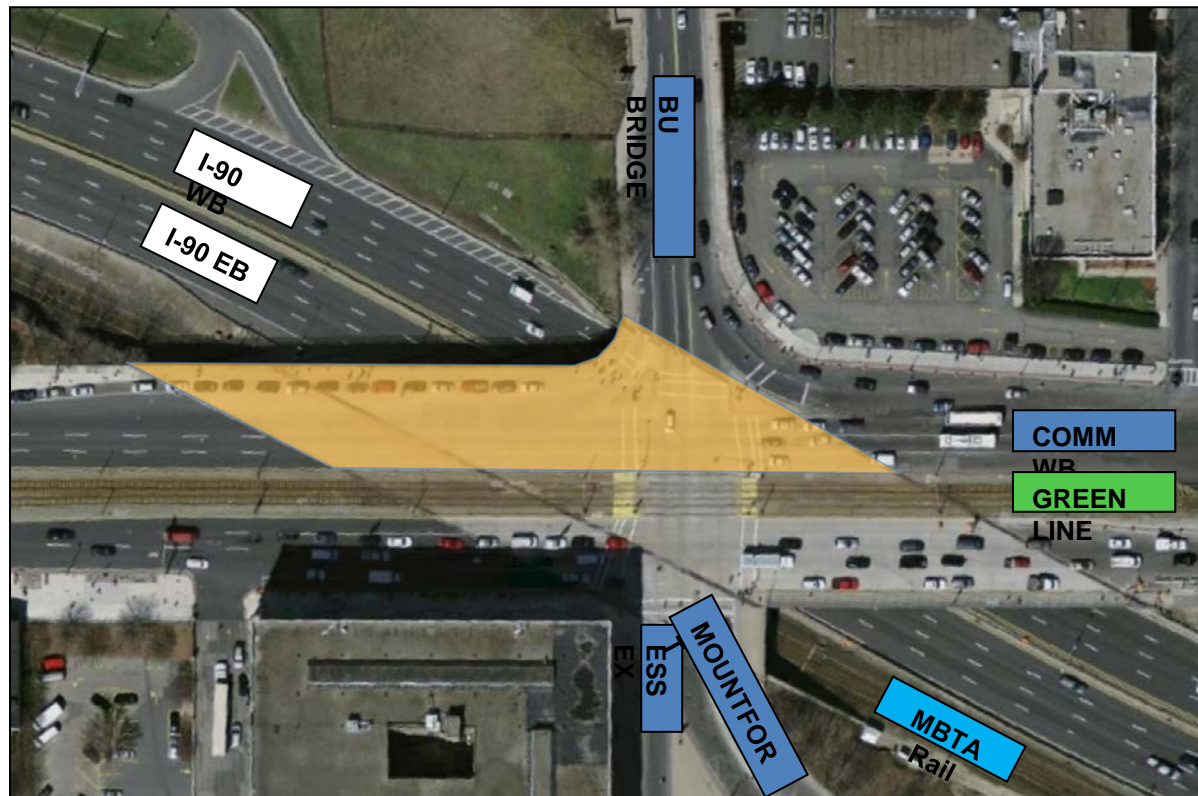


- Both canal bridges are under the jurisdiction of the the USACOE, not MassDOT
- MassDOT has permitting authority over approach work but not work on bridges themselves
- USACOE performing joint repairs on Sagamore (Spring) and Bourne (Fall)
- MassDOT has installed temporary signals at Route 6 Ramp to better manage traffic flow

2018 Construction: Comm Ave Phase 2

Summer 2018 Intensive Construction Operations

July 26 – August 11



2018 Construction: Commonwealth Avenue

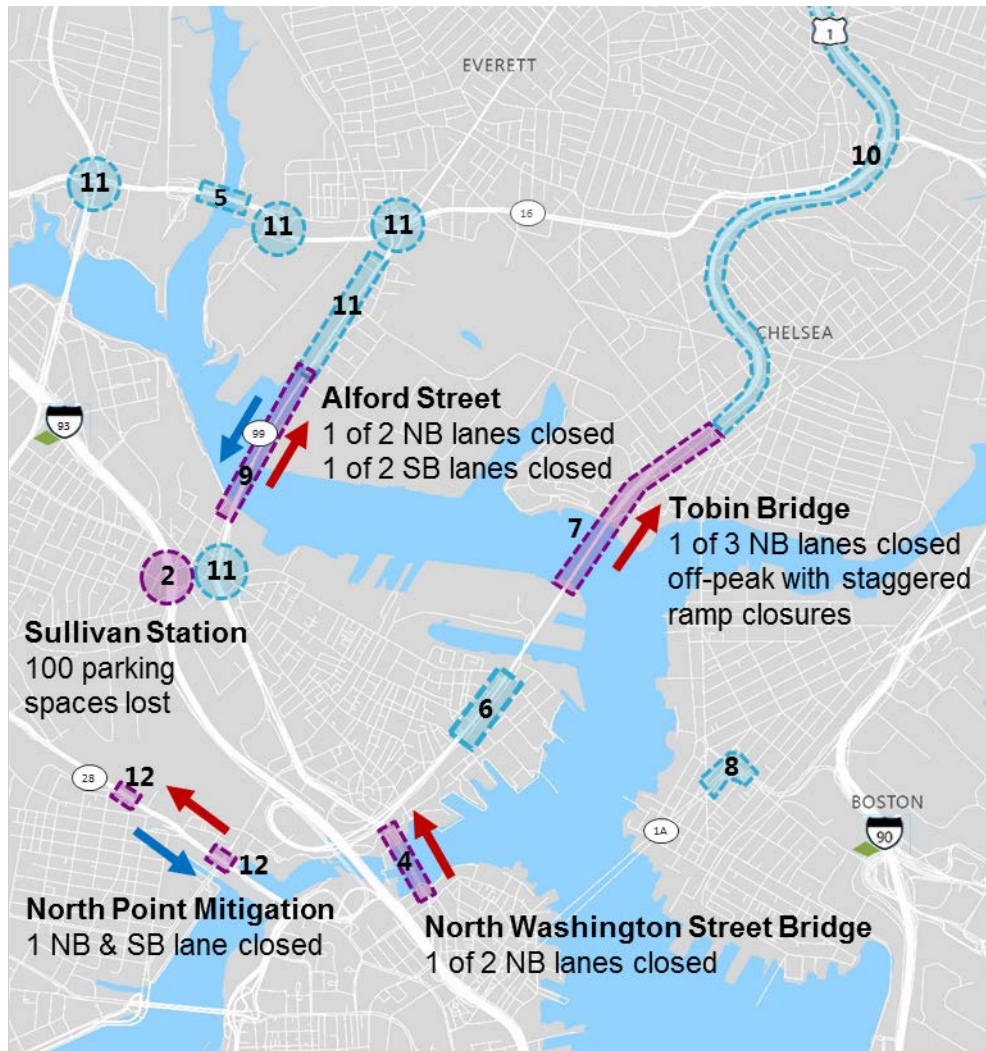
What's different in 2018?

- 15 ½ days of intensive work compared to 20 days in 2017
- I-90 will not be reduced from 4 to 3 lanes throughout the month of July
- The BU Bridge will be closed to all vehicular traffic including MBTA buses meaning expanded detours
- There will be minimal MBTA track work

Upcoming Outreach

- Public meetings beginning in May and briefings for stakeholders
- Door to door business outreach and Business Working Group
- Media briefings and interviews
- Project website updates
- Email to E-ZPass users and letters to Pay By Plate customers
- Printed materials (brochures, flyers) available in multiple languages
- Red Sox advertisements and outreach

2018 Construction: North of Boston



Alford Street deck replacement scheduled to start this Fall per US Coast Guard Schedule

North Washington Street schedule being reviewed along with construction management proposals

Tobin Bridge team has modified schedule

2018 Construction: Updated Tobin Impacts

- Work began April 22nd
- Schedule adjustment: MassDOT will no longer implement permanent lane closure on lower deck in 2018

2018 Project Impacts:

- Temporary off-peak lane closures on the lower deck (Route 1 northbound) from now through November 2018.
- Temporary off-peak lane closures on the upper deck (Route 1 southbound) from now through November 2018.
- Everett Avenue on-ramp closed at all times for one month period beginning in May 2018.
- Beacon Street off-ramp closed at all times for a two month period beginning in summer 2018.
- Fourth Street off-ramp closed for a one month period in 2019.
- No more than one ramp will be closed at any given time throughout the duration of the project.