

# ResilientCoasts

PUBLIC MEETING 1



ResilientCoasts

JANUARY 29 & 31, 2024

# Agenda

- **WELCOME**
- **INTRODUCTION TO THE PLAN**
  - Why do we need this plan?
  - How will the process work?
- **WHAT DO WE MEAN BY A RESILIENT COAST?**
  - Review Plan goals
  - What should ResilientCoasts strategies achieve? How will we measure progress?
  - Discussion in breakout groups
- **NEXT STEPS**
  - How your input will be incorporated
  - What's coming next
  - Where to get more information

# **GUIDING PRINCIPLES FOR TODAY'S DISCUSSION**

- **Be present**
- **Assume good intentions and be mindful of impact**
- **Be open to another perspective**
- **Make space/take space**
- **No technical expertise needed to participate. No question is bad or silly to ask.**

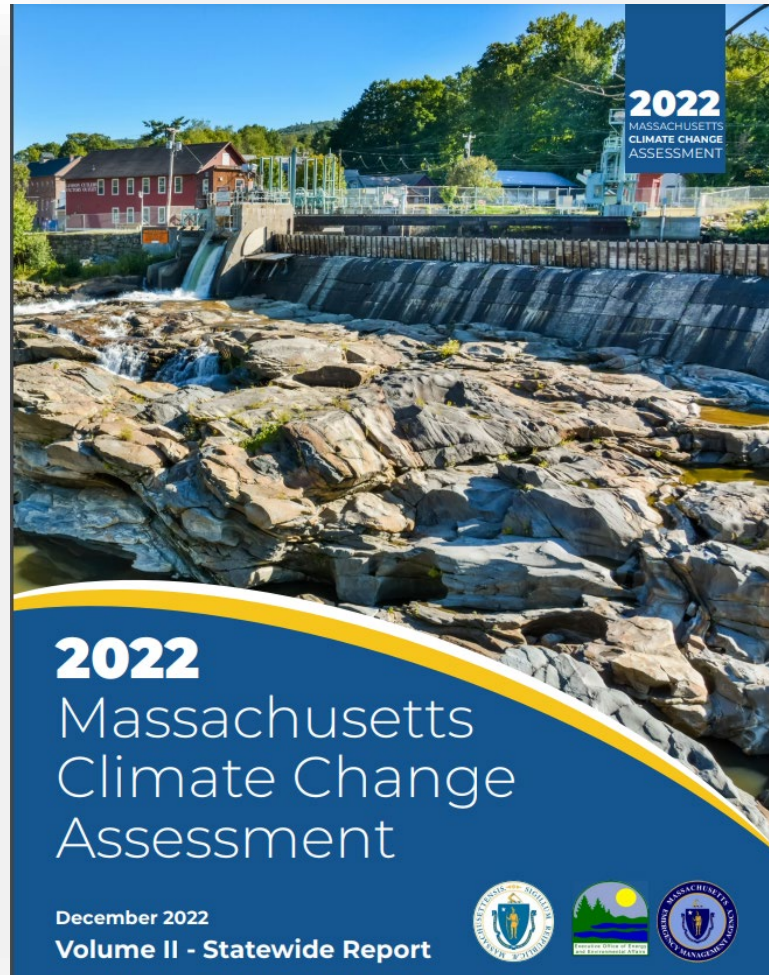
**ASK QUESTIONS IN CHAT AT ANY TIME (WE'LL RESPOND AS WE ARE ABLE)!**

**WE'LL ALSO PAUSE FOR Q&A AFTER WE INTRODUCE THE PLAN.**

# **Introduction to the ResilientCoasts Plan**



# MA CLIMATE CHANGE ASSESSMENT (DEC. 2022)



## KEY FINDINGS ABOUT OUR COAST

- Coastal impacts on people & ecosystems are increasing due to sea level rise & changing coastal storms
- During extreme storms, road flooding causes delays in emergency response, potentially leading to loss of life
- Storm surge & coastal erosion cause property & infrastructure damages
- Sea level rise leads to coastal habitat shifts & loss of salt marshes & beaches

# RESILIENTMASS PLAN (SEP. 2023)



## RECOMMENDED ACTION LED TO RESILIENT COASTS:

- Develop a coordinated, equitable & effective coastal resilience strategy in partnership with coastal municipalities & other coastal stakeholders

# RESILIENTCOASTS PLAN

- **Responsible for advancing:** EEA - Executive Office of Energy & Environmental Affairs & CZM - Office of Coastal Zone Management
- **Purpose:** guide state & local coastal resilience policy & management actions
- **Process:**
  - *Describe a vision/goals* & metrics for a resilient coast
  - *Map geographic zones* of climate vulnerability or “coastal resilience districts”
  - *Evaluate current & new strategies* and how they could be applied to different districts
  - *Develop recommendations* to guide management of vulnerable areas at state & local level
- **Throughout - stakeholder engagement and coordination:** Internal Agency Working Group, External Task Force, Community Liaisons
  - Public meetings (like this one), surveys (forthcoming), focus groups/interviews



# TIMELINE

WE ARE HERE

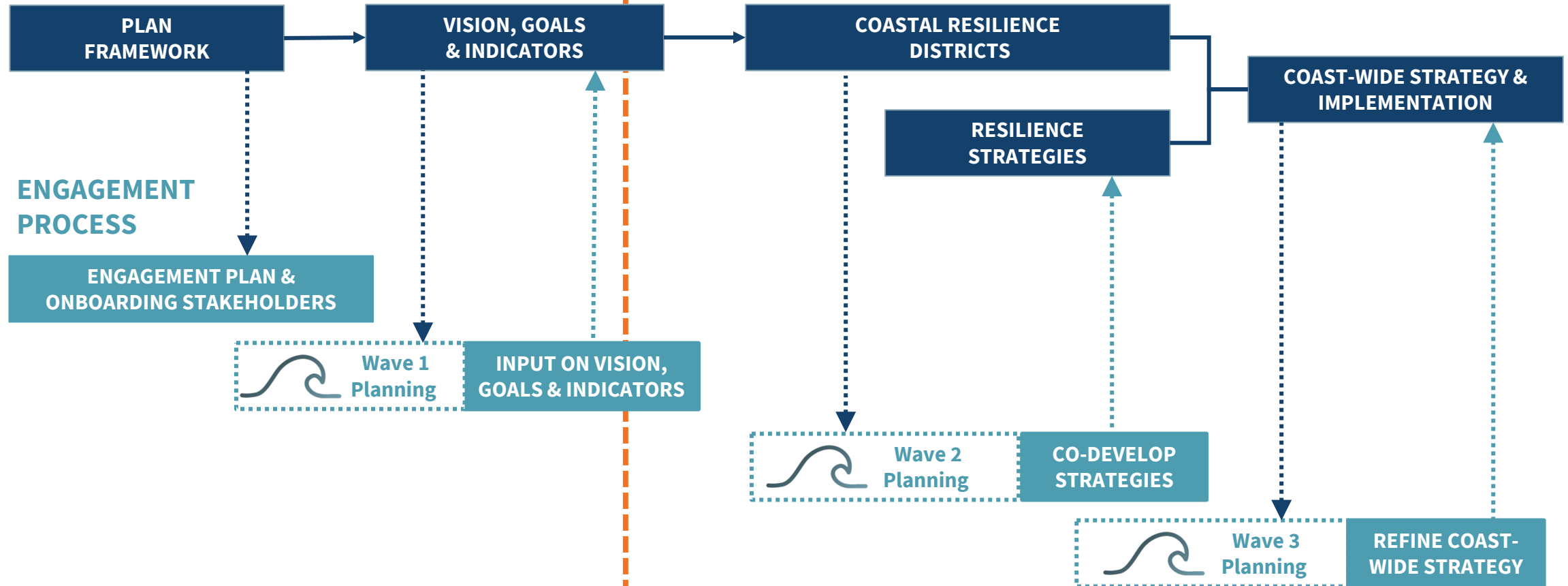
FALL 2023

WINTER 2024

SPRING 2024

SUMMER 2024

## TECHNICAL PROCESS





# APPROACH TO THIS PLAN

## INPUT

COLLECT  
EXISTING  
STRATEGIES

GATHER INPUT  
ON WHAT TO  
AMPLIFY &  
WHAT IS MISSING



## ANALYZE

ANALYZE  
STRATEGIES

+

EVALUATE  
AGAINST GOALS  
& INDICATORS



## DEVELOP

DEVELOP A  
COAST-WIDE FRAMEWORK  
FOR APPLYING STRATEGIES  
ALONG THE COAST

DEVELOP  
RECOMMENDATIONS FOR  
NEW STRATEGIES TO  
ADDRESS GAPS

# WHAT ARE COASTAL RESILIENCE DISTRICTS?

Geographic regions that have different landscape characteristics and face different climate hazards:

**THE POINT/EL PUNTO  
SALEM**



**SCONTICUT NECK  
FAIRHAVEN**



**SANDY NECK BEACH  
BARNSTABLE**



• • •  
and more

# WHAT FACTORS MAY BE CONSIDERED IN CREATION OF DISTRICTS?

## PRIMARY



### NATURAL RESOURCES

- Existing coastal wetlands
- Potential future coastal wetlands



### COASTAL EROSION

- Shoreline change
- Coastal bank loss
- Seawalls and other coastal structures



### LAND USE & ECONOMY

- Density of development



### COASTAL FLOODING

- Near-term
- Long-term

## SECONDARY



### ENVIRONMENTAL JUSTICE

- State defined criteria



### HISTORIC & CULTURAL RESOURCES

- As defined by state inventory





## NATURAL RESOURCES

Low

Medium

High

## LAND USE & ECONOMY

High density

Medium density

Low density

## COASTAL EROSION

Stable

Eroding

Eroding

## COASTAL FLOODING

Moderate

High

Moderate

## ENVIROMENTAL JUSTICE

Yes

No

No

## HISTORIC & CULTURAL RESOURCES

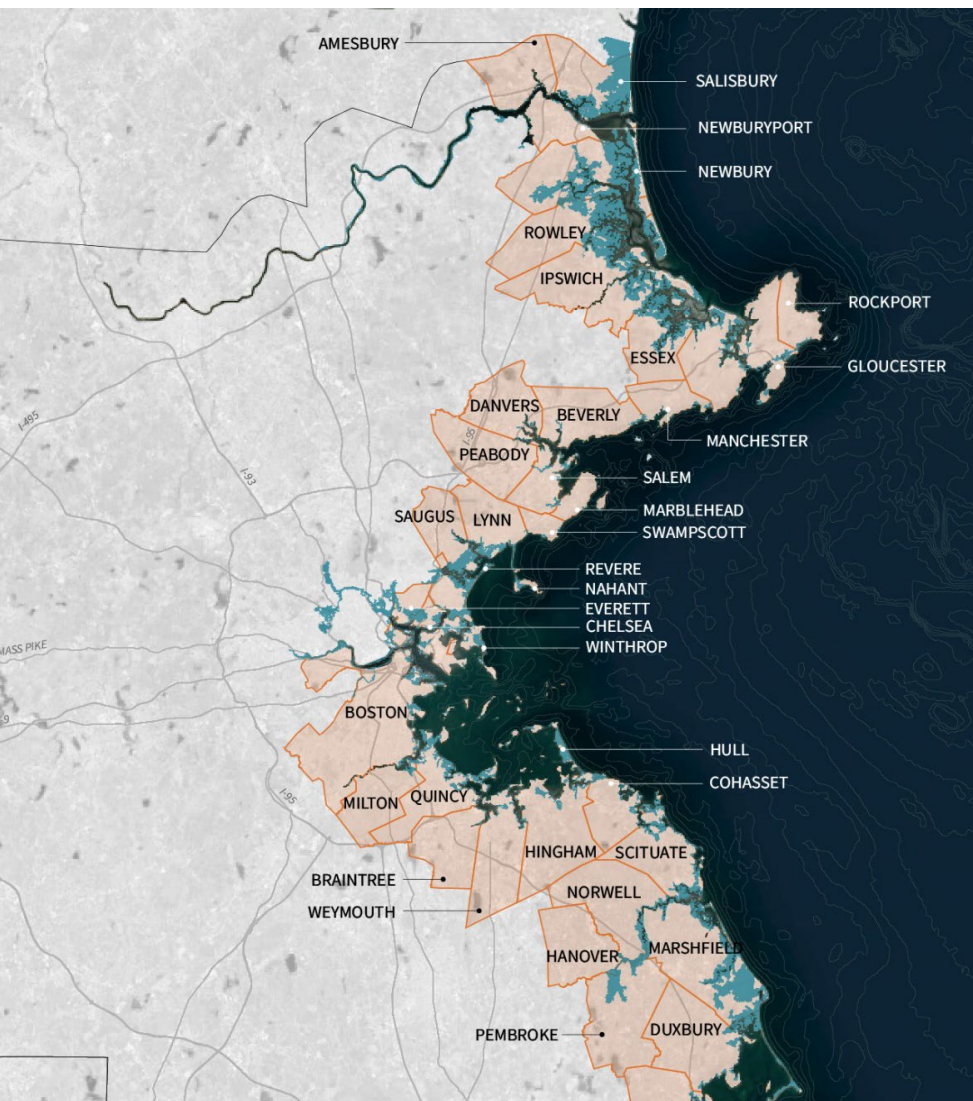
Yes

Yes

Yes

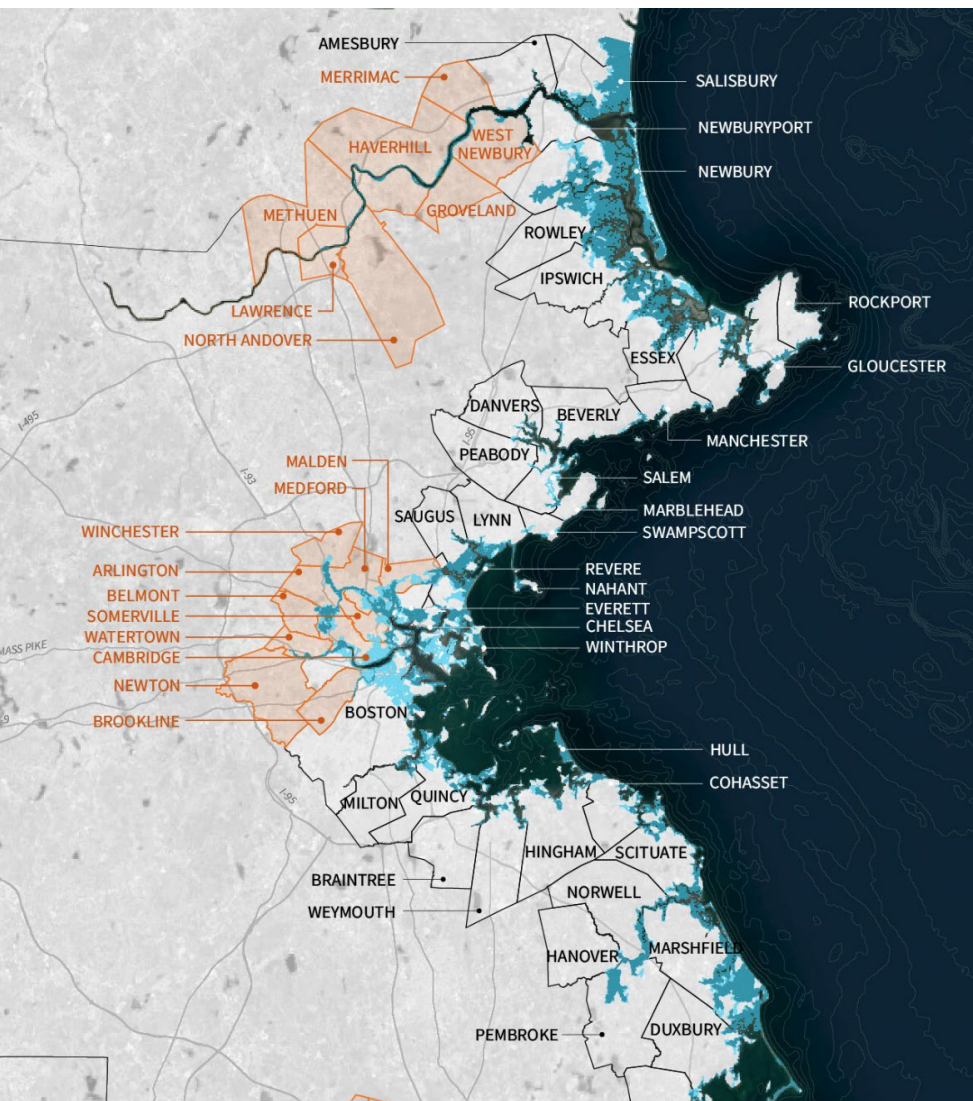


# 2030 COASTAL FLOOD RISK





# 2070 COASTAL FLOOD RISK



# **Vision for a Resilient Massachusetts Coast**

## What does “Coastal Resilience” mean?

The ability to **prepare for, recover from,** and **adapt to** increased coastal flooding, coastal erosion, and associated impacts.



# GOALS FOR A RESILIENT COAST

**GOAL 1:** Improve **human health and safety**

**GOAL 2:** Protect and enhance the value of **natural and cultural resources**

**GOAL 3:** Increase resiliency of **built infrastructure functions**

**GOAL 4:** Strengthen the **coastal economy**

**GOAL 5:** Advance **equity** and **environmental justice**

**GOAL 6:** Support the **capacity of coastal communities**

## DISCUSSION IN BREAKOUT GROUPS

### Questions:

- What should ResilientCoasts strategies achieve?
- How will we measure our progress towards these goals?

### Process:

- Join facilitated breakout groups
- Review preliminary "indicators" of success for each goal
- Share your ideas and feedback on what progress towards that goal looks like
  - Use Mentimeter (you will receive a link in your breakout)

# **Goal 1:**

## **Improve Human Health & Safety**

# Improve Human Health & Safety

- Reliable health care and emergency services during and after storms
- Community networks check in on each other and provide support during and after storms
- Communities have emergency plans and people know what to do, regardless of language and internet access
- Limited exposure to flooding health hazards like mold and combined sewer overflows

The indicators to the left are some initial ideas on how to measure progress towards this goal.

- **What does this goal mean specifically for you and your community?**
- **Which of the above indicators are the most important for you?**
- **Have we missed anything?**

You can use the **online survey** on the website to provide your input.



**Goal 2:**  
**Protect and enhance the value of  
natural and cultural resources**

# Protect and enhance the value of natural and cultural resources

- Functions and value of coastal wetlands protected and expanded
- Reduced coastal erosion and protected dune habitats
- Healthy marine environments support biodiversity
- Diverse set of important historical, cultural, and recreational resources preserved
- Equitable access to coastal resources
- Nature-based solutions are easily deployed where applicable across the coast

The indicators to the left are some initial ideas on how to measure progress towards this goal.

- **What does this goal mean specifically for you and your community?**
- **Which of the above indicators are the most important for you?**
- **Have we missed anything?**

You can use the **online survey** on the website to provide your input.

**Goal 3:**  
**Increase the resilience of built  
infrastructure**

# Increase the resilience of built infrastructure

- Roads, paths, and sidewalks resilient to flooding and erosion, especially evacuation routes
- Public transit resilient to flooding and erosion
- Housing resilient to flooding and erosion
- Essential buildings and structures resilient to flooding and erosion
- Reliable access to electricity and internet during storms
- Water supply and wastewater treatment systems resilient to flooding and saltwater contamination

The indicators to the left are some initial ideas on how to measure progress towards this goal.

- **What does this goal mean specifically for you and your community?**
- **Which of the above indicators are the most important for you?**
- **Have we missed anything?**

You can use the **online survey** on the website to provide your input.



# **Goal 4:**

## **Strengthen the coastal economy**

# Strengthen the coastal economy

- Small businesses have access to flood recovery resources
- Coastal infrastructure supports blue economy (e.g., seafood industries, offshore wind)
- Communities have skills and opportunities to capitalize on the economic benefit of resilience work
- Coastal economies transition successfully in resilient sectors or alternative locations
- Commercial and industrial areas resilient to flooding and erosion

The indicators to the left are some initial ideas on how to measure progress towards this goal.

- **What does this goal mean specifically for you and your community?**
- **Which of the above indicators are the most important for you?**
- **Have we missed anything?**

You can use the **online survey** on the website to provide your input.

**Goal 5:**  
**Advance Equity and**  
**Environmental Justice**

# Advance Equity and Environmental Justice

- Actions reduce existing inequities in climate change burden
- Accessible public conversations on resiliency for all community members
- Avoided unintended consequences (e.g., displacement due to housing price increases) from resiliency improvements
- Environmental Justice and other priority populations' inputs centered in resiliency planning
- Coastal planning respects indigenous residents' relationship to and knowledge of resources
- Housing that is affordable is resilient to flooding and erosion

The indicators to the left are some initial ideas on how to measure progress towards this goal.

- **What does this goal mean specifically for you and your community?**
- **Which of the above indicators are the most important for you?**
- **Have we missed anything?**

You can use the **online survey** on the website to provide your input.

**Goal 6:**  
**Support the capacity of  
coastal communities**



# Support the capacity of coastal communities

- All communities have access to expertise in coastal resiliency issues
- Local decision makers and community leaders have the capacity to access funding opportunities
- Affected communities are centered and given resources to partner in local efforts
- Governments and organizations collaborate on implementing regional strategies where needed
- Cities and towns have the technical and financial capacity to explore more complex adaptation strategies (e.g., managed retreat)
- Coastal municipalities maintain stable finances through shifts in tax bases

The indicators to the left are some initial ideas on how to measure progress towards this goal.

- **What does this goal mean specifically for you and your community?**
- **Which of the above indicators are the most important for you?**
- **Have we missed anything?**

You can use the **online survey** on the website to provide your input.

# Next Steps

# WHAT'S COMING NEXT?

**WE WILL USE YOUR INPUT TO REFINE “INDICATORS” TO HELP US EVALUATE PROGRESS TOWARDS THE PLAN GOALS -- THANK YOU FOR YOUR FEEDBACK!**

**LOOK FOR A SURVEY COMING TO SHARE MORE INPUT AT THIS PHASE (AND SHARE WITH OTHERS)**

- Shared by email with registrants and via outreach channels

## WHAT'S COMING NEXT?

- We will convene a meeting this spring to discuss strategies for a resilient coast
- For more info: <https://www.mass.gov/info-details/resilientcoasts-initiative>



**Thank you!**