

ResilientCoasts

PUBLIC MEETING #3



ResilientCoasts

MARCH 3, 2025

AGENDA

- **WELCOME & PROJECT UPDATES**
- **NEAR-TERM ADAPTATION AREAS**
 - Purpose of near-term adaptation areas in ResilientCoasts framework
 - Sectoral and cross-sector analysis of risk/vulnerability
 - Q&A and feedback
- **STATE TOOLS AND ACTIONS: COASTWIDE STRATEGIES**
 - Review and provide input to prioritize potential strategies and actions
 - Q&A
- **NEXT STEPS**
 - Office Hours
 - Draft Plan – Review and Comment

GUIDING PRINCIPLES FOR TODAY'S DISCUSSION

- **Be present**
- **Assume good intentions and be mindful of impact**
- **Be open to another perspective**
- **Make space/take space**
- **No technical expertise needed to participate. No question is bad or silly to ask.**

ASK QUESTIONS IN Q&A AT ANY TIME (WE'LL RESPOND AS WE ARE ABLE)!

(Re)introduction to the ResilientCoasts Plan

RESILIENTCOASTS PLAN OVERVIEW

- **Purpose:** Develop a comprehensive framework for coastwide resilience to guide state & local coastal resilience policy & and management actions
- **Process:**
 - ***Describe a vision/goals*** & metrics for a resilient coast
 - ***Map geographic zones*** of climate vulnerability - “coastal resilience districts” (long term) and "near-term adaptation areas"
 - ***Evaluate current & new strategies*** and how they could be applied at different scales – local, regional/district, coast-wide
 - ***Develop recommendations*** to guide resilience action in vulnerable areas at state & local levels
- **Throughout - stakeholder engagement and coordination:**
 - Internal Agency Working Group, External Task Force
 - Public meetings (like this one), surveys, focus groups/interviews

GOALS FOR A RESILIENT COAST

GOAL 1: Improve **human health and safety**

GOAL 2: Protect and enhance the value of **natural and cultural resources**

GOAL 3: Increase resiliency of **built infrastructure functions**

GOAL 4: Strengthen the **coastal economy**

GOAL 5: Advance **equity** and **environmental justice**

GOAL 6: Support the **capacity of coastal communities**

PROJECT UPDATES

CONCLUDED WAVE 2 – REFINED COASTAL RESILIENCE DISTRICTS AND COASTAL TYPOLOGIES, GATHERED INPUT TO DEVELOP COASTWIDE STRATEGIES AND STATE ACTIONS

- **3 External Task Force, 3 Internal Working Group, 2 public meetings, public survey, focus groups**

ADVANCED TECHNICAL WORK OVER FALL AND WINTER

- **Developed methodology for sectoral analysis of near-term adaptation areas**
- **Refined coastal typologies and guidance on suitable measures**
- **Developed draft coastwide strategies and priorities for state action**

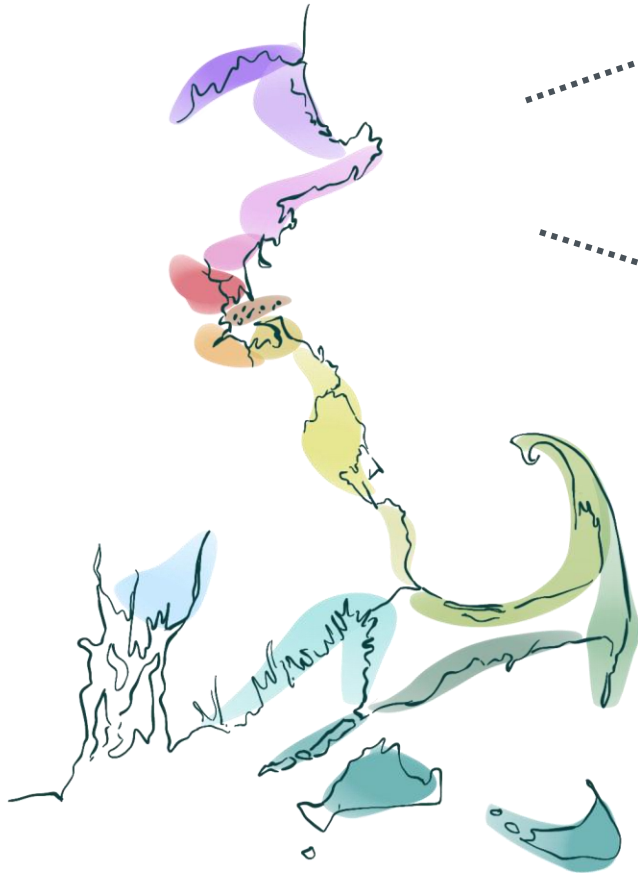
FORTHCOMING PLAN

- **Anticipate draft for public comment this spring**

APPROACH TO THIS PLAN

COASTAL RESILIENCE DISTRICTS

(driven by natural resources, watersheds, and coastal hazards)



NEAR-TERM ADAPTATION AREAS

(people, housing, public infrastructure, and economic resources)

COASTAL TYPOLOGIES

(different types of coastal environments, land use, and development)



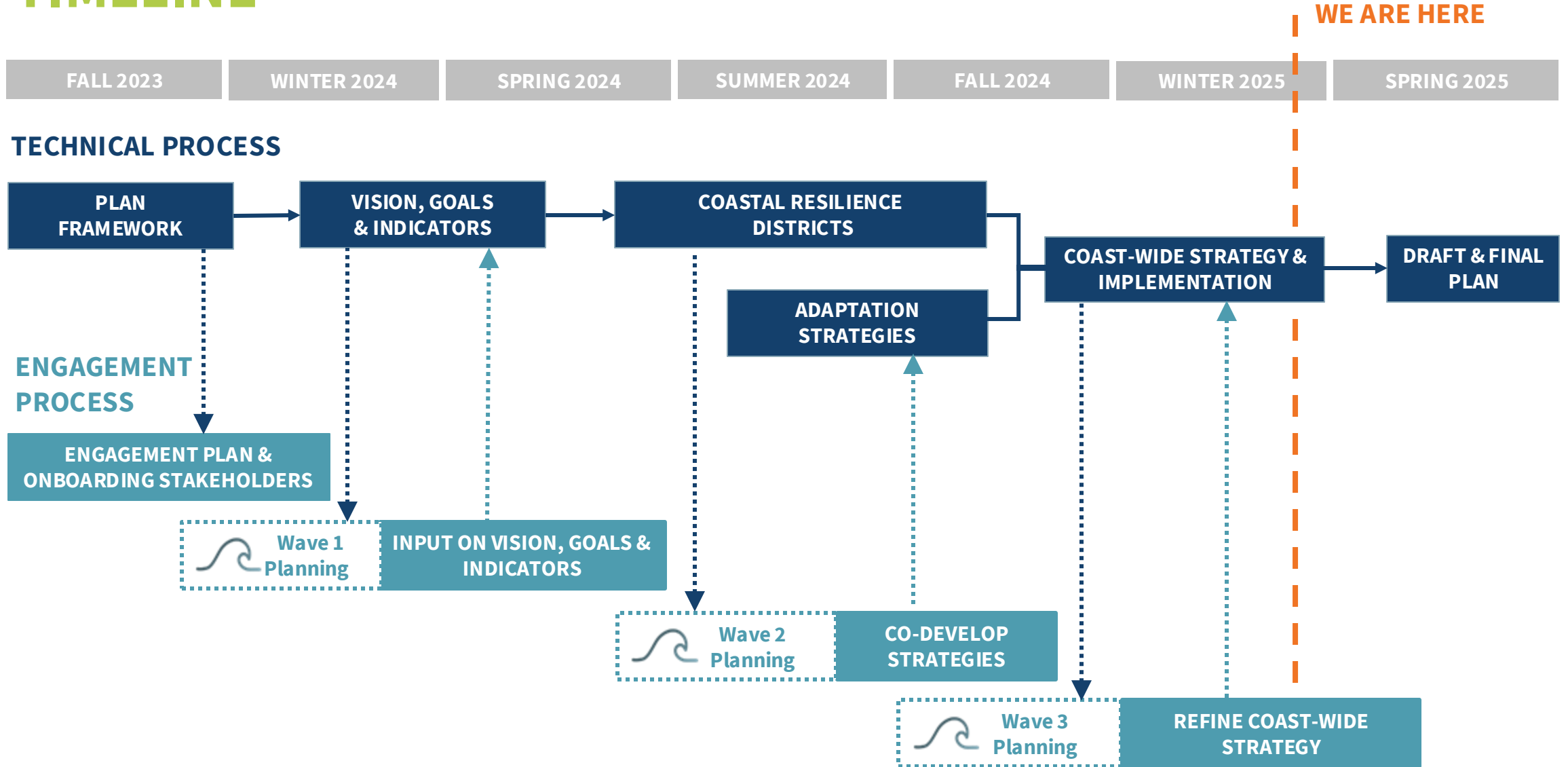
COAST-WIDE STRATEGIES

(state-led policy, regulatory, financing, and other levers)

PLACE-BASED STRATEGY GUIDANCE

(suitable resilience measures based on coastal hazards and typology)

TIMELINE

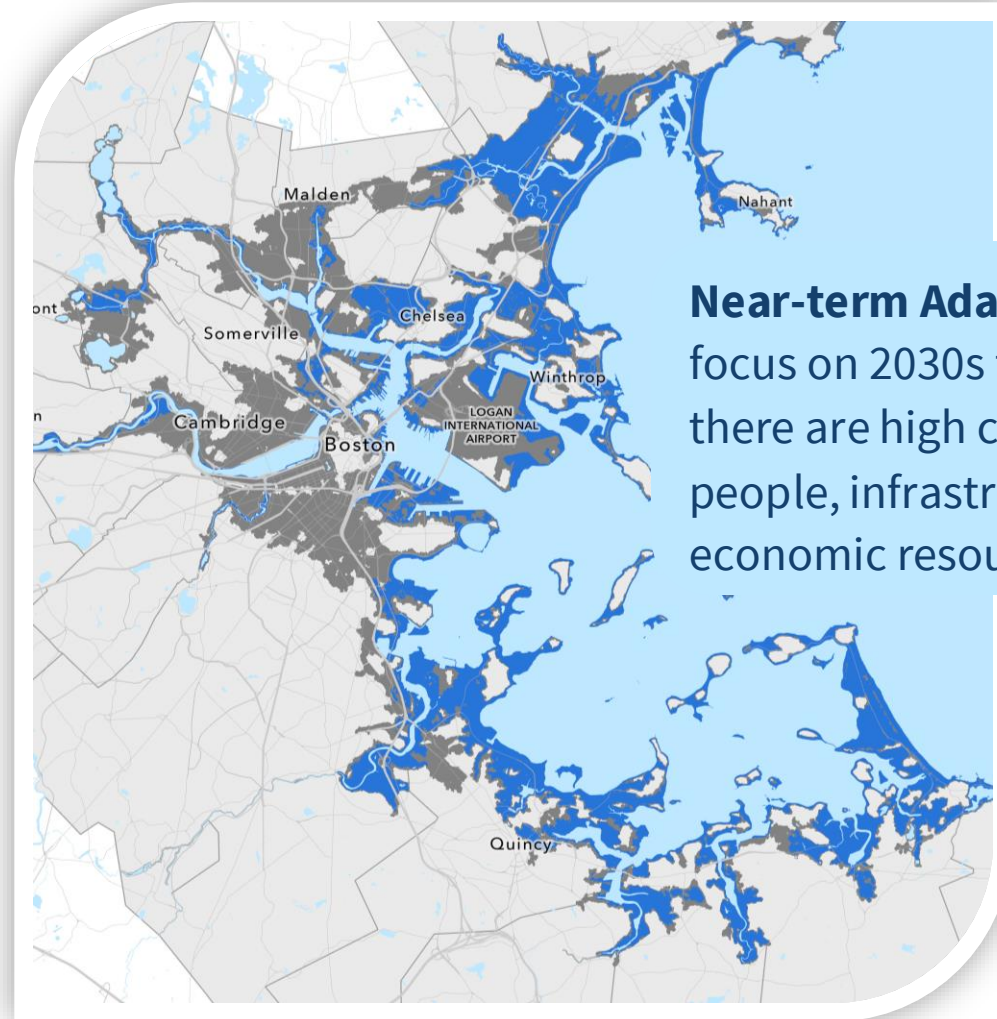
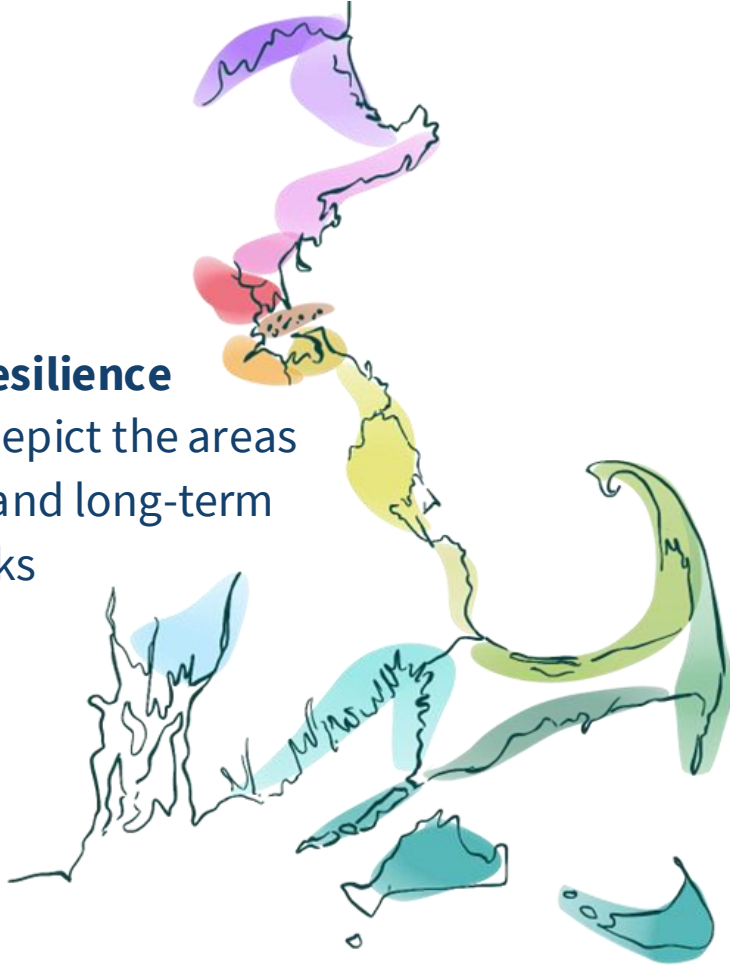


Near-term Adaptation Areas

HOW NEAR-TERM ADAPTATION AREAS FIT IN

Coastal Resilience

Districts depict the areas with near and long-term coastal risks



Near-term Adaptation Areas focus on 2030s flood risk where there are high concentrations of people, infrastructure, and economic resources

PURPOSE OF NEAR-TERM ADAPTATION AREAS

- Identify coastwide where there is a confluence of people, housing, infrastructure, and economic resources **exposed to near-term (2030) coastal hazard risk**
- Help inform **district-level prioritization** for public and private resources and intervention
- Help educate communities and other stakeholders about coastwide risk and **how their vulnerability compares** to larger district and region

SECTOR-BASED APPROACH FOR NEAR-TERM ADAPTATION AREAS



PEOPLE & HOUSING



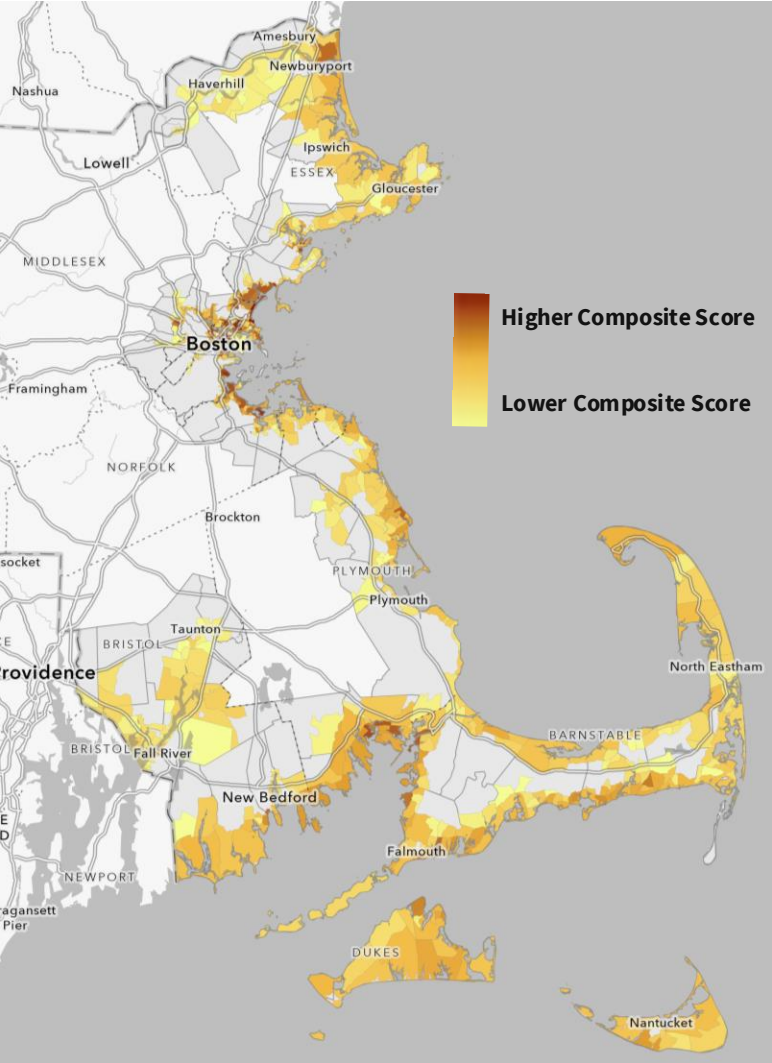
**BUILT INFRASTRUCTURE
& SERVICES**



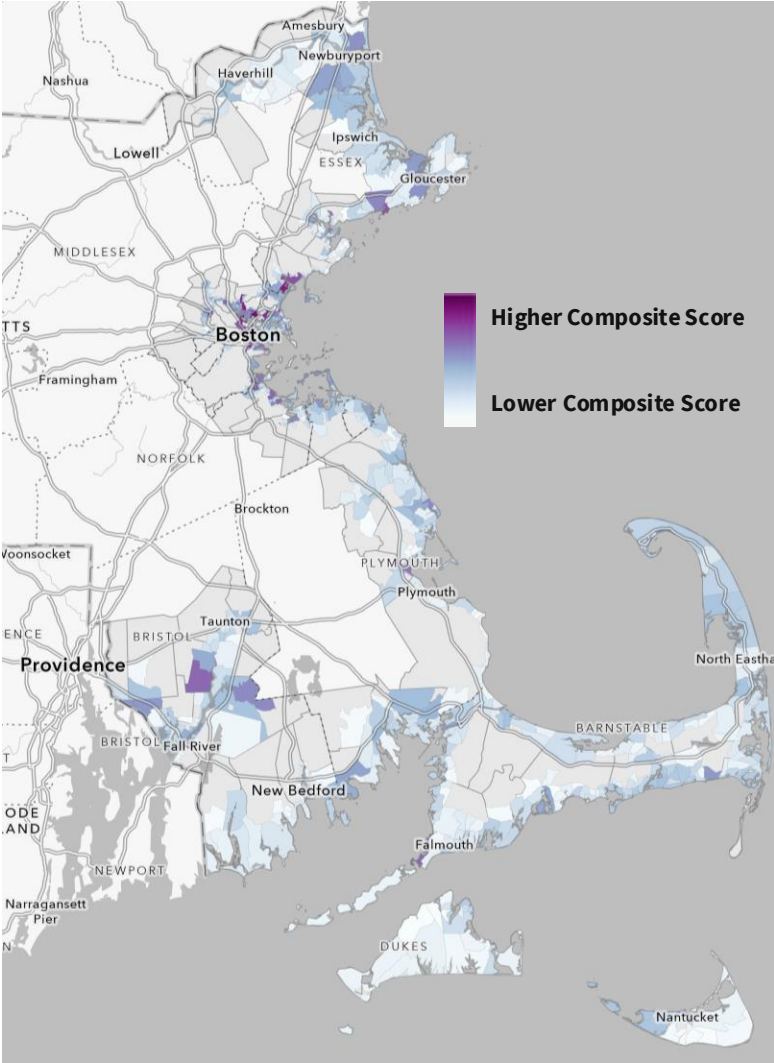
ECONOMY

SECTOR COMPOSITE SCORE MAPS – NEAR-TERM ADAPTATION

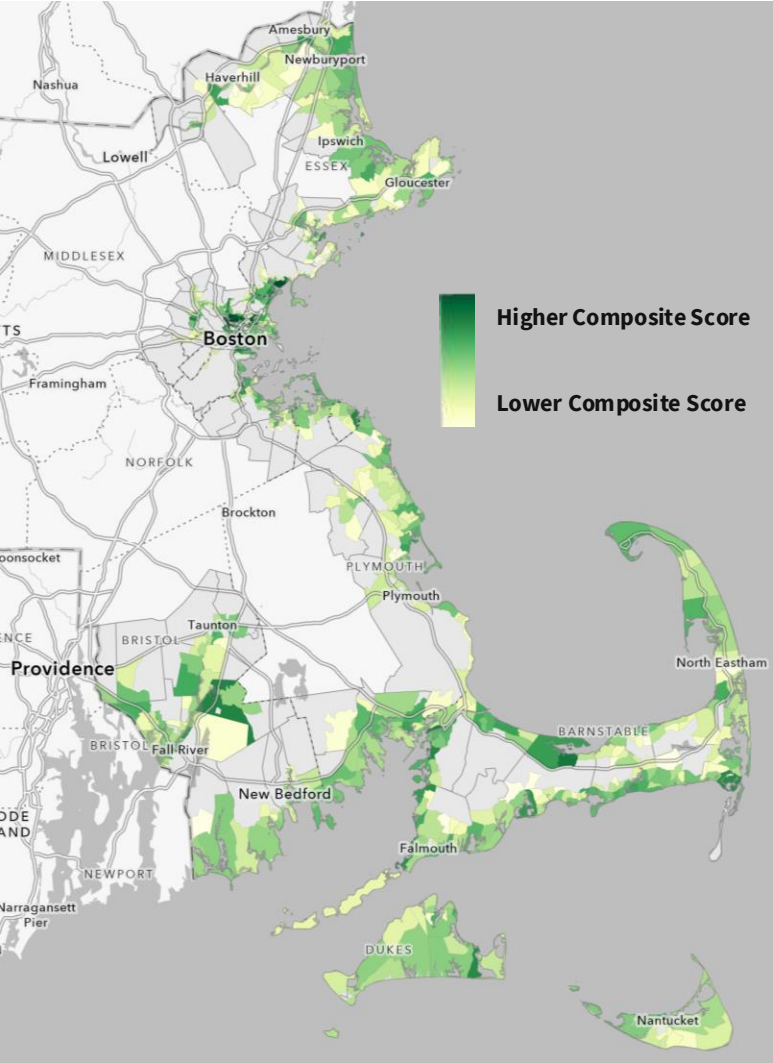
People & Housing, Coastwide Composite Score



Built Infrastructure, Coastwide Composite Score



Economy, Coastwide Composite Score

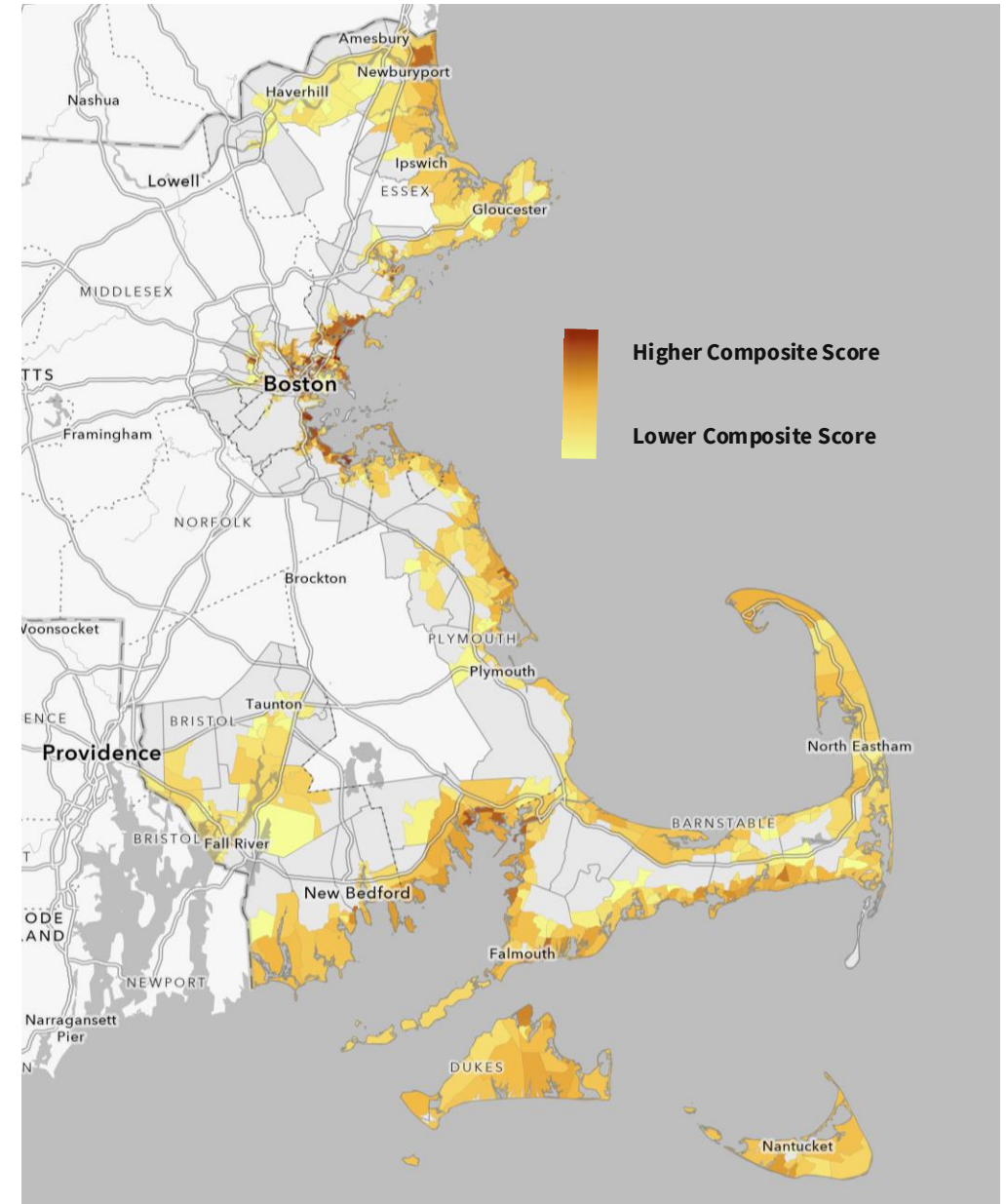


PEOPLE & HOUSING COMPOSITE SCORE:

DATA INPUTS

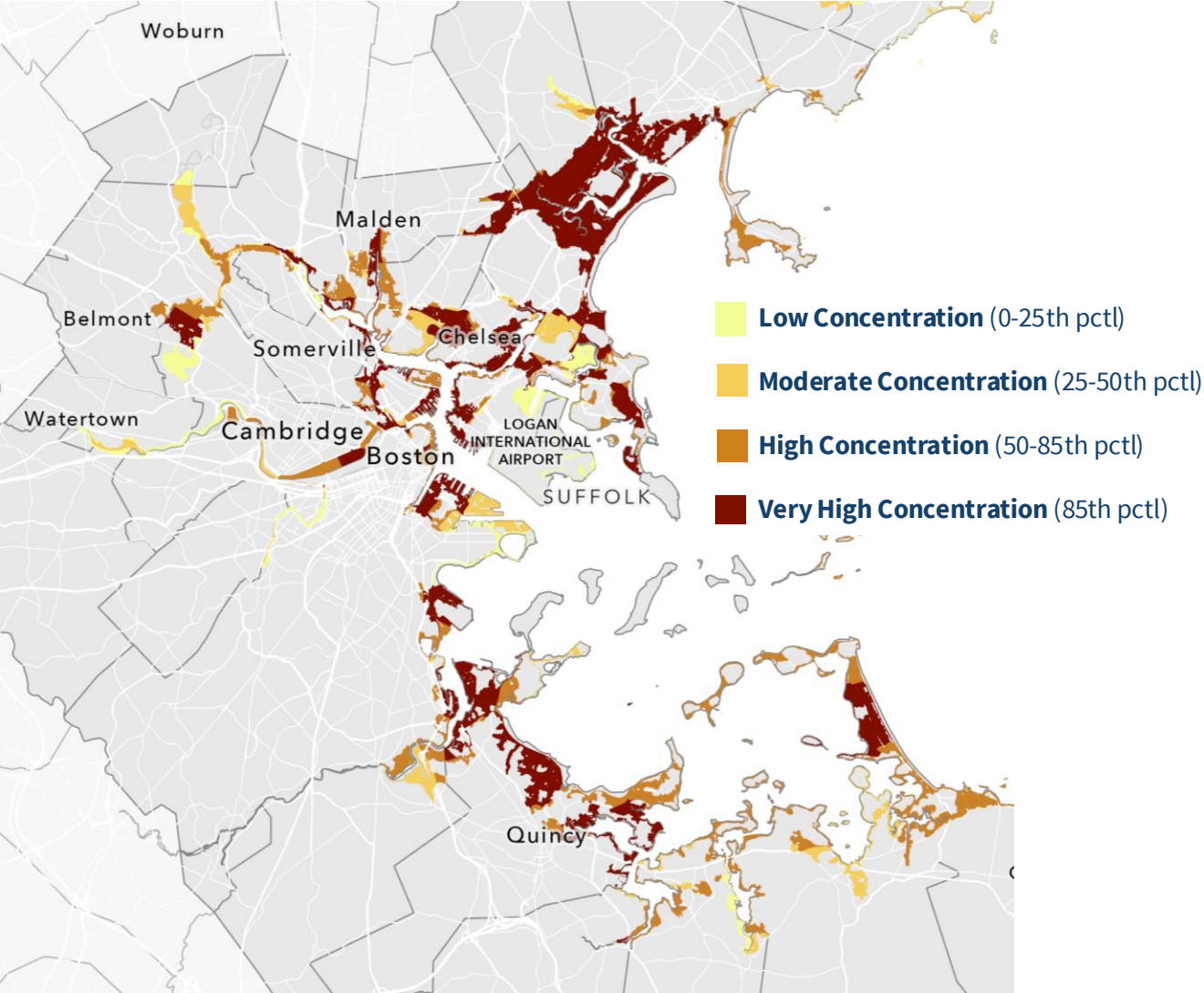
- Residential Building Value at Risk
- Affordable Housing at Risk
- Total People at Risk
- EJ Population at Risk

People and Housing, Coastwide Composite Score

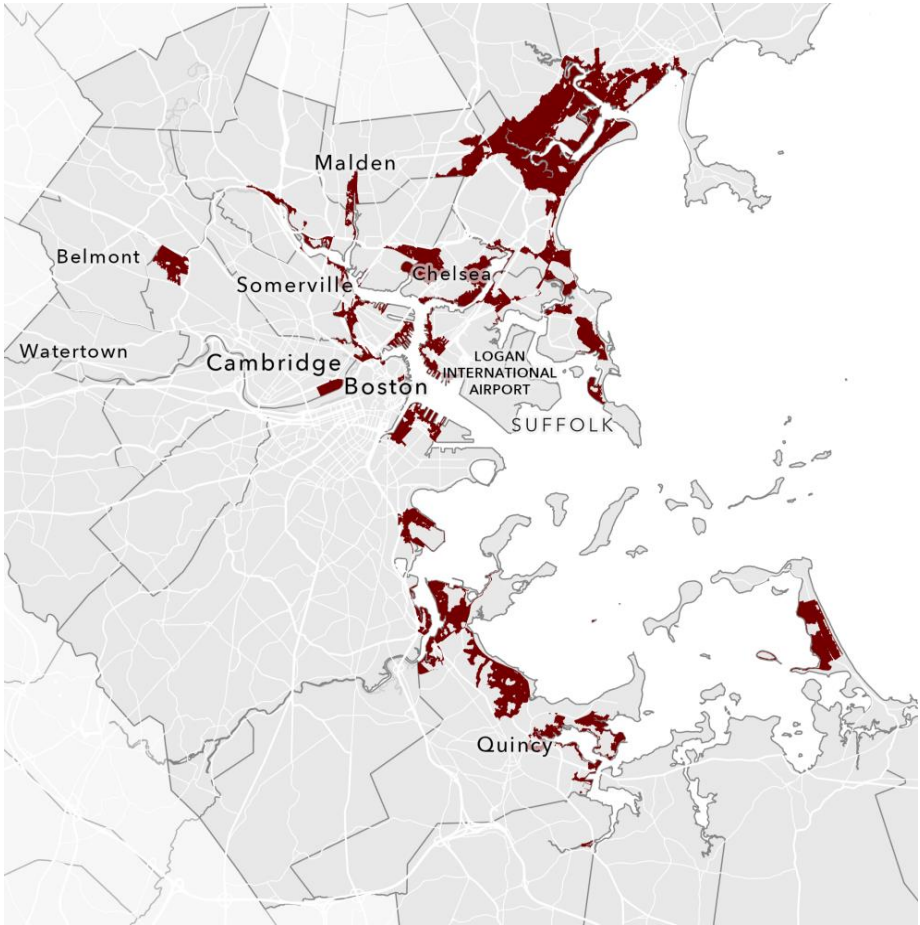


EXAMPLE: PEOPLE & HOUSING NEAR-TERM VULNERABILITY

Boston Harbor Relative Concentrations of Near-term Vulnerability



Boston Harbor Very High Concentration of Near-term Vulnerability

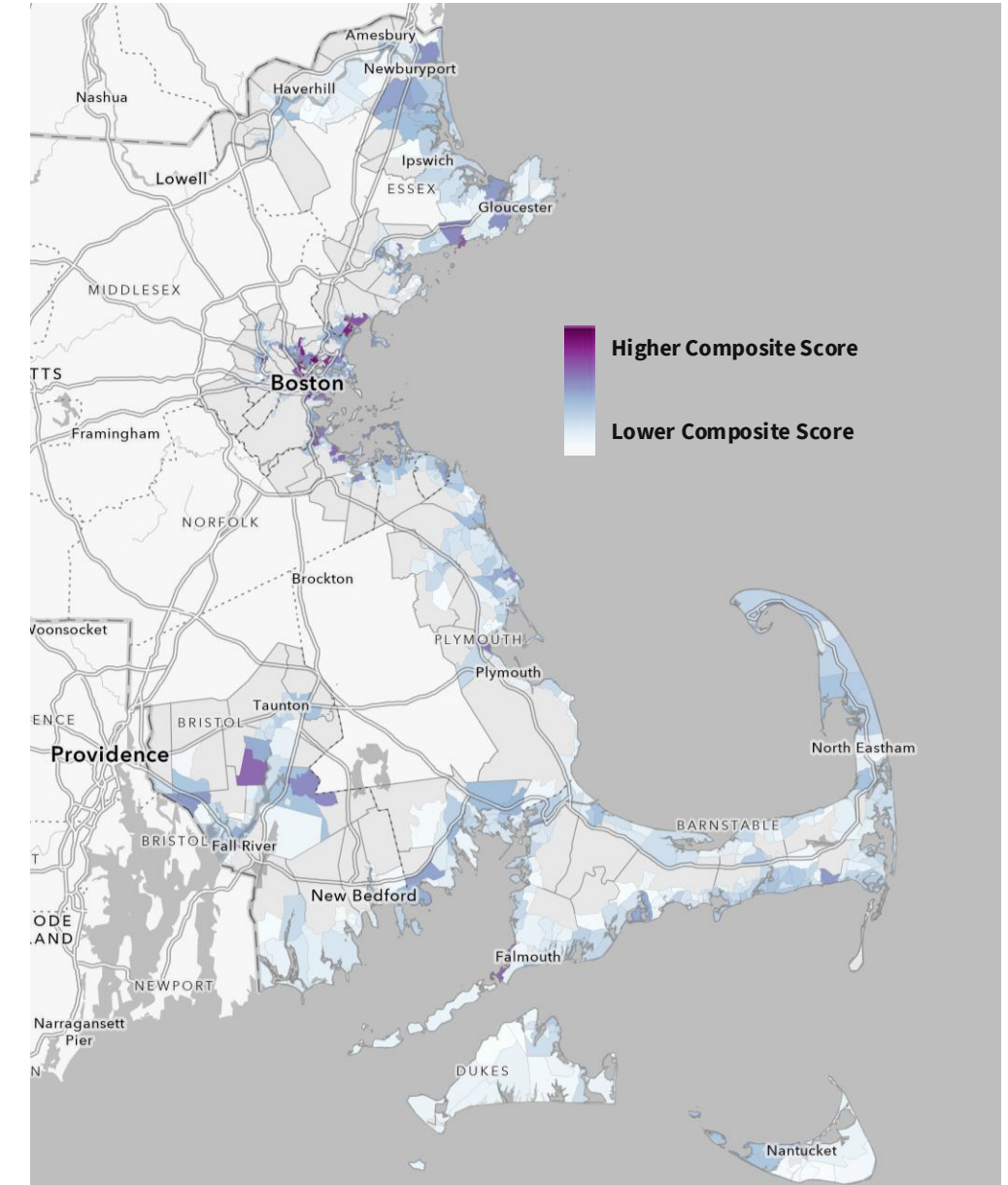


BUILT INFRASTRUCTURE COMPOSITE SCORE:

DATA INPUTS

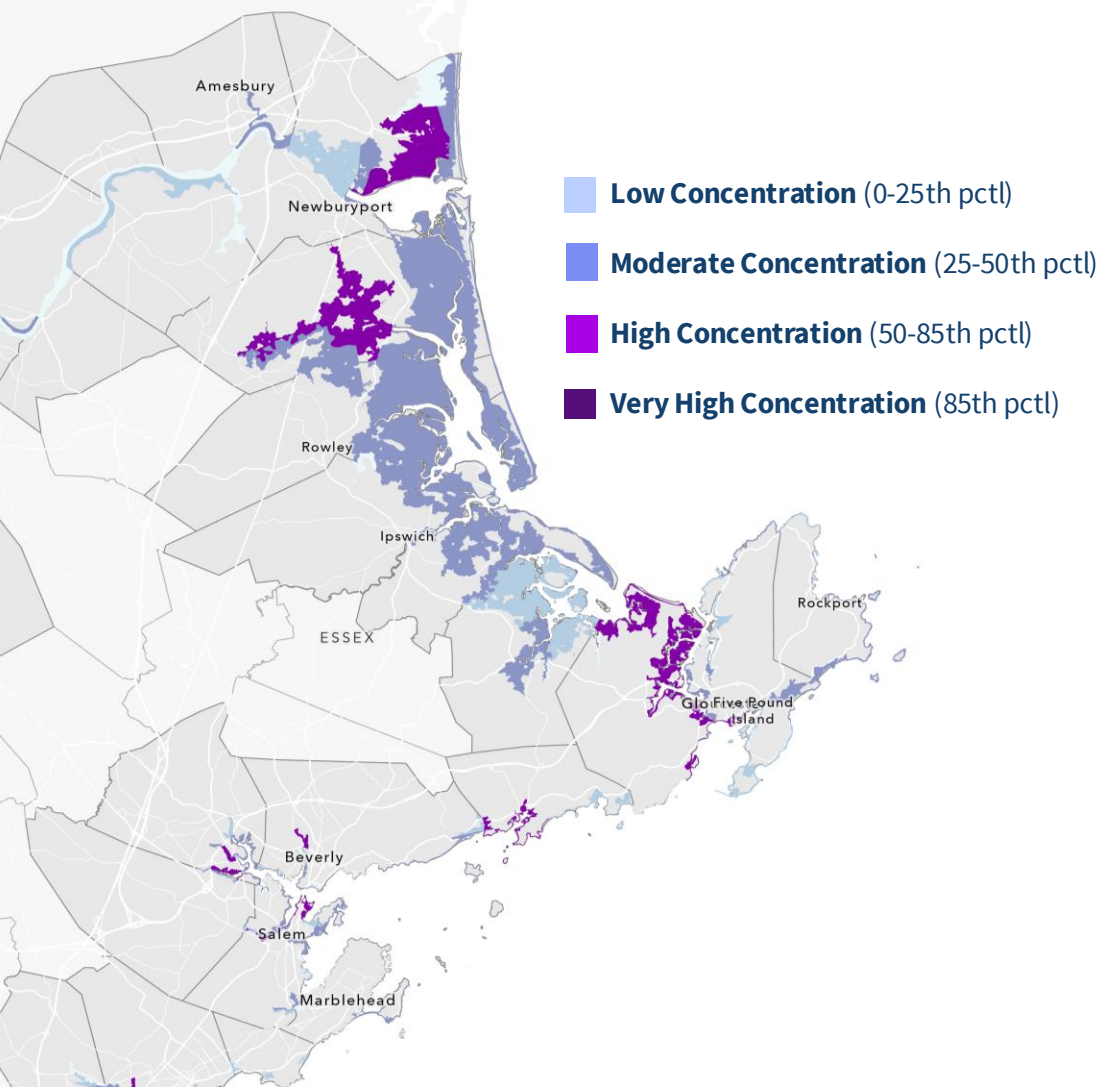
- Roads at Risk
- Transit assets at Risk
- Utility assets at Risk
- Public Infrastructure at Risk

Built Infrastructure, Coastwide Composite Score

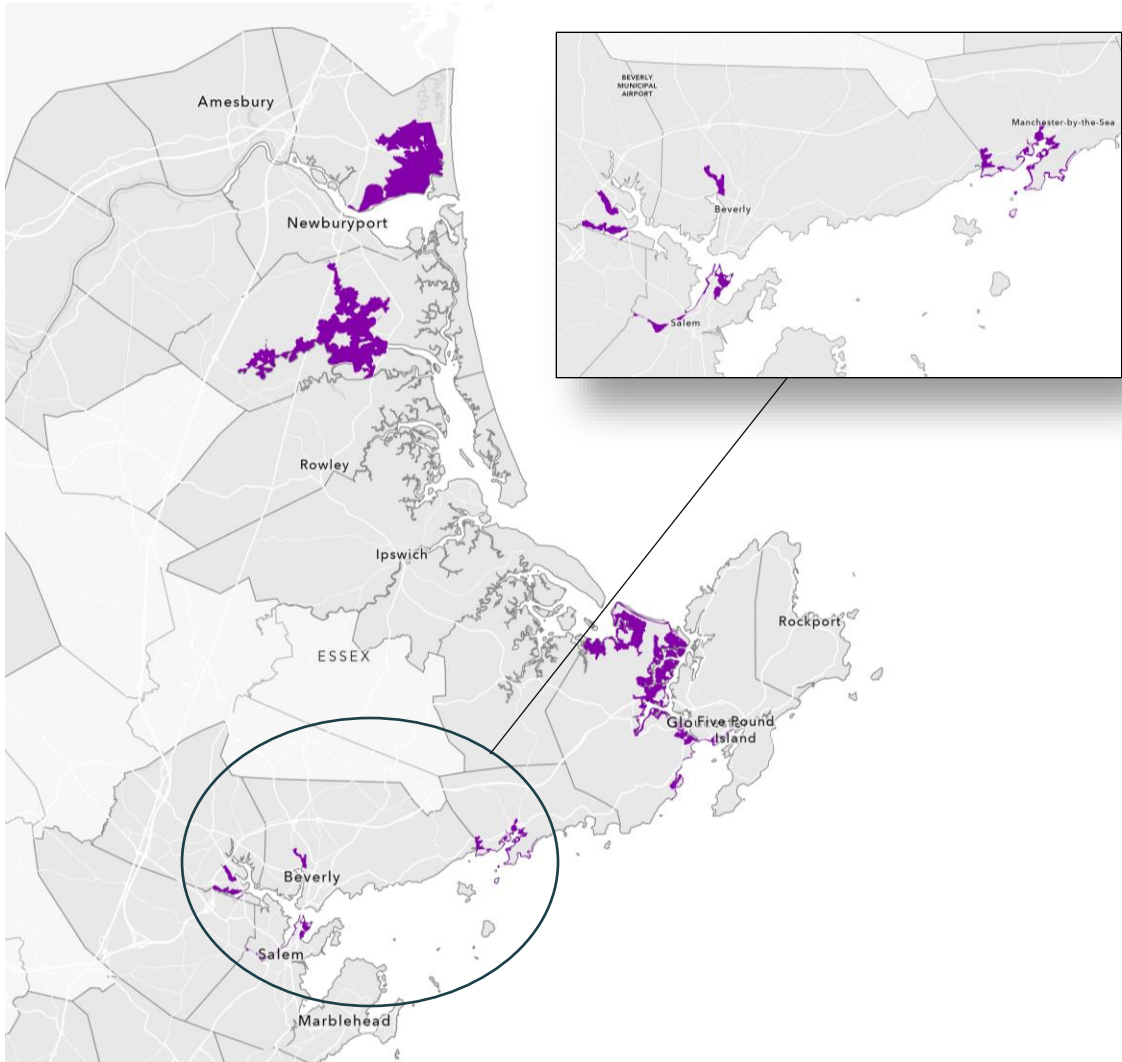


EXAMPLE: BUILT INFRASTRUCTURE NEAR-TERM VULNERABILITY

North Shore Relative Concentrations of Near-term Vulnerability



North Shore Very High Concentration of Near-term Vulnerability

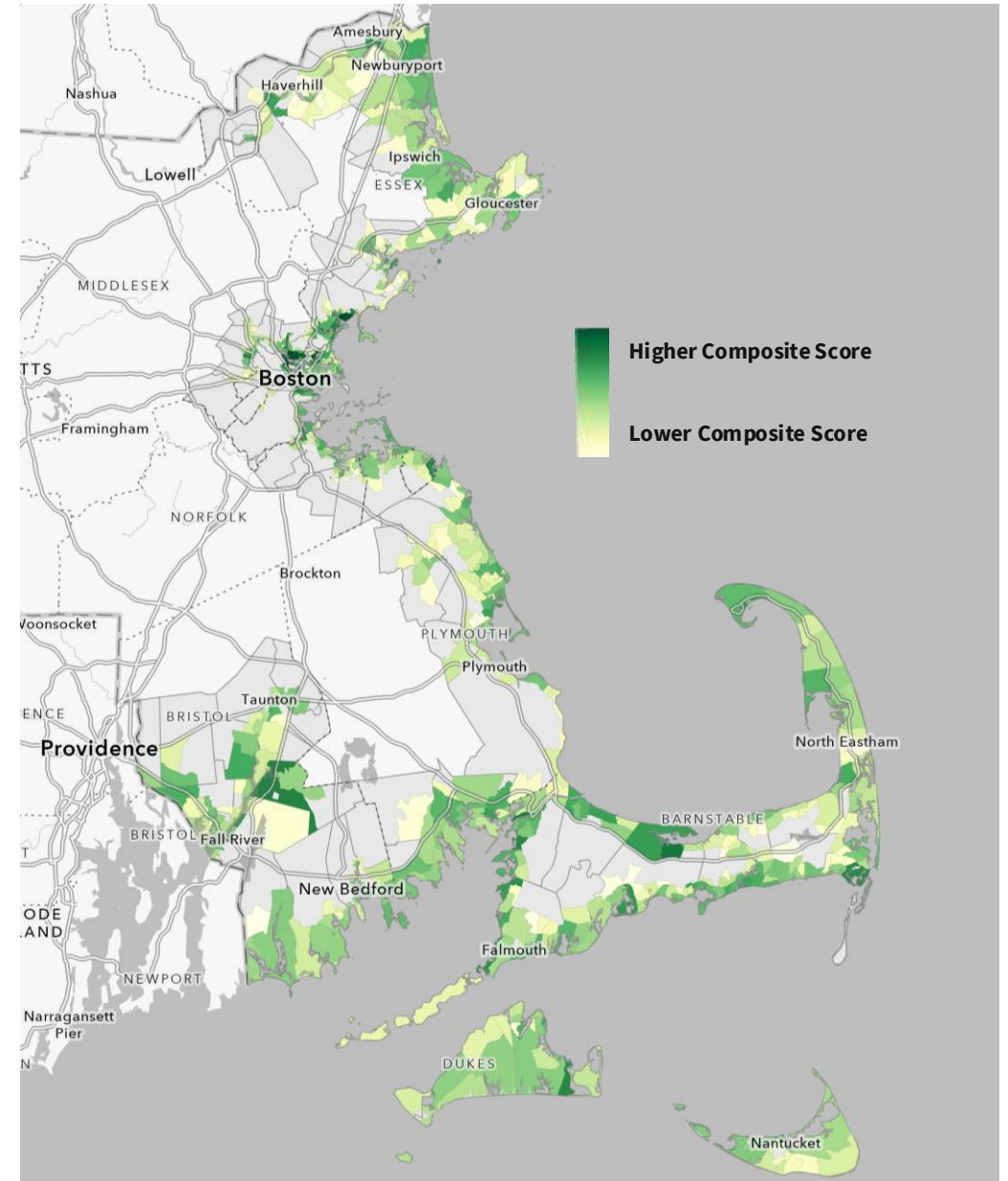


ECONOMY COMPOSITE SCORE:

DATA INPUTS

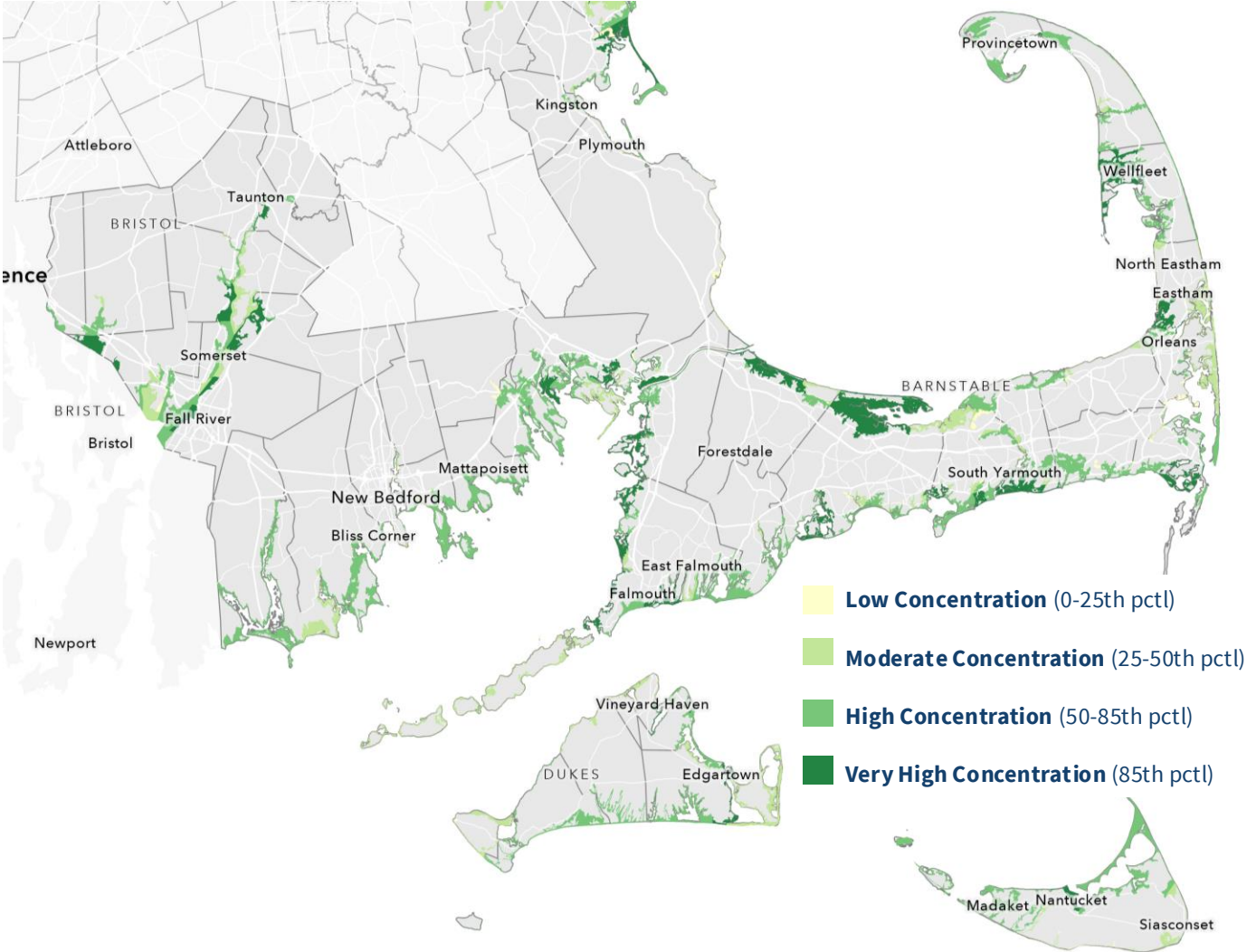
- **Commercial and Industrial Building Value at Risk**
- **Jobs at Risk**
- **Ports and Working Waterfronts at Risk**
- **Commercial Freight Rail Corridors at Risk**
- **Road at Risk (High Tide)**

Economy, Coastwide Composite Score



EXAMPLE: ECONOMY RISK NEAR-TERM VULNERABILITY

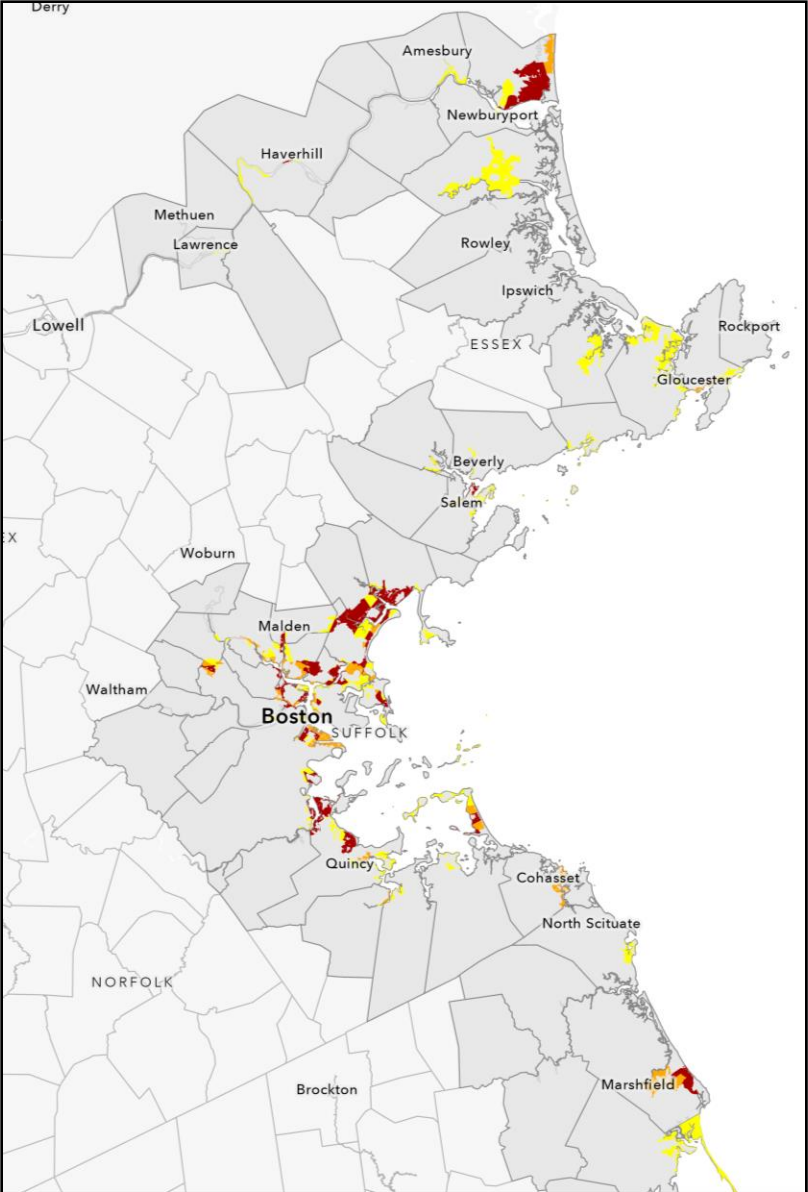
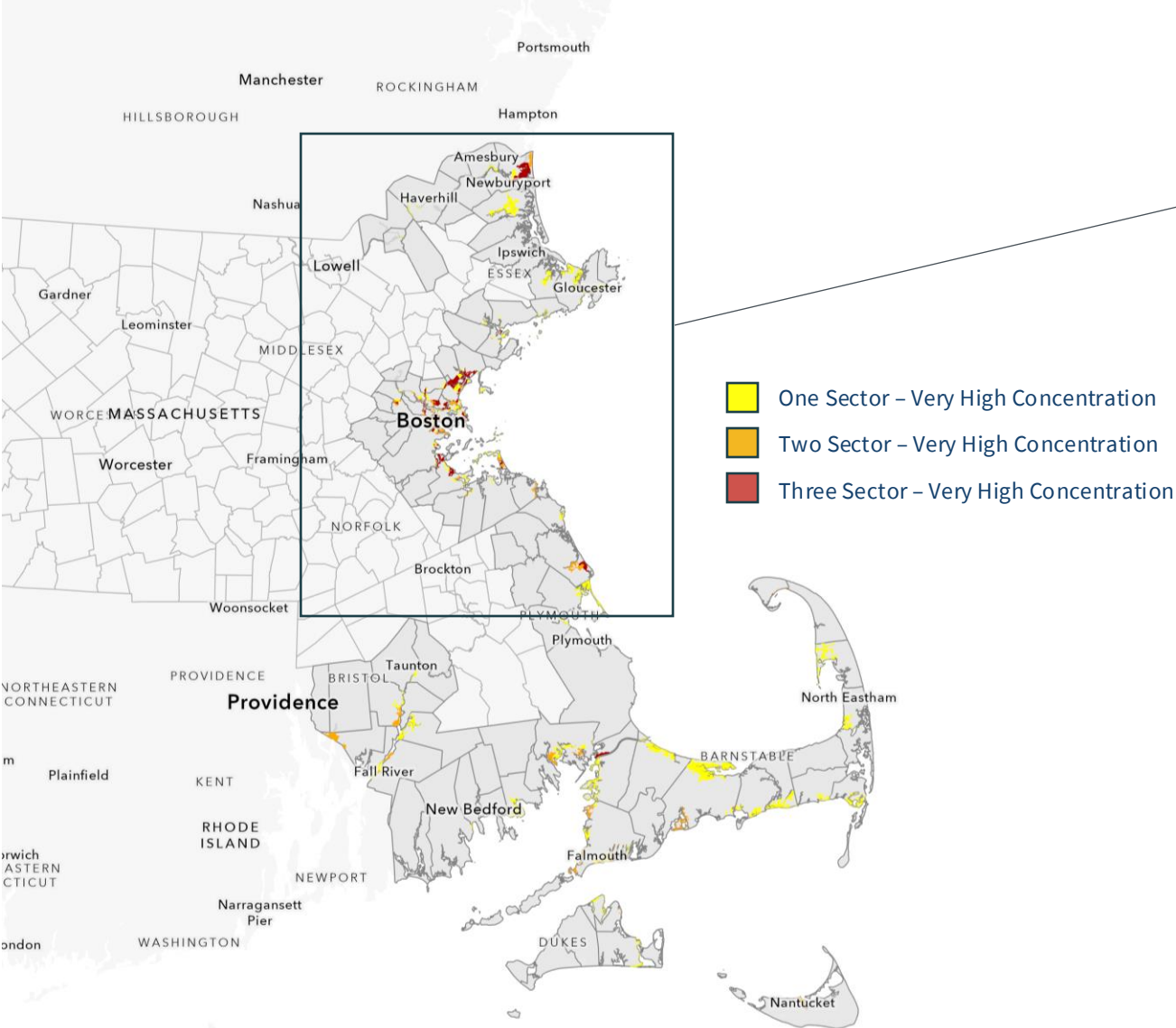
South Coast, Cape & Islands Relative Concentrations of Near-term Vulnerability



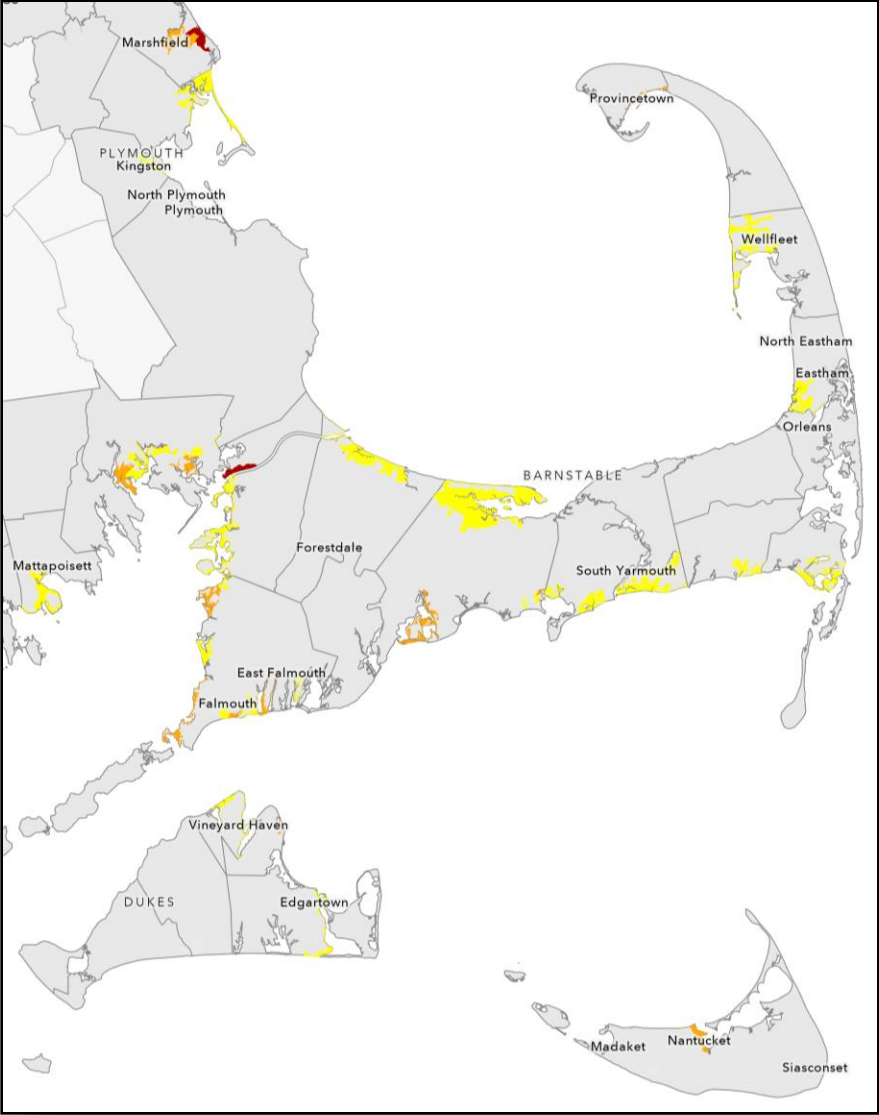
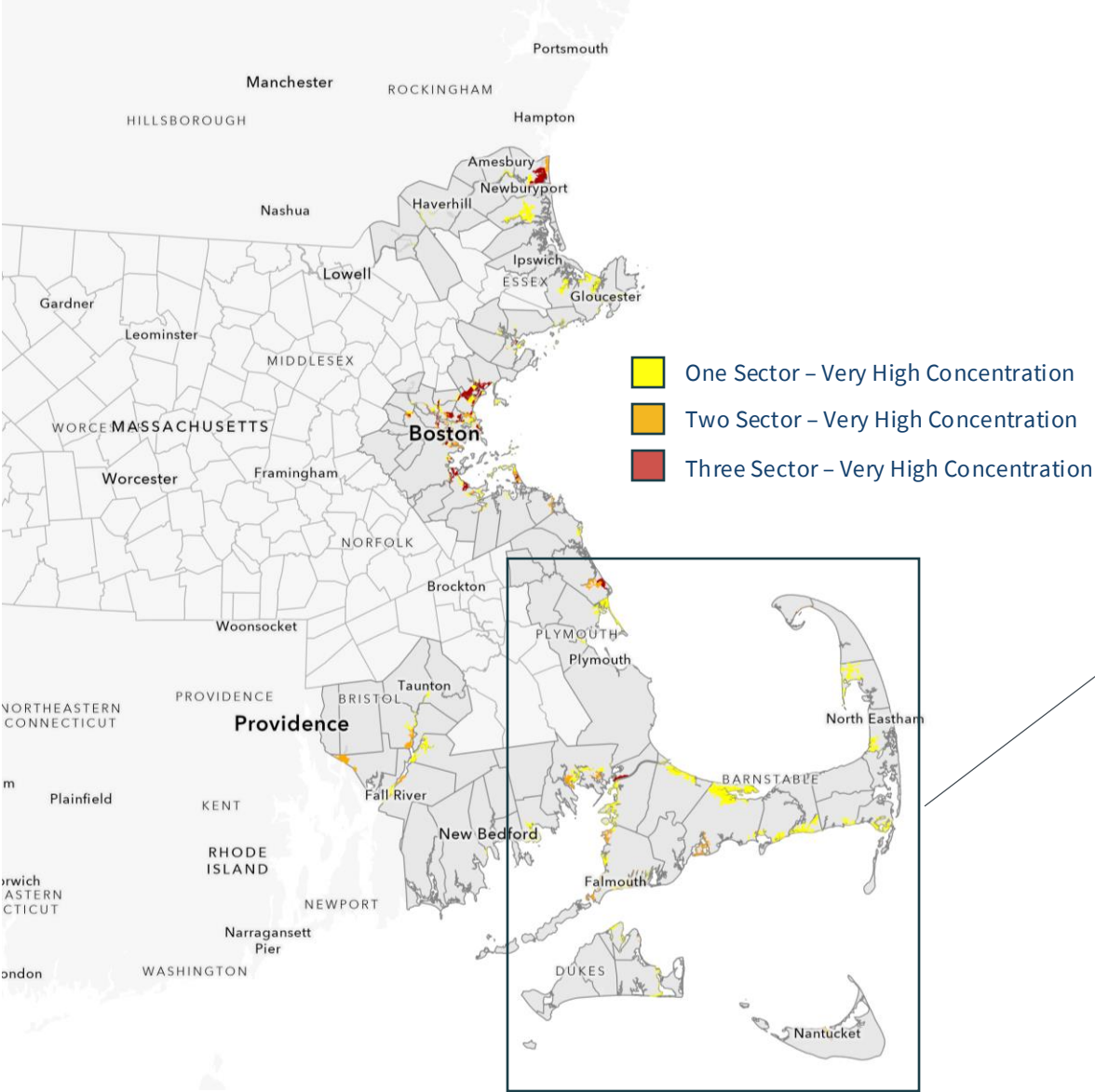
South Coast, Cape & Islands Very High Concentration of Near-term Vulnerability



CROSS-SECTOR NEAR-TERM VULNERABILITY



CROSS-SECTOR NEAR-TERM VULNERABILITY



State Tools and Actions: Coastwide Strategies for Resilience

DRAFT COASTWIDE STRATEGIES FOR RESILIENCE

What we heard from stakeholders on high priorities for state action:

1. **Reduce risks of coastal hazards to new and existing buildings and infrastructure**
 - Strengthen building code and design standards
 - Consider and plan for impacts from insurance industry
2. **Require state investments to be resilient and prioritize actions that have the greatest impact**
 - **EJ** communities
 - Critical **infrastructure**
 - Critical **habitats** and **ecological** functions
3. **Invest in protection, restoration, and enhancement of natural and cultural resources and support equitable access to the shoreline**
 - Prioritize nature-based approaches and value benefits of ecological restoration, e.g. salt marsh
 - Coordinate retreat with restoration and public access work
4. **Invest in and support local and regional efforts to increase resilience**
 - Streamlining **permitting** for high-priority resilience projects
 - Opportunities to try **innovative** approaches
 - **Funding** - increase, prioritize, and improve grants and funding for implementation projects
 - Improved local, regional, state, federal **coordination**
 - **Communication tools**

Next Steps

WHAT'S COMING NEXT?

- **MATERIALS SHARED TONIGHT WILL BE AVAILABLE AT** [[RESILIENTCOASTS INITIATIVE | MASS.GOV](#)]

- **OFFICE HOURS**

Registration links will be available on the ResilientCoasts site above

Morning options:

- Monday, March 10, 9 –10 am
- Monday, March 17, 9 –10 am

Afternoon options:

- Wednesday, March 12, 4-5 pm
- Wednesday, March 19, 4-5 pm

- **FULL PLAN REVIEW AND COMMENT**

- Anticipate releasing full draft plan for public review and comment Spring 2025

WE ARE HOLDING THIS MEETING AGAIN TOMORROW (TUESDAY) MORNING AT 10 AM – PLEASE SHARE WITH OTHERS WHO MAY BE INTERESTED TO JOIN

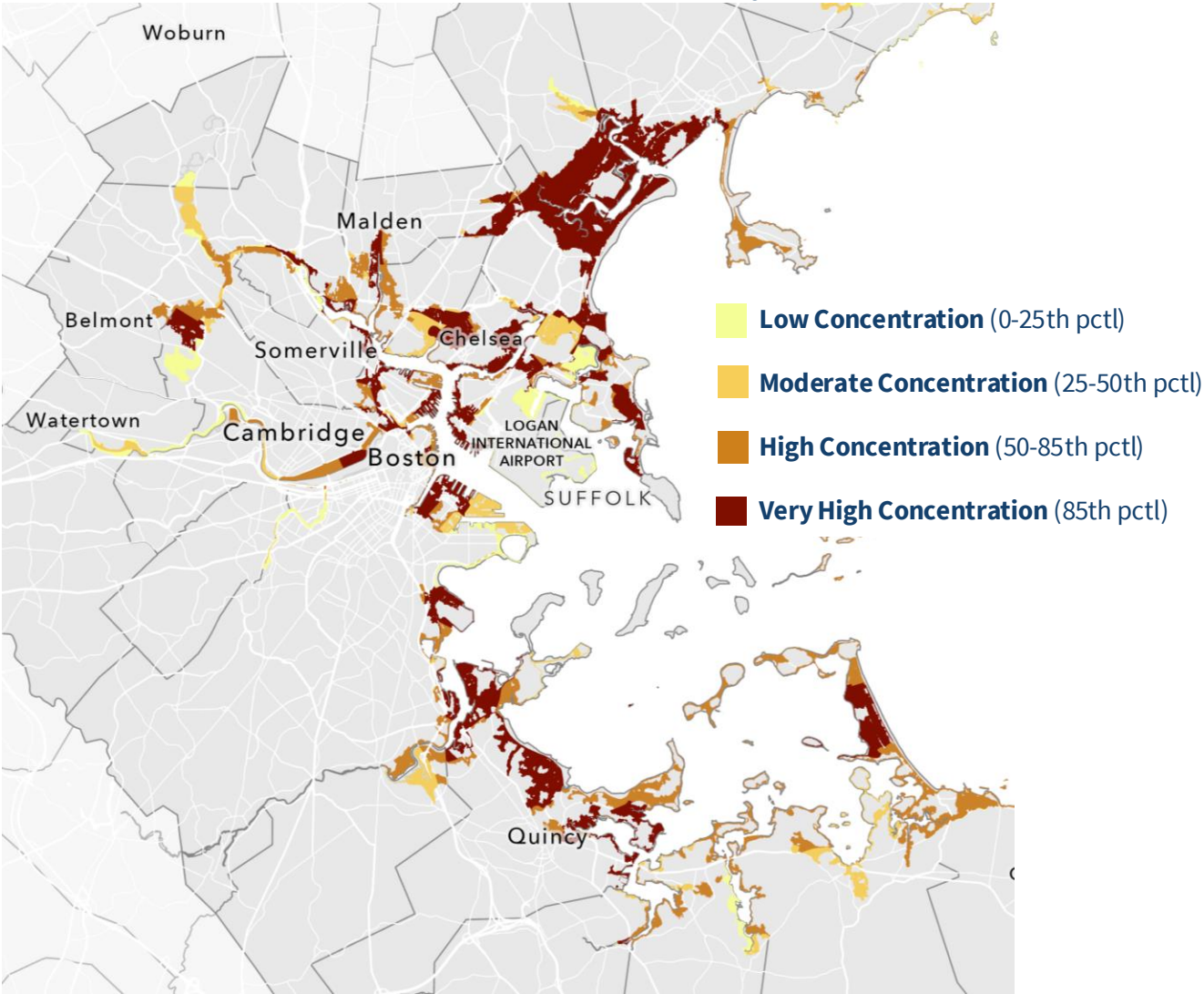
The background is a deep blue with intricate, organic, marbled patterns in lighter shades of blue and white, resembling stone or liquid swirls. The patterns are dense and cover the entire frame.

Thank you!

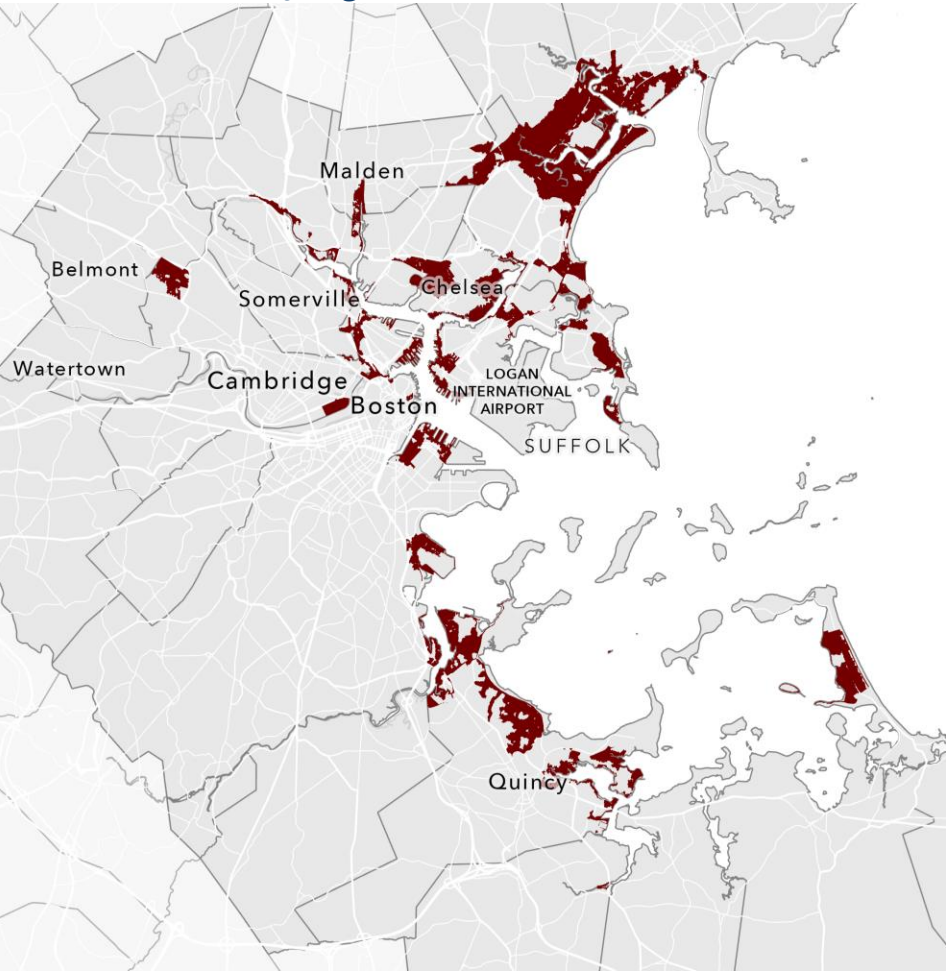
Appendix of Additional Maps

PEOPLE & HOUSING NEAR-TERM VULNERABILITY

Boston Harbor Relative Concentrations of Vulnerability

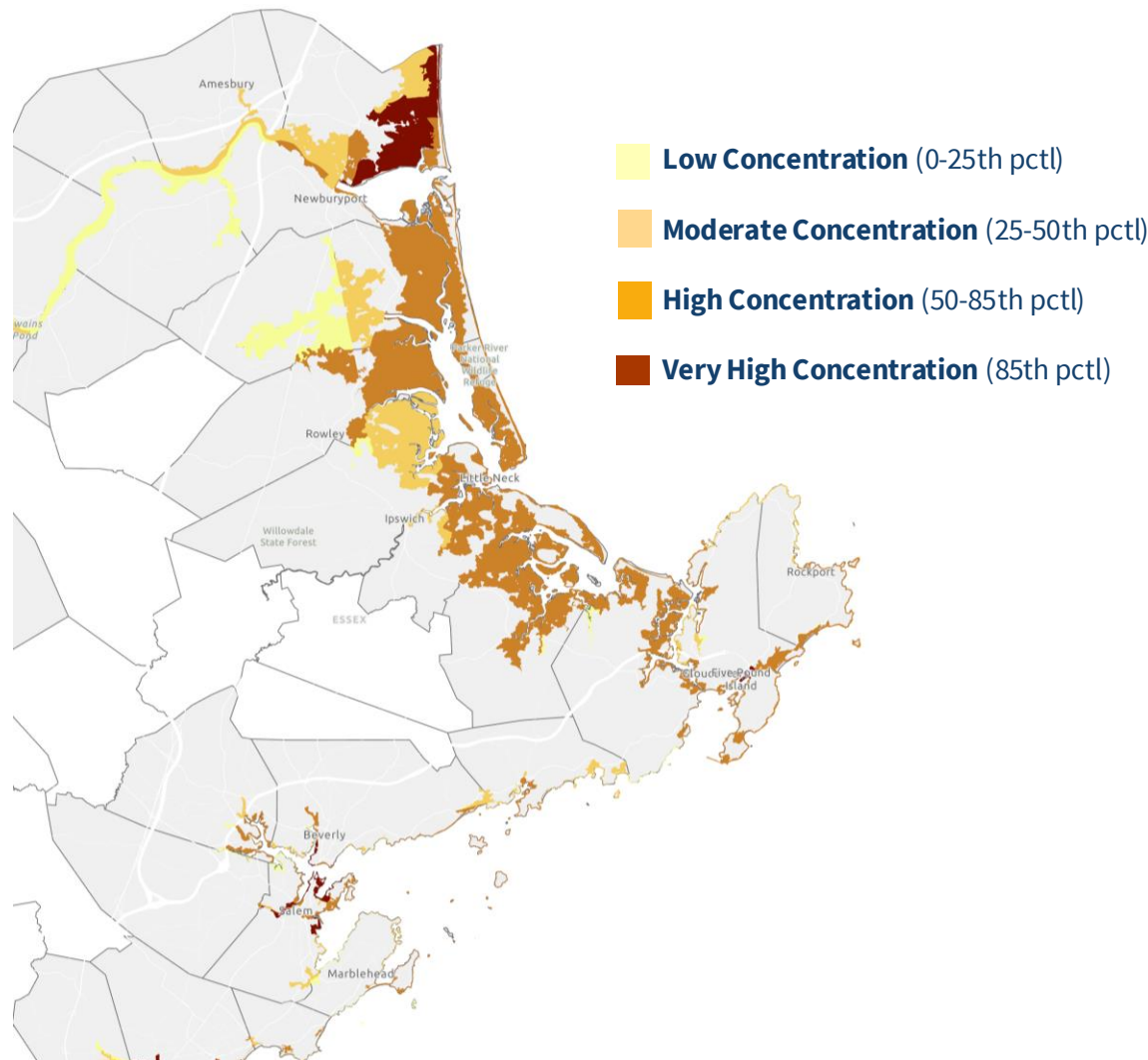


Boston Harbor Very High Concentration



PEOPLE & HOUSING NEAR-TERM VULNERABILITY

North Shore Relative Concentrations of Vulnerability

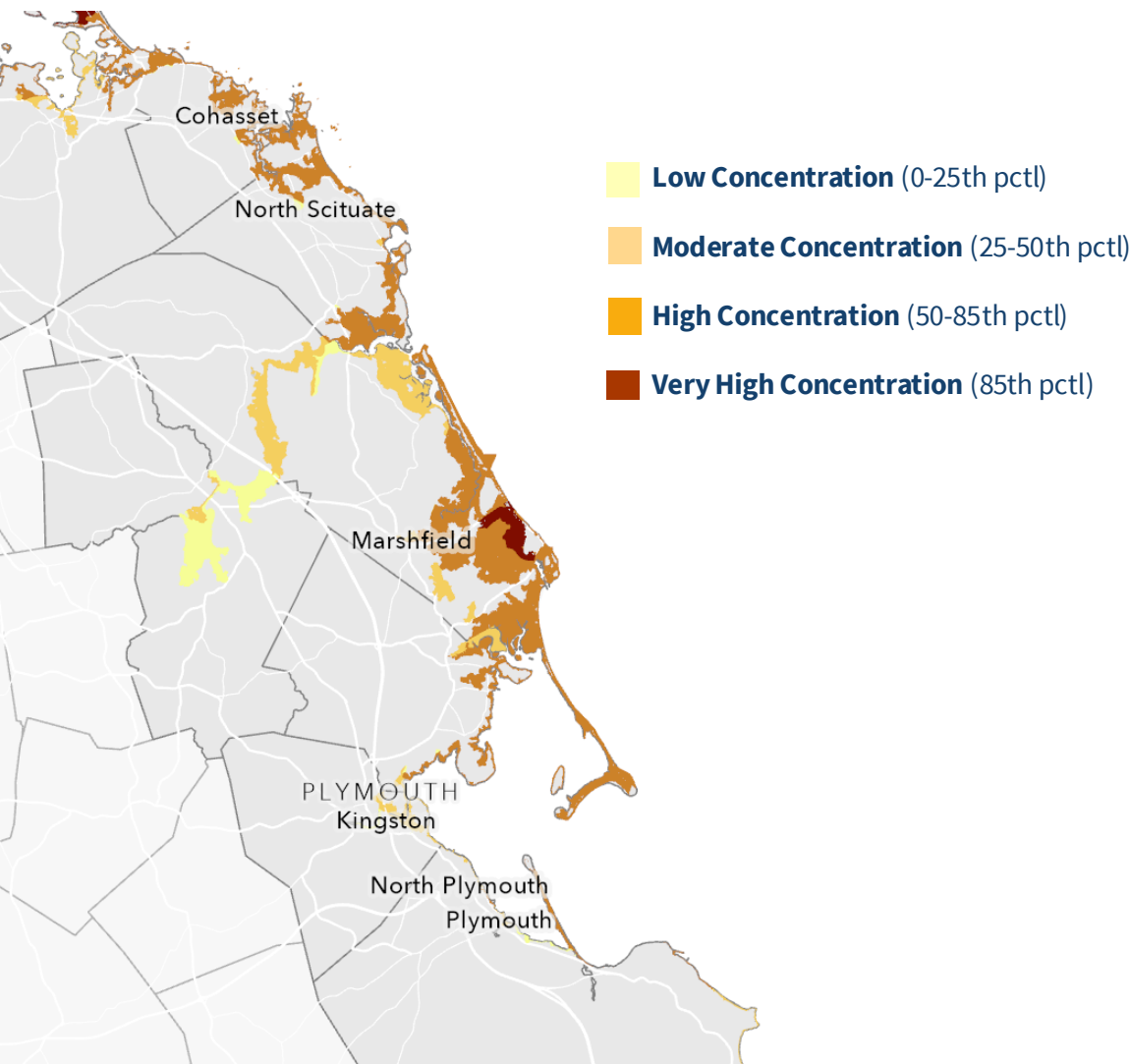


North Shore Very High Concentration

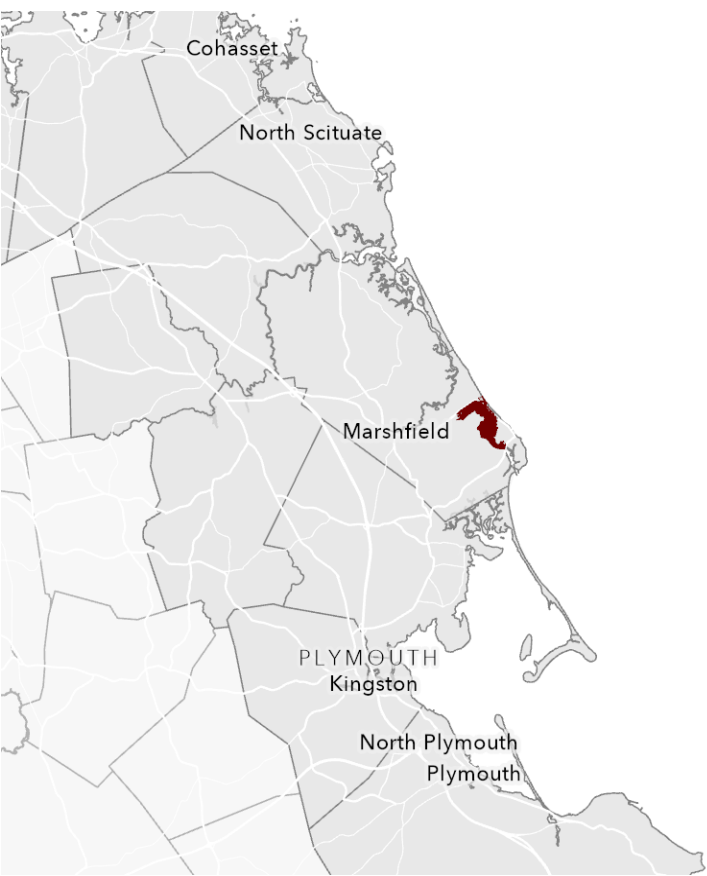


PEOPLE & HOUSING NEAR-TERM VULNERABILITY

South Shore Relative Concentrations of Vulnerability

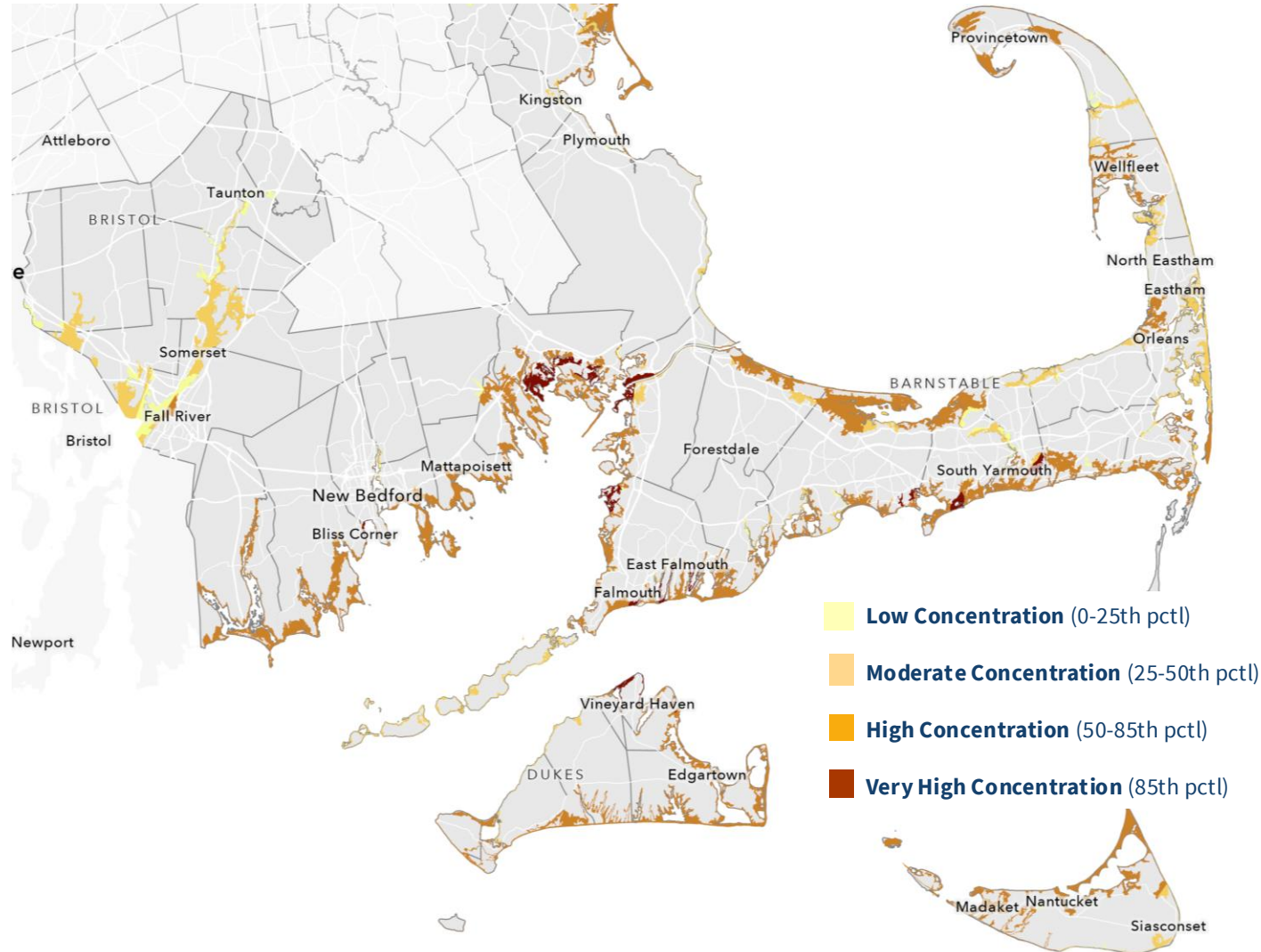


South Shore Very High Concentration

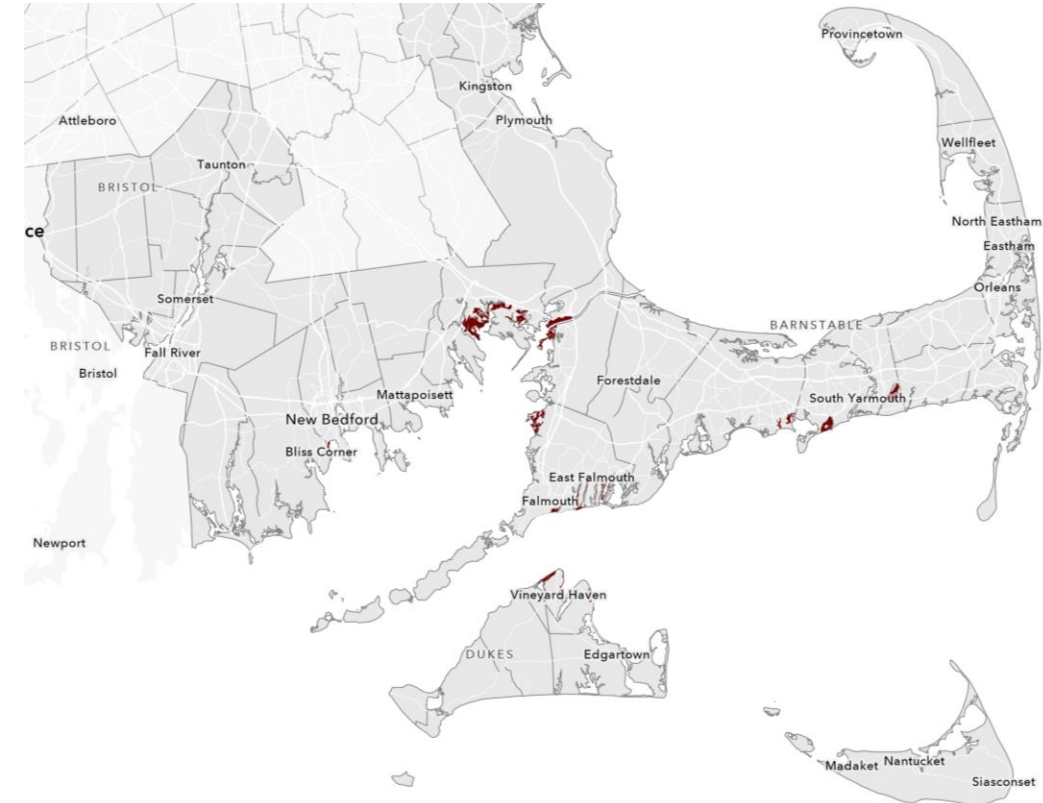


PEOPLE & HOUSING NEAR-TERM VULNERABILITY

South Coast, Cape & Islands Relative Concentrations of Near-term Vulnerability

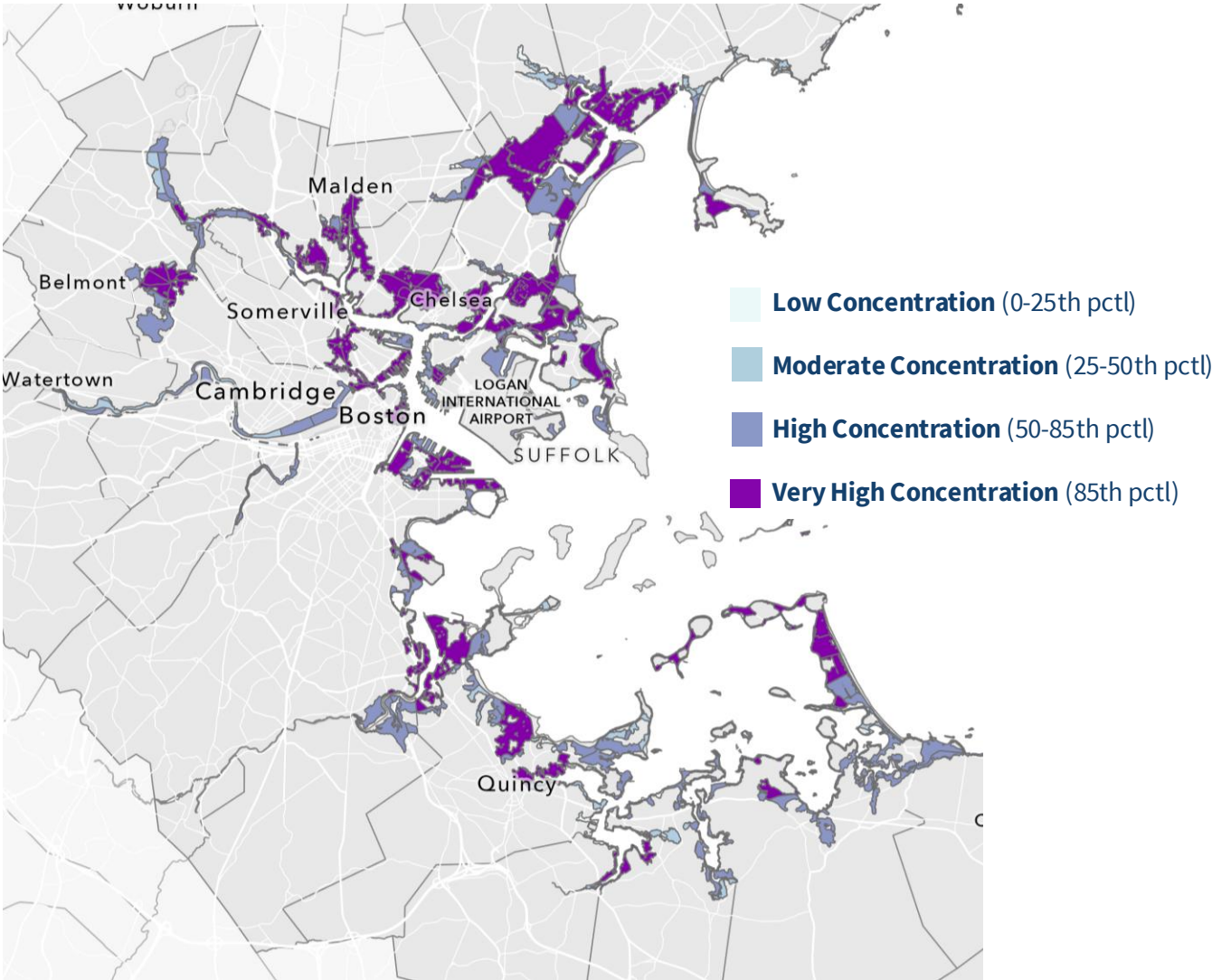


South Coast, Cape & Islands Very High Concentration of Near-term Vulnerability

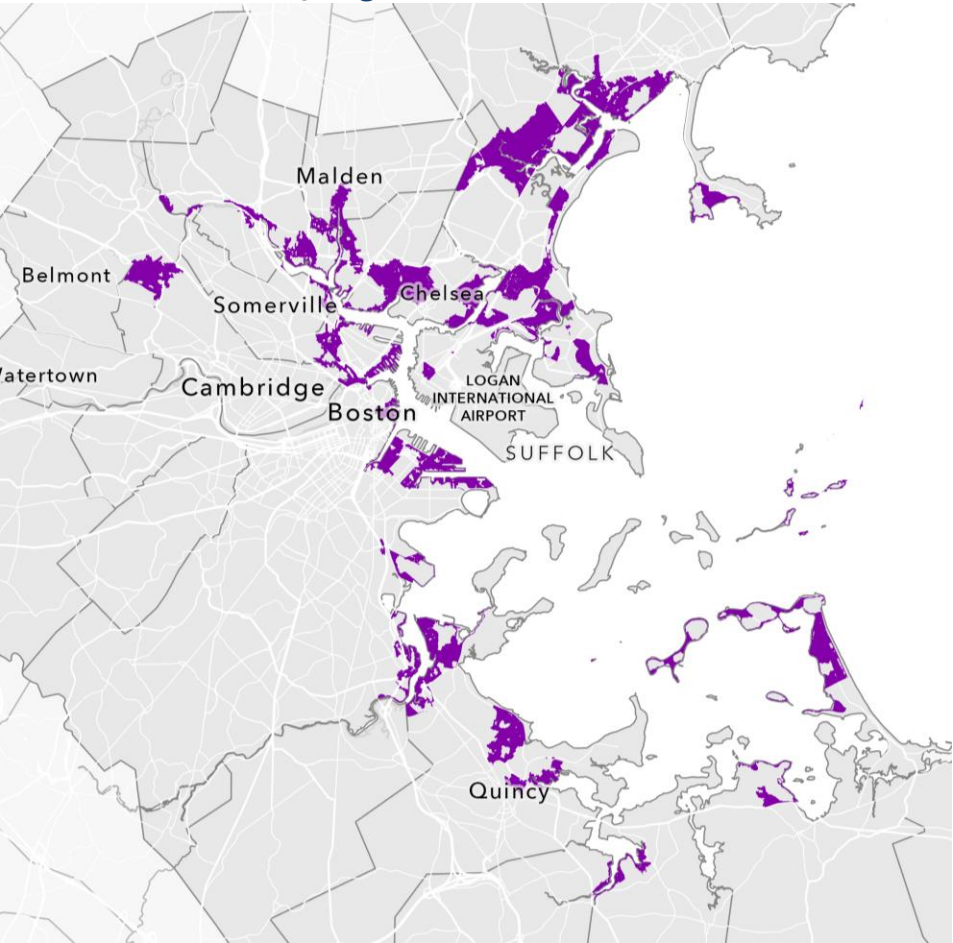


BUILT INFRASTRUCTURE NEAR-TERM VULNERABILITY

Boston Harbor Relative Concentrations of Vulnerability

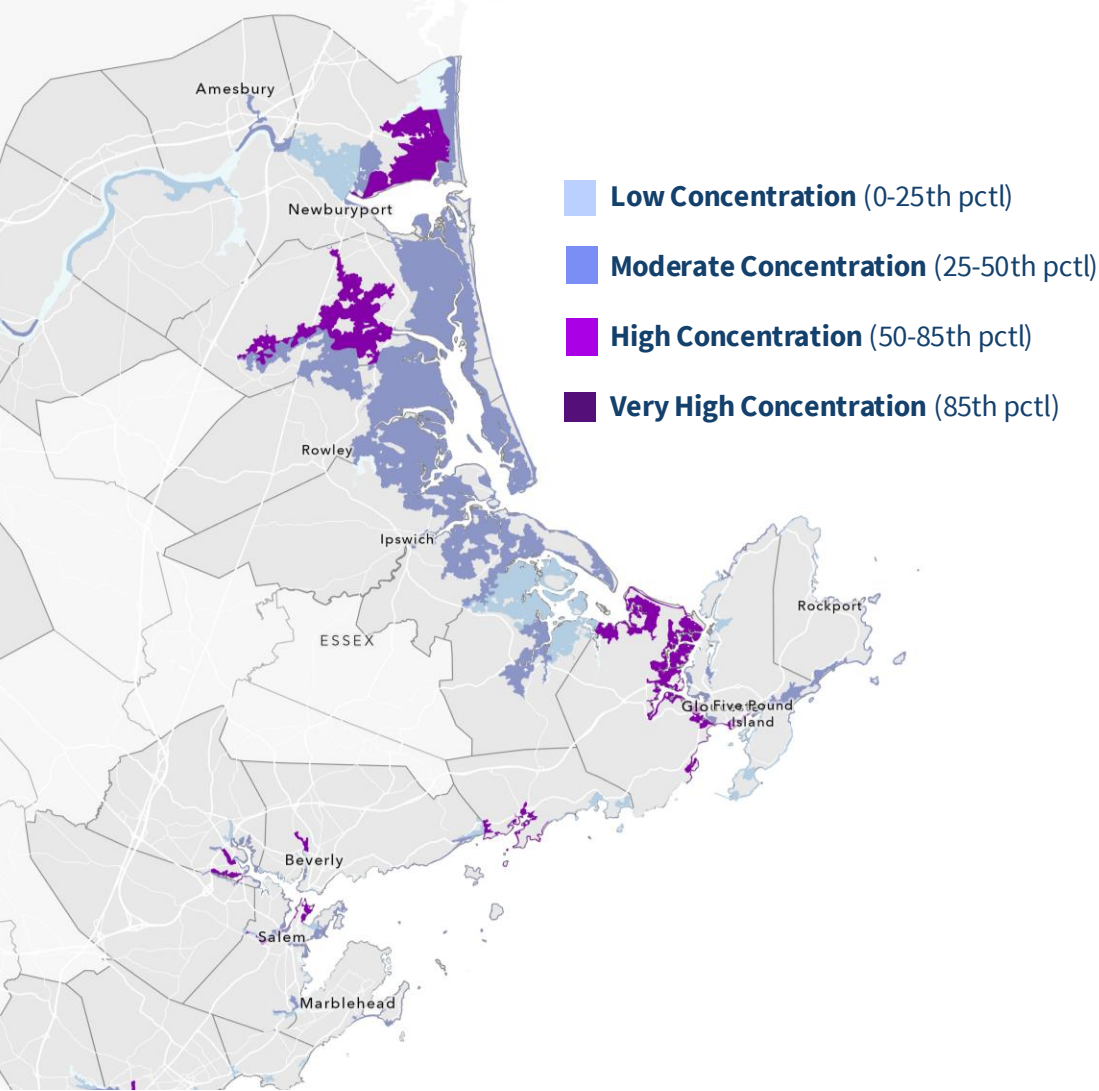


Boston Harbor Very High Concentration

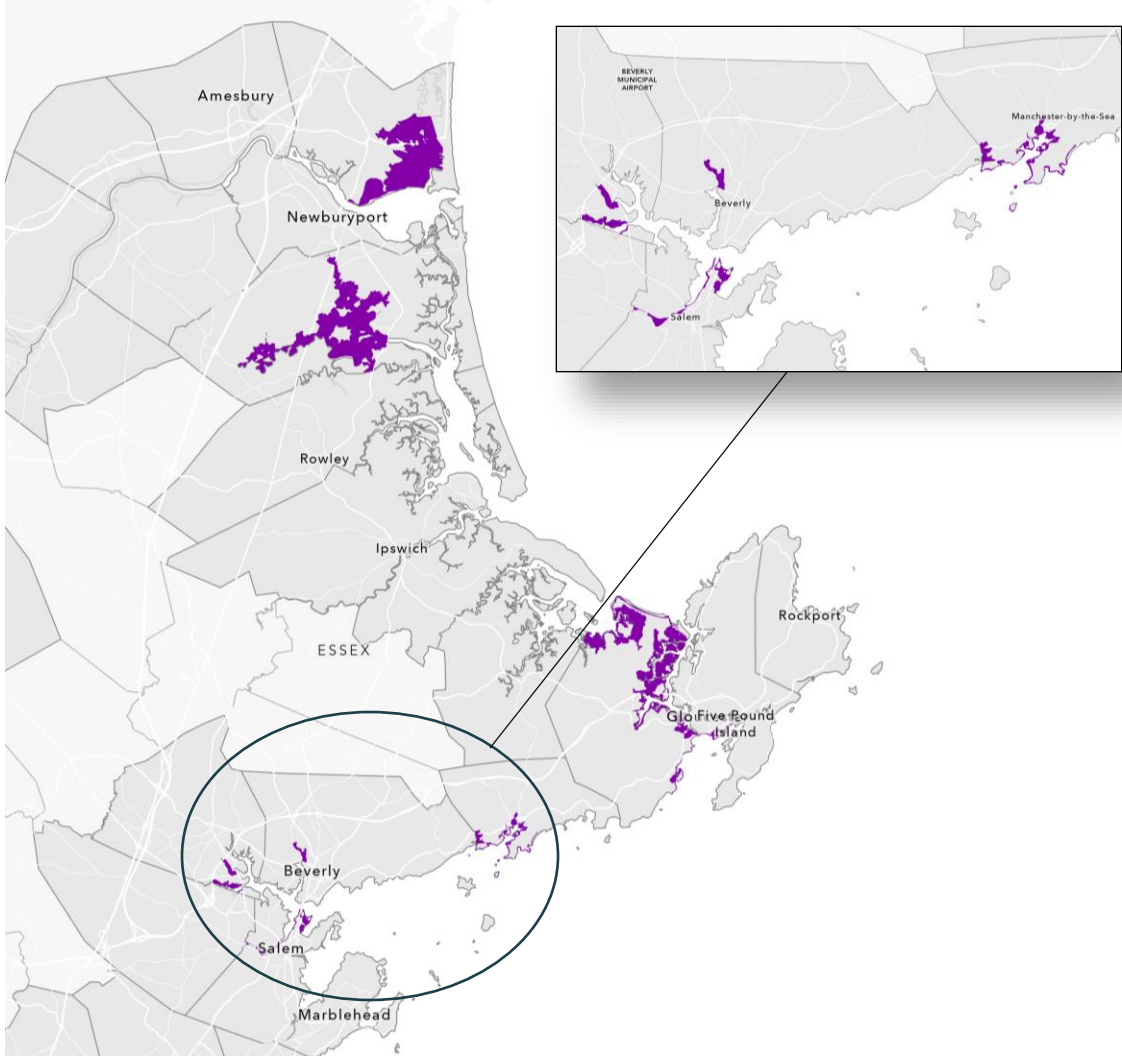


BUILT INFRASTRUCTURE NEAR-TERM VULNERABILITY

North Shore Relative Concentrations of Vulnerability

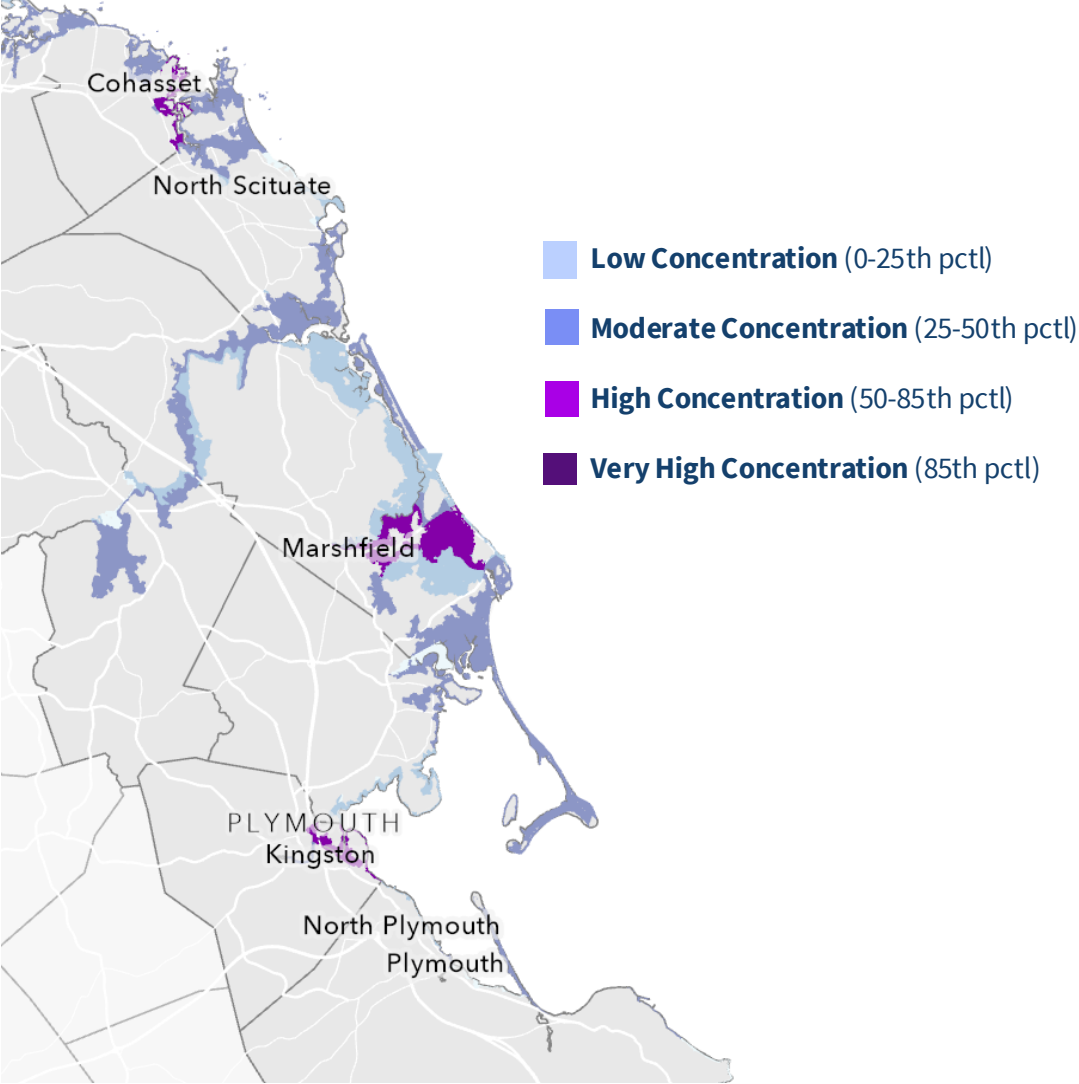


North Shore Very High Concentration

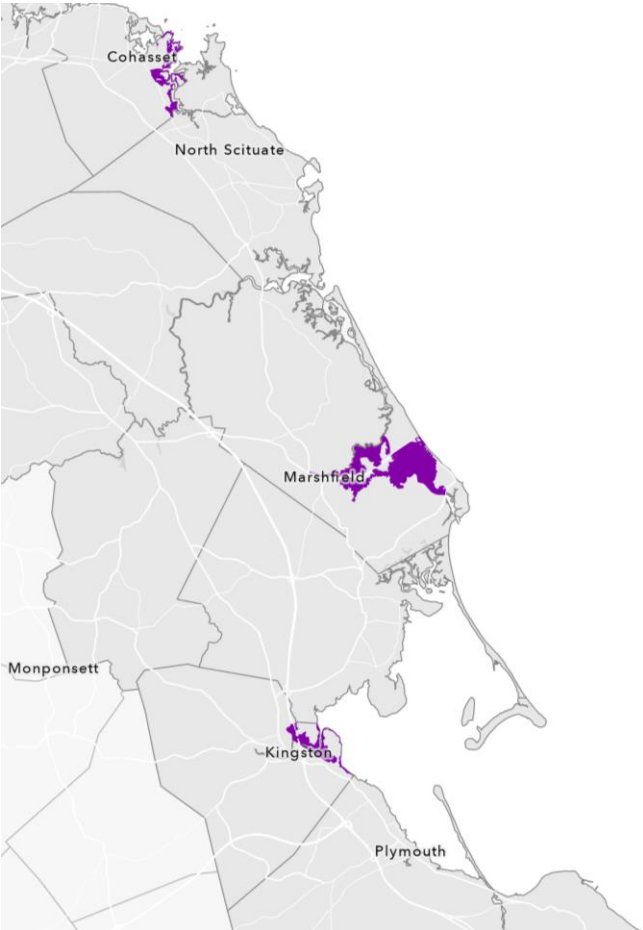


BUILT INFRASTRUCTURE NEAR-TERM VULNERABILITY

South Shore Relative Concentrations of Vulnerability

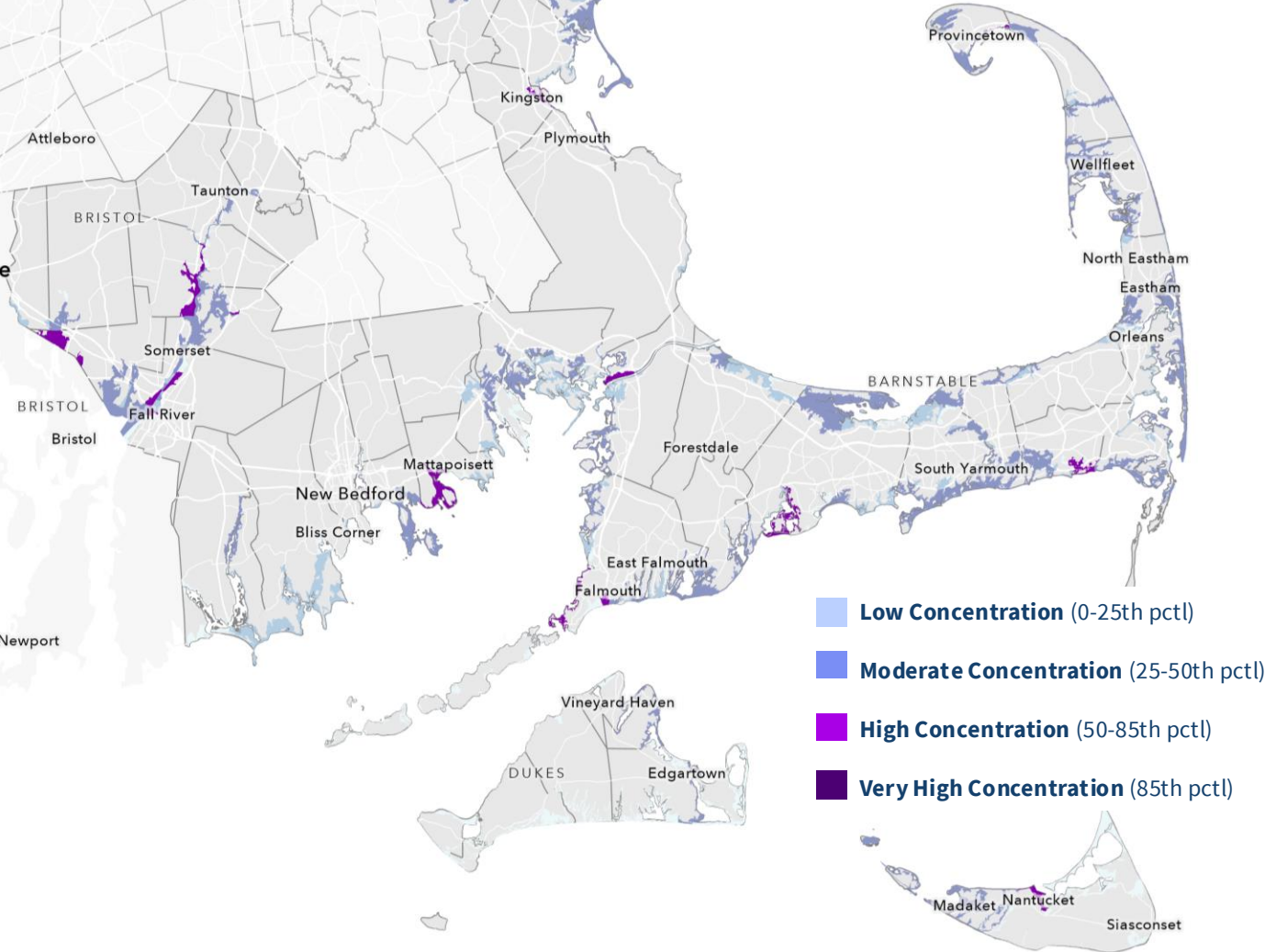


South Shore Very High Concentration

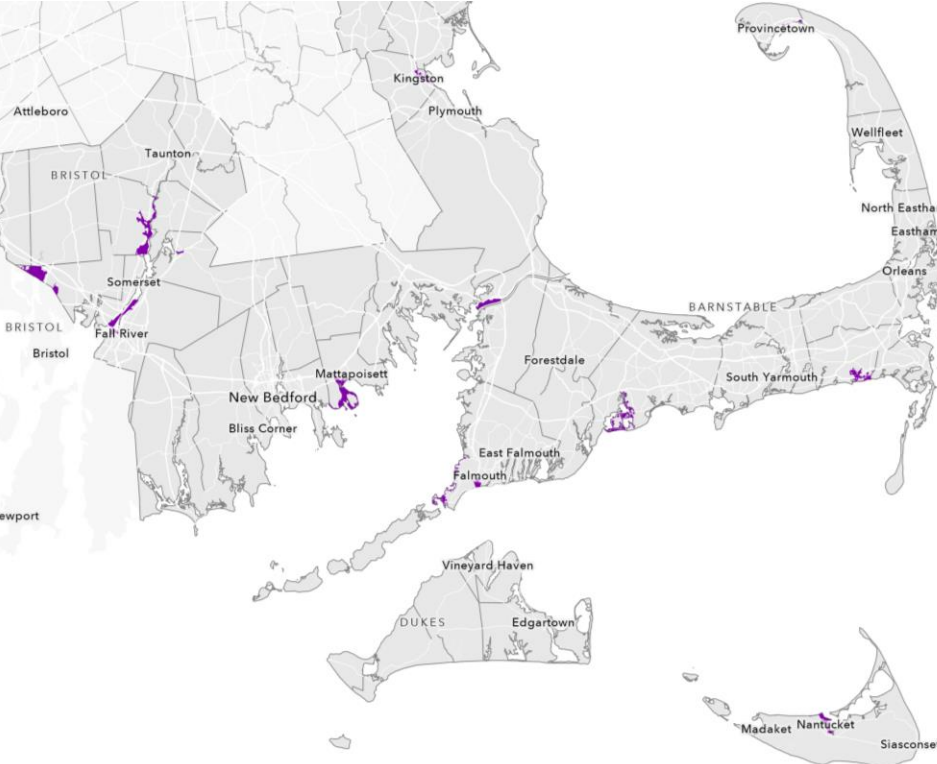


BUILT INFRASTRUCTURE NEAR-TERM VULNERABILITY

South Coast, Cape & Islands Relative Concentrations of Near-term Vulnerability

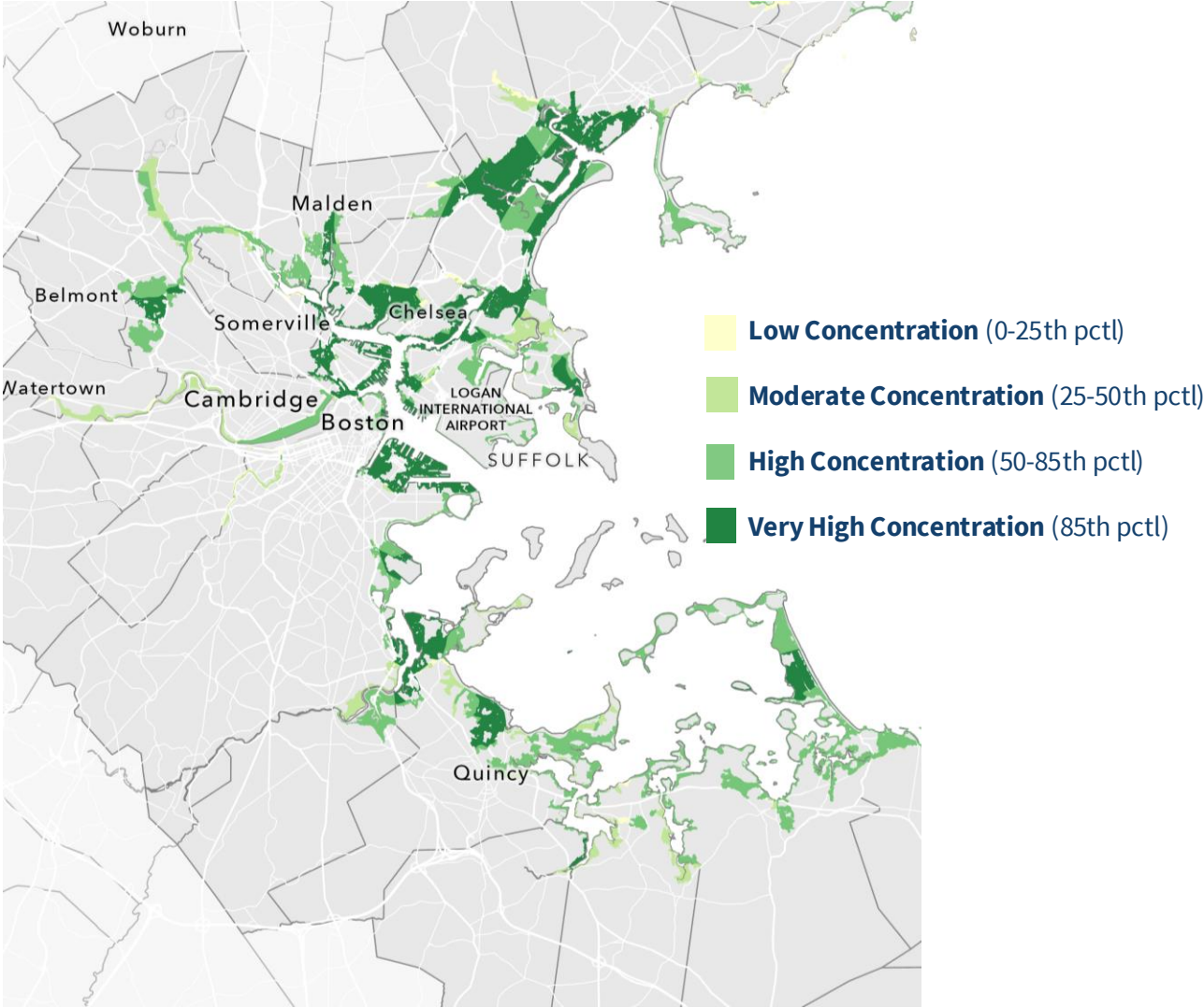


South Coast, Cape & Islands Very High Concentration of Near-term Vulnerability

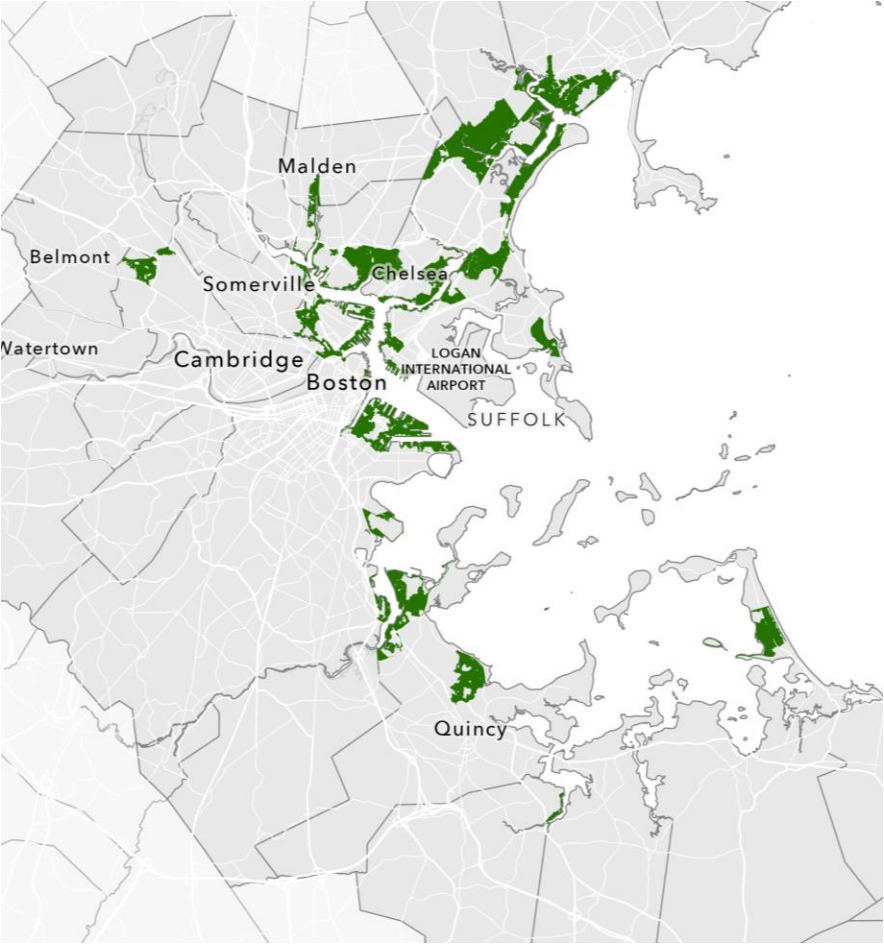


ECONOMY RISK NEAR-TERM VULNERABILITY

Boston Harbor Relative Concentrations of Near-term Vulnerability

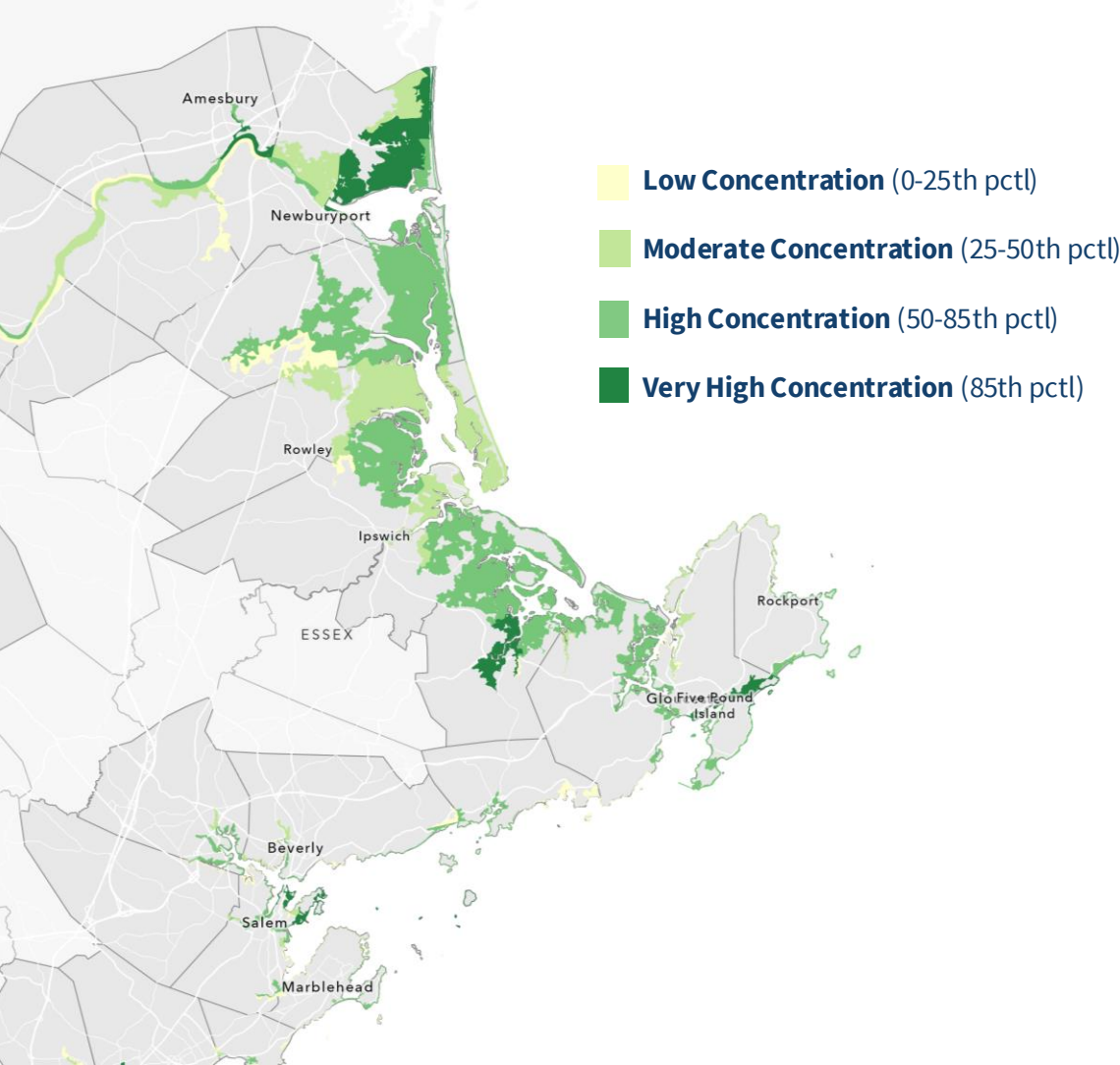


Boston Harbor Very High Concentration of Near-term Vulnerability

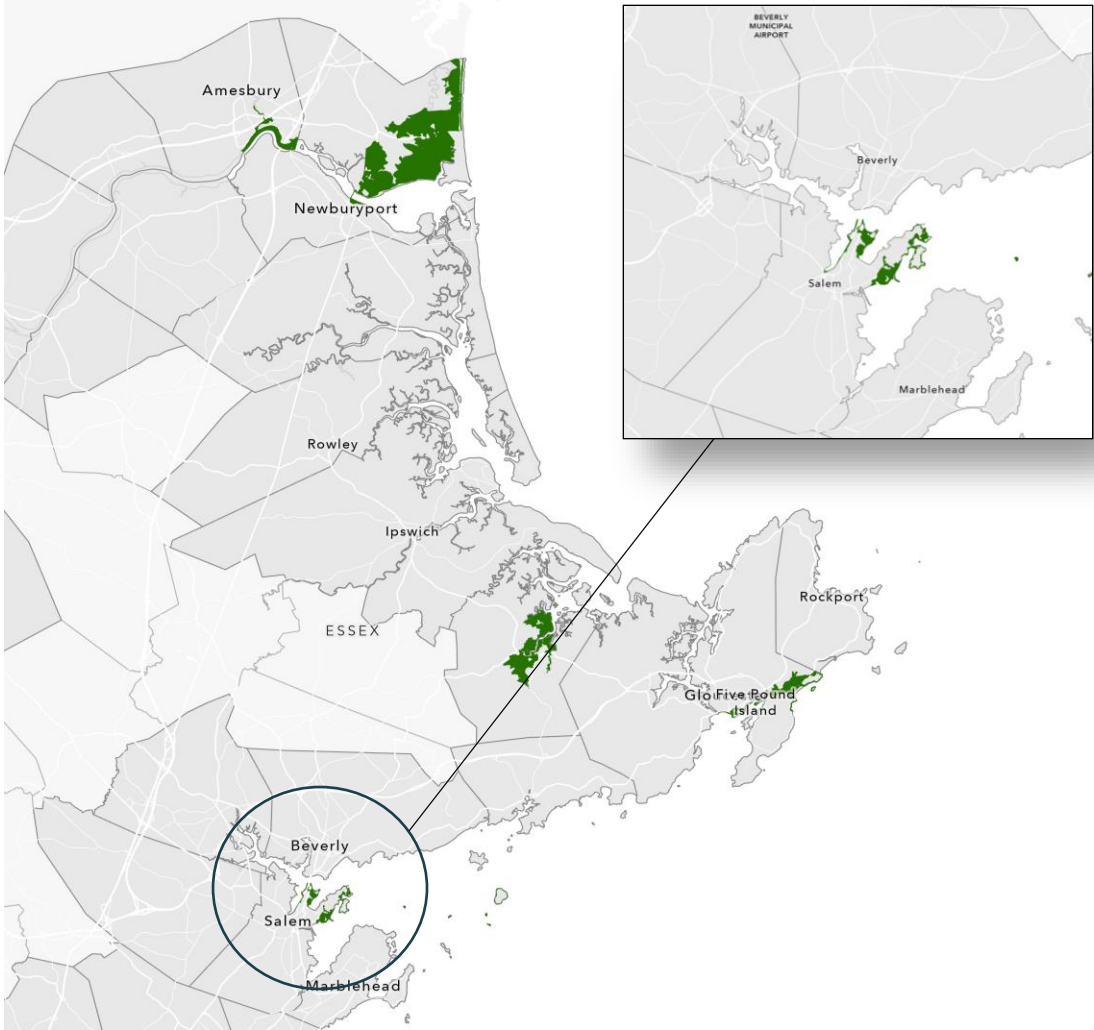


ECONOMY RISK NEAR-TERM VULNERABILITY

North Shore Relative Concentrations of Near-term Vulnerability

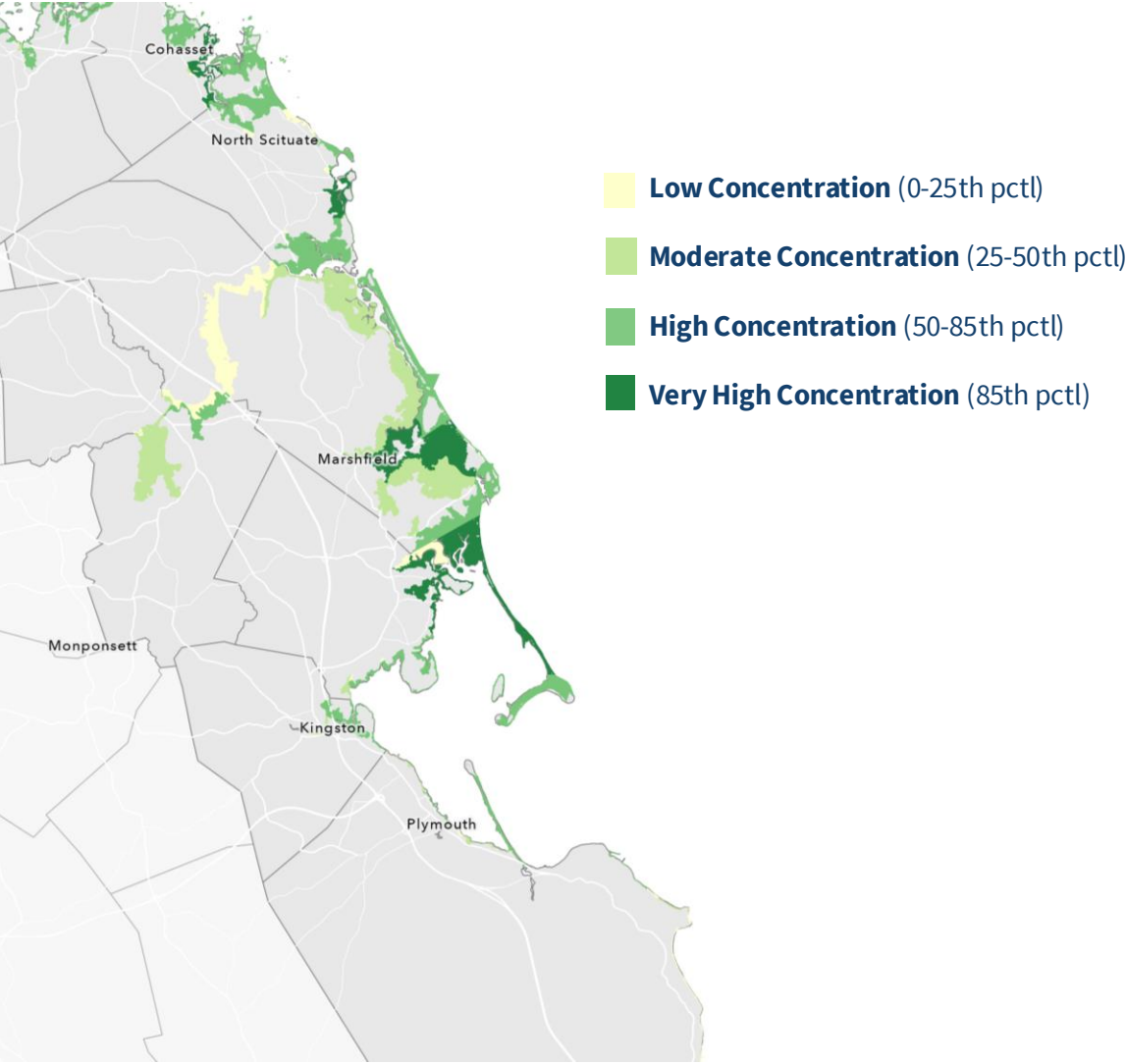


North Shore Very High Concentration of Near-term Vulnerability

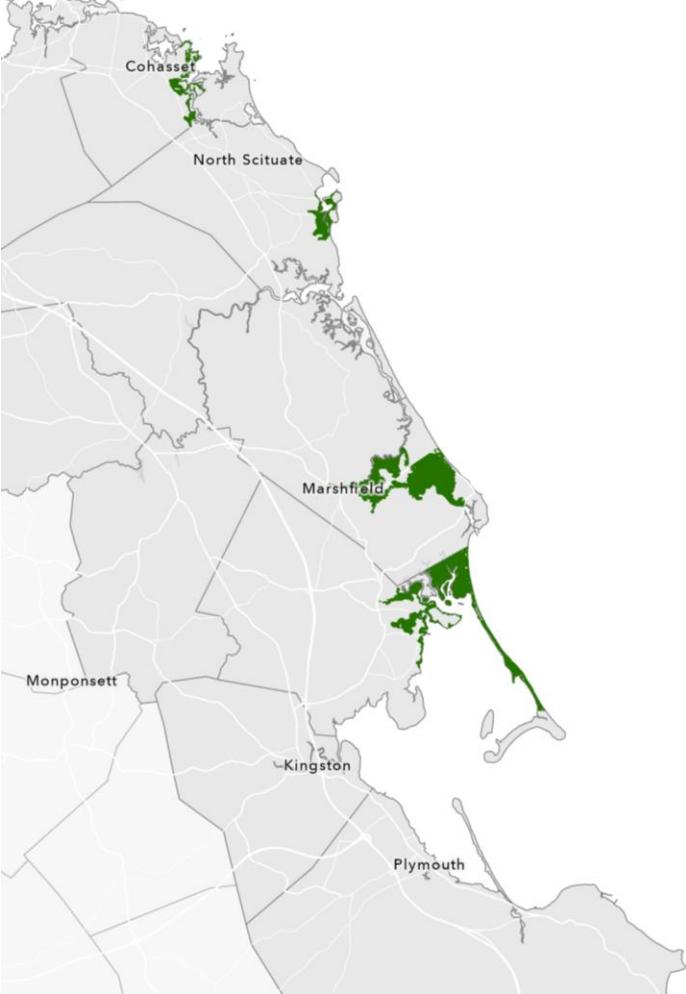


ECONOMY RISK NEAR-TERM VULNERABILITY

South Shore Relative Concentrations of Near-term Vulnerability

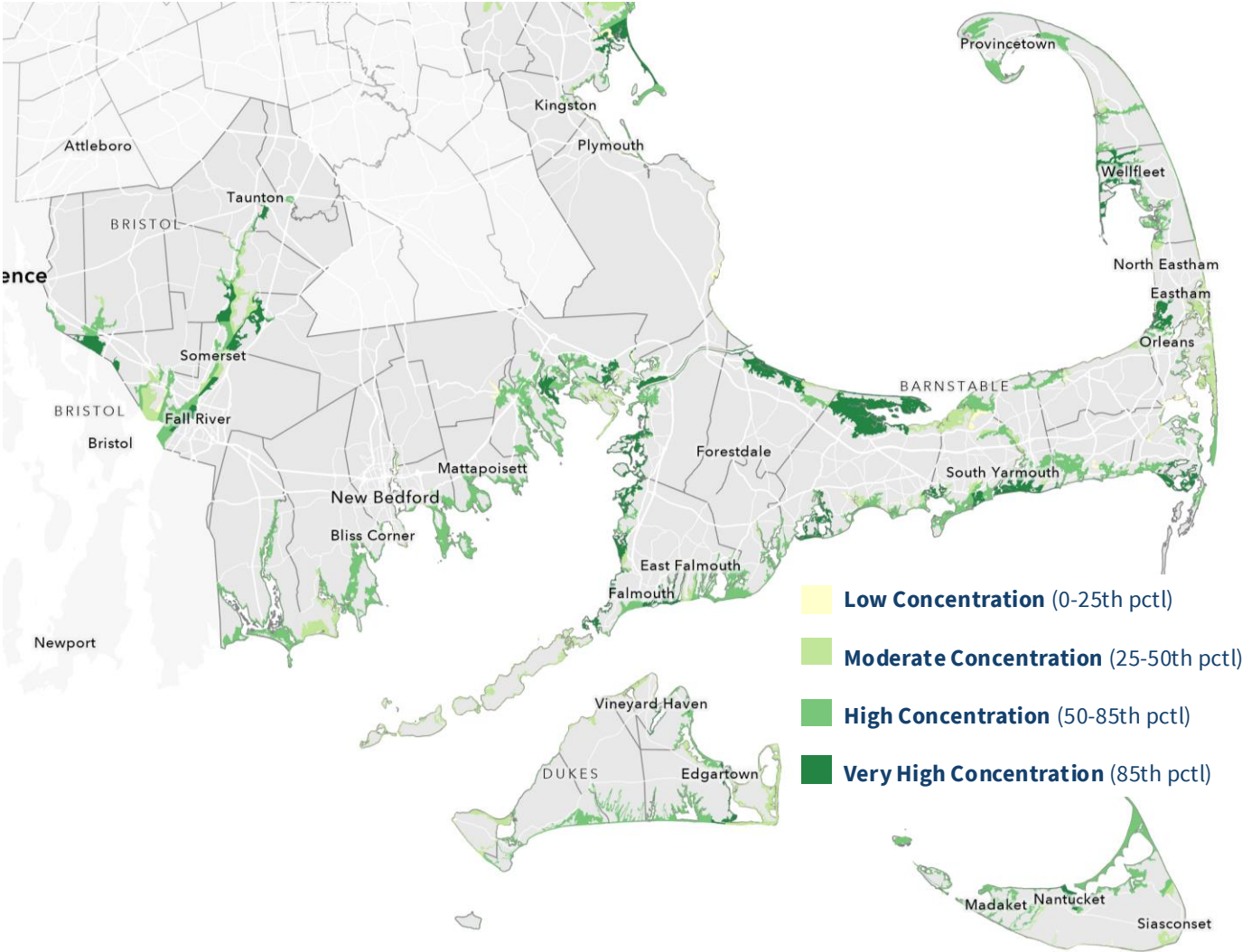


South Shore Very High Concentration of Near-term Vulnerability



ECONOMY RISK NEAR-TERM VULNERABILITY

South Coast, Cape & Islands Relative Concentrations of Near-term Vulnerability



South Coast, Cape & Islands Very High Concentration of Near-term Vulnerability

