

Submission of a notice of intent (NOI) for coverage under the RGP

- Notice of Intent (NOI) Instructions and Suggested Formats
- Appendix I & II requirements – endangered species
- Appendix III requirements – national historic preservation act
- Appendix V and VI Requirements – calculation of effluent limitations
- 7Q10 and dilution factor approvals, if applicable (MassDEP and NHDES)
- Appendix VII Requirements – test methods and minimum levels
- Sampling Requirements
- Notice of Change (NOC) Instructions and Suggested Formats
- Notice of Termination (NOT) Instructions and Suggested Formats

NOI instructions and suggested formats

Instructions:

<https://www3.epa.gov/region1/hpdes/remediation/FinalAppendixIVPt1.pdf>

Suggested Fillable Electronic Format:

<https://www3.epa.gov/region1/hpdes/remediation/NOIFillable.pdf>

Appendix VII Requirements – Test Methods & Minimum Levels

Appendix VII:

<https://www3.epa.gov/region1/hpdes/remediation/FinalAppendixVII.pdf>

Additional Resource:

https://www3.epa.gov/region1/hpdes/remediation/AppendixVII_Resource.pdf

Appendix I & II Requirements – Endangered Species

Appendix I:
<https://www3.epa.gov/region1/npdes/remediation/FinalAppendixI.pdf>

Appendix II:
<https://www3.epa.gov/region1/npdes/remediation/FinalAppendixII.pdf>

Appendix III Requirements – National Historic Preservation Act

Appendix III:
<https://www3.epa.gov/region1/npdes/remediation/FinalAppendixIII.pdf>

Appendix V Requirements – Calculation of Effluent Limitations

Appendix V:
<https://www3.epa.gov/region1/npdes/remediation/FinalAppendixV.pdf>

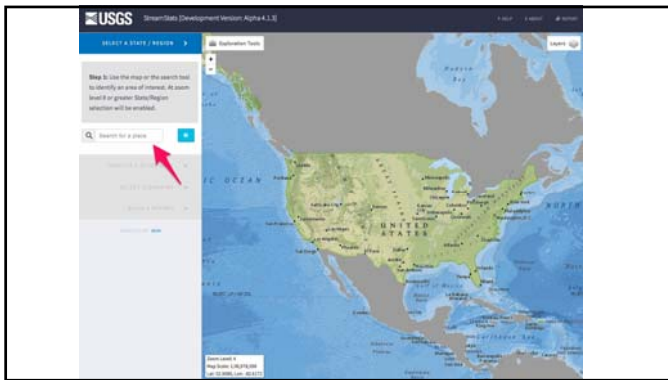
Additional Resource:
<https://www3.epa.gov/region1/npdes/remediation/MALimitsBook.xlsx>

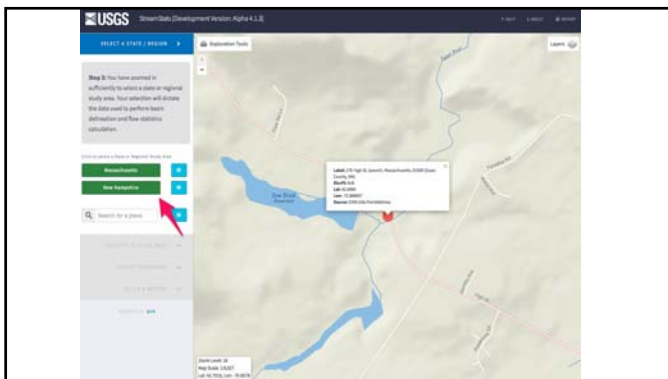
7Q10 Confirmation & Dilution Factor Approval

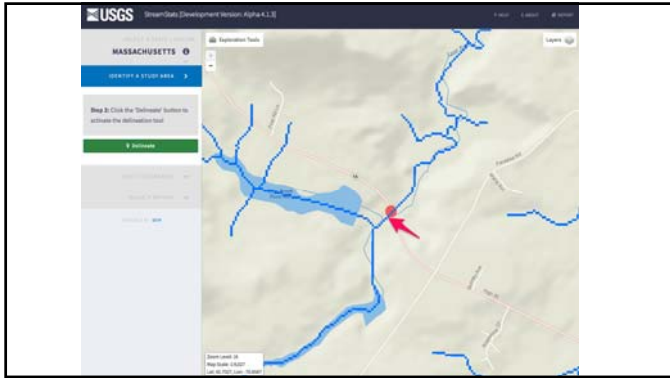
PRIOR TO SUBMITTING NOI:

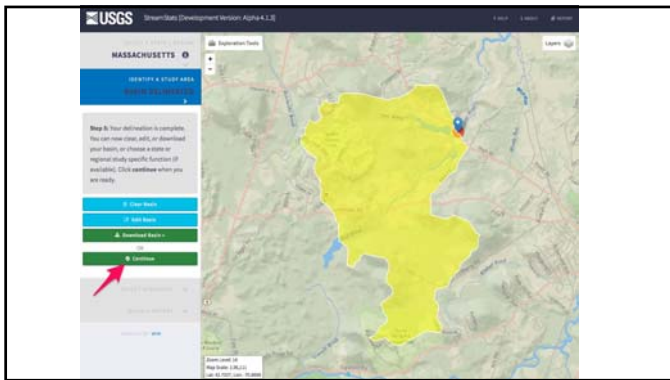
- Send 7Q10 and dilution factor calculation to MassDEP for confirmation
- Discharges to salt water assumed to have 1:1 dilution unless studies available
- Use USGS StreamStats or DFLOW to determine 7Q10
- Use location where outfall/discharge daylights

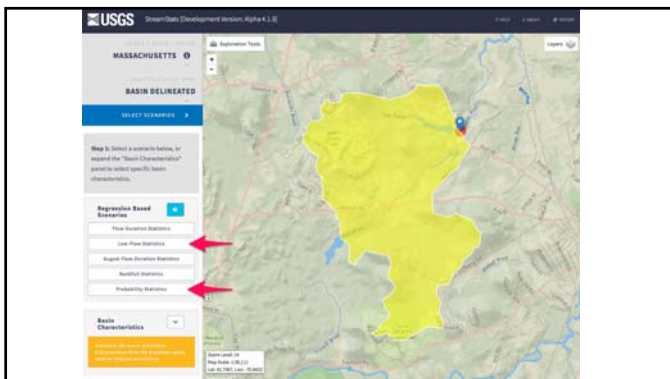


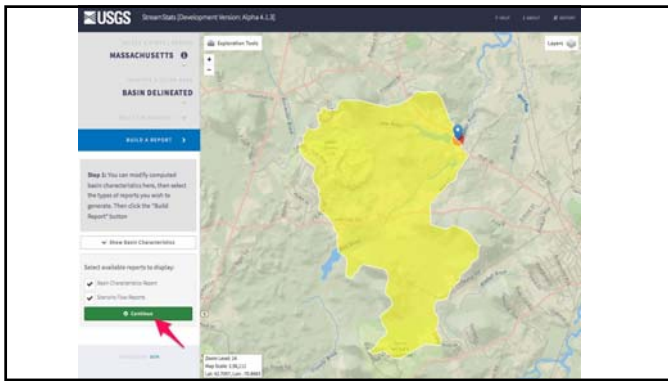


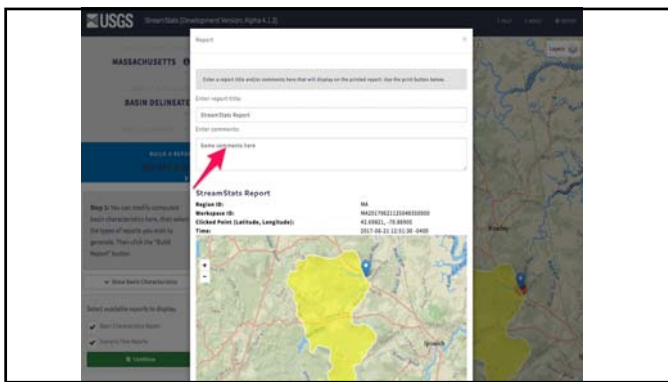


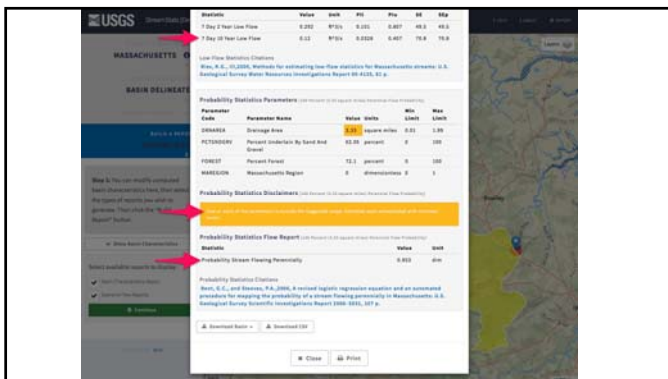












DILUTION FACTOR

DILUTION FACTOR EQUATION:

$$\frac{Q_s + Q_d}{Q_d}$$

Where:

Q_s = 7Q10 in million gallons per day (MGD)

Q_d = Discharge flow in MGD (= design flow)

Watch units!

Submitting the Notice of Intent

EPA: [Fillable NOI](#), [Fillable Appendix V](#) or [Appendix VI Electronic Format](#)
NPDES.Generalpermits@epa.gov

MassDEP: [Fillable NOI](#) if a non-MCP site; [Transmittal Form & Fee](#) if discharge will be to an Outstanding Resource Water (ORW)

Municipality: [NOI](#); [additional notifications may be required](#)

Submit the NOI a minimum of 7 days prior to the desired initiation of discharge

Electronic submissions are required unless operator is able to demonstrate technical or administrative infeasibility; electronic reporting required as of December 21, 2020

IS THIS A MASSACHUSETTS CONTINGENCY PLAN (MCP) SITE?

- If YES: Nothing needs to be submitted to MassDEP
- If NO: See next slide...

WILL THE DISCHARGE BE TO AN
OUTSTANDING RESOURCE WATER?

CHECK USING DOWNLOADED MassGIS LAYER
OR TABLES IN 314 CMR 4.06

- If not an ORW: Nothing needs to be submitted to MassDEP
- If an ORW: Discharge may be allowed on a case-by-case basis - fee (non-municipalities), transmittal form, application, and copy of NOI required, go to: <http://www.mass.gov/eea/agencies/massdep/service/approvals/wm-15-npdes-general-permit-application.html>

MassDEP
Application Form

BWR WM15:



MassDEP
Transmittal Form



notice of change (NOC) instructions & suggested formats

Appendix IV, Part 2 Instructions:
<https://www3.epa.gov/region1/npdes/remediation/FinalAppendixIVPt2.pdf>

Appendix IV, Part 2 Suggested Fillable Electronic Format:
<https://www3.epa.gov/region1/npdes/remediation/NOCFillable.pdf>

Appendix VIII Suggested Fillable Electronic Format:
<https://www3.epa.gov/region1/npdes/remediation/DMRFillable.xlsx>

Notice of Termination (NOT) instructions & suggested formats

Appendix IV, Part 3 Instructions:
<https://www3.epa.gov/region1/npdes/remediation/FinalAppendixIVPt3.pdf>

Appendix IV, Part 3 Suggested Fillable Electronic Format:
<https://www3.epa.gov/region1/npdes/remediation/NOTFillable.pdf>

Appendix VIII Suggested Fillable Electronic Format:
<https://www3.epa.gov/region1/npdes/remediation/DMRFillable.xlsx>

Questions?
