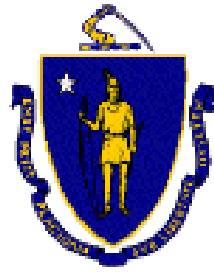




MASSACHUSETTS DEPARTMENT OF  
CONSERVATION AND RECREATION

# Ryan Park & Playground

**25% Design Public Meeting  
February 1, 2024**



# Commonwealth of Massachusetts

Governor

**Maura Healey**

Lieutenant Governor

**Kim Driscoll**

Energy and Environmental Secretary

**Rebecca L. Tepper**

Department of Conservation and Recreation Commissioner

**Brian Arrigo**



## DCR Mission Statement

*To protect, promote, and enhance our  
common wealth of natural, cultural  
and recreational resources  
for the well-being of all.*

- You will have the opportunity to submit comments over the course of the next three weeks at:
  - DCR Public Comments  
<https://www.mass.gov/forms/dcr-public-comments>
- Two ways to ask questions during the meeting
  - Use chat feature
  - Raise your hand using the Zoom function, and you will be given permission to unmute and speak.

*Please note that this public meeting will be recorded; the recording will be a public record.*

- Re-Introduce the Project Team
- Community Feedback
- New Parking
- Concept A & B Presentation
- Playground and Fitness Equipment
- Discussion Q/A



## **Department of Conservation and Recreation**

Stella Lensing, PLA, Project Manager

Sandy Libby, Playground Planner

Daniel Cushing, Director, Public Engagement

## **BETA Group, Inc.**

Scott Ridder, PLA, Project Manager

Andrew Pichette, PLA, Landscape Architect

## **Sub Consultants**

Alpha Survey

The Public Archeology Laboratory

JMBA+ Architects

BER Electrical Engineer

## Parking

- Mixed thoughts - Increase Parking for park use
- Expand to the west?
- Parking lane on River Street (City issue)
- Drop off area
- After hours parking

## Activity Area

- Permanent floodlights for Summer Nights
- Teens and Tweens
  - Misters
  - Fitness
  - Gathering Spaces
- Tree House Playground Theme

## Circulation

- Entrance Arch / reuse
- Safer crosswalks (City issue)
- Repair existing fencing / holes

## Open Lawn

- Benches along path in shaded areas
- Graphic panels with history of Mattapan
- Poor drainage at Meadowbank entrance
- Open play / non-programmed space



## PUBLIC TRANSPORTATION

**Mattapan Station** - 0.3 miles (6 min walk)

**Central Ave Station** - 0.8 miles (15 min walk)

Bus 15/24 – River Street

Public bike

## Parking

For trailhead, park and playground

## Activity Area

Playground, Building & Wading Pool Area, Courts, Fitness Area

## Circulation

People  
Vehicles

## Open Lawn

Open  
Path



*Aerial Imagery: Nearmap*

- Dead End Circulation
- 9 Parking Spaces, including 2 Accessible Spaces
- Area: 4,275 s.f.
- Trailhead empties into parking lot with no direct connection onto River Street



*Aerial Imagery: Nearmap*

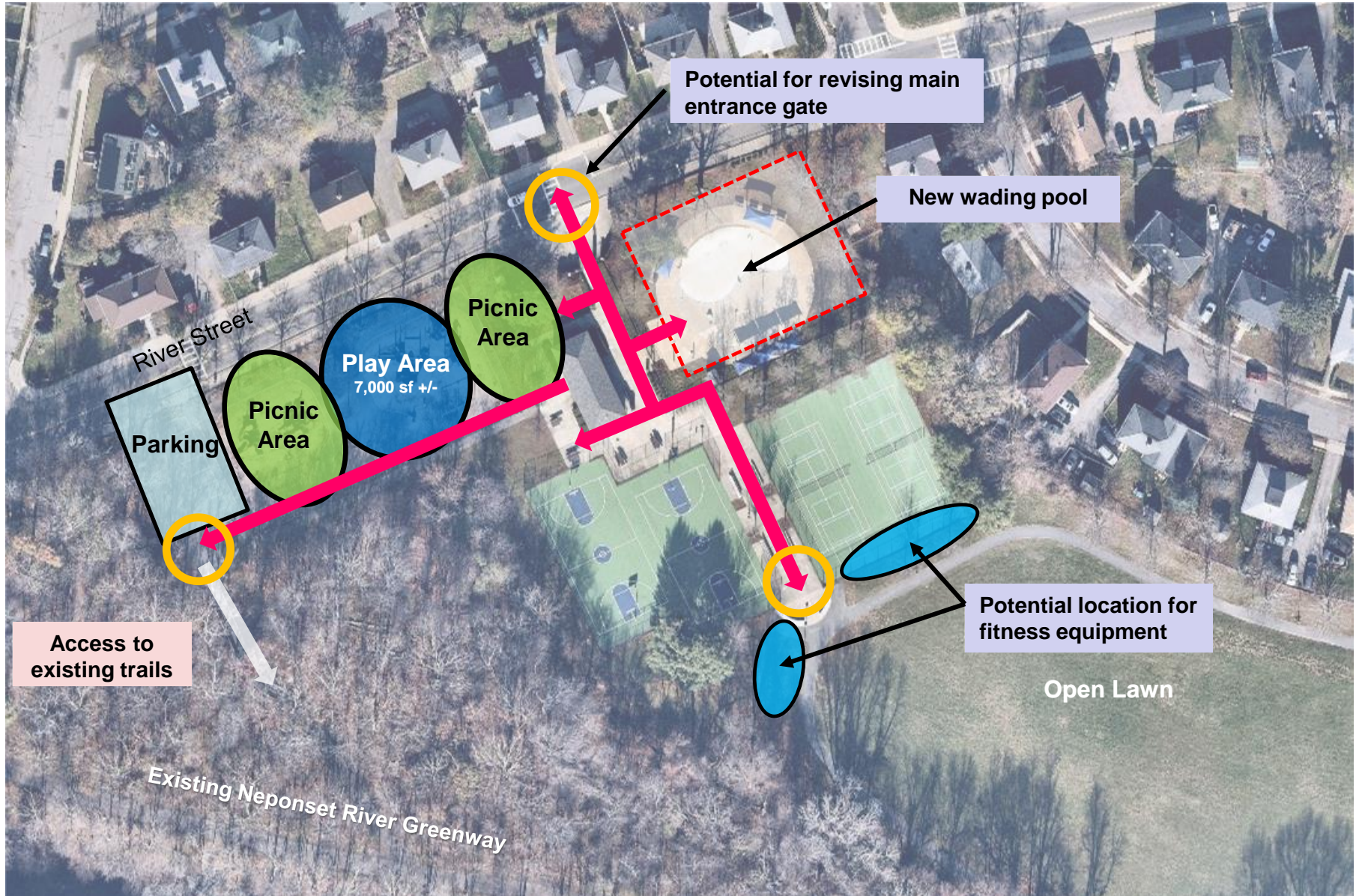
# Improved Parking Layout

- Safer, two-way circulation requires expansion (9,500 s.f.)
- 21 Parking Spaces, including 2 Accessible Spaces
- Expanding to previously impacted areas
- No trees to be removed
- Easy access to Playground, Park, and greenway



Aerial Imagery: Nearmap

# Public Listening Session Plan



# Concept A - PLAN



## LEGEND

- 1 – EXPANDED PARKING LOT (21 SPACES)
- 2 – TRAILHEAD KIOSK
- 3 – PLAYGROUND
- 4 – RESTROOM FACILITY
- 5 – RETAIN EXISTING GATEWAY
- 6 – STADIUM SEATING AT BASKETBALL COURTS
- 7 – SHADE STRUCTURES & SEATING
- 8 – SOUTH GATEWAY (FOOD TRUCK LOCATION)
- 9 – FITNESS AREA
- 10 – OPEN LAWN
- 11 – KNOLL
- 12 – PERIMETER PATH (APPROX. ¼ MILE)
- 13 – GATEWAY (EMERGENCY & MAINTENANCE VEHICLES ONLY)
- 14 – FLEXIBLE SEATING
- 15 – SHADE PAVILION
- 16 – BIKE RACKS
- 17 – PICNIC GROVE
- 18 – SEATING ALONG PATH









# Concept B - PLAN











## Possible Themes

River Eco-System

Trees & Treehouse



- Variety of equipment for full workout for 13 and older
- Room for stretching  
Instructional signs
- Individual pieces of equipment with no moving parts
- Poured-in-Place Rubber Safety Surfacing



## Things to Consider

- Concepts A & B
  - Main Entrance Arch
  - Seating styles: types and locations
  - Shelters: types and locations
  - Pathway around open field
- Playground Theme

**Please, let us know your thoughts and ideas**

**[www.mass.gov/dcr/public-comment](http://www.mass.gov/dcr/public-comment)**

## Additional Information

- Recording and tonight's slide deck will be available at:
  - [www.mass.gov/dcr/past-public-meetings](http://www.mass.gov/dcr/past-public-meetings)
- If you have comments on this project:
  - *Submit online:* [www.mass.gov/dcr/public-comment](http://www.mass.gov/dcr/public-comment)
  - *Deadline: Thursday, February 22, 2024*

*Please note: the contents of comments submitted to DCR, including your name, town and zip code, will be posted on DCR's website. Additional contact information provided, notably email address, will only be used for outreach on future updates to the subject project or property.*

- If you wish to subscribe to a DCR general information or project-related listserv: contact DCR's Office of Community Relations via email at [mass.parks@mass.gov](mailto:mass.parks@mass.gov)