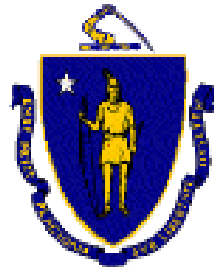




MASSACHUSETTS DEPARTMENT OF
CONSERVATION AND RECREATION

Ryan Park Site Improvements

Public Listening Meeting
June 1, 2023



Commonwealth of Massachusetts

Governor

Maura Healey

Lieutenant Governor

Kim Driscoll

Energy and Environmental Secretary

Rebecca L. Tepper

Department of Conservation and Recreation Commissioner

Brian Arrigo



DCR Mission Statement

*To protect, promote, and enhance our
common wealth of natural, cultural
and recreational resources
for the well-being of all.*

Meeting Logistics

- You will have the opportunity to submit comments over the course of the next two weeks at:
 - DCR Public Comments
<https://www.mass.gov/forms/dcr-public-comments>
- Two ways to ask questions during the meeting
 - Use chat feature
 - Raise your hand using the Zoom function, and you will be given permission to unmute and speak.

Please note that this public information meeting will be recorded; the recording will be a public record.

Agenda

- Introduce the Project Team
- Interim Improvements
- Discuss Program Elements
- Receive Comments
- Review Next Steps



Project Team

Department of Conservation and Recreation

Stella Lensing, PLA, Project Manager

Sandy Libby, Playground Planner

Raul Silva, Deputy Chief Engineer, Parks and Facilities

Daniel Cushing, Director, Public Engagement

BETA Group, Inc.

Scott Ridder, PLA, Project Manager

Andrew Pichette, PLA, Landscape Architect

Sub Consultants

Alpha Survey

The Public Archeology Laboratory

JMBA+ Architects

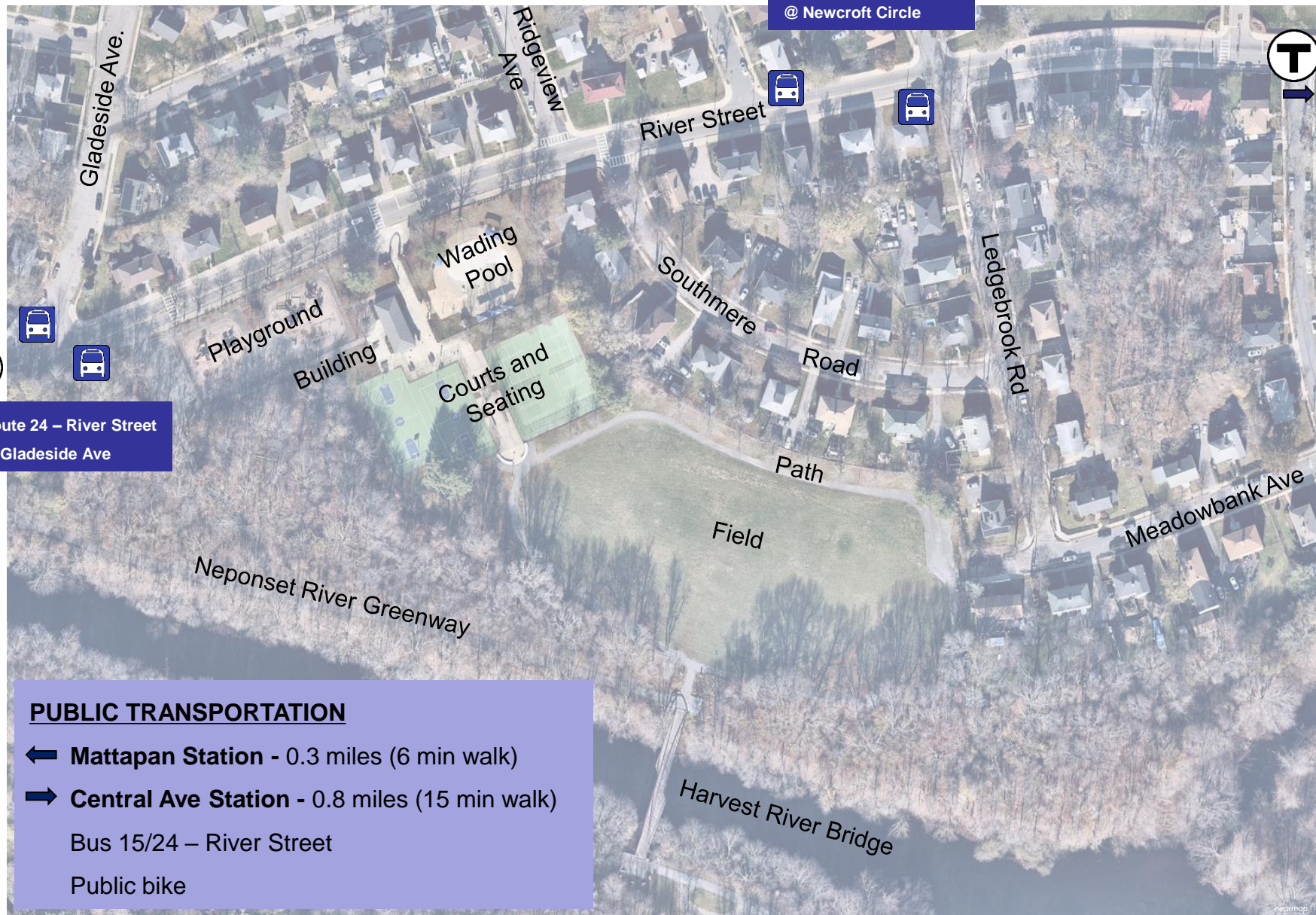
BER Electrical Engineer



Route 24 – River Street
@ Gladeside Ave



Route 24 – River Street
@ Newcroft Circle



PUBLIC TRANSPORTATION

- ← **Mattapan Station** - 0.3 miles (6 min walk)
- **Central Ave Station** - 0.8 miles (15 min walk)
- Bus 15/24 – River Street
- Public bike

Early Action Items

- Repair pathways around playground
- Re-Install benches on concrete pads ✓
- Redo courts
 - Tennis and Pickleball ✓
 - Basketball ✓
- Refresh engineered wood fiber playground surface



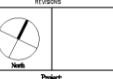
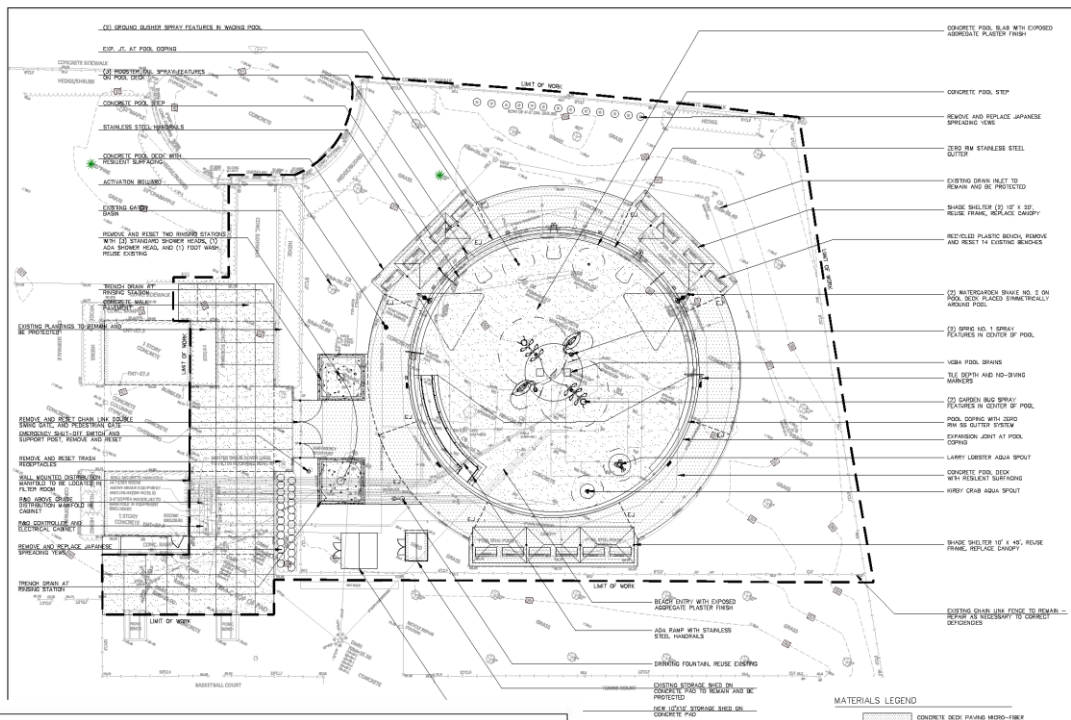
Wading Pool

- Complete wading pool improvements to increase size and add spray more features at the same location.
- Avoid impacts to seasonal operation



Wading Pool

- Pool size is doubled
- New Spray features
- New benches, shade and rinsing stations
- Rubber surfacing



Construction Bid Documents

RYAN WADING POOL

350 RIVER STREET, HYDE PARK, MASSACHUSETTS 02126

THE MASSACHUSETTS DEPARTMENT OF CONSERVATION AND RECREATION

CONTRACT NO. P23-3499-C12A



251 CAUSEWAY STREET, SUITE 600
BOSTON, MASSACHUSETTS 02114
Brian Arrigo - COMMISSIONER

MAY 1, 2023

ENGINEER:
AECOM
1 FEDERAL STREET
BOSTON, MASSACHUSETTS 02110
TEL (617) 723-1700 FAX (617) 723-4655

LANDSCAPE ARCHITECT:
CAROLYN COONEY & ASSOCIATES
MILFORD, MASSACHUSETTS 01870
TEL (978) 678-0425 FAX (978) 678-0667

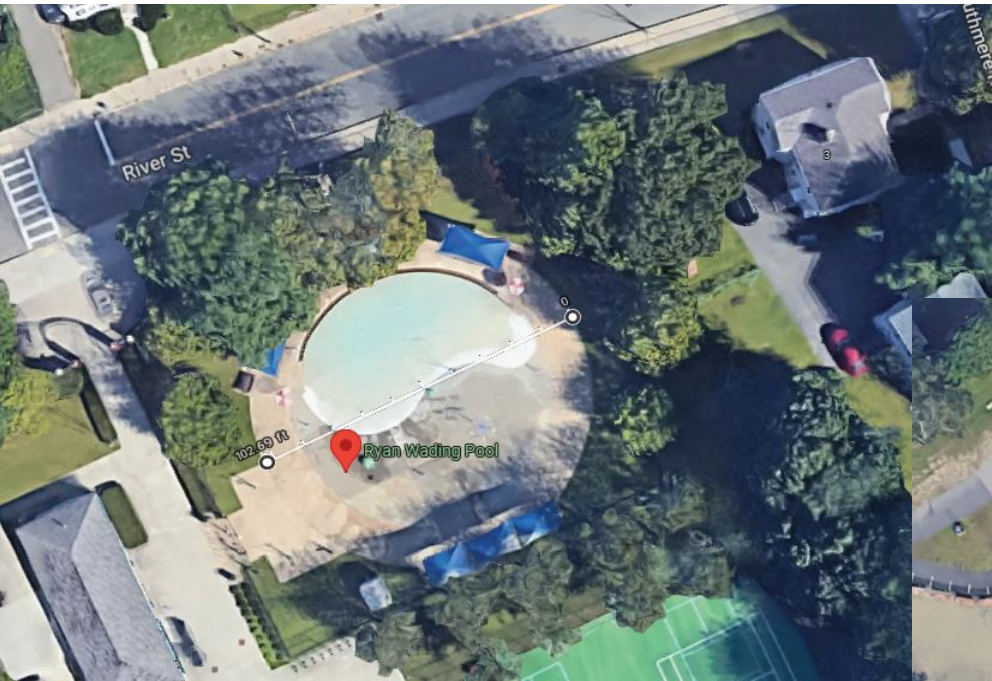
Locus Plan



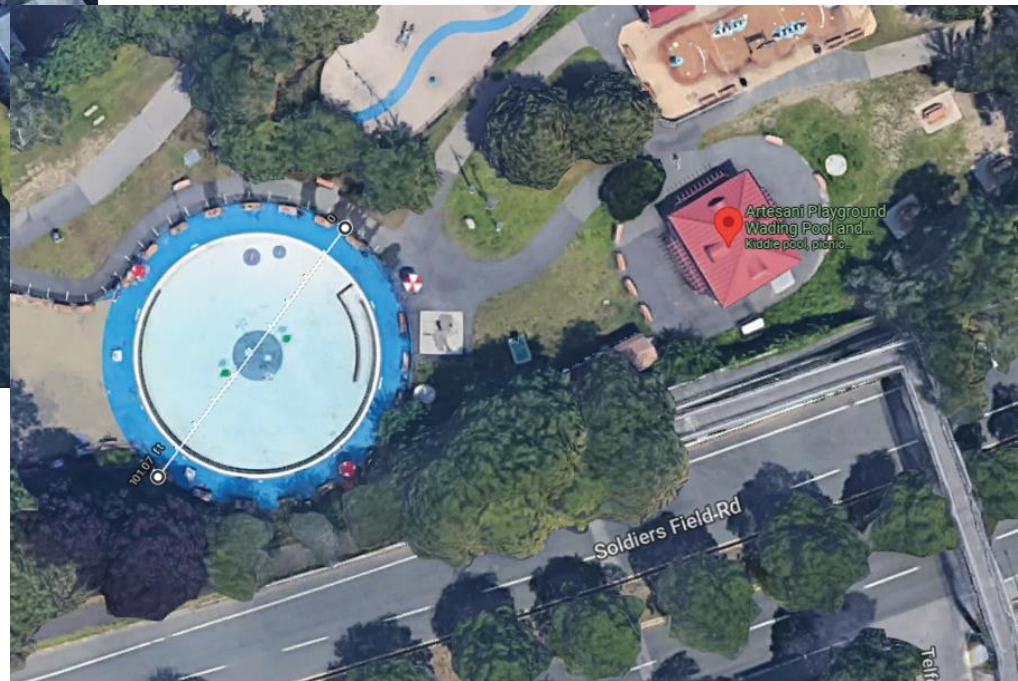
Index of Drawings

- | | |
|--------|--|
| 1 of 1 | EXISTING CONDITIONS PLAN |
| C.1 | CONSTRUCTION ACCESS & EROSION CONTROL PLAN |
| C.2 | EROSION CONTROL DETAILS |
| C.3 | DEMOLITION PLAN |
| C.4 | MATERIALS PLAN |
| C.5 | FOUNDATION PLAN |
| C.6 | LAYOUT PLAN |
| C.7 | GRAZING PLAN |
| C.8 | SPRAY FEATURE PLUMBING & ELECTRICAL PLAN |
| C.9 | WADING POOL SECTION A-A |
| C.10 | WADING POOL SECTION B-B |
| C.11 | RAMP SECTION AND ELEVATION |
| C.12 | WADING POOL DRAINAGE PLAN |
| C.13 | WADING POOL DRAINAGE DETAILS |
| C.14 | PAVING & WADING POOL DETAILS |
| C.15 | WADING POOL DETAILS |
| C.16 | WADING POOL DETAILS |
| C.17 | STAINLESS STEEL GUTTER DETAILS |
| C.18 | WADING POOL ACCESSORY DETAILS |
| C.19 | SPRAY FEATURE DETAILS |
| C.20 | SPRAY FEATURE DETAILS |
| C.21 | WATER DISTRIBUTION MANHOLE DETAILS |
| C.22 | CONTROLLER DETAILS |
| C.23 | UTILITY DETAILS |
| C.24 | SITE FURNISHINGS DETAILS |
| C.25 | SITE DETAILS |
| C.26 | SITE DETAILS |
| C.27 | SITE DETAILS |
| L.1 | PLANTING PLAN |
| L.2 | PLANTING DETAILS |
| E.1 | BONDING & GROUNDING PLAN |
| E.2 | FILTRATION SYSTEM WIRING SCHEMATIC |
| M.1 | FILTER ROOM DEMOLITION PLAN |
| M.2 | WADING POOL FILTER SYSTEM PLAN |

Wading Pool



Ryan Pool - Existing



Ryan Pool – After (*image of Artesani Pool*)

Ryan Park, Mattapan

Ryan Bath House - Public Restrooms

Exterior Improvements

- Windows, Paint, Accessibility

Interior Improvements

- Lifeguard Office & First Aid
- Minor Restroom
- Equipment



Park Elements

Parking

Trailhead and Picnic

Activity Area

Playground, Building & Wading Pool Area, Courts, Fitness Area

Circulation

People

Field / Path

People and Vehicles



Aerial Imagery: Nearmap

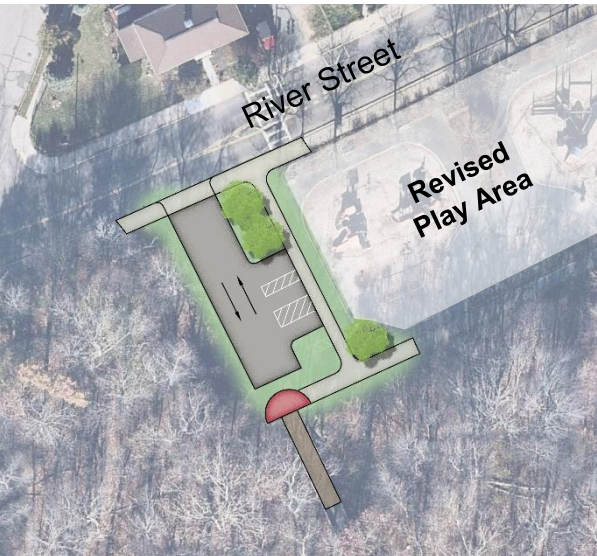
Existing Parking

- 9 Total Parking Spaces, including 2 Accessible Spaces
- Dead End Circulation



Aerial Imagery: Nearmap

Improved Parking Design Options



Accessible Parking Only

- + Less parking
- + Improved Access to Greenway
- Less parking

*** Cool pavement – alternative to typical asphalt*



Improved Parking Lot

- + Additional Parking
- + Improved Circulation
- Increased impervious
- Less play space

*** Cool pavement – alternative to typical asphalt*



No Parking

- + Added Green Space
- + Improved Trailhead
- + Re-aligned Crosswalk
- No off-street parking

Active Recreation Areas

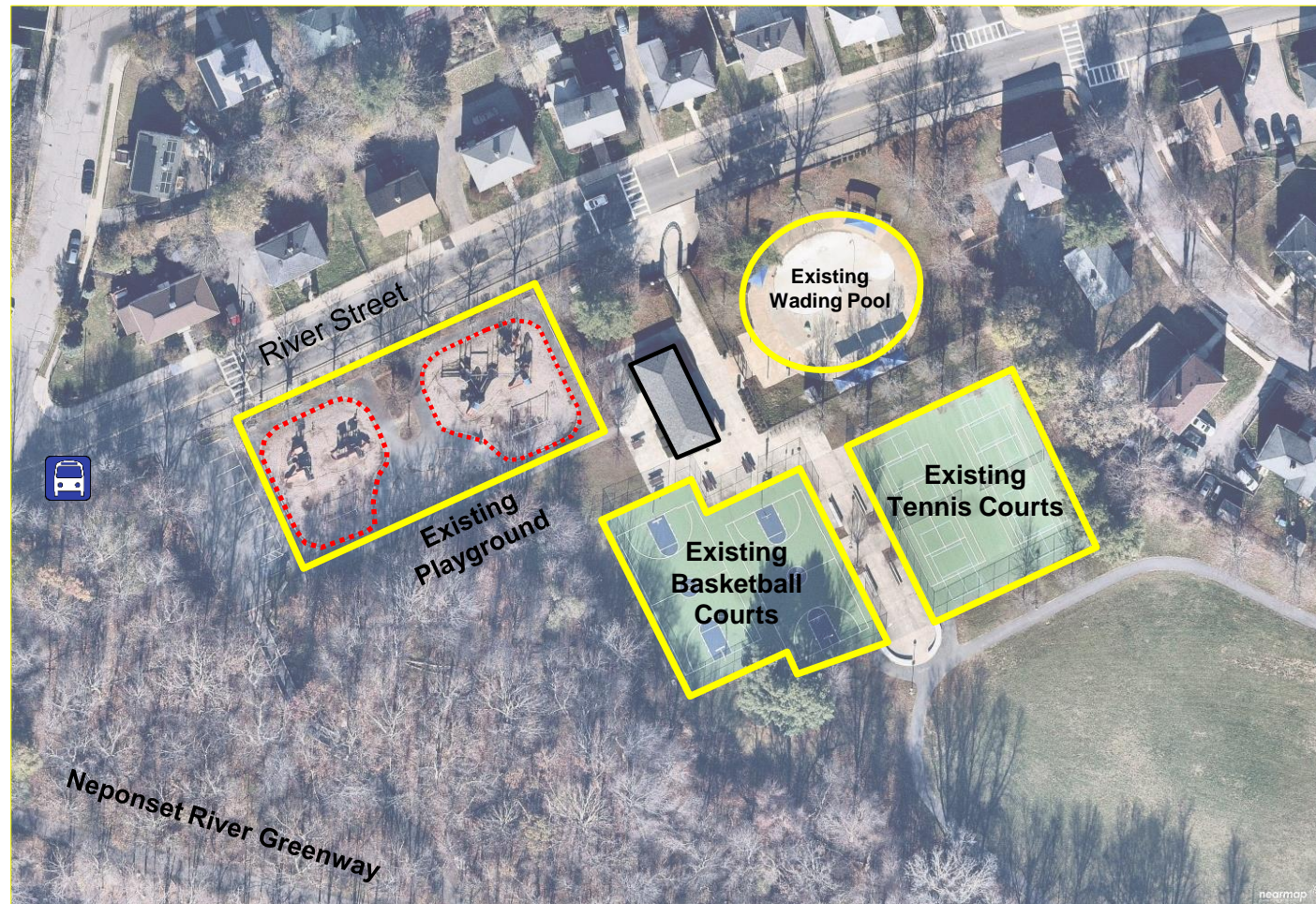
Existing Elements

Playgrounds -17,500 SF+/-

Wading Pool – 8,500 SF

Courts – 26,500 SF

Building – 1,650 SF



Aerial Imagery: Nearmap

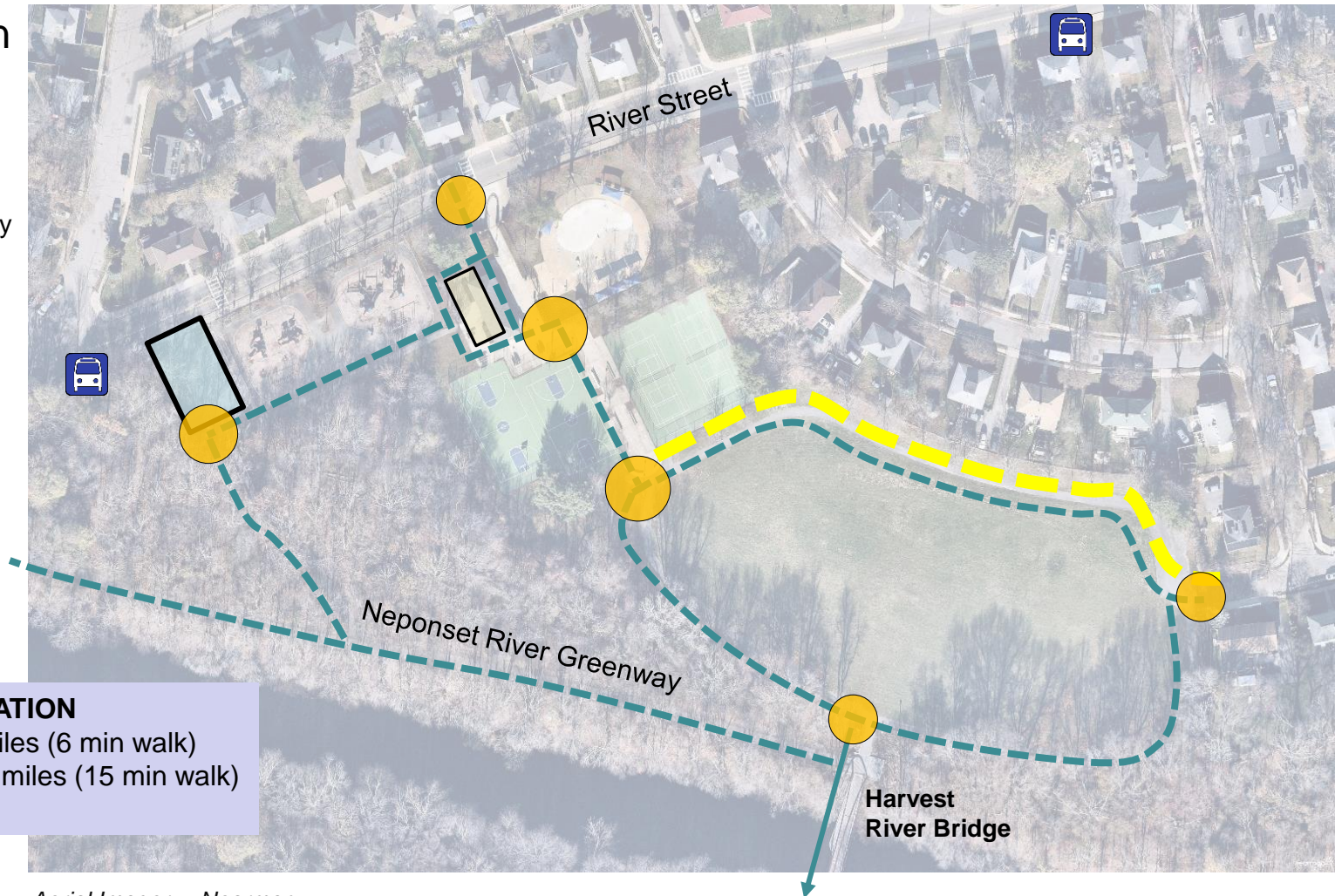
Circulation

- - - Pedestrian
- - - Vehicular
Maintenance/
Emergency Only
- Nodes
- Parking



PUBLIC TRANSPORTATION

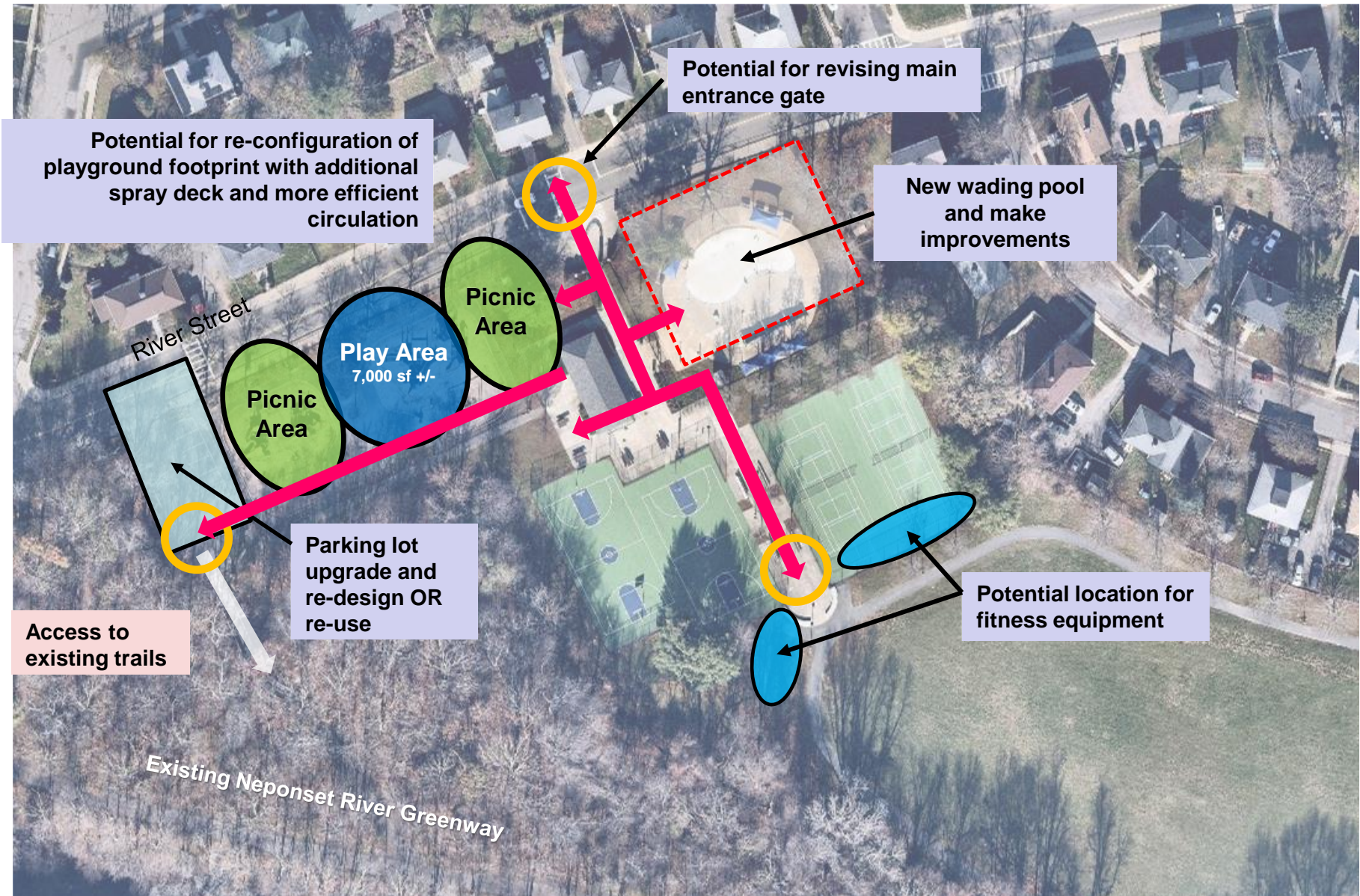
Mattapan Station 0.3 miles (6 min walk)
Central Ave Station 0.8 miles (15 min walk)
Bus 24 – River Street



Aerial Imagery: Nearmap

Ryan Park, Mattapan

Initial Ideas for Discussion



Questions / Discussion

Things to Consider

- Parking
- Main Entrance
- Playground Theme
- Spray Deck
- Fitness Equipment
- Seating / Gathering / Picnic Space

Please, let us know your thoughts and ideas

www.mass.gov/dcr/public-comment

BECOME A LIFEGUARD!



BONUSES AVAILABLE!



WORK OUTSIDE!



FREE TRAINING!



LIFEGUARDS
\$22 - \$23/HOUR



SUPERVISORS
\$26 - \$27/HOUR

SEASONAL HELP NEEDED!

APPLY TODAY!



Competitive Pay!



**Locations
all across the
Commonwealth!**



**Jobs available at state
beaches, campgrounds,
pools, parks, golf courses,
visitor centers, and more!**

Additional Information

- Recording and tonight's slide deck will be available at:
 - www.mass.gov/dcr/past-public-meetings
- If you have comments on this project:
 - *Submit online:* www.mass.gov/dcr/public-comment
 - *Deadline: Thursday, June 15, 2023*

Please note: the contents of comments submitted to DCR, including your name, town and zip code, will be posted on DCR's website. Additional contact information provided, notably email address, will only be used for outreach on future updates to the subject project or property.

- If you wish to subscribe to a DCR general information or project-related listserv: contact DCR's Office of Community Relations via email at mass.parks@mass.gov

Accessible Parking Only

- + Less parking
- + Improved access to the greenway
- Less parking

*** Cool pavement –
alternative to typical asphalt*



Improved Parking

- + Additional Parking
- + Improved circulation
- Increased paving
- Less play space



Aerial Imagery: Nearmap

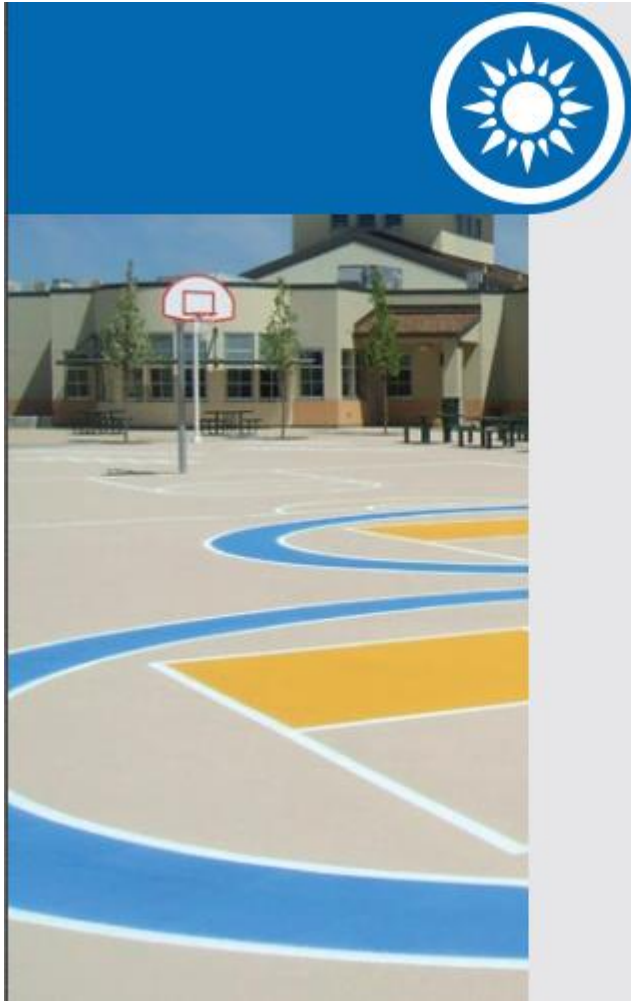
Trailhead

- + Added green space
- + Improved Trail head
- + Possible re-aligned crosswalk
- No off-street parking



Aerial Imagery: Nearmap

Cool Pavement



SOLAR-REFLECTIVE

Solar-Reflective Colors use special technology designed to cool high-traffic areas without limiting color choices to white or light colors. Solar-Reflective Colors reduce Urban Heat Island Effect and the temperature of asphalt surfaces while resisting UV damage and degradation of asphalt to create a more comfortable environment. These colors are typically used in pedestrian and vehicular high-traffic areas such as parks, schools, playgrounds, and non-covered areas that experience direct sunlight.