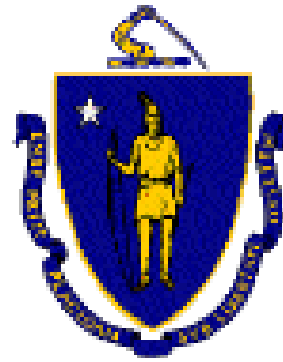


Rynne Day-Use Site Renovation Conceptual Design

Lowell Heritage State Park
Lowell, MA

May 15, 2025





Commonwealth of Massachusetts

Governor

Maura Healey

Lieutenant Governor

Kim Driscoll

Energy and Environmental Secretary

Rebecca L. Tepper

Department of Conservation and Recreation Commissioner

Brian Arrigo



DCR Mission Statement

*To protect, promote, and enhance our
common wealth of natural, cultural
and recreational resources
for the well-being of all.*

Meeting Logistics

- You will have the opportunity to submit comments over the course of one week at:
 - DCR Public Comments <https://www.mass.gov/forms/dcr-public-comments>
- Two ways to ask questions during the meeting
 - Use chat feature
 - Raise your hand using the Teams function, and you will be given permissions to unmute and speak.
- *Please note that this information meeting will be recorded; the recording will be a public record.*

PROJECT TEAM

Department of Conservation and Recreation

Ruth Helfeld, Director, Landscape Architecture Section

Danielle Mellett, Project Manager

Sandra Libby, Playground Planner, Design and Project Management

Design Team

Halvorson | Tighe & Bond Studio | Landscape Architect

Bob Uhlig, Vice President of Landscape Architecture & Urban Design

Iris Lin, Senior Landscape Architect & Project Manager

Jessica Choi, Landscape Architect

Tighe & Bond | Environmental Consulting, Civil, Structural, Plumbing, and Electrical Engineering

Chronicle Heritage | Cultural Resources Assessment

Bartlett Tree Expert | Tree Assessment

AGENDA

- **INTRODUCTION**
 - PROJECT TEAM
 - PROJECT SCOPE AND GOALS
- **SITE ANALYSIS**
 - REGIONAL CONTEXT
 - CULTURAL AND NATURAL RESOURCES
 - SITE INVENTORY AND SITE ANALYSIS
- **CONCEPTUAL DESIGN**
 - CONCEPTUAL DIAGRAM
 - SITE PLAN
 - PRECEDENT IMAGES

PROJECT SCOPE AND GOALS

SCOPE

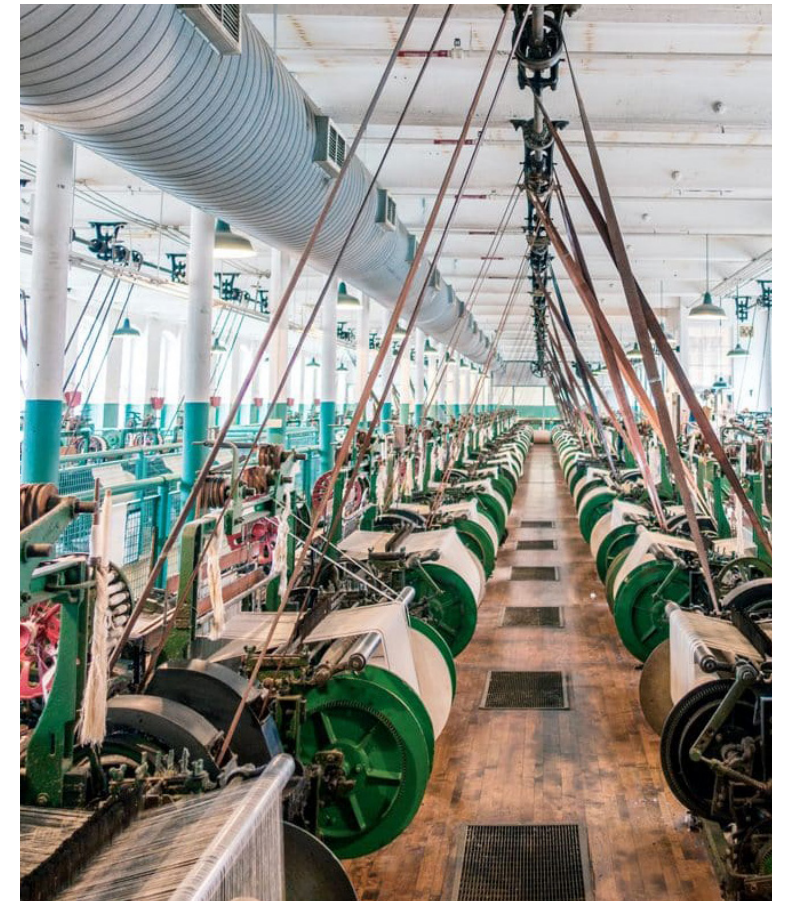
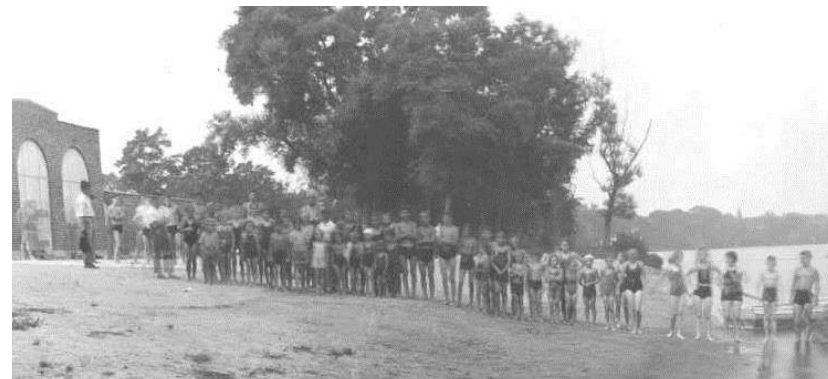
The project will include renovation of a portion of the site adjacent to the Rynne Bathhouse, converting the space into a splash pad, playground and picnic area with the intent of transforming the space into a family friendly outdoor recreation area, improving public safety and pedestrian access.

GOALS

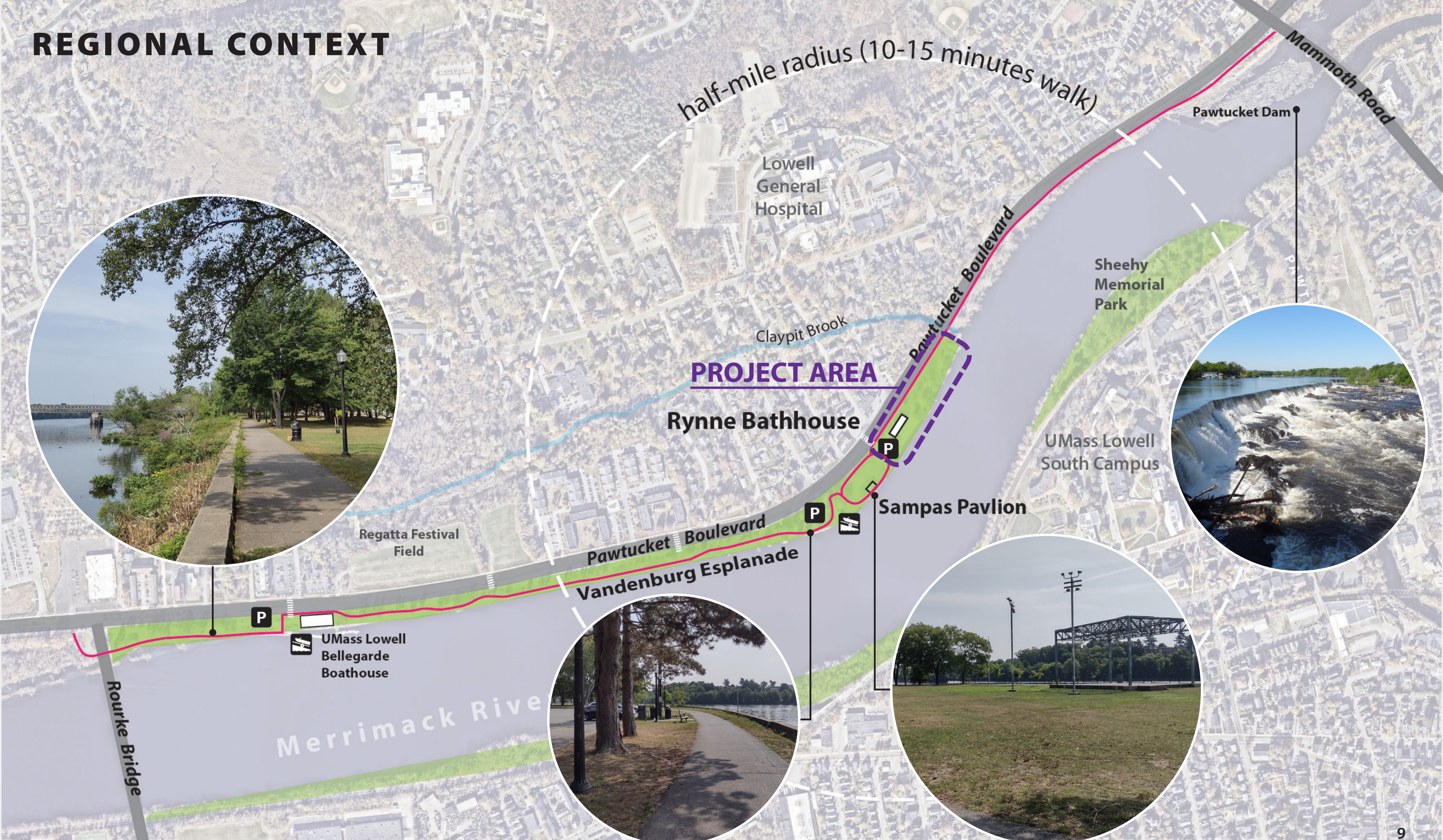
- IMPROVE PUBLIC ACCESS AND CIRCULATION
- RESPECT ECOLOGY OF THE SITE AND IMPROVE WATER QUALITY
- PROTECT EXISTING TREES
- ENHANCE VISITOR EXPERIENCE

CULTURAL AND NATURAL RESOURCES

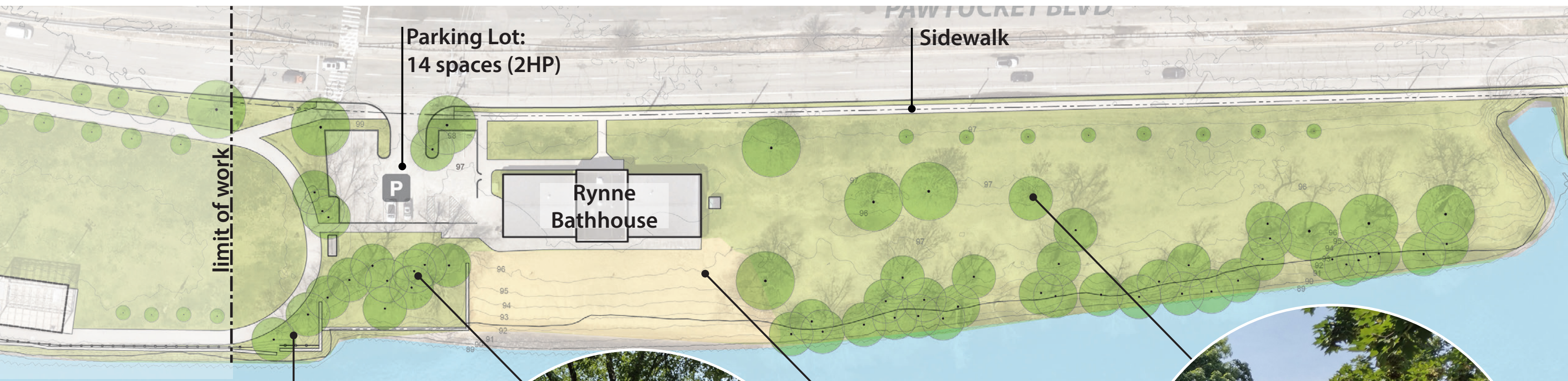
- The Merrimack River has long been a vital resource to both Lowell and the Merrimack River Valley, providing drinking water, supporting diverse habitats, and offering opportunities for outdoor recreation.
- The Merrimack Valley has a rich history as the home of indigenous peoples for thousands of years, whose connection to the land shaped the region.
- The Lowell Mills and Canal System played a pivotal role in marking the beginning of the American Industrial Revolution in the mid to late 1800s.
- The region is home to a rich blend of diverse ethnic communities, each contributing to the cultural fabric of Lowell.



REGIONAL CONTEXT



SITE INVENTORY | EXISTING CONDITIONS



High point with scenic view



Healthy tree grove provides nice shade

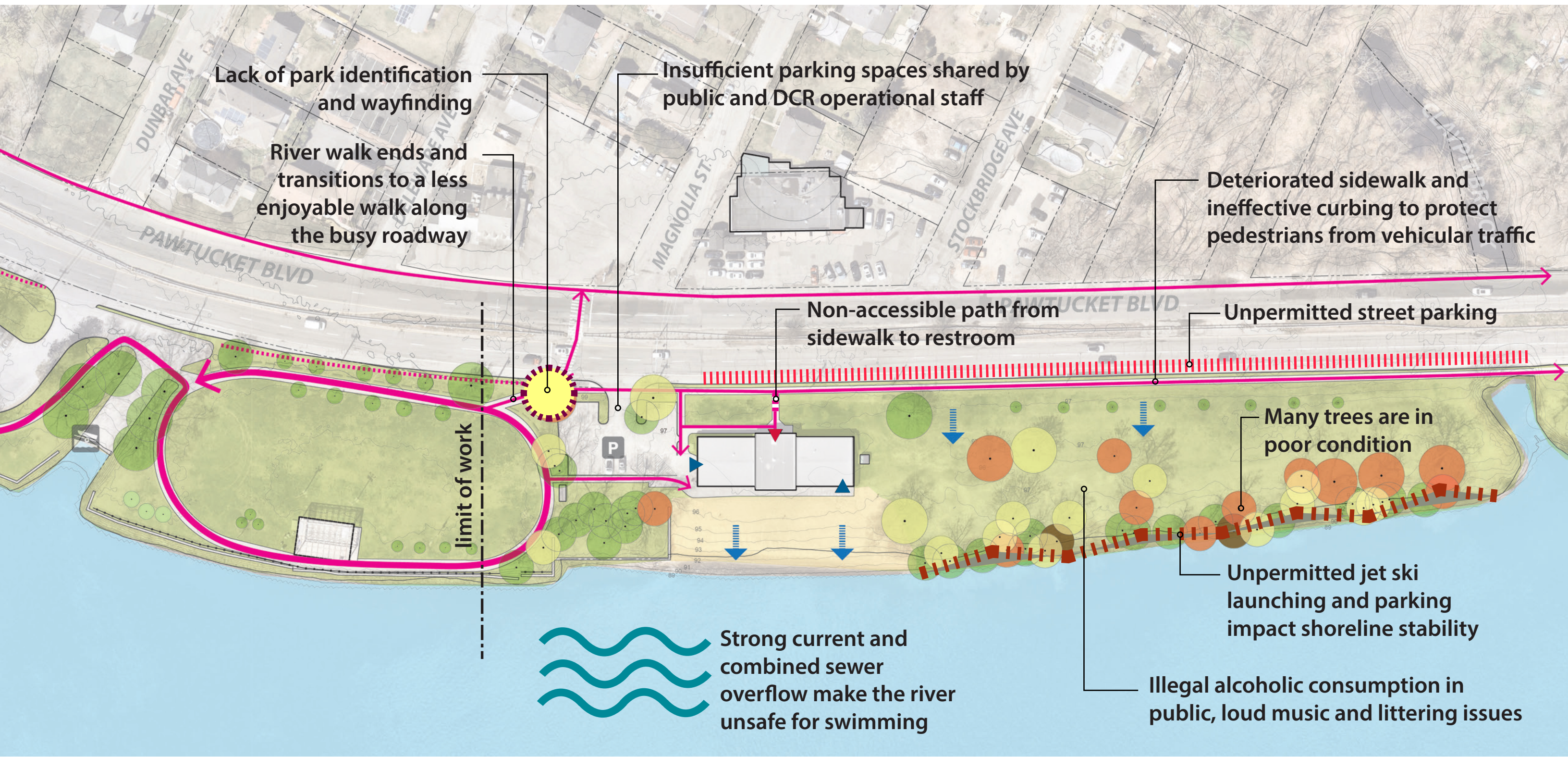


Rynne Beach and Bathhouse with public restrooms



Open lawn with mature trees

SITE ANALYSIS | CHALLENGES

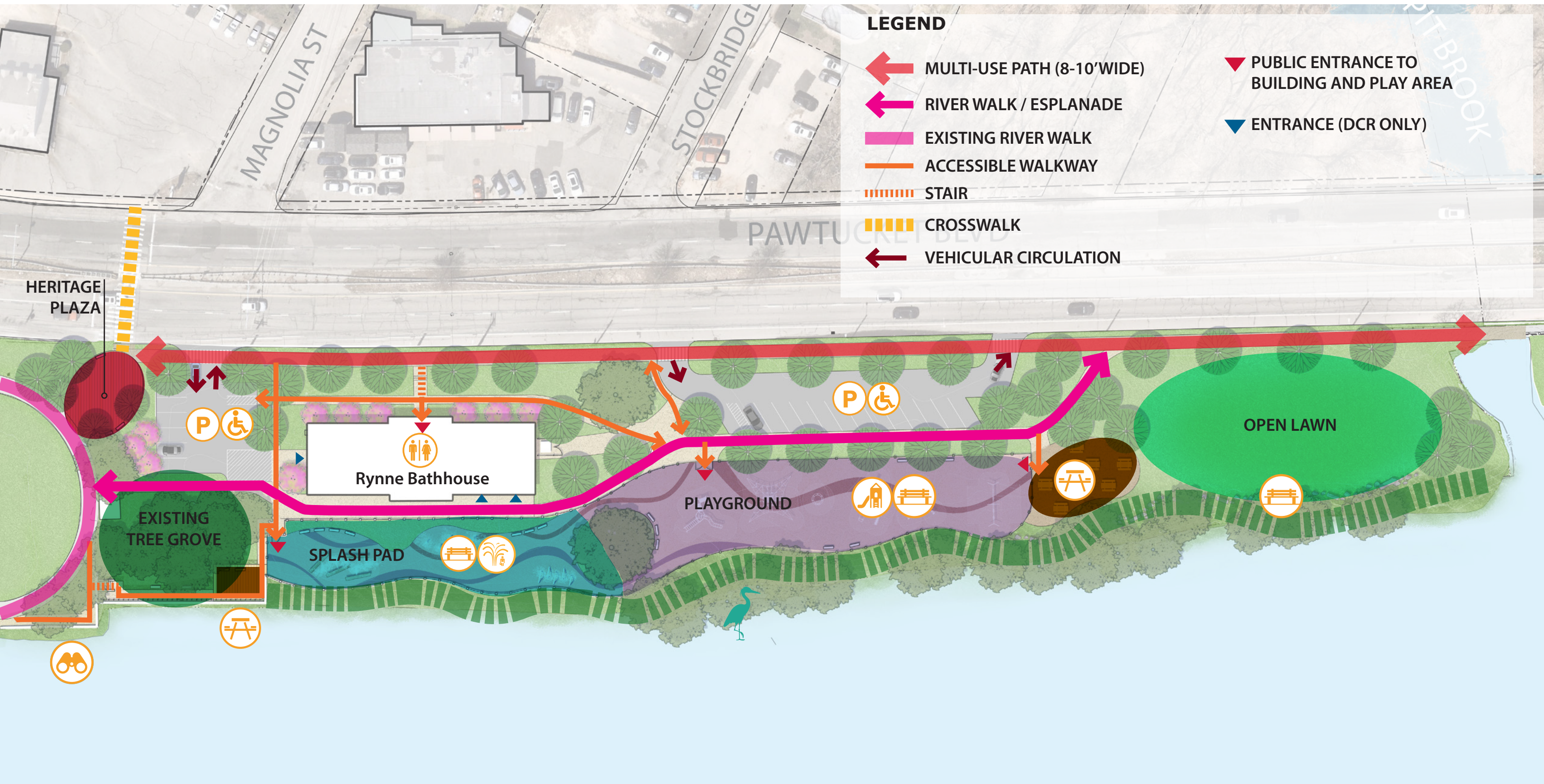


CONCEPTUAL DESIGN | OPPORTUNITIES

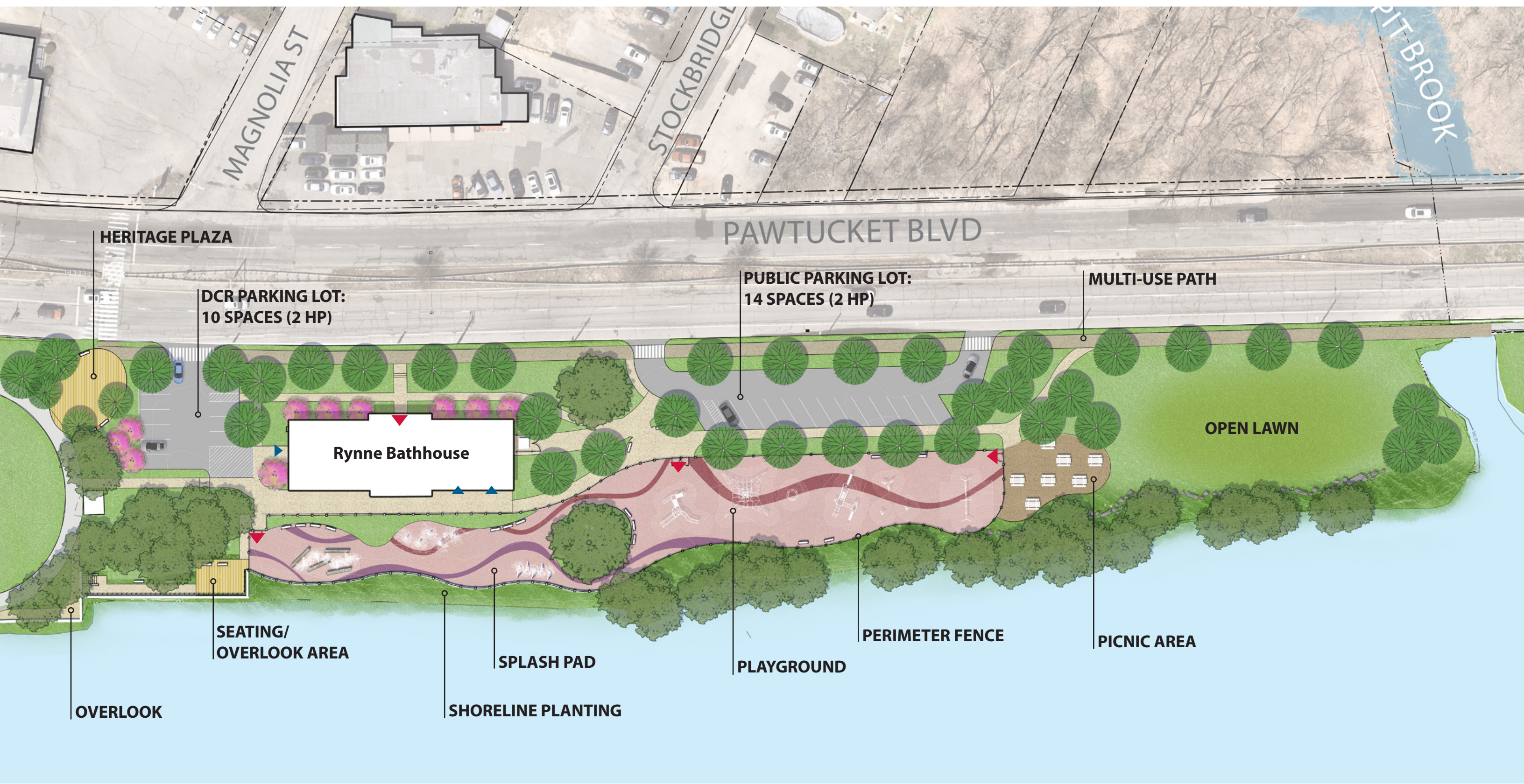
Create a community destination that honors the Merrimack River's history, Lowell's industrial heritage, and the area's diverse communities while enhancing the site's recreational opportunities and preserving its natural resources.



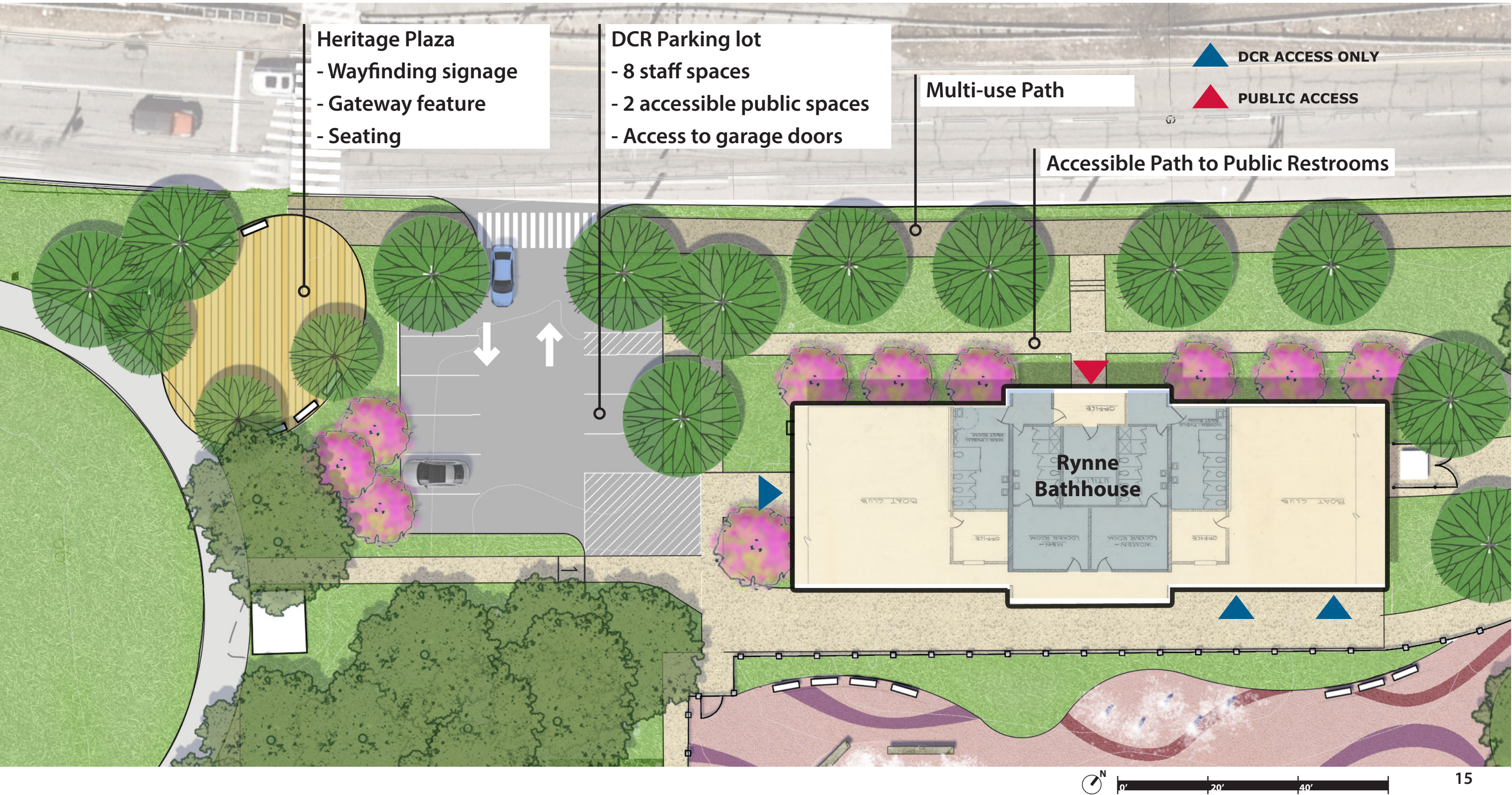
CONCEPTUAL DIAGRAM



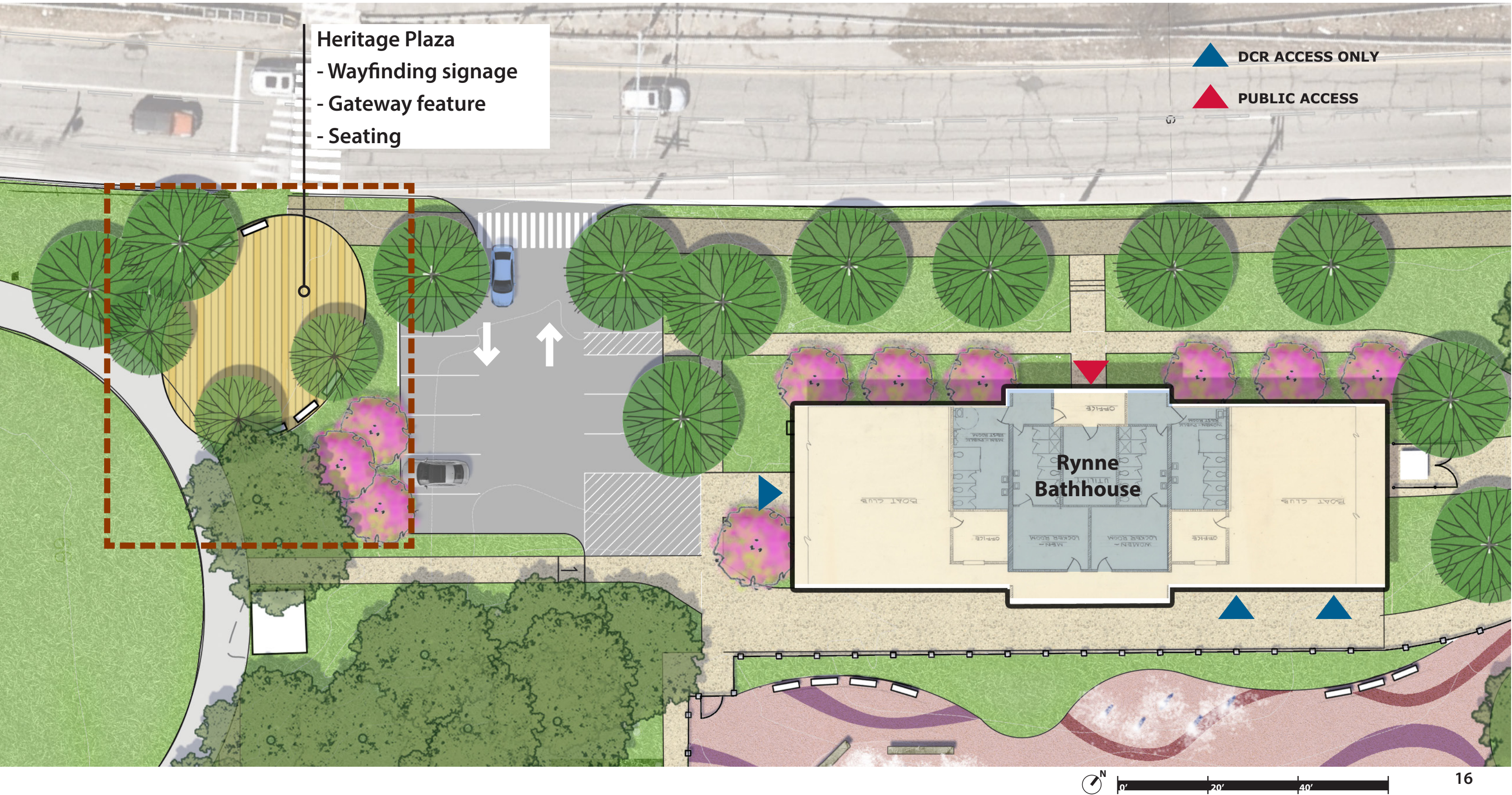
CONCEPTUAL DESIGN - OVERALL PLAN



HERITAGE PLAZA AND RYNNE BATHHOUSE ENLARGEMENT



HERITAGE PLAZA AND RYNNE BATHHOUSE ENLARGEMENT



PRECEDENT IMAGES - HERITAGE PLAZA



Park Identification Signage



Woven Paving Pattern

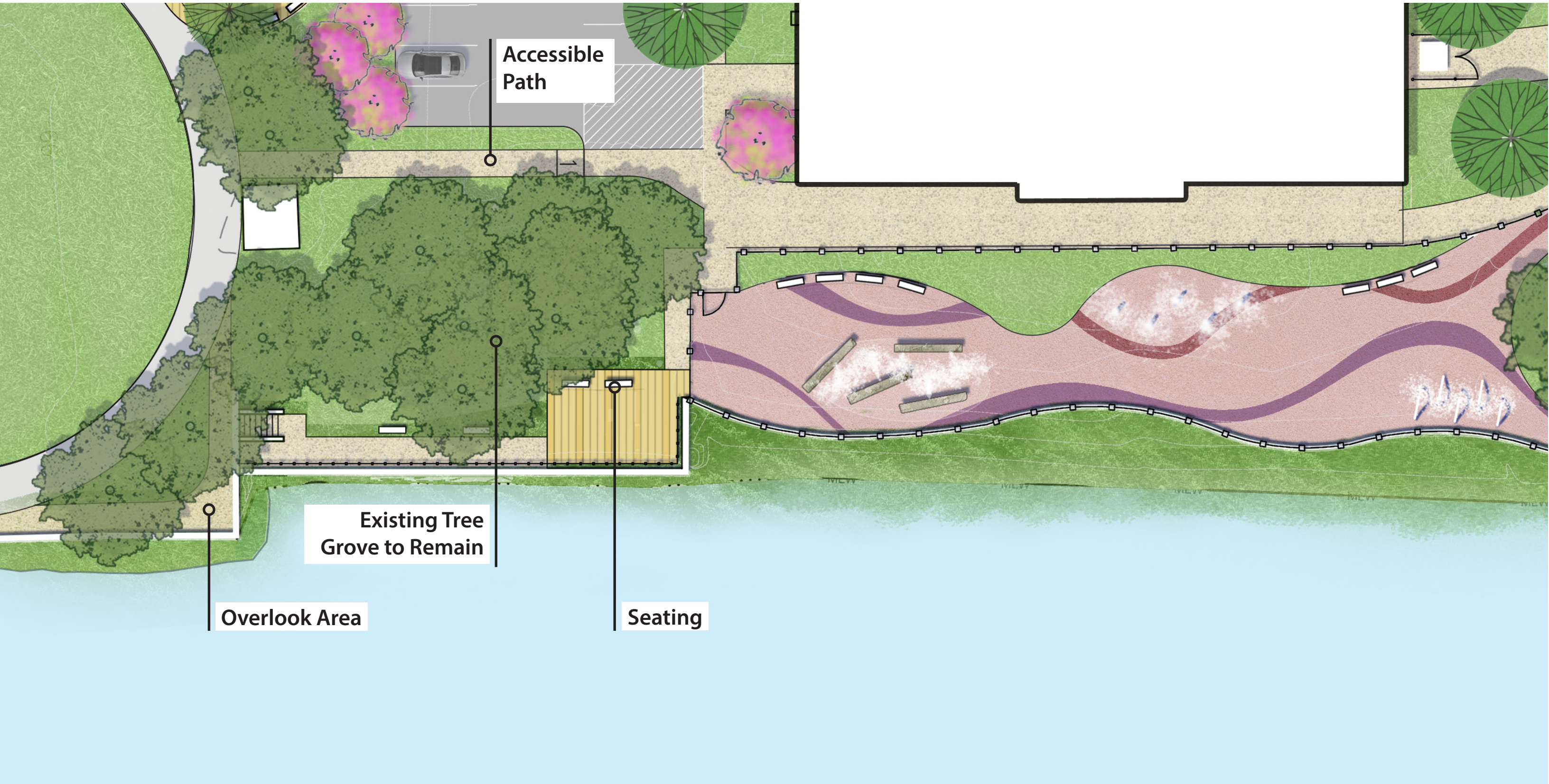


Plaza with Seating

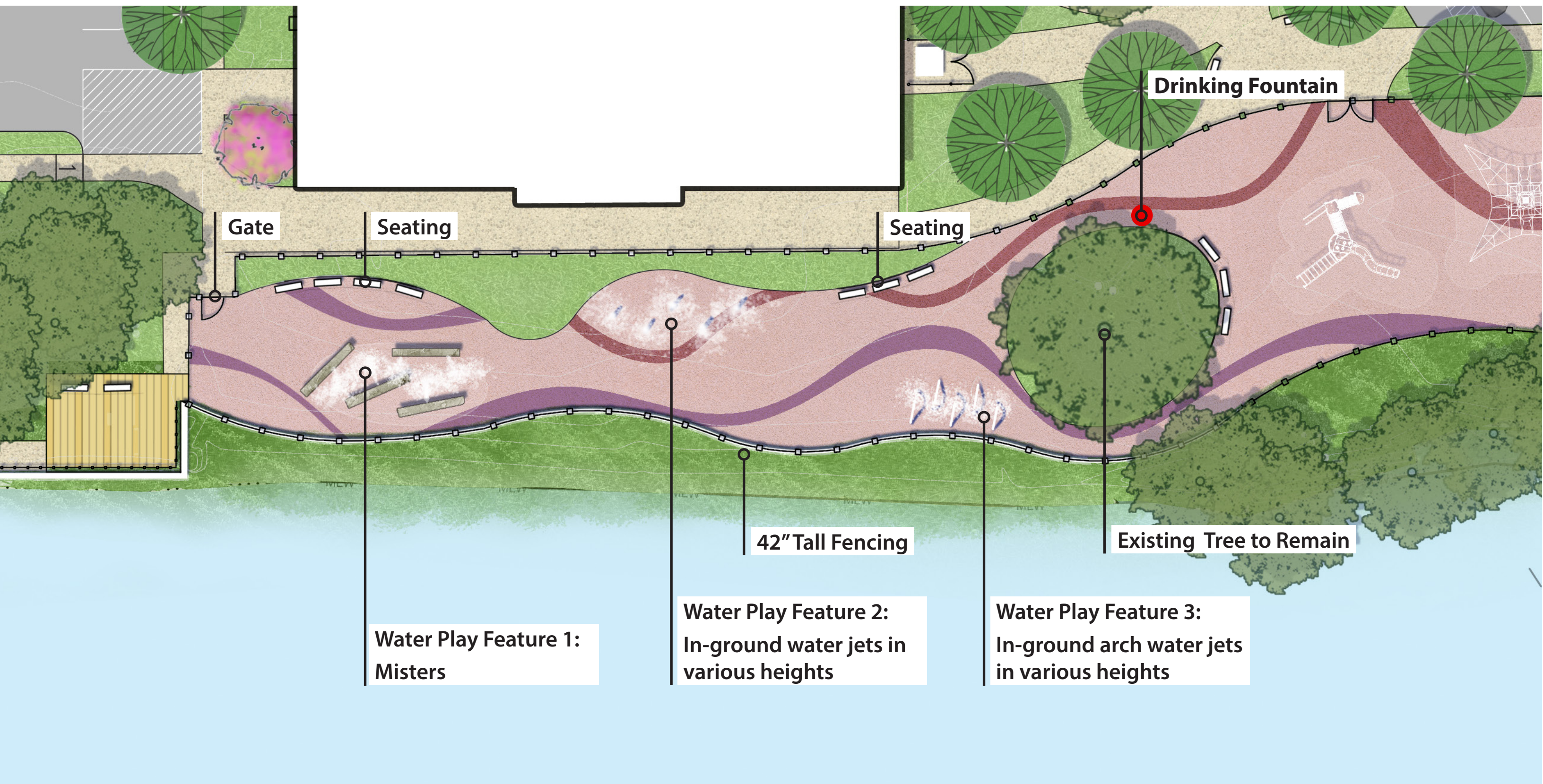


Plaza with Seating

OVERLOOK AREA & RIVER WALK ENLARGEMENT



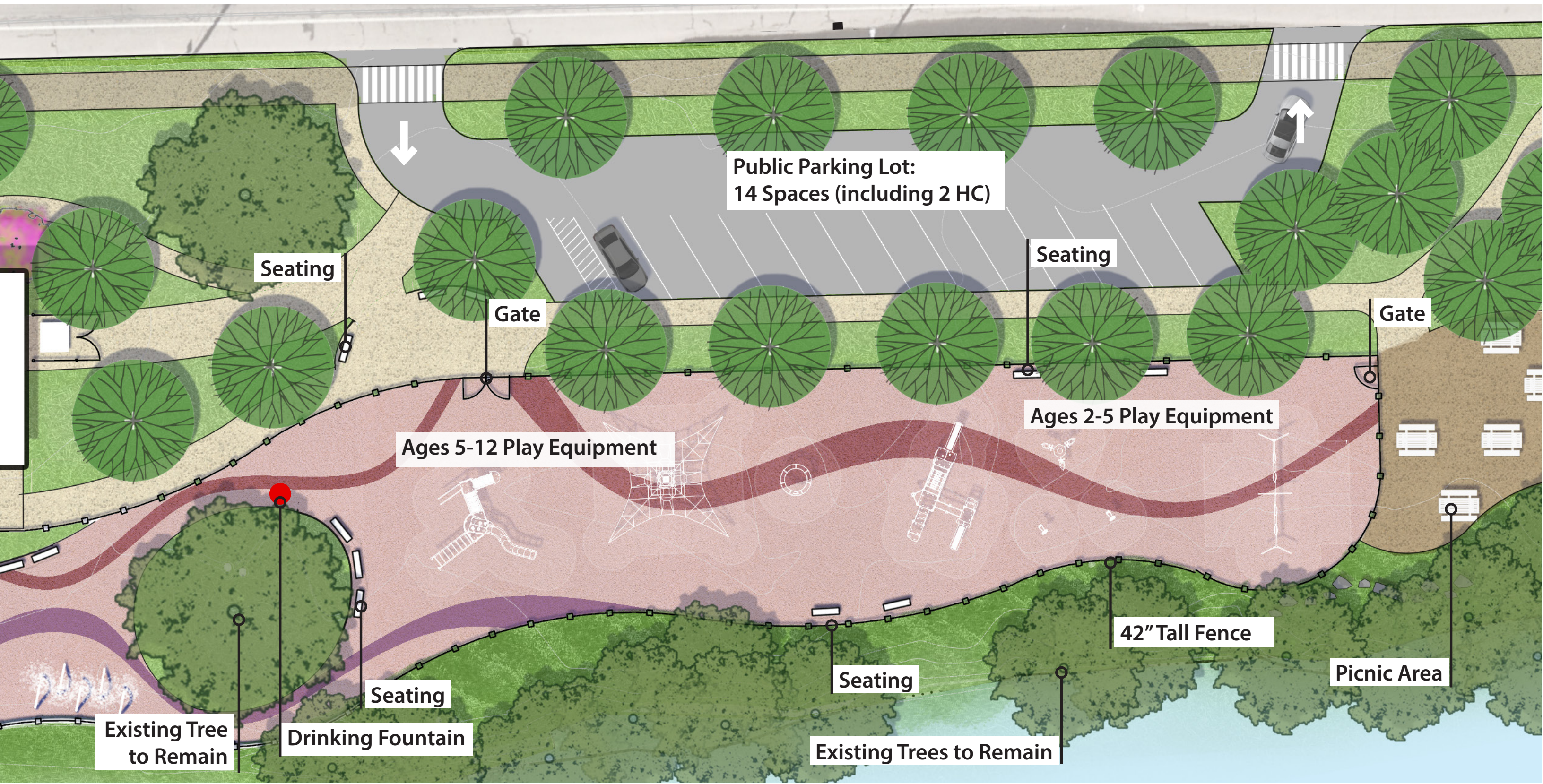
SPLASH PAD ENLARGEMENT



PRECEDENT IMAGES - SPLASH PAD



PLAYGROUND & PARKING LOT ENLARGEMENT



PRECEDENT IMAGES - PLAY EQUIPMENT



PRECEDENT IMAGES - PLAY EQUIPMENT



PRECEDENT IMAGES - Site Furniture



Bench



Bike Rack



Drinking Fountain



Park Sign

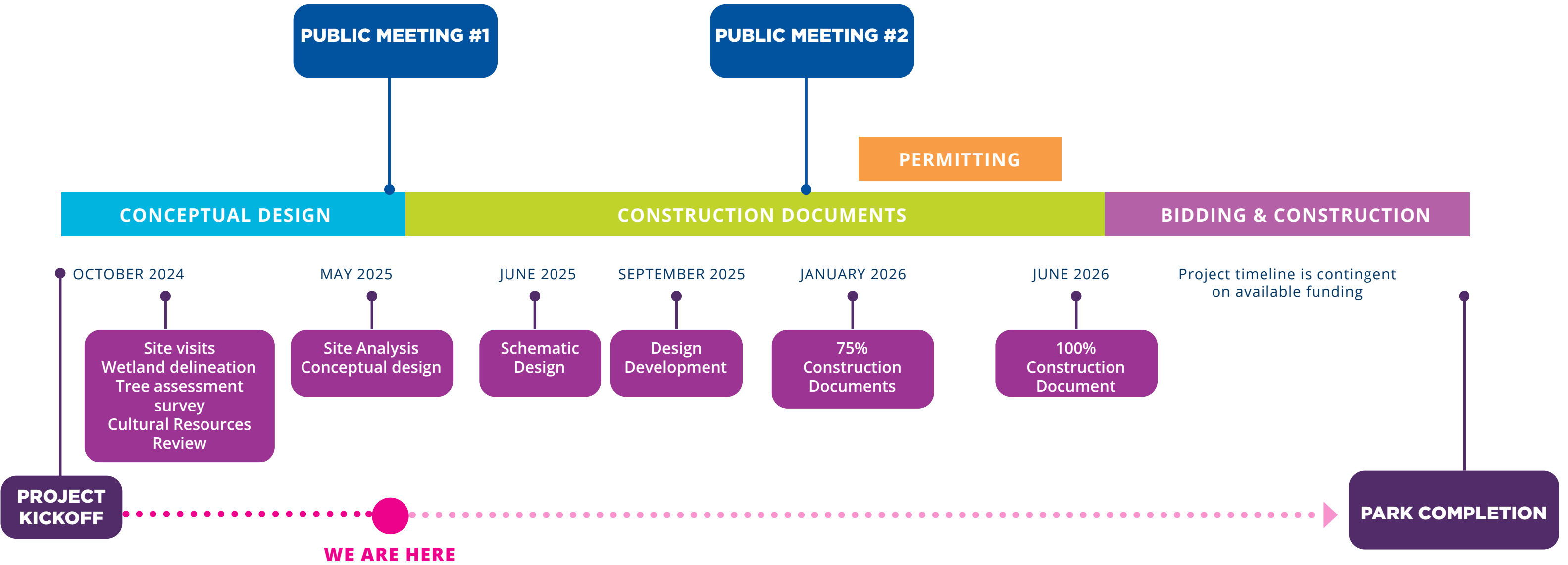


Fence at Playground



Picnic Table

PROJECT SCHEDULE



QUESTIONS AND COMMENTS ?

Additional Information

- Recording and tonight's slide deck will be available at:
 - www.mass.gov/dcr/past-public-meetings
- If you have comments on this project:
 - *Submit online:* www.mass.gov/dcr/public-comment
 - *Deadline: Thursday, May 22, 2025*

Please note: the contents of comments submitted to DCR, including your name, town and zip code, will be posted on DCR's website. Additional contact information provided, notably email address, will only be used for outreach on future updates to the subject project or property.

- If you wish to subscribe to a DCR general information or project-related listserv: contact DCR's Office of Community Relations via email at mass.parks@mass.gov