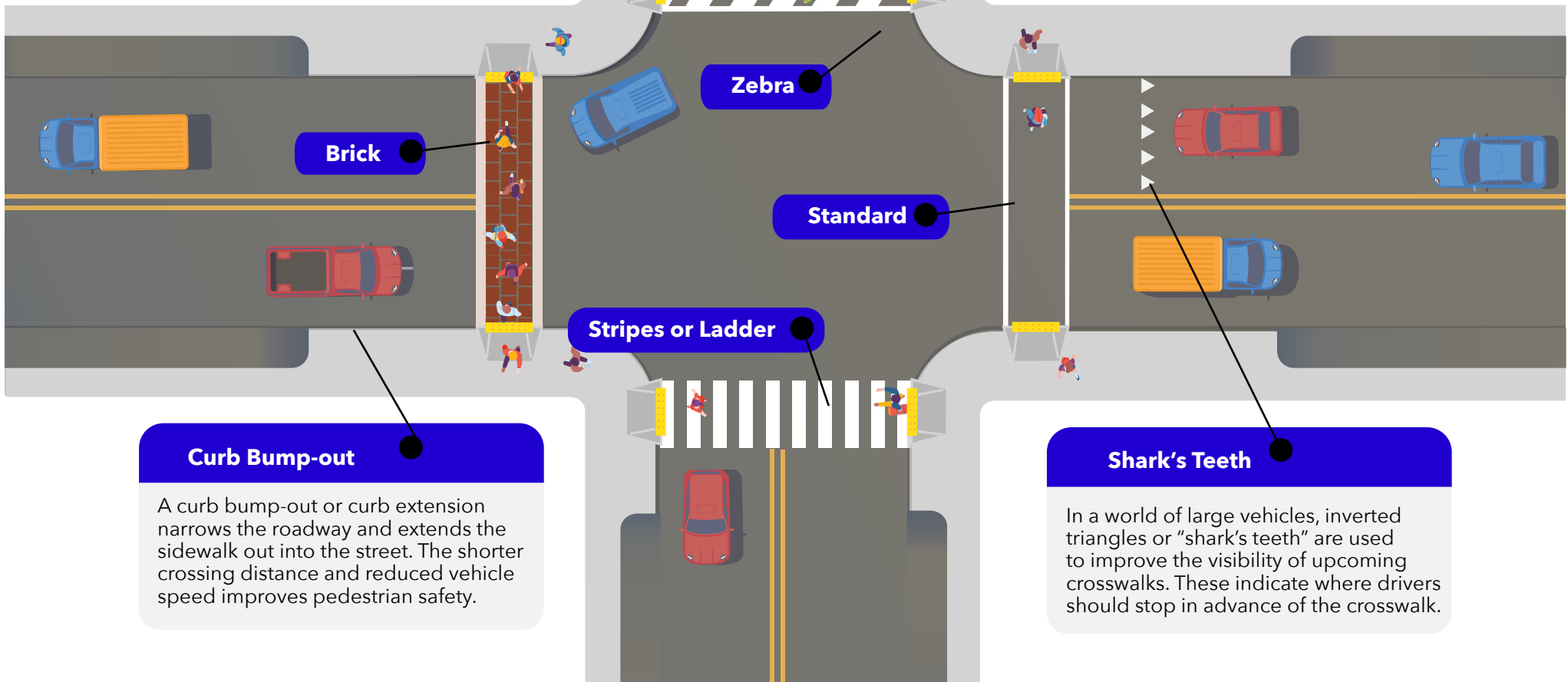


# Safe Driving Around Crosswalks

In 2023, pedestrians accounted for 20% of the lives lost in traffic crashes on our roads.<sup>1</sup> By staying vigilant and slowing down, drivers can significantly reduce pedestrian and bicycle crashes when sharing the road around crosswalks.

## Know Your Crosswalk

While crosswalk patterns can differ, they all serve the same purpose for drivers: slow down and stop to allow people to cross the street safely.



Safe Routes to School (SRTS) is a federally funded program offered by the Massachusetts Department of Transportation. The SRTS Program works to increase safe walking, biking, and rolling among public school students grades K-12 by using a collaborative, community-focused approach that works to bridge the gap between health and transportation. Learn more: [www.mass.gov/safe-routes-to-school](http://www.mass.gov/safe-routes-to-school)

<sup>1</sup>WalkMassachusetts Annual Report: [walkmass.org/fatal-pedestrian-crashes-in-ma-2023/](http://walkmass.org/fatal-pedestrian-crashes-in-ma-2023/)

## Respect the Crosswalk



These signs instruct road users to **SLOW DOWN** and prepare to stop! This signage warns drivers to be aware that there may be people up ahead needing to cross the road.



If you see someone looking to cross the street, come to a complete stop in advance of the crosswalk markings. Give the person crossing a signal such as a hand wave to let them know they are seen – **safety is a two-way street!**

## What are those flashing lights?

Some pedestrian crossing signs include lights that flash to indicate the presence of someone crossing the street.



## It's the Law!



In Massachusetts, a person using a crosswalk has the right-of-way. People driving must yield to anyone crossing the street. It is also illegal to pass another vehicle that has stopped to allow people to cross at a crosswalk<sup>2</sup>

## Tips for Drivers

**Obey the speed limit.** Slowing down not only reduces the risk of injury in the event of a crash, but also increases your field of vision.

**If it's dark, stay sharp!** As the sun goes down or the weather blocks the sun, be extra mindful when driving through pedestrian heavy areas such as school zones. The rate of car crashes involving pedestrians increases in the months of October – March.<sup>3</sup>

**Different abilities, different speeds.** Not everyone can navigate the street with the same speed and ease – remember to respect everyone's ability and have patience. People with visual impairments cannot always make eye contact.

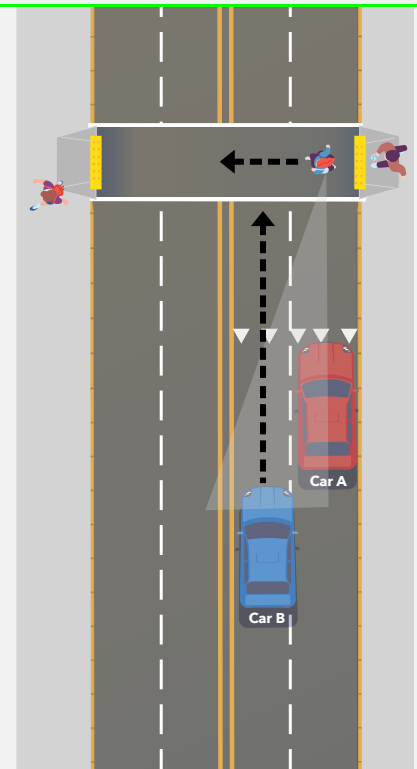
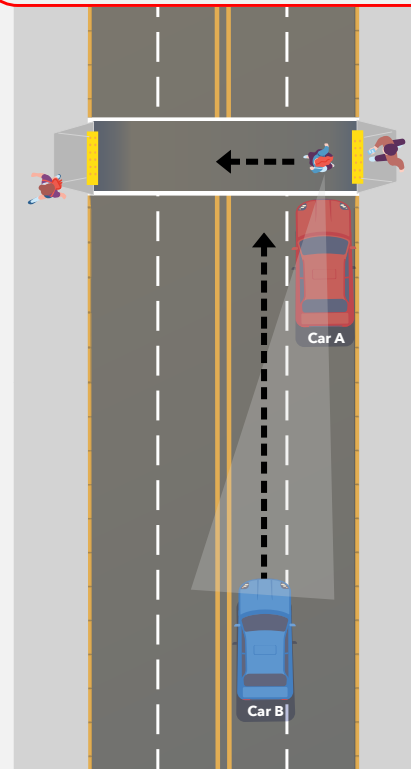
## Stopping at Crosswalks



Stopping too close to a crosswalk can put pedestrians in danger of being hit by another car. The illustration below shows why stopping in advance of the crosswalk improves visibility of both drivers and pedestrians.

**Problem:** Car A stops to let the pedestrian cross. Car A blocks the pedestrian's view of Car B and Car B's view of the pedestrian. Car B doesn't stop and may hit the pedestrian.

**Solution:** Car A stops farther away from the crosswalk. The pedestrian can now see Car B approaching and Car B can see the pedestrian crossing.



<sup>2</sup>[malegislature.gov/Laws/GeneralLaws/PartI/TitleXIV/Chapter89/section11](http://malegislature.gov/Laws/GeneralLaws/PartI/TitleXIV/Chapter89/section11)

<sup>3</sup>Massachusetts Office of Grants and Research Traffic Safety Program: [www.mass.gov/info-details/pedestrian-and-bicyclists-safety](http://www.mass.gov/info-details/pedestrian-and-bicyclists-safety)