

Safety Briefing

January 8, 2025








Table of Contents

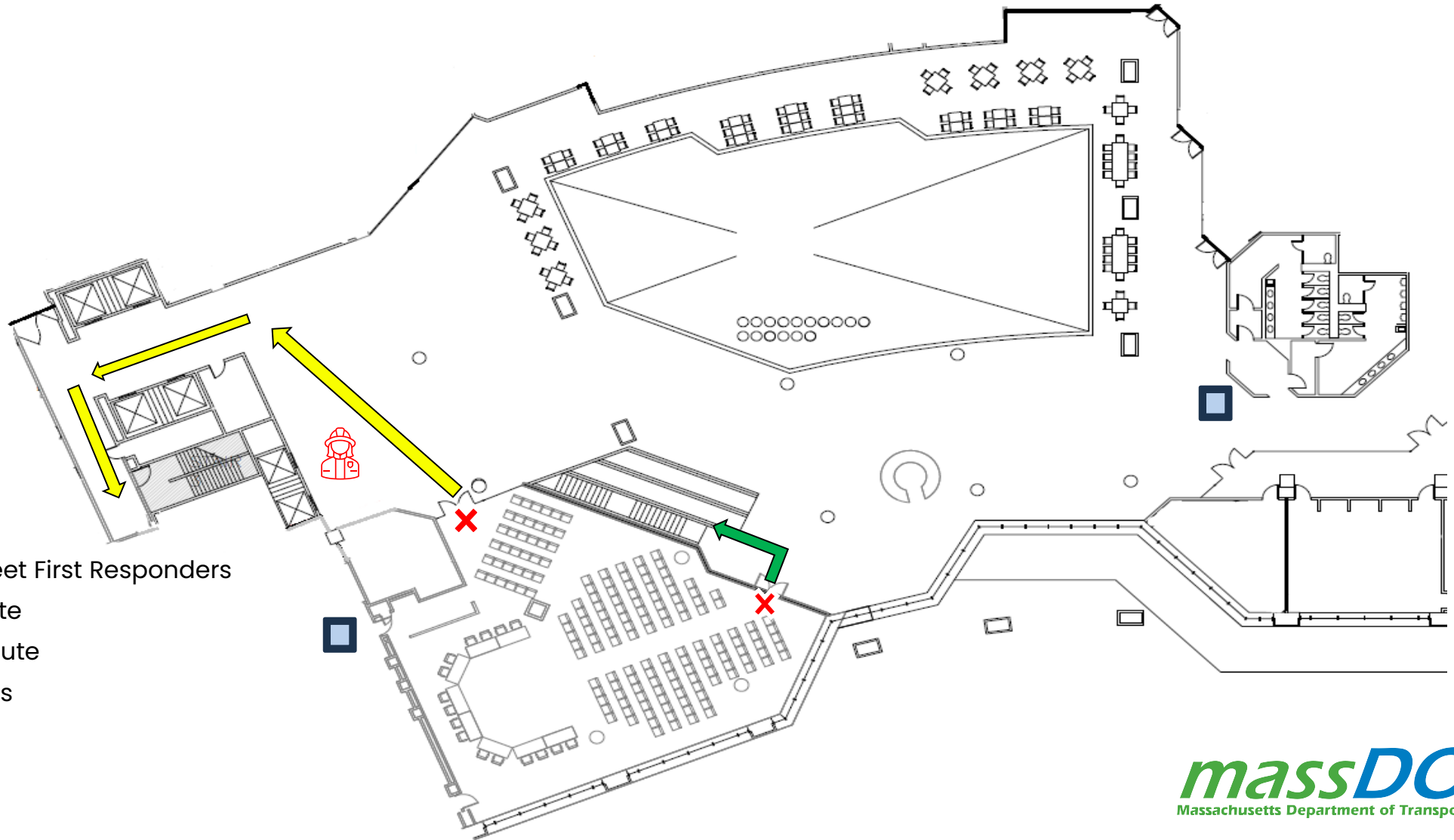
3	Safety Contact
4	Winter Driving: Use Caution
5	Winter Driving Preparation: Before You Go

Safety Contact

3

Legend

-  Rally Point to Meet First Responders
-  Primary Exit Route
-  Alternate Exit Route
-  Fire Extinguishers
-  AED



Winter Driving: Use Caution

4

According to the National Highway Traffic Safety Administration (NHTSA):

- In 2022 there were an estimated 153,620 police reported traffic crashes that occurred when there was snow/sleet conditions at the time of the crash.
 - there were 498 fatal traffic crashes, and an estimated 32,213 injury crashes that occurred when there was snow or sleet conditions at the time of the crash.



Recommendations:

- Increase the distance between your car and the car you are following
- Don't crowd snowplows, or travel along side trucks

<https://ww2.motorists.org/news>

Winter Driving Preparation: Before You Go

5

Stock Your Vehicle

- snow shovel, broom and Ice scraper
- sand or kitty litter
- jumper cables, flashlight, flares and/or emergency markers
- blankets
- first aid kit
- cellphone charger
- water

Keep Your Vehicle Fully Fueled or Charged

Plan Your Route

Pause/Rest on Longer Trips

Always Check Speed



<https://www.nhtsa.gov/winter-driving-tips>

Thank You

