

Safety Briefing

October 16, 2024








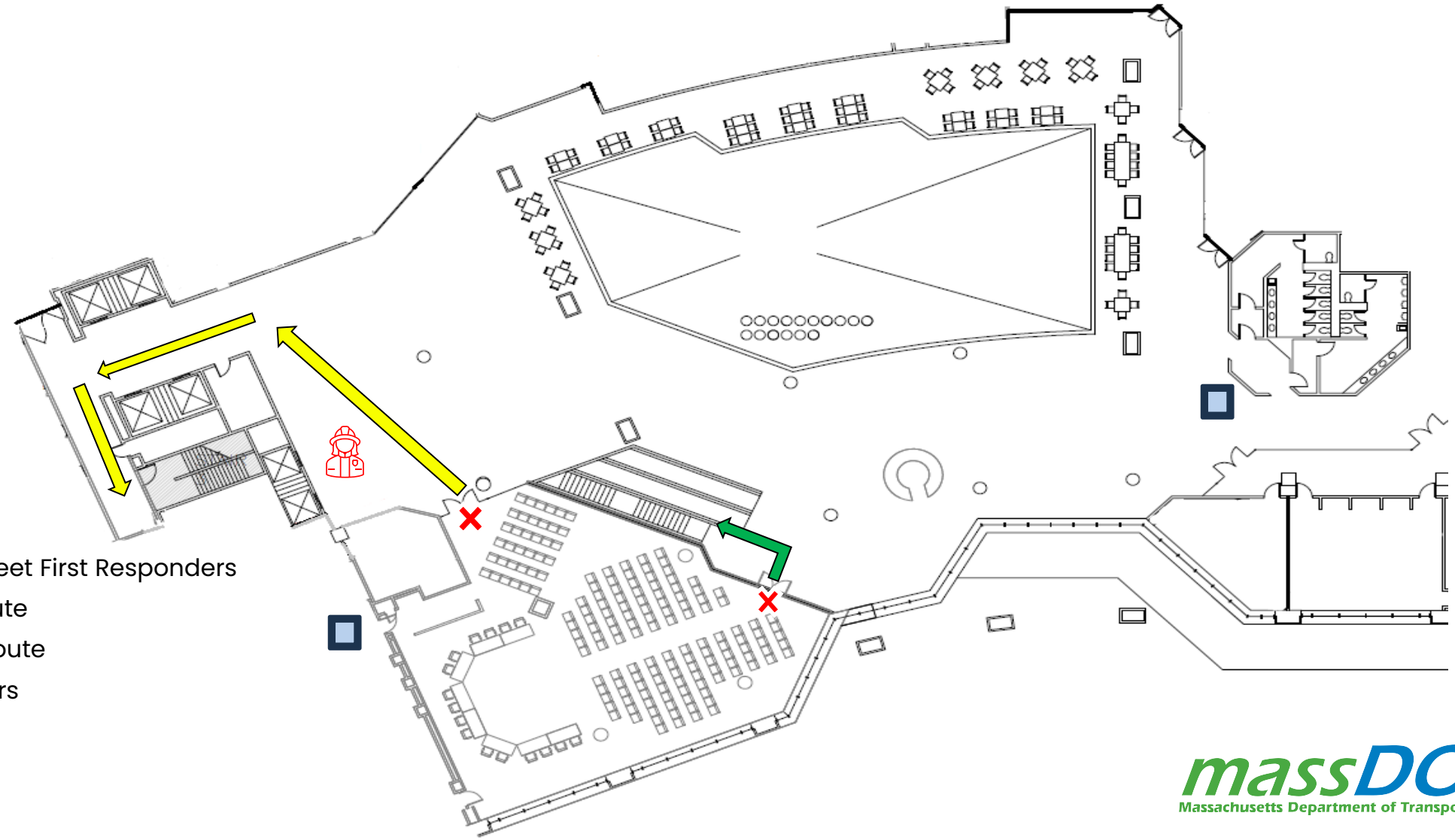
Table of Contents

| | |
|---|----------------------------------|
| 3 | Safety Contact |
| 4 | Pedestrian Fatalities |
| 5 | Halloween Driving Safety Tips |

Safety Contact

Legend

-  Rally Point to Meet First Responders
-  Primary Exit Route
-  Alternate Exit Route
-  Fire Extinguishers
-  AED



Pedestrian Fatalities

In the State of Massachusetts for 2023 there were 363 suspected serious injuries and 63 pedestrian fatalities. As of October 2, 2024, there have been 171 suspected serious injuries and 42 pedestrian fatalities.

| | 2023 | 2024 |
|---------------------------------|------|------|
| Suspected Serious Injury | 363 | 171 |
| Fatal Injury | 63 | 42 |

According to the American Medical Association, 42 years of data from the National Highway Traffic Safety Administration shows the risk of pedestrian fatalities is 43% higher on Halloween compared to any other night. Children between the ages of 4 and 8 are 10 times more likely to be hit by a vehicle on Halloween than any other evening.

Halloween Driving Safety Tips

5

The following Halloween driving safety tips, is provided to you by the MassDOT Highway Safety Division, to make streets safer for pedestrians on Halloween and throughout the year.

- Slow down and be alert near neighborhoods
- Double check for pedestrians at crossings
- Make sure your headlights are on
- Be alert for pedestrians in dark costumes
- DON'T DRINK & DRIVE!

www.mass.gov/highway-safety



Thank You

