

# Safety Briefing

*September 18, 2024*








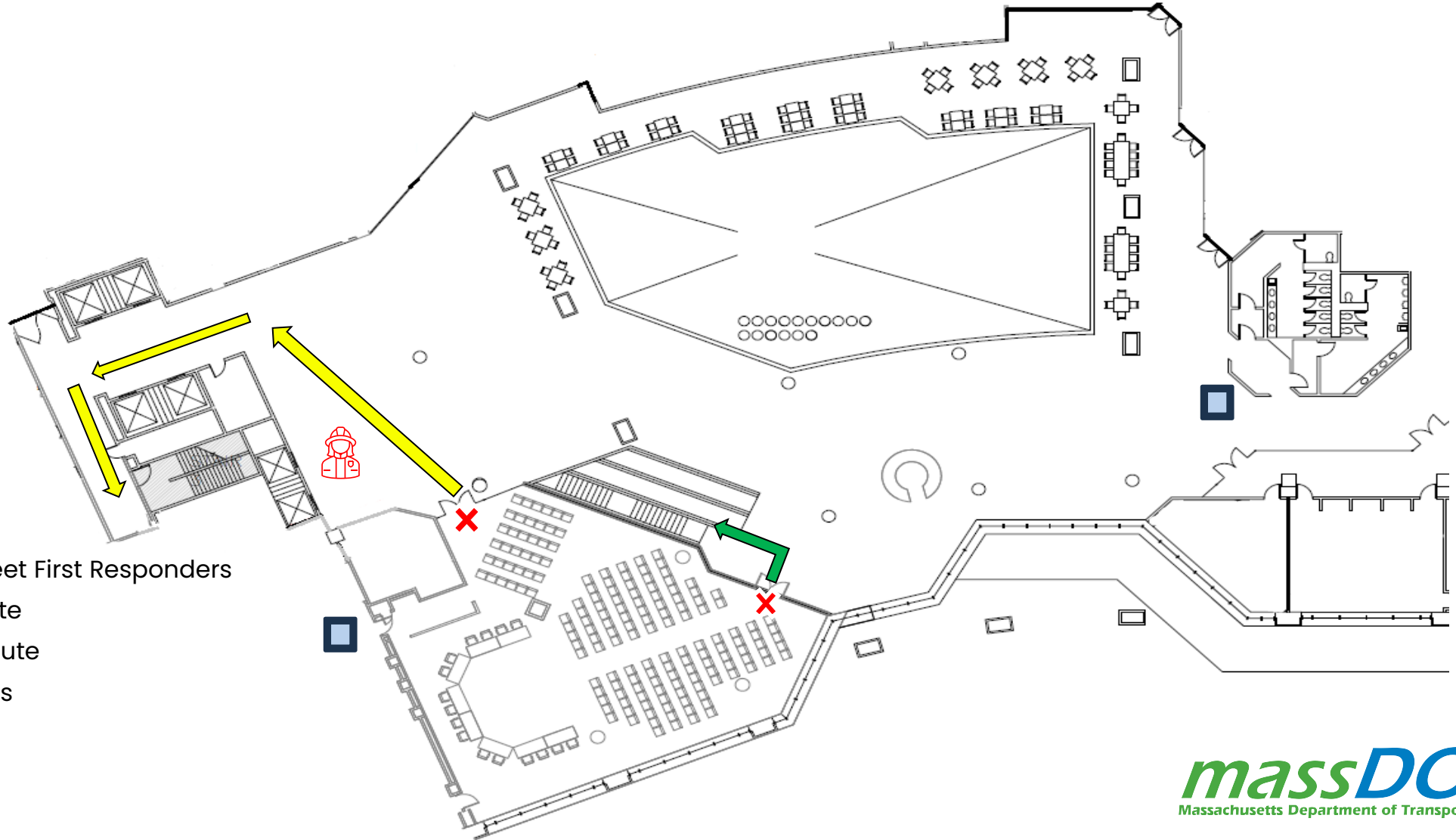
# Table of Contents

- 3 Safety Contact
- 4 See Tracks? Think Train.

# Safety Contact

## Legend

-  Rally Point to Meet First Responders
-  Primary Exit Route
-  Alternate Exit Route
-  Fire Extinguishers
-  AED



# See Tracks? Think Train.

- Always expect a train.
- Walking on or beside railroad tracks is illegal.
- The only safe place to cross tracks is at a designated location.
- Crossing tracks on a bike, with a stroller, in a wheelchair, or on other narrow wheels requires caution and extra attention.
- Never pass flashing lights or go around lowered gates.
- Wait to cross until you can see clearly in both directions.
- Stay off railroad bridges, trestles and tunnels.
- Do not attempt to hop aboard railroad equipment.

[www.oli.org](http://www.oli.org)



Thank You

