

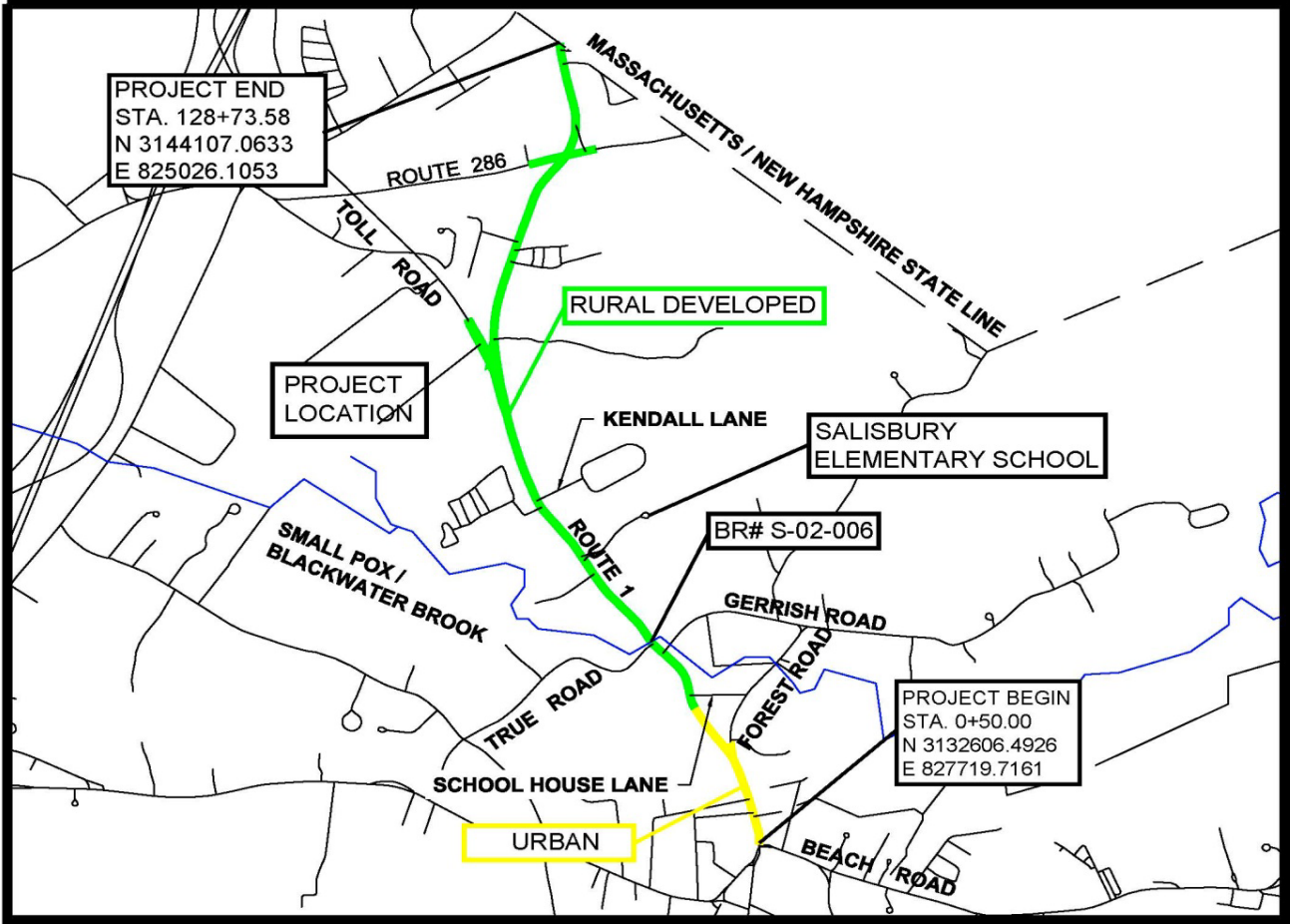
# Reconstruction of Route 1 (Lafayette Road)

# Public Informational Meeting

April 2014 7:00PM

Salisbury Town Hall

# Salisbury Project Limits



# Existing Site – Lafayette Rd





# Existing Site – Lafayette Rd





# Existing Site – Lafayette Rd



# Existing Site – Route 286



# Proposed Site Improvements



- Roundabouts at Lafayette Rd. intersections with Toll Rd. and Rt. 286
- Improved bike/ped access
- Sidewalk reconstruction
- Addition of catch basins, manholes, and detention basin

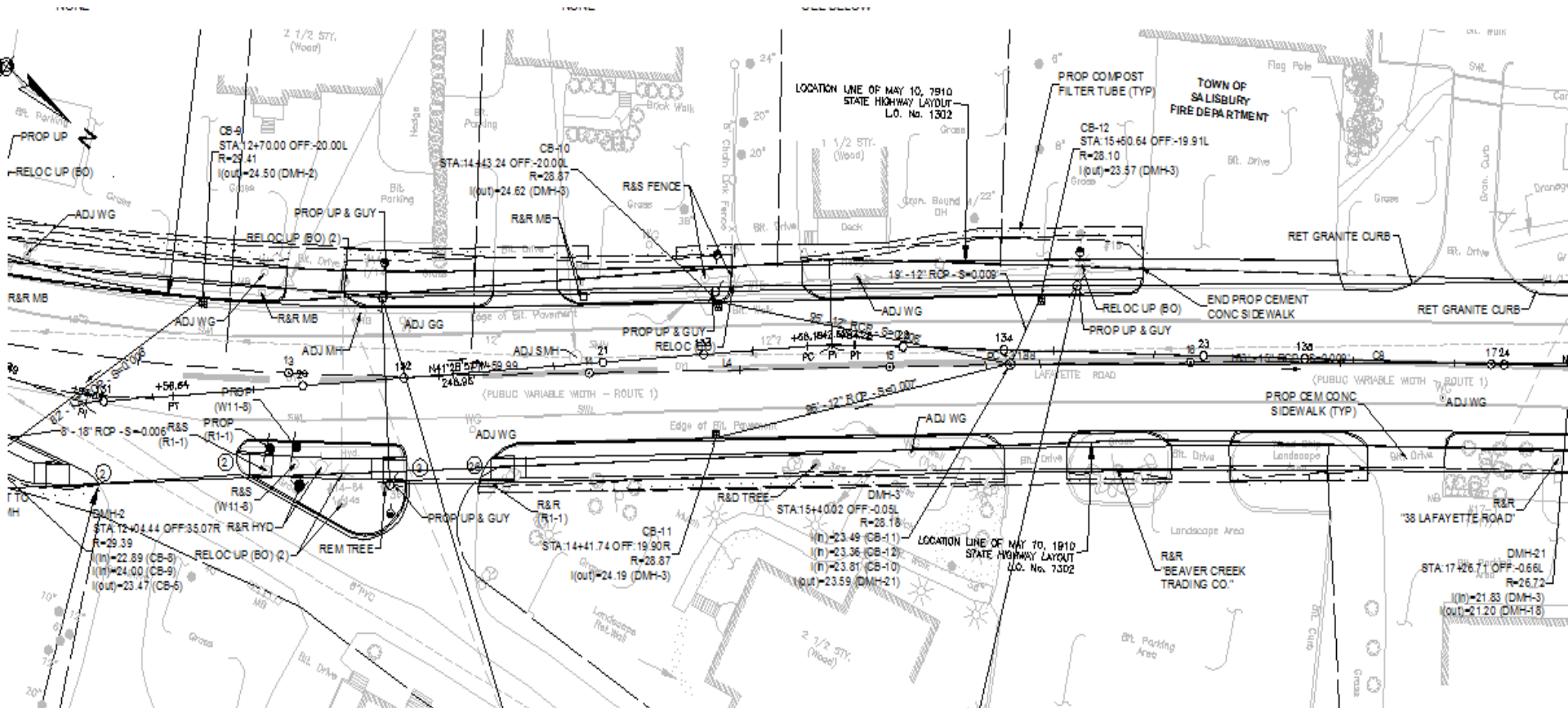
# Proposed Project Construction



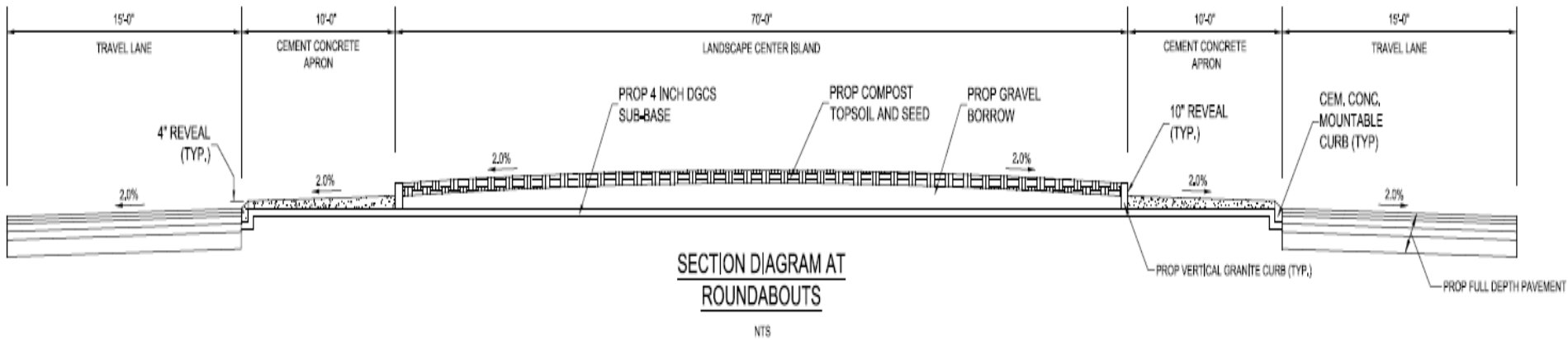
- Two 90' diameter roundabouts at intersections
  - 15' travel lane
  - 70' center island with 10' cement truck apron around
  - 10" mountable curb
- Sidewalks along both sides of Lafayette road until fire station, then only on west side
- Construction of pedestrian bridge over Smallpox Brook



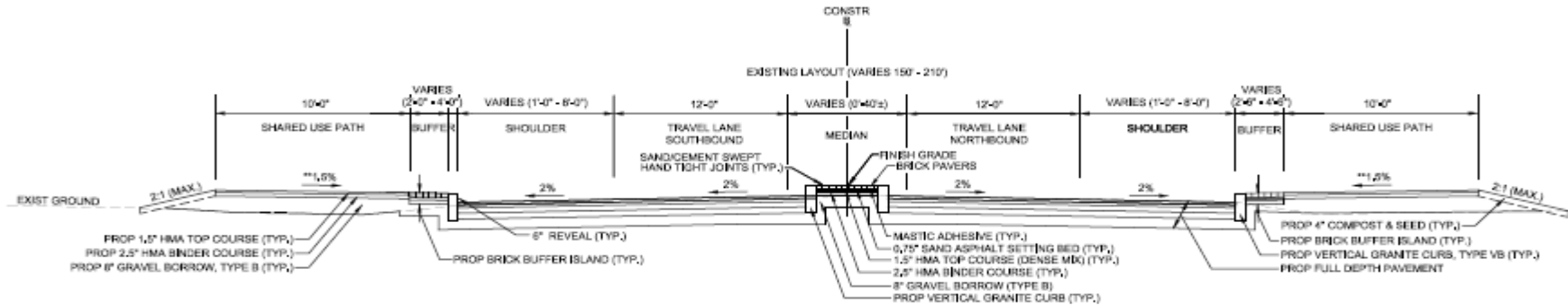
# Roundabout Construction Plans



# Roundabout Cross Section

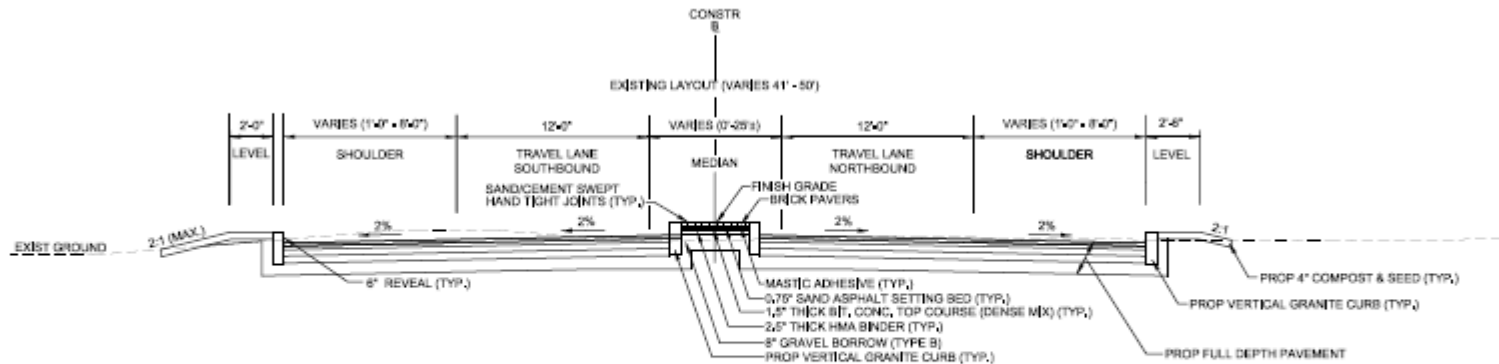


# Typical Sections



## TYPICAL SECTION ROUTE 1 & TOLL ROAD

STA 75+80e TO STA 80+20e  
 STA 81+00 TO STA 84+00  
 TOLL ROAD STA 0+82 TO STA 2+85  
 NTS  
 \*\*TOLERANCE FOR CONSTRUCTION ±0.2%



## TYPICAL SECTION RTE 286

STA 2+72e TO STA 4+17e  
 STA 5+38e TO STA 7+28e  
 NTS  
 \*\*TOLERANCE FOR CONSTRUCTION ±0.5%



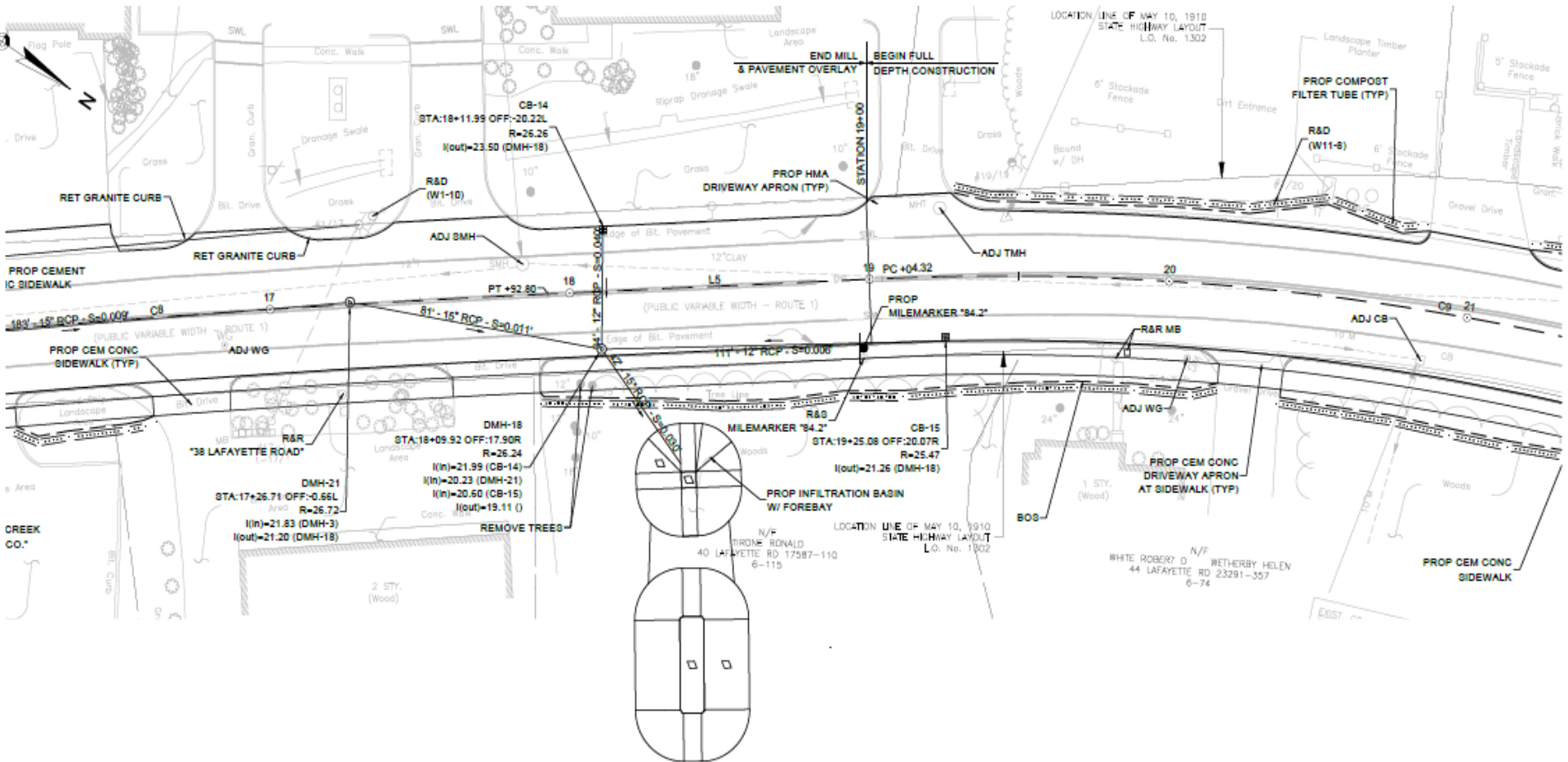
# Utility Work



- Relocation of some utility poles for construction of sidewalks
- Relocations of gas gates
- Relocations of water gates

# Stormwater System

■ Addition of catch basins, manholes, and detention basin for drainage improvements



# Environmental Documentation & Permitting



- NEPA
  - Anticipate Programmatic Categorical Exclusion determination
- Section 106 of the National Historic Preservation Act
  - Determination of effect pending archeological investigation
- Section 401 of the Clean Water Act
  - 401 Water Quality Certificate to be completed by Mass. DEP
- Category of work / location exempt processes
  - MEPA, Massachusetts Wetlands Protection Act, Chapter 91, MESA, Coast Guard



# Right of Way

- Perform Title Work
- Contact Property Owners
- Perform Appraisals
- Review & Accept Layout TPI
- Approve Acquisition
- Award Payments

# Construction Cost & Schedule



- \$4.7 Million Dollars
- Public Informational Meeting April 2014
- 10-16 Months Construction Duration
- Project pending funding approval

**Chief Engineer – Patricia Leavenworth, PE**

**MassDOT – Highway Division**

**10 Park Plaza,**

**Boston, MA 02116-3973**

**Attn: Highway Design**

**Highway Design Supervisor - Luciano Rabito, PE**

**Project Manager - Matthew Jasmin**