

# Connecting Massachusetts Students to Behavioral Health Services



## The Impact of the School Health Services Line (4590-0250)

The Department of Public Health's Bureau of Community Health and Prevention is expanding access to mental health and substance use services to students across the Commonwealth through core programs funded by the state's school health services line (4590-0250). These initiatives fund schools, school districts, and school-based health centers to hire additional behavioral health staff, build partnerships between schools and community-based providers, and train the school health workforce to respond to youth behavioral health needs. This resource highlights the programs funded on the school health line and the behavioral health services provided.

### The School Based Health Center Program

- Funds and supports School-Based Health Centers (SBHCs) to improve access to care for children and adolescents in schools and communities where access to care is low and health inequities are high.
- DPH-funded SBHCs are required to [staff](#) a full-time behavioral health clinician, a full-time medical provider and full-time community health worker (CHW), expanding access to low-barrier comprehensive health services.

### In FY23, DPH-Funded SBHCs Provided



28,005 Behavioral Health Visits



26,355 Primary Care Visits



6,265 Reproductive Health Visits

### The School Behavioral Health Workforce and Service Expansion Program

- Provides funding to school districts to hire and retain clinical and non-clinical behavioral health personnel.
- Supports partnerships between schools and community-based providers.
- Expands individual and group therapy, social emotional learning, de-escalation and crisis response, and behavioral health promotion, prevention, and early intervention.

### In FY23, SBHE-funded Schools



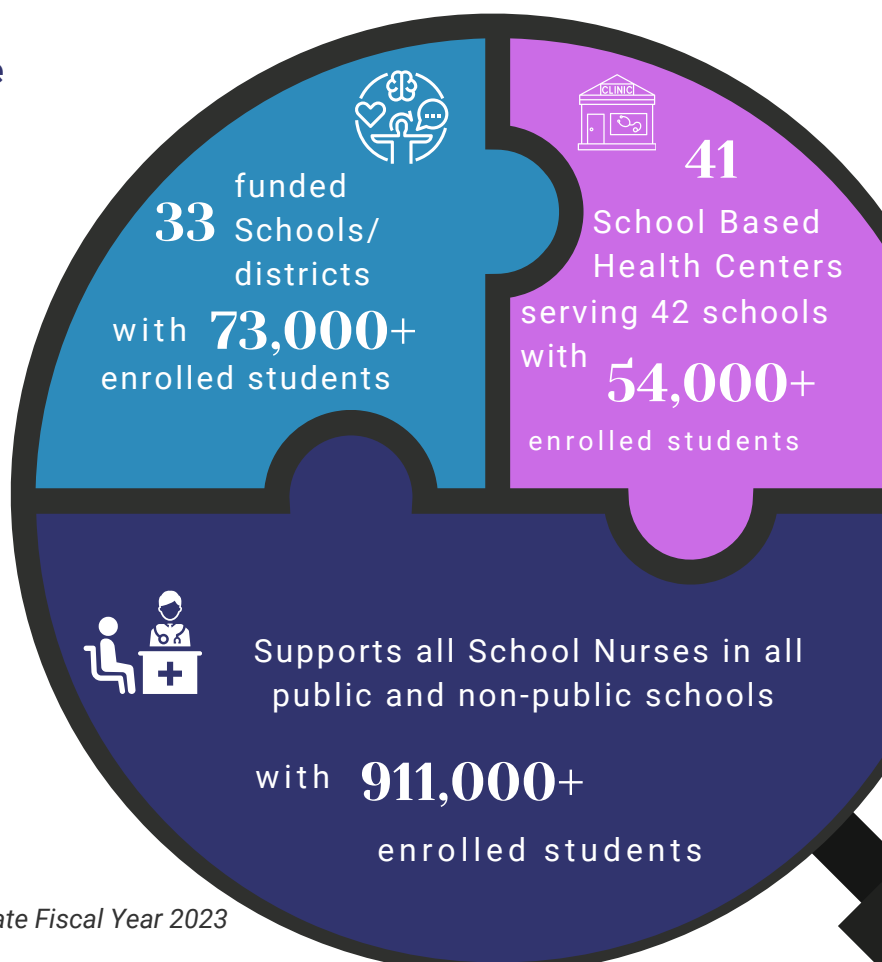
Hired 23 new behavioral health providers



Established 9 new partnerships between schools and community-based providers

### The School Health Services Program







- Supports all public and nonpublic school districts and their nurses in the state.
- Promotes a whole-child/whole-family approach through nurse-managed care.
- Oversees and support the implementation of school-based substance use screening, brief intervention, and referral to treatment
- Provides professional development to support school nurses in responding to student behavioral health needs and coordinating necessary referrals.
- Provides funding to 188 schools and districts through the Comprehensive School Health Services grant to support schools in meeting increasing student and family health needs, including social determinants of health.



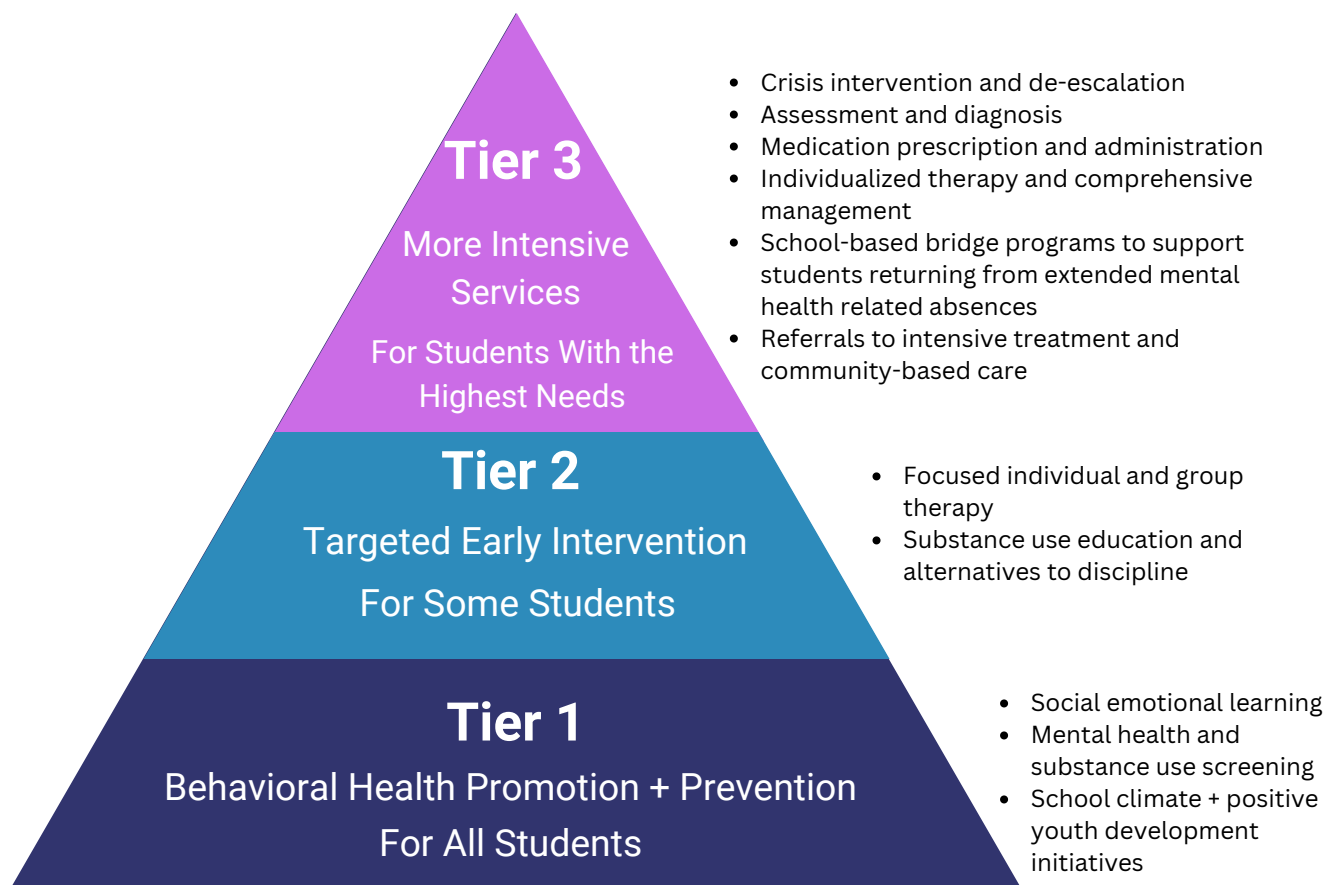


# The School Health Line:

## Advancing EOHHS Behavioral Health Priorities

-  Invests in expanding the school behavioral health workforce
-  Provides training and professional development to the existing school health workforce
-  Integrates behavioral health and primary care
-  Supports prevention and early intervention services before needs intensify
-  Supports mental health and substance use screening, including nicotine/vaping
-  Builds partnerships between schools and community health clinics and reduces barriers to care

## Supporting Multi-Tiered Systems of Support and a connection to care across the continuum



The school health services line funds multiple DPH programs, including school health services, school-based health centers, and school behavioral health workforce and service expansion. These programs fund services across all three tiers of the multi-tiered system of support framework and facilitate referrals to additional community-based services and support.