

Greenough Barn



Slate Roofing Tiles

Slate roofing tiles from the barn should be salvaged.

The slate has a commercial value and the town could generate funds from the sale of the slate.

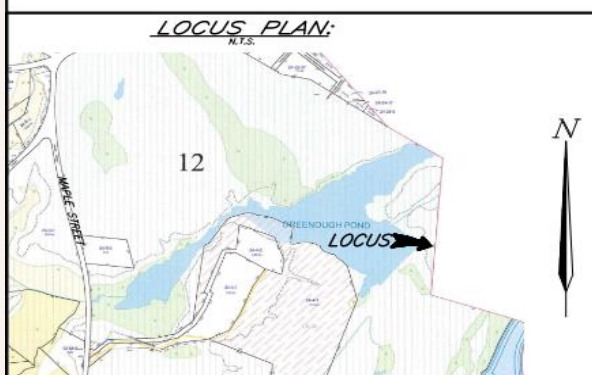
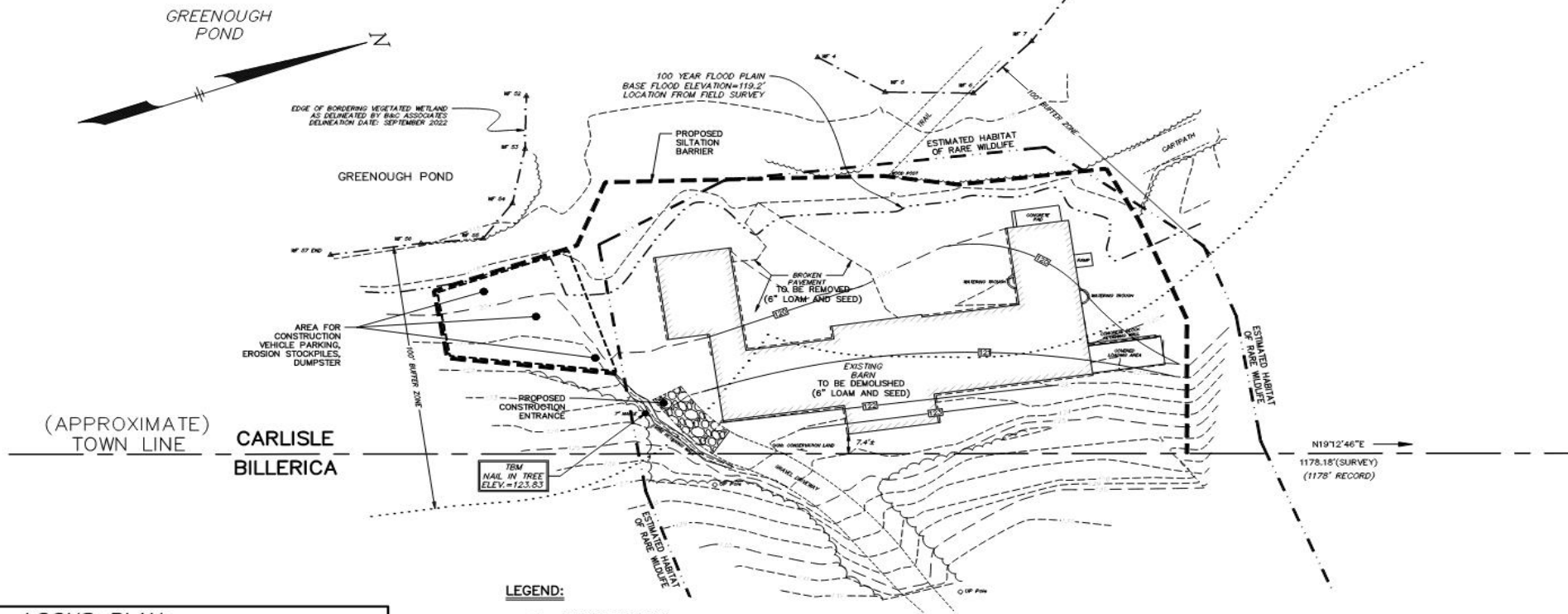
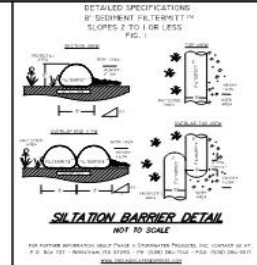
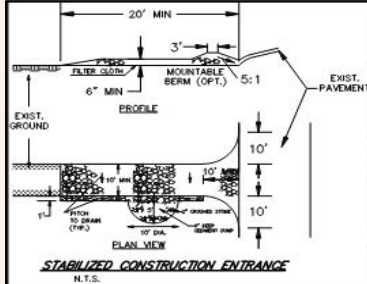









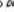




Post & Beam Barn Frame



Horse Stalls





- LEGEND:**
- | | |
|-------------------------------------------------------------------------------------|-----------------------------------|
| N/F | NOW OR FORMERLY
OVERHEAD WIRES |
|  | TREE |
|  | TREE LINE |
|  | UTILITY POLE |
| GG+ | GAS GATE |
|  | GAS SERVICE (BURIED) |
| W+ | WATER GATE |
|  | WATER SERVICE (BURIED) |
|  | DRAIN MANHOLE |
|  | SUB-SURFACE DRAIN LINE |
| --- | EXISTING CONTOUR |
| - - - | EXISTING CONTOUR |
|  | LIGHT POLE |
|  | WETLAND FLAG |
| 99X3 | SPOT ELEVATION |
|  | STONE WALL |
|  | EDGE OF PAVEMENT
TO BE REMOVED |
| TBR | |
|  | PROPOSED SPOT GRADE |
| X192.5 | EXISTING SPOT GRADE |

DATUM
N.A.V.D. OF 1988.

NOTES:

1. ALL UNDERGROUND UTILITIES SHOWN HERE WERE COMPILED ACCORDING TO AVAILABLE RECORD PLANS FROM VARIOUS UTILITY COMPANIES AND PUBLIC AGENCIES AND ARE APPROXIMATE ONLY. ACTUAL LOCATIONS MUST BE DETERMINED IN THE FIELD BEFORE DESIGNING, EXCAVATING, BLASTING, INSTALLING, BACKFILLING, GRADING, PAVEMENT RESTORATION OR REPAIRING. ALL UTILITY COMPANIES, PUBLIC AND PRIVATE, MUST BE CONTACTED INCLUDING THOSE IN CONTROL OF UTILITIES NOT SHOWN ON THIS PLAN. SEE CHAPTER 370, ACTS OF 1963 MASS. WE ASSUME NO RESPONSIBILITY FOR DAMAGES INCURRED AS A RESULT OF UTILITIES OMITTED OR INACCUATELY SHOWN. BEFORE PLANNING FUTURE CONNECTIONS THE APPROPRIATE PUBLIC UTILITY ENGINEERING DEPARTMENT MUST BE CONSULTED. DIG SAFE TELEPHONE NO. 1-888-344-7233.

2. THERE SHALL BE NO CHANGE IN GRADE IN THE 100 YEAR FLOODPLAIN.

WETLAND PERMITTING PLAN
IN
CARLISLE, MASSACHUSETTS
(MIDDLESEX COUNTY)

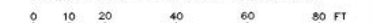
FOR: TOWN OF CARLISLE
SCALE: 1"=20' OCTOBER 31, 2022
REV: JANUARY 11, 2023 (LIMIT OF WORK)

SCALE: 1"=20' OCTOBER 31, 2022
REV: JANUARY 11, 2023 (LIMIT OF WORK)

REV: JANUARY 11, 2023 (LIMIT OF WORK)

STAMSKI AND McNARY, INC.
1000 MAIN STREET ACTON, MASSACHUSETTS
ENGINEERING - PLANNING - SURVEYING

0 10 20 40 60 80 FT



(5458 WPP.dwg) Greenough Pond SM-5458

Waste Management Plan Template

Project:

Designated Recycling Coordinator: (blank)

Waste Management Goals:

- ☐ This project must recycle or salvage for reuse [**approximately 50%**] (non-haz) by weight of the waste generated on-site.

Communication Plan:

- ☐ Waste recycling activities will be discussed at the beginning of each activity, including communication with all trucking venders, personnel, equipment operators.
- ☐ As each new subcontractor, vender comes on-site, the recycling coordinator or designated representative will present him/her with a copy of the Waste Management Plan and provide a tour of the recycling areas prior to transportation.
- ☐ The supervisor will insure all debris is separated into the appropriate waste streams for proper transportation to the appropriate recycling or waste facility.
- ☐ subcontractor and venders will be expected to make sure all their crews comply with the Waste Management Plans and coordinated daily.
- ☐ All recycling containers for metals and debris will be clearly labeled and debris piles will be neatly monitored and controlled.
- ☐ Lists of acceptable/unacceptable recyclable materials will be posted throughout the site and coordinated with operators, labor, venders, and subcontractors.
- ☐ All debris loading, trucking will be monitored moment by moment to insure compliance.

Expected Project Waste, Disposal, and Handling:

The following chart identifies waste materials generated on this project, their disposal method, and handling procedures. **Please be advised, these calculations are for informational purposes and are subject to change.**

Recycling chart

Material	Quantity	Disposal Method	Handling Procedure

- The above chart showing 50 % recycling must be met with this contract
- All documentation must be provided upon completion.

Completed Waste Management Plan

Project: Greenough Barn

Designated Recycling Coordinator: Town of Carlisle

Waste Management Goals:

- ☐ This project must recycle or salvage for reuse [**approximately 50%**] (non-haz) by weight of the waste generated on-site.

Communication Plan:

- ☐ Waste recycling activities will be discussed at the beginning of each activity, including communication with all trucking venders, personnel, equipment operators.
- ☐ As each new subcontractor, vender comes on-site, the recycling coordinator or designated representative will present him/her with a copy of the Waste Management Plan and provide a tour of the recycling areas prior to transportation.
- ☐ The supervisor will insure all debris is separated into the appropriate waste streams for proper transportation to the appropriate recycling or waste facility.
- ☐ subcontractor and venders will be expected to make sure all their crews comply with the Waste Management Plans and coordinated daily.
- ☐ All recycling containers for metals and debris will be clearly labeled and debris piles will be neatly monitored and controlled.
- ☐ Lists of acceptable/unacceptable recyclable materials will be posted throughout the site and coordinated with operators, labor, venders, and subcontractors.
- ☐ All debris loading, trucking will be monitored moment by moment to insure compliance.

Expected Project Waste, Disposal, and Handling:

The following chart identifies waste materials generated on this project, their disposal method, and handling procedures. **Please be advised, these calculations are for informational purposes and are subject to change.**

Completed Waste Management Plan Cont.

Recycling chart

Material	Quantity	Disposal Method	Handling Procedure
Concrete, Masonry, CMU	150 tons	Will be recycled as needed by end user for reuse on site or road base	Reuse as processed material – on or off site
Post & Beam Structure	7 tons	Will be dismantled <u>and</u> <u>reassembled</u> by others	Building to be carefully dissemble in orderly fashion, then stacked on trailer for <u>shipping</u> .
Ferrous and non- ferrous metals	1 Tons	Transferred to a recycler	Will be separated and placed into dumpsters clearly marked for metal, recycling. I.e. iron, #1, #2 HTH, various soft metals.
Non-recyclable Materials	175 tons	Comingled / <u>landfill</u>	Dispose in "C&D" dumpsters
Slate roof	13 tons	Salvaged and re used	Carefully remove and stacked in bins, to be shipped off site

- The above chart showing 50 % recycling must be met with this contract
- All documentation must be provided upon completion.

Estimated Barn Weight

-Wood/structure above concrete 348,000 lbs / 487 cubic yards
- Concrete – slabs, foundation walls, footings / 340,000 lbs / 148 cubic yards
Overall total – 688,000 lbs / 635 cubic yards

Diversion

Concrete – approx. 45% by weight
Post & beam structure approx. 1% by weight
Ferrous & non ferrous metals 2,000 lbs approx. 1% by volume
Slate roof approx. 26,000 lbs 1% by weight

In most cases on modern structures, we attempt to achieve a recycling rate of 90%
And in most cases, they will require a minimum of 75%

But due to the age and build out of this structure (mostly painted wood, plaster and the fact there is no structural steel- which carries a lot of weight when you're looking for higher diversion rates), the real recycling is in the concrete and salvage.

Estimated value of recycled materials

Post & Beam structure after being dismantle \$15,000.00
Slate- after being removed - \$5,000.00
Concrete- if crushed can produce net \$3.00 per ton