

Sensing Spring

Exploring in and around Mount Greylock State Reservation

TRIP-TIP SELF-GUIDED ADVENTURE

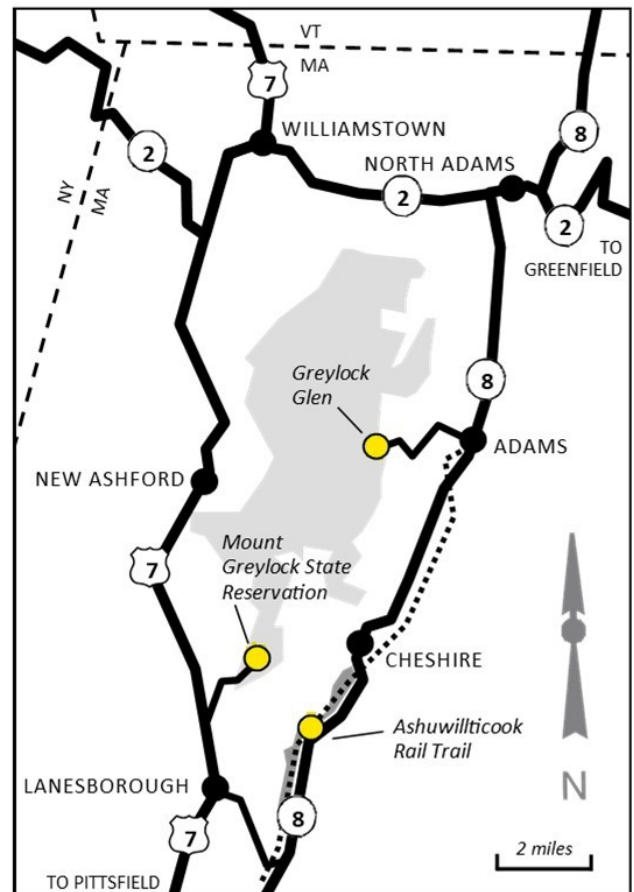


Welcome

Springtime is in the air! Warm breezes and the sweet scents of spring awaken our senses, enticing us to get out and explore nature's long awaited revival. Spring is a great time to explore the outdoors at these Massachusetts Department of Conservation and Recreation (DCR) state parks in the northern Berkshires. This Sensing Spring Trip-Tip leads you to:

- **Bradley Farm Interpretive Trail at Mount Greylock State Reservation** in Lanesborough;
- **Ashuwillticook Rail Trail** in Cheshire, and Adams; and
- **Glen Meadow Loop at Greylock Glen** in Adams.

Choose one park, two parks, or make it a multi-day adventure. Visit them in any order - you decide. Challenge yourself to visit all the parks with your family during April Vacation Week, or anytime this spring. We hope you enjoy this Trip Tip tour.



Share Your Adventure!

Share your Trip-Tip adventure with others through word of mouth, or on social media with hashtags **#massdcr** and **#dcrtripitip**.

Things To Know, Before You Go

- **Spring trails may be wet, muddy or icy.** Traction devices on your boots and/or hiking poles can make your adventure more enjoyable.
- **Please clean up after you pet** and keep them on a leash at all times.
- **Remember to carry-in, carry-out** all your belongings, including trash. **Leave no trace of your visit**, and leave all that you find in its natural condition for all to enjoy. Thank you!

Begin your **Sensing Spring Trip-Tip** at:

Mount Greylock State Reservation

Visitor Center, 30 Rockwell Road, Lanesborough, MA 01237

Info: (413) 499-4262

Park Hours: dawn to dusk. FREE.

Visitor Center Open: 9:00am - 4:00pm

The **Mount Greylock Visitor Center** is located 1.5 miles from the intersection of Route 7 and North Main Street. Follow the brown lead-in signs up the hill. No food or water is available on-site but picnicking is permitted.

Although the roads to the summit open in late-May, the Visitor Center still offers a great panoramic view. Indoor restrooms are open 9am - 4pm daily, or call ahead for updates.

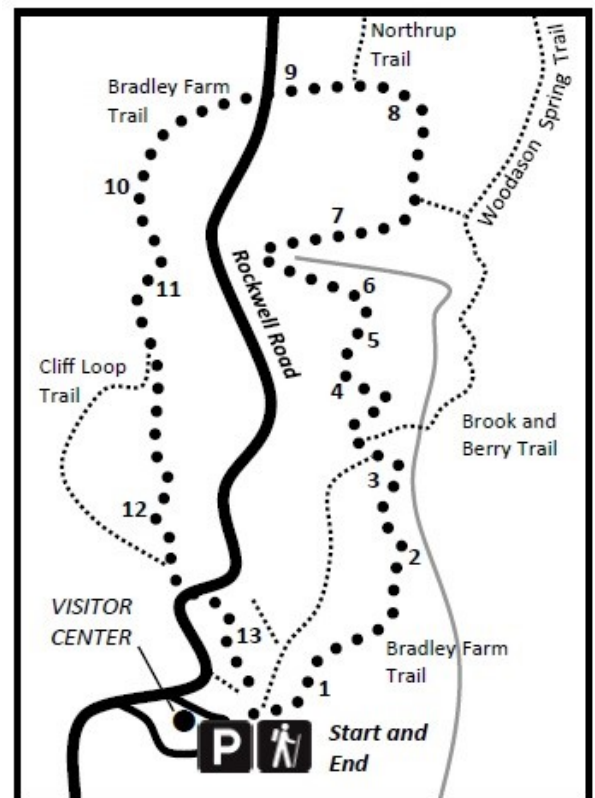


Bradley Farm Interpretive Trail: Begins and ends at the kiosk, northeast corner of the Visitor Center parking lot. This **2-mile, 90-minute, easy hike** passes through northern hardwood forest. Follow the **blue trail blazes**. **Pick up a trail guide** to the Bradley Farm Interpretive Trail at the Visitor Center, or **download a copy:** <https://www.mass.gov/doc/bradley-farm-trail-mount-greylock-state-reservation/download>

Listen carefully: Can you hear songbirds in the trees, a babbling brook, or the rustling of forest critters waking from their winter slumber?

Family Activity: Take turns reading stories about Farmer Bradley, his apple orchards, and the surrounding lands and animals, at each of the Interpretive stops along the way! Can you find all 13? **Take a selfie at your favorite station!**

For more **Mount Greylock State Reservation** information visit: <https://www.mass.gov/locations/mount-greylock-state-reservation>



Continue your **Sensing Spring Trip-Tip** at:

Ashuwillticook Rail Trail (pronounced *Ash-u-will-ti-cook*)

Along MA Route 8 in Lanesborough, Cheshire and Adams, MA.

Info: (413) 499-7003

Park Hours: dawn to dusk. FREE.

This **14-mile-long park** was once a railroad line between Pittsfield and North Adams. You can now walk, run, bike or blade on this 10-foot wide, gentle-grade, universal-designed path. Explore the whole 28-mile round-trip, or just a portion. Enjoy fantastic views of the Hoosic River Valley and surrounding hills. The trail passes by Cheshire Reservoir with sweeping views of Mount Greylock, through a wetland with great bird watching, and along the rushing Hoosic River. Stop in Adams for lunch, or bring a picnic. Picnic tables are available along the Cheshire Reservoir and at Farnam's Crossing. Dress in warm layers.

Parking areas are located just off Route 8 at:

- In Lanesborough at Berkshire Mall Road
- In Cheshire at Farnam's Crossing, or Church Street
- In Adams at Harmony Street, or town parking lot off Hoosac Street
- In Pittsfield on Crane Avenue.

Universally accessible restrooms, located at the trail parking areas off Berkshire Mall Road and Farnam's Road. Restrooms are open seasonally during daylight hours.



Family Fun Activity: Spring has so many sights and sounds, textures and fresh scents blossoming all around you! Use your senses to take in all of nature's beauty waking up from a long winter nap.

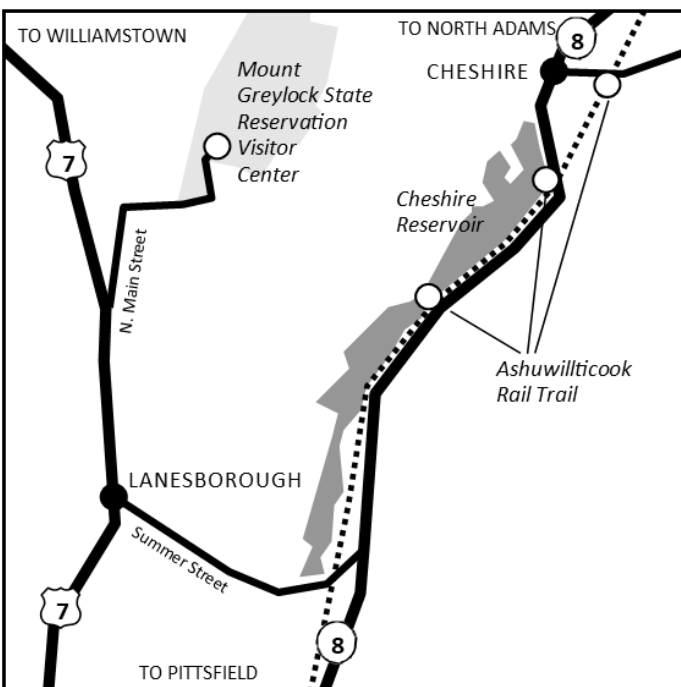
TURN TO PAGE 5 for the **Five Senses Nature Scavenger Hunt**. Discover these through your senses of **SIGHT**, **SOUND** (hearing), **TOUCH** and **SMELL**. The fifth sense is **TASTE**, although it is best not to put anything you find in your mouth - except your lunch! Ask an adult if you have questions.

For more information on the **Ashuwillticook Rail Trail** visit:

<https://www.mass.gov/locations/ashuwillticook-rail-trail>

For a **printable brochure and map** visit:

<https://www.mass.gov/doc/ashuwillticook-rail-trail-map/download>



Driving distance and time between Mount Greylock Visitor Center and Ashuwillticook Rail Trail at Farnam's Road is **7.4 miles, 18 minutes**.

Conclude your **Sensing Spring Trip-Tip** at:

Greylock Glen

Gould Road, Adams, MA 01220

Info: (413) 499-4262

Park Hours: dawn to dusk. FREE.

Nestled below Mount Greylock summit is Greylock Glen. Trails here encompasses 1,063 acres of woodlands, open fields, wetlands, mountains streams, ponds and even a waterfall, or two! On a clear day, look up and see the War Memorial Tower on Mount Greylock summit.

Along the right-hand side of Gould Road are three separate parking areas: First, trail access to the Glen Meadow Loop; Second, Peck's Falls trail; and third Greylock Glen Gazebo.

For an **interactive map** of the Greylock Glen trail system visit: <http://greylockglenresort.com/the-site/greylock-glen-trails>



Glen Meadow Loop: An easy, 1.5 mile, mostly flat, gravel covered 10-foot-wide loop meanders through rolling open fields and wooded hillside with several ponds. The trail is pet friendly (remember, keep pets on leash and dispose of pet-waste off-site). There's also a gazebo for a picnic.



For the more adventurous, there is a trail to nearby **Peck's Falls**. This **0.07 mile trail** is **short, but steep**. The trailhead is across from the second parking area on Gould Road.

Family Fun Activity: For a FUN **Pond Life Seek and Find** game, **TURN TO PAGE 6!**

For more info on **Greylock Glen** visit: <http://greylockglenresort.com>

We hope you enjoyed this **Sensing Spring Trip-Tip** seasonal snippet of the Massachusetts State Parks in the northern Berkshires. Please come visit us again.

MOUNT GREYLOCK STATE RESERVATION
Department of Conservation & Recreation
P.O. Box 138, Lanesborough, MA 01237
(413) 499-4262
www.mass.gov/dcr



Updated 3/2022

ASHUWILLTICOOK RAIL TRAIL FAMILY FUN ACTIVITY

Directions: CHECK OFF each item on your list as you FIND IT!
Please leave all that you find in its natural environment for all to enjoy!

FIVE SENSES NATURE SCAVENGER HUNT

SIGHT

- Beaver activity (chewed bark, a beaver lodge or a beaver dam)
- Geese flying overhead
- Whistle Post (features along the trail that once reminded railroad engineers to blow their whistle when approaching an intersection)

What letter is on the post? _____

Write the letter here: _____

SOUND

- A bicycle bell
- Ducks quacking
- An early spring bird's song that sounds like "conk-la-ree!"

Write the bird's name below:

_____ - _____
L _____

TOUCH

- FIND something smooth
- FIND something wet
- Can you FIND a spring plant with soft furry buds on its stems?

Write the plant's name below:

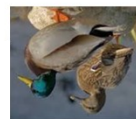
_____ - _____
L L _____

SMELL

- A flower with a scent
- A smell that you like

TASTE (DON'T EAT IT yourself!)

- FIND something a bird would like to eat that starts with the letter you wrote in the SIGHT box



HINTS:

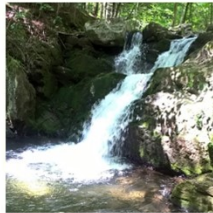
GREYLOCK GLEN FAMILY FUN ACTIVITY

Directions: Try to find as many of the items below as you explore the Greylock Glen.
Just CHECK OFF each item on the list when you SEE IT!
Please leave all that you find in its natural environment for all to enjoy!
Feel free to add your own items at the end of the list. Have fun on your quest!

POND LIFE ~ SEEK and FIND SCAVENGER HUNT



turtle



waterfall



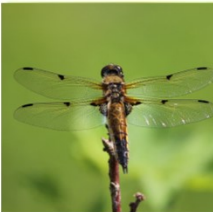
salamander



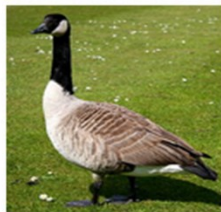
blackbird



cattails



dragonfly



geese



feather



frog



fish



snake



summit



butterfly



flowers



ducks



bee
