



Climate-Oriented Forest Management Guidelines – Public Input Session

Commonwealth of Massachusetts
Executive Office of Energy and Environmental Affairs

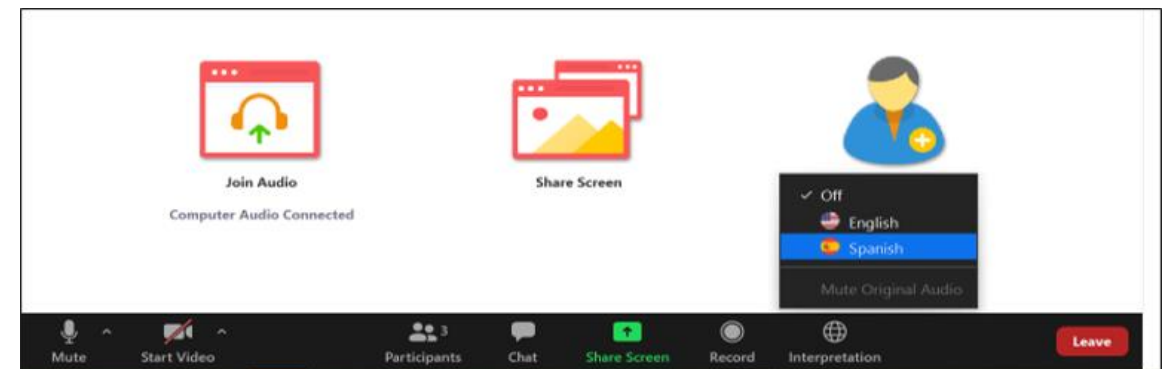
September 12, 2023

Translation Services

- We are providing Spanish translation services for this session
 - All attendees must select a language channel, even if viewing the presentation in English
 - The Spanish-translated recording will be posted to the Forests as Climate Solutions [website](#)
- Please speak slowly
- If you would like a version of the slides or today's presentation translated to another language, please email guidelines@mass.gov
- Please provide oral and written comments in your preferred language, and we will ensure translation occurs upon conclusion of this session

To participate in English, click the “Interpretation” icon and select English

Si alguien desea interpretación en español, haga clic en “Interpretation” y seleccione “Spanish”



Please Note: We are using the Zoom webinar platform, which has certain technology limitations to be discussed during “logistics.” Please use “Q&A” function to submit logistical or clarifying questions.



Welcome and Introductions



Agenda

- *Translation Services*
- *Welcome and Introductions*

- **Forests as Climate Solutions: Introduction & Background**

- **Public Input Session Overview**
 - Logistics
 - Review of Framing Questions
 - Public Input

- **Conclusion**



Introduction: Perspective

- The state seeks to protect and manage forests in a way that achieves resilience to projected disturbances from climate change and ensures stable carbon sequestration and storage for climate change mitigation.
- We seek to understand the latest thinking and science around carbon and climate change mitigation, which is a primary determinant driving decision-making for state lands management, balanced with other important priorities such as habitat preservation, biodiversity, and water quality, each of which is also affected by climate change.
- Strategic application of the climate-oriented management guidelines will be important. Given the complexity, diversity and dynamic nature of our forests and their conditions, there is no single set of policies or actions that would be prudent to apply wholesale across state lands. Rather, we will set goals, prioritize ecosystem services and values we are managing for, including biodiversity, and develop standard operating procedures, management plans, and the like to advance them.



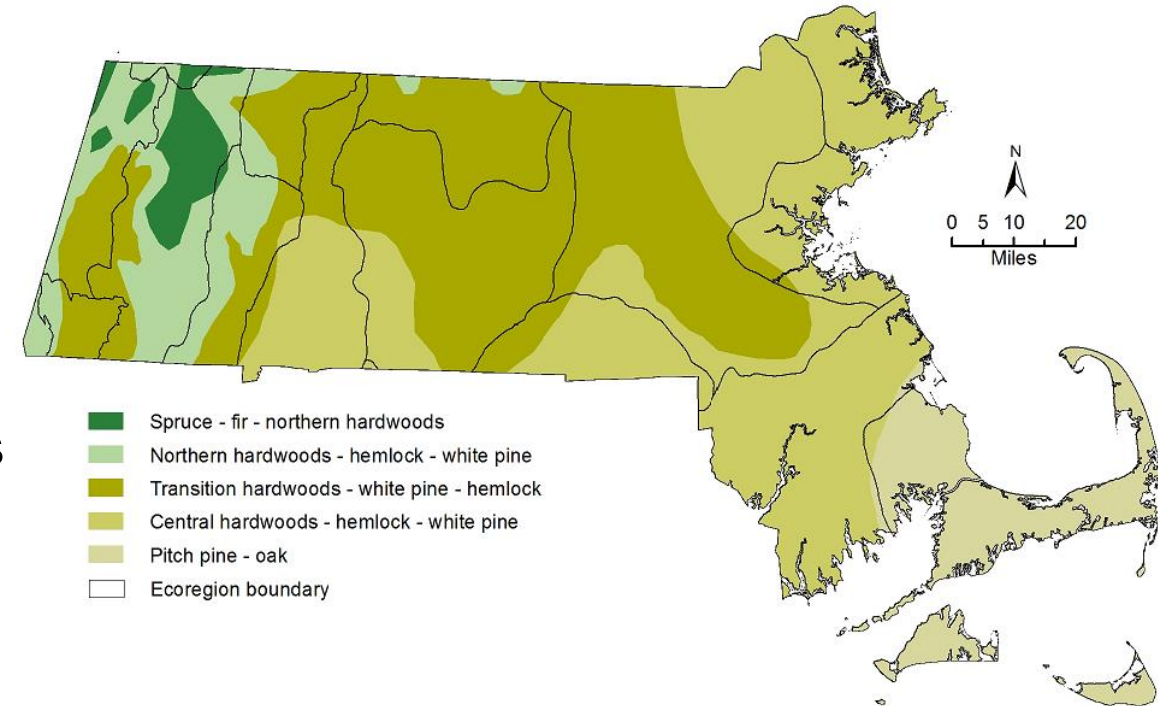
Introduction: Rationale and Brief Summary

EEA has convened the Climate Forestry Committee to seek scientific and expert guidance and recommendations to help the state ensure its forestry land management decisions are prioritizing climate mitigation and resilience, informed by the latest science.

- The Committee is charged with developing and enhancing a set of recommended climate-oriented management guidelines to be implemented through incorporation into land management plans and forestry approaches for DFW and DCR state park and water supply lands, as well as advanced through incentive programs for forestry on land held by others.

Context: Massachusetts Forests

- **Acres in MA: 5,175,349**
- **Acres Forested: 2,984,347 or 57%**
 - Acres Privately Owned: 1,911,815
 - Acres Publicly Owned: 1,072,532
 - Acres State Owned: 525,377
 - Dept. of Conservation & Recreation State Parks Division; 280,196 acres
 - Dept. of Conservation & Recreation Water Supply Protection Division (MWRA System); 96,751 acres
 - Dept. of Fish & Game – Division of Fisheries & Wildlife; 143,294 acres
 - 5,136 acres jointly held by DCR and DFW
 - About 1,450 acres, or <1% of state forests, are harvested per year





Forests as Climate Solutions – “Branch” #1

Issue Climate-Oriented Forest Management Guidelines

To ensure future land management decisions fully account for climate mitigation & resilience:

- New climate-oriented guidelines are being developed and will be used for all state forest management projects;
- Active forest management has been paused for six months; and
- Forestry project review will resume in December, allowing a reasonable but fixed period for guideline development





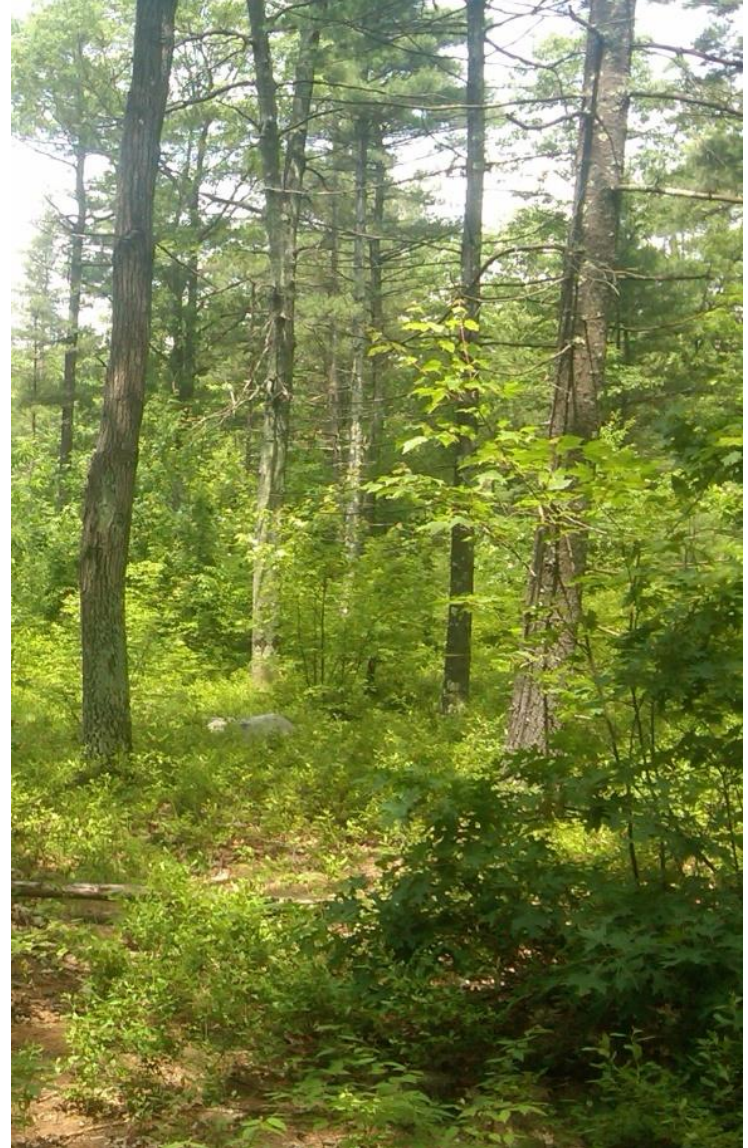
Forests as Climate Solutions – “Branch” #2

Conservation: Reduce Forest Land Conversion & Increase Permanent Forest Land Conservation

Strategically conserve additional forest land to permanently preclude conversion to other uses and improve land use to minimize forest loss.

Expand Forest Reserves

Pursue new focus on and investment in public and private forest reserves. These are areas where no active forest management is intended & nature largely takes its course; for carbon sequestration and storage, habitat, & other benefits.





Forests as Climate Solutions – “Branch” #3

Incentives: Support Forest Landowners, Businesses, & Rural Communities

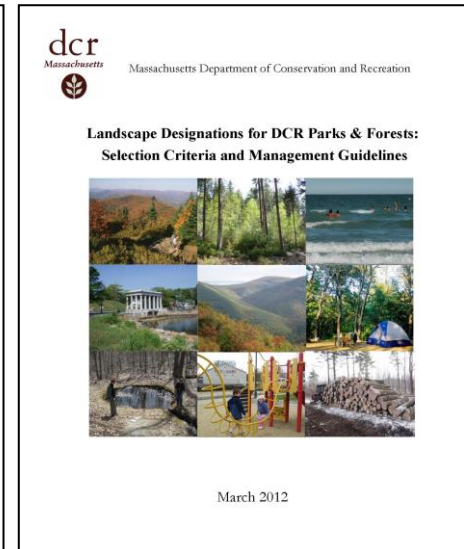
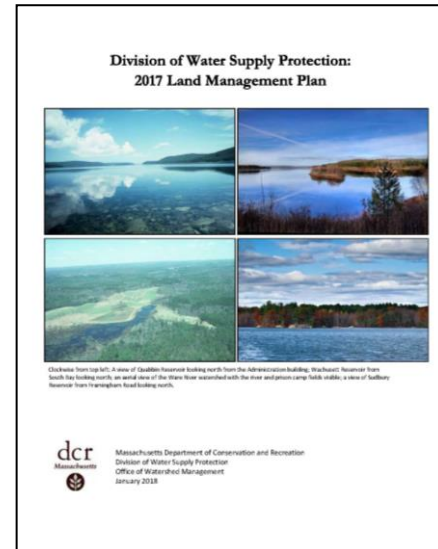
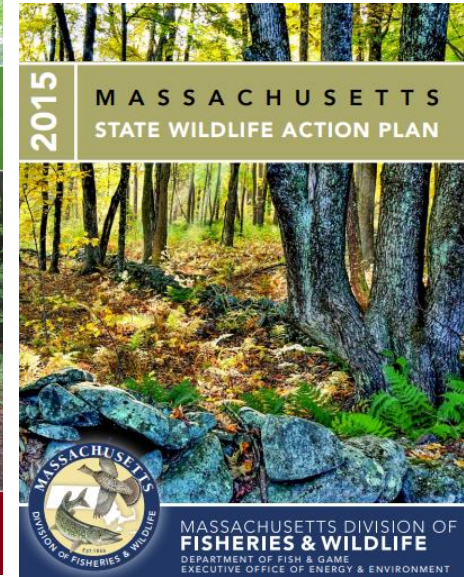
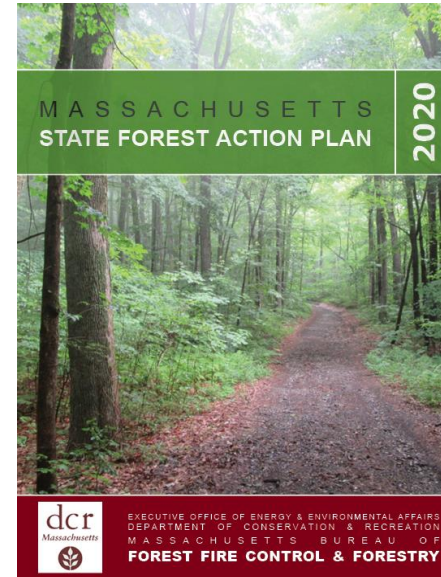
Expand incentives and programs to protect private and municipally-owned forests, encourage landowners to manage them using climate-oriented forestry techniques, and help forestry businesses improve their technology and business practices.



Forests as Climate Solutions – “Branch” #4

Data: Integrate & Make Public Best Science, Research, & Management Practices

Acquire more field data, systematically integrate research into conservation & management practices, & make information public.





Public Input - Logistics

Zoom Logistics

- We are using the Zoom webinar platform, which has certain limitations
- Please use Q&A function for logistical or clarifying questions

Oral Comments

- If an attendee wishes to speak, attendee must sign up via the form that was distributed via the webpage and event notice
 - Link was provided in your Zoom registration confirmation email, and can be found on the webpage or in the chat
- List of registrants will be posted in the chat and called upon in sign-up order
- When it is time for registrant to speak, we will read aloud the registrant's name, and enable the registrant to unmute, at which point the registrant may begin speaking
- Speaking time is limited to three minutes, which will be visible via the on-screen timer

Other

- Written comments can be shared via the form on EEA's Forests as Climate Solutions [webpage](#); submission of written comment related to this session by Friday, September 15 at 5pm will facilitate consideration
- Draft guidelines will be available for review & comment prior to the next input session
- Please sign up for receipt of materials or notice of future public input sessions on the Forests as Climate Solutions webpage
- If you have any additional comments or questions not related to this public listening session, or wish to share any attachments, submit them to guidelines@mass.gov



Framing Questions

1. What role should humans play in optimizing carbon storage and sequestration in forests? To advance other objectives such as clean water, habitat for rare species, or wood products?
2. What is your definition or concept of forest reserves? What, if any, is the role of human intervention in maintaining reserve conditions?
3. According to the [Massachusetts Climate Change Assessment \(2022\)](#) *degraded forest health is expected due to warming temperatures, changing precipitation, increasing pest occurrence, and more frequent and intense storms*. What types of forest vulnerability do you think require effort to preserve, protect, fortify and/or enhance our state forest lands? What management practices or approaches do you suggest to make the forests of Massachusetts more resilient to the conditions projected by the Climate Change Assessment?



Thank You

Please visit the [Forests as Climate Solutions](https://www.mass.gov/info-details/forests-as-climate-solutions) webpage for background and for updates:
<https://www.mass.gov/info-details/forests-as-climate-solutions>

- Written comments can be shared via the form on the webpage. Submission of written comment related to this session by **Friday, September 15 at 5pm** will facilitate consideration
- Draft guidelines will be available for review & comment prior to the next input session
- If you wish to receive future email updates related to this initiative, please sign up on the webpage
- If you have any additional comments or questions not related to this public listening session, or wish to share any attachments, submit them to guidelines@mass.gov