

**SEPTEMBER 1999**  
**MASSACHUSETTS DEPARTMENT OF REVENUE**  
**FINAL MONTHLY REVENUES**  
**(\$000)**

<b>SEPTEMBER</b>	<b>FY99</b>	<b>FY00</b>	<b>Change FY99 - FY00 AMOUNT</b>	<b>PERCENT</b>	
<b>Total for Budget *</b>	\$1,520,287	\$1,525,775	\$5,488	0.4	%
<b>Net Income</b>	787,883	786,306	(1,578)	(0.2)	
<b>Withholding</b>	506,260	536,625	30,365	6.0	
<b>Total Sales &amp; Use</b>	245,880	276,549	30,668	12.5	
<b>Regular Sales</b>	164,983	188,566	23,584	14.3	
<b>Net Corporate</b>	186,047	224,093	38,045	20.4	
<b>Business Excise</b>					
<b>Banks, Insurance, Public Utilities</b>	165,938	104,062	(61,876)	(37.3)	
<b>Other Excises**</b>	134,538	134,766	228	0.2	

<b>YEAR-TO-DATE (JULY - SEPTEMBER)</b>	<b>FY99</b>	<b>FY00</b>	<b>Change FY99 - FY00 AMOUNT</b>	<b>PERCENT</b>	<b>BENCHMARK YEAR-TO-DATE RANGE (In Millions)</b>
<b>Total for Budget *</b>	\$3,440,534	\$3,490,025	\$49,491	1.4	% 3,315 - 3,532
<b>Net Income</b>	1,858,109	1,907,558	49,449	2.7	
<b>Withholding</b>	1,570,601	1,659,710	89,109	5.7	
<b>Total Sales &amp; Use</b>	803,912	866,955	63,043	7.8	
<b>Regular Sales</b>	560,792	607,070	46,279	8.3	
<b>Net Corporate</b>	238,468	245,062	6,595	2.8	
<b>Business Excise</b>					
<b>Banks, Insurance, Public Utilities</b>	172,817	119,649	(53,168)	(30.8)	
<b>Other Excises**</b>	367,228	371,144	3,917	1.1	

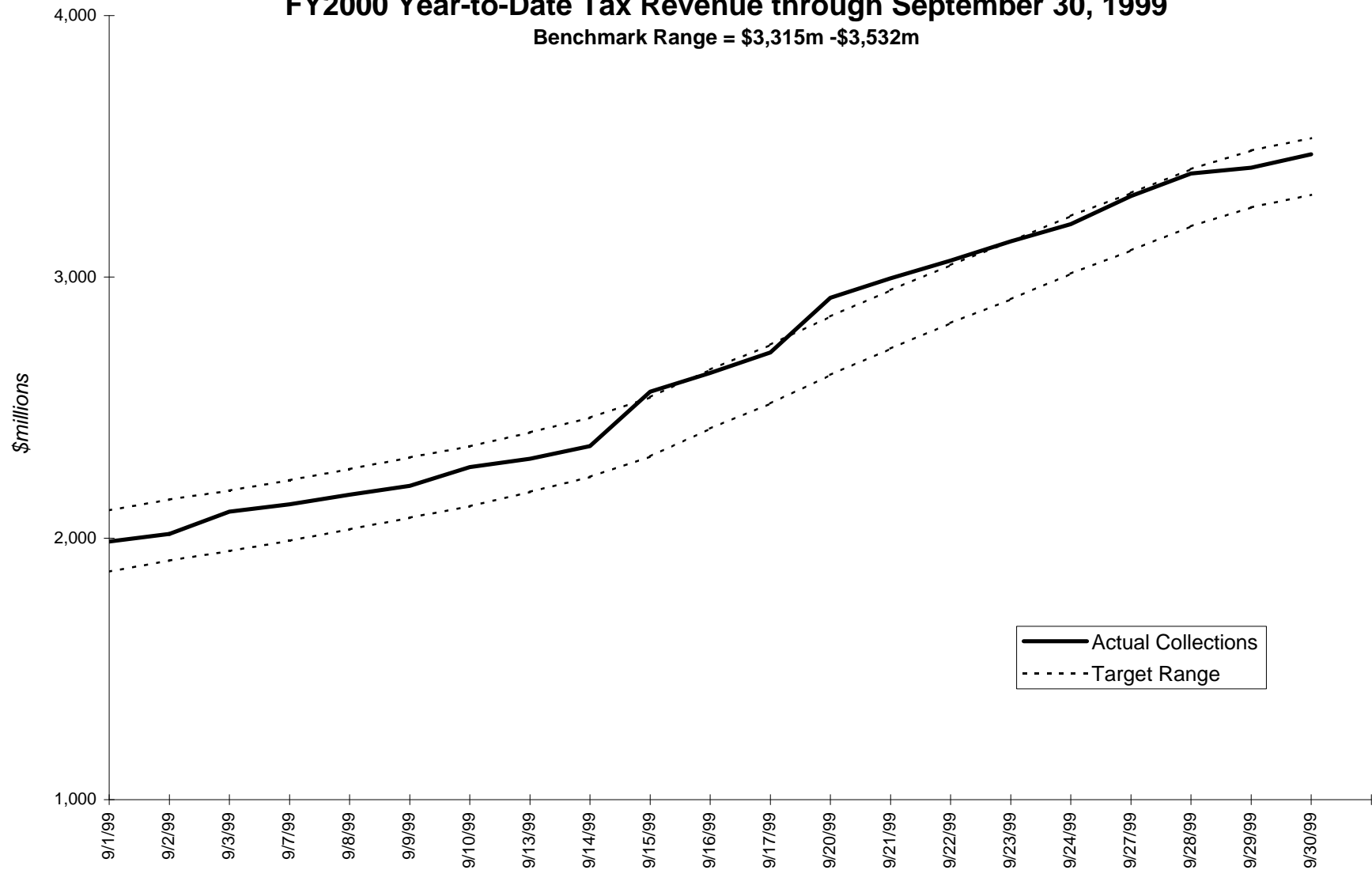
\* Detail may not add to Total for Budget due to rounding.

\*\* Other Excises includes tax revenue collected by other agencies.

Note: The 'White Sheet' for September, containing DOR's final revenue figures, is published after the eighth working day of October.

## FY2000 Year-to-Date Tax Revenue through September 30, 1999

Benchmark Range = \$3,315m - \$3,532m



Target range is based on Administration and Finance FY2000 annual estimate of 14,850 million.