

# Expedited Psychiatric Inpatient Admission Dashboard – September 2019<sup>1</sup>

Expedited Psychiatric Inpatient Admission Dashboard	September 2019				August 2019		Variance (August vs. Sept.)		Percent Change (August vs. Sept.)		YTD		
	Referrals	Time to Placement (Days) <sup>2</sup>		Referrals	ATP <sup>3</sup>	Referrals	ATP <sup>3</sup>	Referrals	ATP <sup>3</sup>	Referrals	ATP <sup>3</sup>		
		Average	Max										
SUMMARY	79	2.37	17	52	1.77	27	0.60	52%	34%	629	1.91		
Age Groups													
0-12	16	20%	2.50	10	6	12%	1.67	10	0.83	167%	50%	200	2.08
13-17	9	11%	2.78	7	1	2%	17.00	8	-14.22	800%	-84%	101	2.06
Subtotal: 0-17	25	32%	2.60	10	7	13%	3.86	18	-1.26	257%	33%	301	2.07
18-22	3	4%	1.33	2	5	10%	2.80	-2	-1.47	-40%	-53%	38	2.50
23-64	36	46%	2.75	17	31	60%	1.35	5	1.40	16%	104%	228	1.79
65+	15	19%	1.27	3	9	17%	1.00	6	0.27	67%	27%	62	1.21
Insurance Coverage													
Commercial	7	9%	4.57	17	1	2%	0.00	6	4.57	600%	----	69	2.55
Health Safety Net	1	1%	0.00	0	0	0%	0.00	1	0.00	----	----	11	1.18
MassHealth ACO/MCO <sup>4</sup>	25	32%	2.64	15	14	27%	3.21	11	-0.57	79%	-18%	268	2.15
MassHealth Fee-for-Service	1	1%	1.00	1	1	2%	1.00	0	0.00	0%	0%	16	1.94
MassHealth (Unspecified)	7	9%	1.14	3	3	6%	1.00	4	0.14	133%	14%	28	1.46
Medicare Only	7	9%	1.86	3	5	10%	0.40	2	1.46	40%	365%	34	1.74
Medicaid only - Out of State	2	3%	1.00	1	2	4%	0.50	0	0.50	0%	100%	13	1.23
Medicaid-Medicare	21	27%	2.52	13	16	31%	1.81	5	0.71	31%	39%	101	1.64
Tricare (VA)	0	0%	0.00	0	0	0%	0.00	0	0.00	----	----	2	1.50
Uninsured	8	10%	1.50	3	10	19%	1.10	-2	0.40	-20%	36%	87	1.36
State Agency Engagement													
DCF	6		3.00	7	5		1.80	1	1.20	20%	67%	119	2.28
DDS	4		8.00	13	1		3.00	3	5.00	300%	167%	34	3.88
DMH	18		2.11	10	11		0.91	7	1.20	64%	132%	70	1.90
DYS	2		1.50	2	1		1.00	1	0.50	100%	50%	5	1.20

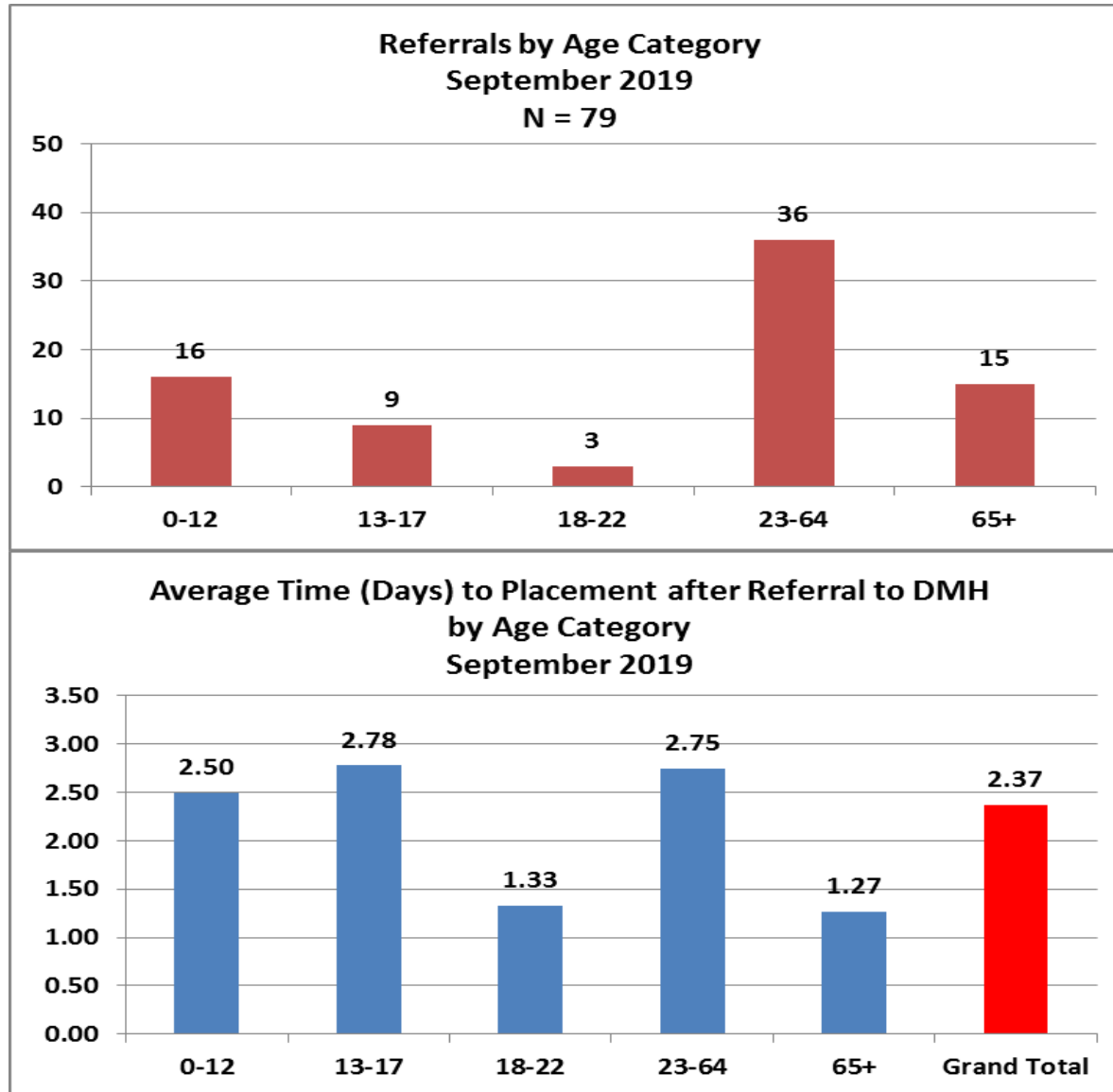
<sup>1</sup>This report covers the individuals who were referred to DMH (79) during the month of September.

<sup>2</sup> Time to placement is calculated as the number of days after DMH receives a referral and the patient is placed/discharged from the Emergency Room.

<sup>3</sup> ATP: Average Time to Placement

<sup>4</sup> ACO/MCO data includes the PCC Plan

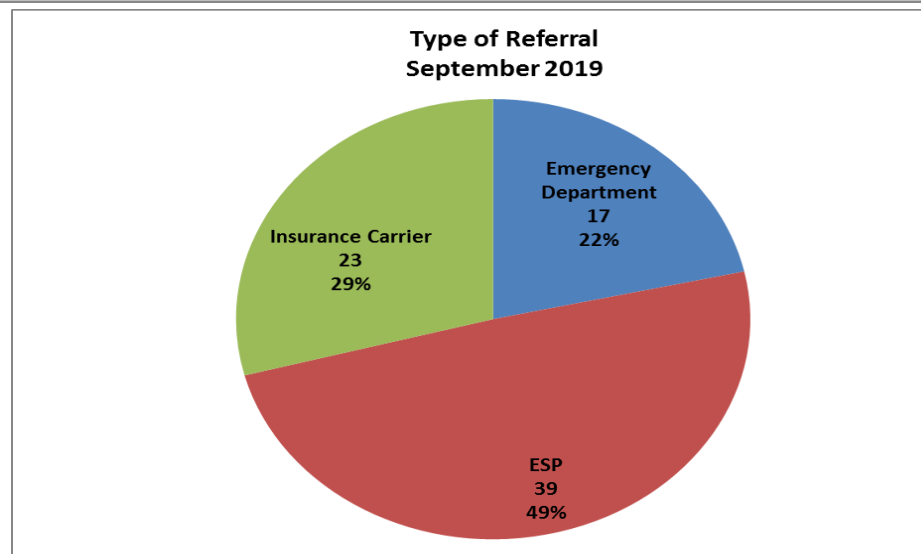
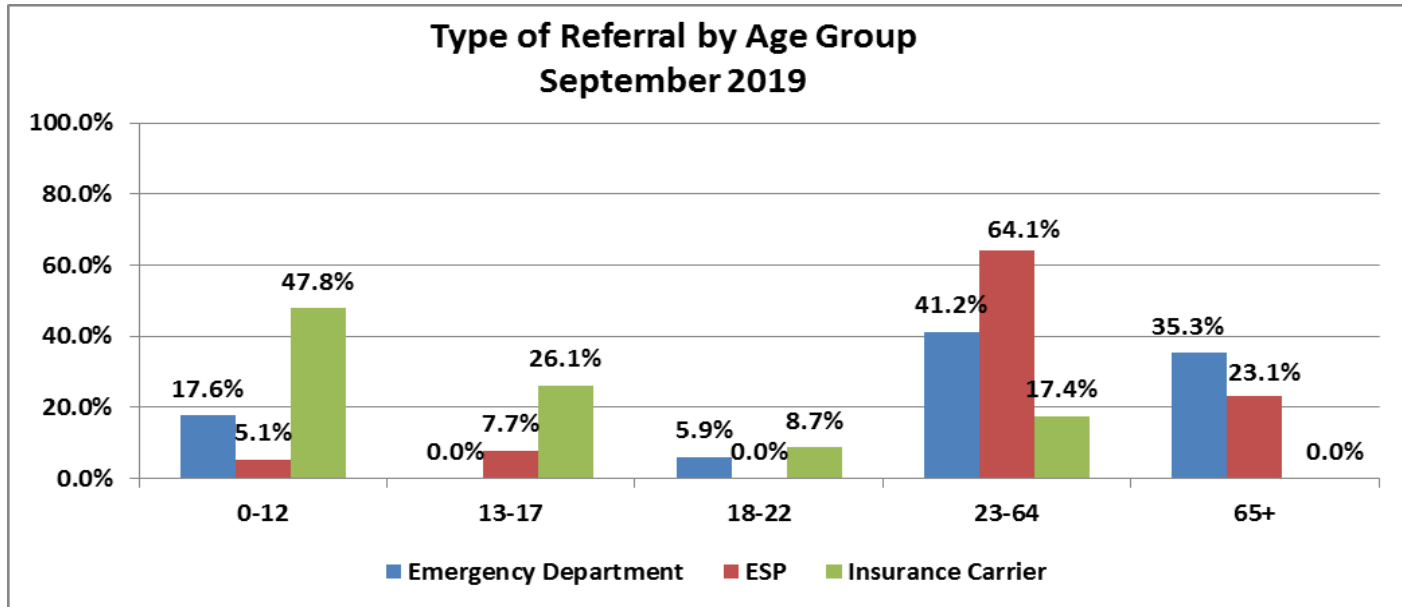
**Expedited Psychiatric Inpatient Admission Dashboard**  
**September 2019 Summary Statistics**  
**Total Number of Referrals – 79**



# Expedited Psychiatric Inpatient Admission Dashboard

## September 2019 Summary Statistics

### Total Number of Referrals – 79

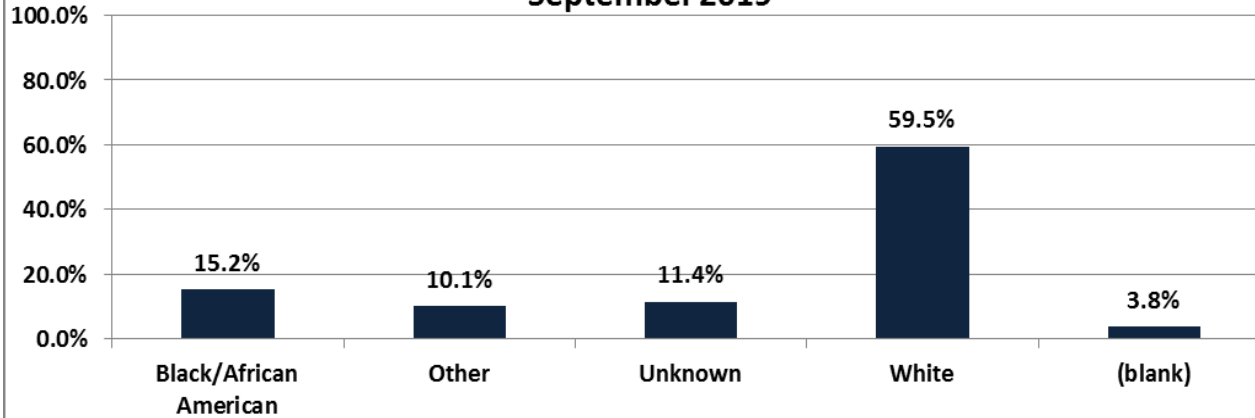


# Expedited Psychiatric Inpatient Admission Dashboard

## September 2019 Summary Statistics

### Total Number of Referrals – 79

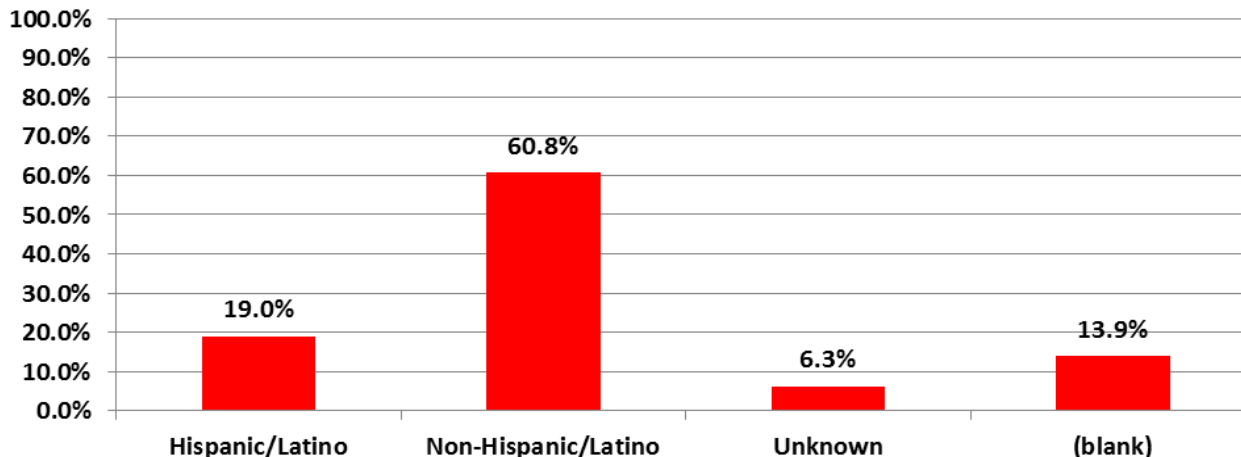
**Percentage of Referrals by Race**  
**September 2019**



**Number of Referrals by Race- September 2019**

Black/African American	12
Other	8
Unknown	9
White	47
(blank)	3
<b>Total</b>	<b>79</b>

**Percentage of Referrals by Ethnicity**  
**September 2019**



**Number of Referrals by Ethnicity - September 2019**

Hispanic/Latino	15
Non-Hispanic/Latino	48
Unknown	5
(blank)	11
<b>Total</b>	<b>79</b>

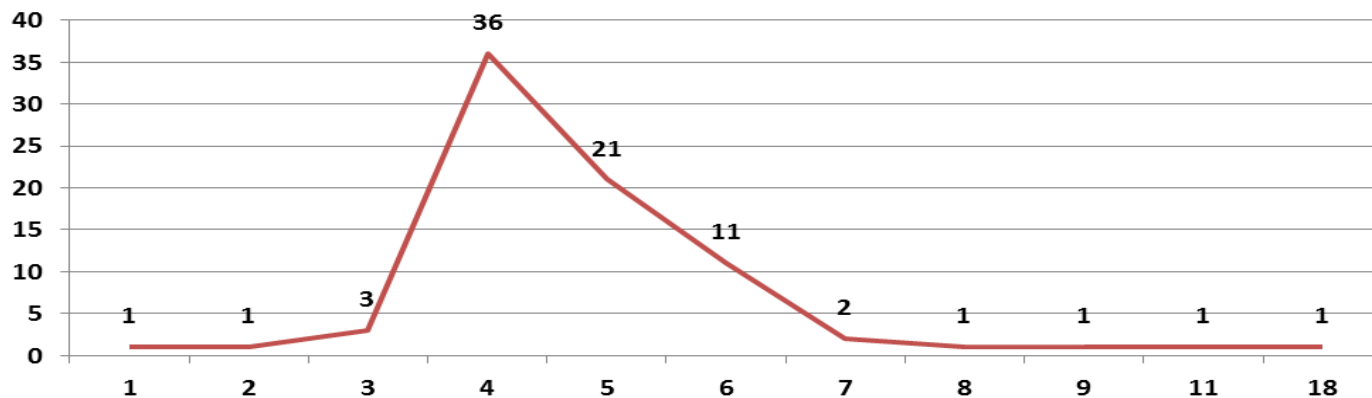
# Expedited Psychiatric Inpatient Admission Dashboard

## September 2019 Summary Statistics

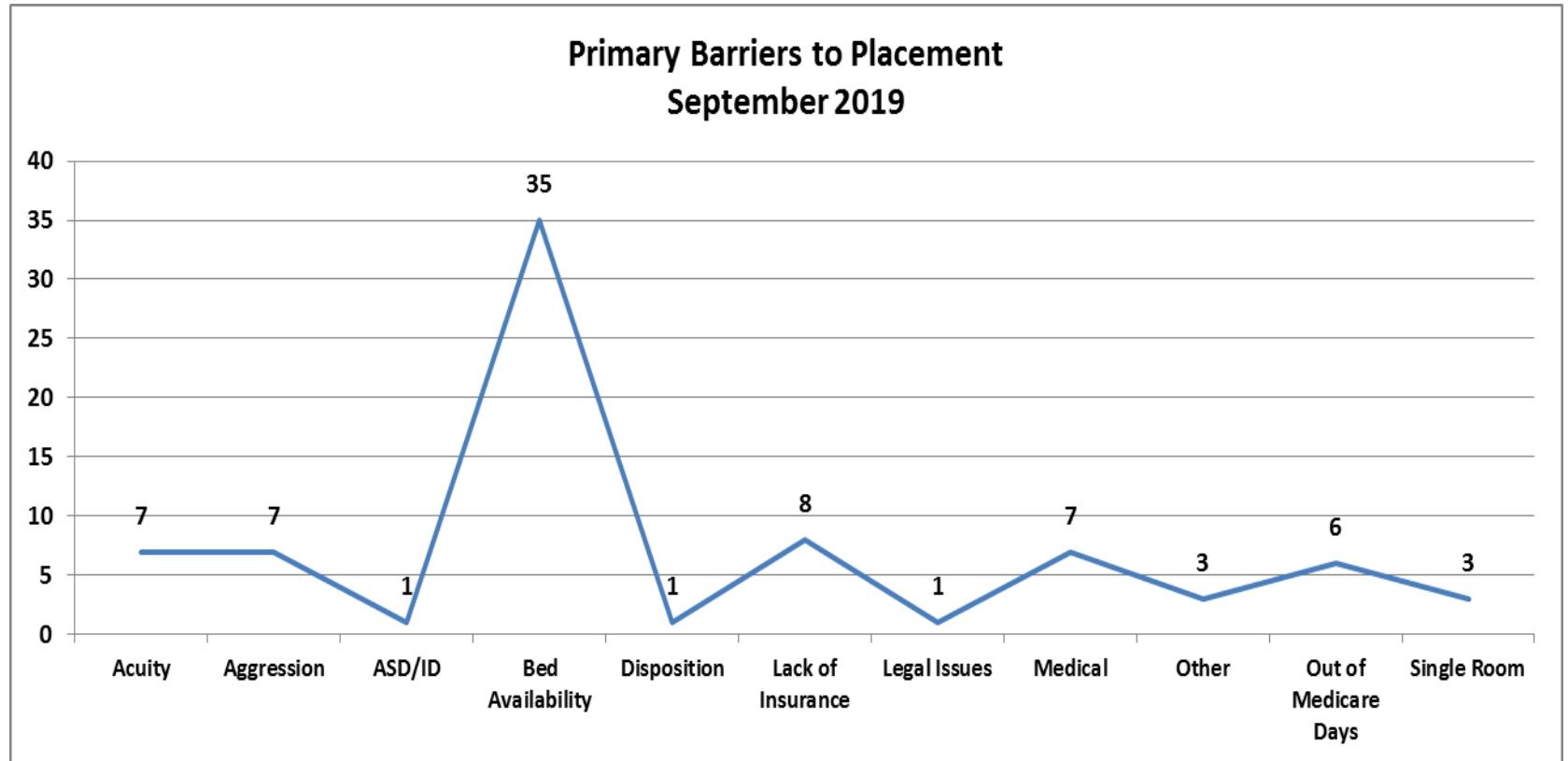
### Total Number of Referrals – 79

Number of Days between Initial Evaluation in ED to Date Referral was Received by DMH by Age Group						
Number of Days	0-12	13-17	18-22	23-64	65+	Total
1	0	0	0	1	0	1
2	1	0	0	0	0	1
3	0	0	0	0	3	3
4	3	7	2	19	5	36
5	8	1	0	10	2	21
6	2	1	1	4	3	11
7	1	0	0	0	1	2
8	1	0	0	0	0	1
9	0	0	0	0	1	1
11	0	0	0	1	0	1
18	0	0	0	1	0	1
<b>Total</b>	<b>16</b>	<b>9</b>	<b>3</b>	<b>36</b>	<b>15</b>	<b>79</b>

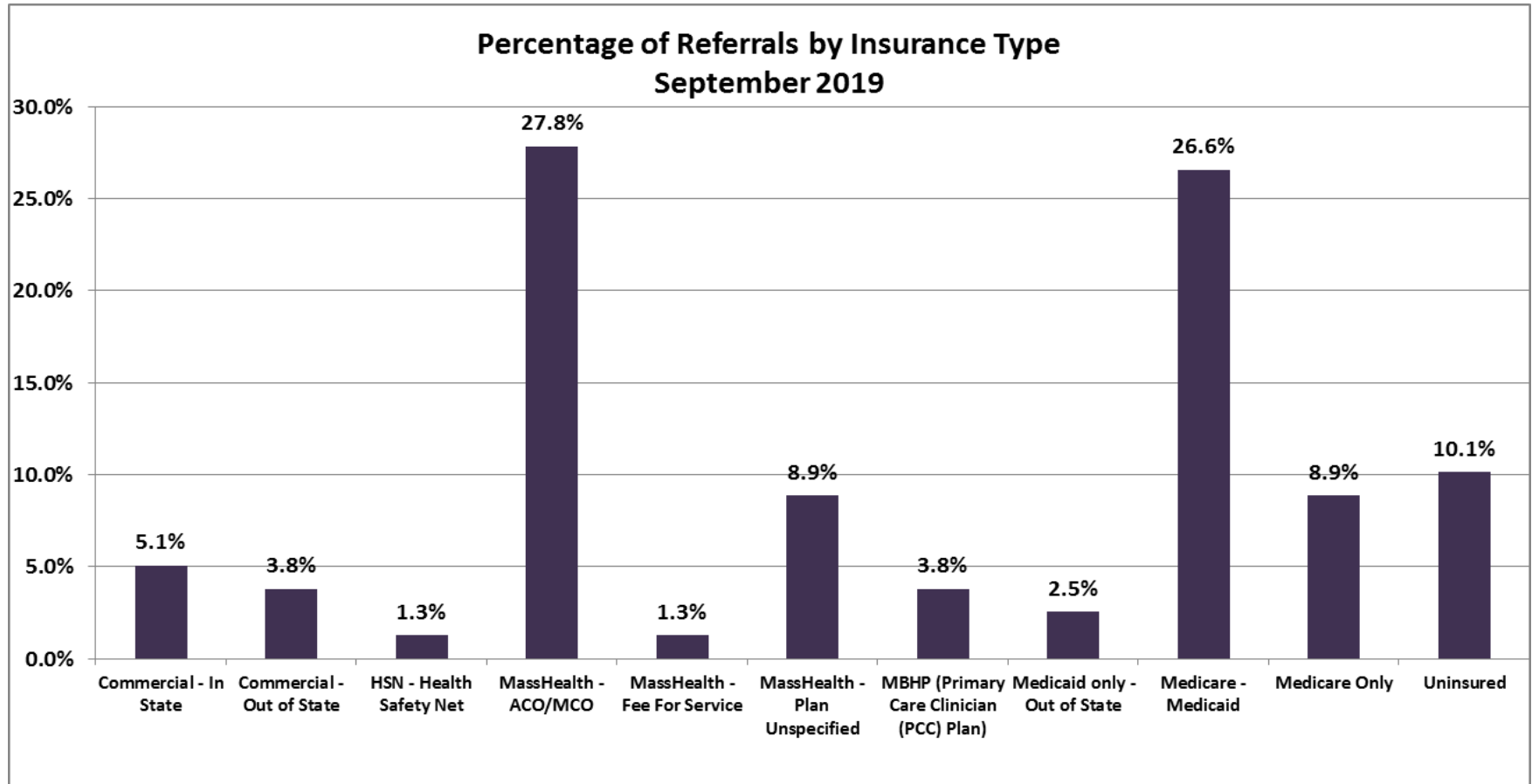
**Number of Referrals by the Number of Days from an Initial ED Evaluation to when a Referral was Received by DMH  
September 2019**



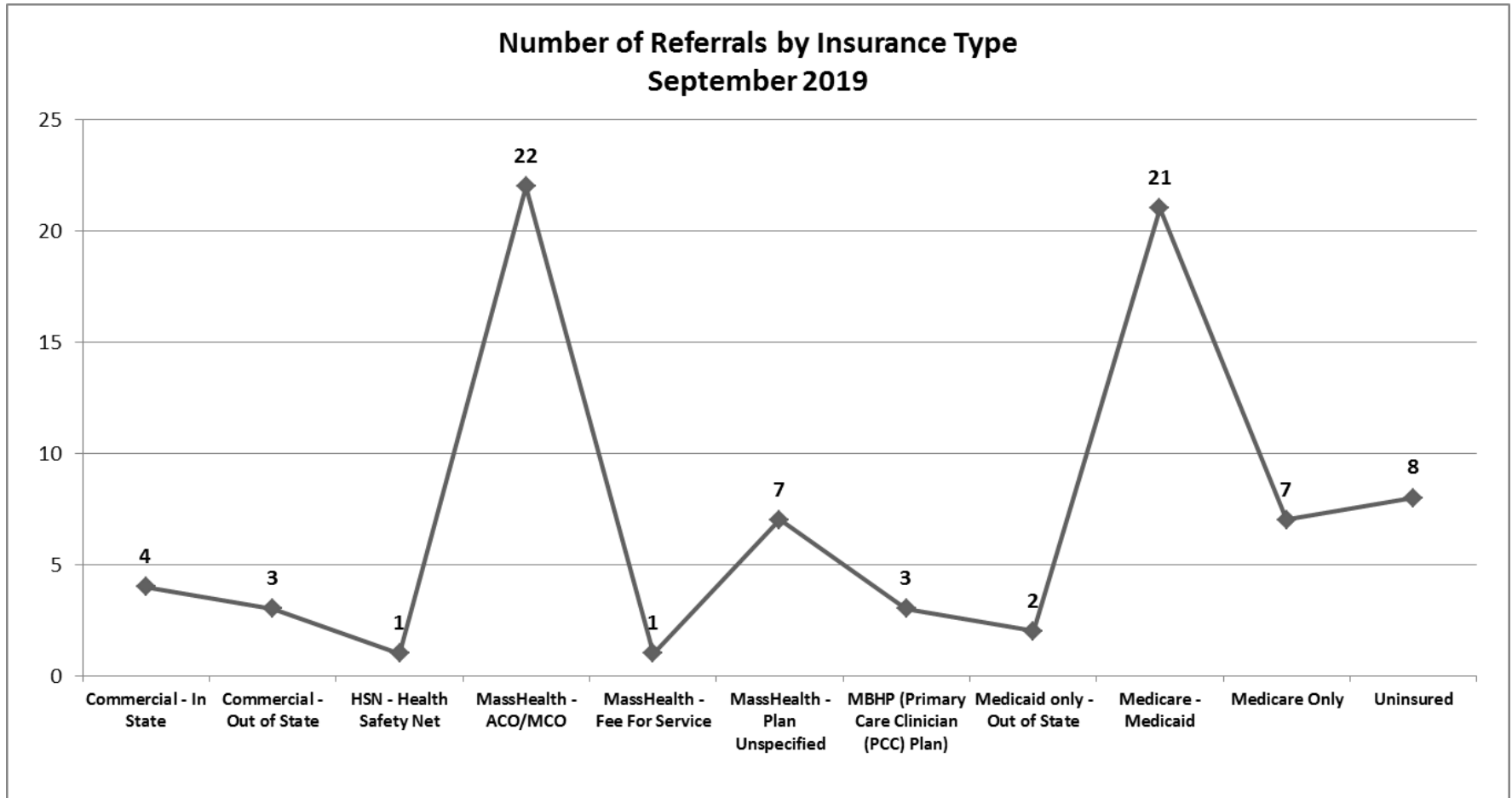
**Expedited Psychiatric Inpatient Admission Dashboard**  
**September 2019 Summary Statistics**  
**Total Number of Referrals – 79**



**Expedited Psychiatric Inpatient Admission Dashboard**  
**September 2019 Summary Statistics**  
**Total Number of Referrals – 79**

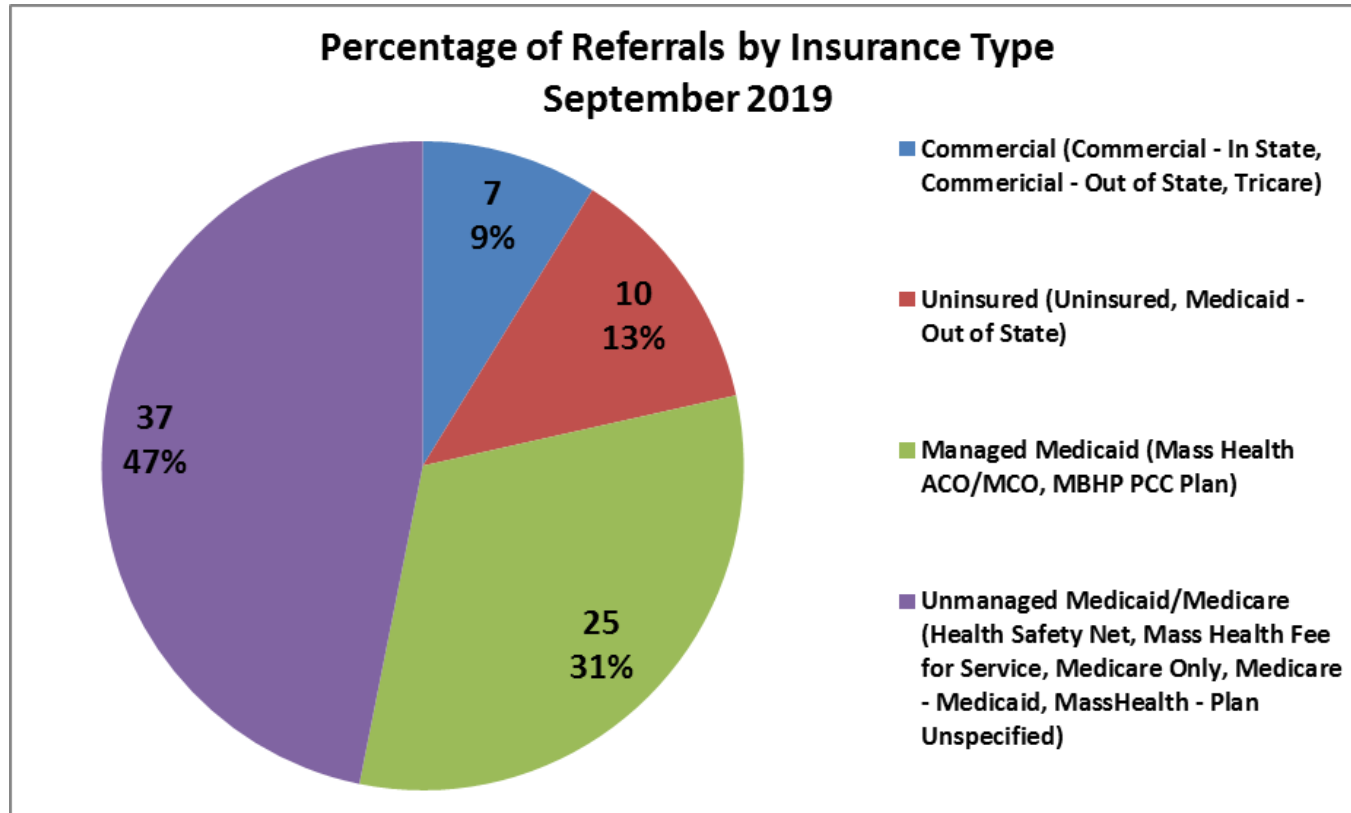


**Expedited Psychiatric Inpatient Admission Dashboard**  
**September 2019 Summary Statistics**  
**Total Number of Referrals – 79**

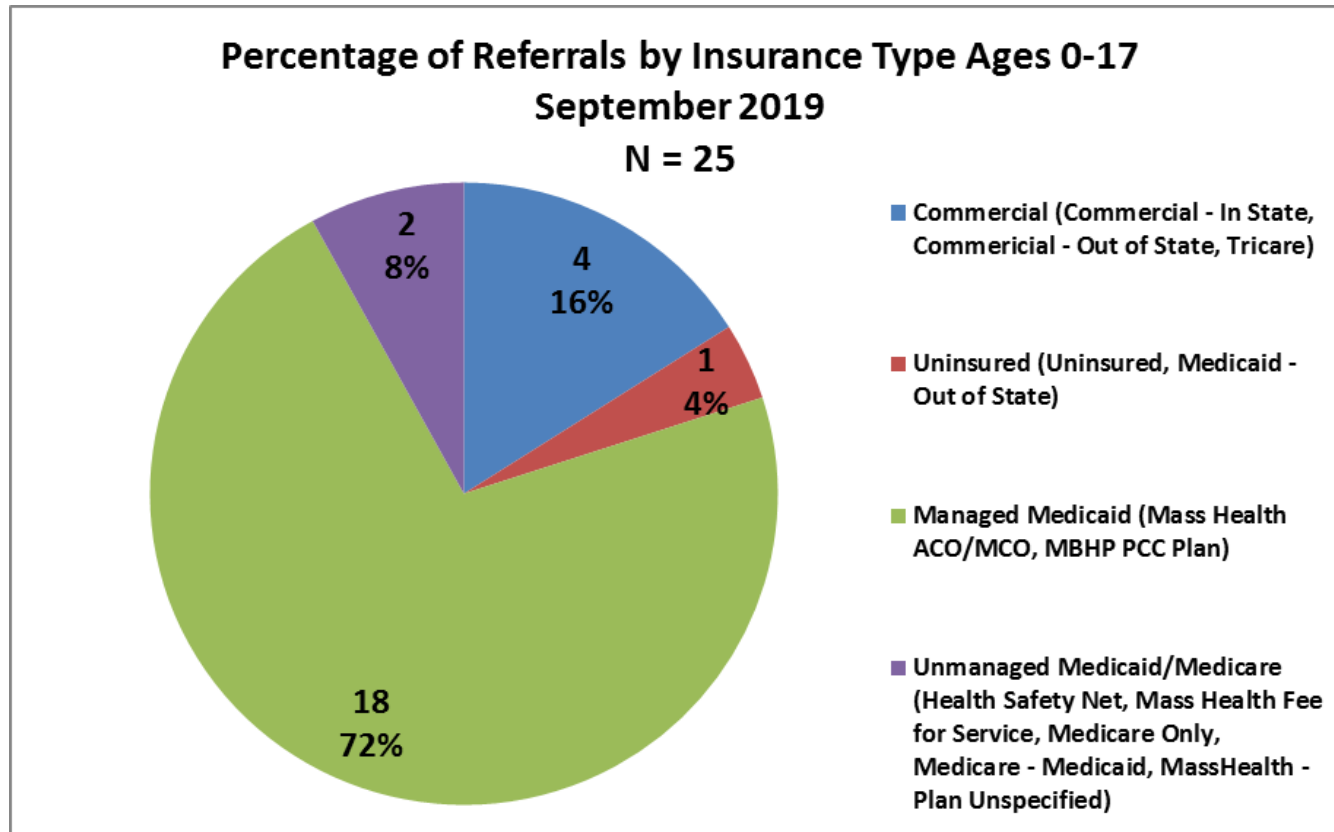




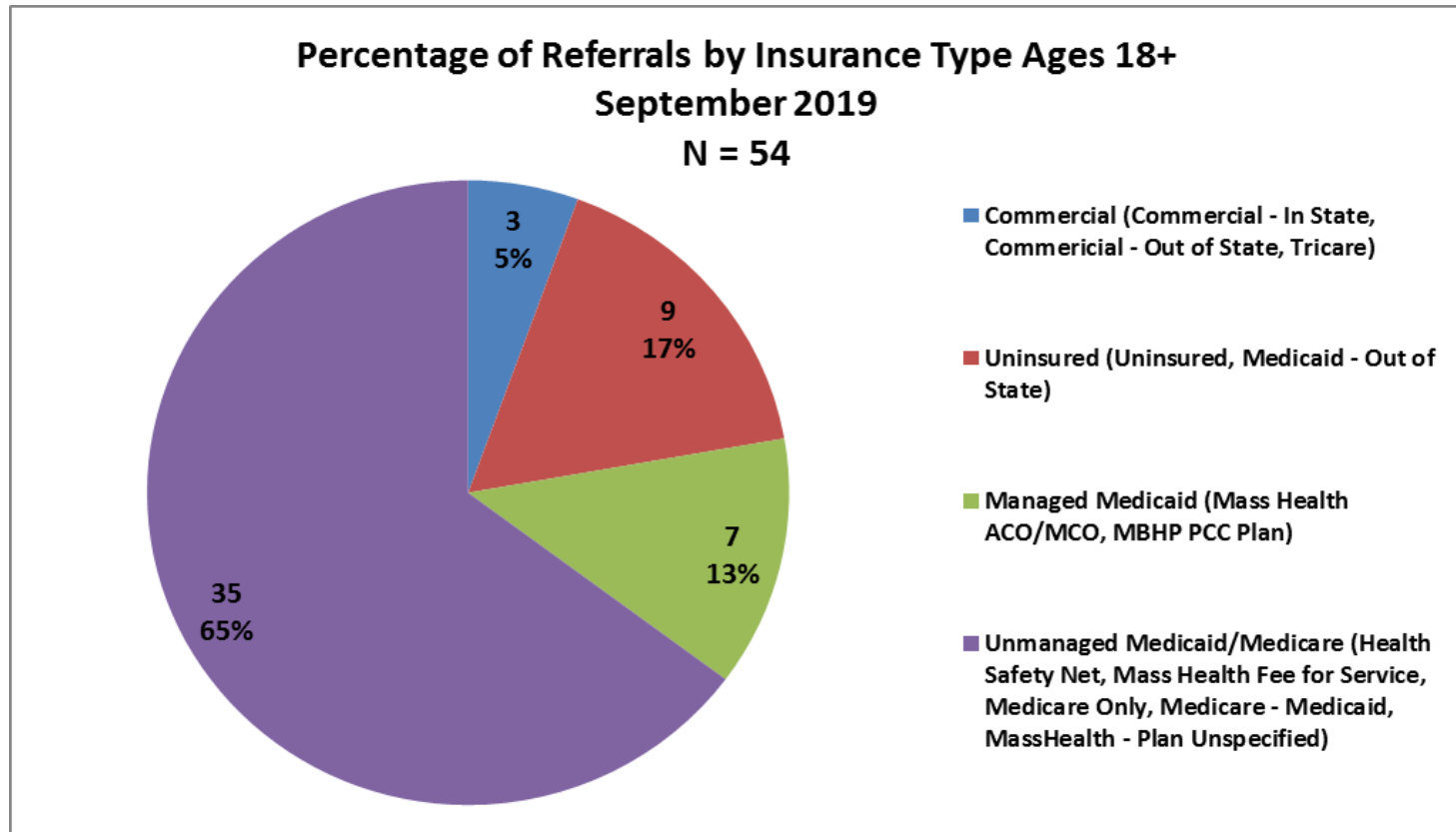
**Expedited Psychiatric Inpatient Admission Dashboard**  
**September 2019 Summary Statistics**  
**Total Number of Referrals – 79**



**Expedited Psychiatric Inpatient Admission Dashboard**  
**September 2019 Summary Statistics**  
**Total Number of Referrals – 79**



**Expedited Psychiatric Inpatient Admission Dashboard**  
**September 2019 Summary Statistics**  
**Total Number of Referrals – 79**



**Expedited Psychiatric Inpatient Admission Dashboard**  
**September 2019 Summary Statistics**  
**Total Number of Referrals – 79**

<b>Boarding Hospitals whose Referrals had NO Insurance</b>	
<b>September 2019 N=10</b>	
BID Boston	2
BID Milton	1
BID Plymouth (Jordan Hosp.)	1
Cape Cod Hosp.	1
Charlton Memorial (Southcoast)	1
Lawrence General	1
Leominster Hosp. (UMASS)	1
Milford Regional Medical	1
Mount Auburn	1

<b>Placement Hospitals who took Referrals that had NO Insurance</b>	
<b>September 2019 N =10</b>	
Cape Cod Hospital	1
Emerson Hospital	2
Hospital for Behavioral Medicine	1
Level of Care Changed	1
Metrowest Medical Center	1
Pocasset Mental Health Center	1
St. Elizabeth's Medical Center	1
Westborough Behavioral Healthcare Hospital, LLC	1
Whittier Pavilion	1

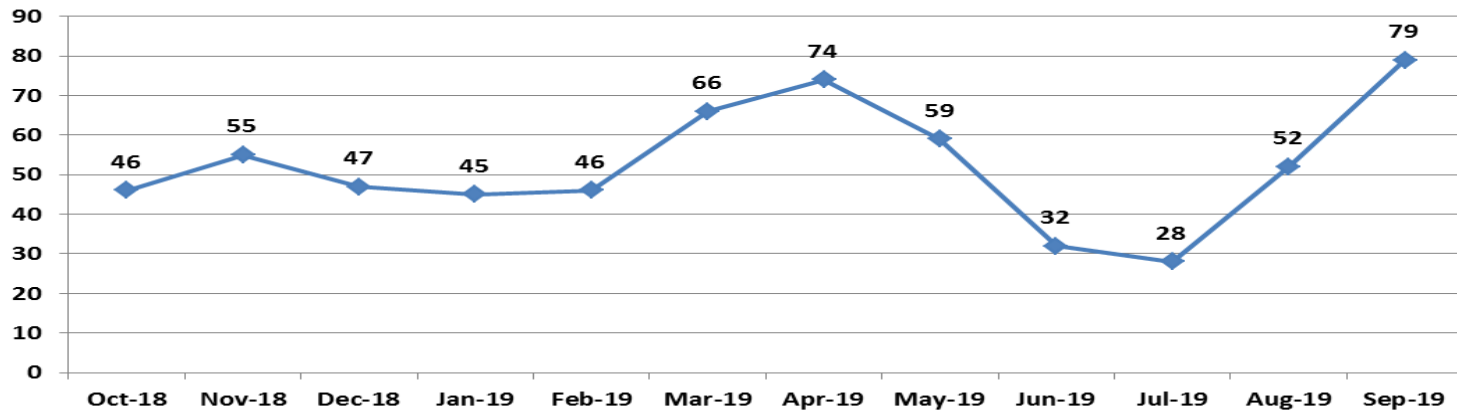
**Expedited Psychiatric Inpatient Admission Dashboard**  
**September 2019 Summary Statistics**  
**Total Number of Referrals – 79**

<b>Top Boarding Hospitals September Ages 0-17</b>		<b>Top Placement Hospitals September Ages 0-17</b>	
Children's Hosp.	6	Hospital for Behavioral Medicine	5
BID Plymouth (Jordan Hosp.)	2	CHA Cambridge Hospital	4
Marlborough Hosp. (UMASS)	2	Children's Hospital	3
Sturdy Memorial	2	Level of Care Changed	3
Athol Memorial	1	Anna Jaques Hospital	2

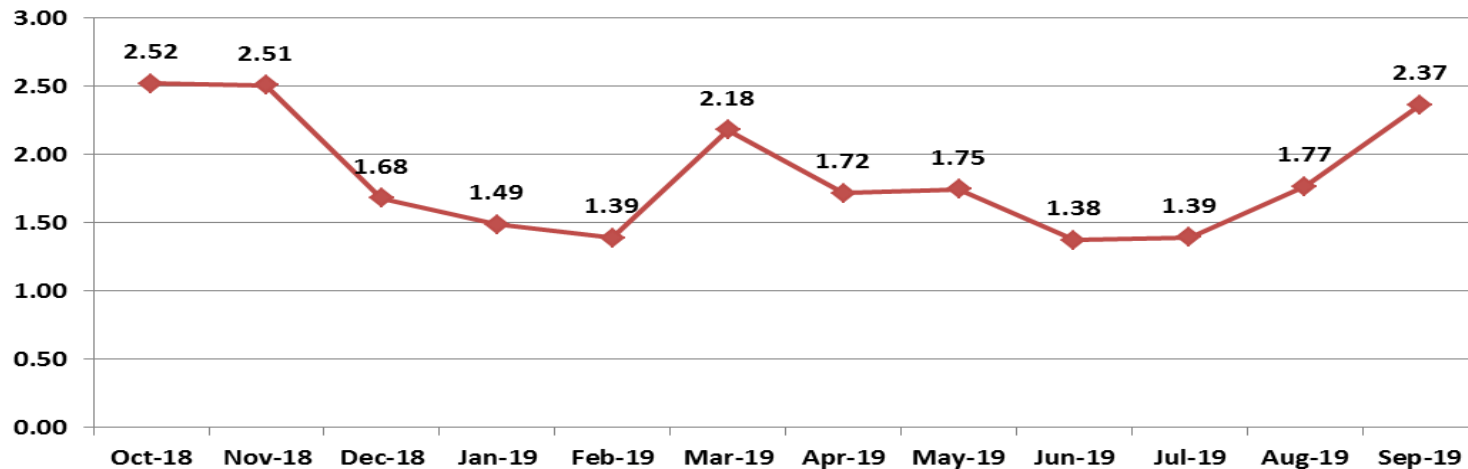
<b>Top Boarding Hospitals September Ages 18+</b>		<b>Top Placement Hospitals September Ages 18+</b>	
St. Luke's Hosp. (Southcoast)	6	Level of Care Changed	7
BID Plymouth (Jordan Hosp.)	4	Southcoast Behavioral Medicine	6
Lawrence General	4	Emerson Hospital	4
Sturdy Memorial	4	St. Elizabeth's Medical Center	4
BID Boston	3	Arbour Hospital	3

**Expedited Psychiatric Inpatient Admission Dashboard**  
**October 2018 - September 2019 Summary Statistics**  
**Total Number of Referrals 629**

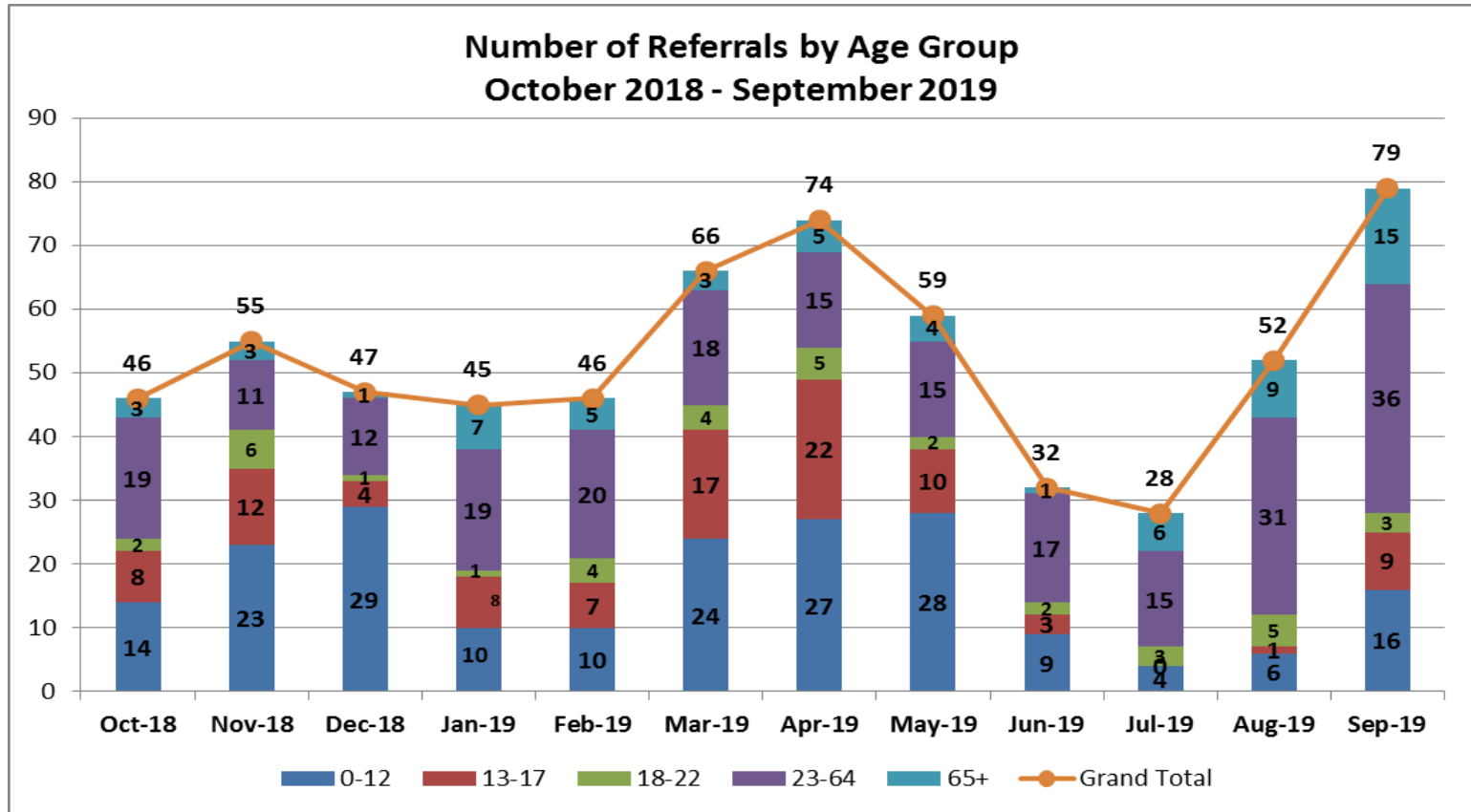
**Total Referrals**  
**October 2018 - September 2019**



**Average Time to Placement After Referral to DMH by Month**  
**October 2018 - September 2019**



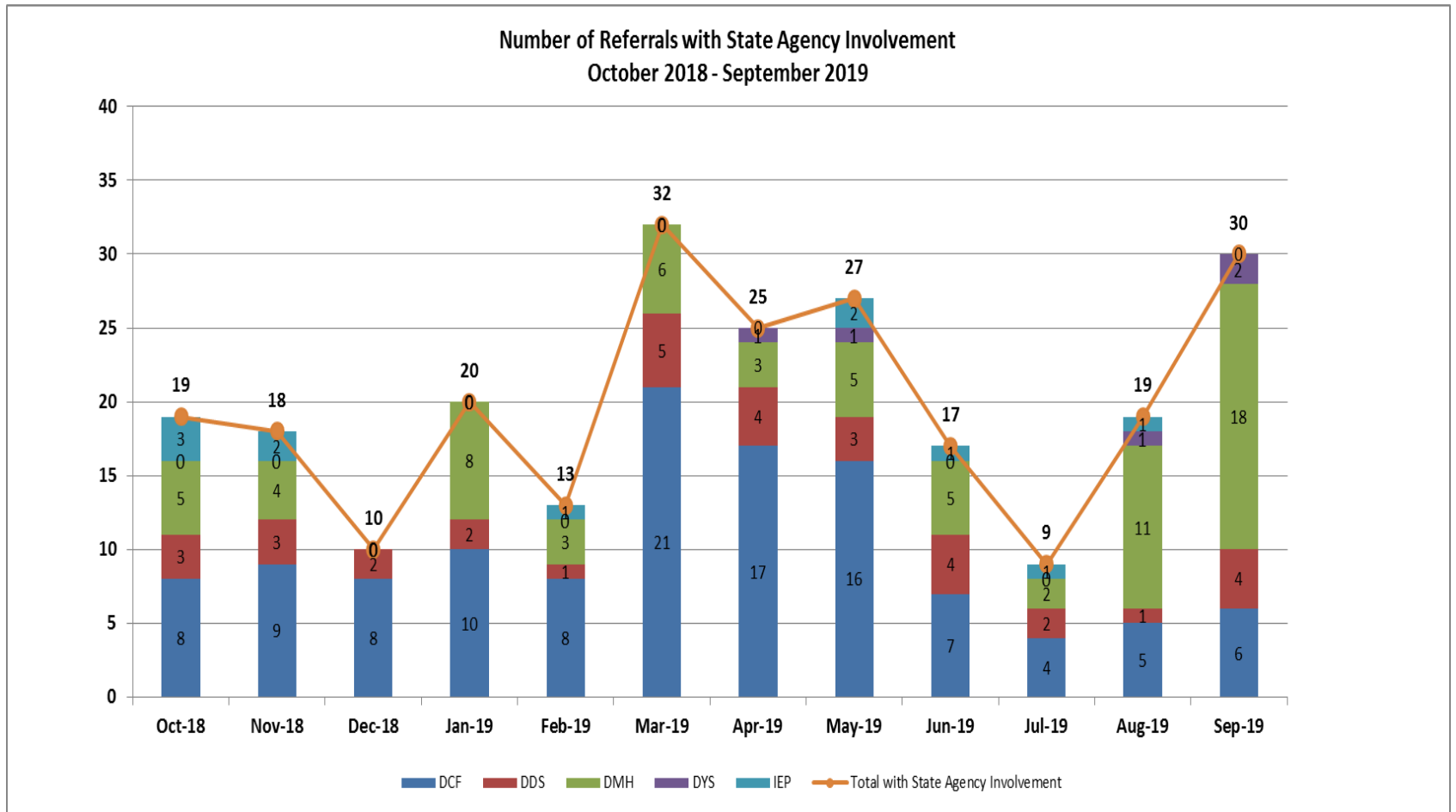
**Expedited Psychiatric Inpatient Admission Dashboard**  
**October 2018 - September 2019 Summary Statistics**  
**Total Number of Referrals 629**



# Expedited Psychiatric Inpatient Admission Dashboard

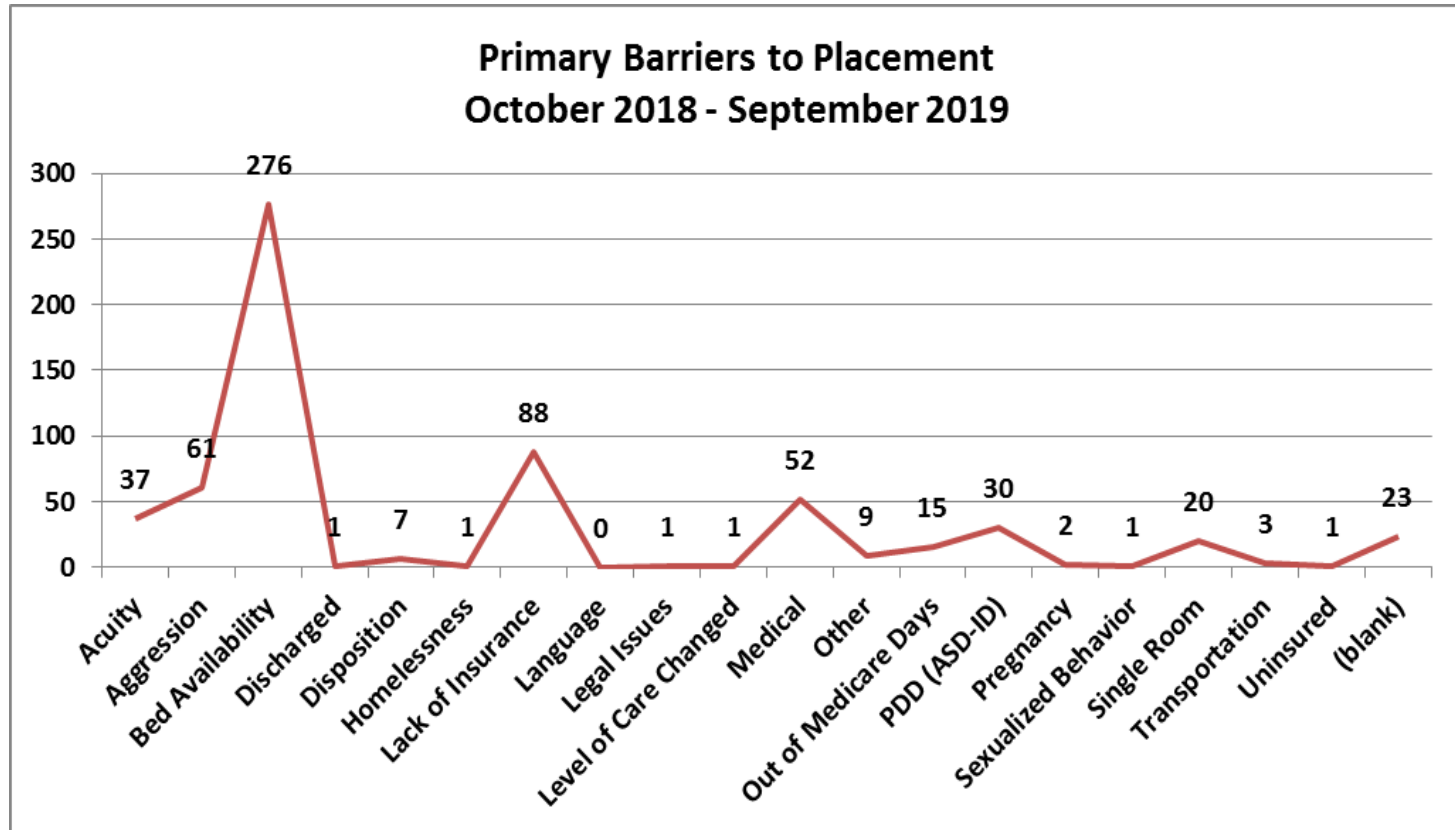
## October 2018 - September 2019 Summary Statistics

### Total Number of Referrals 629



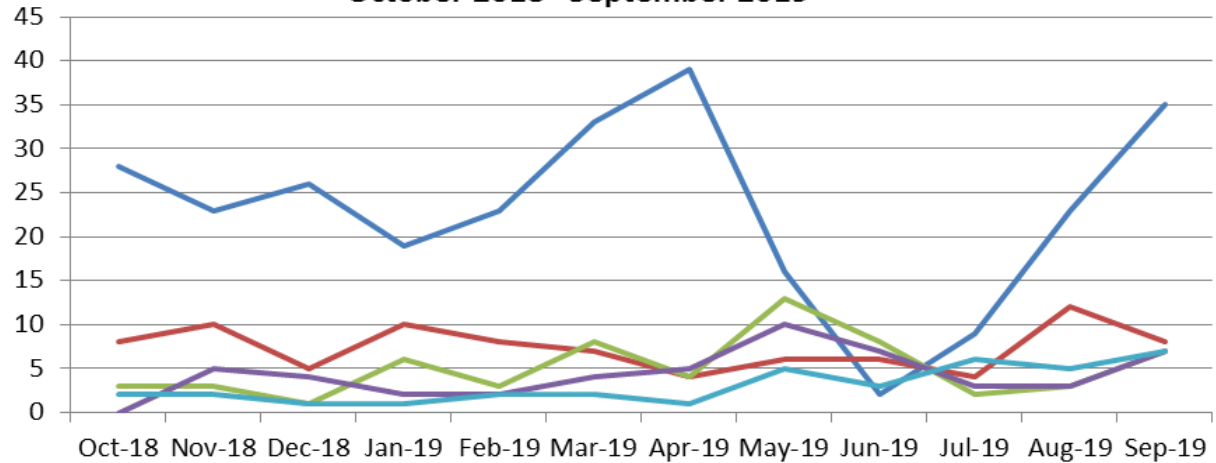


**Expedited Psychiatric Inpatient Admission Dashboard**  
**October 2018 - September 2019 Summary Statistics**  
**Total Number of Referrals 629**



**Expedited Psychiatric Inpatient Admission Dashboard**  
**October 2018 – September 2019 Summary Statistics**  
**Total Number of Referrals 629**

**Top 5 Barriers to Placement by Month**  
**October 2018 - September 2019**



	Oct-18	Nov-18	Dec-18	Jan-19	Feb-19	Mar-19	Apr-19	May-19	Jun-19	Jul-19	Aug-19	Sep-19
Bed Availability	28	23	26	19	23	33	39	16	2	9	23	35
Lack of Insurance	8	10	5	10	8	7	4	6	6	4	12	8
Aggression	3	3	1	6	3	8	4	13	8	2	3	7
Medical	0	5	4	2	2	4	5	10	7	3	3	7
Acuity	2	2	1	1	2	2	1	5	3	6	5	7

**Expedited Psychiatric Inpatient Admission Dashboard**  
**October 2018 - September 2019 Summary Statistics**  
**Total Number of Referrals 629**

<b>Top Boarding Hospitals YTD Ages 0 - 17</b>	
Children's Hosp.	42
Brockton Hosp.	21
South Shore Hosp.	13
Norwood Hosp. (Steward)	12
St. Luke's Hosp. (Southcoast)	12
Sturdy Memorial	12
Baystate Medical Springfield	10
Boston Medical Center	10
Cape Cod Hosp.	10
Lawrence General	10

<b>Top Boarding Hospitals YTD Ages 18+</b>	
St. Luke's Hosp. (Southcoast)	33
Mass General Hosp.	25
Lawrence General	23
Lowell General Hosp.	19
Sturdy Memorial	19
South Shore Hosp.	18
Mount Auburn	17
BID Plymouth (Jordan Hosp.)	15
BID Boston	13
Leominster Hosp. (UMASS)	12

<b>Top Placement Hospitals YTD Ages 0 -17</b>	
CHA Cambridge Hospital	67
Level of care changed	32
Discharged Home	27
TaraVista Behavioral Health Center	22
Westborough Behavioral Healthcare Hospital, LLC	18
Anna Jacques Hospital	17
Hospital for Behavioral Medicine	15
Arbour Hospital	14
Hampstead Hospital	13
Providence Behavioral Health Hosp. - Mercy Medical Center	13

<b>Top Placement Hospitals YTD Ages 18+</b>	
Southcoast Behavioral Health	37
Level of care changed	29
Discharged	25
Arbour Hospital	22
Massachusetts General Hospital	13
Emerson Hospital	12
St. Elizabeth's Medical Center	12
Anna Jacques Hospital	11
Bayridge	9
MetroWest Medical Center	9