

CBHI Service Utilization

July 1, 2009 through June 30, 2010

Prepared by Office of Behavioral Health Staff

Revised 11/23/2010





Number of Members Who Received CBHI Services

**At Any Point Between
July 1, 2009 through June 30, 2010**

- This CBHI service data is based on Managed Care encounter data for members who have received the listed CBHI services. The data is submitted to MassHealth by each MassHealth managed care organization. The data is counted by member id, eliminating duplicate member counts.
- MassHealth membership data is from the MassHealth data warehouse.
- Because there are different MassHealth eligibility requirements for some CBHI services, the Table 1 reflects the appropriate denominator for each CBHI service.



Number and Percent of MassHealth Members Under 21 Who Received CBHI Services At Any Point Between

July 1, 2009 through June 30, 2010

Table 1

Table 1		
Average Number of MassHealth Members under 21 eligible *		478,661
*Includes members in Standard and CommonHealth		
CBHI Services	FY 2010 Number of Members who Received Service	Percentage of MassHealth Members Under 21 who Received Service
Intensive Care Coordination	6479	1.35%
Family Support and Training	5281	1.10%
In-Home Behavioral Services	242	0.05%
Therapeutic Mentoring	2735	0.57%
Average Number of MassHealth Members under 21 eligible **		521,321
**Includes members in Standard, CommonHealth, and managed care enrolled members in Basic, Essential, and Family Assistance		
CBHI Services	FY 2010 Number of Members who Received Service	Percentage of MassHealth Members Under 21 who Received Service
In-Home Therapy	7492	1.44%
Youth Mobile Crisis Intervention	9727	1.87%
ALL CBHI Services	18473	3.54%



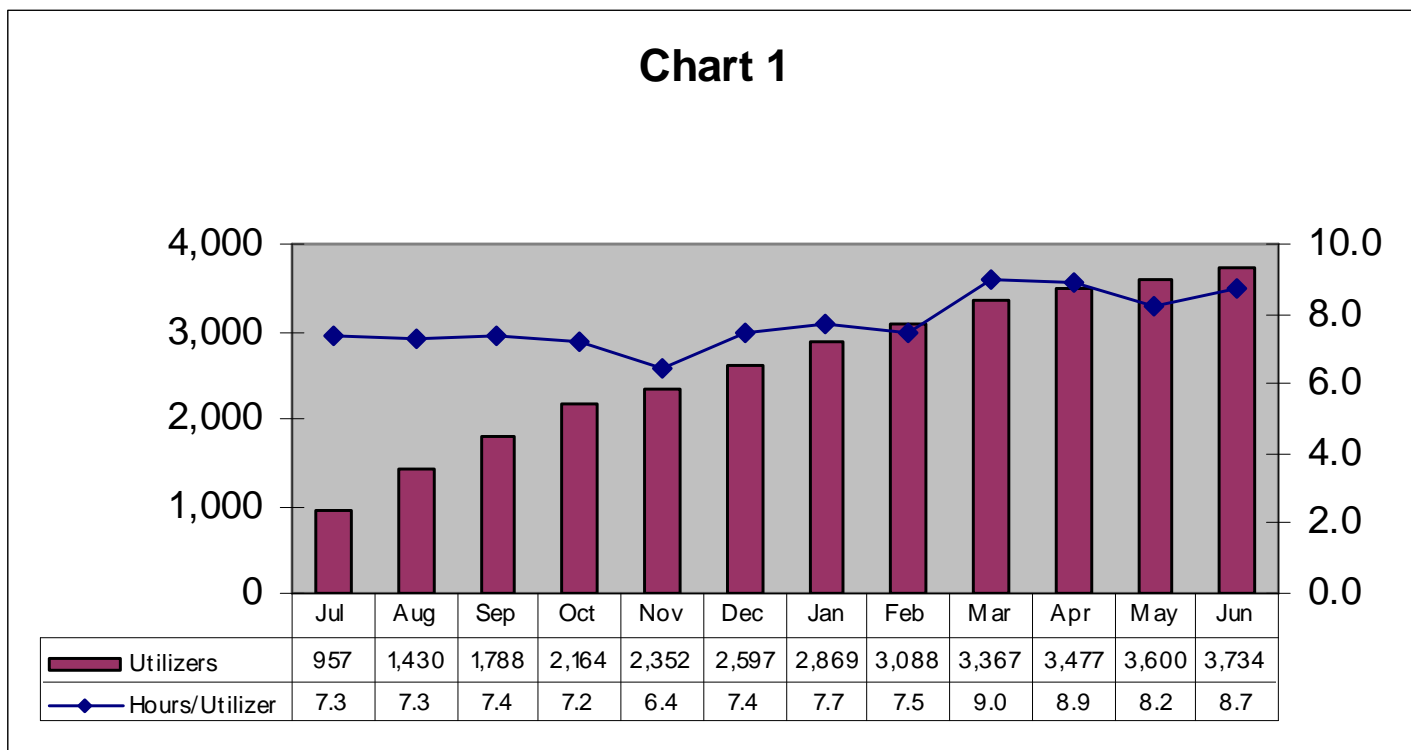
Number of Members Who Received CBHI Services By Month with Average Hours of Service Utilization

July 1, 2009 through June 30, 2010

- CBHI Service data on the following pages is provided through June 30, 2010.
- The data is for the following six CBHI services:
 - Intensive Care coordination
 - Family Support and Training
 - In-Home Therapy
 - In-Home Behavioral Services
 - Therapeutic Mentoring
 - Youth Mobile Crisis Intervention
- Each of these services has three charts:
 - The first chart is a summary report showing both number of member using services (utilizers), and the average billed service hours per utilizer.
 - The second chart shows service utilizers by age group.
 - The third chart shows average billed service hours by age group.
- These data are based on managed care claims on members for whom providers have billed the CBHI service.
- The data is submitted to Masshealth by each managed care entity in the CBHI Cost and Utilization Reports and combined by Office of Behavioral Health Analytic Staff.
- The Number of Members using services is slightly inflated (<2%) because members who switch between health plans are counted more than once.



**Number of Members Using Intensive Care Coordination
by Month with
Average Hours of Service Utilization Per Utilizer
July 1, 2009 through June 30, 2010**

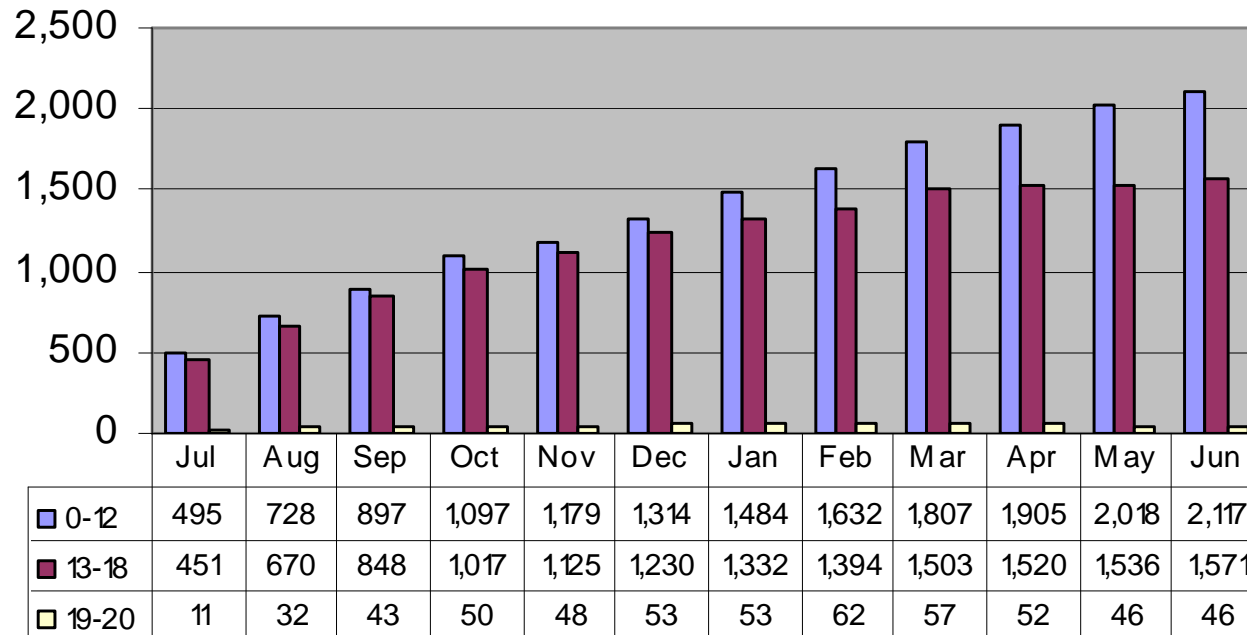




Number of Members Using Intensive Care Coordination by Month and Age

July 1, 2009 through June 30, 2010

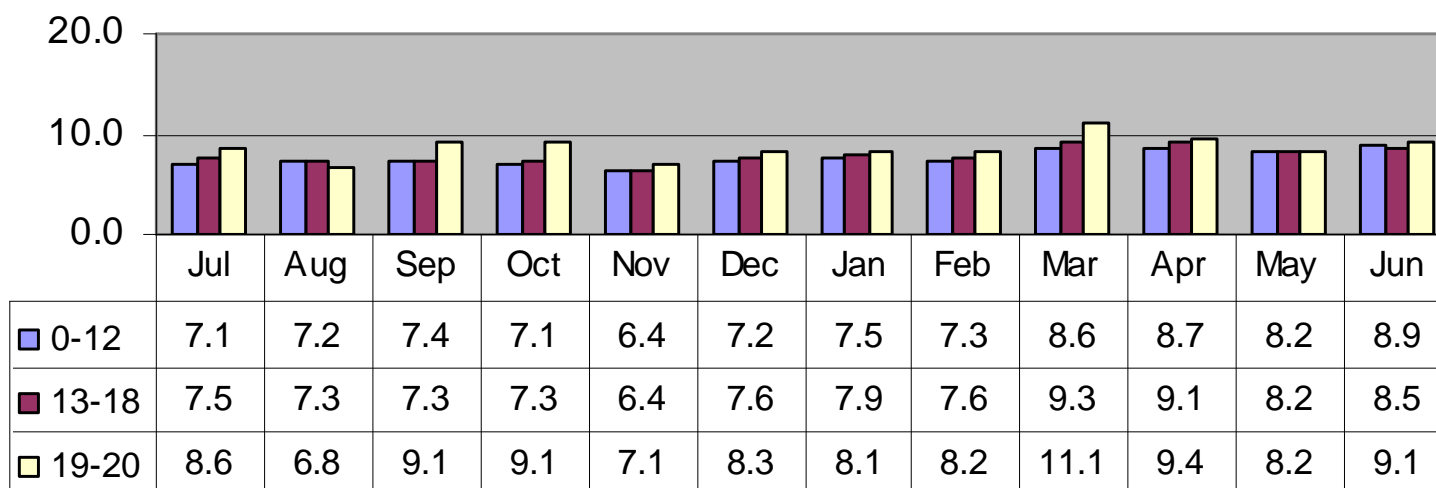
Chart 2





**Average Hours of Service Utilization
Per Member Using Intensive Care Coordination
by Month and Age
July 1, 2009 through June 30, 2010**

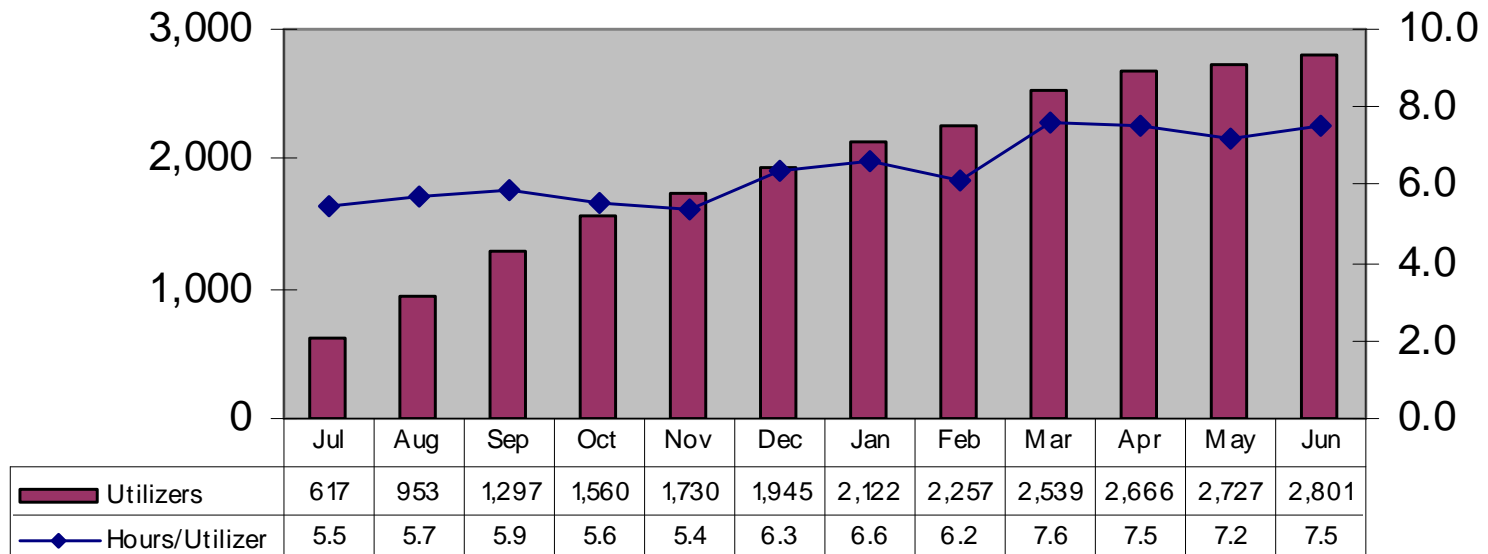
Chart 3





**Number of Members Using Family Support and Training
by Month with
Average Hours of Service Utilization Per Utilizer
July 1, 2009 through June 30, 2010**

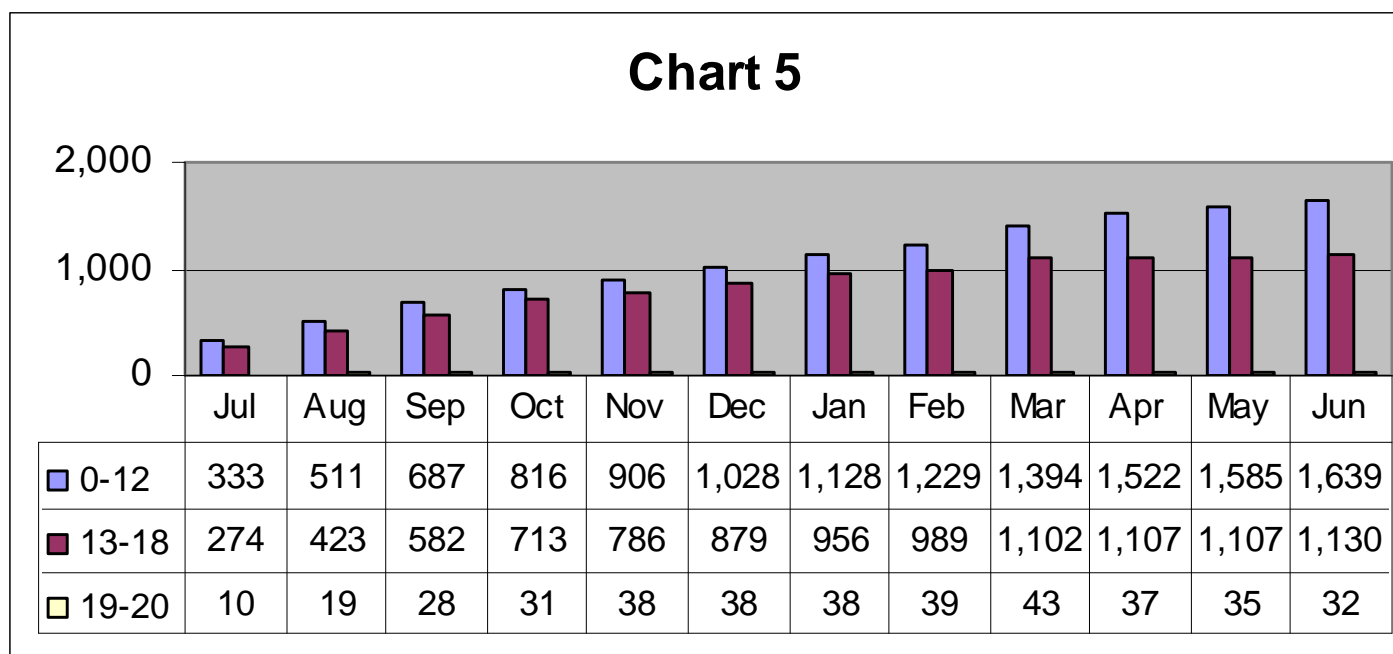
Chart 4





Number of Members Using Family Support and Training by Month and Age

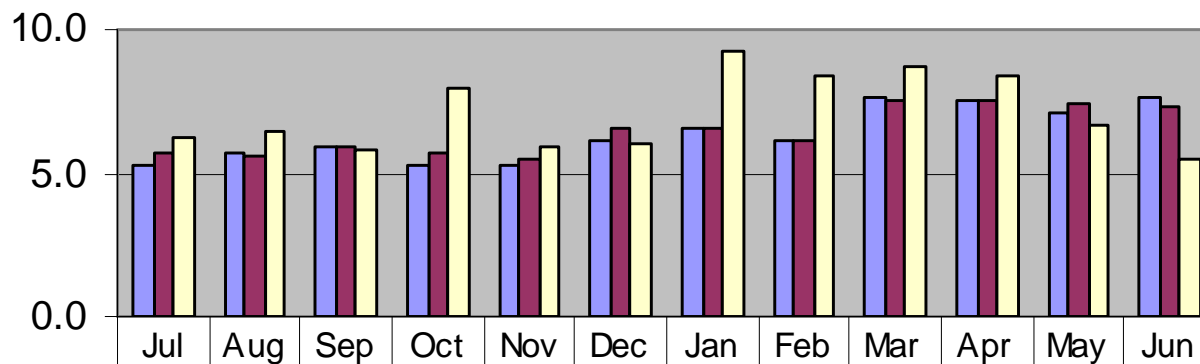
July 1, 2009 through June 30, 2010





**Average Hours of Service Utilization
Per Member Using Family Support and Training
by Month and Age
July 1, 2009 through June 30, 2010**

Chart 6

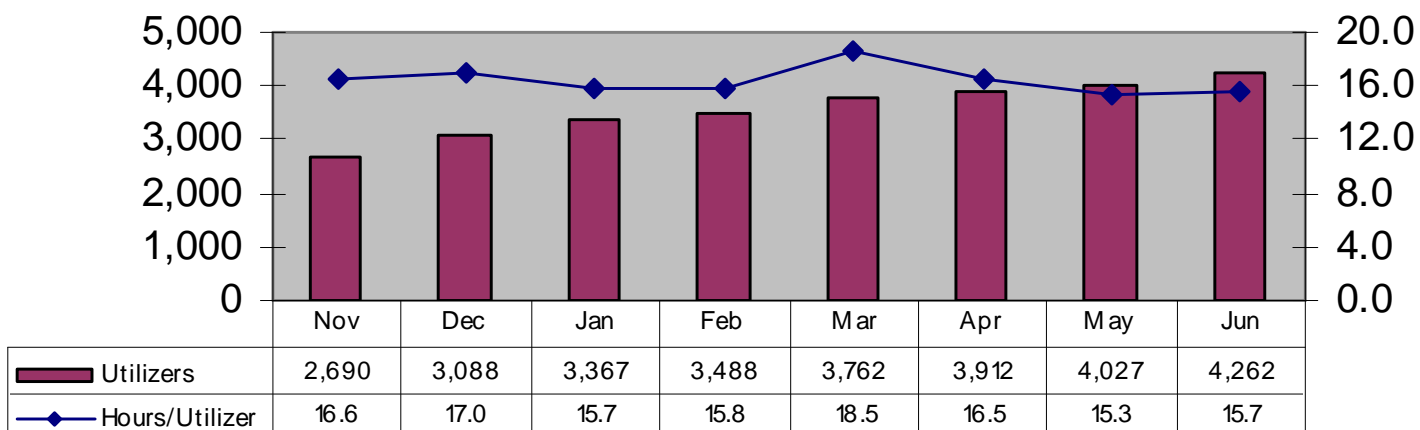


0-12	5.2	5.7	5.9	5.3	5.3	6.2	6.5	6.1	7.6	7.5	7.1	7.6
13-18	5.7	5.6	5.9	5.7	5.5	6.6	6.6	6.1	7.5	7.5	7.4	7.3
19-20	6.2	6.4	5.8	8.0	5.9	6.1	9.3	8.4	8.7	8.4	6.6	5.5



**Number of Members Using In-Home Therapy
by Month with
Average Hours of Service Utilization Per Utilizer
November 1, 2009 through June 30, 2010**

Chart 7

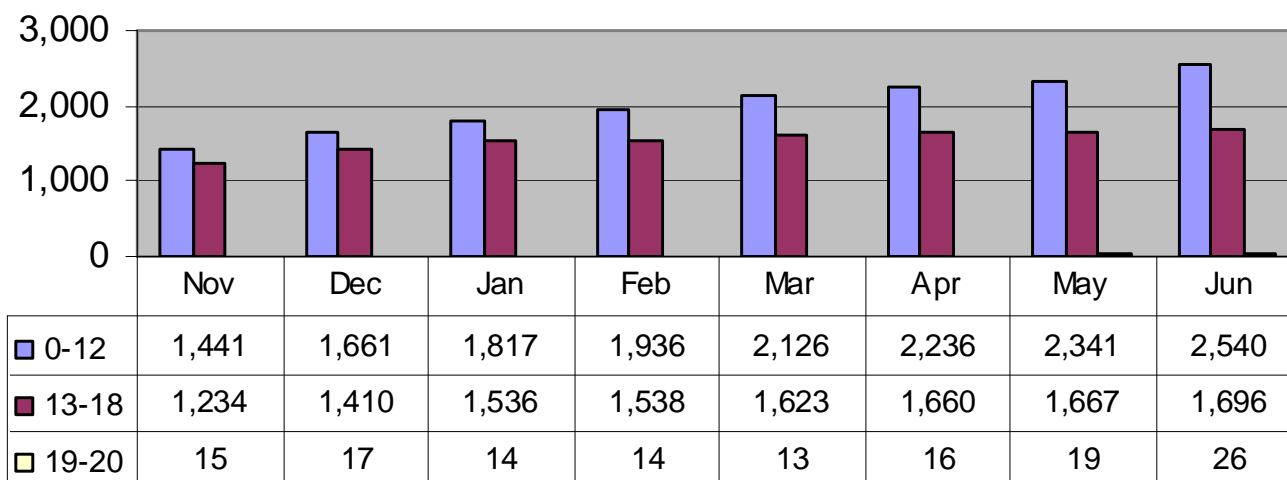




Number of Members Using In-Home Therapy by Month and Age

November 1, 2009 through June 30, 2010

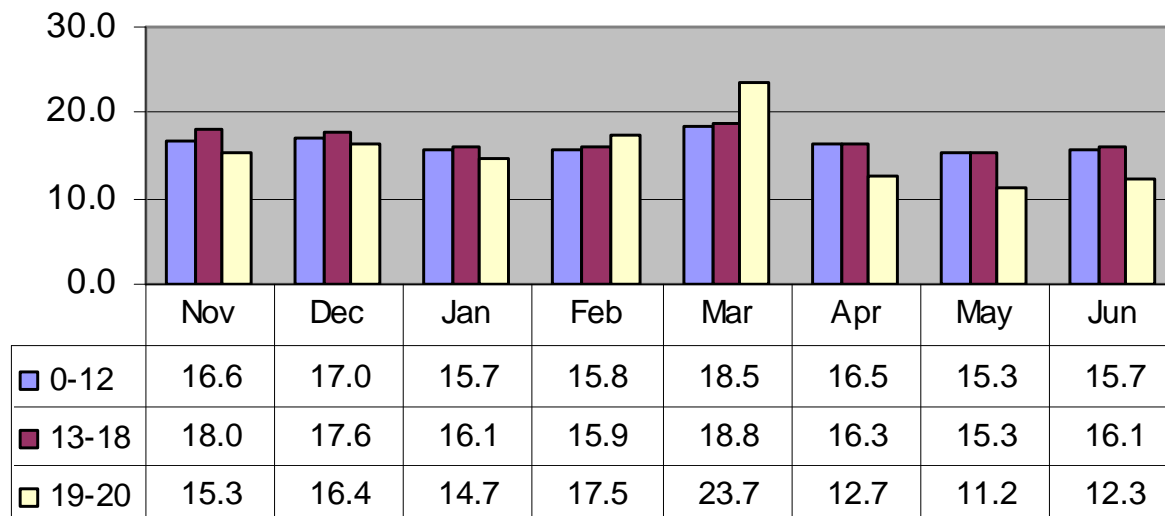
Chart 8





**Average Hours of Service Utilization
Per Member Using In-Home Therapy
by Month and Age
November 1, 2009 through June 30, 2010**

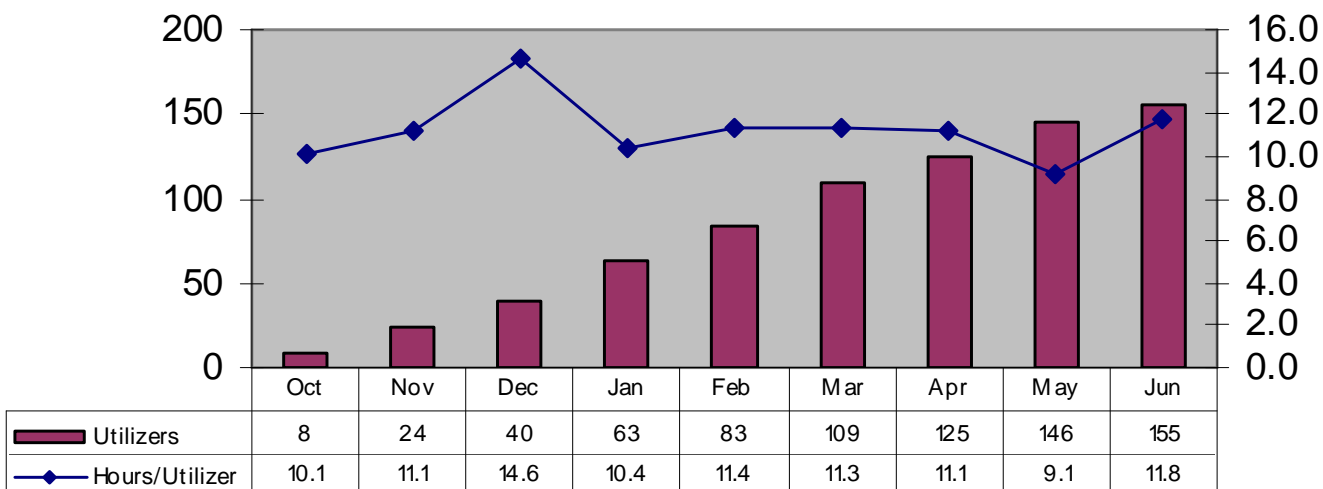
Chart 9





**Number of Members Using In-Home Behavioral Services
by Month with
Average Hours of Service Utilization Per Utilizer
October 1, 2009 through June 30, 2010**

Chart 10

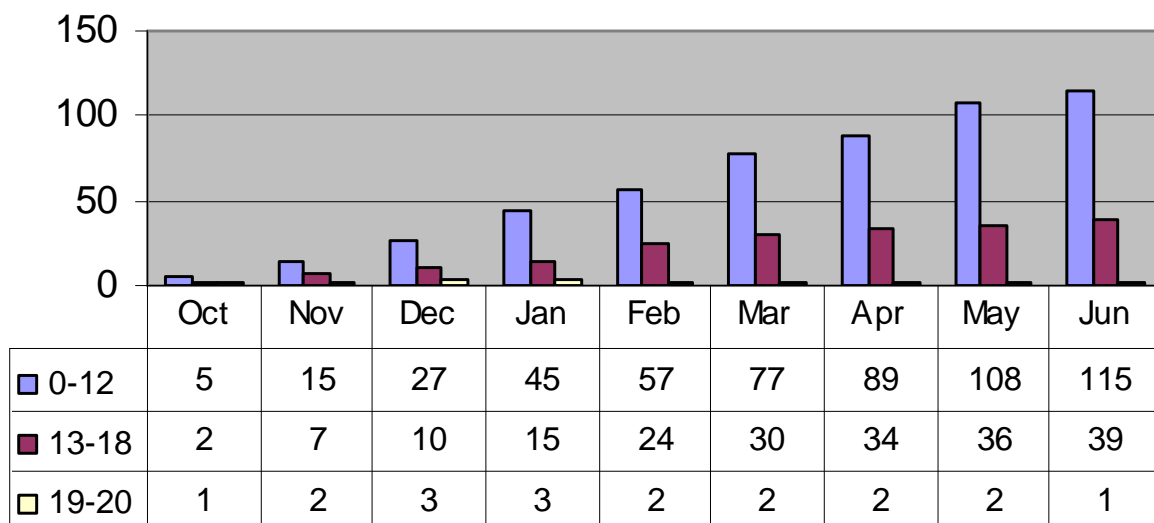




Number of Members Using In-Home Behavioral Services by Month and Age

October 1, 2009 through June 30, 2010

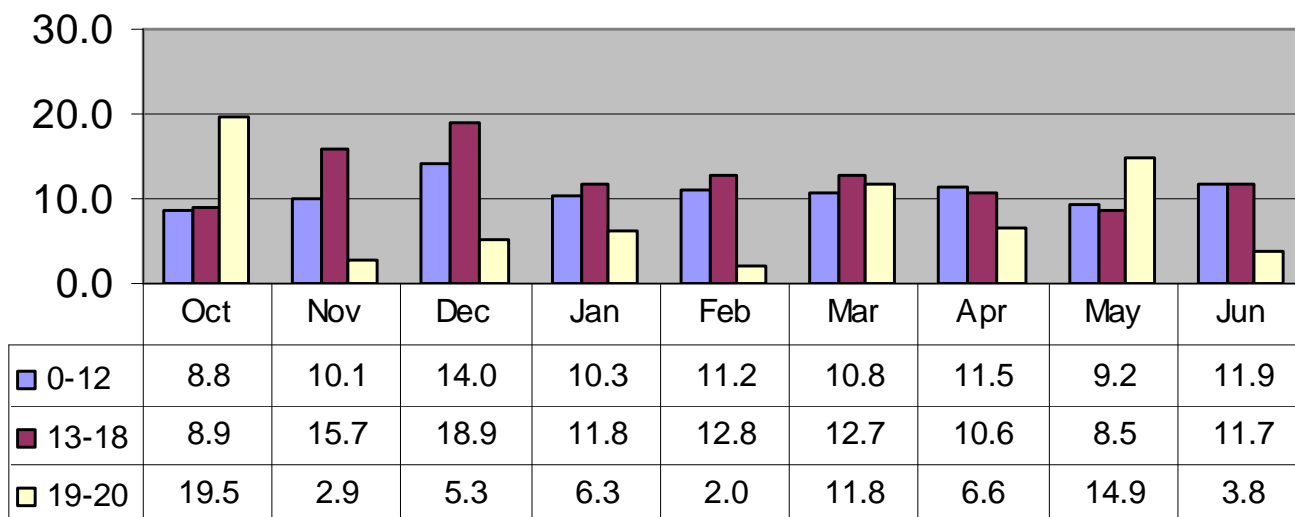
Chart 11





**Average Hours of Service Utilization
Per Member Using In-Home Behavioral Services
By Month and Age
October 1, 2009 through June 30, 2010**

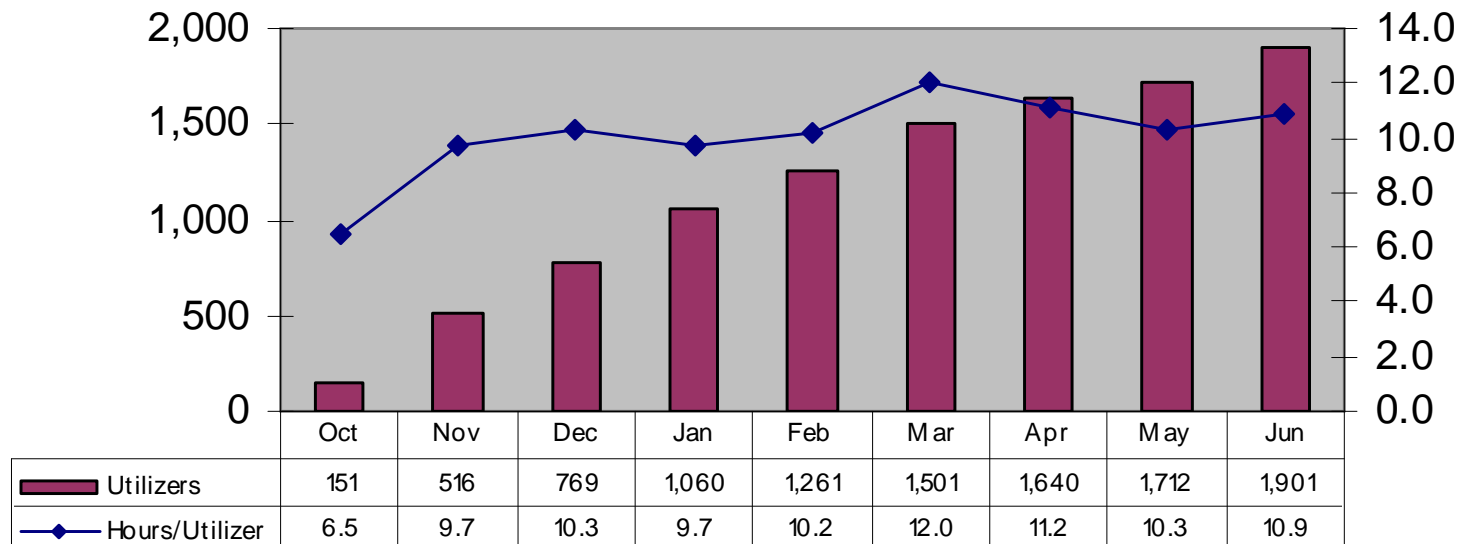
Chart 12





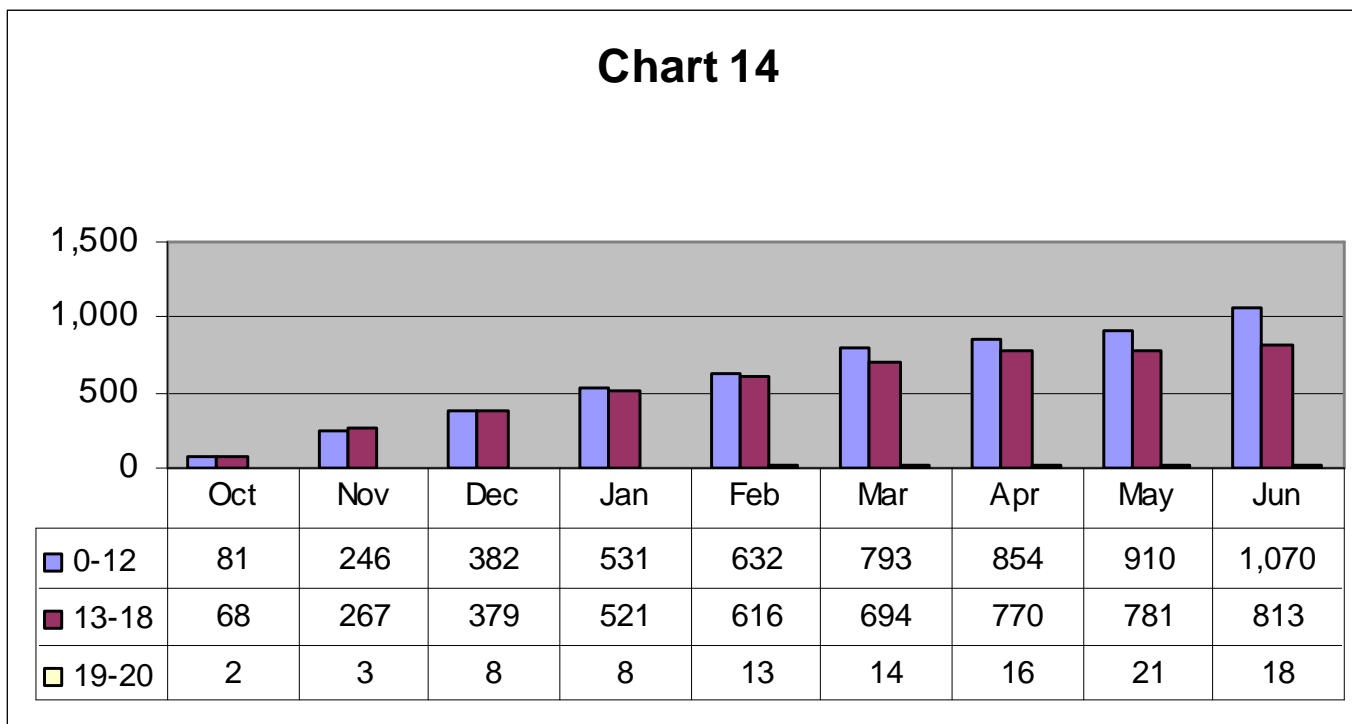
**Number of Members Using Therapeutic Mentoring
by Month with
Average Hours of Service Utilization Per Utilizer
October 1, 2009 through June 30, 2010**

Chart 13



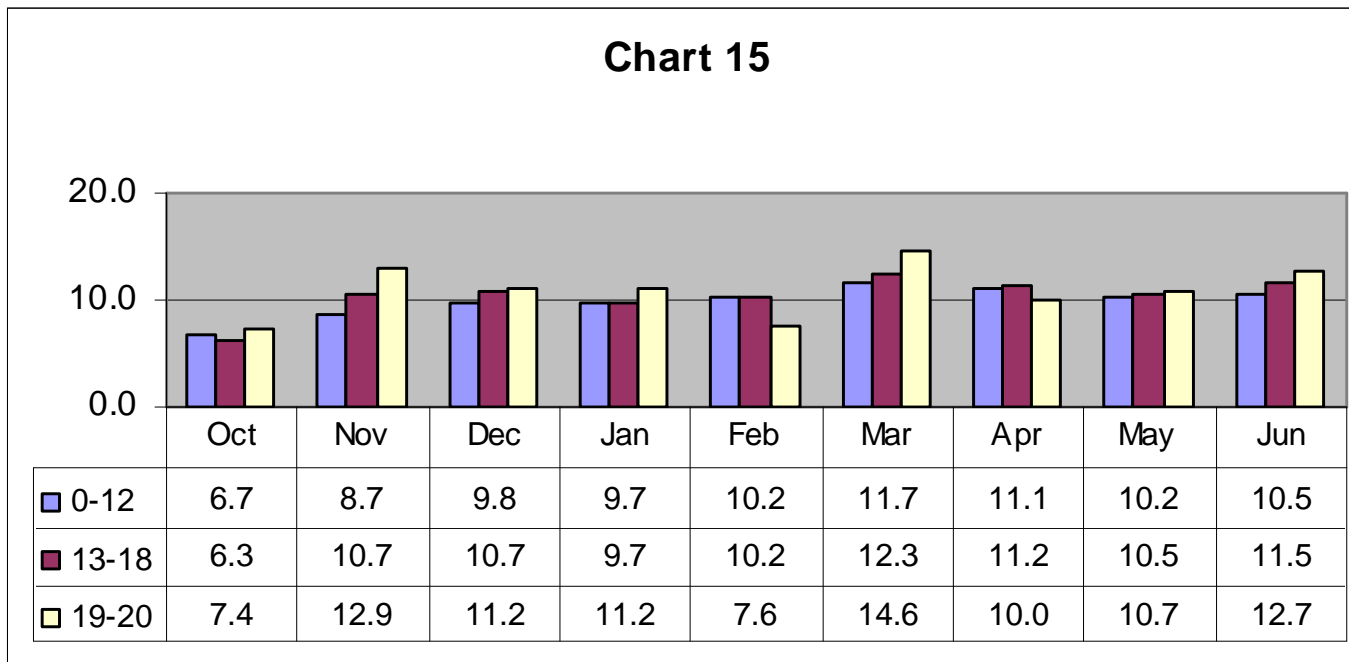


**Number of Members Using Therapeutic Mentoring
by Month and Age
October 1, 2009 through June 30, 2010**





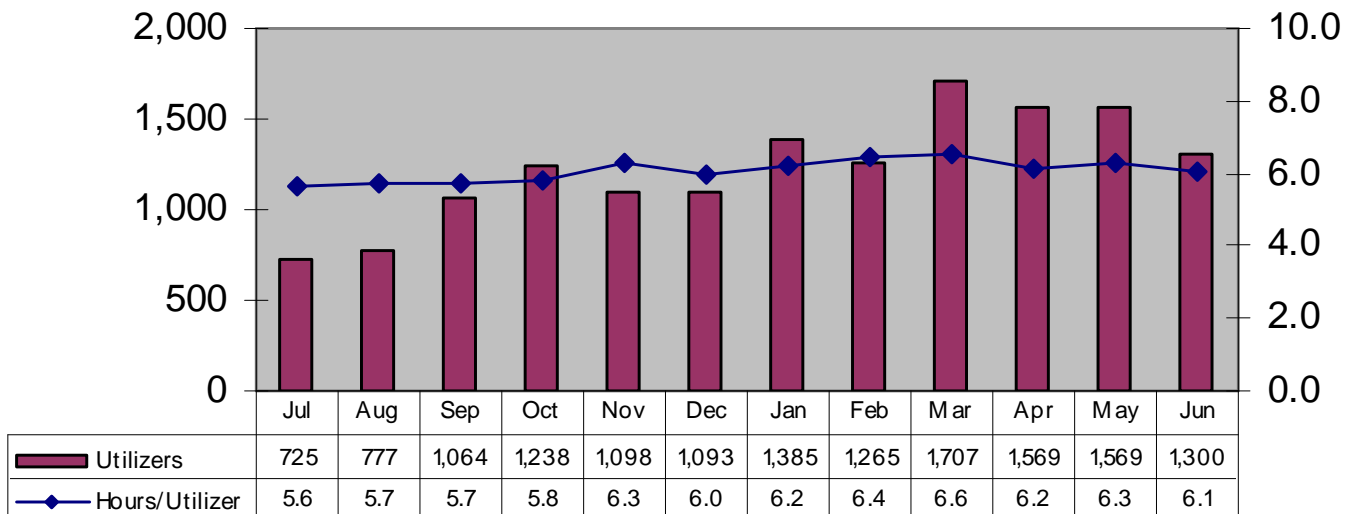
**Average Hours of Service Utilization
Per Member Using Therapeutic Mentoring
by Month and Age
October 1, 2009 through June 30, 2010**





**Number of Members Using Youth Mobile Crisis Intervention
by Month with
Average Hours of Service Utilization Per Utilizer
July 1, 2009 through June 30, 2010**

Chart 16

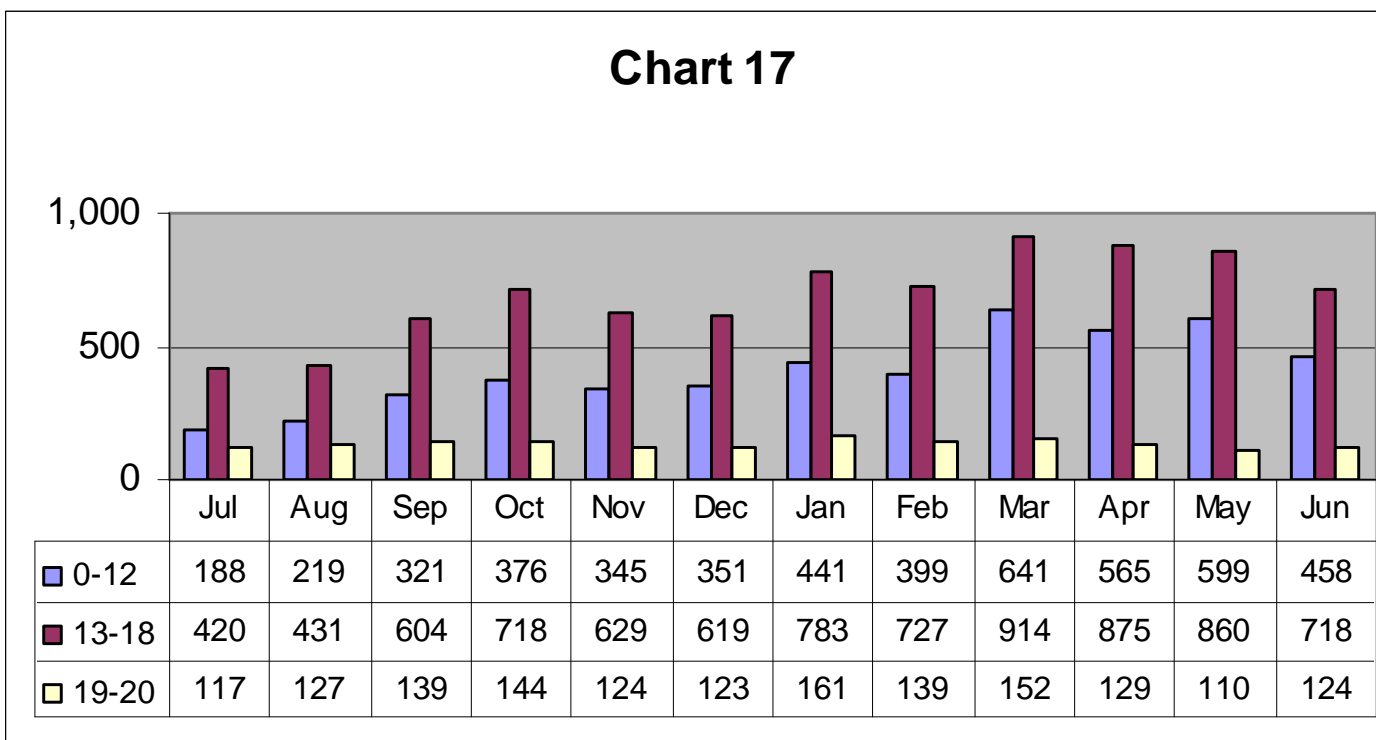




Number of Members Using Youth Mobile Crisis Intervention by Month and Age

July 1, 2009 through June 30, 2010

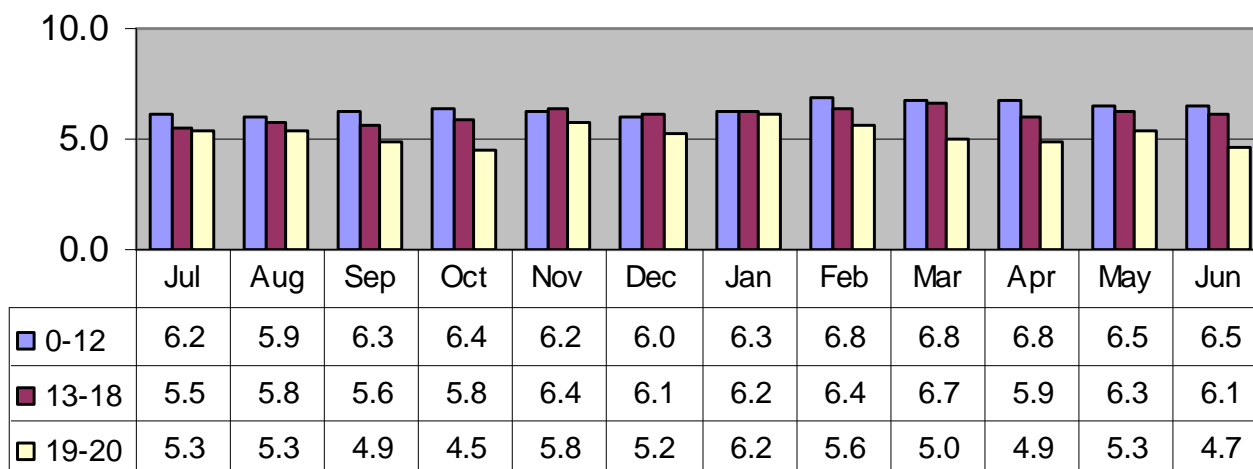
Chart 17





**Average Hours of Service Utilization
Per Member Using Youth Mobile Crisis Intervention
by Month and Age
July 1, 2009 through June 30, 2010**

Chart 18





**Percentage of Members Receiving Intensive Care Coordination
Accessing Other Behavioral Health Services
July 1, 2009 through June 30, 2010**

- Table 2 on the following page represents the percent of youth receiving ICC who also used other Behavioral Health Services in that month.
- This data is based on the managed care claims data on members for whom providers billed ICC and other behavioral health services during the month. The data is submitted to MassHealth by each managed care entity in the ICC Key Indicator Report, and combined by Office of Behavioral Health Analytic Staff.
- The estimated number of utilizers is slightly inflated because members who switch between health plans are counted more than once.
- The numbers do not exactly match the data in the other charts, because they are based on a different report, which are run on a different date.



**Percentage of Members Receiving Intensive Care Coordination
Accessing Other Behavioral Health Services
July 1, 2009 through June 30, 2010**

Table 2

	Number of ICC Utilizers	% Using 24 Hour Level Of Care	% Using Non-24 Hour Diversionary Services	% Using Outpatient Services	% Receiving FS&T Services	% Receiving MCI Services	% Receiving In-Home Therapy Services	% Receiving In-Home Behavioral Services	% Receiving Therapeutic Mentoring
Jul 2009	958	10.1%	5.2%	65.6%	60.2%	10.2%	NA	NA	NA
Aug 2009	1,429	10.8%	5.2%	63.5%	61.6%	9.4%	NA	NA	NA
Sep 2009	1,787	9.3%	5.5%	66.3%	66.9%	10.8%	NA	NA	NA
Oct 2009	2,164	10.4%	4.8%	67.1%	65.1%	8.9%	NA	0.3%	4.1%
Nov 2009	2,350	8.6%	4.2%	64.4%	67.1%	6.7%	21.8%	2.7%	11.1%
Dec 2009	2,598	7.0%	3.1%	64.9%	71.0%	5.9%	24.6%	3.6%	15.5%
Jan 2010	2,869	6.9%	3.4%	64.3%	70.3%	7.1%	25.5%	3.9%	20.2%
Feb 2010	3,087	6.5%	3.3%	63.2%	69.5%	6.8%	26.0%	4.6%	21.8%
Mar 2010	3,366	6.1%	2.9%	66.0%	72.3%	7.6%	27.0%	8.6%	23.2%
Apr 2010	3,474	6.1%	2.3%	64.5%	73.8%	7.2%	26.5%	8.5%	23.8%
May 2010	3,600	5.6%	2.3%	62.8%	73.5%	6.9%	25.1%	8.9%	24.2%
Jun 2010	3,739	5.0%	2.2%	61.5%	73.3%	5.7%	26.2%	9.4%	25.7%



Average Hours of Behavioral Health Services
Accessed by Members Receiving Intensive Care Coordination
July 1, 2009 through June 30, 2010

- Table 3 on the following page represents the average number of hours for services received by youth receiving ICC and other Behavioral Health Services in that month. Hours are calculated based on the number of units of service provided per utilizer. For 24 Hour Level of Care, which includes inpatient and Community Based Acute Treatment services, the data represents the average number of days of service.
- This data is based on the managed care claims data on members for whom providers billed ICC and other services during the month. The data is submitted to MassHealth by each managed care entity in the ICC Key Indicator report, and combined by Office of Behavioral Health Analytic Staff.
- The estimated number of utilizers is slightly inflated because members who switch between health plans are counted more than once.
- The numbers do not exactly match the data in the other charts, because they are based on a different report, which are run on a different date.



**Average Hours of Behavioral Health Services
Accessed by Members Receiving Intensive Care Coordination
July 1, 2009 through June 30, 2010**

Table 3

Mean Hours per ICC Utilizer per Month											Mean Days per ICC Utilizer per Month
FY2010	Number of ICC Utilizers	ICC - MA	ICC - Non MA	FS&T	In-Home Therapy - MA	In-Home Therapy - Non MA	In-Home Behavioral Therapy - MA	In-Home Behavioral Monitoring - Non MA	Therapeutic Mentoring	MCI	24 Hour Level of Care
Jul 2009	958	6.64	6.22	5.65	N/A	N/A	N/A	N/A	N/A	7.41	16.45
Aug	1,429	6.76	6.17	5.99	N/A	N/A	N/A	N/A	N/A	5.69	15.28
Sep	1,787	6.86	6.65	6.16	N/A	N/A	N/A	N/A	N/A	6.33	15.08
Oct	2,164	6.74	6.69	5.88	N/A	N/A	7.96	6.19	6.41	6.76	14.32
Nov	2,350	6.19	6.02	5.66	11.47	9.65	9.65	6.00	8.29	7.27	15.30
Dec	2,598	7.19	6.60	6.50	11.83	9.73	9.84	11.69	9.78	7.34	14.72
Jan 2010	2,869	7.31	7.14	6.79	11.15	9.86	8.11	6.27	9.89	7.14	14.28
Feb	3,087	7.07	7.10	6.35	11.40	10.06	8.74	6.99	10.31	7.03	15.12
Mar	3,366	8.38	8.57	7.73	13.23	11.47	7.88	7.88	12.13	7.60	14.86
Apr	3,474	8.23	8.65	7.67	12.08	10.34	8.59	5.76	11.46	6.88	16.41
May	3,600	7.81	8.04	7.32	11.53	9.89	6.75	5.59	10.55	7.25	16.13
Jun	3,739	8.27	8.45	7.56	11.88	10.55	7.56	8.21	11.10	7.74	15.20