

CBHI Service Utilization FY 2013

July 1, 2012, through June 30, 2013

Prepared by Office of Behavioral Health staff

10/10/2013





Number of Members Using CBHI Services

July 1, 2012, through June 30, 2013

- This CBHI service data is based on Managed Care claims data for members who have received the listed CBHI services. The data is submitted to MassHealth by each MassHealth managed care organization.
- MassHealth membership data is from the MassHealth data warehouse.
- Because there are different eligibility requirements for some CBHI services, the Table 1 reflects the appropriate denominator for each CBHI service.



Number of Members Using CBHI Services

July 1, 2012, through June 30, 2013

TABLE 1

Percent of MassHealth Membership, under 21, Receiving CBHI Services, July 1, 2012, through May 31, 2013

Average Number of MassHealth Members under 21 eligible *		513,036
*Includes members in Standard and CommonHealth		
CBHI Services	FY 2013 Number of Unique Utilizers	Percentage of Eligible Members
Intensive Care Coordination	9,095	1.77%
Family Support and Training	8,443	1.65%
In-Home Behavioral Services	2,067	0.40%
Therapeutic Mentoring	12,447	2.43%
Average Number of MassHealth Members under 21 eligible **		573,728
**Includes members in Standard, CommonHealth, and managed care enrolled members in Basic, Essential, and Family Assistance		
CBHI Services	FY 2013 Number of Unique Utilizers	Percentage of Eligible Members
In-Home Therapy	17,589	3.07%
Youth Mobile Crisis Intervention	12,738	2.22%
ALL CBHI Services	34,577	6.03%



Number of Members Using CBHI Services

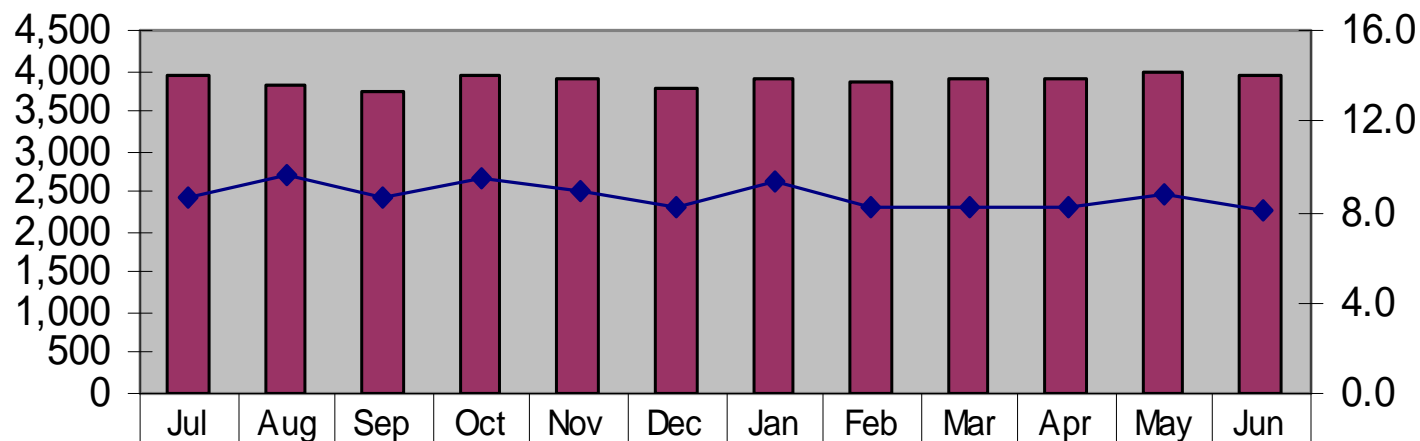
July 1, 2012, through June 30, 2013

- CBHI Service data on the following pages is provided through June 30, 2013.
- The data is for the following six CBHI services.
 - Intensive Care Coordination
 - Family Support and Training
 - In-Home Therapy
 - In-Home Behavioral Services
 - Therapeutic Mentoring
 - Youth Mobile Crisis Intervention
- Each of the services has three charts,
 - The first chart is a summary report showing both estimated utilizers and average billed service hours per utilizer.
 - The second chart shows average billed service hours by age group.
 - The third chart shows service utilizers by age group.
- This data is based on Managed Care claims on members for whom providers have billed the CBHI service.
- The data is submitted to MassHealth by each managed care entity in the CBHI Cost and Utilization Reports, and combined by Office of Behavioral Health Analytic Staff.
- The estimated number of utilizers is slightly inflated because members who switch between health plans are counted more than once.



**Number of Members Using Intensive Care Coordination
by Month with
Average Hours of Service Utilization Per Utilizer
July 1, 2012, through June 30, 2013**

Hours and Utilizers - Intensive Care Coordination

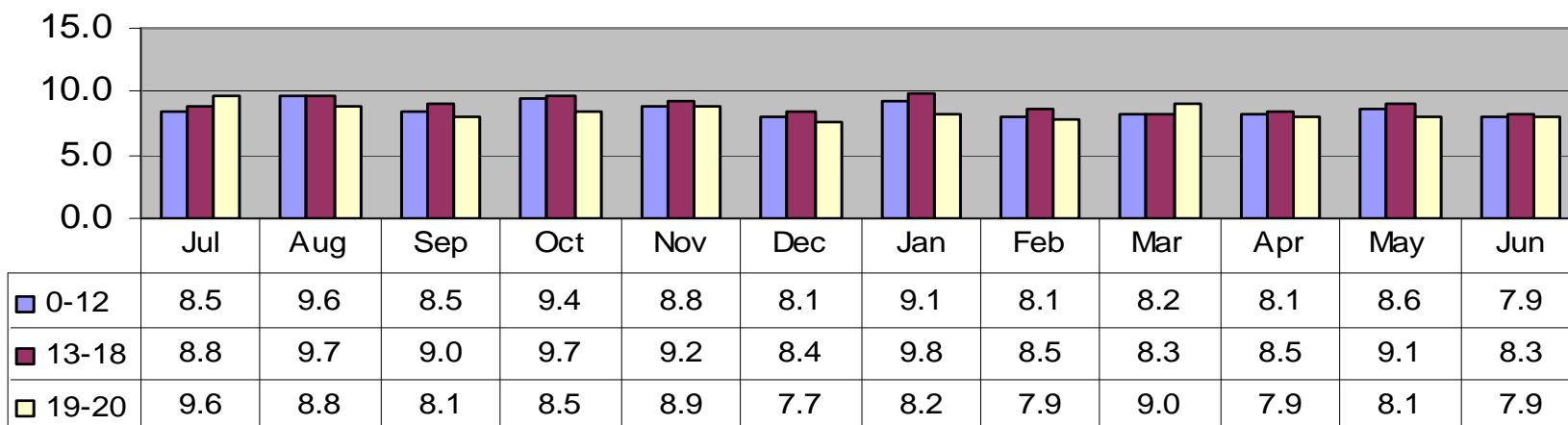


 # of Utilizers	3,960	3,841	3,761	3,931	3,891	3,779	3,916	3,855	3,892	3,912	3,982	3,942
 Hours Per Utilizer	8.7	9.6	8.7	9.5	9.0	8.2	9.4	8.2	8.2	8.3	8.8	8.1



**Number of Members Using Intensive Care Coordination
by Month and Age with
Average Hours of Service Utilization Per Utilizer
July 1, 2012, through June 30, 2013**

**Hours per Utilizer by Age and Month - Intensive Care
Coordination**

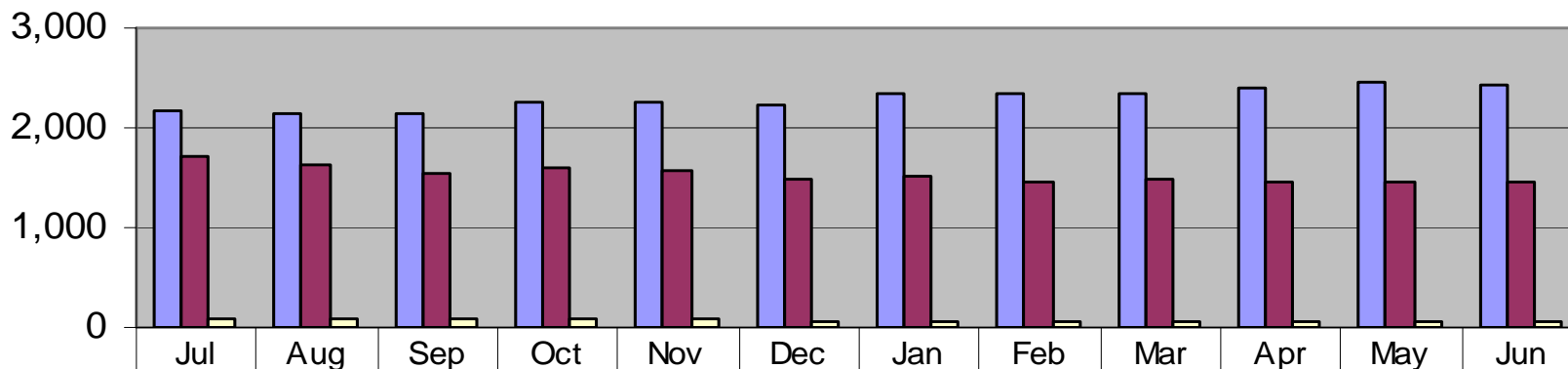




Number of Members Using Intensive Care Coordination by Month and Age

July 1, 2012, through June 30, 2013

of Utilizers by Age and Month - Intensive Care Coordination

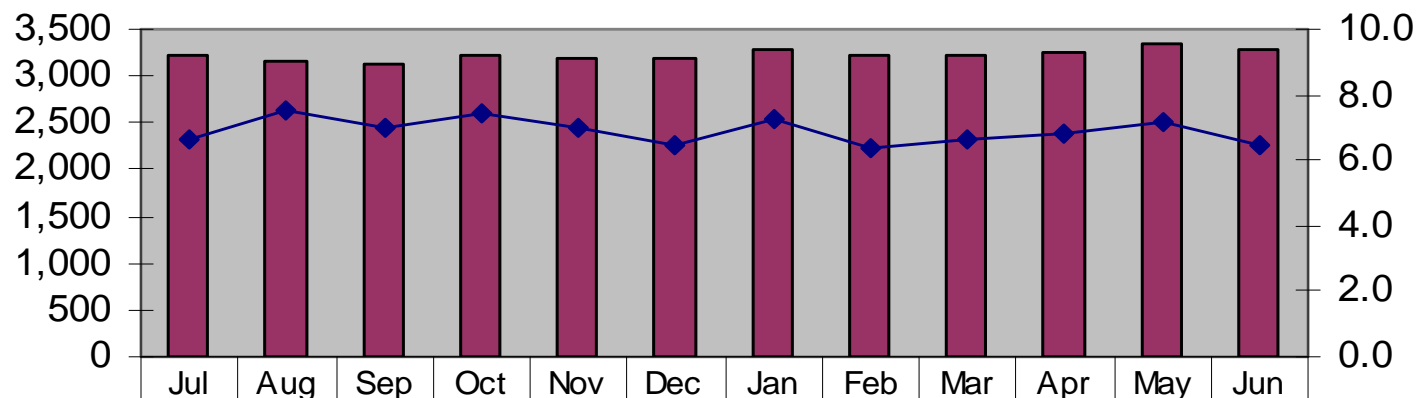


0-12	2,171	2,140	2,138	2,243	2,245	2,215	2,332	2,329	2,356	2,389	2,464	2,429
13-18	1,701	1,617	1,544	1,610	1,571	1,493	1,516	1,462	1,477	1,470	1,470	1,460
19-20	88	84	79	78	75	71	68	64	59	53	48	53



**Number of Members Using Family Support and Training
by Month with
Average Hours of Service Utilization Per Utilizer
July 1, 2012, through June 30, 2013**

Hours and Utilizers - Family Support and Training

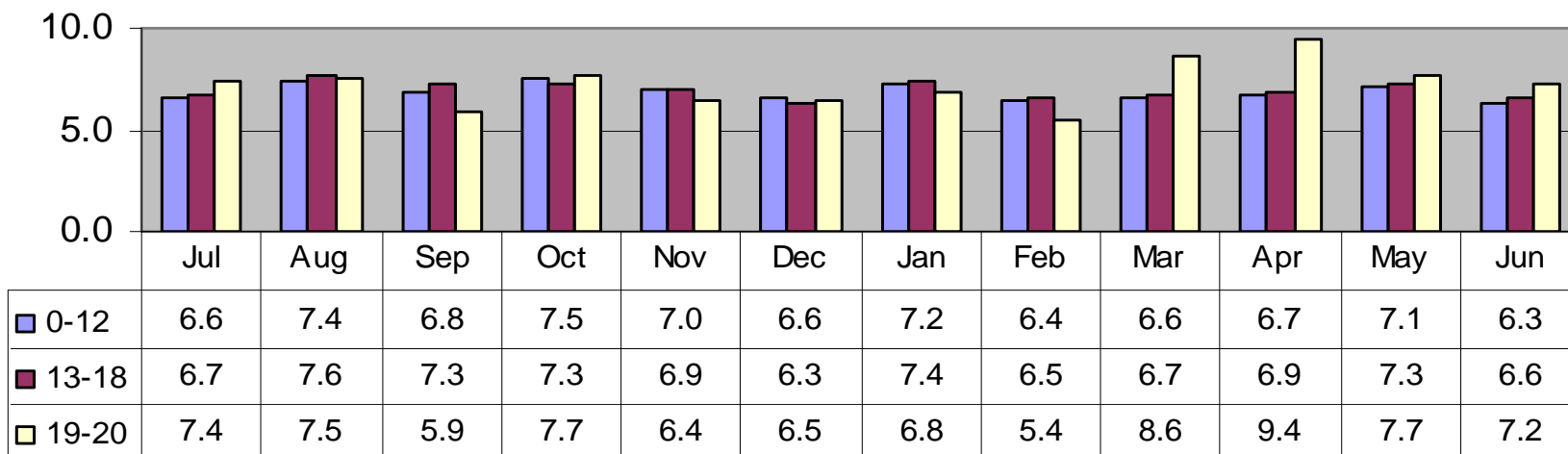


 # of Utilizers	3,209	3,152	3,122	3,236	3,196	3,179	3,273	3,216	3,217	3,253	3,353	3,294
◆ Hours Per Utilizer	6.7	7.5	7.0	7.4	7.0	6.5	7.3	6.4	6.6	6.8	7.1	6.4



**Members Using Family Support and Training
by Month and Age with
Average Hours of Service Utilization Per Utilizer
July 1, 2012, through June 30, 2013**

Hours per Utilizer by Age and Month - Family Support and Training

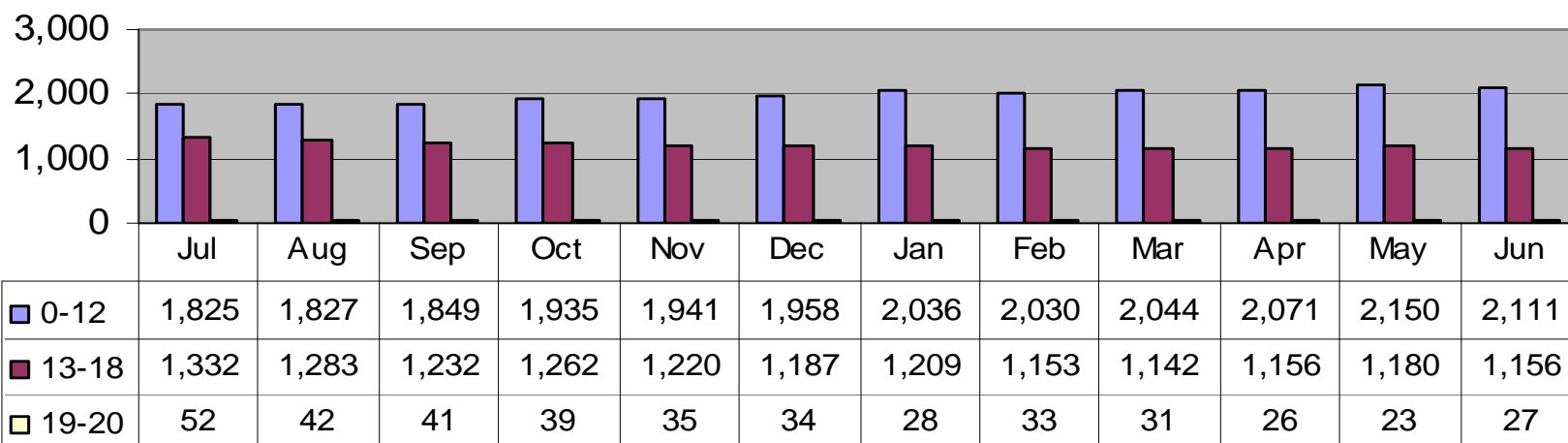




Number of Members Using Family Support and Training by Month and Age

July 1, 2012, through June 30, 2013

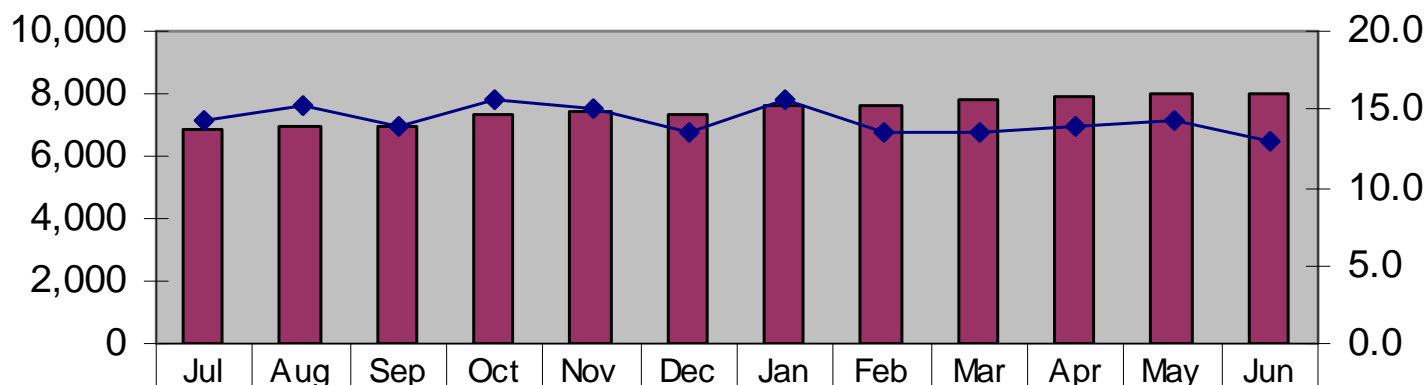
of Utilizers by Age and Month - Family Support and Training





**Number of Members Using In-Home Therapy
by Month with
Average Hours of Service Utilization Per Utilizer
July 1, 2012, through June 30, 2013**

Hours and Utilizers - In-Home Therapy

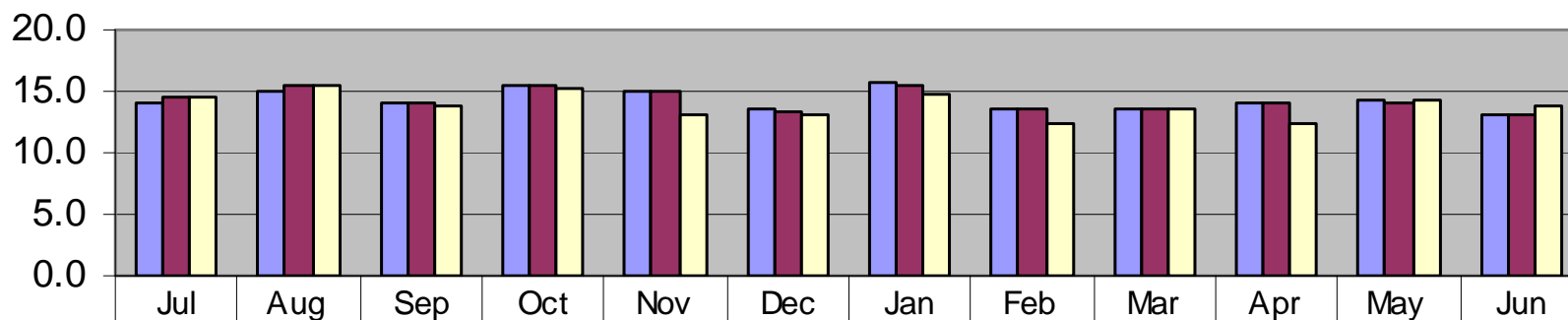


 # of Utilizers	6,879	6,964	6,922	7,295	7,381	7,353	7,589	7,592	7,773	7,868	7,967	8,004
 Hours Per Utilizer	14.3	15.2	14.0	15.5	15.0	13.5	15.7	13.6	13.5	14.0	14.3	13.0



**Number of Members Using In-Home Therapy
by Month and Age with
Average Hours of Service Utilization Per Utilizer
July 1, 2012, through June 30, 2013**

Hours per Utilizer by Age and Month - In-Home Therapy



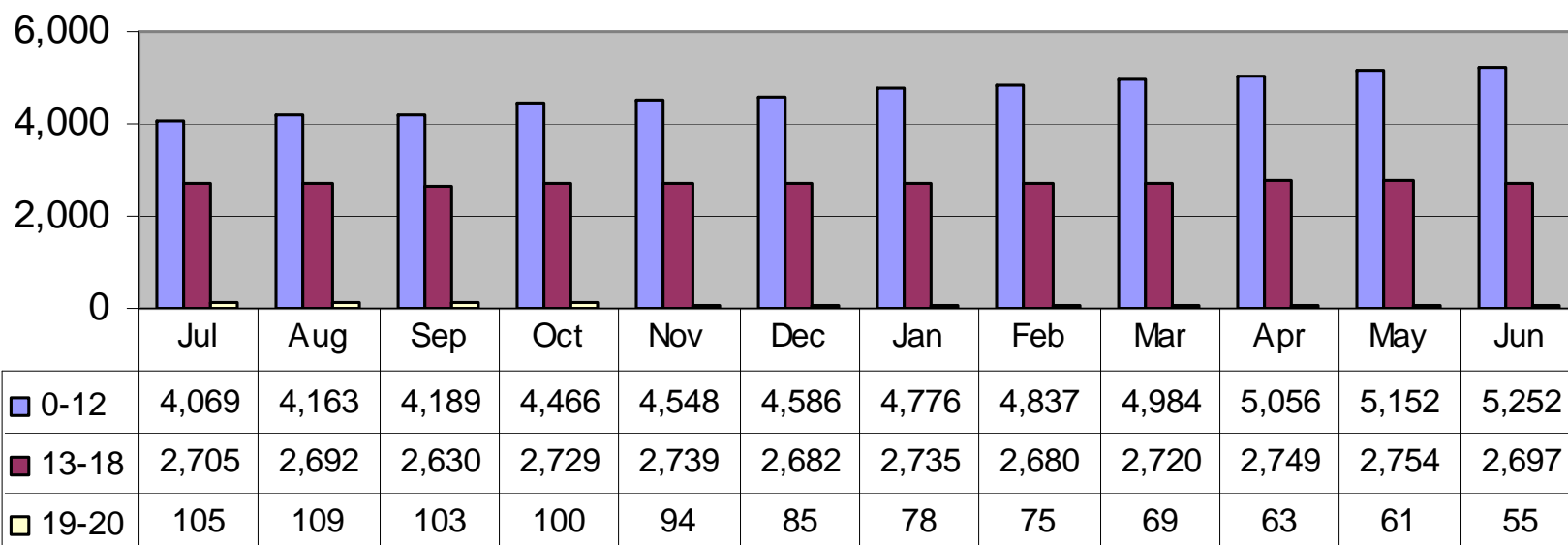
0-12	14.1	15.1	14.0	15.5	14.9	13.6	15.8	13.5	13.5	14.0	14.4	13.0
13-18	14.5	15.4	14.0	15.6	15.1	13.4	15.6	13.6	13.5	13.9	14.1	13.0
19-20	14.4	15.4	13.8	15.3	13.2	13.1	14.8	12.4	13.6	12.5	14.3	13.8



Number of Members Using In-Home Therapy by Month and Age

July 1, 2012, through June 30, 2013

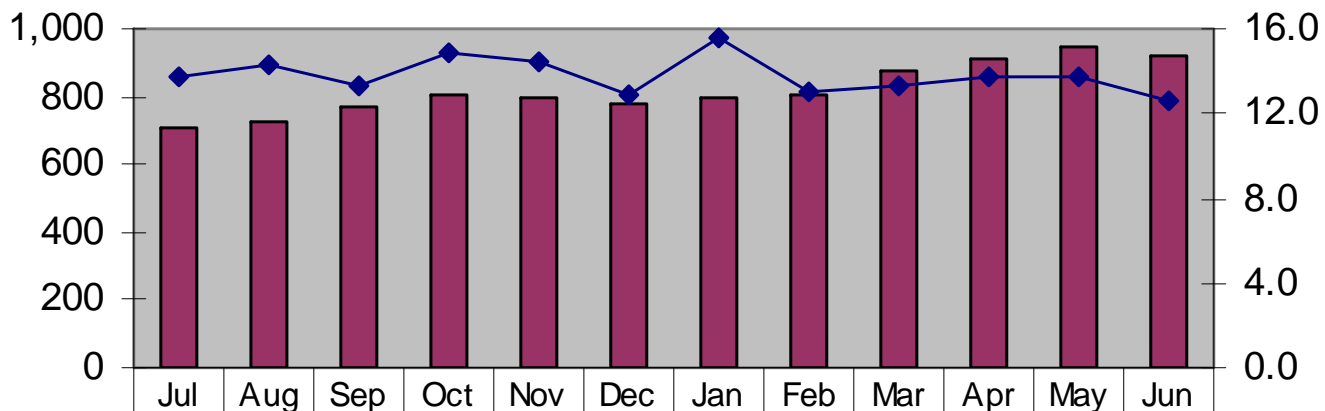
of Utilizers by Age and Month - In-Home Therapy





**Number of Members Using In-Home Behavioral Services
by Month with
Average Hours of Service Utilization Per Utilizer
July 1, 2012, through June 30, 2013**

Hours and Utilizers - In-Home Behavioral Services

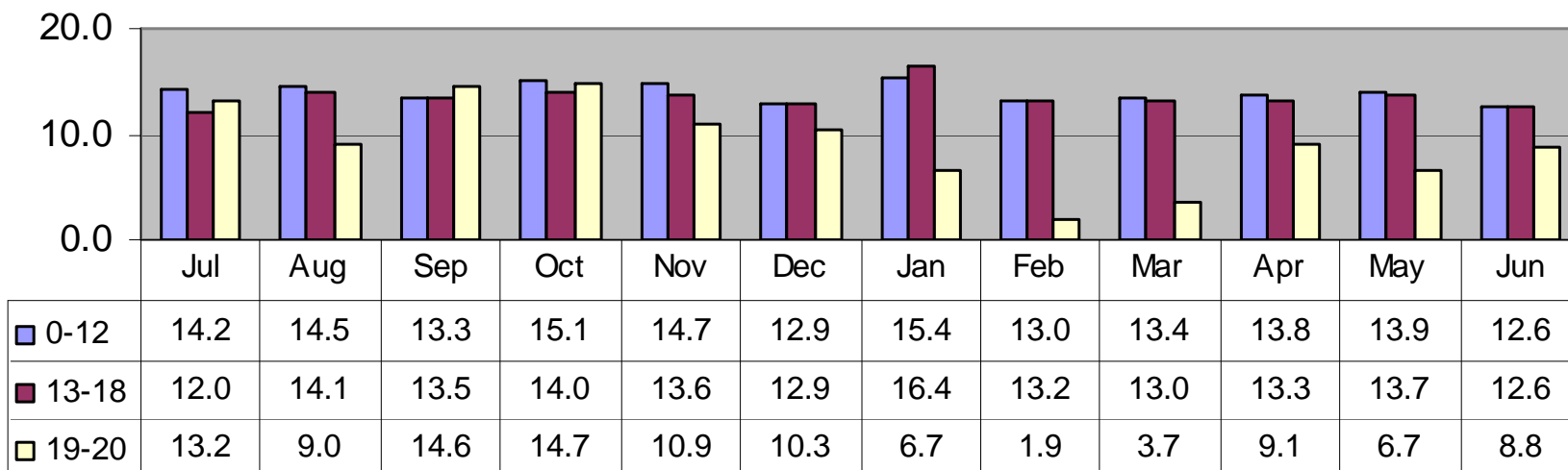


 # of Utilizers	705	729	772	806	797	783	799	806	879	912	947	920
◆ Hours Per Utilizer	13.7	14.4	13.4	14.9	14.5	12.9	15.6	13.0	13.3	13.7	13.8	12.6



**Number of Members Using In-Home Behavioral Services
by Month and Age with
Average Hours of Service Utilization Per Utilizer
July 1, 2012, through June 30, 2013**

Hours per Utilizer by Age and Month - In-Home Behavioral Services

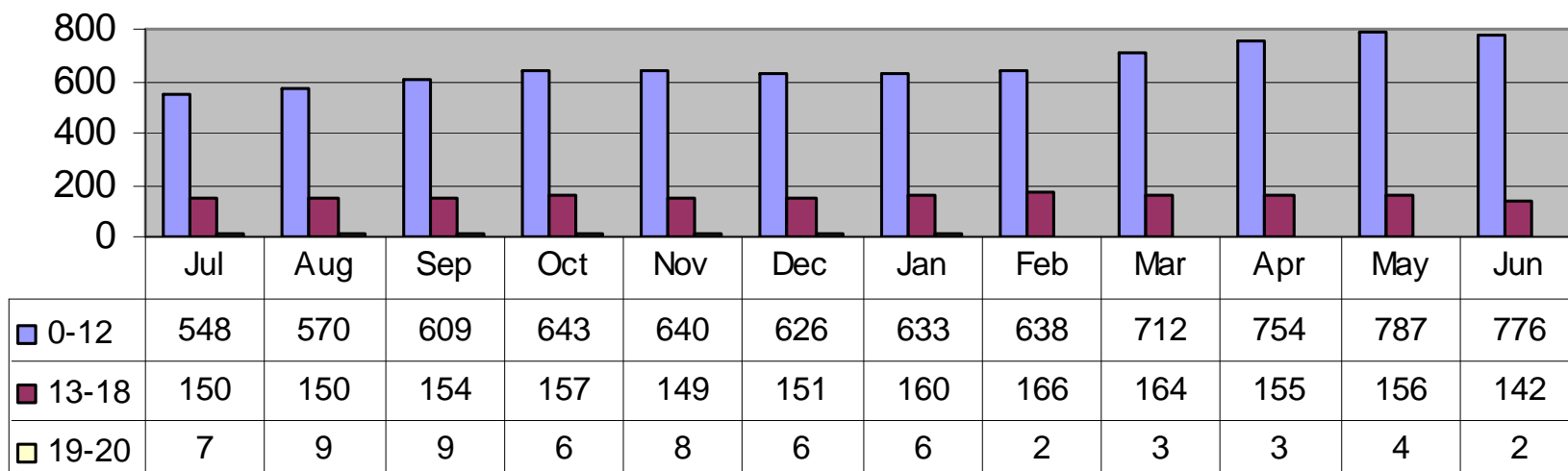




Number of Members Using In-Home Behavioral Services by Month and Age

July 1, 2012, through June 30, 2013

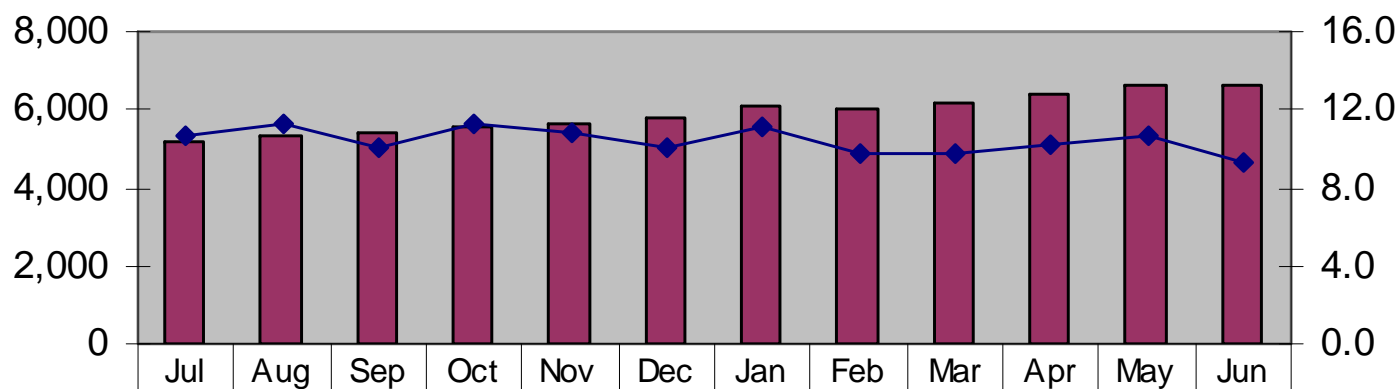
of Utilizers by Age and Month - In-Home Behavioral Services





**Number of Members Using Therapeutic Mentoring
by Month with
Average Hours of Service Utilization Per Utilizer
July 1, 2012, through June 30, 2013**

Hours and Utilizers - Therapeutic Mentoring

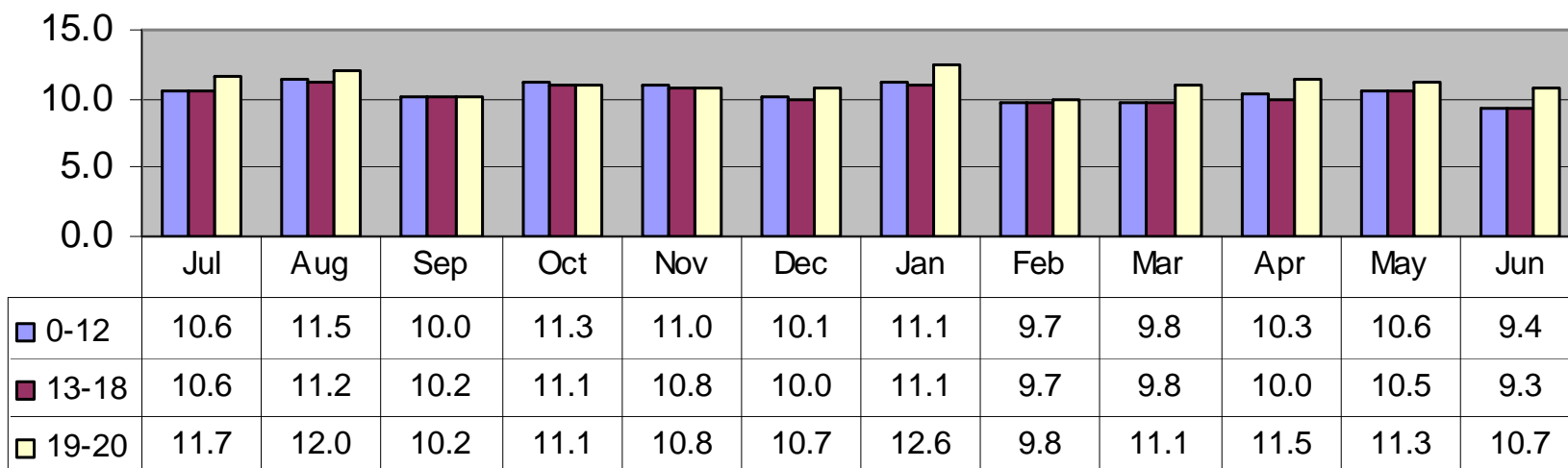


 # of Utilizers	5,181	5,321	5,413	5,582	5,649	5,766	6,094	6,044	6,188	6,424	6,629	6,605
◆ Hours Per Utilizer	10.7	11.4	10.1	11.2	10.9	10.1	11.1	9.7	9.8	10.2	10.6	9.3



**Number of Members Using Therapeutic Mentoring
by Month and Age with
Average Hours of Service Utilization Per Utilizer
July 1, 2012, through June 30, 2013**

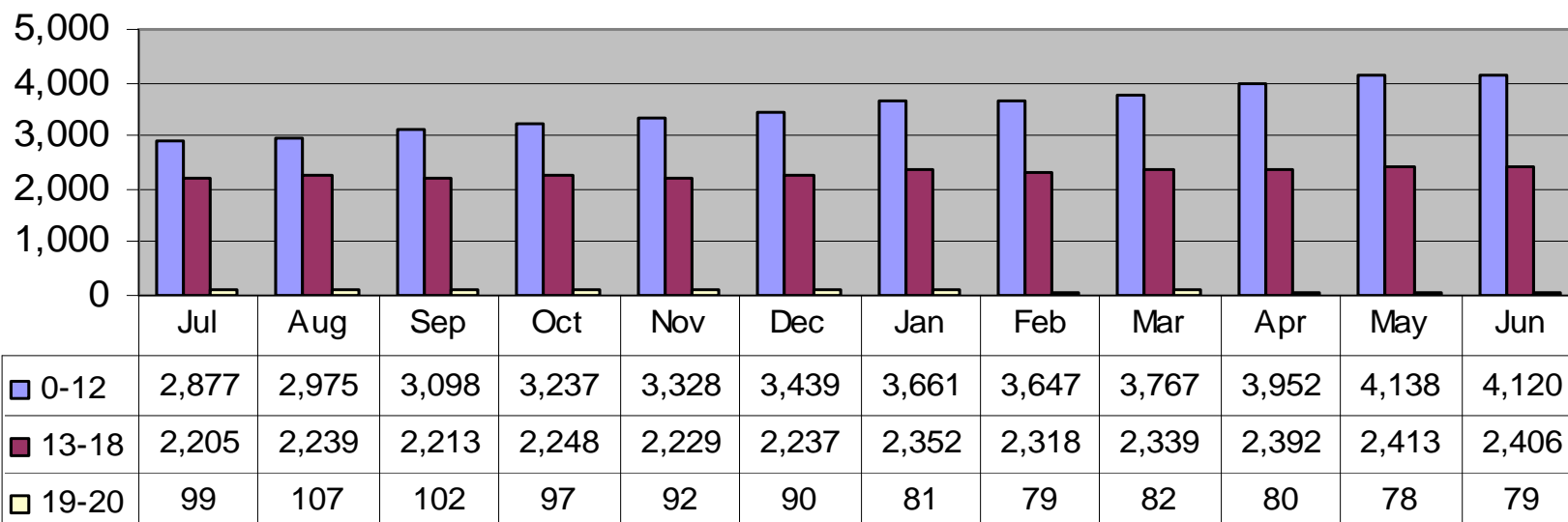
**Hours per Utilizer by Age and Month -
Therapeutic Mentoring**





**Number of Members Using Therapeutic Mentoring
by Month and Age**
July 1, 2012, through June 30, 2013

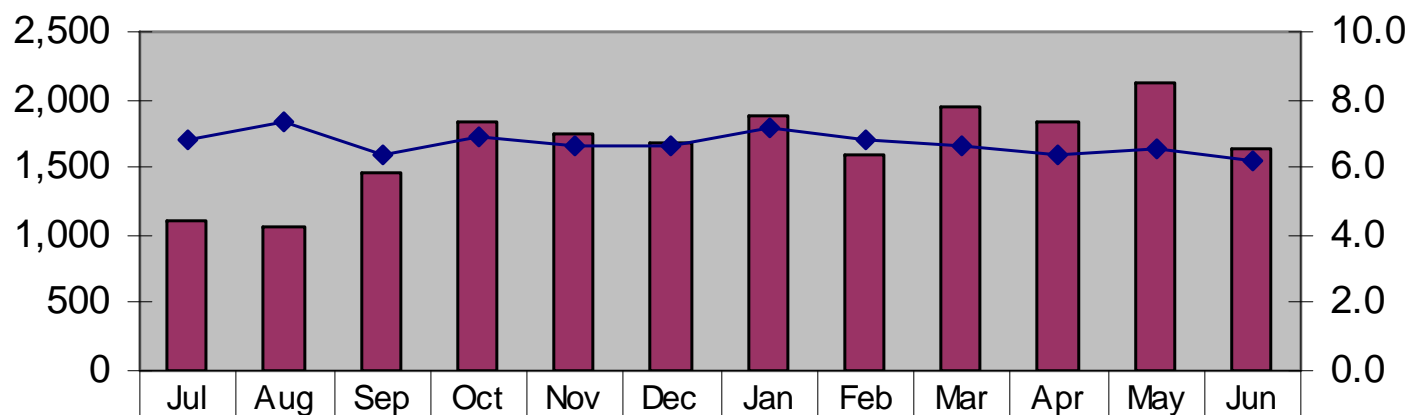
of Utilizers by Age and Month - Therapeutic Mentoring







**Number of Members Using Youth Mobile Crisis Intervention
by Month with
Average Hours of Service Utilization Per Utilizer
July 1, 2012, through June 30, 2013**

Hours and Utilizers - Youth Mobile Crisis Intervention

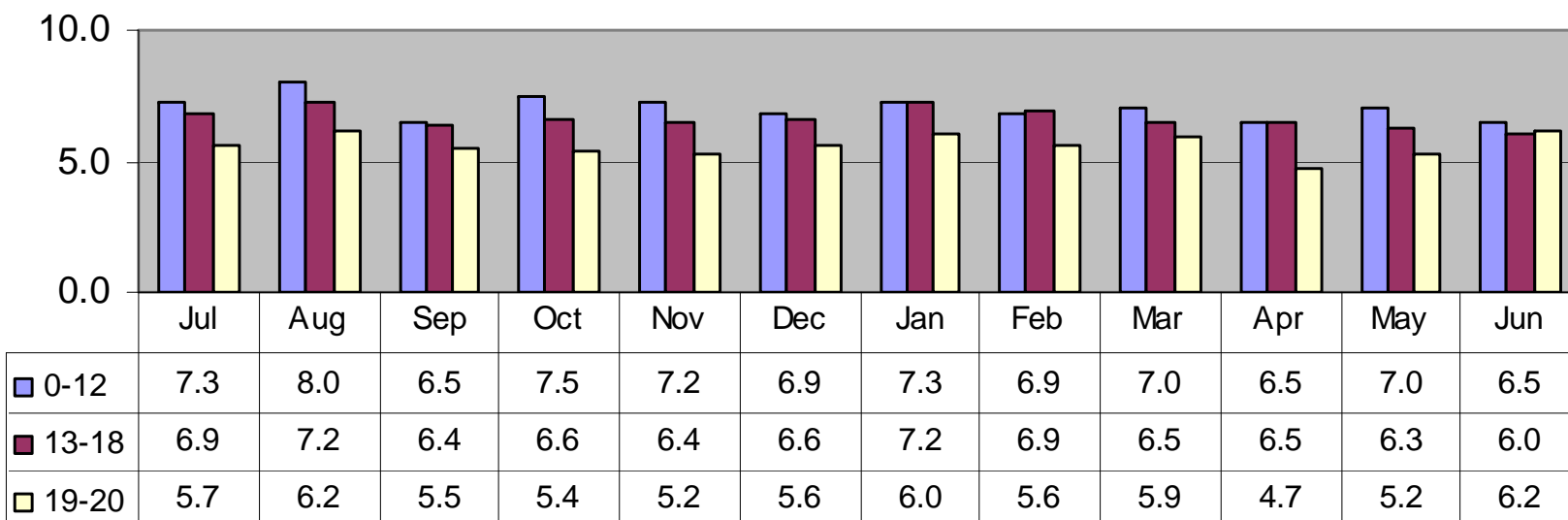


 # of Utilizers	1,105	1,072	1,455	1,835	1,738	1,672	1,882	1,584	1,939	1,845	2,113	1,633
 Hours Per Utilizer	6.8	7.3	6.3	6.9	6.6	6.6	7.1	6.8	6.6	6.4	6.5	6.2



**Number of Members Using Youth Mobile Crisis Intervention
by Month and Age with
Average Hours of Service Utilization Per Utilizer
July 1, 2012, through June 30, 2013**

Hours per Utilizer by Age and Month - Youth Mobile Crisis Intervention

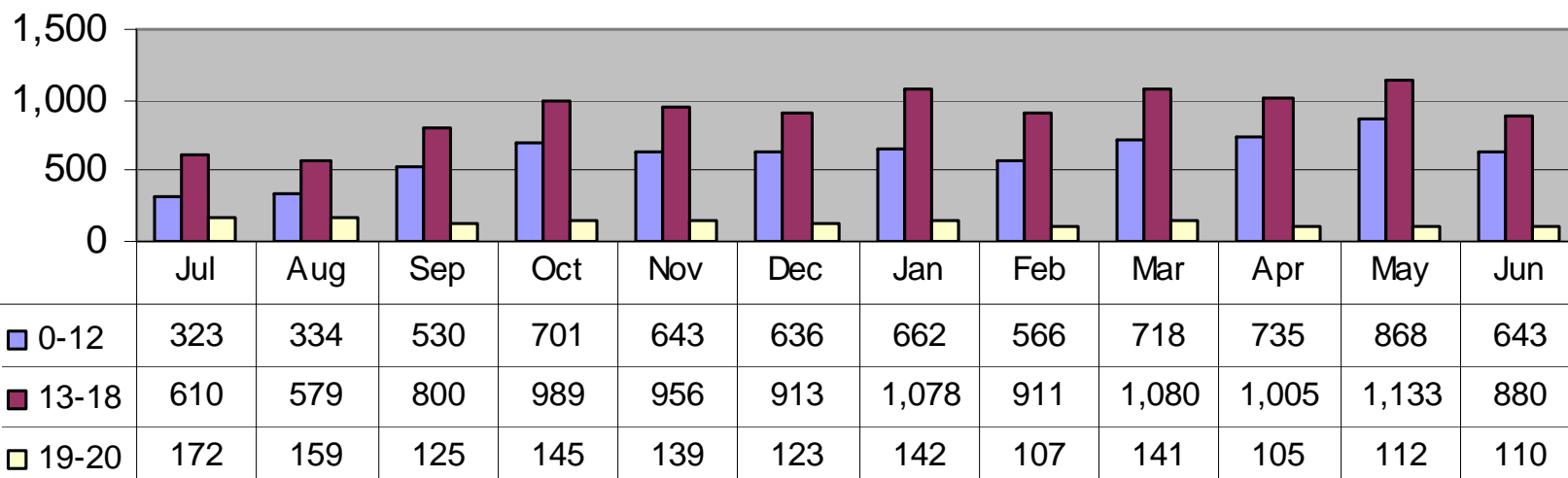




Number of Members Using Youth Mobile Crisis Intervention by Month and Age

July 1, 2012, through June 30, 2013

of Utilizers by Age and Month - Youth Mobile Crisis Intervention





Percentage of Members Receiving Intensive Care Coordination Accessing Other Behavioral Health Services

July 1, 2012, through June 30, 2013

- Table 2 represents the percent of youth receiving ICC who also used other behavioral health services in that month.
- This data is based on the Managed Care claims data on members for whom providers billed ICC and other behavioral health services during the month. The data is submitted to MassHealth by each managed care entity in the ICC Key Indicator Report, and combined by Office of Behavioral Health Analytic Staff.
- The estimated number of utilizers is slightly inflated because members who switch between health plans are counted more than once.
- The numbers do not exactly match the data in the other charts, because they are based on different reports, which are run on a different date.



**Percentage of Members Receiving Intensive Care Coordination
Accessing Other Behavioral Health Services**
July 1, 2012, through June 30, 2013

Percentage of ICC Utilizers Accessing Other Behavioral Health Services									
FY2013	Number of ICC Utilizers	% Using 24 Hour Level of Care	% Using Non-24 Hour Diversionary services	% Using Outpatient Services	% Receiving FS&T	% Receiving MCI Services	% Receiving In-Home Therapy	% Receiving In-Home Behavioral Services	% Receiving Therapeutic Mentoring
July 2012	3,956	4.9%	1.8%	57.0%	75.9%	5.5%	32.7%	8.9%	40.1%
Aug	3,840	5.2%	2.2%	58.4%	77.4%	6.0%	33.5%	9.0%	41.8%
Sept	3,758	5.4%	1.8%	57.3%	77.7%	6.9%	33.4%	9.4%	43.1%
Oct	3,927	6.3%	2.1%	59.2%	77.6%	8.0%	33.3%	9.3%	40.9%
Nov	3,891	5.7%	1.9%	59.7%	77.1%	7.9%	32.9%	9.2%	41.0%
Dec	3,775	5.6%	1.9%	57.7%	80.0%	6.7%	31.9%	8.8%	41.1%
Jan 2013	3,915	5.9%	1.9%	57.4%	77.9%	8.4%	32.7%	8.4%	41.5%
Feb	3,855	5.7%	1.9%	56.4%	77.4%	5.7%	32.7%	8.7%	40.5%
Mar	3,892	5.4%	1.9%	58.1%	76.5%	8.2%	32.7%	8.9%	39.1%
Apr	3,909	5.4%	1.8%	58.8%	76.9%	7.8%	32.2%	9.2%	40.2%
May	3,979	6.2%	1.9%	58.5%	78.0%	8.3%	32.2%	9.3%	41.3%
June	3,928	5.1%	1.8%	55.4%	76.6%	7.0%	30.9%	8.5%	40.5%



Average Hours of Behavioral Health Services
Accessed by Members Receiving Intensive Care Coordination
July 1, 2012, through June 30, 2013

- Table 3 represents the average number of hours for services received by youth receiving ICC and other behavioral health services in that month. Hours are calculated based on the number of units of service provided per utilizer. For 24-hour level of care, which includes inpatient and Community Based Acute Treatment services, the data represents the average number of days of service.
- This data is based on the Managed Care claims data on members for whom providers billed ICC and other services during the month. The data is submitted to MassHealth by each managed care entity in the ICC Key Indicator report, and combined by Office of Behavioral Health Analytic Staff.
- The estimated number of utilizers is slightly inflated because members who switch between health plans are counted more than once.
- The numbers do not exactly match the data in the other charts, because they are based on different reports, which are run on a different date.



**Average Hours of Behavioral Health Services
Accessed by Members Receiving Intensive Care Coordination
July 1, 2012, through June 30, 2013**

Average Hours of Behavioral Health Services Accessed Per ICC Utilizer

Mean Hours per ICC Utilizer per Month											Mean Days per ICC Utilizer per Month
FY2013	Number of ICC Utilizers	ICC - MA	ICC - Non MA	FS&T	In-Home Therapy - MA	In-Home Therapy - non-MA	In-Home Behavioral Therapy - MA	In-Home Behavioral Monitoring - non-MA	Therapeutic Mentoring	MCI	24-Hour Level of Care
Jul 2012	3,956	8.13	8.59	6.72	11.57	9.12	9.73	8.99	11.11	8.34	14.25
Aug	3,840	8.96	9.52	7.48	12.14	9.55	10.63	9.34	11.90	8.65	15.09
Sep	3,758	8.03	8.67	7.05	11.30	8.63	9.20	9.53	10.49	7.12	13.91
Oct	3,927	8.96	9.35	7.42	12.39	9.64	10.47	9.70	11.64	8.54	13.99
Nov	3,891	8.49	8.81	7.01	11.98	9.18	9.70	9.71	11.32	8.20	13.98
Dec	3,775	7.68	8.14	6.55	10.39	8.26	9.22	8.44	10.32	7.92	14.16
Jan 2013	3,915	8.63	9.17	7.34	12.61	9.57	10.26	9.39	11.52	8.34	13.64
Feb	3,855	7.74	8.17	6.47	10.85	8.34	7.90	8.04	9.82	8.29	12.88
Mar	3,892	7.70	8.15	6.70	10.83	8.31	8.71	9.04	9.96	7.77	14.21
Apr	3,909	7.72	8.07	6.85	10.94	8.23	9.02	8.88	10.32	7.46	13.27
May	3,979	8.09	8.78	7.24	11.09	8.29	9.05	8.85	10.91	7.61	13.30
Jun	3,928	7.44	8.15	6.52	10.34	7.86	8.41	7.84	9.49	6.91	13.62