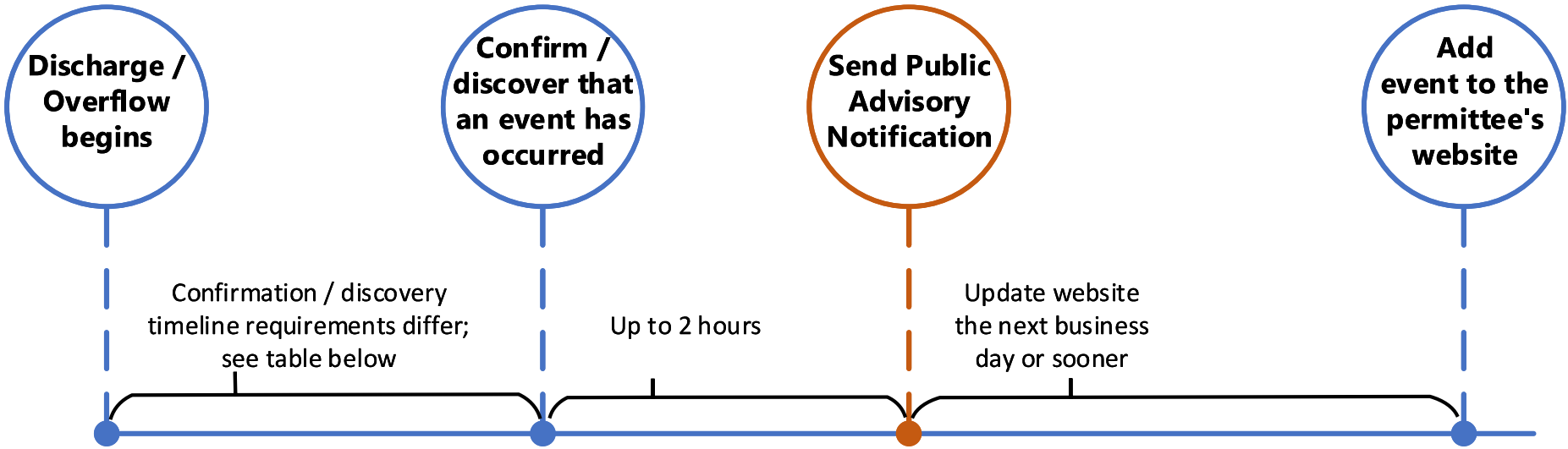


Public Notification Timeline (see 314 CMR 16.04(5))

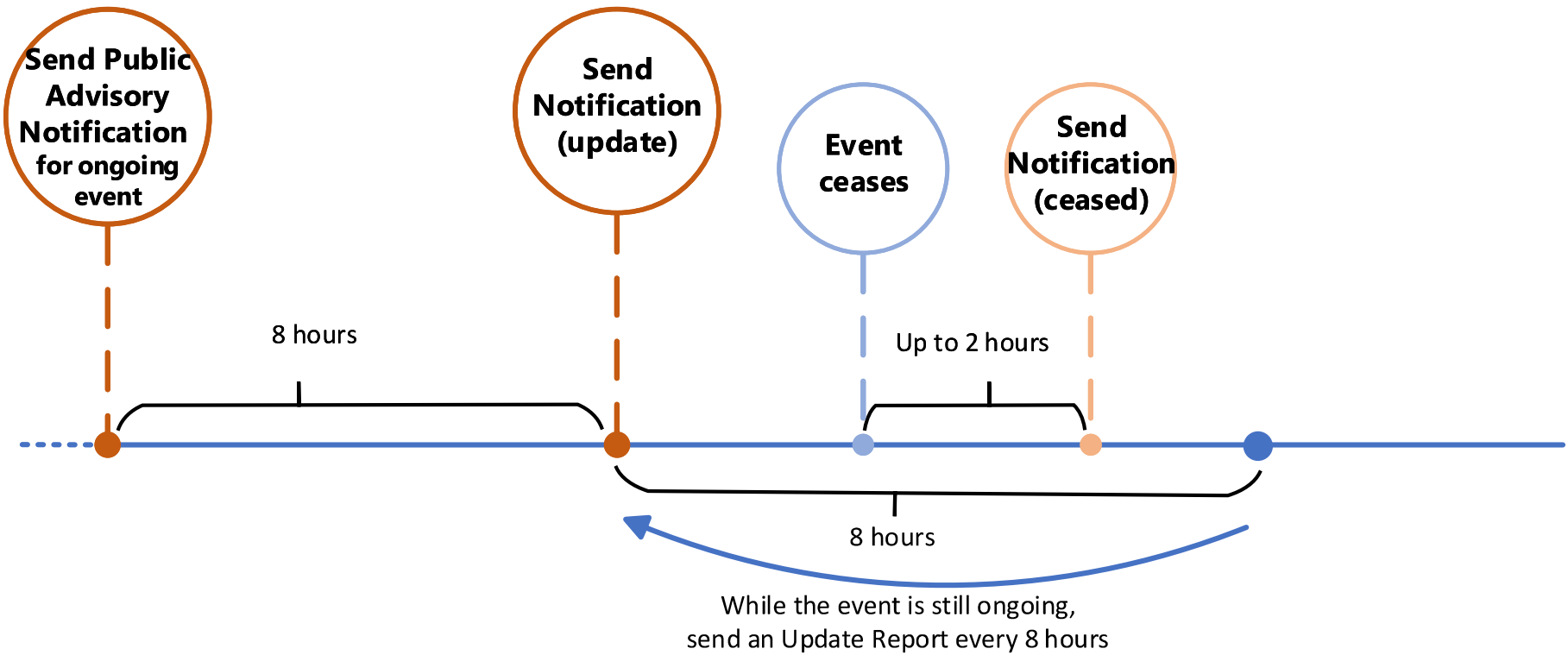
Any timeline extensions must be requested and approved by the Commissioner.



Event Type	Details	Confirmation / discovery timeline
CSO	Monitored with metering & 24/7 staffing	After the meter reading is sent, you have up to 2 hours to confirm that the event has occurred
CSO	Monitored with metering, no 24/7 staffing	After the meter reading is sent, you have up to 4 hours to confirm that the event has occurred
CSO	Monitored with modeling	Discovery occurs when the model predicts that a CSO is occurring
SSO		After receiving relevant information, you have up to 4 hours to confirm that the event has occurred
Partially Treated	Due to diverting a portion of the flow around a treatment process	Discovery occurs when the permittee begins diverting flow
Partially Treated	Due to process failure	Discovery occurs when the permittee becomes aware of the discharge

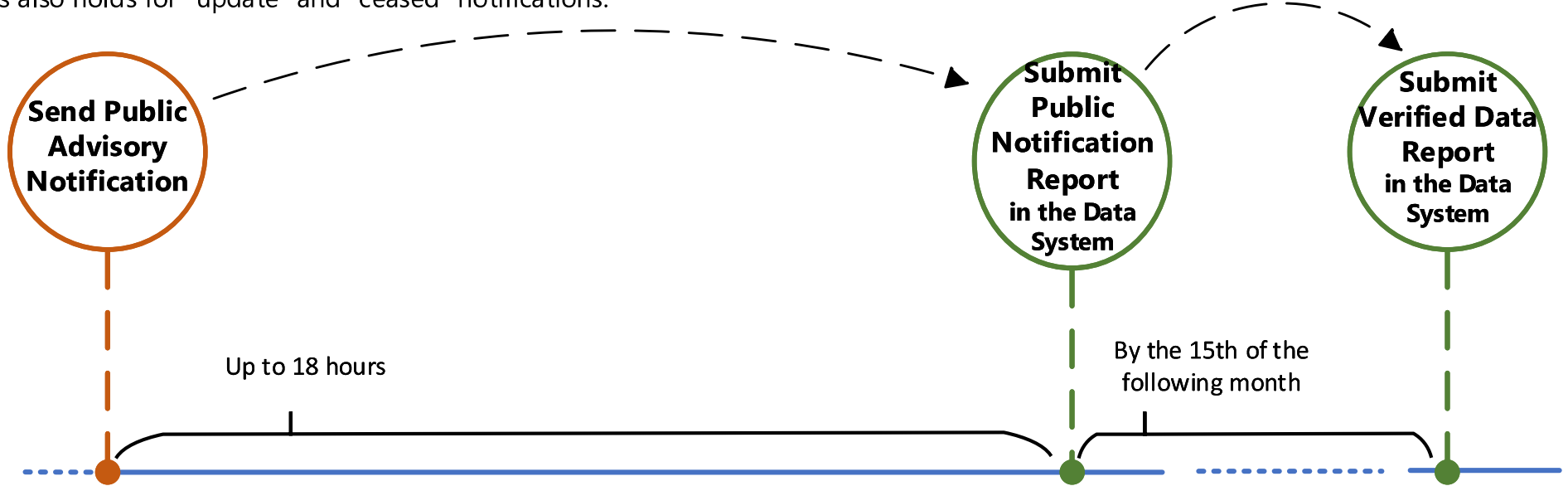
Update Report timeline (see 314 CMR 16.04(7) and 16.04(8))

If an event is ongoing at the time of the initial Public Advisory Notification, issue Public Advisory Notification update(s).



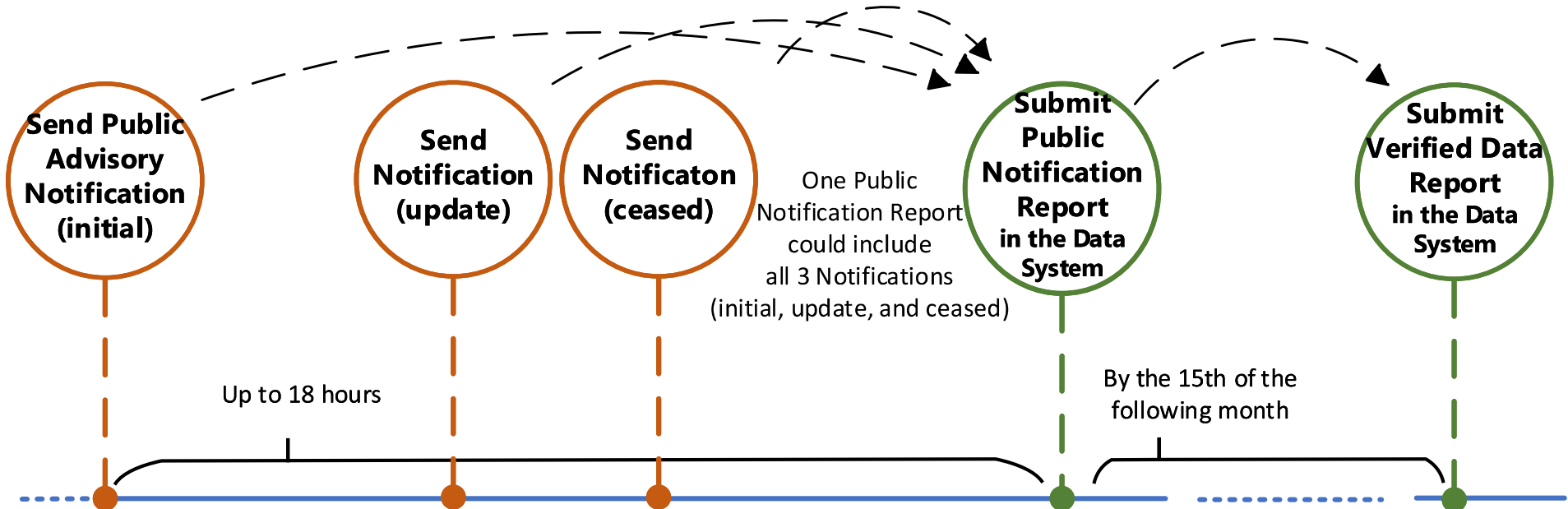
Data System timeline (see 314 CMR 16.07)

Every time you send out a notification, you have 18 hours to report that notification into the Data System. This also holds for "update" and "ceased" notifications.



For events that are ongoing at the time the Public Advisory Notification is sent:

You have the option to bundle multiple notifications into one report. Below is an example.



Retraction Timeline (see 314 CMR 16.04(9))

If you discover that no discharge occurred within 48 hours of issuing the Public Advisory Notification, send a retraction.

If you discover that no discharge occurred more than 48 hours after issuing the Public Advisory Notification, you are not required to send a retraction.

