

2022 CHARLES E. SHANNON COMMUNITY SAFETY INITIATIVE BROCKTON

Funded Partners: 24 Hr. Power Inc., Boys & Girls Clubs of Metro South, Brockton Police Department, Health Imperatives, Kids Konnect, Life Transforming Leadership Foundation, Luminosity Behavioral Services, Inc., MassHire/YouthWorks, Safe Corners, Strategies for Youth

Funded by the Office of Grants and Research, a state agency that is part of the Executive Office of Public Safety and Security, the Charles E. Shannon Community Safety Initiative (Shannon) is modeled after the Office of Juvenile Justice and Delinquency Prevention's Comprehensive Gang Model. Shannon is a multi-sector approach used to address a community's gang and youth violence problem. Each community receiving Shannon funding demonstrates the presence of risk factors for youth and gang violence. Shannon participants must be between the ages of 10-24 years.

Strategies, Outcomes, and Funding Allocation

Total Funding: \$718,400.00

Strategies	Outcomes		Funding Allocation
Case Management, Street Outreach, or Intervention	128 Received Case Management Services	325 Received Street Outreach Services	\$372,072.36
Education & Employment	40 Participated in Employment Programs	168 Participated in Education Programs	\$89,941.96
Positive Youth Development & Recreation	162 Participated in Recreation Programs	213 Participated in Youth Development Programs	\$197,751.90
Suppression	11 Hot Spot Patrols Completed	33 Law Enforcement Home Visits	\$58,633.78

Youth Risk Assessments

68%
LOW-RISK* Youth in danger of engaging in risky behavior or gang activity.

21%
MODERATE-RISK* Youth exposed to the same risk factors as low-risk youth, as well as additional risk factors such as truancy.

11%
HIGH-RISK* Youth who are perpetrators or victims of shooting or stabbing violence, and/or are known gang members.

* % of youth assessed for risk

Success Highlight

"The program received a referral for a high school youth that had been a victim of gang and gun violence. The program enrolled him in case management and began working with him and his family in and out of the school, as well as the other young people involved to deter further retaliation. The program assisted this youth in earning his driver's license and applying for employment. After our case manager recommended him to a local business for an after-school employment opportunity, this participant was not only offered the job but has been given additional hours and responsibilities. He has remained free from conflict, away from gang activity, and will graduate this year!"
~Safe Corners (Old Colony YMCA)

Massachusetts Executive Office of Public Safety and Security, Secretary Terrence Reidy
Office of Grants and Research, Executive Director Kevin Stanton

To learn more visit: <https://www.mass.gov/service-details/shannon-community-safety-initiative-csi>

Community Risk Factors

Massachusetts

Brockton

Total Population (2021/2022 Estimates)	6,981,974	105,446
Population Lives in Poverty	10.4%	11.5%
Unemployment Rate (Nov. 2021 – Nov. 2022)	4%	5.3%
Total School Population (2021-22)	957,774	18,192
Low-Income	42.3%	73.3%
High School Dropout Rate (2020-21)	1.5%	3%

Sources: www.census.gov/quickfacts; profiles.doe.mass.edu; www.lmi.dua.eol.mass.gov/LMI/LaborForceAndUnemployment

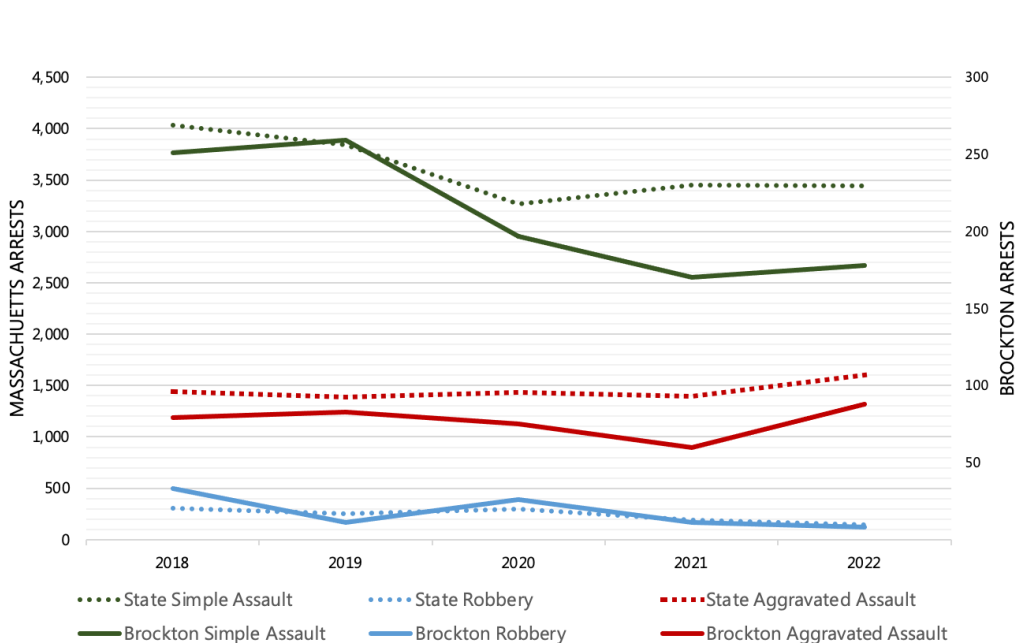
Gang Activity in Brockton

17
Street Gangs

300
Active Gang
Members

Gang Violence in the city of Brockton includes many drug and firearm-related offenses. Shannon-eligible youth between ages 10-24 are being recruited to perform simple tasks like purchasing food, acting as a lookout, renting cars/ hotel rooms, and storing illegal contraband.

5-Year Crime Trends for Offenses Committed by Youth Ages 10-24, 2018-2022



Changes in Crime for Young People Ages 10-24, 2018-2022

- Simple assaults in...
- Massachusetts decreased 15%
 - Brockton decreased 29%
- Robberies in...
- Massachusetts decreased 52%
 - Brockton decreased 76%
- Aggravated assaults in...
- Massachusetts increased 11%
 - Brockton increased 11%

Source: National Incident Based Reporting System (NIBRS)

Information contained in this report is from funding applications, reports supplied by the site, MA Department of Elementary and Secondary Education, US Census, MA Executive Office of Labor and Workforce Development, and Office of Grants and Research / Research Policy and Analysis Division. Special thanks to the Statewide Research Partner, Northeastern University, and the Crime and Justice Policy Lab of the University of Pennsylvania, for preparing this brief.