

2022 CHARLES E. SHANNON COMMUNITY SAFETY INITIATIVE HOLYOKE/CHICOPEE

Funded Partners: Chicopee Boys & Girls Club, Chicopee Police Department, Hampden County Sheriff's Department, Holyoke Boys & Girls Club, Holyoke Community College, Holyoke Police Department, MassHire Holyoke, Pa'lante, The Center for Resilience

Funded by the Office of Grants and Research, a state agency that is part of the Executive Office of Public Safety and Security, the Charles E. Shannon Community Safety Initiative (Shannon) is modeled after the Office of Juvenile Justice and Delinquency Prevention's Comprehensive Gang Model. Shannon is a multi-sector approach used to address a community's gang and youth violence problem. Each community receiving Shannon funding demonstrates the presence of risk factors for youth and gang violence. Shannon participants must be between the ages of 10-24 years.

Strategies, Outcomes, and Funding Allocation

Total Funding: \$566,355.26

Strategies	Outcomes		Funding Allocation
Community Mobilization	4,315 Community Members Attended Events, Meetings, & Presentations	63 Community Events, Meetings, & Presentations Held	\$170,281.22
Education & Employment	21 Participated in Employment Programs	19 Participated in Education Programs	\$119,252.20
Positive Youth Development & Recreation	964 Participated in Recreation Programs	1,069 Participated in Youth Development Programs	\$179,635.90
Suppression	130 Hot Spot Patrols Completed	10 Gang Members/High-Impact Players Arrested	\$97,185.94

Youth Risk Assessments

- 16% **LOW-RISK*** Youth in danger of engaging in risky behavior or gang activity.
- 37% **MODERATE-RISK*** Youth exposed to the same risk factors as low-risk youth, as well as additional risk factors such as truancy.
- 47% **HIGH-RISK*** Youth who are perpetrators or victims of shooting or stabbing violence, and/or are known gang members.

* % of youth assessed for risk

Success Highlight

"One youth joined Pa'lante as a sophomore in high school. While a Peer Leader, she shared the difficulties of living with a volatile single father and she began to share her fear that her father would kick her out on her birthday. Her adult ally in Pa'lante connected her with resources both inside the school district and at the city and state levels. She helped the youth discern and navigate her housing options and supported her in moving in with a friend's family as well as with college applications. The youth's fellow Peer Leaders continued to help her stay motivated and come to school. Despite her own challenges, she remained a committed Peer Leader, helping design and facilitate a suicide prevention workshop with underclassmen, participating in weekly program meetings, and continuing to earn high grades. She went on to become the valedictorian of her class. Her adult ally took her on a college tour, met with financial aid, and supported her in signing up for a summer bridge program."

~Pa'lante

Massachusetts Executive Office of Public Safety and Security, Secretary Terrence Reidy
Office of Grants and Research, Executive Director Kevin Stanton

To learn more visit: <https://www.mass.gov/service-details/shannon-community-safety-initiative-csi>

Community Risk Factors

Massachusetts

Holyoke

Chicopee

	Massachusetts	Holyoke	Chicopee
Total Population (2021/2022 Estimates)	6,981,974	37,929	55,190
Population Lives in Poverty	10.4%	26.5%	14.6%
Unemployment Rate (Nov. 2021 – Nov. 2022)	4%	5.8%	4.8%
Total School Population (2021-22)	957,774	5,547	7,664
Low-Income	42.3%	85.6%	67%
High School Dropout Rate (2020-21)	1.5%	7.7%	1.7%

Sources: www.census.gov/quickfacts; profiles.doe.mass.edu; www.lmi.dua.eol.mass.gov/LMI/LaborForceAndUnemployment

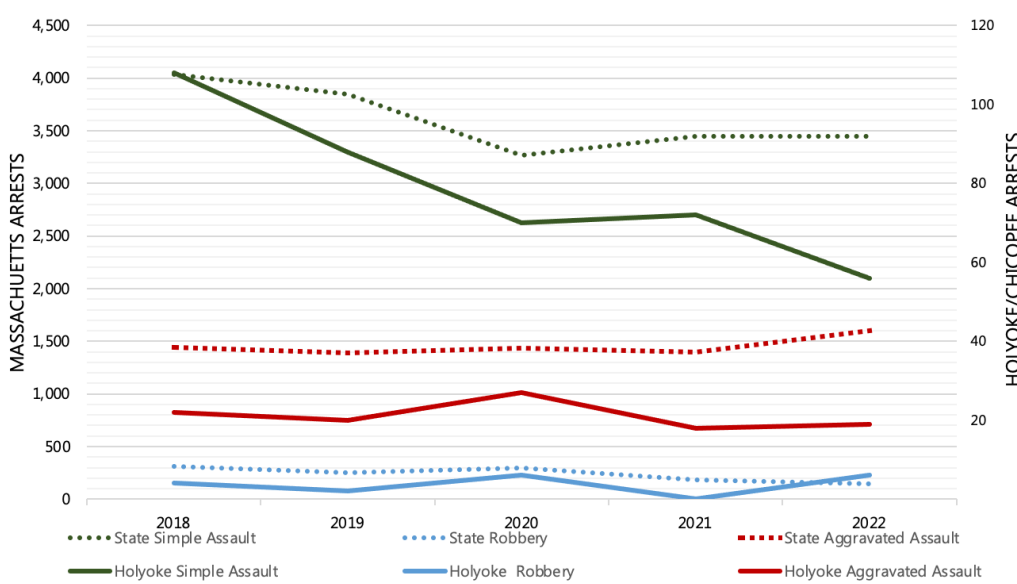
Gang Activity in Holyoke/Chicopee

Most of the drug trade and associated crime within Holyoke and Chicopee is conducted by gangs, including local, national, and internationally known gangs (e.g., Latin Kings, Latin Queens, and La Familia). Of considerable concern are also additional national gangs (Bloods) and local gangs and Dirty South, Flatbush Posse, NETAS, NHB Rollin 20s, and R2D. These gangs actively recruit juveniles at high rates and contribute to high levels of gang violence. Because Holyoke and Chicopee are ideally located on the I-90 corridor that links New York City to Connecticut, Massachusetts, Vermont, and New Hampshire, these cities, particularly Holyoke, have become central to drug trafficking across these lines. This trafficking has a major impact on violence in the community including violence associated with gang rivalry. The gangs occupy substantial turf in central Holyoke, with substantial street dealing of opiates including heroin and heroin with fentanyl. The Holyoke/Chicopee Community Survey data revealed that gang activity and associated drug dealing are the two most pressing issues confronting youth in Holyoke. Currently, the police are constantly identifying new packages which are immediately causing high rates of overdoses in the community.

10
Street Gangs

300
Gang Members

5-Year Crime Trends for Offenses Committed by Youth Ages 10-24, 2018-2022



Changes in Crime for Young People Ages 10-24, 2018-2022

- Simple assaults in...
- Massachusetts decreased 15%
 - Holyoke/Chicopee decreased 48%
- Robberies in...
- Massachusetts decreased 52%
 - Holyoke/Chicopee increased 50%
- Aggravated assaults in...
- Massachusetts increased 11%
 - Holyoke/Chicopee decreased 14%

Source: National Incident Based Reporting System (NIBRS)

Information contained in this report is from funding applications, reports supplied by the site, MA Department of Elementary and Secondary Education, US Census, MA Executive Office of Labor and Workforce Development, and Office of Grants and Research / Research Policy and Analysis Division. Special thanks to the Statewide Research Partner, Northeastern University, and the Crime and Justice Policy Lab of the University of Pennsylvania, for preparing this brief.