



DIVISION OF
CAPITAL ASSET
MANAGEMENT &
MAINTENANCE



Update: Proposed Long-Term Lease for Supportive Housing at Shattuck Campus

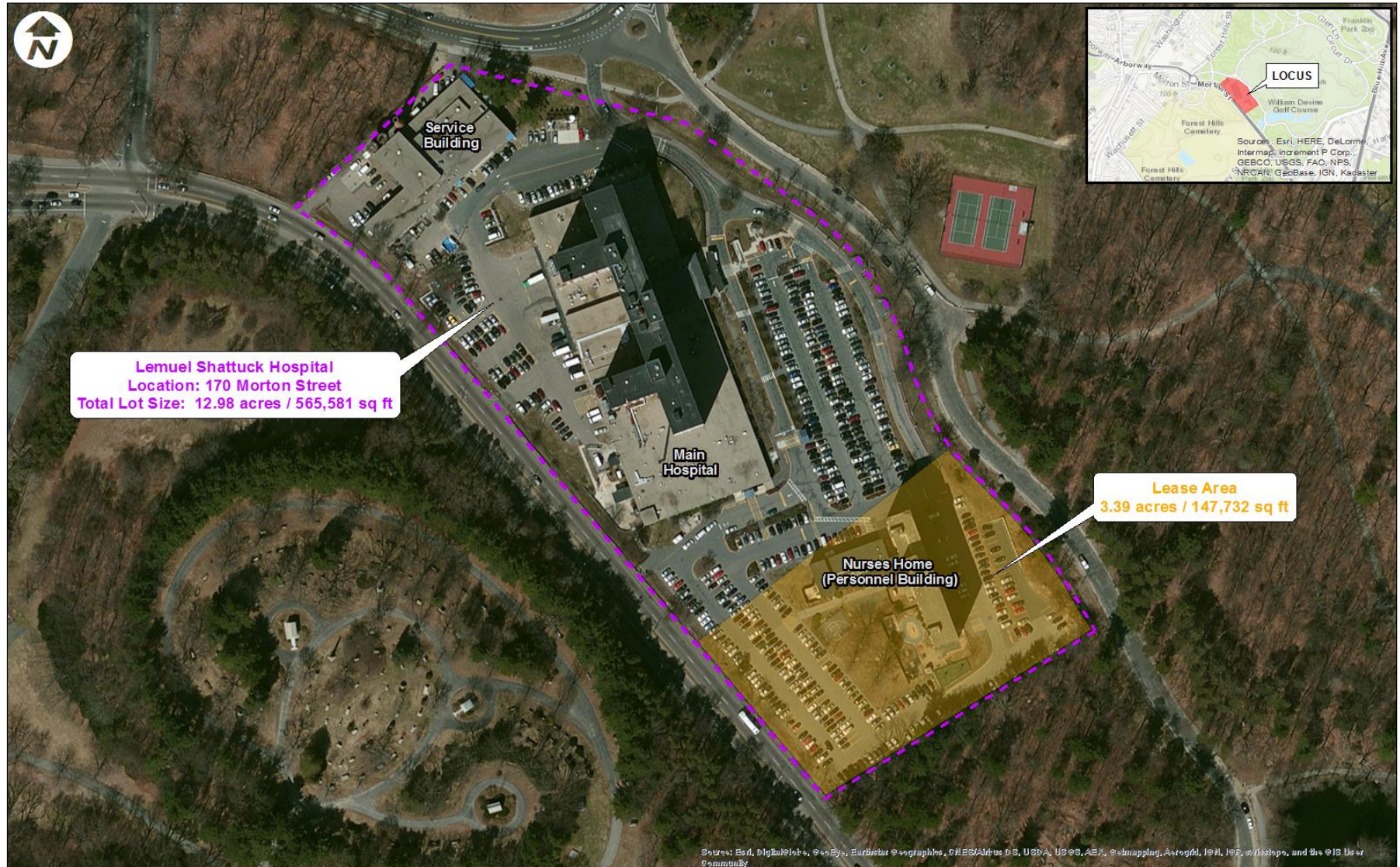
July 17, 2018

Project Recap

Asset Management Board (AMB) reviewing a proposal by Executive Office of Health and Human Services (EOHHS), Dept. of Public Health and DCAMM to lease up to two acres of the Shattuck Campus for development of Supportive Housing for the homeless

- up to 2 acres on south side of Shattuck Hospital campus
- lease term of up to 99 years
- nominal rent
- permanent supportive housing with supportive services
- strong support and involvement of city of Boston Dept. Neighborhood Development and state Dept. Housing & Community Development

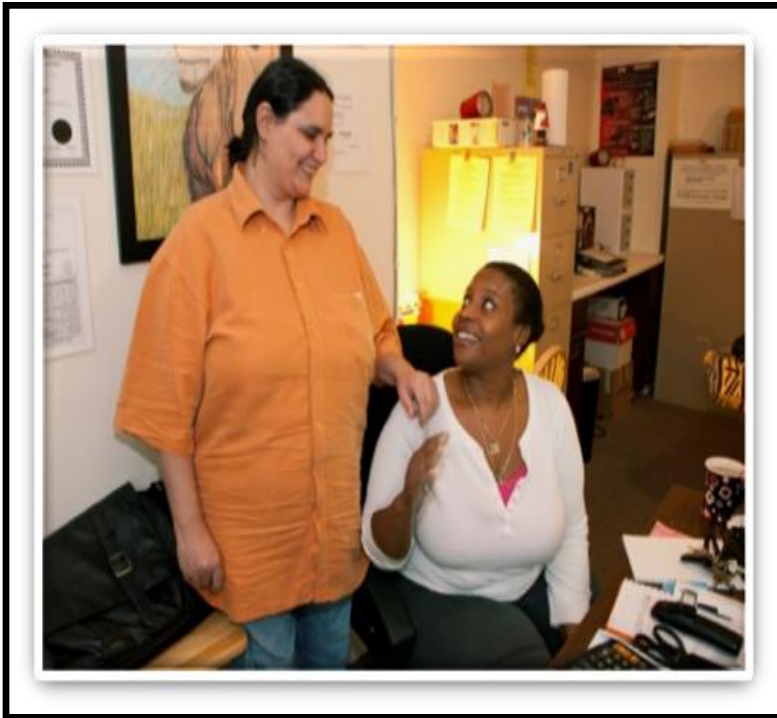
Supportive Housing Potential Lease Area



What is Supportive Housing?

Permanent housing that combines affordability with robust supportive services

Grew out of “Housing First” approach: stabilize housing, then address other issues



Project Status

- Preliminary Review of Proposal by AMB: July 2017
- Public Hearings held: April 26, 2018 at English High School and May 15, 2018 at Franklin Park Clubhouse
- 60± people at the April hearing and 54± at the May hearing

Summary of Comments

- Received approximately 50 written submissions (e-mail, post, on DCAMM webpage)
- Multiple oral comments at 2 hearings
- Petition in support (37 signatures)

General Breakdown of Written Comments

Support	Oppose	Process for Siting Supportive Housing	Location of Housing	Local, State, Federal Permit Processes	Support Services for Residents
41	10	10	2	8	11

Return Shattuck Campus to Franklin Park	Green Space on Shattuck Campus/ Connectivity to Park	Design of Supportive Housing and Site	Public Transit- Restroom
11	7	5	2

Public Hearing Themes

- Need for supportive housing/In favor of this type of housing
- Need for supportive services to be strong
- Insufficient process/lack of opportunity for public input
- Location of housing on campus/connection to community
- Opportunity to return land to Franklin Park
- Design of building and site (net zero or LEED recommended)
- Green space on campus and better connectivity to Franklin Park
- Historic social inequities
- Need for improved bus stops/request for public restrooms

Frequently Asked Questions

- Why seeking AMB long-term lease rather than legislative directive?
- What State and/or Federal support needed to build supportive housing?
- Were other state sites pursued?
- Will there be an open process for Shattuck Campus Master Plan?
- What is basis for restriction of campus use to public health purposes?
- Will long-term commitment to services be there?

Newton Pavilion Acquisition Update

- Opportunity to purchase high quality hospital building in Boston
- Commonwealth acquired Assignment to purchase under 99-year ground lease in April 2018
- Closing on ground lease October 2018
- Shattuck Hospital inpatient and outpatient will move to Newton Pavilion building (est. 2021), following renovation to meet state's specific needs

Shattuck Master Plan

- With planned move of Shattuck inpatient beds and outpatient programs in 2021, opportunity to envision the future use of Shattuck site
- Use of site restricted to purposes of the state department of public health, per statute transferring Shattuck to the state (C. 770 of Acts of 1949)

Shattuck Master Plan

- EOHHS has hired Health Resources in Action (HRIA) to conduct 12-month planning process to determine/guide future use of Shattuck campus
 - Will be extensive community outreach
 - First public meeting in September 2018
- HRIA will look at public health needs of today/tomorrow; envision the future with stakeholder input; ensure community engagement; account for the city of Boston's related planning efforts; generate alternatives; conduct financial modeling

What Happens Next?

- Supportive housing needs 2 acres of 13-acre campus
- Between now and fall 2018, DCAMM will analyze location selected for supportive housing in AMB proposal
- Staff will report back to AMB in September on results of initial siting analysis and status of Master Plan



Questions & Comments?

