

# **Massachusetts Bay Transportation Authority**

## **MBTA Construction Contract No. E59CN01: SL Courthouse Station Northeast Headhouse**

---

Fiscal and Management Control Board

April 26, 2021

Thomas Rovero, RA Project Manager, Capital Delivery

# Project Benefits – Silver Line Courthouse Station

---

- Provides new headhouses for SL Courthouse Station adjacent to Seaport Square to enhance TOD access.
- Provides a concourse level extension through the stations slurry wall to new entrance and egress incorporating an accessible elevator, a new escalator and a wide stair from the sidewalk at Seaport Boulevard.
- Both new headhouses are equipped with demountable flood control barriers to enhance Storm Resiliency through the 2040 timeframe. Newly negotiated perimeter easements can accommodate future construction of storm barriers meeting the Authority's 2070 storm resiliency requirements.
- Addresses the State of Good Repair of building systems (mechanical, plumbing, electrical, drainage, wayfinding signage and life safety systems)



# Request of the Fiscal and Management Control Board

---

- Today's Board action will provide approval for Station Improvements including two headhouses equipped with demountable flood control barriers, one for an accessible elevator and one for a new escalator and egress stair connecting the station concourse level with the sidewalk. Scope also includes related mechanical electrical work, wayfinding signage and demolition of an existing emergency egress stair for Silver Line Courthouse Station, situated underneath Seaport Boulevard in Boston.
- Funding for this action is contingent upon the MassDOT Board voting to approve the execution of the ISA amendment.



# Proposed Vote

---

## **VOTED:**

That the General Manager be, and hereby is, authorized to execute, in the name of and on behalf of the Massachusetts Bay Transportation Authority, and in a form approved by the General Counsel, a construction contract (No. E59CN01) with McCourt Construction Company, in connection with the construction of certain headhouses for the Silver Line Courthouse Station, in the amount of \$15,292,000.



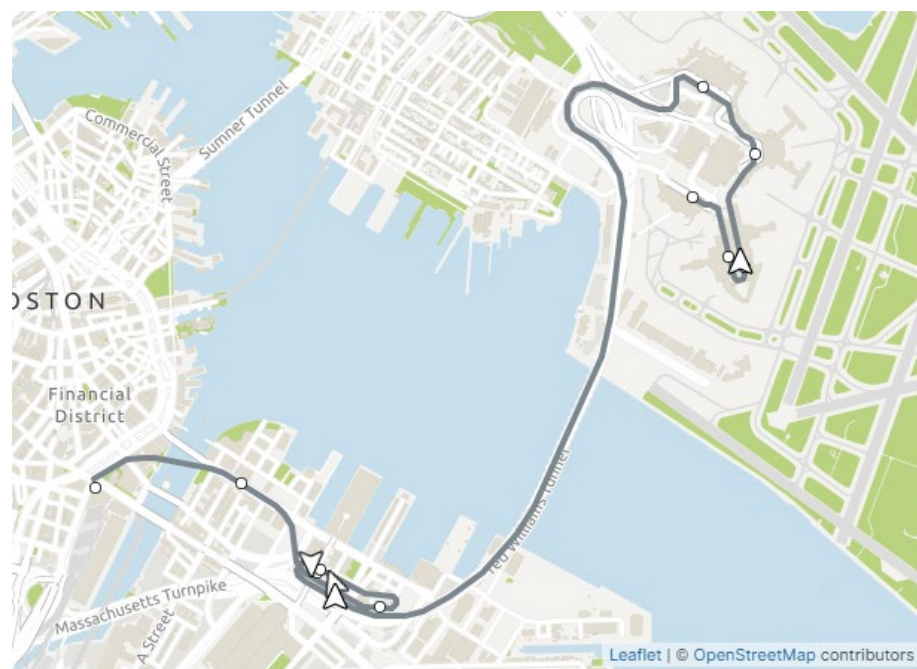
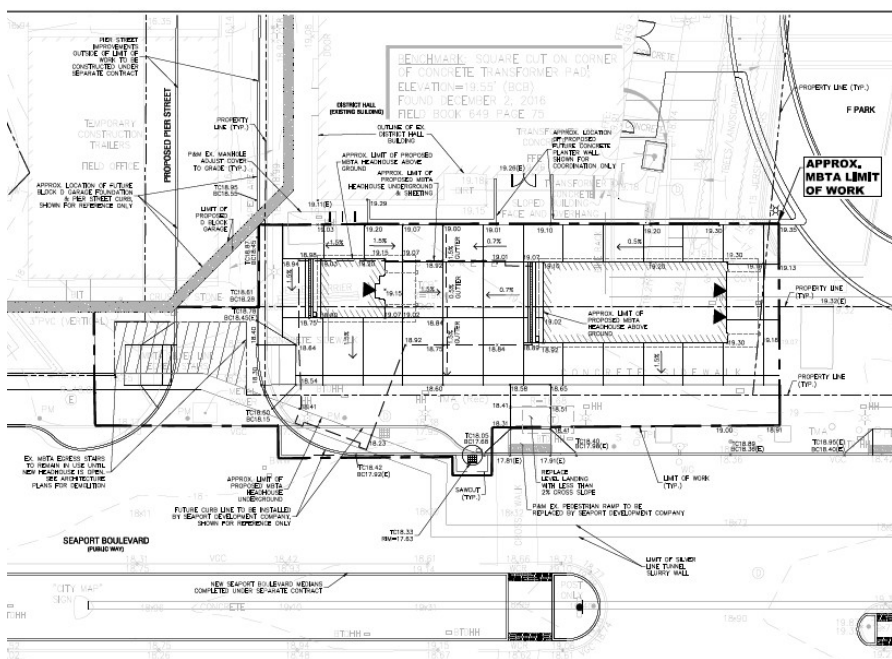
# Appendix

## Project Scope Details



# Overview

Station Improvements include two headhouses equipped with flood barriers and incorporating an accessible elevator, an escalator and egress stair connecting the Silverline Courthouse Station concourse level with the sidewalk at Seaport Blvd, Boston. Scope also includes related mechanical/electrical work, wayfinding signage and demolition of an existing emergency egress stair.



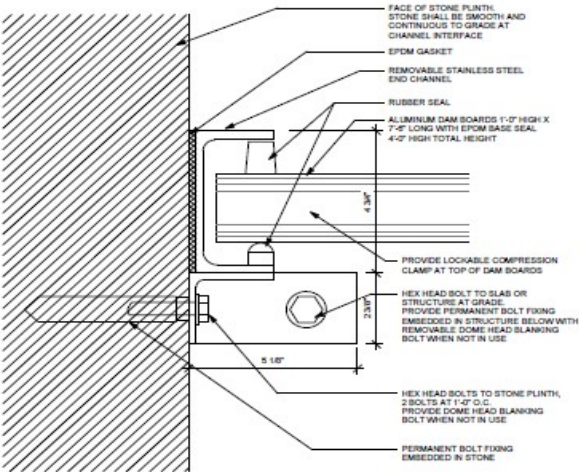
Elevator to left, Stair & Escalator, to right, as viewed from Seaport Blvd.



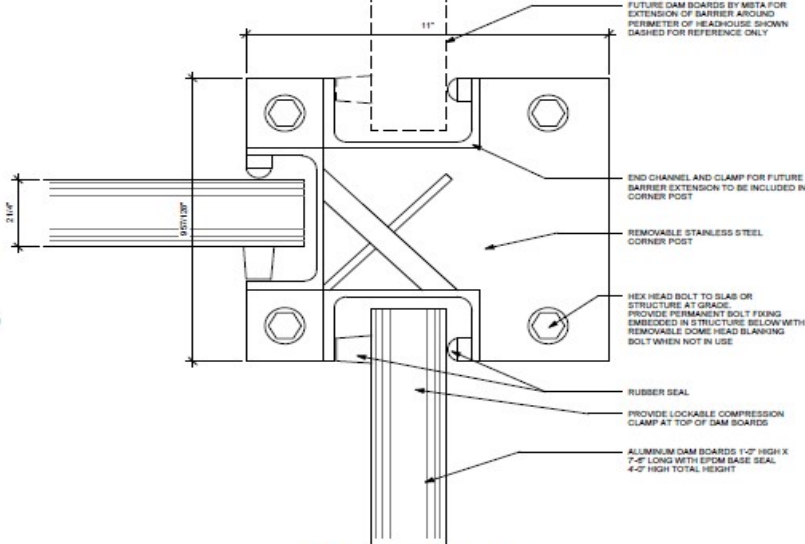
# Stair/Escalator Headhouse, foreground, Elevator Headhouse, background



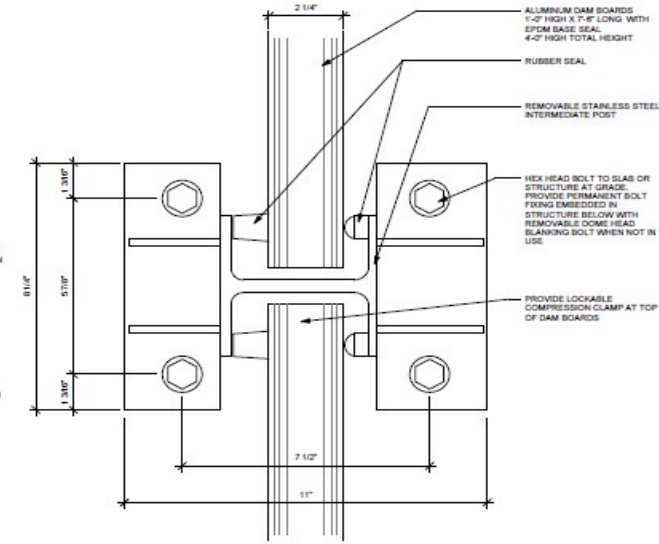
# Flood Control Barrier Details



**1** PLAN DETAIL - FLOOD BARRIER END CHANNEL  
A-34 SCALE: 6" = 1'-0"



**2** PLAN DETAIL - FLOOD BARRIER CORNER POST  
A-34 SCALE: 6" = 1'-0"

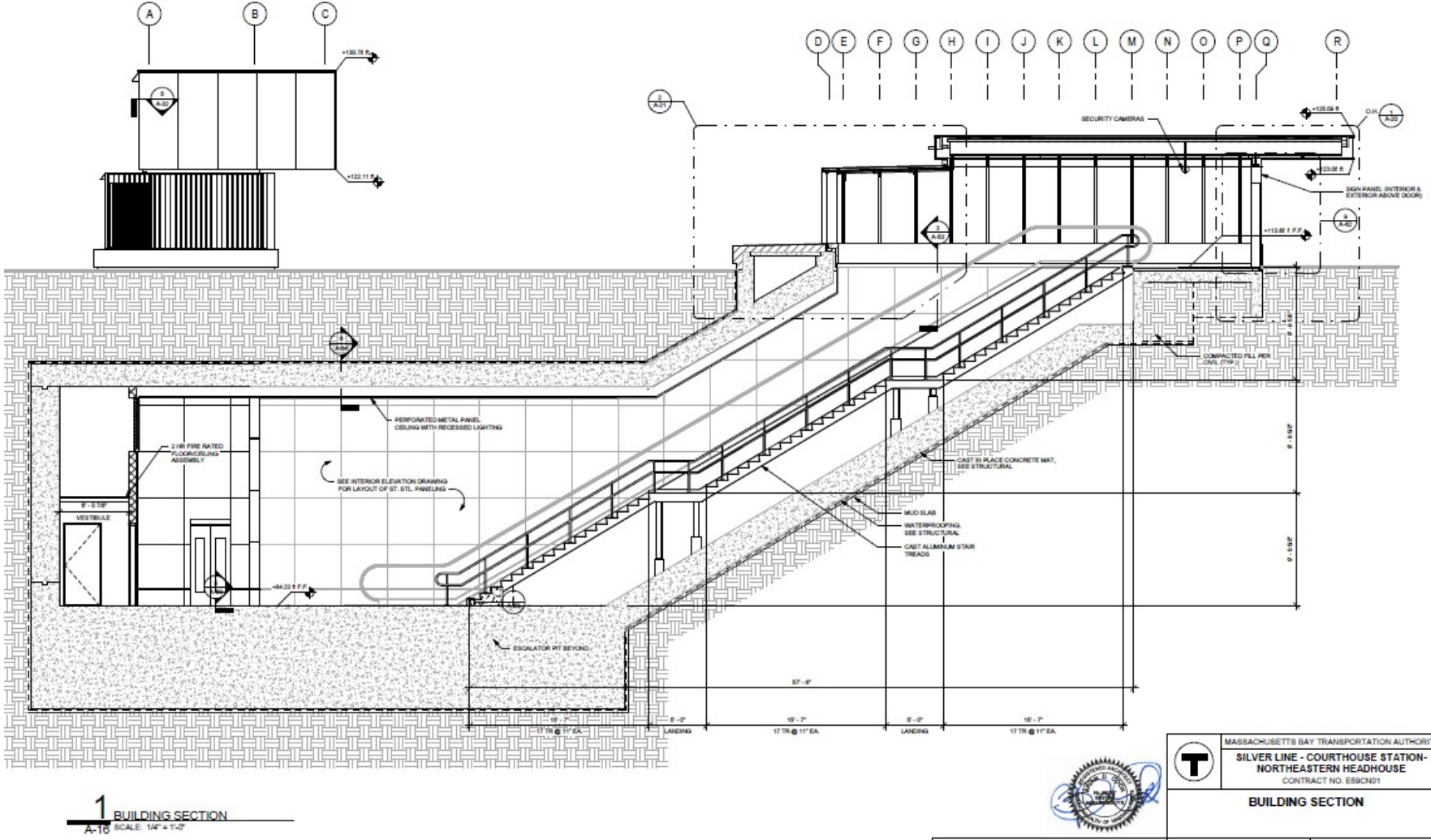


**3** PLAN DETAIL - INTERMEDIATE FLOOD BARRIER STANCHION  
A-34 SCALE: 6" = 1'-0"

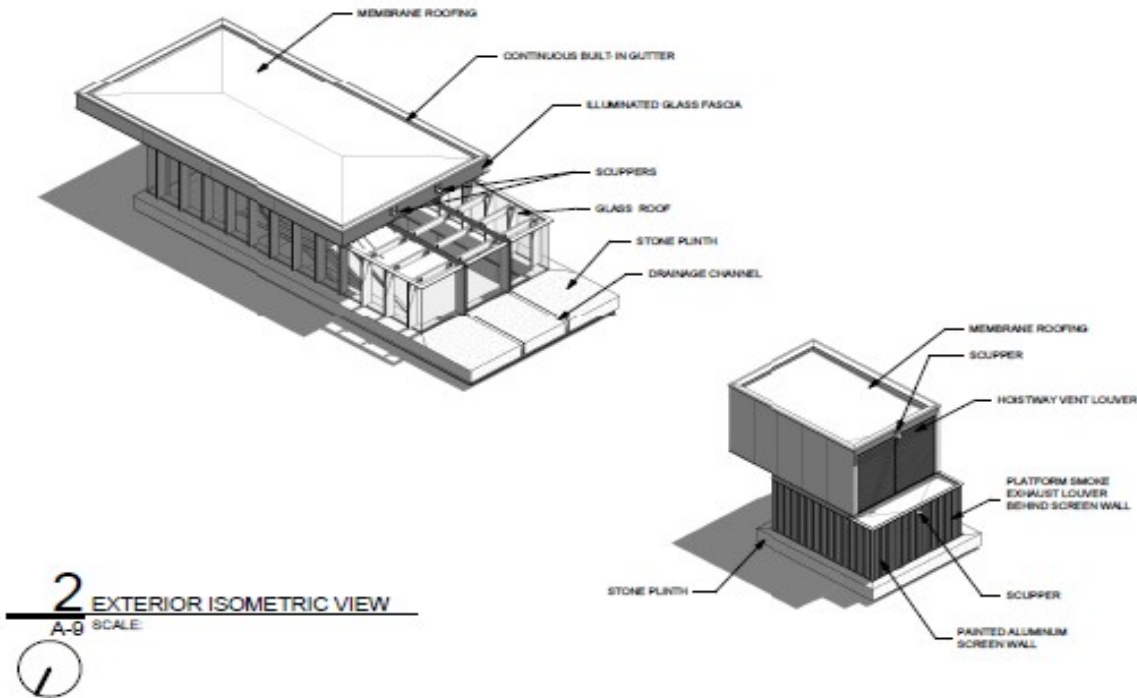
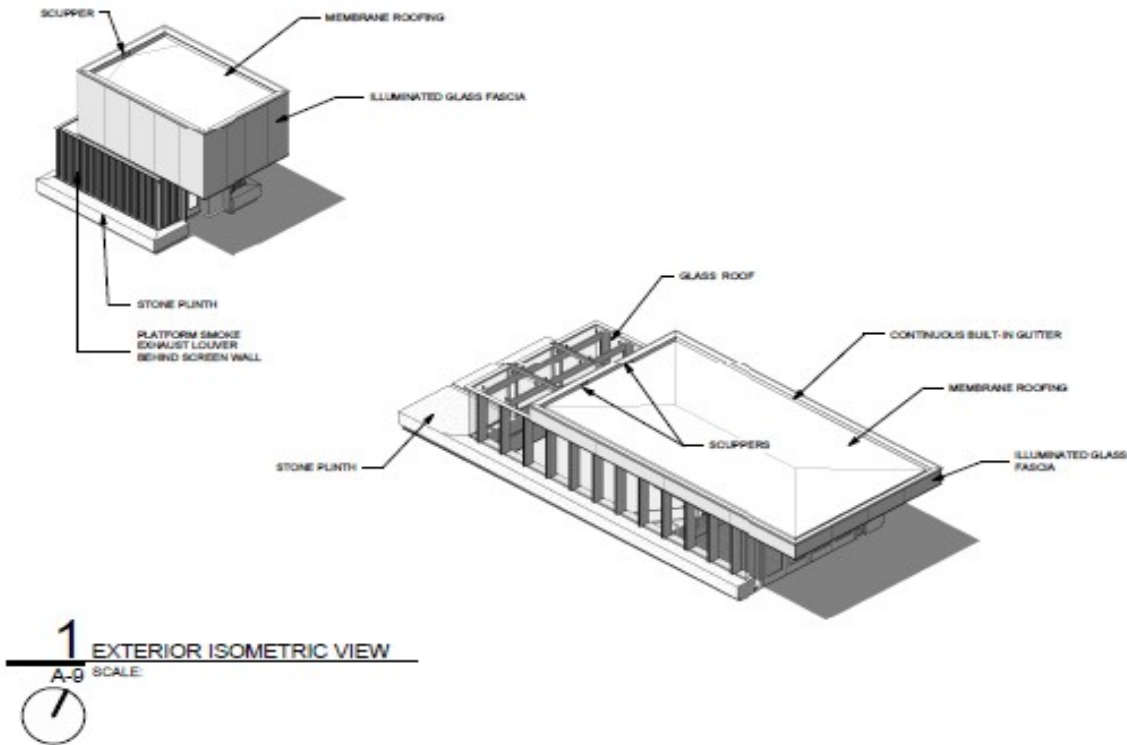


<b>T</b>	MASSACHUSETTS BAY TRANSPORTATION AUTHORITY
	SILVER LINE - COURTHOUSE STATION - NORTHEASTERN HEADHOUSE
	CONTRACT NO. E59CND1
FLOOD BARRIER DETAILS	

# Longitudinal Section looking North from Concourse level up to the Sidewalk at Seaport Blvd.



# Birdseye Isometric Views



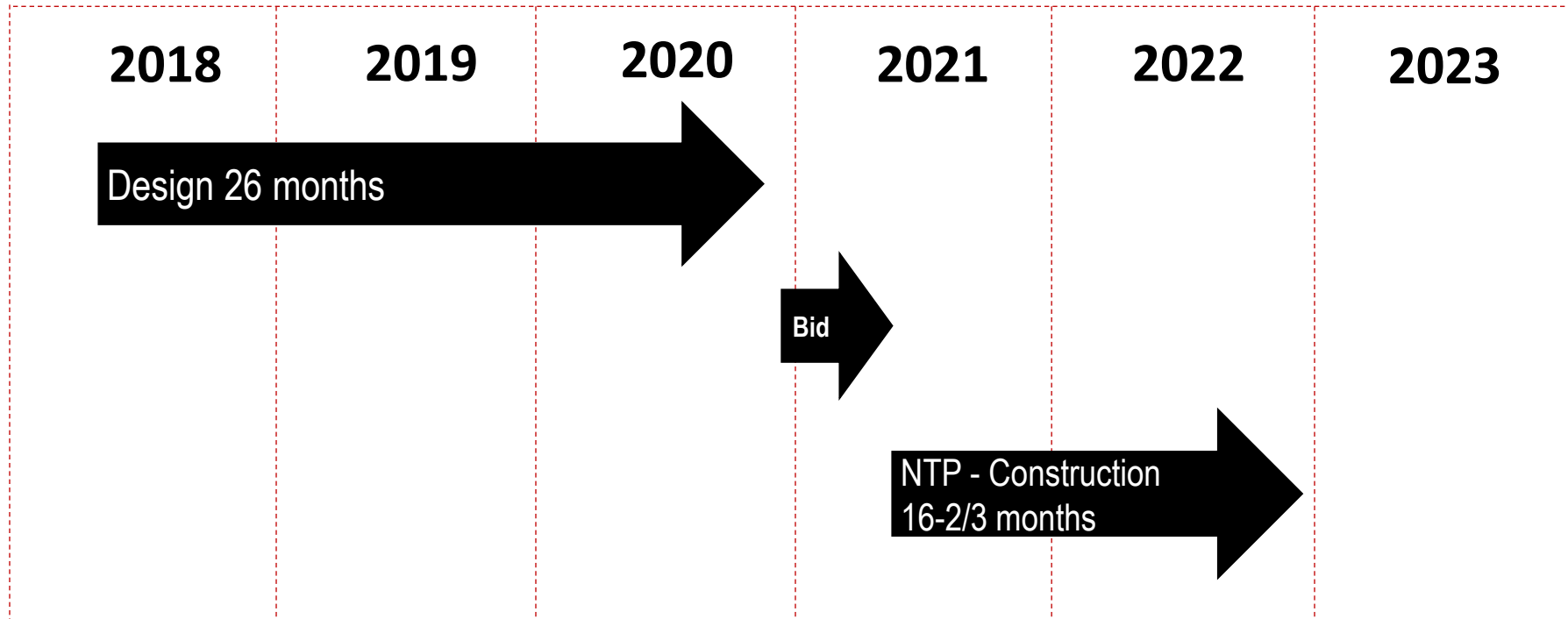
# Operations During Construction

---

- Construction schedule to utilize up to two (2) weekend diversions of Bus Operations from the Silver Line Busway to surface streets, giving the Contractor Exclusive Access to Courthouse Station from 9:30 PM Friday to 4:30 AM Monday.
- All work that cannot be completed with work zones or during special outages that would otherwise impact service will be performed during Non-Revenue Hours between 12:30 AM to 4:30 AM.
- Contractor will be allowed to work within “non-public” areas within the Station at all times of day, provided those work areas are not disruptive to MBTA Operations, the travelling public, and building tenants in the adjacent buildings.
- All work to be in coordination and harmony with MBTA Contract **X02CN04:**
- SL Courthouse Station Waterproofing Resiliency and Repairs.



# Project Schedule



- Advertise for Construction: December 2020
- Anticipated Contractor Notice to Proceed: May 2021
- Approximate Construction Duration: 16-2/3 months
- ISA Contract Duration is from 11/04/2020 to 3/31/2023



# Construction Procurement

---

- Project advertised on December 1, 2020
- Engineer's Estimate was \$11,540,000.00
- Bid opening on February 11, 2021
- Six bids were received:

**\$15,292,000.00**

**McCourt Construction Company (Low Bidder)**

\$16,243,000.00

BOND Civil & Utility Construction, Inc.

\$16,356,000.00

Wes Construction Corp.

\$16,890,000.00

Skanska Usa Civil Northeast, Inc.

\$17,378,000.00

Sps New England, Inc.

\$18,717,943.00

J. F. White Contracting Co.

- A bid analysis has been completed and **McCourt Construction Company** is the recommended low responsible bidder.

