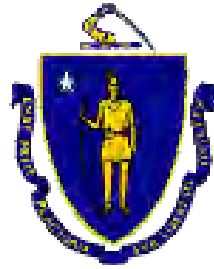




Southern New England Trunkline Trail

DCR Public Meeting

December 7, 2021 6:00pm- 7:30pm
Teams Meeting



Commonwealth of Massachusetts

Governor

Charles D. Baker

Lieutenant Governor

Karyn E. Polito

Energy and Environmental Secretary

Katherine A. Theoharides

Department of Conservation and Recreation Acting Commissioner

Stephanie C. Cooper



DCR Mission Statement

*To protect, promote and enhance our
common wealth of natural, cultural
and recreational resources
for the well-being of all.*

Meeting Logistics

- You will have the opportunity to submit comments over the course of the next two weeks at:
 - DCR Public Comments
<https://www.mass.gov/forms/dcr-public-comments>
- Two ways to ask questions during the meeting
 - Use chat feature
 - Raise your hand using the Teams function, and you will be given permissions to unmute and speak.
- *Please note that this public meeting will be recorded; the recording will be a public record.*

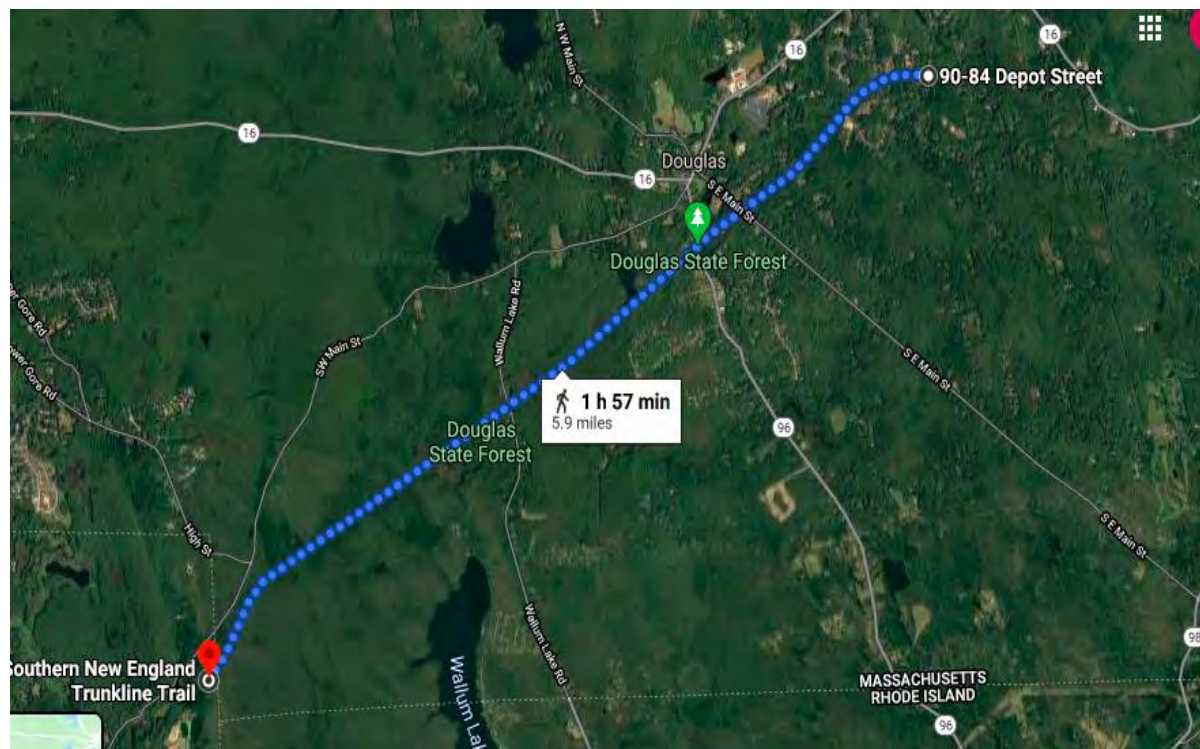
Project History / Context: SNETT

- 22-mile former rail corridor
- Douglas to Franklin
- Acquired by DCR(DEM) in 1984
- 3.5-mile Blackstone Greenway, opened 2017
- Recent improvements in Bellingham and Franklin



Current Project: SNETT Douglas

- Connecticut State Line to Depot Street, Douglas
- Total length - 6+ miles
- Includes Two Trailheads / Parking lots
- Much within Douglas State Forest



Project Goals

- Create a Shared Use Path
 - Pedestrians
 - Bicyclists
 - Wheelchairs
 - Equestrians
- Universal Accessibility
- Environmental Sensitive design and construction
- Improve Roadway Crossing Safety

Project Goals

- Enhance Parking/ Trailhead at South Street
- Enhance Parking/ Trailhead at Depot Street
- Provide Wayfinding and Interpretive signage
- Installing rest areas along the trail
- Maintain side path connections
- Make Regional Connection to Airline Trail, CT

Existing Conditions



Existing Conditions - State Bound



Existing Conditions – Side Swales



Existing Conditions – Signage and Side Trail Connections



Existing Conditions

Wallum Lake Road Arch

Existing Conditions

Grand Trunk RR remains



Existing Conditions



Douglas State Forest Parking / Trailhead Area at South Street





Depot Street Parking /
Trailhead Area

Yew Street Crossing



Franklin Street Crossing



South East Main Street



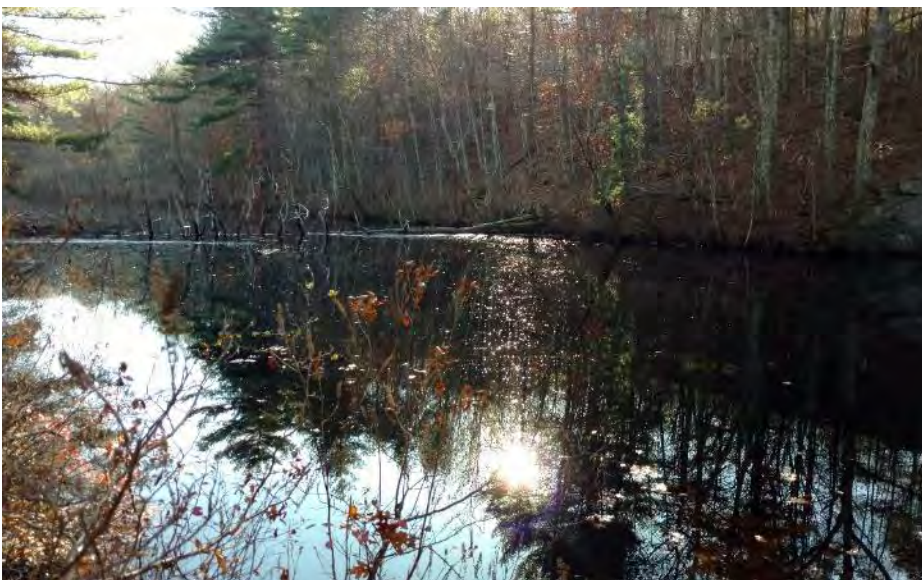
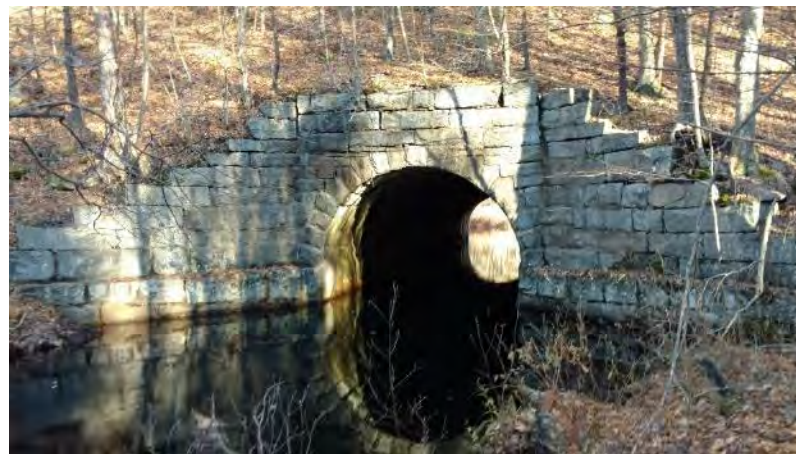
South Street Crossing



Environmental Resource Areas



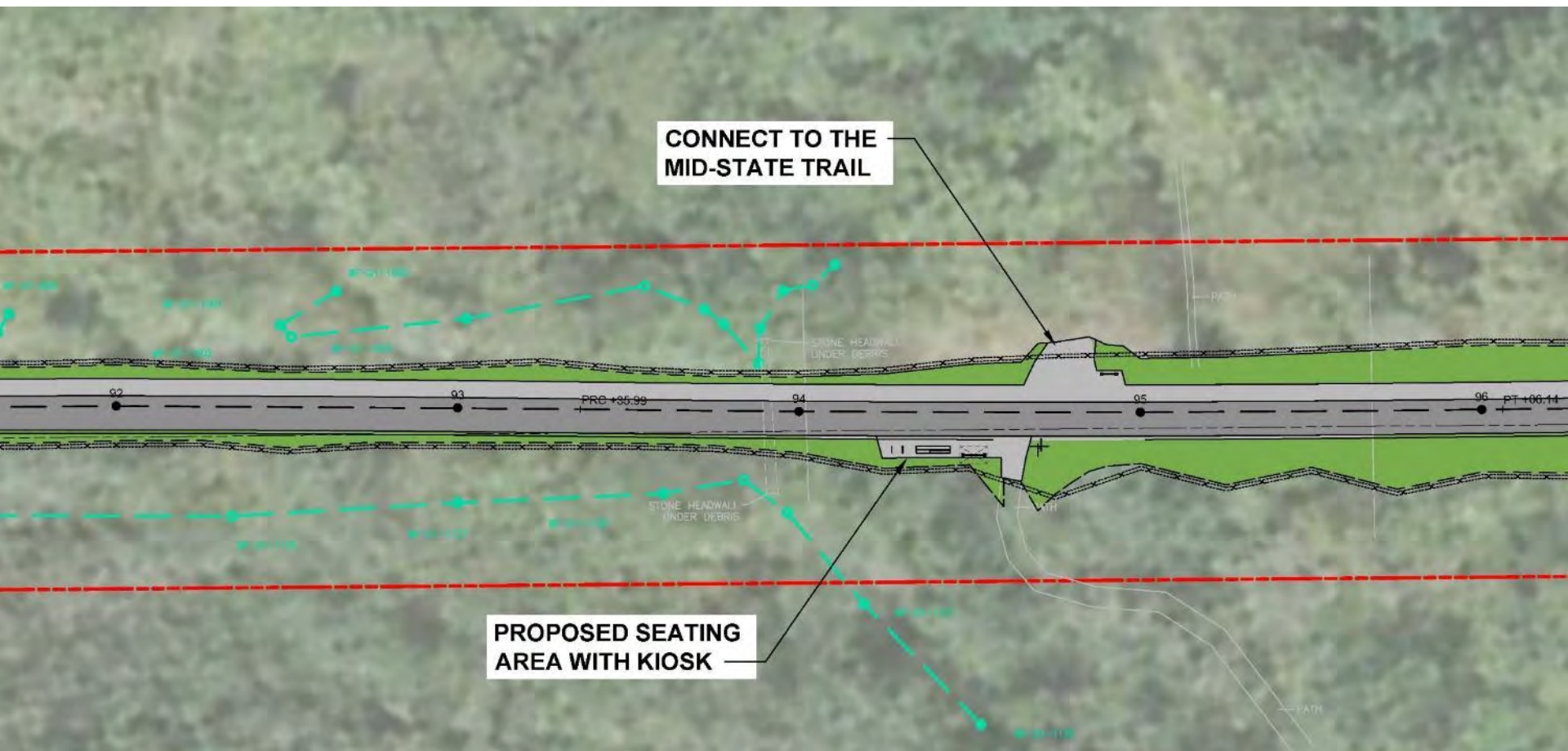
Environmental Resource Areas



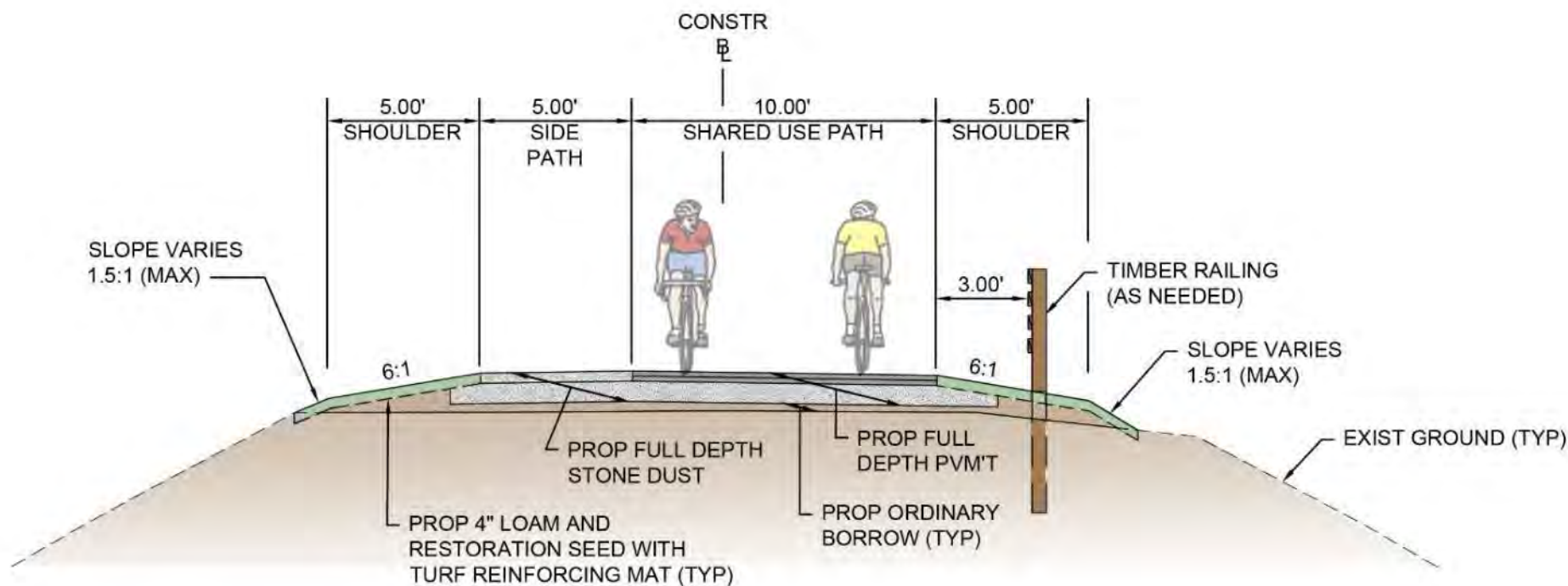
Existing Conditions – Bridges over Rocky Brook



Proposed Improvements



Shared Use Path Cross Section



TYPICAL SHARED USE PATH SECTION

Alternatives considered

- Cross sectional width
 - Bikeway guidelines
 - Equestrian use
- Surface materials
 - Stabilized Aggregate
 - Paved
- Trail Heads and Parking Areas
 - South Street
 - Depot Street

Ex: Stabilized Aggregate (Bellingham)



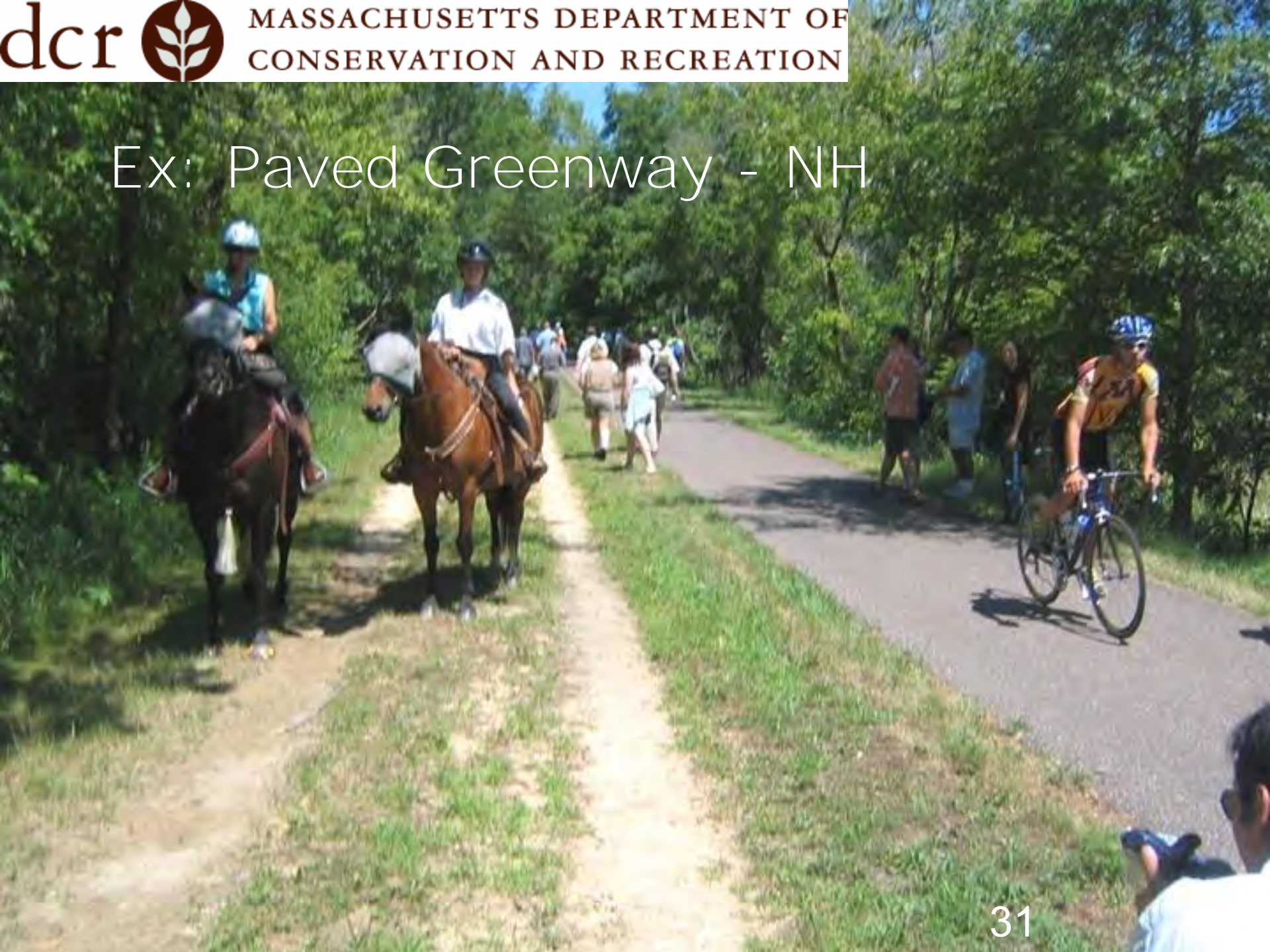
Ex: Paved Greenway (Blackstone)



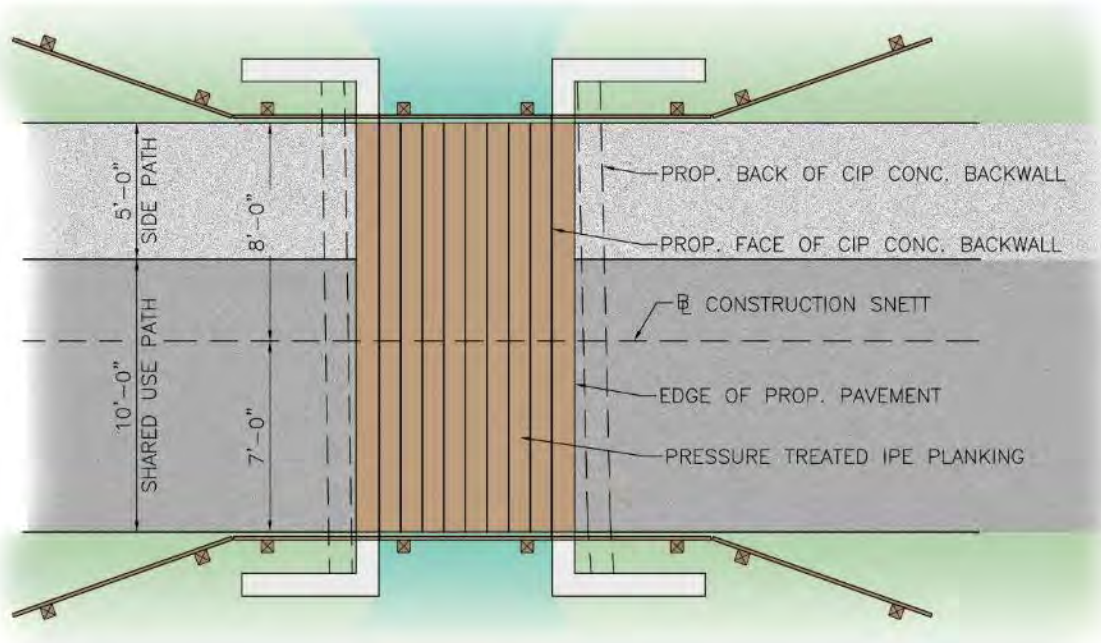
Ex: Paved Greenway - Mansfield



Ex: Paved Greenway - NH

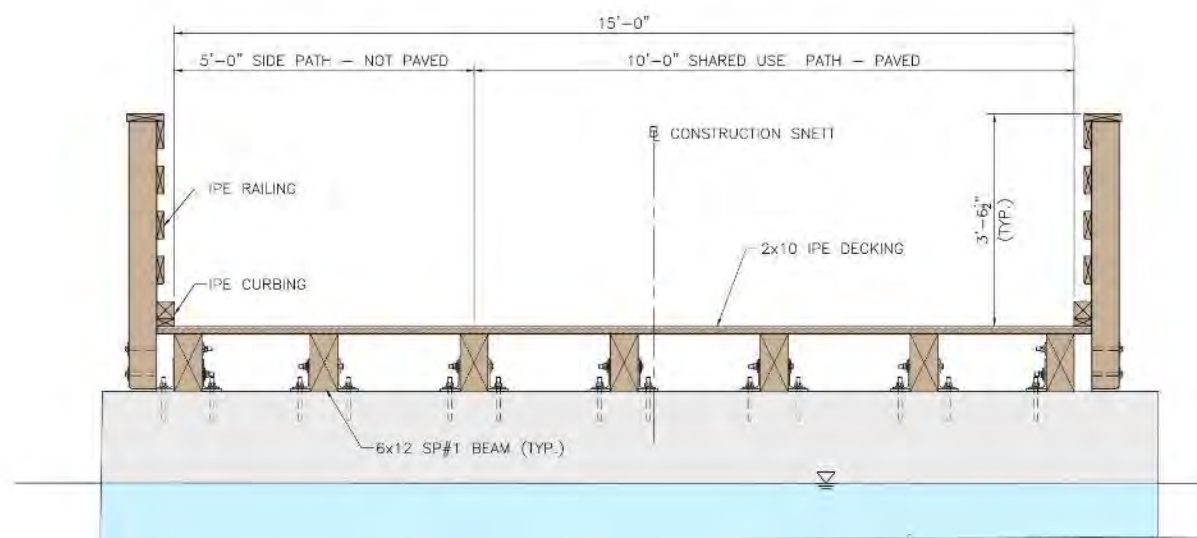


Bridge Deck Replacements



TIMBER BRIDGE PLAN VIEW

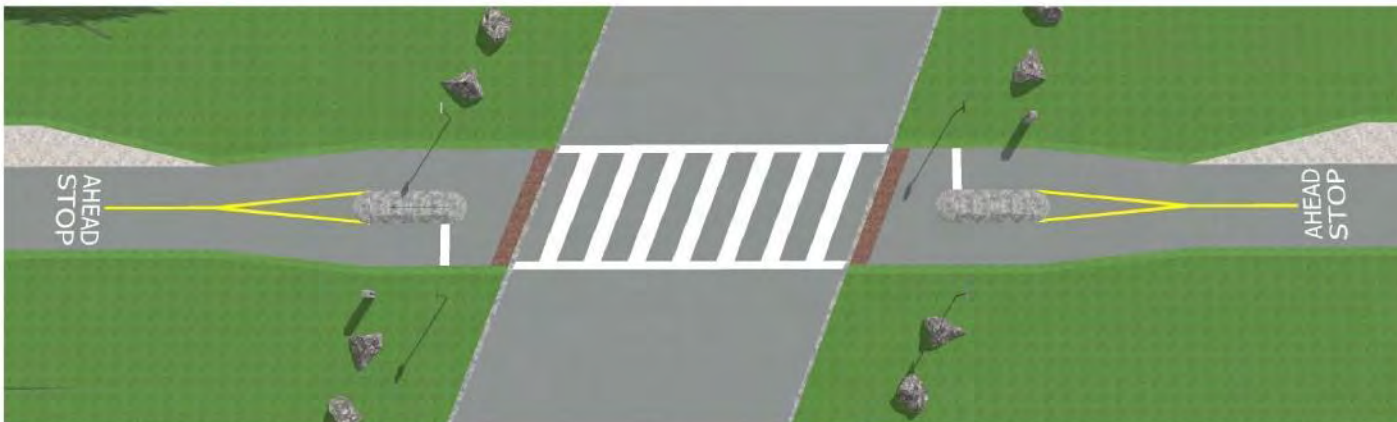
Bridge Cross Sections



TIMBER BRIDGE SECTION

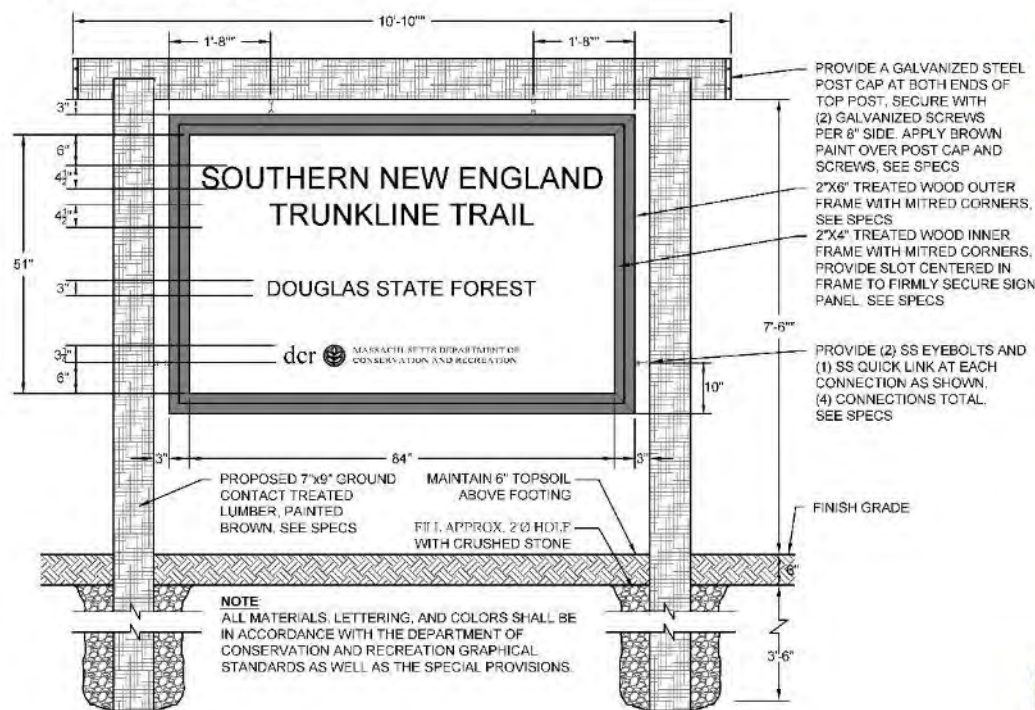
Crossing Treatments

ROAD CROSSING



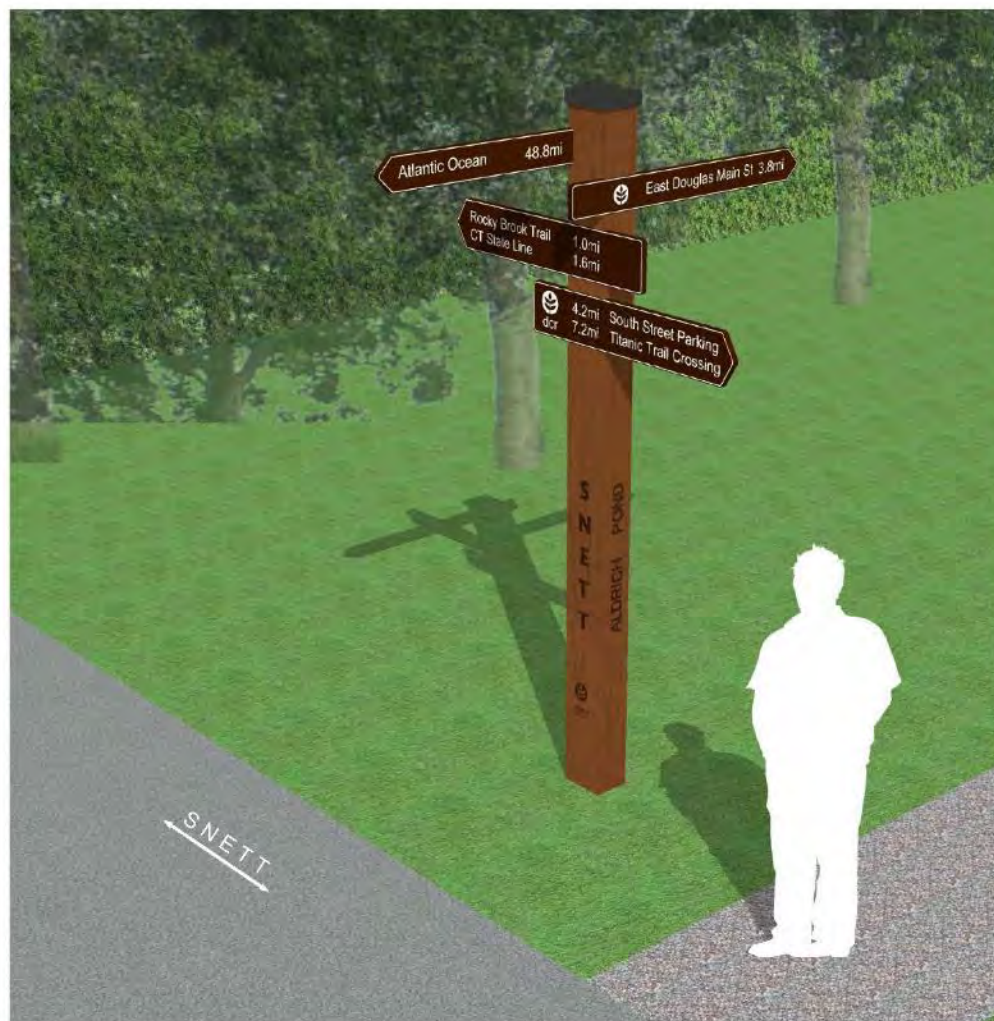
Park Signage

DCR PARK ENTRY SIGN



Signage

WAYFINDING SIGN



Signage

INTERPRETIVE SIGN



3' BOTTOM OF SIGN TO GROUND
SIGN 30" X 40" (SIM. TO BLACKSTONE)

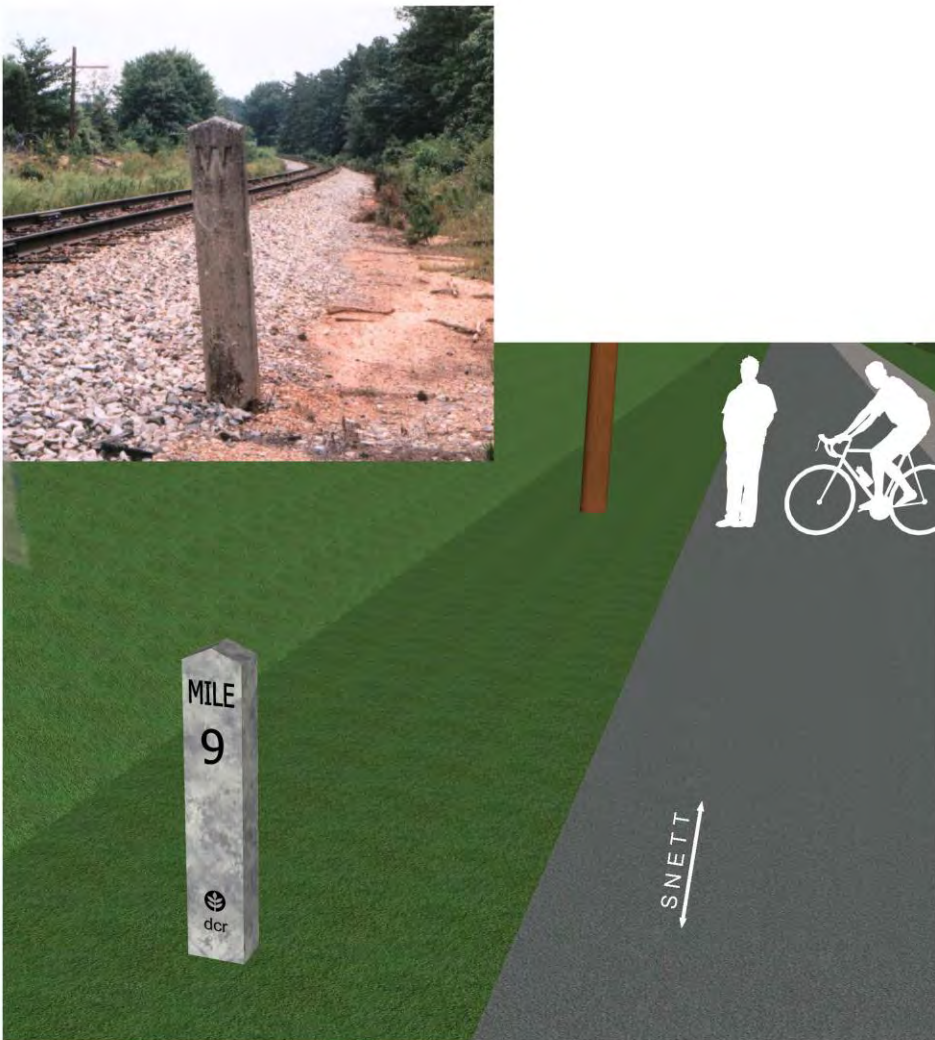




DRIFTER BENCHES AND DRIFTER STRUCTURE
BY STREETLIFE

- FSC CERTIFIED RECLAIMED HARDWOOD
- WOOD POSTS SANDED AND CUT THE U.S.
- WOOD NOT TREATED WITH ANY ADDITIONAL MATERIALS

Trail Amenities



SWERVE BIKE RACK BY DERO



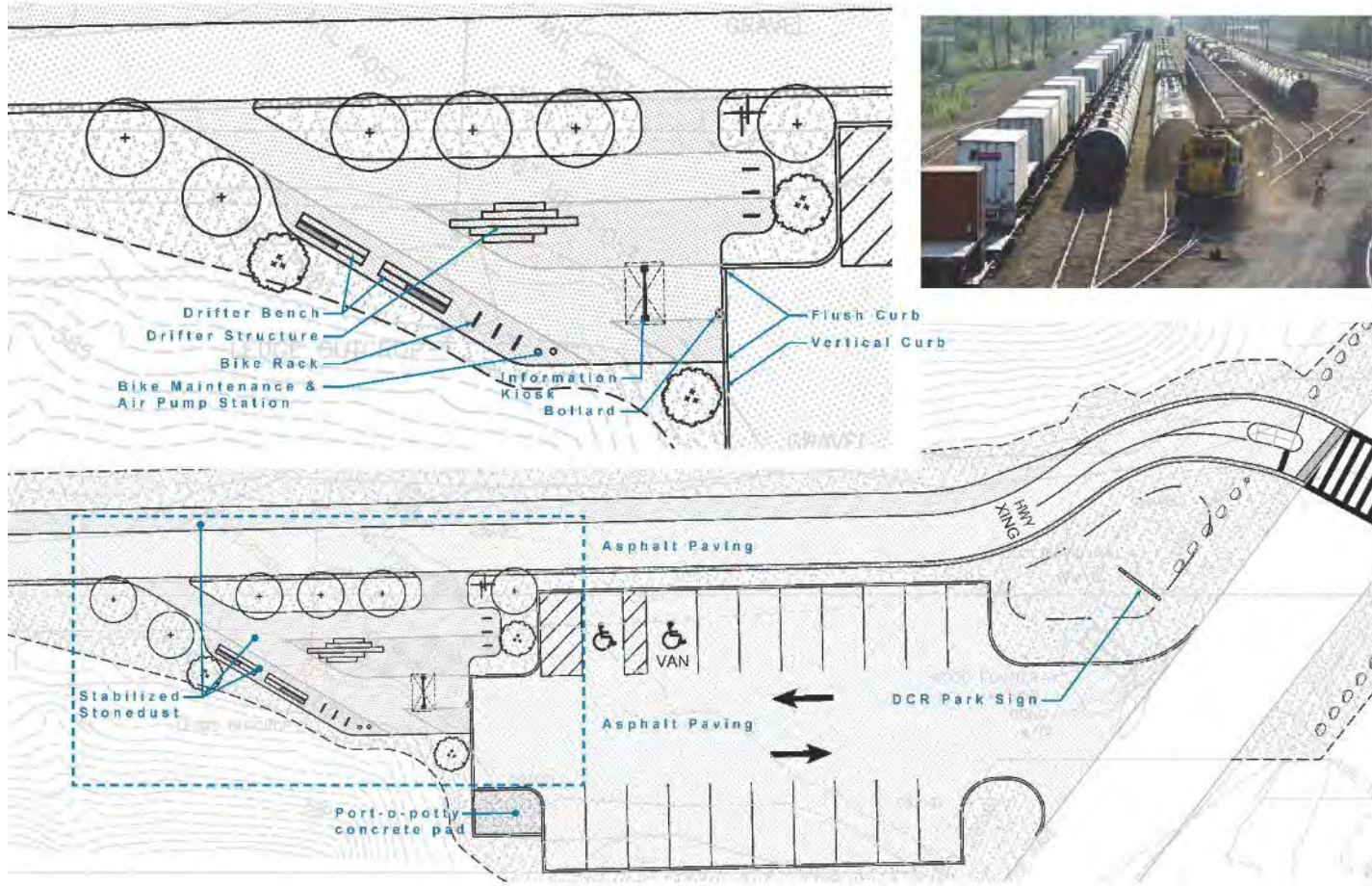
BIKE KIT 3 REPAIR STATION BY DERO

South Street Parking Area



South Street Parking / Trailhead Area

SOUTH STREET STATION



South Street Parking / Trailhead Area

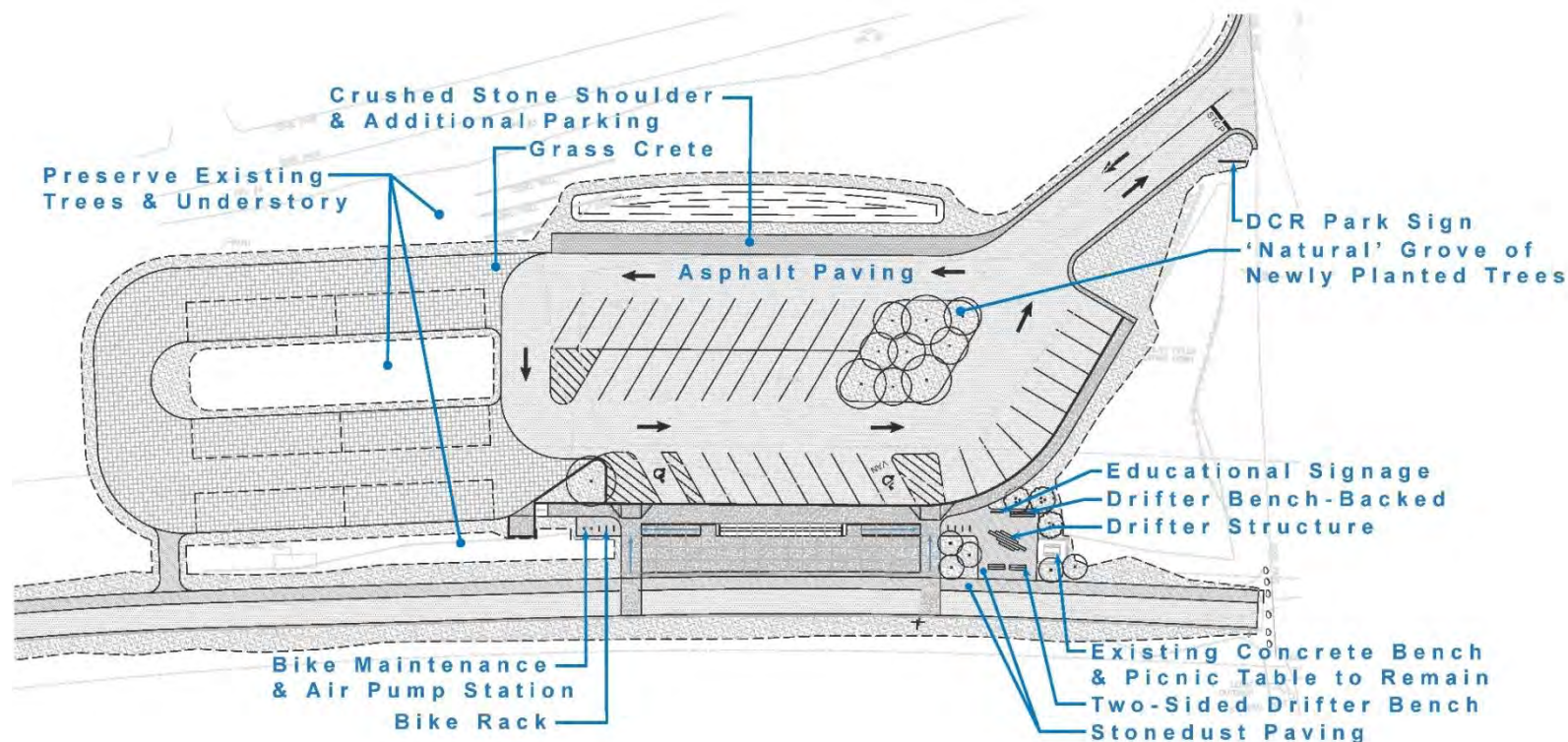
SOUTH STREET STATION



Depot Street Parking Area



Depot Street Parking / Trailhead Area



State Line Trailhead



Native Plant Palette



Acer rubrum
Red Maple



Betula nigra
River Birch



Nyssa sylvatica
Black Tupelo



Ostrya virginiana
Hop Hornbeam



Quercus alba
White Oak



Pinus strobus
Eastern White Pine



Azalea canadense
Rosebay Rhododendron



Comptonia peregrina
Sweetfern



Myrica gale
Sweetgale



Sporobolus heterolepis
Prairie Dropseed



Viburnum dentatum
Arrowwood Viburnum

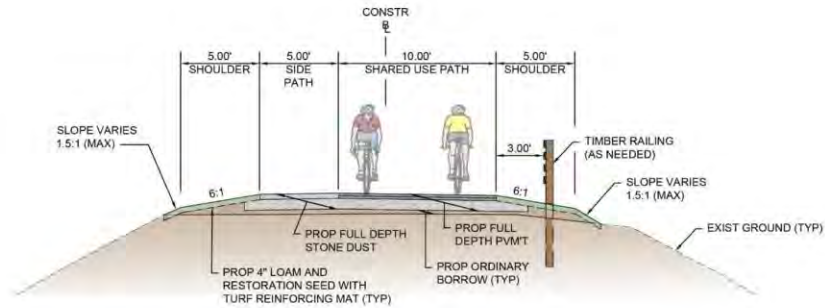
Schedule and Next Steps

- Review Public Feedback
- Finalize design
- Environmental permitting

Anticipated construction begin 2024*

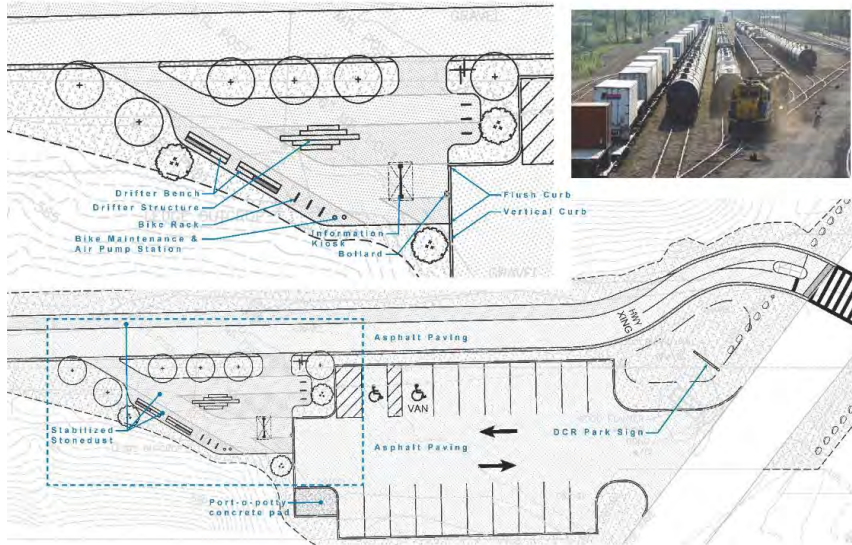
*based on funding availability

Questions and Feedback

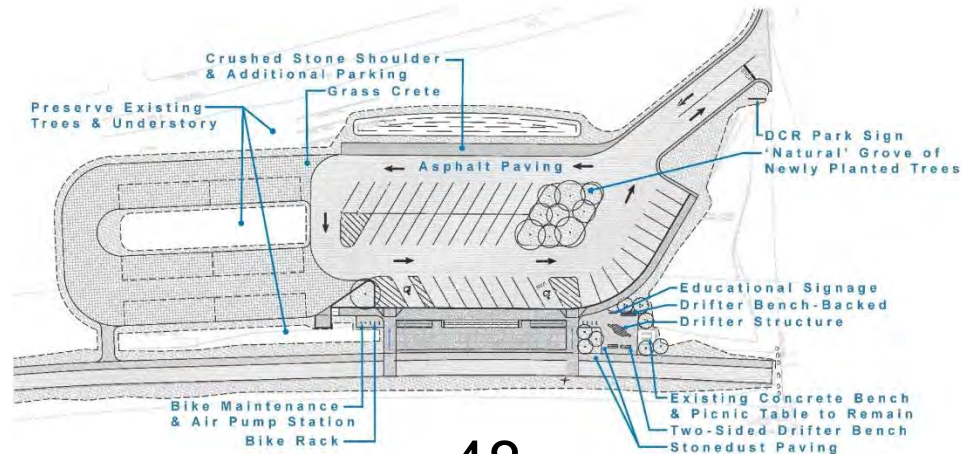


TYPICAL SHARED USE PATH SECTION

SOUTH STREET STATION



WAYFINDING SIGN



Additional Information

- Recording and tonight's slide deck will be available at:
 - www.mass.gov/dcr/past-public-meetings
- If you have comments on this project:
 - Submit online: www.mass.gov/dcr/public-comment
 - Deadline: Tuesday, December 21st, 2021

Please note: the contents of comments submitted to DCR, including your name, town and zip code, will be posted on DCR's website. Additional contact information provided, notably email address, will only be used for outreach on future updates to the subject project or property.

- If you wish to subscribe to a DCR general information or project-related listserv: contact DCR's Office of Community Relations via email at mass.parks@mass.gov