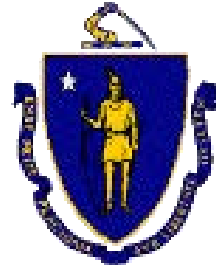


South Bank Park

Site Improvements

Public Listening Meeting
June 11, 2024
Boston, MA





Commonwealth of Massachusetts

Governor

Maura Healey

Lieutenant Governor

Kim Driscoll

Energy and Environmental Affairs Secretary

Rebecca L. Tepper

Department of Conservation and Recreation Commissioner

Brian Arrigo



DCR Mission Statement

*To protect, promote, and enhance our
common wealth of natural, cultural
and recreational resources
for the well-being of all.*

Meeting Logistics

- Two ways to ask questions during the meeting
 - Use chat feature
 - Raise your hand using the Zoom function, and you will be given permission to unmute and speak.

Please note that this public information meeting will be recorded; the recording will be a public record.

Agenda

- Introduce the Project Team
- Park Vision History
- Site Conditions
- Goals
- Proposed Park Visuals

Project Team

Department of Conservation and Recreation

Ruth Helfeld, Director, Landscape Architecture Section

Danielle Mellett, Project Manager

William A. Gode-von Aesch, Director of Flood Control Mgt.

BETA Group, Inc.

Arek Galle, RLA, AICP

Scott Ridder, RLA, LEED AP, SITES AP

Alyssa Gomes Landscape Designer

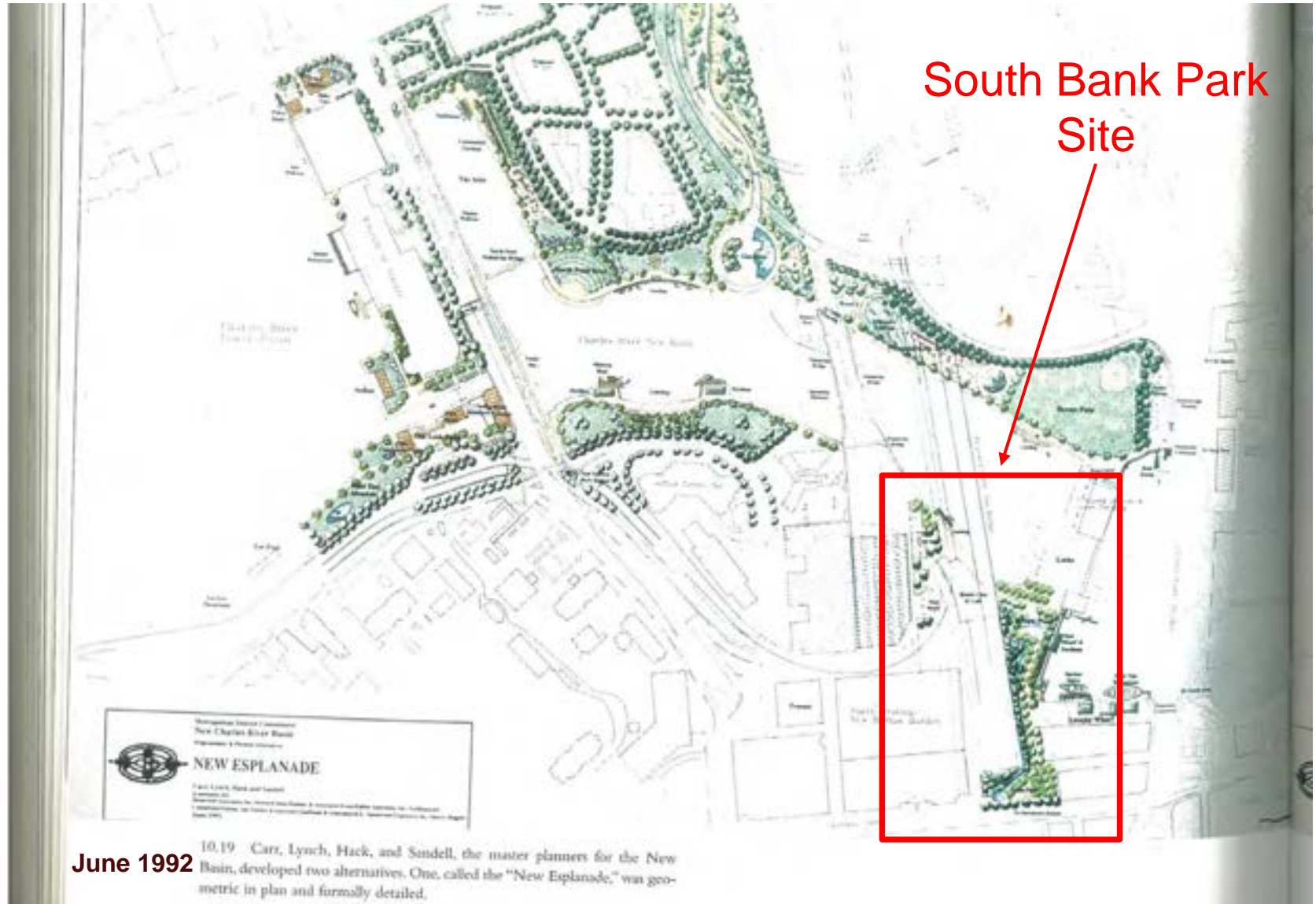
Sub Consultants

GEI Consulting Engineers

GPI Greenman/Peterson

Ronald Buia Electrical Engineering

Park vision from “Inventing the Charles River” by Karl Haglund



June 1992

10.19 Carr, Lynch, Hack, and Sendell, the master planners for the New Basin, developed two alternatives. One, called the "New Esplanade," was geometric in plan and formally detailed.

Park Origins

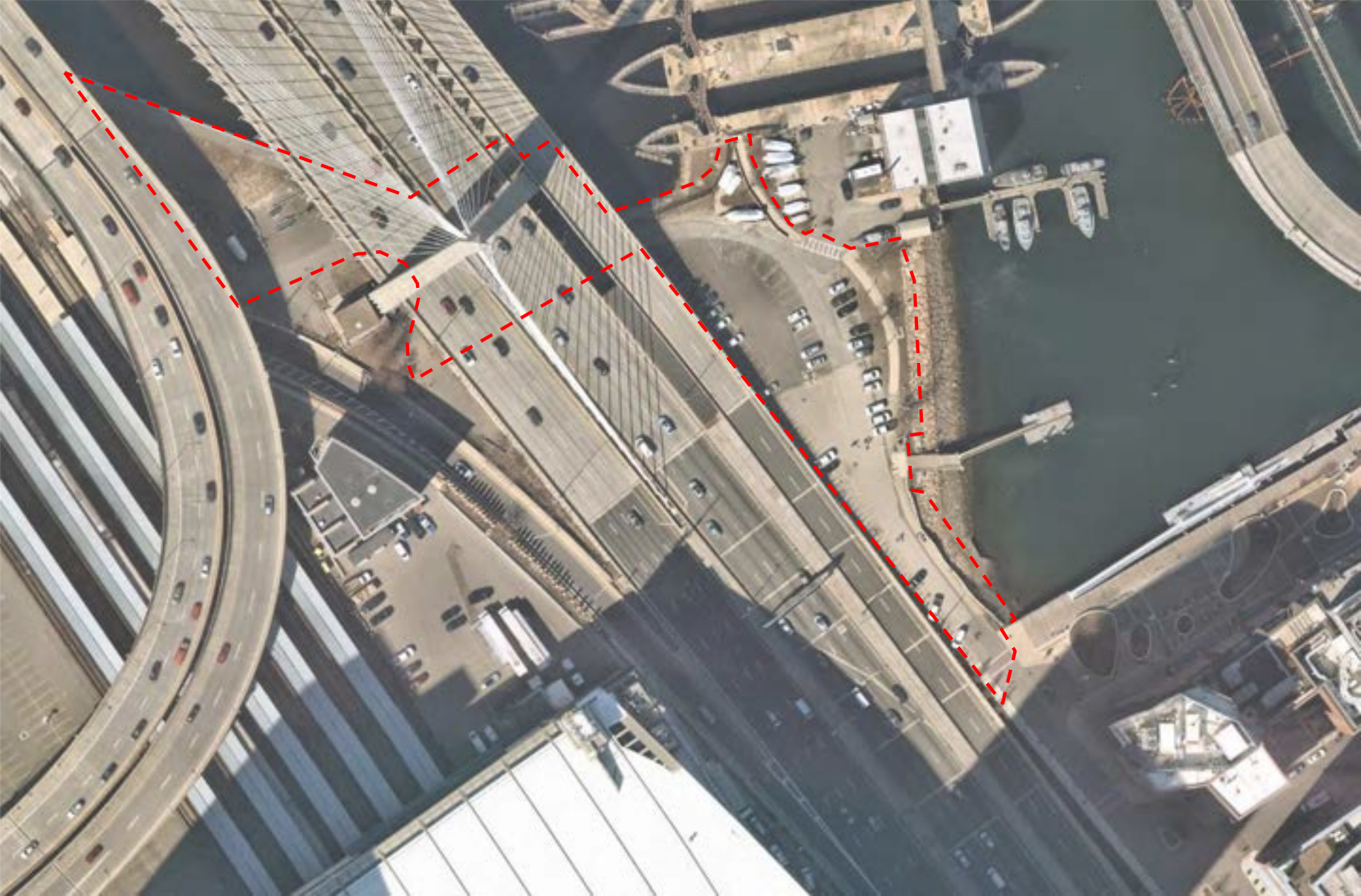
South Bank Park
Boston, MA

Site Photo from “Inventing the Charles River” by Karl Haglund



12.7 Charles River Dam, the High Bridge, and the Leonard P. Zakim Bunker Hill Bridge, 2001.







View looking north from DCR dock entrance



View looking north - Shoreline Conditions



View looking South-Space under Zakim Bridge facing south abutment



View looking South -West side of Zakim Bridge

PROJECT GOALS

- Create **public greenspace**
- Conform to Central Artery Project Permit obligations
- Maintain **functional** operational requirements for:
 - DCR Flood Control/New Charles River Dam
 - Massachusetts State Police Marine Section
 - DCR Harbor Island Parks
 - DCR Parks and Greenways
 - MBTA Emergency Egress

PROJECT GOALS

- Provide public park amenities & landscaping
- Better accommodate bicycles and pedestrians
- Reduce impervious surfaces
- Address stormwater quality concerns
- Improve coastal resiliency - enhance coastal flood protection
- Limit un-authorized use of property and improve site security
- Rehabilitate DCR marine facilities

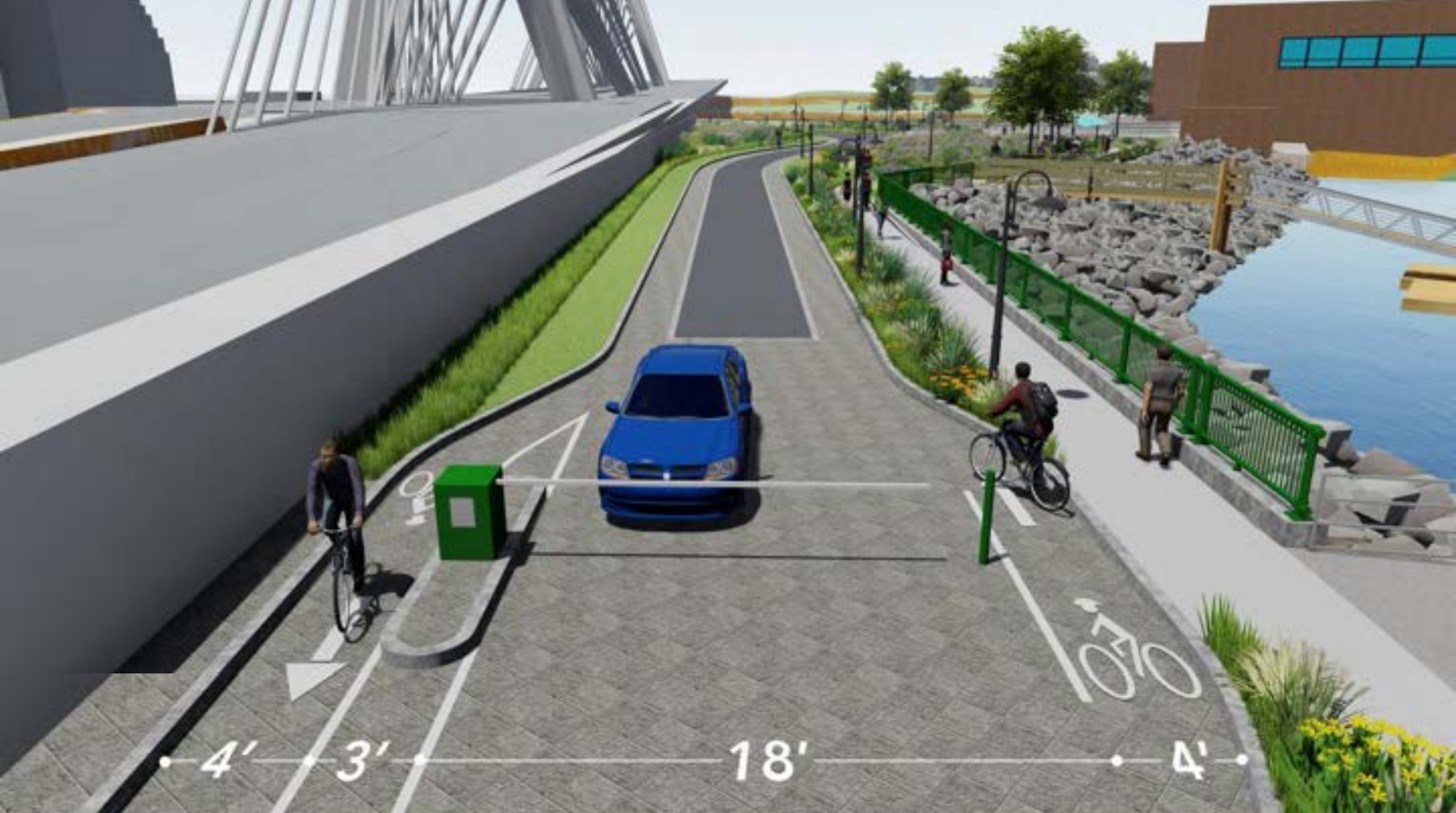
PROGRAM OVERVIEW

- Provide access and parking for:
 - DCR Flood Control
 - State Police Marine Unit
 - DCR Rangers-Harbor Island Parks
- Access for MassDOT & MBTA
- Emergency Access for TD Garden
- Maintain New Charles River Dam functional capabilities
- Enhance coastal resiliency
- Create multi-modal circulation patterns –now & future connections
- Create new public greenspace



Proposed Site Improvements

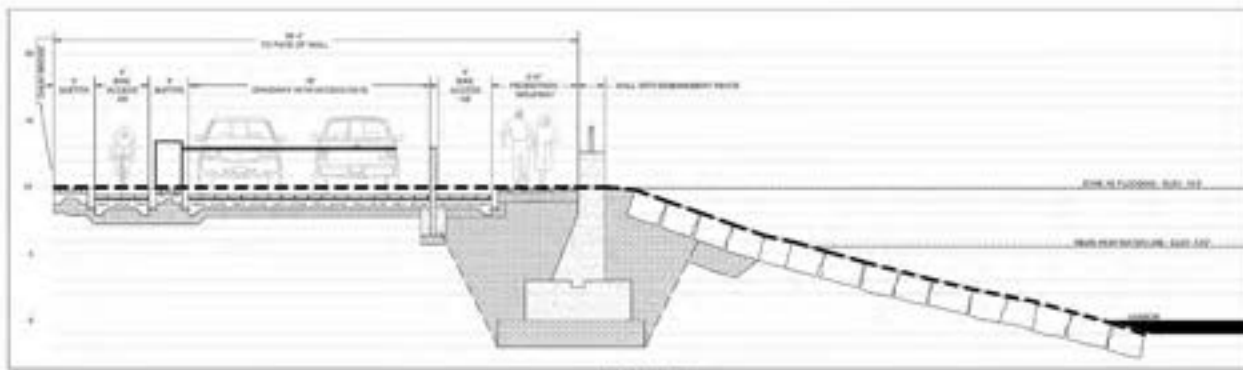
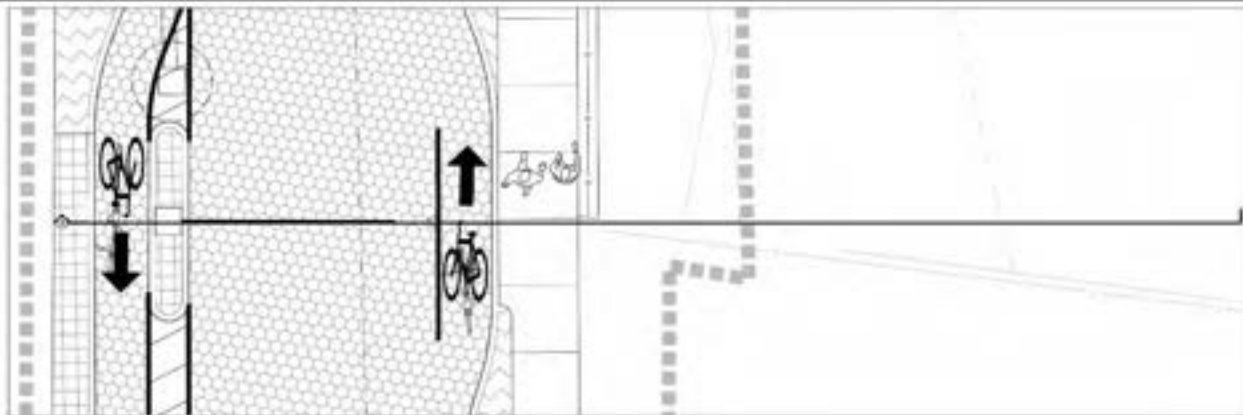
South Bank Park
Boston, MA



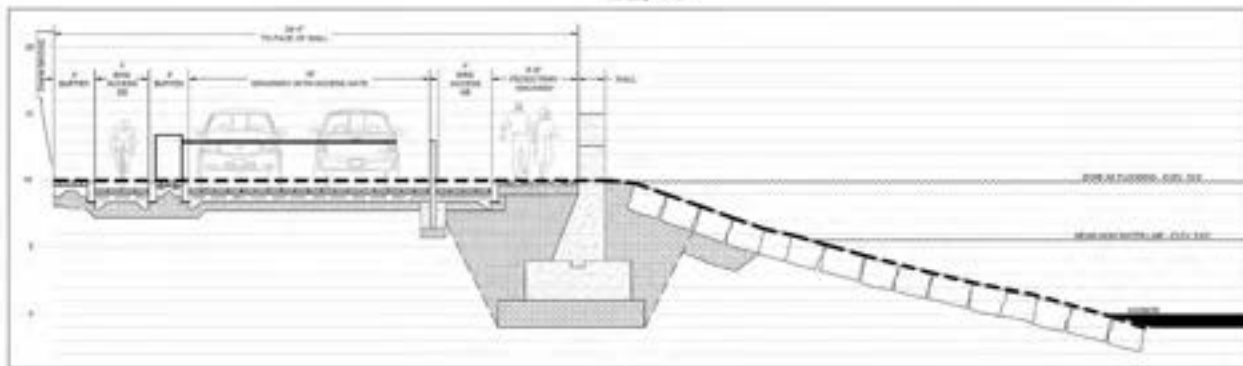
Proposed Site - Model Vehicular, Bike, and Pedestrian Access



Proposed Site - Model
Vehicular, Bike, and Pedestrian Access



SECTION A-A PHASE 1
SCALE: 1" = 1'-0"



SECTION B-B PHASE 1
SCALE: 1" = 1'-0"

PREPARED BY
BETA

WWW.BETA-MA.COM
REGISTERED PROFESSIONALS

SUBCONSULTANT



DEPARTMENT OF MASSACHUSETTS
DEPARTMENT OF
CONSERVATION AND RECREATION
SOUTH BANK PARK
Boston, MA

TITLE
SOUTH BANK PARK
SECTIONS - 1

NO.	REVISIONS	DATE

DESIGNED BY: A. GARDY
DRAWN BY: ADAM
CHECKED BY: AD
DATE: 04/21/14
SCALE: 1/8" = 1'-0"

SCALE
AS SHOWN

FOR REVIEW ONLY
SHEET NO. L10.0





Wall with embankment fence

Wayfinding sign

Overlook with Shurcliff bench

Rolling Gate

Shepherd's crook light

Meadow planting

Shade Systems shade structure with Shurcliff bench and companion seating

Granite block seatwall

Existing trees

Pavers

6' Walkway

Wall with embankment fence

Vehicle barrier gate

Flush bike access leads into driveway

Proposed Site

Eastern Improvements

South Bank Park
Boston, MA



Proposed Site - Model
Vehicular, Bike, and Pedestrian Access



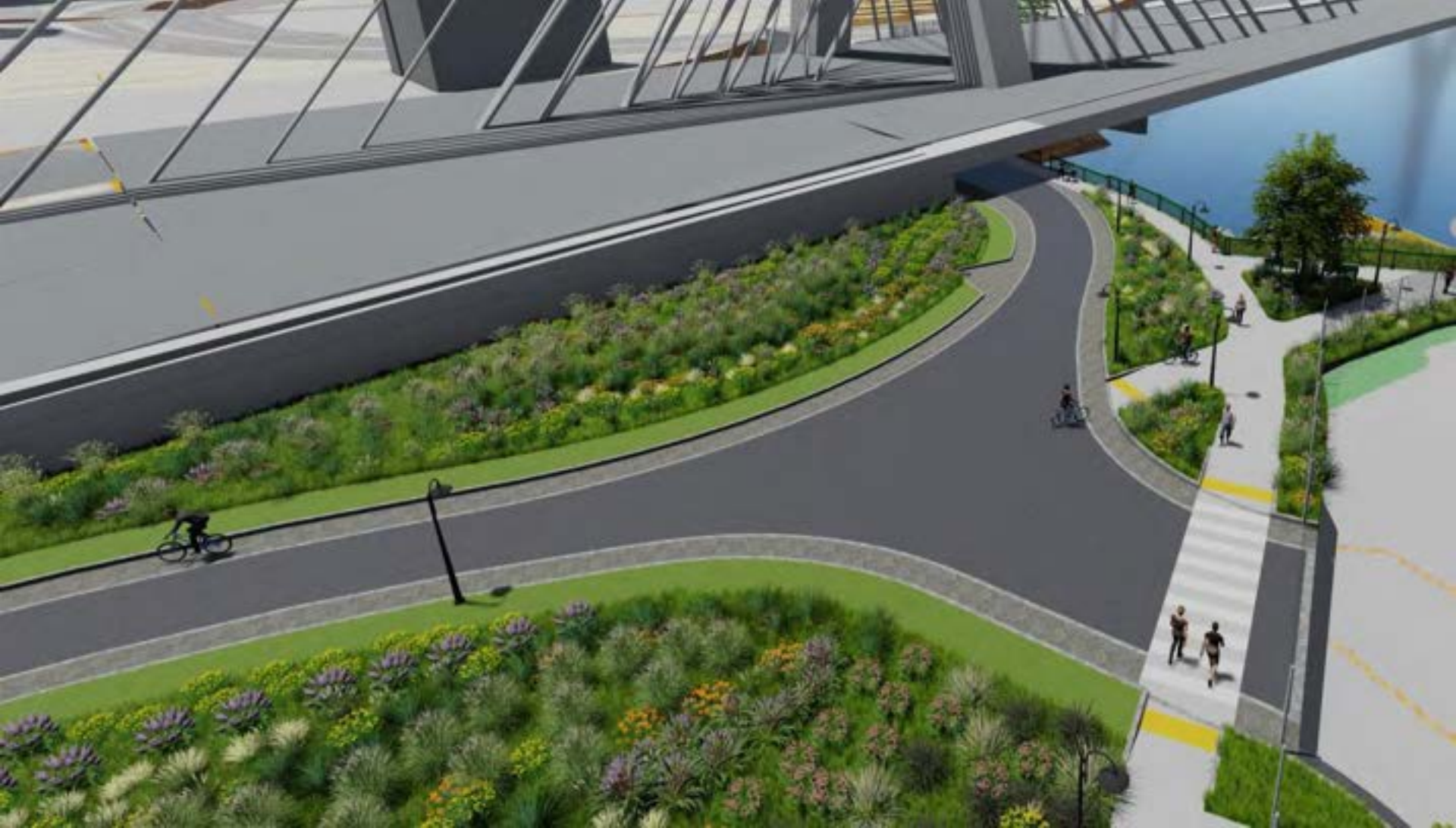
Existing Site



Proposed Site - Model Introduced Park and Green Space



Proposed Site - Model Seating with Shade Structure



Proposed Site - Model
Mixing Zone at State Police Entrance



Proposed Site
Mixing Zone at State Police Entrance

South Bank Park
Boston, MA



**Proposed Site - Model
Park Space at Entrance to Locks**



**Proposed Site - Model
Entrance to Park from locks**



Proposed Site

Designated Parking under Zakim Bridge

South Bank Park
Boston, MA



Proposed Site - Model
West side of park





Viburnum dentatum Native
Arrowwood Viburnum
Shallow fibrous roots



Myrica pensylvanica Native
Bayberry
Shallow fibrous roots



Vaccinium corymbosum Native
Blueberry
Flat shallow roots



Ilex verticillata Native
Winterberry
Shallow root system



Rhus typhina Native
Staghorn Sumac
Shallow root system



Ilex glabra Native
Inkberry
Shallow root system

NEW ENGLAND WETLAND PLANTS, INC

820 WEST STREET, AMHERST, MA 01002
 PHONE: 413-548-8000 FAX 413-549-4000
 EMAIL: INFO@NEWP.COM WEB ADDRESS: WWW.NEWP.COM

New England Showy Wildflower Mix

Botanical Name	Common Name	Indicator
<i>Schizachyrium scoparium</i>	Little Bluestem	FACU
<i>Chamaecrista fasciculata</i>	Partridge Pea	FACU
<i>Sorghastrum nutans</i>	Indian Grass	UPL
<i>Festuca rubra</i>	Red Fescue	FACU
<i>Elymus canadensis</i>	Canada Wild Rye	FACU+
<i>Elymus riparius</i>	Riverbank Wild Rye	FACW
<i>Heliopsis helianthoides</i>	Ox Eye Sunflower	UPL
<i>Coreopsis lanceolata</i>	Lance Leaved Coreopsis	FACU
<i>Rudbeckia hirta</i>	Black Eyed Susan	FACU-
<i>Liatis spicata</i>	Spiked Gayfeather/Marsh Blazing Star	FAC+
<i>Asclepias syriaca</i>	Common Milkweed	FACU-
<i>Fernoxia novboracensis</i>	New York Ironweed	FACW+
<i>Aster novae-angliae (Symphyotrichum novae-angliae)</i>	New England Aster	FACW-
<i>Eupatorium purpureum (Eutrochium maculatum)</i>	Purple Joe Pye Weed	FAC
<i>Asclepias tuberosa</i>	Butterfly Milkweed	NI
<i>Solidago juncea</i>	Early Goldenrod	
<i>Eupatorium perfoliatum</i>	Boneset	FACW

PRICE PER LB. \$86.00 MIN. QUANTITY 1 LBS. TOTAL: \$86.00 APPLY: 23 LBS./ACRE :1000 sq ft/lb

The New England Showy Wildflower mix includes a selection of native wildflowers and grasses that will mature into a colorful and vibrant native meadow. It is appropriate seed mix for roadsides, commercial landscaping, parks, golf courses, and industrial sites. Always apply on clean bare soil. The mix may be applied by mechanical spreader, or on small sites it can be spread by hand. Lightly rake, or roll to ensure proper seed to soil contact. Best results are obtained with a Spring or late Fall dormant seeding. Late Spring and early Summer seeding will benefit with a light mulching of weed-free straw to conserve moisture. If conditions are drier than usual, watering may be required. Late Fall and Winter dormant seeding require an increase in the seeding rate. Fertilization is not required unless the soils are particularly infertile. Preparation of a clean weed free seed bed is necessary for optimal results.

New England Wetland Plants, Inc. may modify seed mixes at any time depending upon seed availability. The design criteria and ecological function of the mix will remain unchanged. Price is 5/bulk pound, FOB warehouse, Plus SH and applicable taxes.



Schizachyrium scoparium
 Little Bluestem
 2-4'h x 1.5-2.5'w



Chamaecrista fasciculata
 Partridge Pea
 1-3'h x 1-3'w



Festuca rubra
 Red Fescue
 1-2'h x 1-2'w



Elymus canadensis
 Canada Wild Rye
 2-5'h x 2-3'w



Elymus riparius
 Riverbank Wild Rye
 2-4'h



Heliopsis helianthoides
 Oxeye Sunflower
 3-6'h x 2-4'w



Coreopsis lanceolata
Lanceleaf coreopsis
1-2'h x 1-1.5'w



Rudbeckia hirta
Black Eyed Susan
2-3'h x 1-2'w



Liatris spicata
Blazing Star
2-4'h x 9"-18" w



Asclepias syriaca
Common Milkweed
2-3'h x 9"-1'w



Vernonia noveboracensis
New York Ironweed
4-6'h x 3-4'w



Aster novae-angliae
New England Aster
3-6'h x 2-3'w



Eupatorium purpureum
Joe Pye Weed
5-7'h x 2-4'w



Asclepias tuberosa
Butterfly Weed
1-2.5'h x 1-1.5'w



Solidago juncea
Early Goldenrod
2-4'h x 2-3'w



Eupatorium perfoliatum
American Boneset
4-6'h x 3-4'w





Proposed Site

**South Bank Park
Boston, MA**



Preliminary Project Schedule

Complete 25% Design Update

Summer 2024

Initiate Permitting

Fall 2024

File Permits

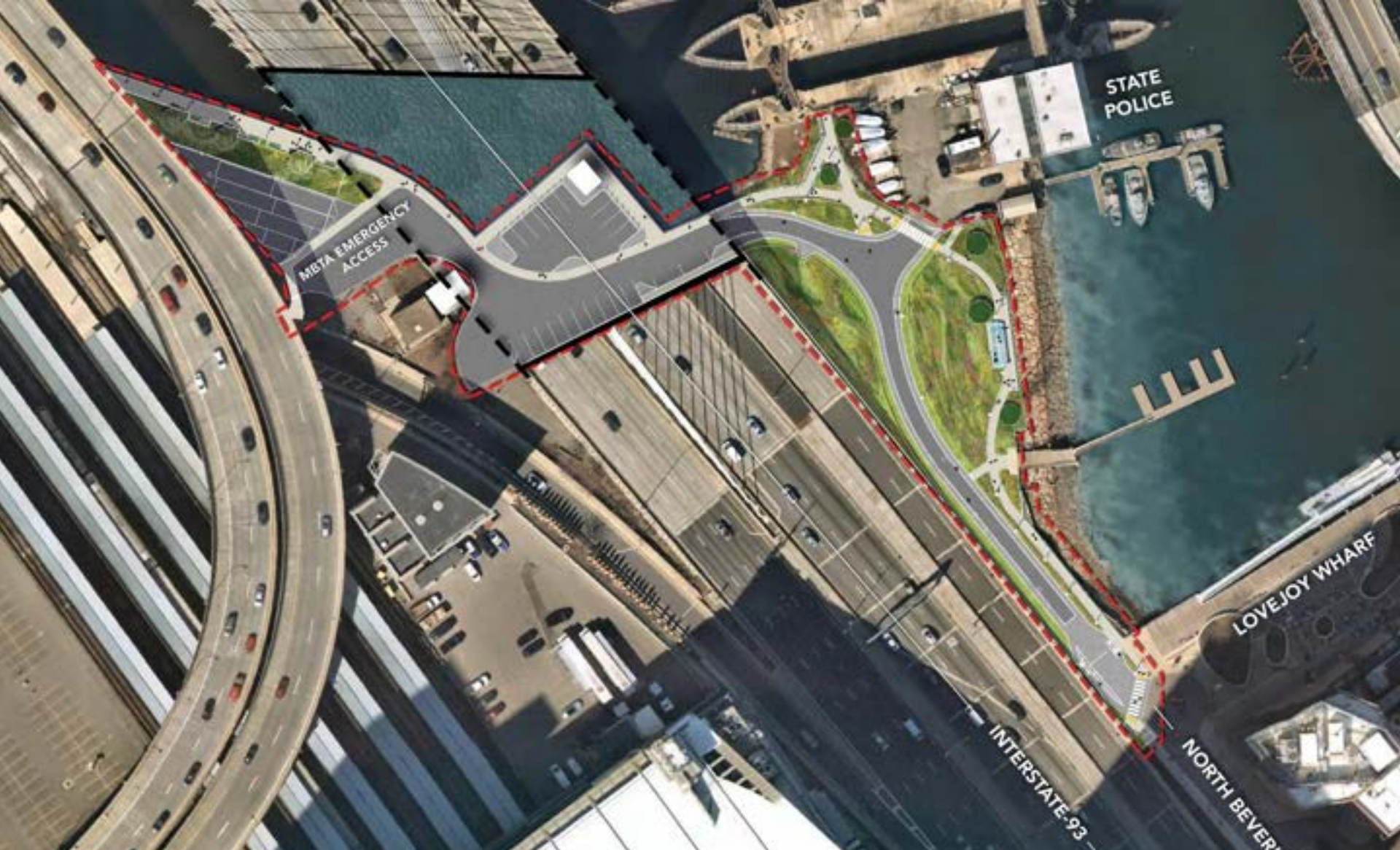
Winter 2025

Construction

Summer 2026

Additional Information

- Recording and tonight's slide deck will be available at:
 - www.mass.gov/dcr/past-public-meetings
- If you have comments on this project:
 - Submit online: www.mass.gov/dcr/public-comment
 - Deadline: Tuesday, June 25, 2024
 - Please note: the contents of comments submitted to DCR, including your name, town and zip code, will be posted on DCR's website. Additional contact information provided, notably email address, will only be used for outreach on future updates to the subject project or property
- If you wish to subscribe to a DCR general information or project related listserv: contact DCR's Office of Community Relations via email at mass.parks@mass.gov



Q+A Discussion

Thank You

South Bank Park Site Improvements

