



www.mass.gov/southcoastrail

South Coast Rail - Phase 1 New Bedford Public Meeting

September 17, 2019

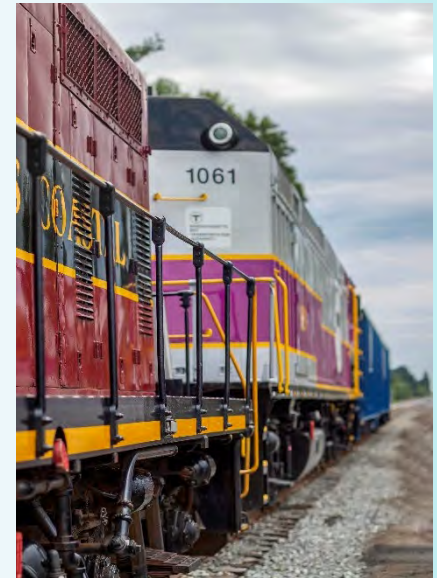


SCR Phase 1 Is Underway!



Overview: Recent Project Milestones

- Baker-Polito Administration committed to Phase 1 to advance service by the end of 2023, which is fully funded in the FY20-FY24 Capital Investment Plan
- Federal, state and local permitting are largely complete
- MBTA has hired a Program Manager, Jennifer Tabakin
- MBTA hired new PM/CM Team, AECOM
- Order of Conditions for North New Bedford Station expected to be finalized tonight
- The design contract (JV:VHB/HNTB) has been reassigned from MassDOT to MBTA



FY20 Activities Underway

- Land acquisition ongoing
- Design approaching 100%
- Special track work
 - Deliveries to start in October
- Early Action Culverts
 - 21 of 46 culverts reconstructed
 - Substantial completion in 2019
- Early Action 4 Bridges
 - Construction activities started
 - Installing earth support



Restored Track



Precast Culvert Delivery

Other Program Activities

- Finalize agreements with railroad and utilities
- Advancing a portion of Northern Corridor 30% Design
- Preparing to advertise construction contracts in 2nd half of Fiscal Year 2020
- Ongoing monthly coordination meeting with City of New Bedford
- Working with the City on Technical Assistance



Proposed Weekday Service under Phase 1

	DAILY INBOUND	DAILY OUTBOUND	TOTAL	PEAK PERIOD
New Bedford	7	7	14	3 Morning Peak Trains 3 Evening Peak Trains
Fall River & Freetown	6	6	12	3 Morning Peak Trains 3 Evening Peak Trains
Taunton & Middleborough	13	13	26	6 Morning Peak Trains 6 Evening Peak Trains
TOTAL	13	13	26	6 Morning Peak Trains 6 Evening Peak Trains

SCR Benefits

- Thousands of construction and net new jobs expected
- Opens the housing market
- Boosts economic vitality & job opportunities
- Improved freight infrastructure
- Station area development potential
- Savings in travel costs, accessibility to jobs & gains in business and labor productivity
- Connections to tourism, education and health care



Two Stations: New Bedford and North New Bedford

- Gateway to downtown and tourist areas
- Serve both residential and business districts
- Potential to support the Working Waterfront
- Multimodal connections planned at both stations
- Will foster new development



North New Bedford Station at Church Street

Original location (King's Highway) had several design challenges:

- Significant drainage issues
- Impacted a 30" inch sewer
- Required shared parking

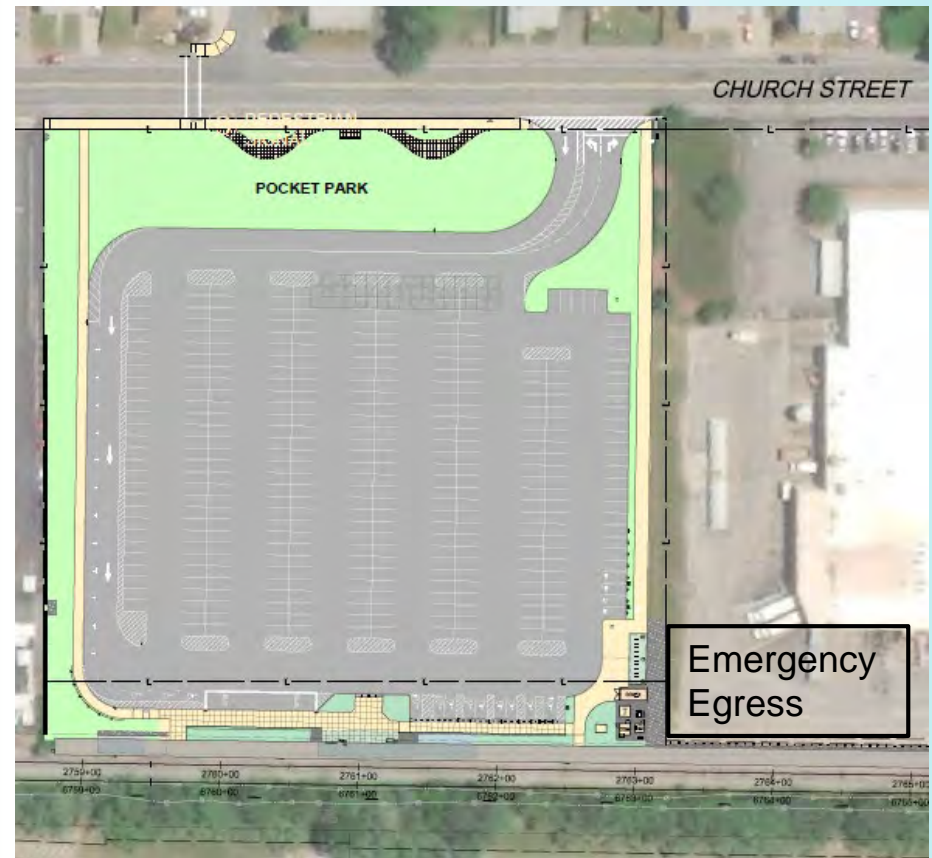
Design allows for future connection over the tracks to the retail site

Includes a pocket park

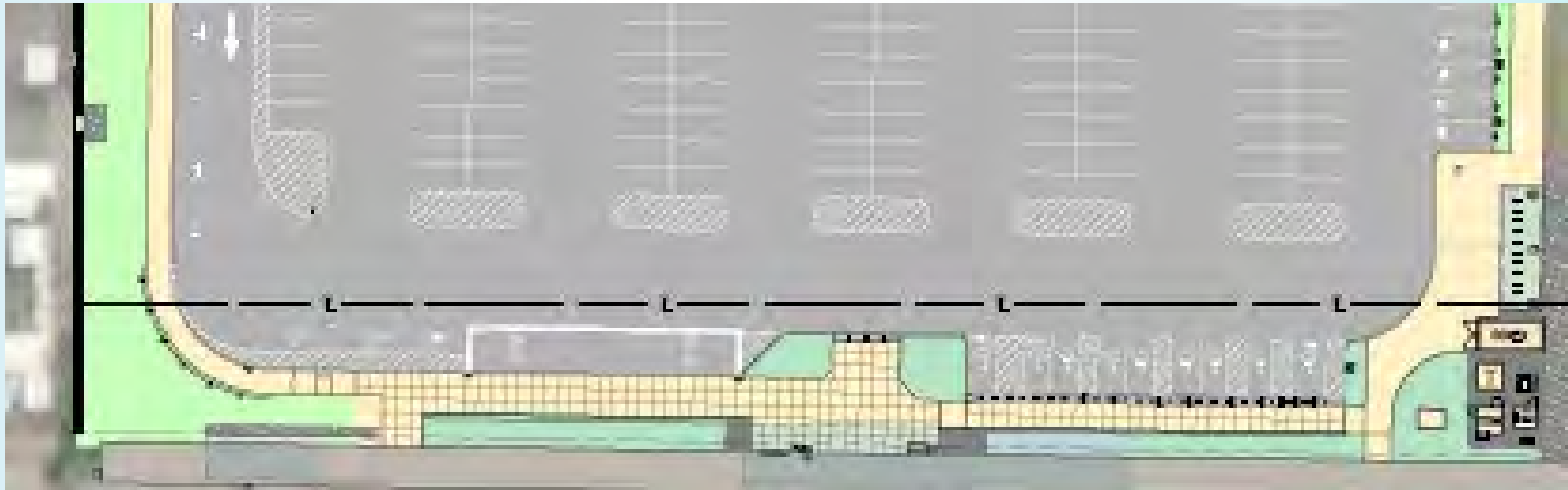
North New Bedford Station

UNIQUE ELEMENTS

- Neighborhood Connectivity
- Access from Church Street for Vehicles, Bikes and Pedestrians
- Emergency Egress provided from the south end of the Platform
- Parking spaces - 354



North New Bedford Station



Elements

- 800' platform
- Platform canopy 182'
- 22 bike park spaces
- Accessible drop-off / pick-up
- Kiss and ride spaces
- Bus Stop

Accessible Parking

- 8 required, 8 provided accessible parking spaces
- +1 accessible EV charging space

Electric Vehicle Charging

- Four EV charging Spaces

North New Bedford Station Roadway

- 40% of ridership is west of station
- 60% of ridership is east of station
- Construct pedestrian signal at Church Street and Carlisle Street
- Upgrading traffic signals at Church Street and Nash Road
- Reconstruct 2800' of sidewalk on west side of Church Street



New Bedford Station (formerly Whale's Tooth)



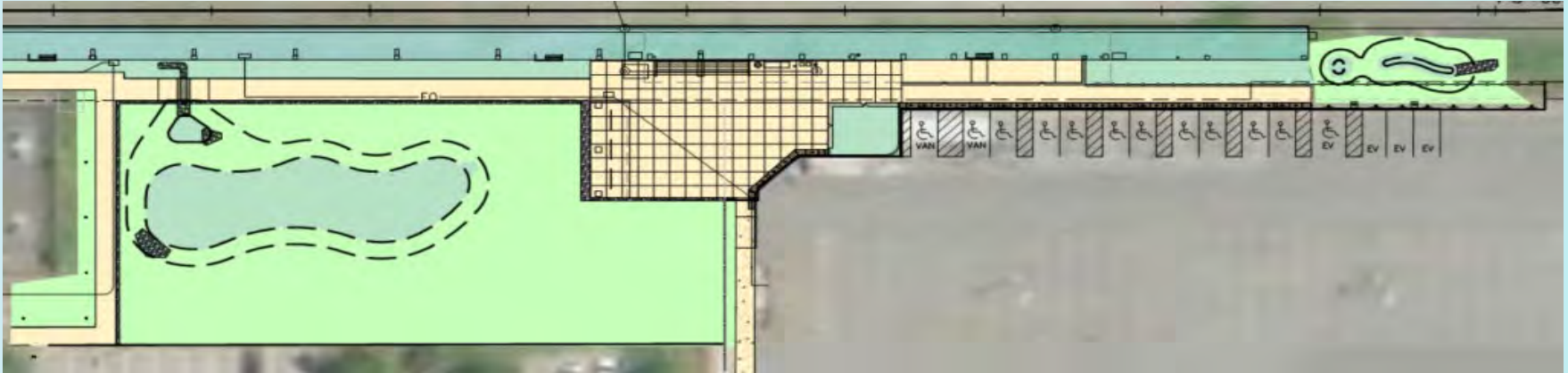
New Bedford Station

Vehicles, Bikes, & Pedestrians

- Acushnet Avenue parking lot entrance provides access to the station for vehicles and pedestrians.
- Sidewalk from Acushnet Avenue provides pedestrian access to the station.
- Ped Bridge over Route 18
- Parking spaces – 352
- Shared parking



New Bedford Station



Elements

- 800' platform
- Platform canopy 167'
- 22 bike park spaces
- Accessible drop-off / pick-up
- Bus Stop on Acushnet Ave

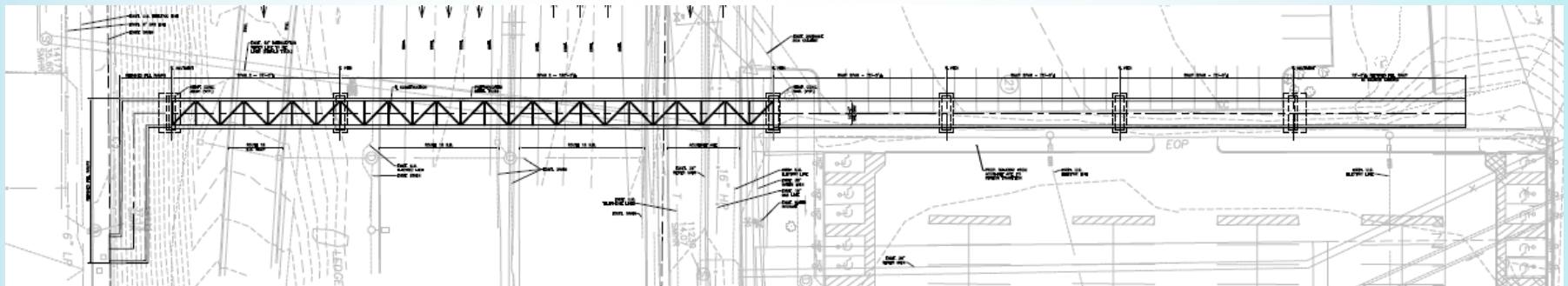
Accessible Parking

- 8 required, 11 provided accessible parking spaces
- +1 accessible EV charging space

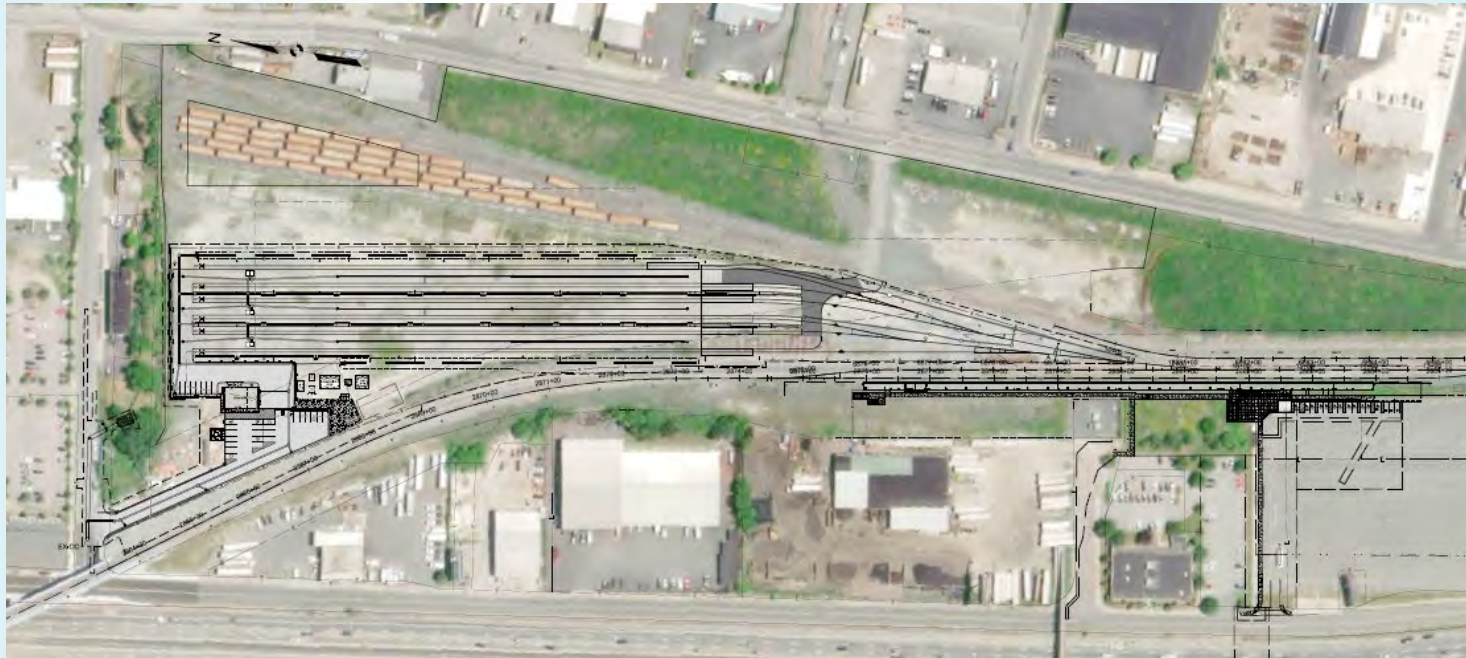
Electric Vehicle Charging

- Three EV charging Spaces

Pedestrian Bridge over Route 18

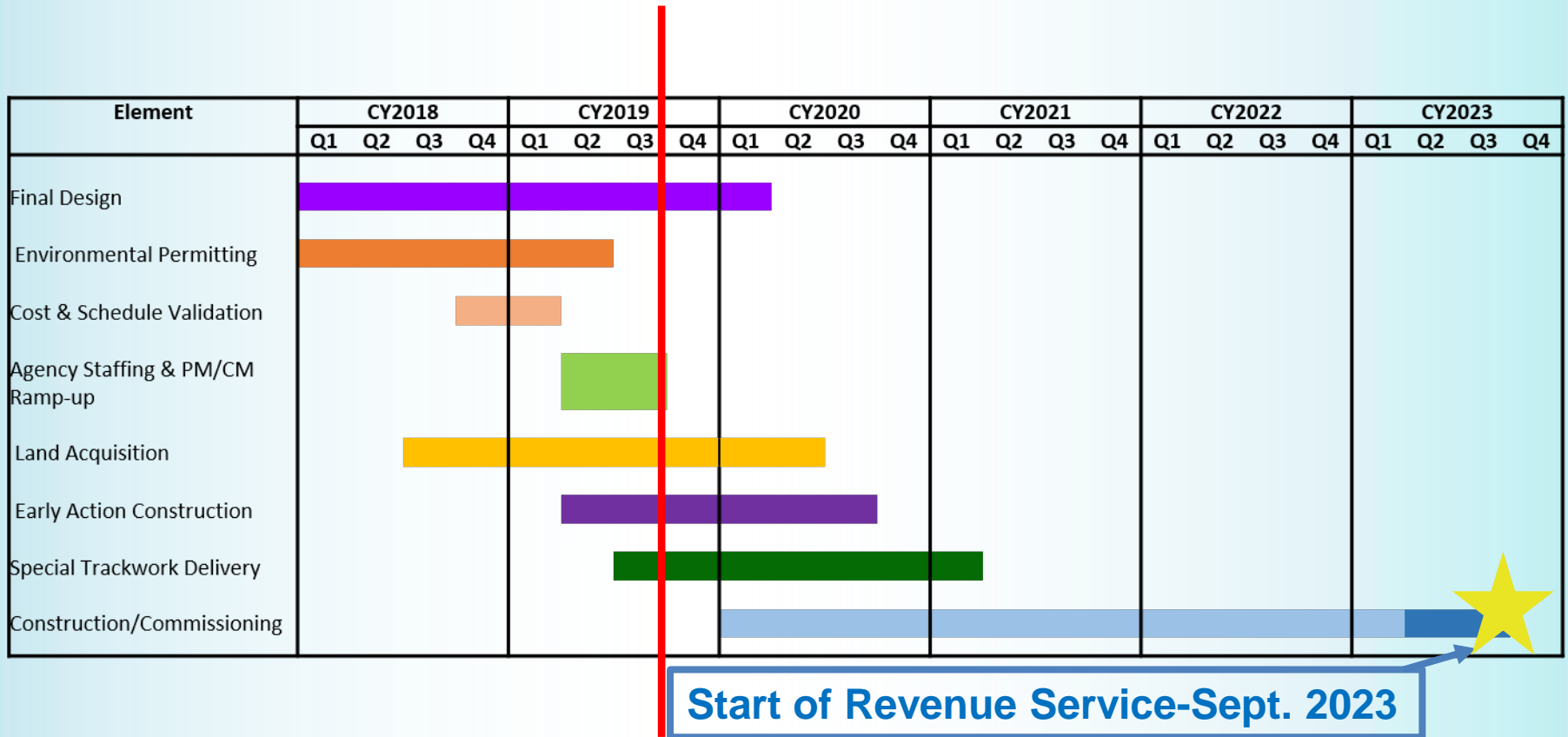


Wamsutta Layover Facility



- 6 Tracks
- Crew quarters
- Employee parking
- Gated facility

Phase 1 Schedule

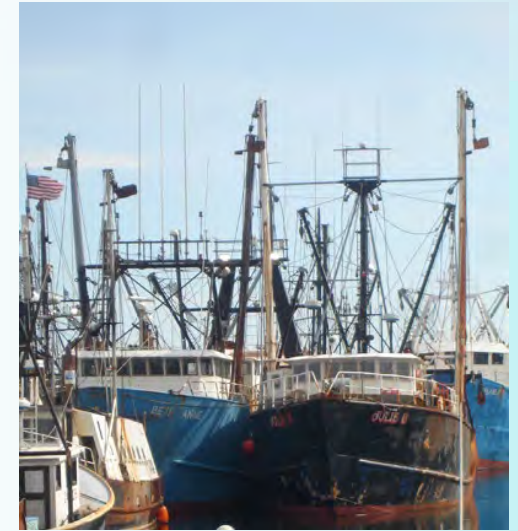


Reconnecting a Region, Protecting its Beauty . . .



*Photos by John
Robson*

... And Enhancing Its Economy



How to Follow SCR

- Visit the project website:
www.mass.gov/southcoastrail
- Sign up for project updates and construction information
- Send us comments at
SouthCoastRail@dot.state.ma.us



Transit Oriented Development Study



City of New Bedford Department of City Planning

133 William Street • Room 303 • New Bedford, Massachusetts 02740
Telephone: (508) 979.1488 • Facsimile: (508) 979.1576

What is Transit Oriented Development?

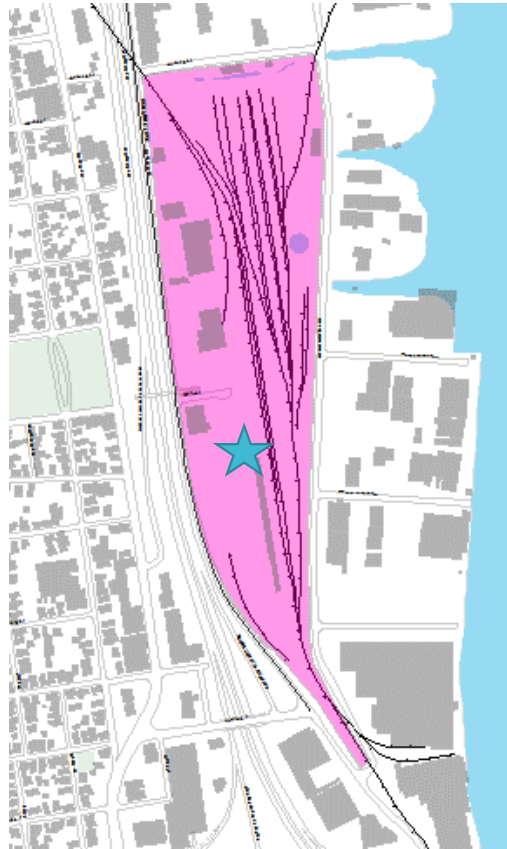
- **Transit-oriented development** is a type of community development that includes a mixture of **housing, office, retail and/or other amenities** integrated into a walkable neighborhood and located within a quarter to a half-mile of high-quality public transportation (walkable zone).



2 TOD Sites

- **NEW BEDFORD**
(Downtown)
- **NORTH NEW BEDFORD**
(Church Street)

New Bedford TOD



- Proximity to Downtown
- Multi-modal connectivity
- Maritime/MUB/Residential

North Station TOD



- Access to highway/retail
- Neighborhood connection
- MUB/Large-Scale Retail

Approx. 2 Miles Apart

Transit Oriented Development Study

Scope of Work and Schedule:

- *Phase 1: Existing Conditions Analysis*
- *Public Meeting #1: Existing Conditions Analysis Presentation*

Fall-Winter 2019

- *Phase 2A: Future Conditions Analysis*
- *Public Meeting #2: Future Conditions Analysis Presentation*

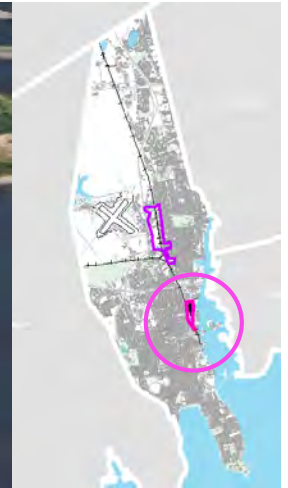
Spring-Summer 2020

- *Phase 2B: Development & Implementation Plan*
- *Public Meeting #3: Final Development & Implementation Plan Presentation*

Fall-Winter 2020

NEW BEDFORD STATION

- Proximity to Downtown
- Desired Uses: Maritime/MUB/ Residential
- Multi-modal connections nearby (SRTA, bus routes, Blue Lane, etc. + Planned Pedestrian Bridge)
- Located Within Opportunity Zone Tracts
- Neighborhood connectivity



NORTH NEW BEDFORD STATION

- Proximity to Rt. 140
- Desired Uses: MUB, Large-Scale Retail
- New Platform Location
- Planning Assessment (impacts to neighborhood, circulation, etc.)
- Community Outreach

