

# **Massachusetts Bay Transportation Authority**

## **South Coast Rail Quarterly Update & New Bedford Mainline Contract Vote**

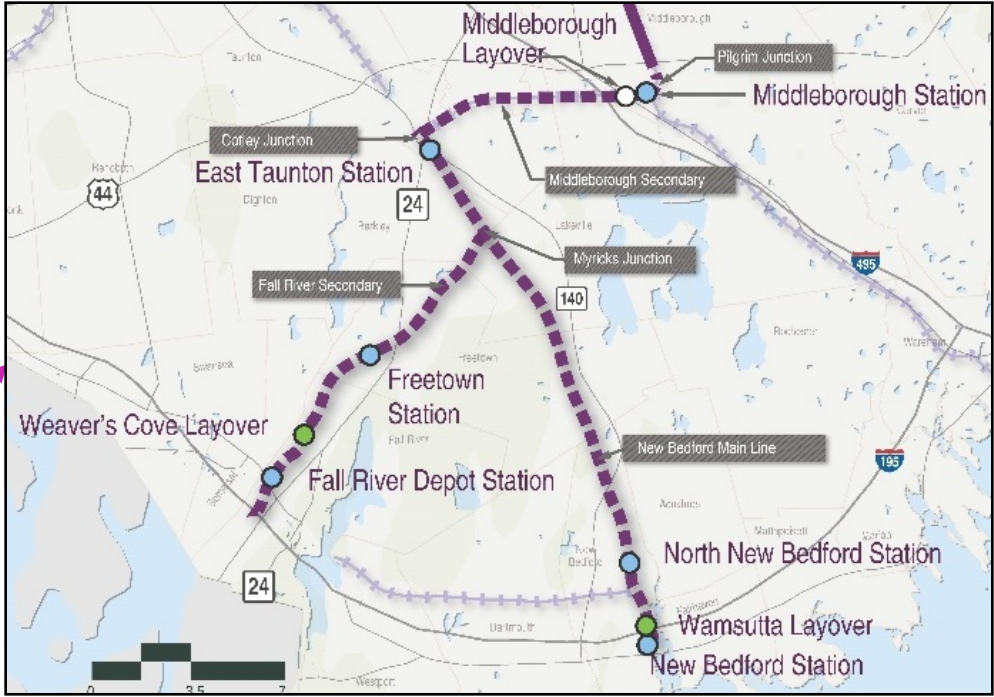
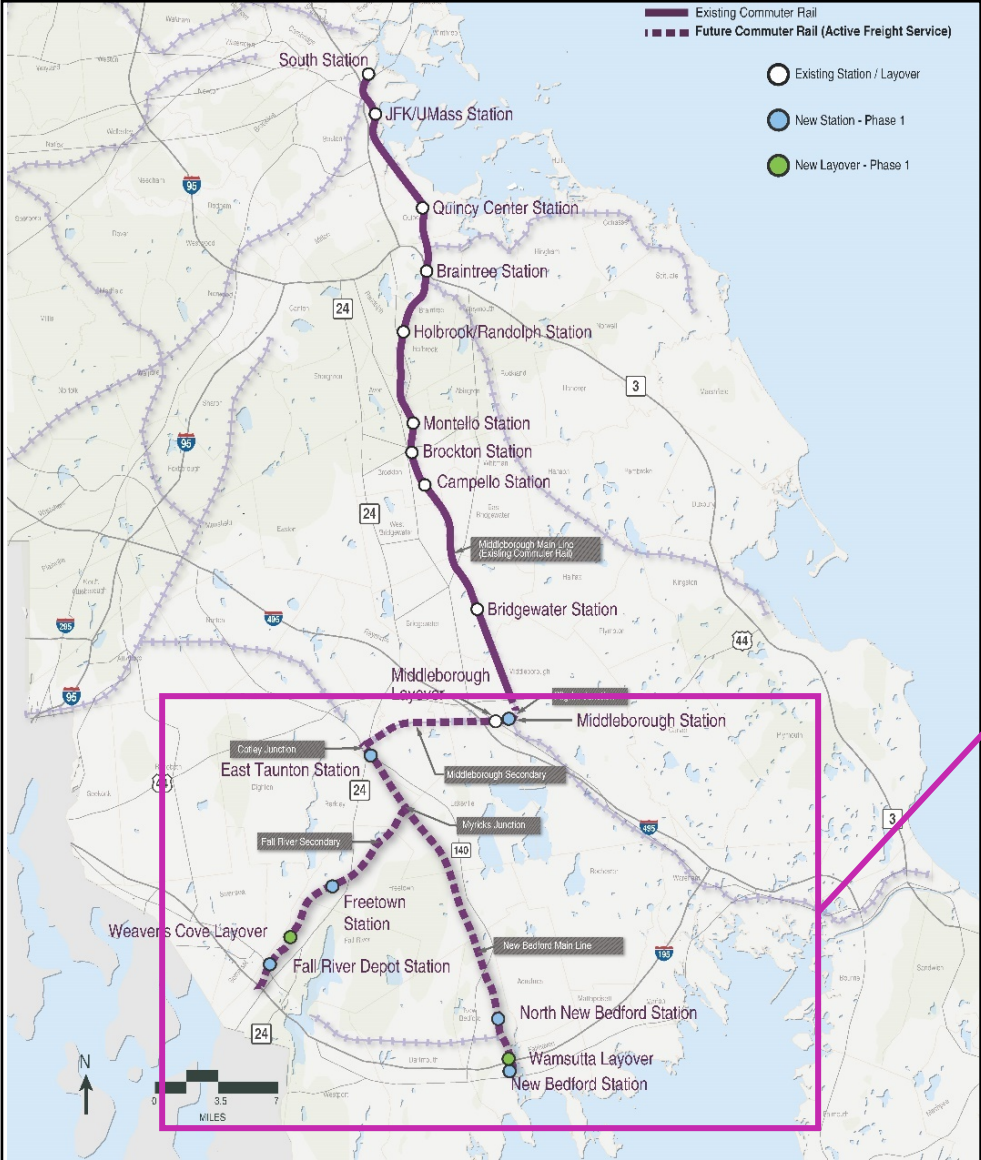
---

Joint Meeting of the MassDOT Board & Fiscal and Management Control Board

August 24, 2020

Jennifer Tabakin

# Phase 1



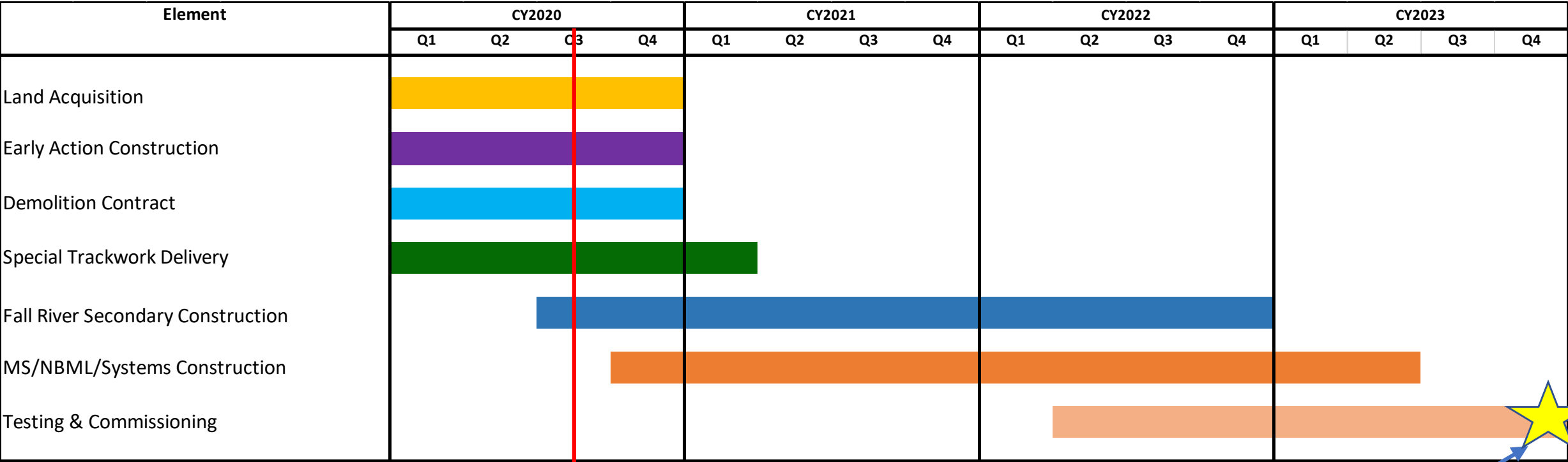
# Quarterly Update

---

- Requesting FMCB approval to award second major package, Middleborough Secondary and New Bedford Main Line, bids opened August 2020.
- **First major construction package**, Fall River Secondary issued NTP in August.
- Three contract packages on schedule for summer and fall completions: 46 culvert contract; four bridges and demolition of nine structures.
- Track material procurement and purchase of bi-level coaches is ongoing.
- Design Phase work includes: Traffic mitigation – design completion 2021; Design for the New Bedford Pedestrian Bridge – design completion 2021 and start of full-build design in FY 2021.
- SCR Team welcomes new staff and consultants.



# Phase 1 Construction Schedule



Start of Service Goal  
(Late 2023)



# Middleborough Secondary/New Bedford Mainline Construction Award

## Scope

- 24.1 miles of track
- 4 new stations
- Layover facility in New Bedford
- 18 grade crossings
- 11 culverts
- Systems and infrastructure
- Advertised early May 2020
- Bids opened on August 13, 2020

## Schedule

39 months of construction

NTP 1: Sept 2020, submittals

NTP 2: Nov 2020, construction

MSNB Turnover – June 2023

FRS Turnover – August 2023

## Budget

Engineer Estimate: \$398M

Low Bid: \$403M



# Middleborough Secondary/New Bedford Mainline Procurement

---

- Project advertised on April 17, 2020
- Engineer's Estimate was \$398,000,000
- Bid Opening on August 13, 2020
- 3 Bids were received

**\$403,470,002**

**SCR Constructors: Middlesex/Tutor Perini JV**

\$426,198,000

Barletta/O & G Industries, Joint Venture

\$468,949,000

Skanska/ DW White, Joint Venture





# Four Stations in Middleborough Secondary/New Bedford Line Contract



*Middleborough Station, Pilgrim Junction*



*New Bedford Station*



*East Taunton Station, Route 140*



*Church Street Station*



# East Taunton Station and Route 140/24 Project

- SCR scope includes:
  1. Lengthening Route 24 Bridge over NB Main Line for future double track
  2. Traffic and signals work at 140/24 interchange.
- SCR's scope added to DOT interchange project, which includes reconstructing two other Route 24 bridges, new ramp and intersection work, providing \$27M in funds.
- Benefits include minimized disruptions, cost and coordination
- Construction activity on SCR's East Taunton Station and the 140/24 interchange will coincide throughout 2021- 2023 – language added to each contract to promote coordination.
- Construction administration on each project will coordinate to maintain order and provide quality results





# Fall River Secondary – Ongoing Construction

## Scope

- 12.1 miles of track
- 2 new stations
- Layover facility in Fall River
- 8 bridges
- 10 grade crossings
- 10 culverts
- Infrastructure

## Schedule

- 30 months of construction
- Notice to proceed I: June 16, 2020
- Notice to proceed II: August 17, 2020
- Turnover Freetown Segment to MS/NB Contractor – April 2022
- Turnover Fall River Segment to MS/NB Contractor – September 2022

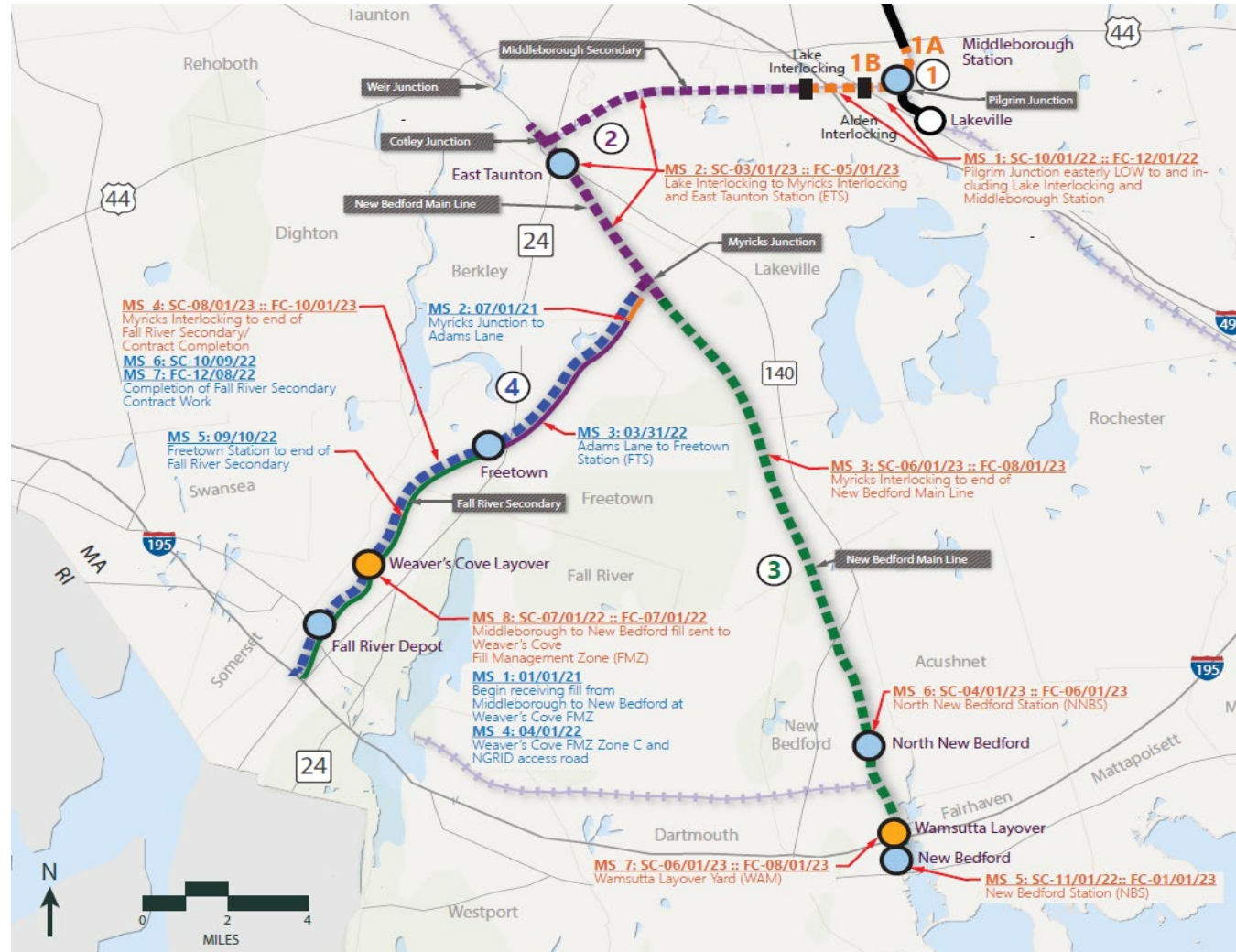
## Budget

Contract award: \$158,975,000



# Key Contract Interfaces

- Fill Management Plan
- Myricks Junction
- Signal and PTC Equipment
- Pilgrim Junction
- Testing and Commissioning



# South Coast Rail Construction Accomplishments

## Early Action Culverts

- Substantial completion
- MassDOT Contract: 106341 – JF White (\$19.1M)
- Substantial Completion – June 2020
  - 46 Culverts

## Early Action 4 Bridges

- Work ongoing
- MassDOT Contract: 609200 - JF White (\$26.1M)
- Substantial Completion – September 2020
  - Berkley – Cedar Swamp River, Cotley River North & Cotley River South Bridges
  - Freetown - Fall Brook Bridge

## Early Action Demolition

- Work Ongoing
- K78CN02 – DW White (\$1.7M)
- Substantial Completion – November 2020
  - Demolition of nine structures



# South Coast Rail Authorized Funds

| SCR Funding – MBTA and DOT |  |                  |
|----------------------------|--|------------------|
| FMCB Approval              | Interagency Service Agreement Funding          | Funds Authorized |
| 1/24/19                    | SCR MBTA Phase I and FB Design (S19001)        | 862,750,000      |
| 1/24/19                    | <i>Construction (S19001 Am2)</i>               | 632,750,000      |
| 11/13/19                   | <i>Professional Services (S19001 Am1)</i>      | 122,000,000      |
| 5/7/19                     | <i>CM/PM, Force, land, admin (S19001 base)</i> | 108,000,000      |
| 11/27/19                   | SCR 16 Coaches (S2001)                         | 69,037,292       |
| 6/30/14                    | SCR Early Design (S15001)                      | 27,094,942       |
| 8/1/2015                   | Owner Rep (S15004)                             | 10,000,000       |
|                            | MBTA Project Administration                    | 20,000,000       |
| MBTA Authorized Funds      |  | \$988,882,234    |
| DOT SCR Committed Funds    |  | \$153,679,000    |
| SCR TOTAL Authorized       |  | \$1,142,562,348  |





# South Coast Rail Budget FY20 – FY25

| SCR Cash Flow – FY20-25         |           |
|---------------------------------|-----------|
| Construction                    | \$651,497 |
| Professional Services           | 119,669   |
| Material Procurement            | 9,845     |
| Vehicle Procurement             | 76,038    |
| Noise Mitigation                | 11,529    |
| Land Acquisition                | 21,061    |
| Third Party Force Account       | 25,135    |
| MBTA Proj Admin                 | 22,000    |
| Program Contingency             | 26,555    |
| SCR FY20-FY25 Phase I TOTAL     | 963,329   |
| Full Build Design FY21-FY25     | 88,662    |
| SCR FY20-FY25 Ph 1 and FB TOTAL | 1,051,982 |
| SCR FY17-FY19                   | 90,580    |
| TOTAL                           | 1,142,562 |



| Construction – FY20-25          |           |
|---------------------------------|-----------|
| DOT Culverts                    | \$19,579  |
| DOT Four Bridges                | 23,797    |
| Building Demolition             | 1,745     |
| DOT Rt 24 Bridge                | 27,557    |
| New Bedford ML / MS and Signals | 403,470   |
| Fall River Secondary            | 158,975   |
| New Bedford Pedestrian Bridge   | 8,578     |
| Traffic Mitigation              | 7,798     |
| TOTAL                           | \$651,497 |



# SCR Capital Spending Plan FY20 – FY25

## SCR Capital Spend Plan

|                |                    |
|----------------|--------------------|
| Fiscal Year 20 | 83,562             |
| Fiscal Year 21 | 132,560            |
| Fiscal Year 22 | 357,738            |
| Fiscal Year 23 | 360,947            |
| Fiscal Year 24 | 88,094             |
| Fiscal Year 25 | 29,081             |
| <b>Total</b>   | <b>\$1,051,982</b> |

- Contract package resequencing
- Land acquisition for major contracts less than projected
- COVID-19 delayed delivery of turnouts

## SCR MBTA

|                |               |
|----------------|---------------|
| Fiscal Year 20 | 35.10         |
| Fiscal Year 21 | 114.30        |
| Fiscal Year 22 | 350.80        |
| Fiscal Year 23 | 354.00        |
| Fiscal Year 24 | 81.10         |
| Fiscal Year 25 | 22.20         |
| <b>Total</b>   | <b>957.50</b> |

## SCR Mass DOT

|                |              |
|----------------|--------------|
| Fiscal Year 20 | 48.50        |
| Fiscal Year 21 | 18.30        |
| Fiscal Year 22 | 6.90         |
| Fiscal Year 23 | 6.90         |
| Fiscal Year 24 | 6.90         |
| Fiscal Year 25 | 6.90         |
| <b>Total</b>   | <b>94.40</b> |



# South Coast Rail Awarded Construction Contracts

| Construction Award        | Contractor                   | FY2019      | FY2020       | FY2021       | FY2022      |
|---------------------------|------------------------------|-------------|--------------|--------------|-------------|
| DOT Early Action Culverts | JF White                     | 18.3        |              |              |             |
| DOT Four Bridges          | JF White                     | 22.6        |              |              |             |
| DOT Track Material        | Progress Rail                | 9.6         |              |              |             |
| DOT Route 24 Bridge       | TBD                          |             |              | 27           |             |
| 16 Bi Level Coaches       | Hun R.                       |             | 69.1         |              |             |
| Demolition                | DW White Const               |             | 1.7          |              |             |
| Fall River Secondary      | TBD                          |             | 159          |              |             |
| New Bedford / Middleboro  | TBD                          |             |              | 403          |             |
| New Bedford Ped Bridge    | TBD                          |             |              |              | 8.7         |
| Traffic Mitigation        | TBD                          |             |              |              | 7.8         |
| Third Party Force Account | 51 Utilities,<br>6 Railroads |             | 4.3          | 20.7         |             |
| <b>TOTAL AWARDED</b>      |                              | <b>50.5</b> | <b>235.1</b> | <b>450.7</b> | <b>16.5</b> |

- ✓ \$285.6M SCR construction, material contracts awarded through FY20.
- ✓ In the first quarter of FY 21, an additional \$450.7M contracts will be awarded.
- ✓ By the end of June 2021, over \$736.3M in SCR construction, material work committed.



# Request of the Fiscal and Management Control Board

---

South Coast Rail program staff request that the Fiscal and Management Control Board authorize the MBTA General Manager, or his designee, to execute MBTA Construction Contract No. **K78CN04** for an amount not to exceed **\$403,470,002.00** with **SCR Constructors**.





South Coast Rail Project Web Site: [www.mass.gov/southcoastrail](http://www.mass.gov/southcoastrail)



*New Bedford Station*

