



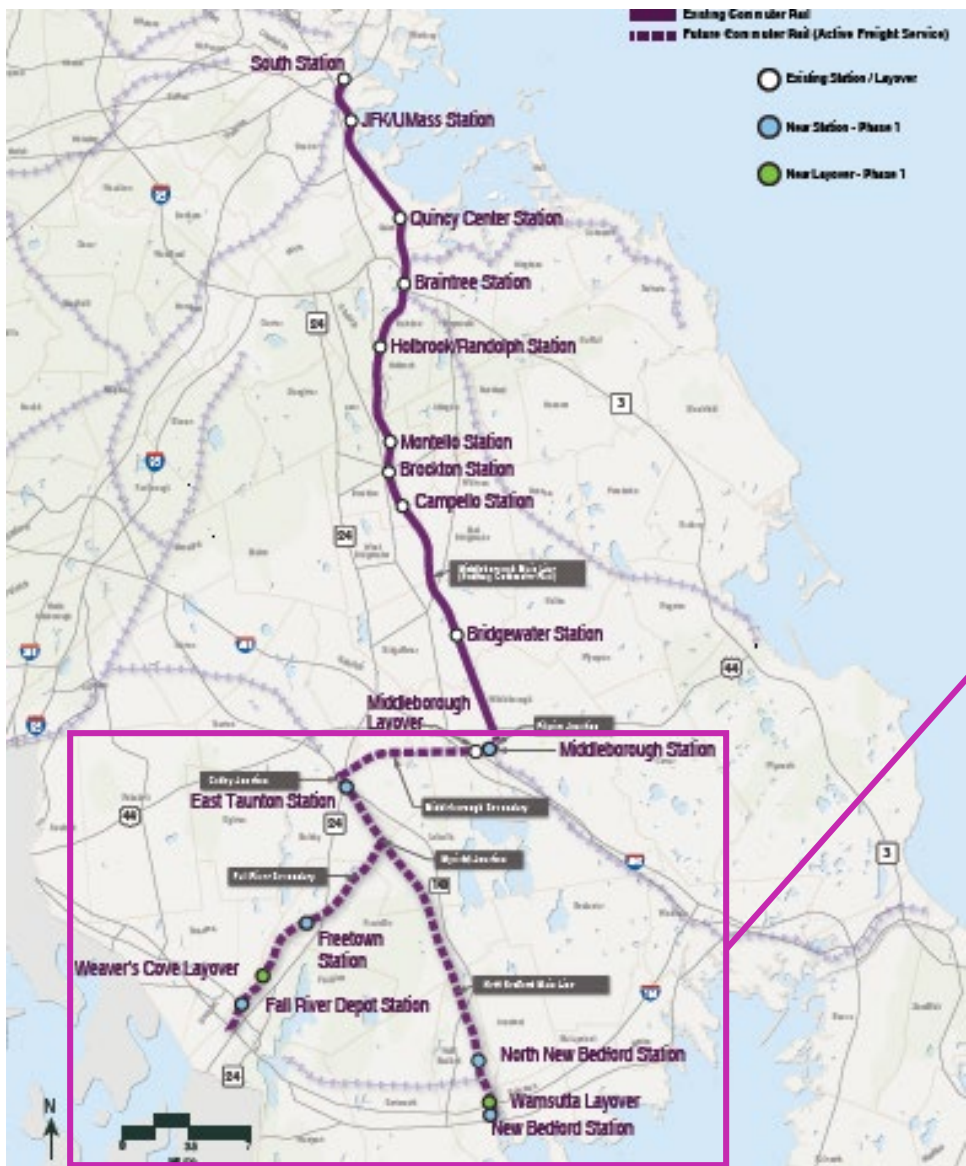
**Massachusetts Bay  
Transportation Authority**

## South Coast Rail Program Update

---

MassDOT Capital Programs Committee  
October 24, 2019  
Jennifer Tabakin

# Phase 1



# Phase 1 Infrastructure

	Fall River Secondary	MS/NBML & Systems	Total
ROW Miles	12.1	24.1	36.2
Track Miles	12.9	35.1	48.0
Stations	2	4	6
Layovers	1	1	2
Grade Crx	10	18	28
Bridges	8	6	14
Interlockings	4	14	18



# Six Stations

	Parking Spaces
Middleborough	500
East Taunton	363
North New Bedford*	355
New Bedford	352
Freetown	113
Fall River Depot*	220

\* Terminal Station



# Layovers: Weaver's Cove & Wamsutta

- 6 tracks
- Crew quarters
- Employee Parking



Weaver's Cove Layover Facility



Wamsutta Layover Facility



# Systems

- 28 Grade Crossings:  
Middleborough Secondary/New Bedford Main Line (18) and Fall River Secondary Line (10)
- 18 Interlockings
- Positive Train Control



Cantilever

Existing Grade Crossing



# Bridges

- 4 undergrade bridges in construction on New Bedford Main Line
- New Bedford pedestrian bridge
- 8 undergrade bridges on Fall River Secondary Line
- Rt. 24 Highway overhead bridge

Collins Street,  
East Elevation

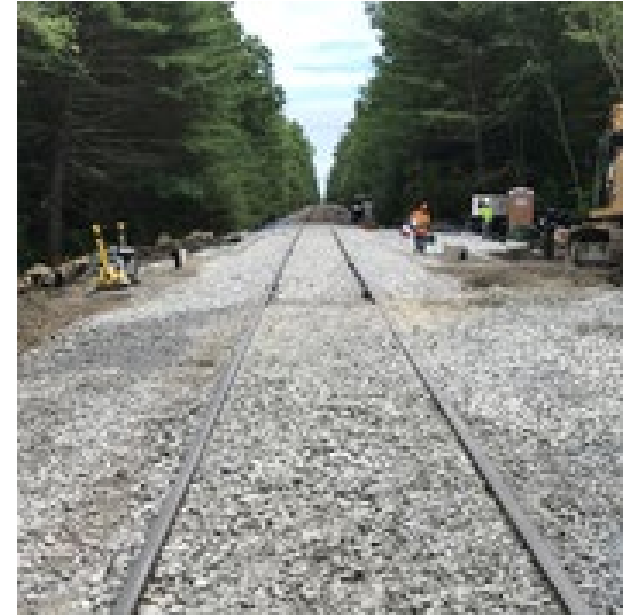


Collins Street, South Abutment  
and Drainage Trough



# Update on Early Action Projects

- Special Track Work
  - Awarded to Progress Rail
  - Special Track Work deliveries started
- Early Action Culverts
  - Awarded to JF White
  - 28 of 46 culverts reconstructed
- Early Action 4 Bridge
  - Awarded to JF White
  - Site preparation complete for Cotley River Bridge



Restored Track



Cofferdam Installation





So	Contract	Description	Current Stage	Advertise	Schedule	Cost
	#1 – Special Track Procurement	57 Turnouts	Construction	Sep-18	Oct 2019 - Feb 2021	\$ 9.8 Million
	#2 – Early Action-Culverts/Tarkiln	45 Culverts / 1 xing	Construction	Nov-18	March 2019 - Dec 2019	\$ 18.3 Million
	#3 – Early Action-4 Bridges	4 Railroad Bridges/1 Culvert	Construction	Dec-18	May 2019 - Oct 2020	\$ 26.1 Million
	#5 – Route 24 Bridge	Route 24 Highway Bridge	Final Design	Jan-20	Sept 2020 - Feb 2023	\$ 14.4 Million
	#6 New Bedford to Middleborough	Middleborough Secondary & New Bedford Main Line including Stations & Layover Facility.	Final Design	Apr-20	Aug 2020 - Nov 2023	\$423.8 Million
		Systems (Signal & Communications) – MS/NBML & FS including equipment procurement and installation				
	#7 Fall River Secondary	Fall River Secondary including Stations, Bridges, Golf Cart Ped. Bridge & Layover Facility	Final Design	Feb-20	May 2020 - Sept 2022	\$ 176.0 Million
	#10 – New Bedford Pedestrian Bridge	Pedestrian Bridge	Final Design	Nov-20	Apr 2021 - June 2023	\$ 8.6 Million
	#12 – Off Site Traffic Improvement	Traffic	Final Design	Jan-21	Apr 2021 – June 2023	\$ 7.8 Million
	Procurement	16 Bi-Level Coaches; 2 Locos		Contract Option		\$ 75.2 Million
	Land Acquisition	Takings, easements, agreements			Oct 2018 - Apr 2020	\$ 24.4 Million
	SGR Tie Replacement	MS - Tie Replacement			Complete	\$ 3.4 Million
	Noise Mitigation	Noise Insulation/Windows				\$11.5 Million
	Soft Costs	Prof services, Force Accnt, Agency			Ongoing	\$192.2 Million
	Unallocated Contingency					\$5.2 Million
		TOTAL PHASE PROGRAM				\$996.7 Million
9						

# Design Update

Milestone	C7 Fall River Secondary	C6/C9 MS/NBML & Systems
100% Design Submittal	09/20/2019	12/13/2019
Plans, Specs & Estimate (PS&E)	12/20/2019	02/28/2020
Contract Advertisement	02/02/2020	04/15/2020

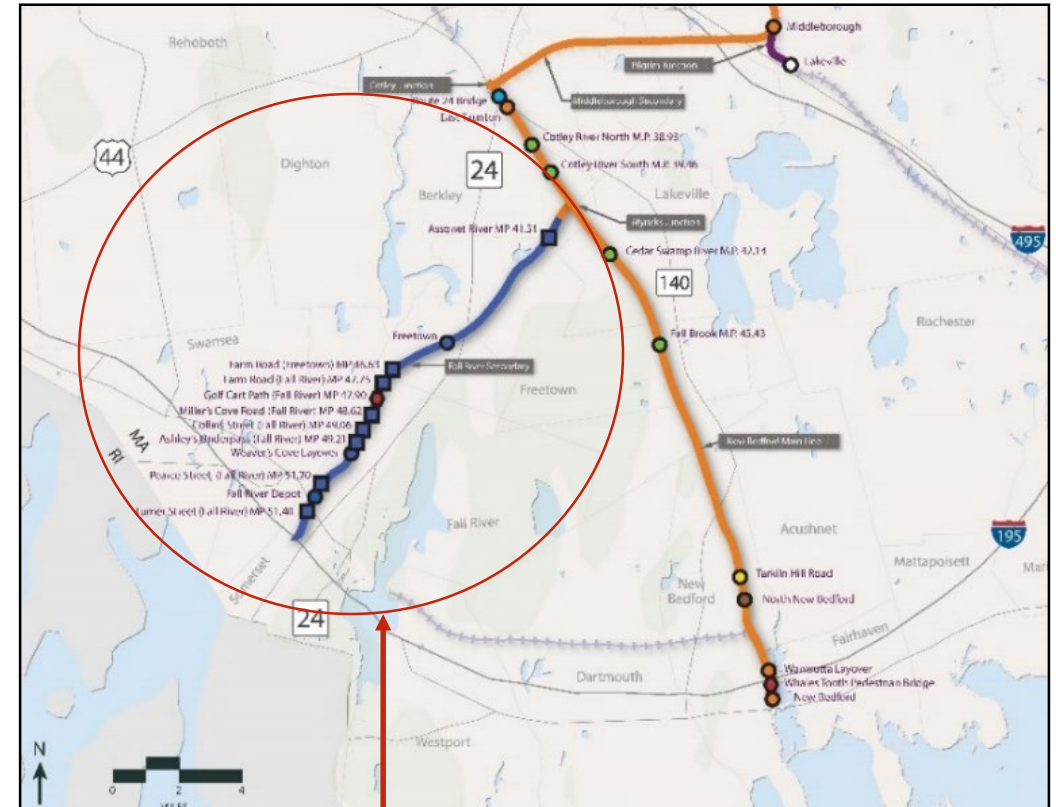


# Fall River Secondary Contract

- 2 stations
- 8 overhead Bridges
- Weaver's Cove Layover Facility
- 10 Grade Crossings
- 4 Interlockings
- 12.1 ROW of miles
- 12.9 track miles



Freetown Station



Fall River Secondary



# Look Ahead: Next Steps

---

- New Bedford Main Line and Systems Contract (C6/C9): 100% design submission
- Fall River Secondary Line Contract (C7): Plans, Specifications, and Estimate submission

