



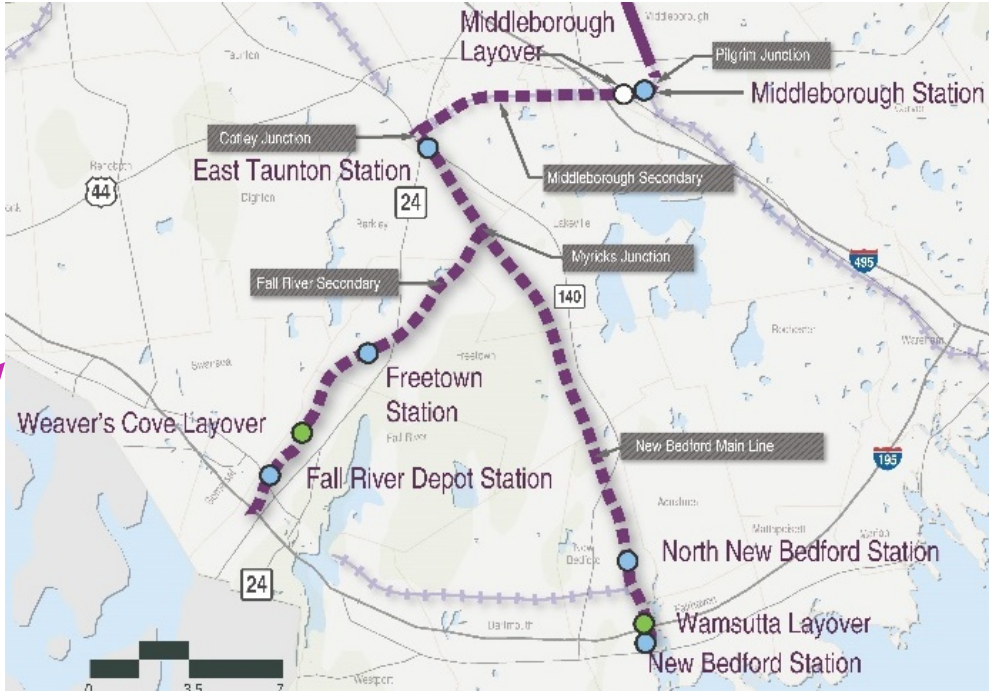
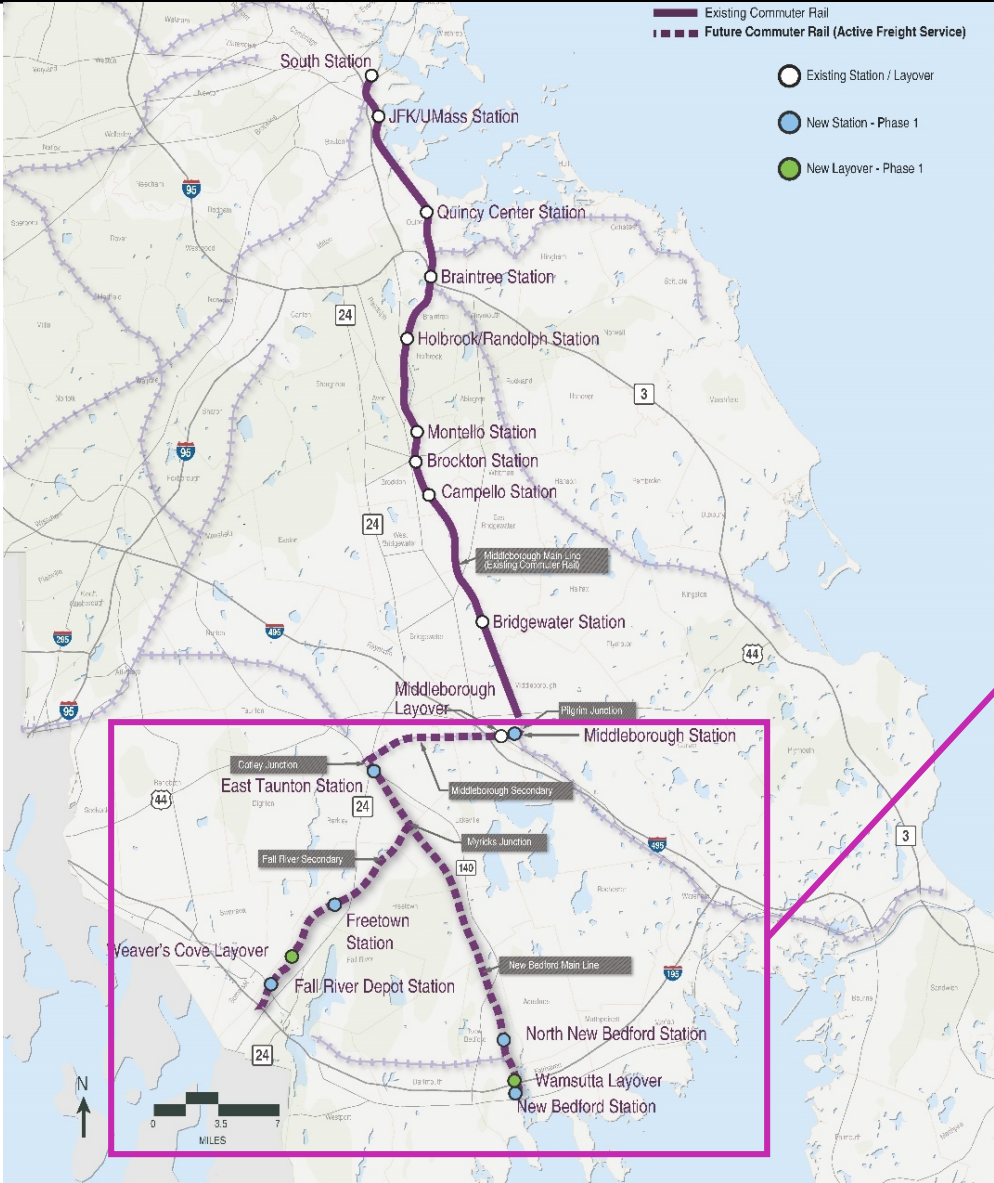
**Massachusetts Bay  
Transportation Authority**

## South Coast Rail Program Update

---

Joint Meeting of the MassDOT Board & Fiscal and Management Control Board  
October 28, 2019  
Jennifer Tabakin

# Phase 1



# Program Management Update

## Status of Work:

- Land acquisition for South Coast Rail - ongoing
- Construction packaging, accepted by MBTA
- Design of Fall River Secondary, 100% design submitted
- Design of Middleborough Secondary & New Bedford Main Line and Systems, at 90% design
- Final review of program cost estimate, risk analysis, and schedule validation, ongoing
- Early Action 4 Bridges - site preparation and support of excavation
- 100% Design of Middleborough Secondary & New Bedford Main Line and Systems
- Special track work deliveries started
- Early Action Culverts: 28 of the 46 culverts reconstructed with substantial completion expected by December, 2019
- Early Action 4 Bridges: construction of the Cotley River Bridges ongoing



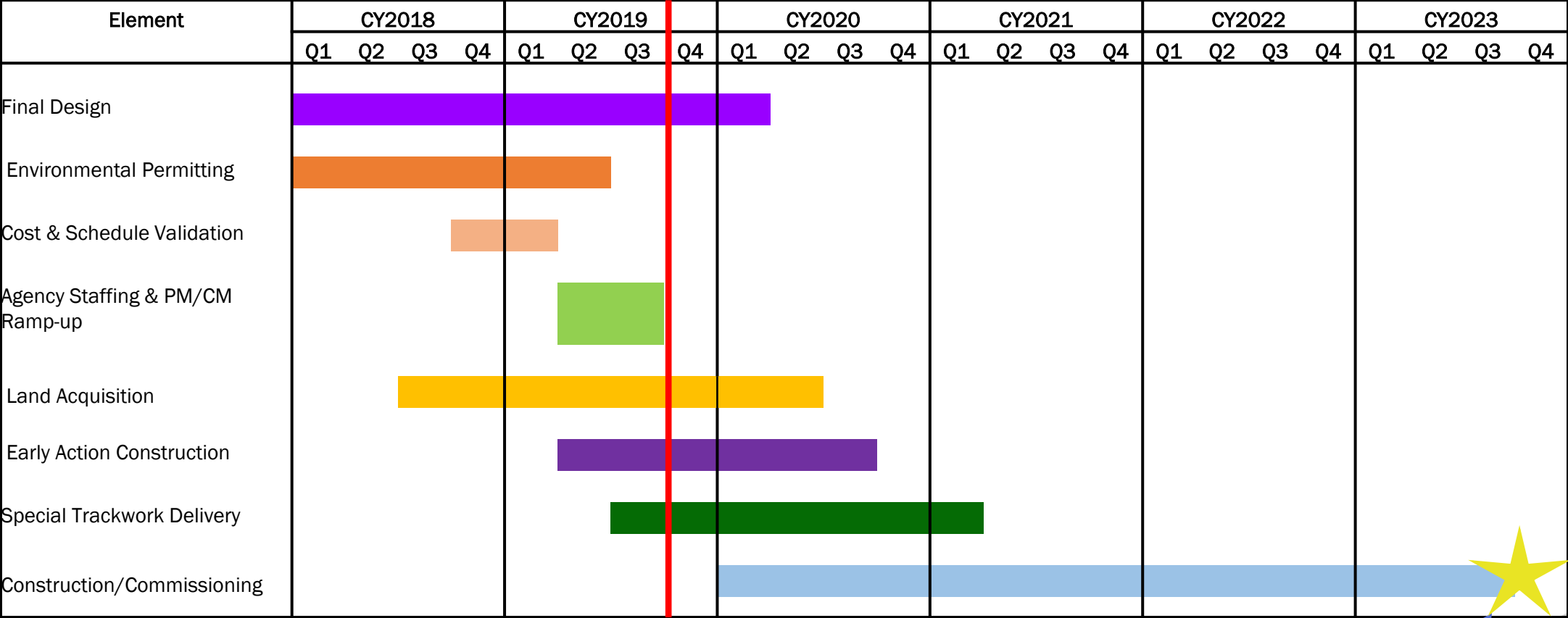
*Restored Track*



*Precast Culvert Delivery*



# Phase 1 Schedule



Start of Revenue Service - 2023

Contract	Description	Current Stage	Advertise	Schedule	Cost
Special Track Procurement	57 Turnouts	Construction	18-Sep	Oct 2019 - Feb 2021	\$ 9.8 Million
Early Action-Culverts/Tarkiln	45 Culverts / 1 crossing	Construction	18-Nov	March 2019 - Dec 2019	\$ 18.3 Million
Early Action-4 Bridges	4 Railroad Bridges/1 Culvert	Construction	18-Dec	May 2019 - Oct 2020	\$ 26.1 Million
Route 24 Bridge	Route 24 Highway Bridge	Final Design	20-Jan	Sept 2020 - Feb 2023	\$ 14.4 Million
New Bedford to Middleborough and Phase One Signal and Communications	Civil work stations, layovers, bridges, layover, track.	Final Design	20-Apr	Aug 2020 - Nov 2023	\$423.8 Million
	Signal, communication and systems for all of phase one.				
Fall River Secondary	Fall River secondary including Stations, Bridges, Bridge & Layover Facility	Final Design	20-Feb	May 2020 - Sept 2022	\$ 176.0 Million
New Bedford Pedestrian Bridge	Pedestrian Bridge	Final Design	20-Nov	Apr 2021 - June 2023	\$ 8.6 Million
Off Site Traffic Improvement	Traffic Mitigation	Final Design	21-Jan	Apr 2021 – June 2023	\$ 7.8 Million
Coaches for South Coast Rail	16 Bi-Level Coaches; 2 Locos	Procurement		October 2019	\$ 75.2 Million
Land Acquisition	Takings, easements, agreements			Oct 2018 - Apr 2020	\$ 24.4 Million
SGR Tie Replacement	Middleboro Secondary - Tie Replacement			Complete	\$ 3.4 Million
Noise Mitigation	Noise Insulation/Windows				\$11.5 Million
Soft Costs	Prof services, Force Account, Agency			Ongoing	\$192.2 Million
Contingency / Other					\$5.2 Million
	TOTAL PHASE PROGRAM				\$996.7 Million

# Phase 1 Infrastructure

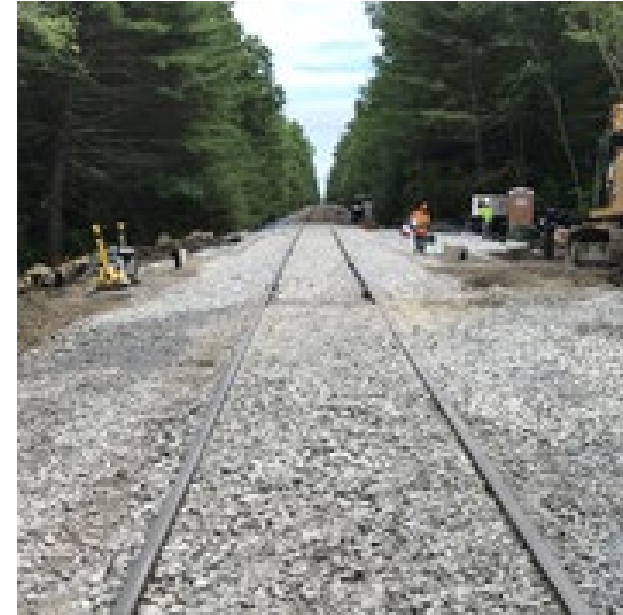
	Fall River Secondary	MS/NBML & Systems	Total
ROW Miles	12.1	24.1	36.2
Track Miles	12.9	35.1	48.0
Stations	2	4	6
Layovers	1	1	2
Grade Crx	10	18	28
Bridges	8	6	14
Interlockings	4	14	18





# Update on Early Action Projects

- Special Track Work
  - Awarded to Progress Rail
  - Special Track Work deliveries started
- Early Action Culverts
  - Awarded to JF White
  - 28 of 46 culverts reconstructed
- Early Action 4 Bridge
  - Awarded to JF White
  - Site preparation complete for Cotley River Bridge



*Restored Track*

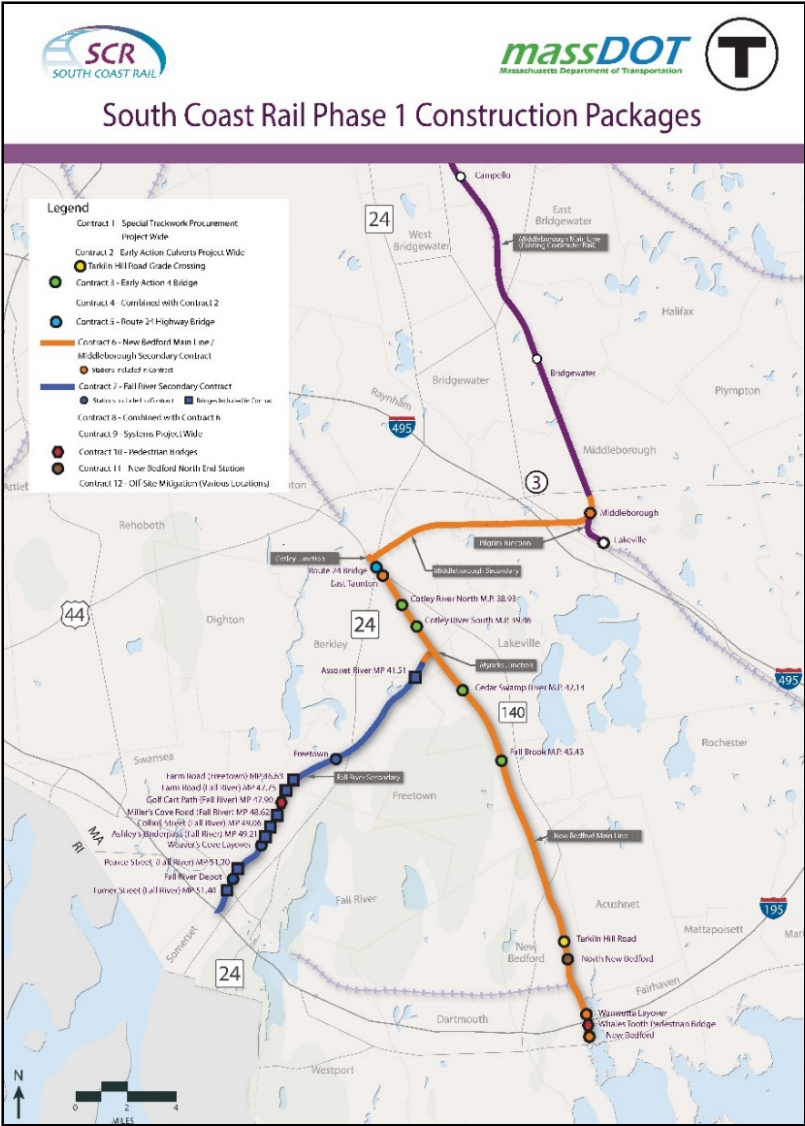


*Cofferdam Installation*



# Design Status

Contract Package	Level of Design
Fall River Secondary	100%
North New Bedford Station	90%
Middleborough Secondary/New Bedford Main Line/Systems	90%
Route 24	75%
New Bedford Ped Bridge	25%
Off-Site Traffic Mitigation	25%





# Six Stations



Middleborough  
Station, Pilgrim  
Junction



East Taunton  
Station,  
Route 140

	Parking Spaces
Middleborough	500
East Taunton	363
North New Bedford	355
New Bedford*	352
Freetown	113
Fall River Depot*	220

\* Terminal Station

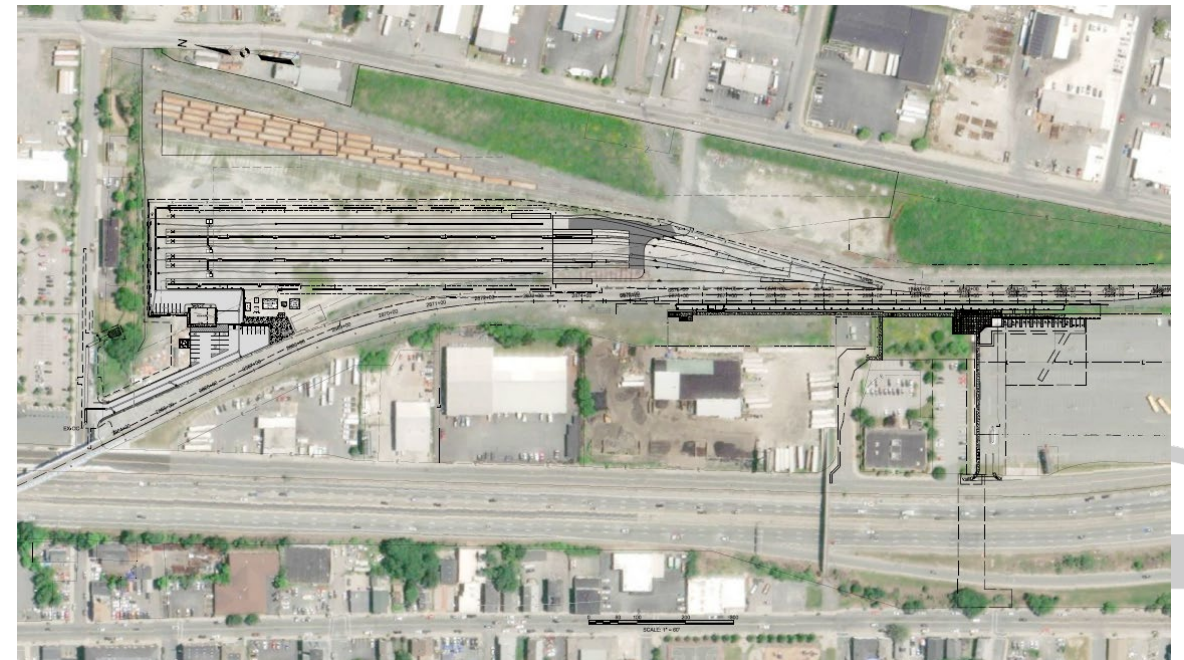


# Layovers: Weaver's Cove & Wamsutta

- 6 tracks
- Crew quarters
- Employee Parking



*Weaver's Cove Layover Facility*



*Wamsutta Layover Facility*



# Systems

- 28 Grade Crossings:
  - Middleborough Secondary/New Bedford Main Line (18)
  - Fall River Secondary Line (10)
- 18 Interlockings
- Positive Train Control



*Existing Grade Crossing*



*Cantilever*



# Bridges

- 4 undergrade bridges on New Bedford Main Line
- New Bedford pedestrian bridge
- 8 undergrade bridges on Fall River Secondary Line
- Rt. 24 Highway overhead bridge

*Collins Street,  
East Elevation*



*Collins Street, South  
Abutment and  
Drainage Trough*

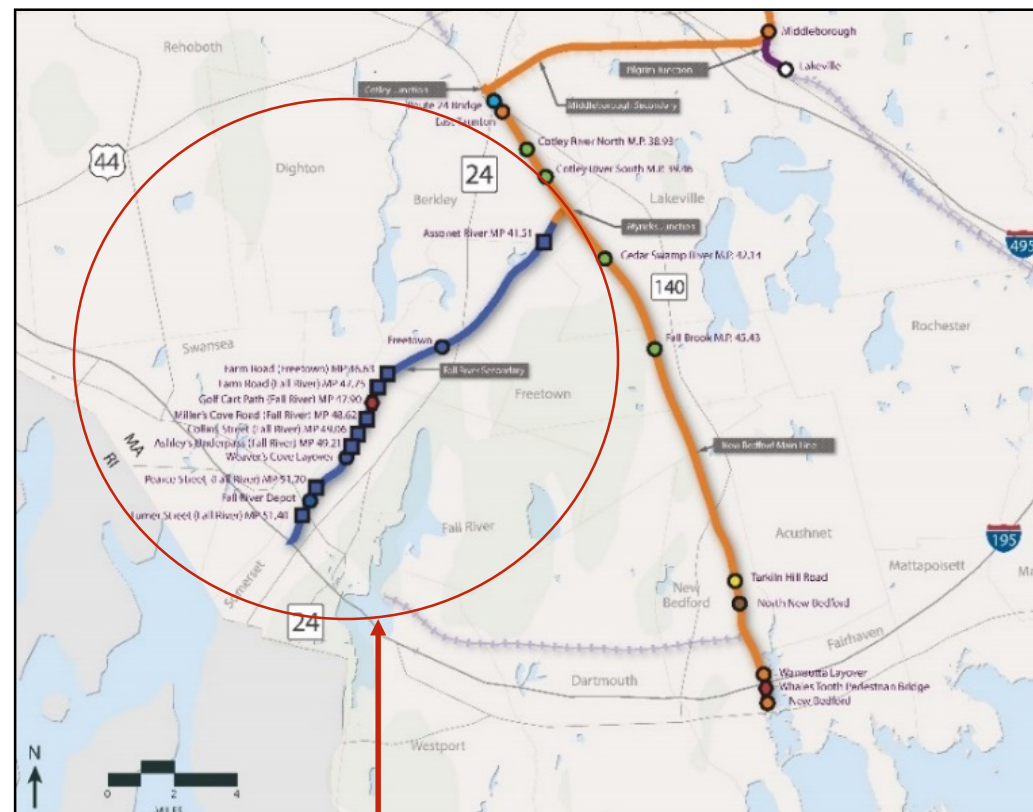


*Pedestrian Bridge over Route 18*



# Fall River Secondary Contract

- To be advertised in February 2020
- 2 stations
- 8 Overhead Bridges
- Weaver's Cove Layover Facility
- 10 Grade Crossings
- 4 Interlockings
- 12.1 ROW of miles
- 12.9 track miles



Fall River Secondary

Freetown Station



# Look Ahead: Next Steps

- Fall River Secondary Line Contract: Plans, Specifications, and Estimate submission
- New Bedford Main Line and Systems Contract: 100% design submission



*New Bedford Station*

