

Stonybrook Stabilization & Treatment Centers

Ludlow & Springfield, MA



Sheriff Nicholas Cocchi

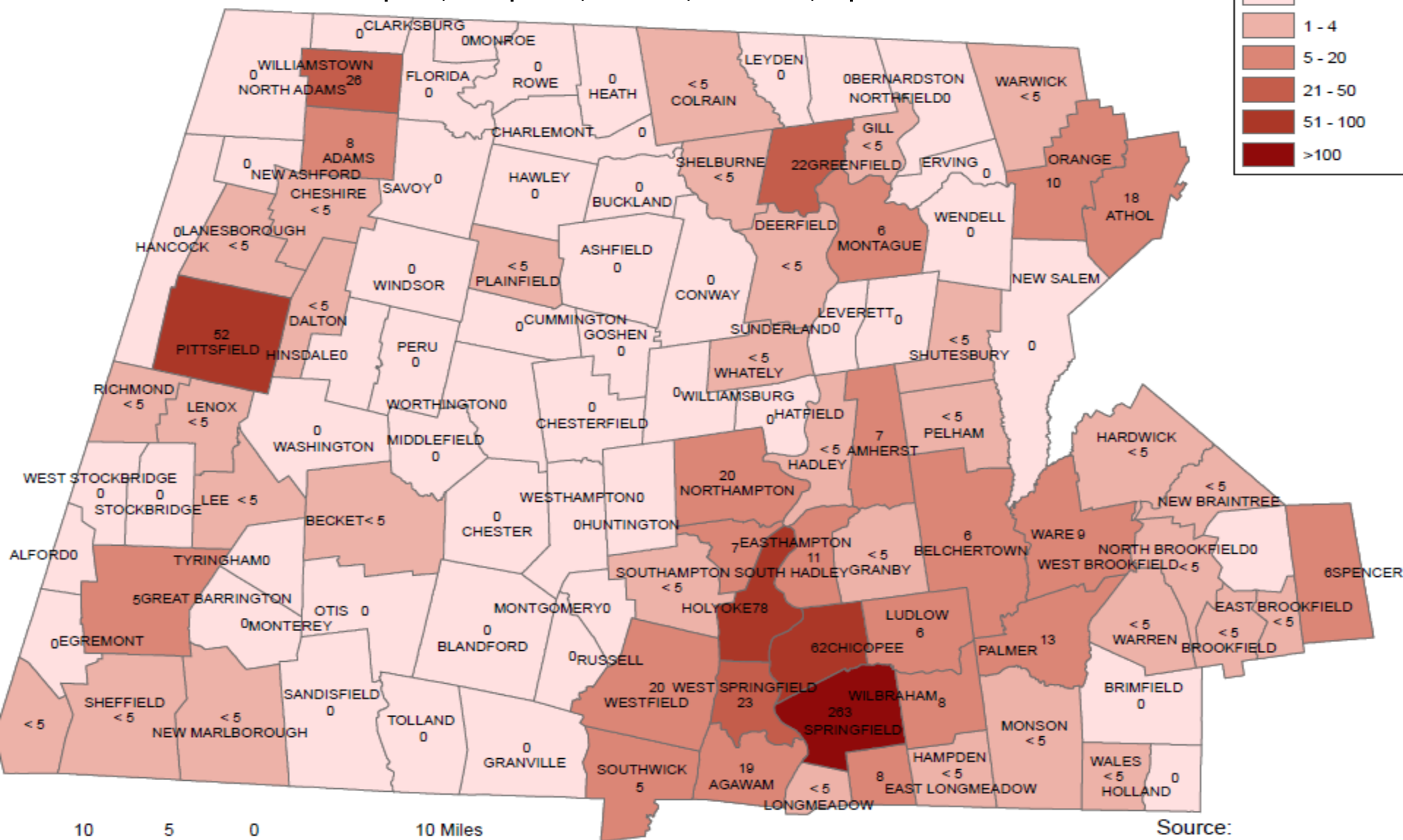
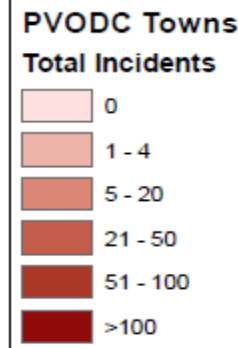
April 25, 2019



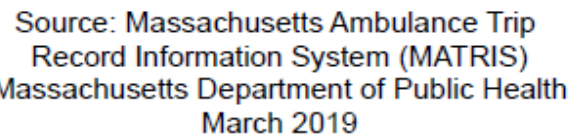
Opioid Overdose Incidents by Town

July-Sept. 2018

Hampden, Hampshire, Franklin, Berkshire, & part of Worcester Counties



Hampden, Hampshire, Franklin, Berkshire, & part of Worcester Counties



Why Western Mass?

- Prevent excessive detoxing time in court lock-up
- Immediate access to medical care & medically managed detox
- Eliminate 2.5 hour transport to Eastern MA
- Close to home & family while fighting this disease
- Local recovery network
- Local support services partners
- Regional safety intervention
- Regional equity

HAMPDEN COUNTY SHERIFF'S DEPARTMENT
AND CORRECTIONAL CENTER

SHERIFF Nicholas Cocchi

By the Numbers

Total Program Beds: 117

Transfers from MASAC	201
Direct Commitments	424
	Total: 625

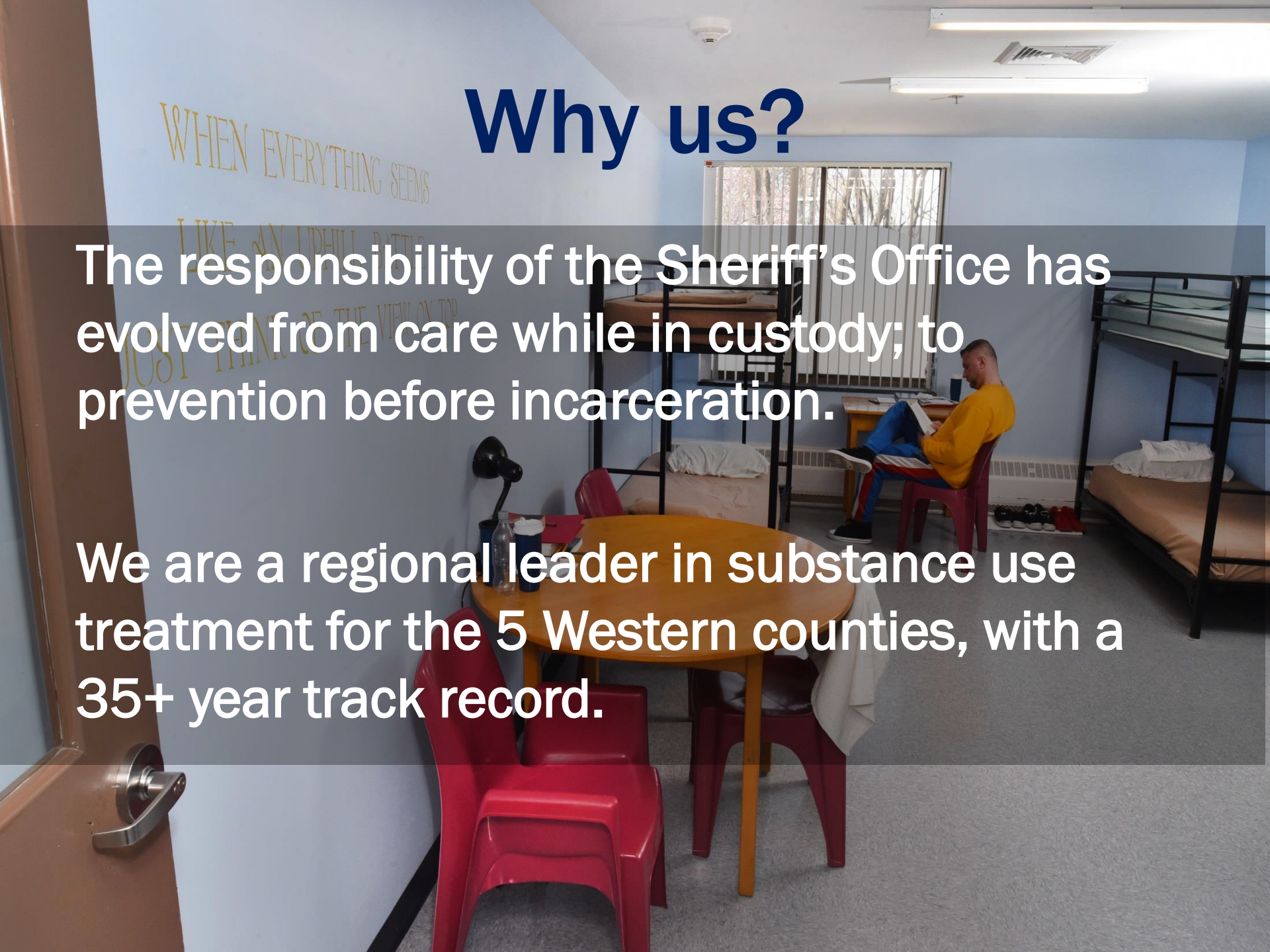
Average civil commitment stay at SSTC: 49 days

Average length of stay at SSTC Ludlow
prior to step down to SSTC Springfield: 15 days

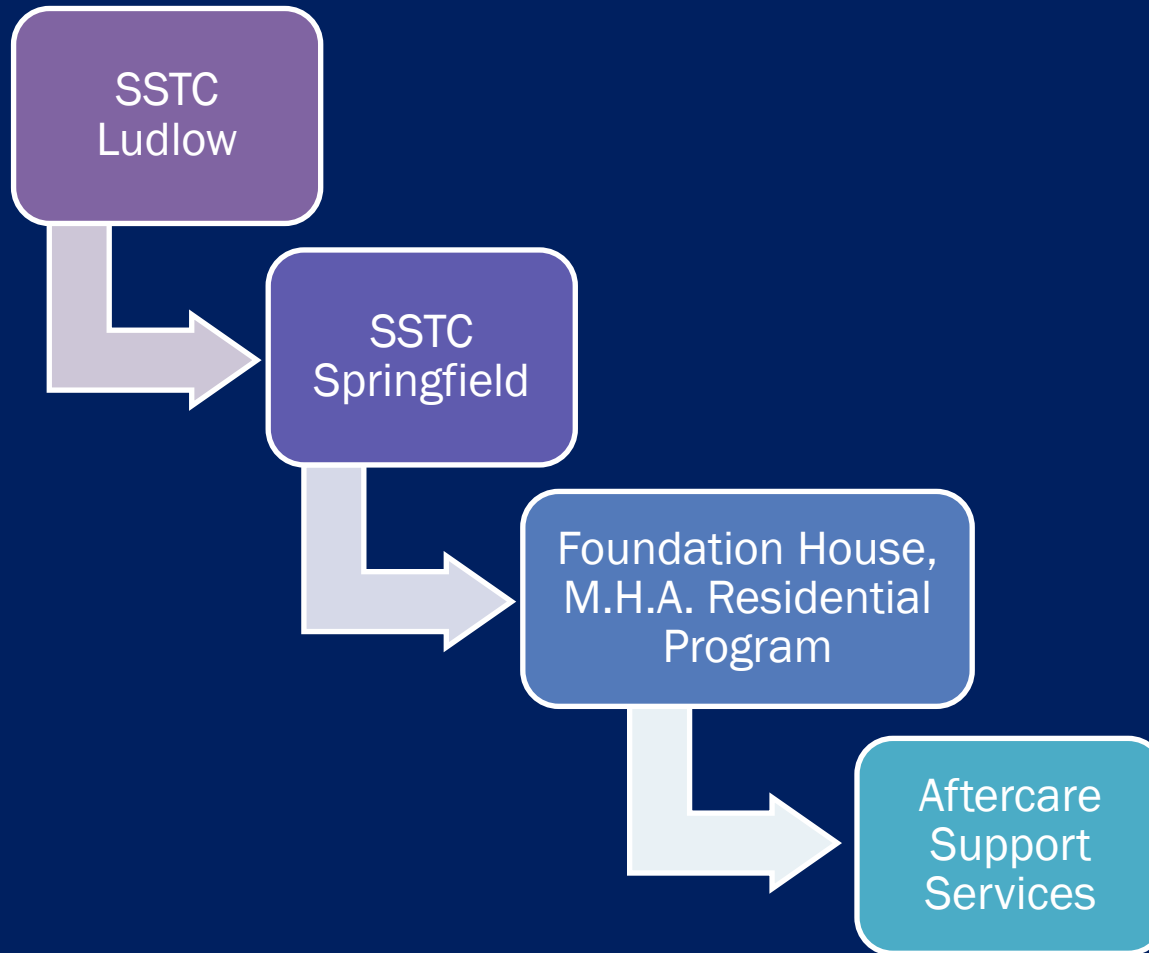
Why us?

The responsibility of the Sheriff's Office has evolved from care while in custody; to prevention before incarceration.

We are a regional leader in substance use treatment for the 5 Western counties, with a 35+ year track record.



Stonybrook Stabilization & Treatment Centers Step Down Model



Statewide average
length of stay for men*
before SSTC: **21 days**

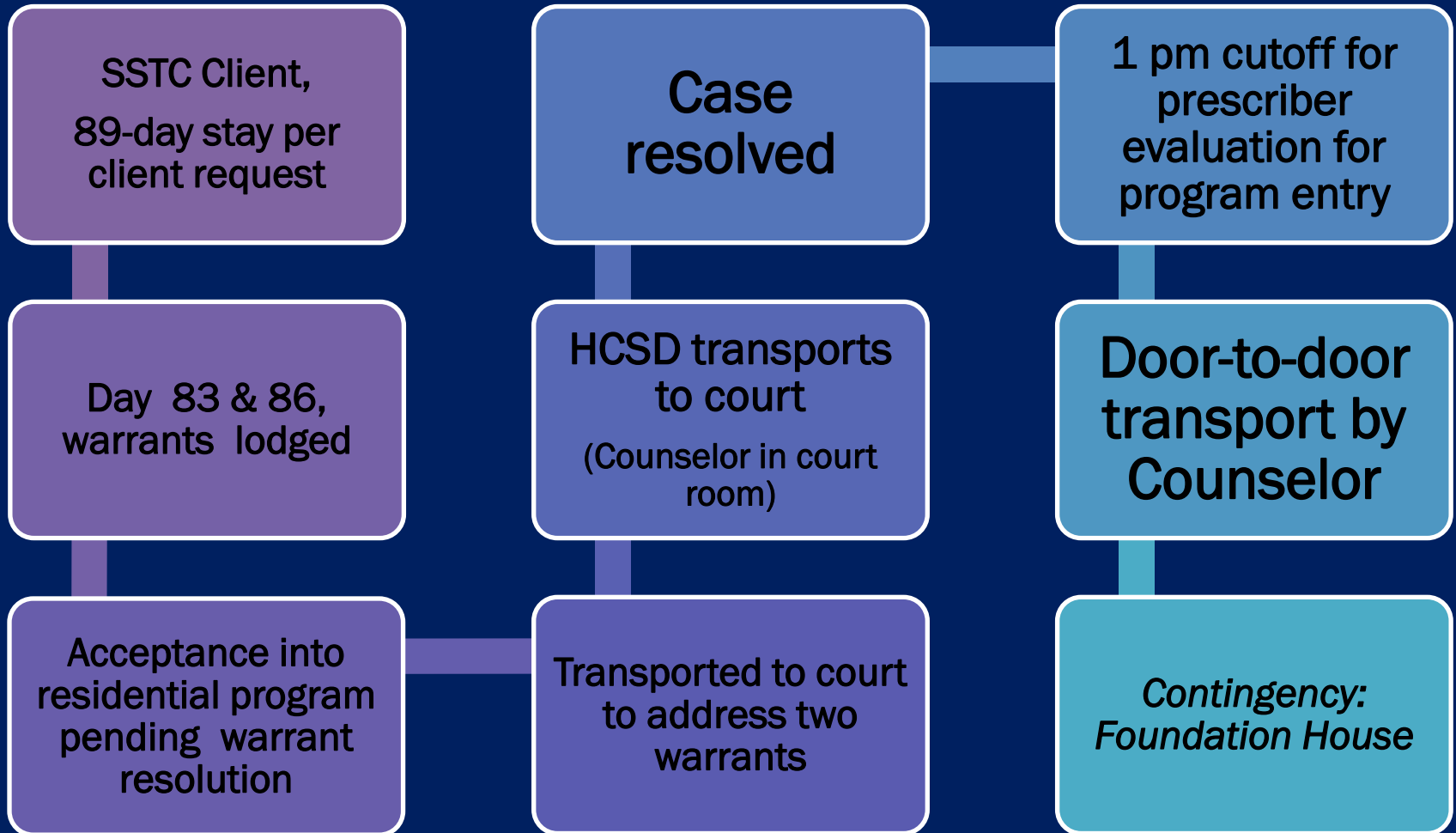
- SSTC average length of stay:
49 days

For women,
average length of
stay (WRAP):
44 days

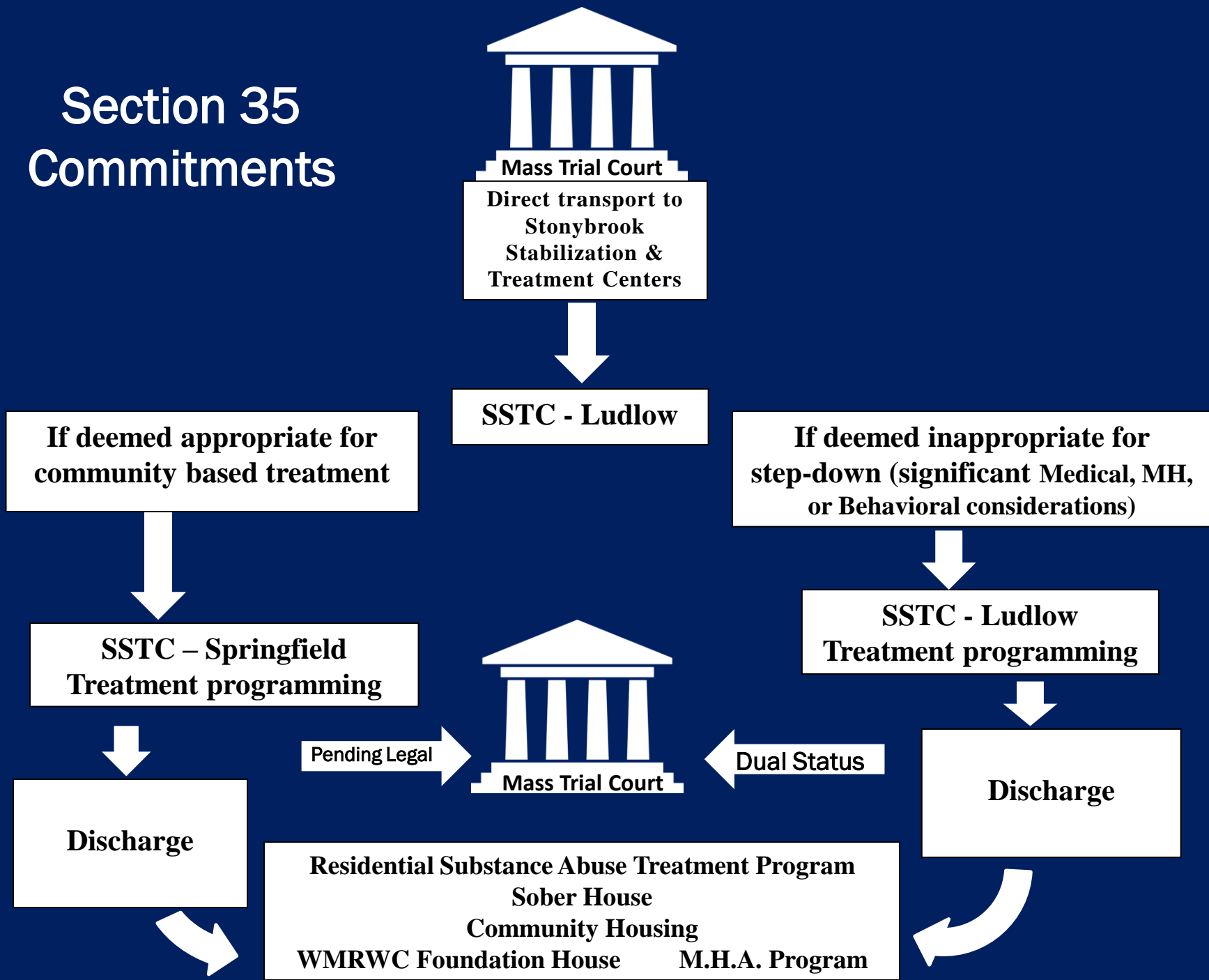
Every Link in the Service Delivery Chain Counts



“David”



Section 35 Commitments





In-Unit Treatment Team

- 24/7 Nursing Care
- Physician
- Mental Health Clinicians & Counselors
- Medication Clinic to include Medication Assisted Treatment
- Caseworkers/Counselors/Recovery Coaches
- Mental Health Evaluation Stabilization Unit
- Clinical Director/Clinical Managers

17 – Master's Degrees

14 – with License or Certificate

(5 LADC I, 3 CADAC, 3 LMHC, 3 LICSW, 1 LCSW, 1 LSW,
1 LMFT, 4 ACE Program Certificate of Completion)

10 – full time staff bring lived experience of addiction and long-term recovery

Culture of Recovery

- Activities
- Clothing
- Unit Décor
- Staff Training
- Individualized Service Plans
- Employment Assistance
- Family Connections

Stability +
Sufficient Tx +
Discharge Plan

Time	Program
6:30 a.m.	Wake-up
7:10-7:30 a.m.	Breakfast/Med Pass
7:30-8:15 a.m.	Morning Chores
8:15-8:45 a.m.	Morning Reflections
8:45-9:15 a.m.	Individual Counseling
9:15-10:00 a.m.	Substance Use Education
10:00-10:45 a.m.	Individual Counseling
10:45-11:30 a.m.	DBT-Group/Program
11:40-12:00 p.m.	Lunch/Med Pass
12:15-1:00 p.m.	Recreation/Gym
1:00-1:50 p.m.	MAT/Program
2:00-3:00 p.m.	Outside Provider/Program.
3:00-3:45 p.m.	PAWS/Program
3:45-4:40 p.m.	Individual Counseling
4:40-5:00 p.m.	Dinner
5:00-6:00 p.m.	Resilience & Hope
6:00-7:00 p.m.	AA/Program
7:00-8:00 p.m.	Med Pass/Free Time
8:00-9:00 p.m.	Evening Chores
9:00-10:15 p.m.	Free time
10:15 p.m.	Lights Out

How we stabilize & support:

- Introduce recovery
- Support cognitive change
- MAT
- Increase intrinsic motivation
- Connect to support systems

- Evidence-guided
- Trauma-informed
- Family-focused



- 35+ Years Transforming Lives
- Proven model for long-term recovery
- 56 Volunteer Mentors
- 300+ Partnering Agencies
- Agency In-reach
- AA/NA
- Mental Health
- Employment
- Vocational Training
- Residential Programming/Housing
- Family Support
- Community Escorts
- One-stop Aftercare Support Services

SSTC Springfield

at the Western Massachusetts
Recovery and Wellness Center

