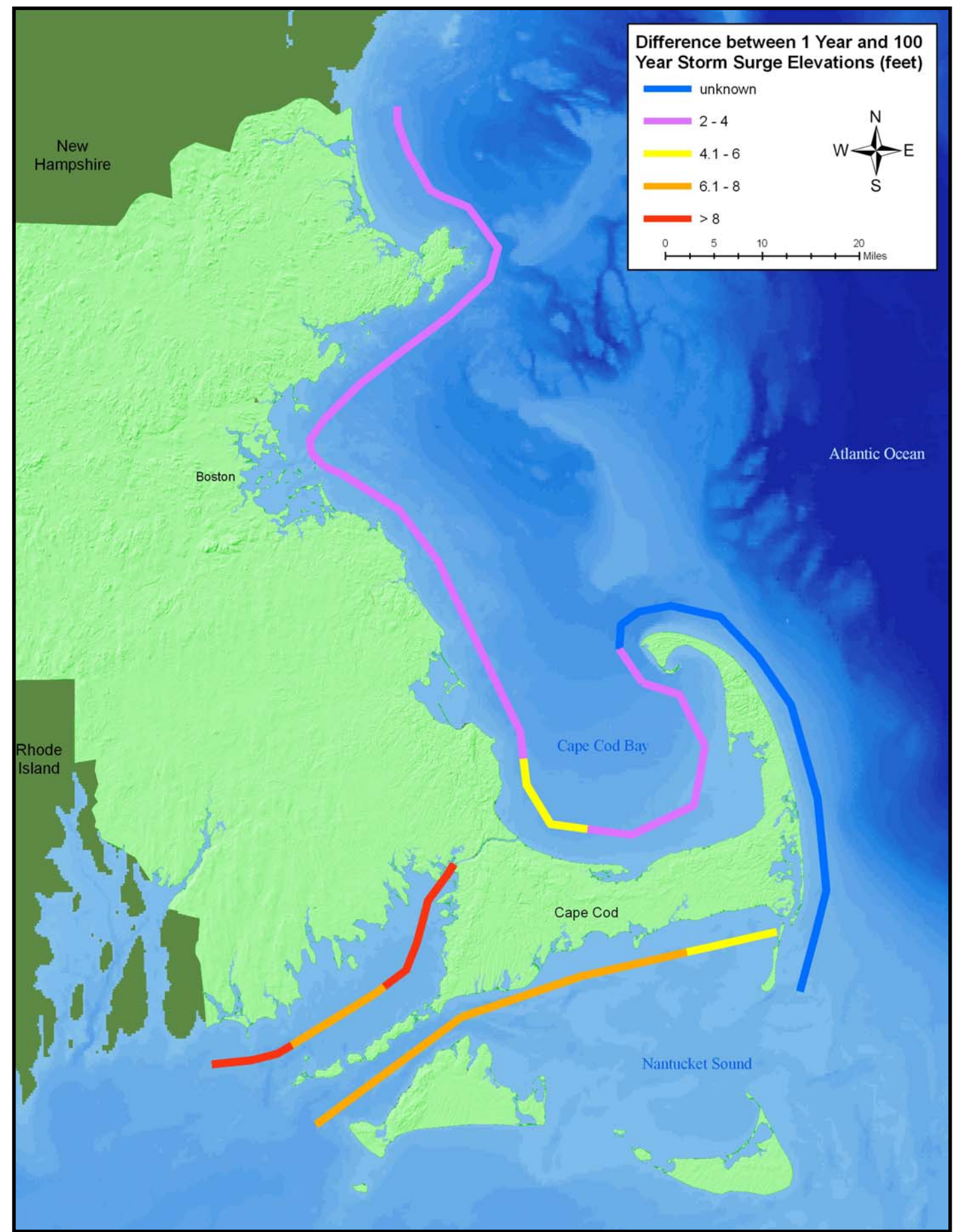


100-year coastal storm surge elevations along the Massachusetts shoreline (derived from Tidal Flood Profiles, New England Coastline. U.S. Army Corps of Engineers, New England Division, September, 1988).



Difference between 1-year and 100-year coastal storm surge elevations along the Massachusetts shoreline (derived from Tidal Flood Profiles, New England Coastline. U.S. Army Corps of Engineers, New England Division, September, 1988).