

Request for Expressions of Interest: Furnace Brook Parkway Substation

Quincy, MA

Contents

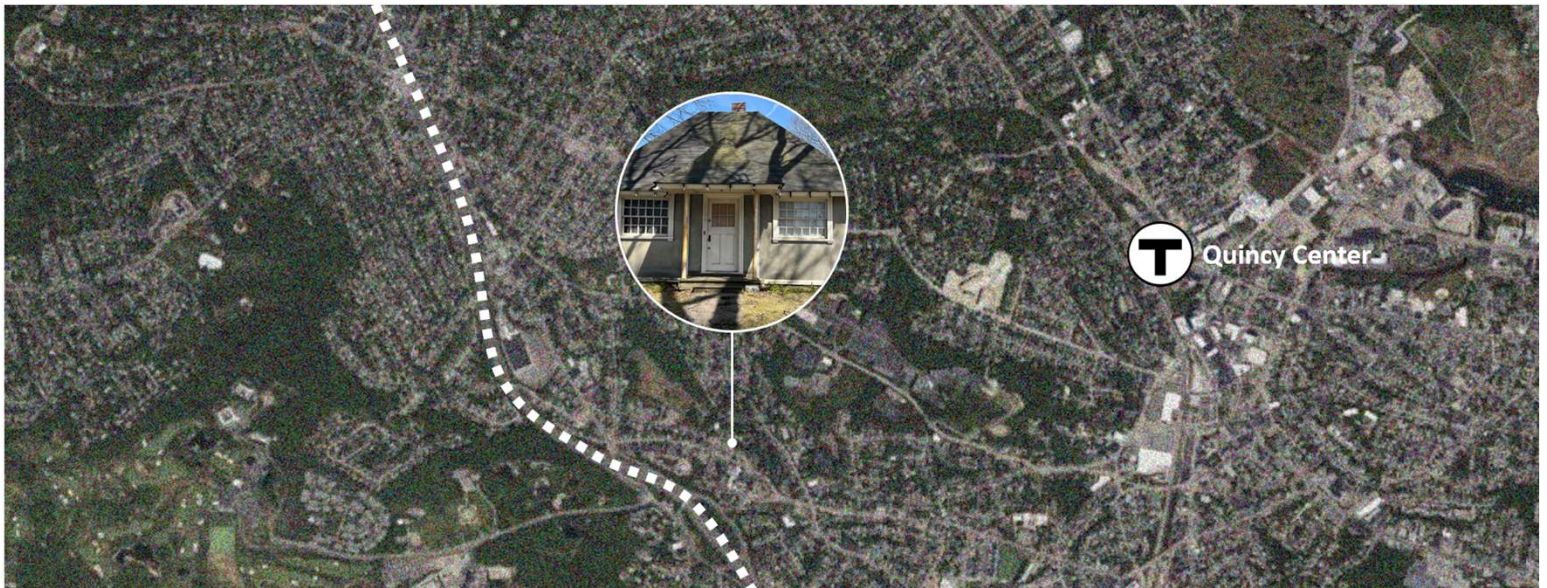
Property Overview	1
Property Tour	2
Historic Curatorship Program Overview	3
Submit Your Vision	4

Property Overview

The Department of Conservation and Recreation (DCR) manages one of the largest Historic Curatorship programs in the country. DCR is currently soliciting expressions of interest for the Furnace Brook Parkway Substation's re-use.

The Substation is located at the corner of Cross St and Furnace Brook Parkway in Quincy. The building is an English Revival-style cottage designed by William D. Austin of the firm of Stickney and Austin architects and constructed in 1907 for the Massachusetts District Commission as a police substation (satellite station). Austin was the primary architect for the first decades of the Metropolitan District Commission, designing such landmarks as the Charles River Speedway Administration Building in Allston-Brighton and the Auburndale Boathouse in Newton.

The cottage is a cozy 400 sq. ft. made up of two rooms, a bathroom, and a finished basement. Lot includes a driveway. Street parking is limited. Suitable uses include a single-family residence and small office.





Building from Front Lawn

Property Tour



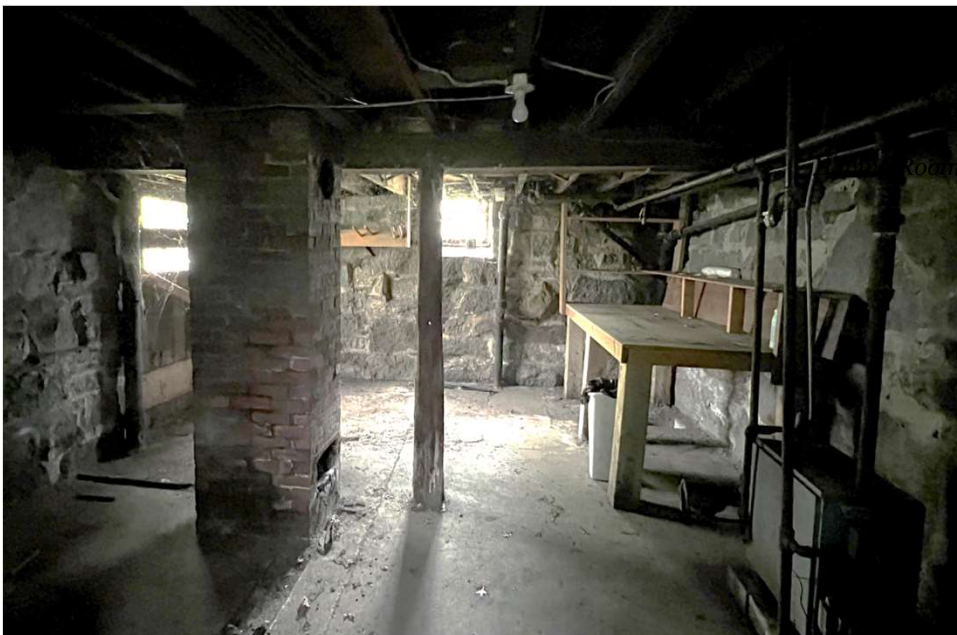
Rear Elevation from Driveway



Main Room



Side Room



Basement



Bathroom

Historic Curatorship Program Overview



Bradley Palmer Mansion Restored

Within the Commonwealth's 450,000 acres of State and Urban Parks are a number of unused, historically significant buildings. The Historic Curatorship Program, established in 1994, is a national model that has helped DCR preserve many of its underutilized but historically significant properties by partnering with outside parties who exchange rehabilitation, management and maintenance services for credit towards a long-term lease. As a result, DCR secures the long-term preservation of historic sites threatened by vandalism and the elements, and Curators live or work in a uniquely pastoral setting.

Curatorship properties are preserved through a wide range of reuses – residential, non-profit, for profit, hospitality and museums. Curators are selected through an open and competitive process and proposed reuses must be compatible with the historic and natural character of the park or forest. Proposals are evaluated according to the experience of the applicant, the quality of the reuse plan, proof of sufficient resources to undertake the project, and level of public benefit beyond providing biannual public access. Average lease terms range from 20 to 30 years.

For more information about the Historic Curatorship program, please visit <https://tinyurl.com/hcp-ma> or contact hcp.requests@mass.gov.



Restored Stained Glass



Bradley Palmer Mansion c.1910



Wachusett Supt' House Interior



Wachusett Supt' House Interior Restored



Wachusett Supt' House Before Restoration



Wachusett Supt' House Restored

Submit Your Substation Reuse Concept

Do you have an idea that could shape a restored Furnace Brook Parkway Substation and bring it back to life? If so, you may be the building's next Curator. DCR invites you to respond to this Request for Expressions of Interest by submitting a brief narrative for your proposed reuse concept, a statement of qualifications, and a brief outline of the feasibility of the proposed project.

Send your submission via email to hcp.requests@mass.gov.

If you have any questions or would like to schedule a tour, email Ethan Parsons, Historic Curatorship Program Manager at ethan.parsons@mass.gov. Please cc fiona.riley@mass.gov.

Submissions must be under 15 mb to be reviewed.

Please note: Responses to the RFEI are public documents and will be utilized by DCR to develop the Request for Proposals (RFP) for the property. This is not a formal Request for Proposals, and a response to this RFEI does not legally bind the respondent to the Historic Curatorship Program or DCR in any way.

Historic
Curatorship
Program



dc
Massachusetts

